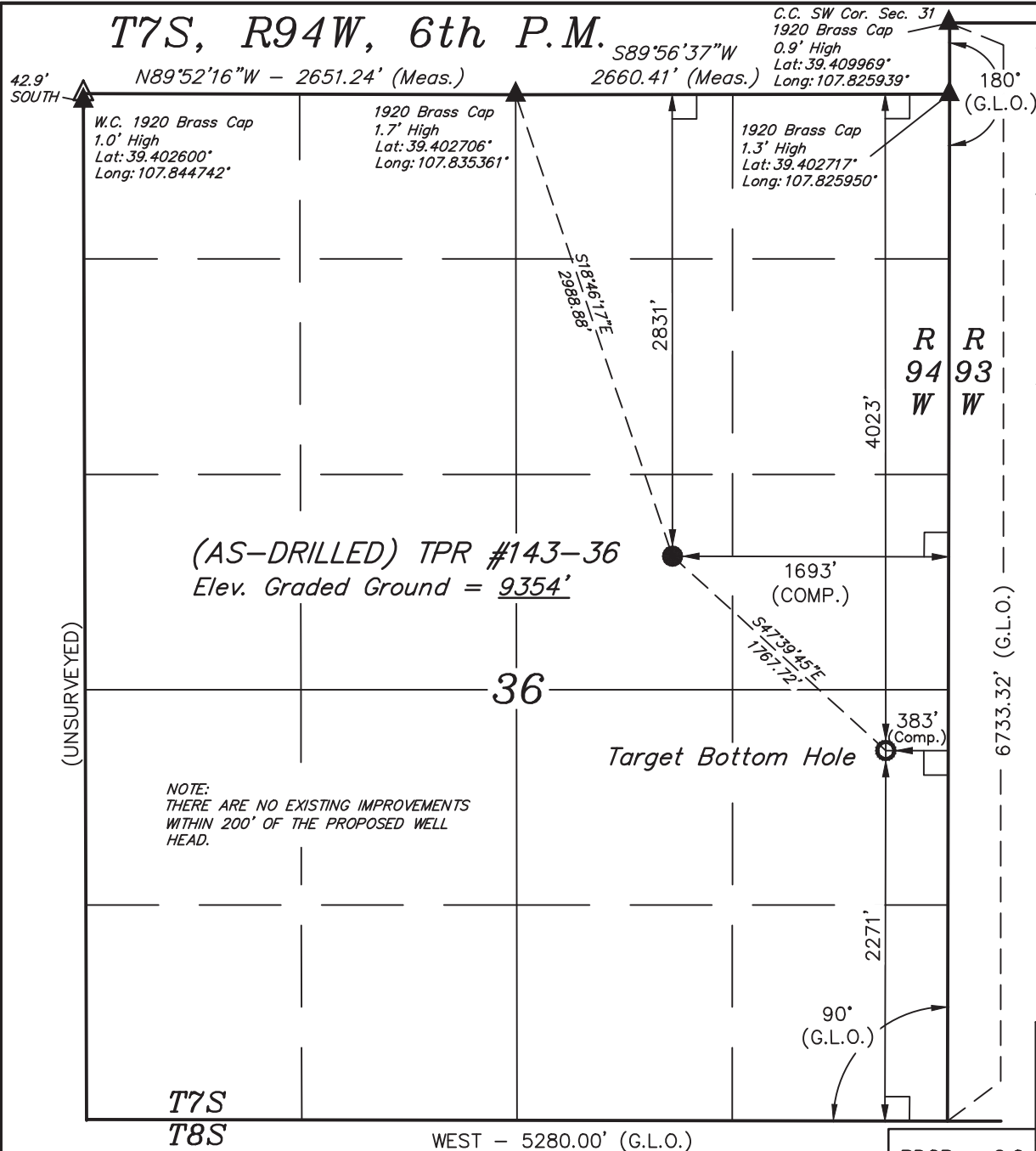


T7S, R94W, 6th P.M.



BLACK DIAMOND MINERALS, LLC

Well location, (AS-DRILLED) TPR #143-36, located as shown in the SW 1/4 NE 1/4 of Section 36, T7S, R94W, 6th P.M., Garfield County, Colorado.

### BASIS OF ELEVATION

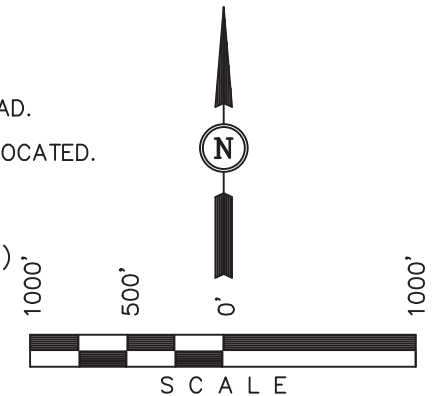
BENCH MARK LOCATED IN THE NE 1/4 OF SECTION 36, T5S, R93W, 6th P.M. TAKEN FROM THE RIFLE QUADRANGLE, COLORADO, GARFIELD COUNTY, 7.5 MINUTE SERIES (TOPOGRAPHICAL MAP) PUBLISHED BY THE UNITED STATES DEPARTMENT OF THE INTERIOR, GEOLOGICAL SURVEY. SAID ELEVATION IS MARKED AS BEING 5546.19 FEET.

### BASIS OF BEARINGS

BASIS OF BEARINGS IS A G.P.S. OBSERVATION.

### LEGEND:

- └─┘ = 90° SYMBOL
- = PROPOSED WELL HEAD.
- ▲ = SECTION CORNERS LOCATED.
- △ = SECTION CORNERS RE-ESTABLISHED. (Not Set on Ground.)



### CERTIFICATE

THIS IS TO CERTIFY THAT THE ABOVE PLAT WAS PREPARED FROM FIELD NOTES OF ACTUAL SURVEYS MADE BY ME OR UNDER MY SUPERVISION AND THAT THE SAME ARE TRUE AND CORRECT TO THE BEST OF MY KNOWLEDGE AND BELIEF.

REGISTERED LAND SURVEYOR  
REGISTRATION NO. 17492  
STATE OF COLORADO

UINTAH ENGINEERING & LAND SURVEYING

85 SOUTH 200 EAST - VERNAL, UTAH 84078

(435) 789-1017

SURFACE USE OF LOCATION IS GRAZING, VEGETATION CONSISTS MAINLY OF PINE TREE & NATIVE GRASSES.

NAD 83 (TARGET BOTTOM HOLE)	NAD 83 (AS-DRILLED SURFACE LOCATION)
LATITUDE = 39°23'30.03" (39.391674)	LATITUDE = 39°23'41.79" (39.394942)
LONGITUDE = 107°49'38.37" (107.827324)	LONGITUDE = 107°49'55.03" (107.831953)
NAD 27 (TARGET BOTTOM HOLE)	NAD 27 (AS-DRILLED SURFACE LOCATION)
LATITUDE = 39°23'30.10" (39.391694)	LATITUDE = 39°23'41.86" (39.394961)
LONGITUDE = 107°49'36.14" (107.826706)	LONGITUDE = 107°49'52.79" (107.831331)

SCALE 1" = 1000'	DATE SURVEYED: 10-31-13	DATE DRAWN: 11-05-13
PARTY B.B. B.B. T.B.	REFERENCES G.L.O. PLAT	
WEATHER COLD	FILE BLACK DIAMOND MINERALS, LLC	