

# **EXTRACTION OIL & GAS**

**WELD COUNTY, COLORADO (NAD 83)**

**NW SW SEC. 5 T2N R68W 6th P.M.**

**FAIRVIEW 11**

**ORIGINAL WELLBORE**

**09 November, 2014**

**Plan: PROPOSAL #2**

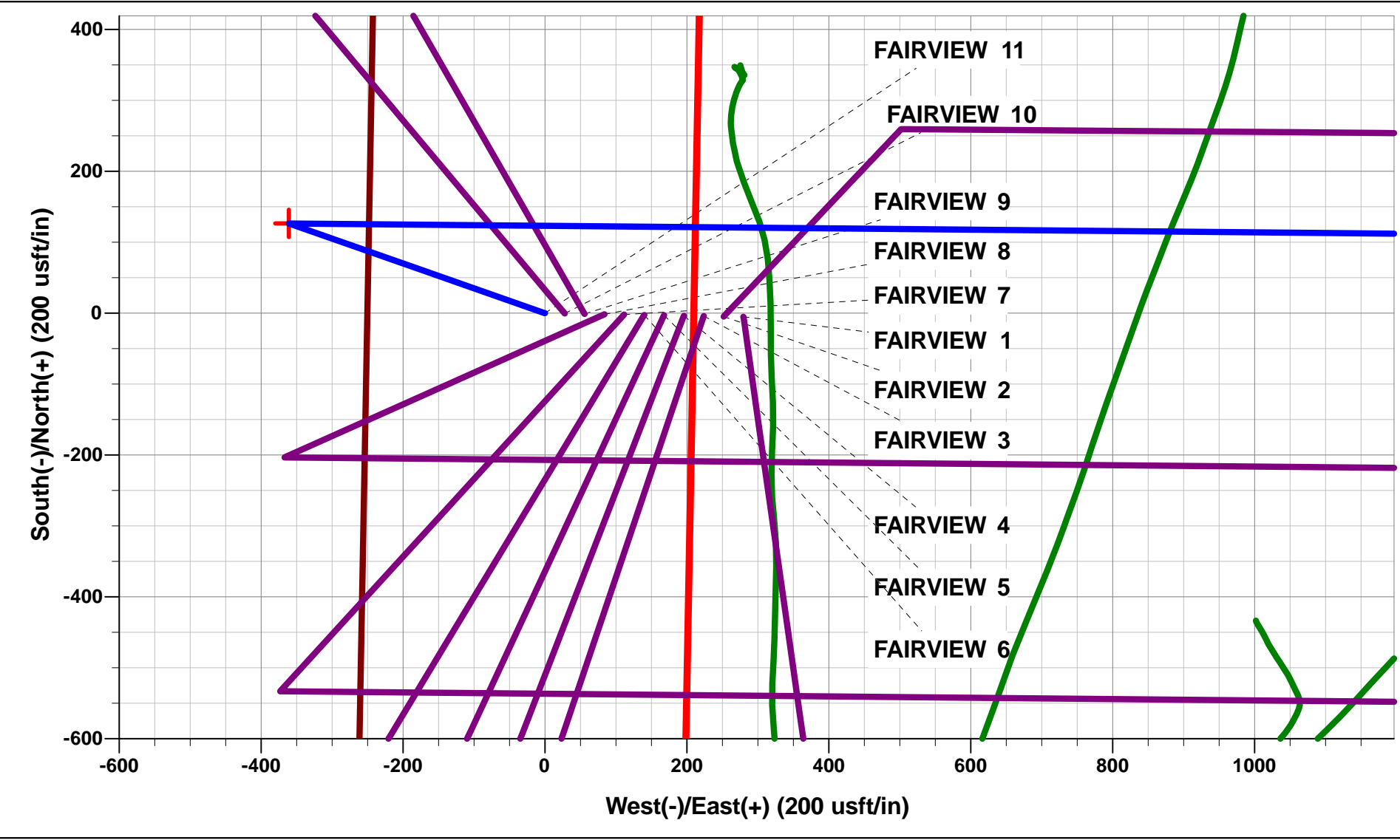




Project: WELD COUNTY, COLORADO (NAD 83)  
Site: NW SW SEC. 5 T2N R68W 6th P.M.  
Well: FAIRVIEW 11  
Wellbore: ORIGINAL WELLBORE  
Design: PROPOSAL #2

ANNOTATIONS										
TVD	MD	Inc	Azi	+N/-S	+E/-W	Vsect	Dep	Annotation		
950.0	950.0	0.00	0.00	0.0	0.0	0.0	0.0	START NUDGE (2°/100ft BUR)		
1199.9	1200.2	5.00	289.33	3.6	-10.3	-10.3	10.9	EOB TO 5° INC		
5317.1	5333.2	5.00	289.33	123.0	-350.5	-349.6	371.5	END OF TANGENT		
5567.0	5583.4	0.00	0.00	126.6	-360.8	-359.8	382.4	EOD TO VERTICAL		
6547.0	6563.4	0.00	0.00	126.6	-360.8	-359.8	382.4	KOP (10°/100ft BUR)		
7120.0	7463.4	89.99	90.53	121.3	212.1	213.0	955.3	7" ICP - FAIRVIEW 11 (P2)		
7120.0	14532.4	90.00	90.53	56.1	7280.8	7281.0	8024.3	BHL - FAIRVIEW 11 (P2)		

WELLBORE TARGET DETAILS (LAT/LONG)					
Name	TVD	+N/-S	+E/-W	Latitude	Longitude
KOP - FAIRVIEW 11 (P2)	6547.0	126.6	-360.8	40.166117	-105.036959
7" ICP - FAIRVIEW 11 (P2)	7120.0	121.3	212.1	40.166103	-105.034909
BHL - FAIRVIEW 11 (P2)	7120.0	56.1	7280.8	40.165921	-105.009617

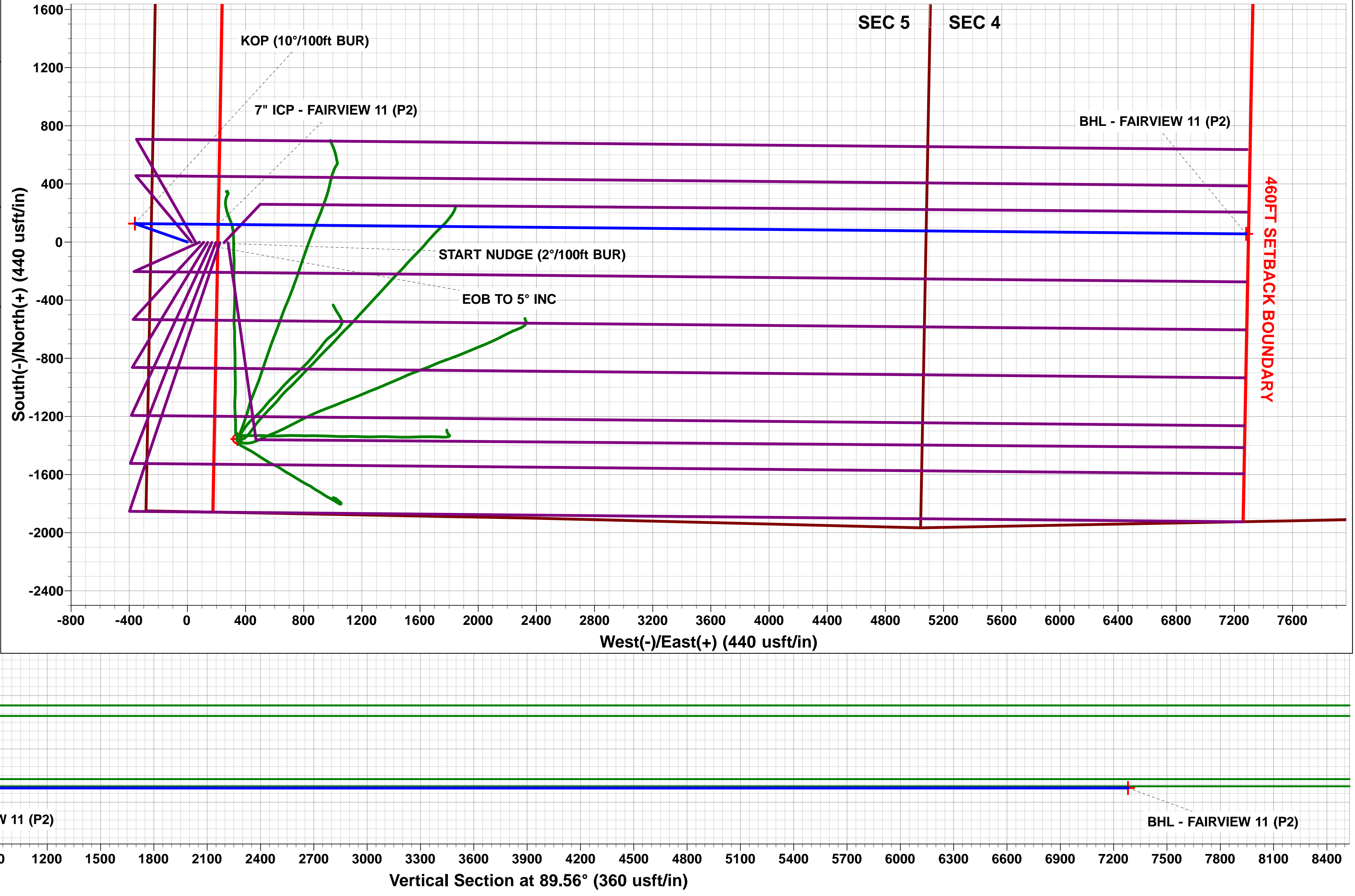
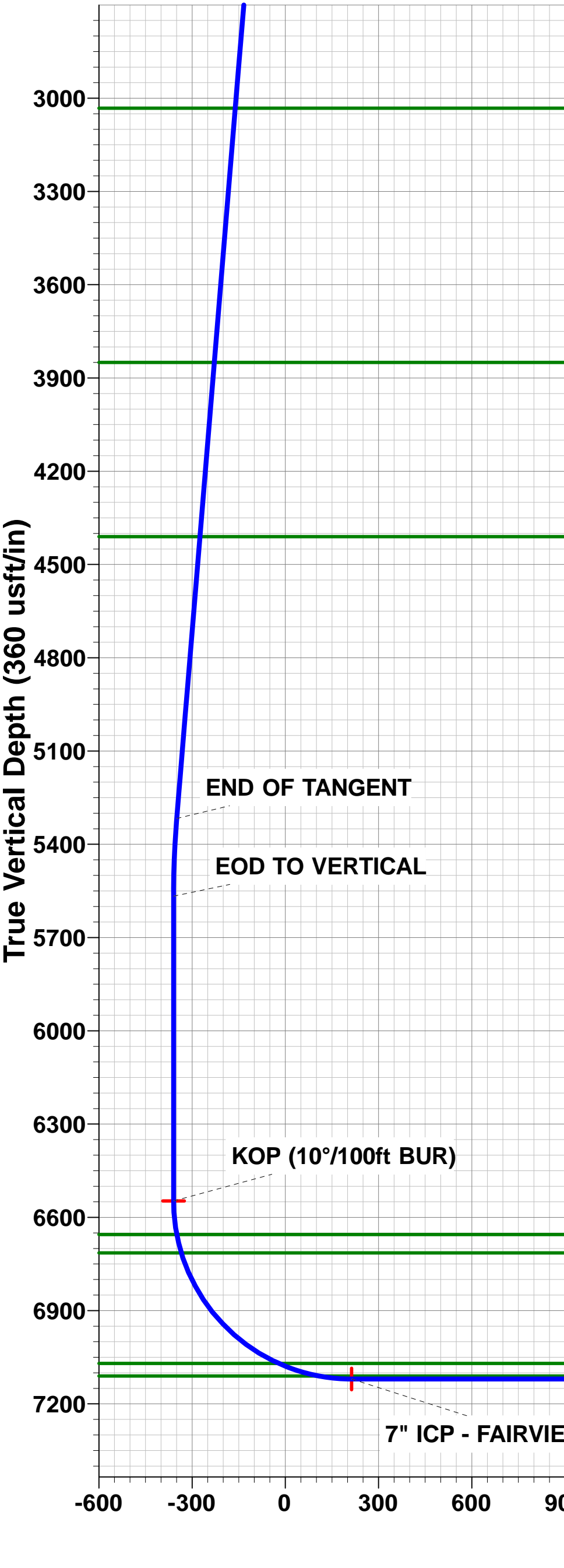
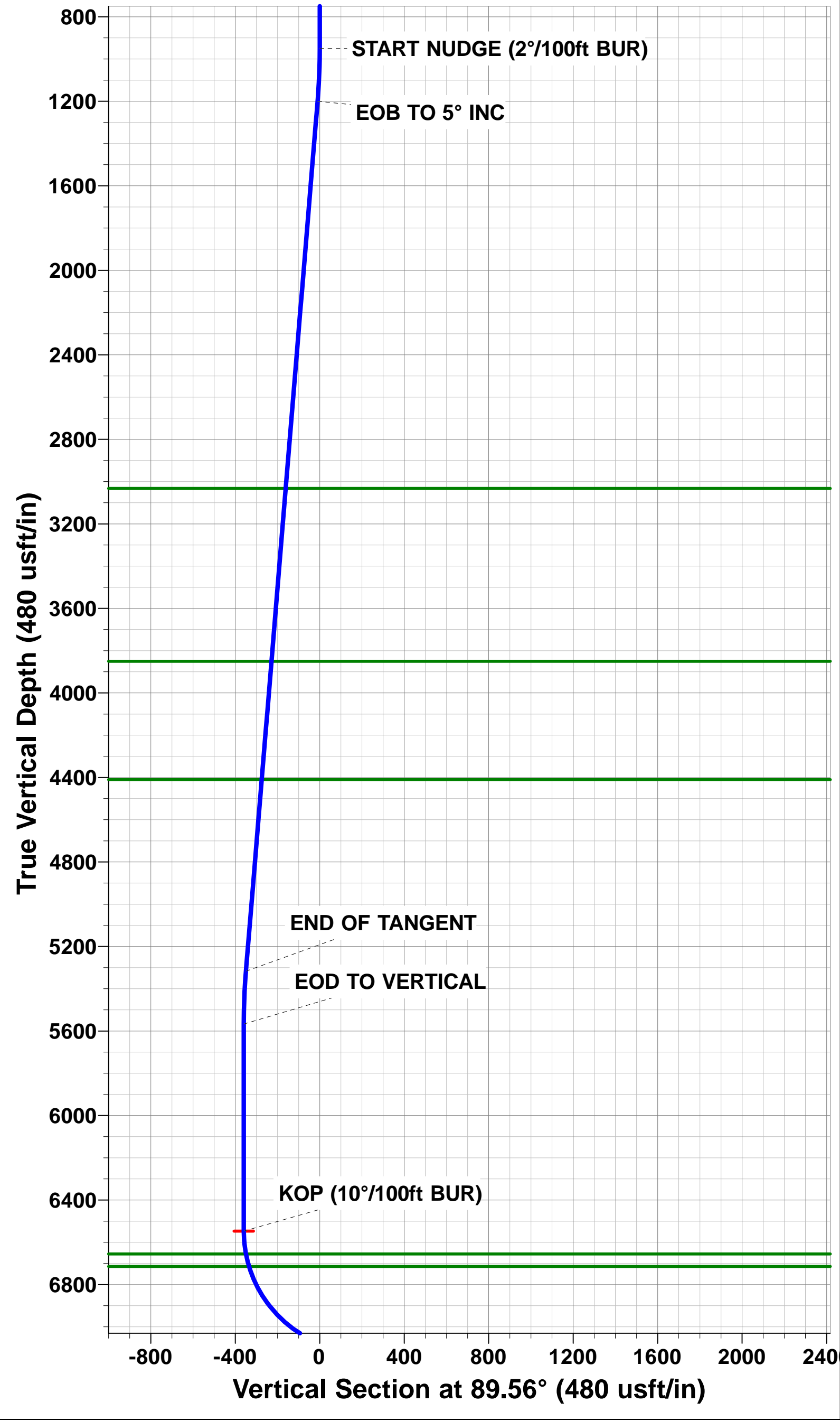


FORMATION TOP DETAILS		
TVDPath	MDPath	Formation
3032.0	3039.3	PARKMAN
3850.0	3860.5	SUSSEX
4410.0	4422.6	SHANNON
6655.0	6672.0	SHARON SPRINGS
6714.0	6732.9	NIOBRARA
7070.0	7222.3	FORT HAYS
7110.0	7356.3	CODELL

North Arrow

Azimuths to True North  
Magnetic North: 8.53°

Magnetic Field  
Strength: 52623.7snT  
Dip Angle: 66.70°  
Date: 28/10/2014  
Model: IGRF2010



# Planning Report



<b>Database:</b>	EDM 5000.1 Single User Db	<b>Local Co-ordinate Reference:</b>	Well FAIRVIEW 11
<b>Company:</b>	EXTRACTION OIL & GAS	<b>TVD Reference:</b>	KB-EST @ 4972.0usft (Original Well Elev)
<b>Project:</b>	WELD COUNTY, COLORADO (NAD 83)	<b>MD Reference:</b>	KB-EST @ 4972.0usft (Original Well Elev)
<b>Site:</b>	NW SW SEC. 5 T2N R68W 6th P.M.	<b>North Reference:</b>	True
<b>Well:</b>	FAIRVIEW 11	<b>Survey Calculation Method:</b>	Minimum Curvature
<b>Wellbore:</b>	ORIGINAL WELLBORE		
<b>Design:</b>	PROPOSAL #2		

<b>Project</b>	WELD COUNTY, COLORADO (NAD 83)		
<b>Map System:</b>	US State Plane 1983	<b>System Datum:</b>	Mean Sea Level
<b>Geo Datum:</b>	North American Datum 1983		
<b>Map Zone:</b>	Colorado Northern Zone		Using geodetic scale factor

<b>Site</b>	NW SW SEC. 5 T2N R68W 6th P.M.		
<b>Site Position:</b>		<b>Northing:</b>	1,303,569.20 usft
<b>From:</b>	Lat/Long	<b>Easting:</b>	3,130,047.26 usft
<b>Position Uncertainty:</b>	0.0 usft	<b>Slot Radius:</b>	1.10000ft
		<b>Latitude:</b>	40.165756
		<b>Longitude:</b>	-105.034667
		<b>Grid Convergence:</b>	0.30 °

<b>Well</b>	FAIRVIEW 11		
<b>Well Position</b>	<b>+N-S</b>	5.1 usft	<b>Northing:</b>
	<b>+E-W</b>	-279.8 usft	<b>Easting:</b>
<b>Position Uncertainty</b>		0.0 usft	<b>Wellhead Elevation:</b>
			<b>Latitude:</b>
			<b>Longitude:</b>
			<b>Ground Level:</b>

<b>Wellbore</b>	ORIGINAL WELLBORE				
<b>Magnetics</b>	<b>Model Name</b>	<b>Sample Date</b>	<b>Declination (°)</b>	<b>Dip Angle (°)</b>	<b>Field Strength (nT)</b>
	IGRF2010	28/10/2014	8.54	66.70	52,624

<b>Design</b>	PROPOSAL #2			
<b>Audit Notes:</b>				
<b>Version:</b>	<b>Phase:</b>	PROTOTYPE	<b>Tie On Depth:</b>	0.0
<b>Vertical Section:</b>	<b>Depth From (TVD) (usft)</b>	<b>+N-S (usft)</b>	<b>+E-W (usft)</b>	<b>Direction (°)</b>
	7,120.0	0.0	0.0	89.56

<b>Plan Sections</b>											
MD (usft)	Inc (°)	Azi (°)	Vertical Depth	SS (usft)	+N-S (usft)	+E-W (usft)	Dogleg Rate (°/100usf)	Build Rate (°/100usf)	Turn Rate (°/100usf)	TFO (°)	Target
0.0	0.00	0.00	0.0	-4,972.0	0.0	0.0	0.00	0.00	0.00	0.00	
950.0	0.00	0.00	950.0	-4,022.0	0.0	0.0	0.00	0.00	0.00	0.00	
1,200.2	5.00	289.33	1,199.9	-3,772.1	3.6	-10.3	2.00	2.00	0.00	289.33	
5,333.2	5.00	289.33	5,317.1	345.1	123.0	-350.5	0.00	0.00	0.00	0.00	
5,583.4	0.00	0.00	5,567.0	595.0	126.6	-360.8	2.00	-2.00	0.00	180.00	
6,563.4	0.00	0.00	6,547.0	1,575.0	126.6	-360.8	0.00	0.00	0.00	0.00	KOP - FAIRVIEW 1
7,463.4	90.00	90.53	7,120.0	2,148.0	121.3	212.1	10.00	10.00	10.06	90.53	7" ICP - FAIRVIEW
14,532.4	90.00	90.53	7,120.0	2,148.0	56.1	7,280.8	0.00	0.00	0.00	11.69	BHL - FAIRVIEW 1

<b>Database:</b>	EDM 5000.1 Single User Db	<b>Local Co-ordinate Reference:</b>	Well FAIRVIEW 11
<b>Company:</b>	EXTRACTION OIL & GAS	<b>TVD Reference:</b>	KB-EST @ 4972.0usft (Original Well Elev)
<b>Project:</b>	WELD COUNTY, COLORADO (NAD 83)	<b>MD Reference:</b>	KB-EST @ 4972.0usft (Original Well Elev)
<b>Site:</b>	NW SW SEC. 5 T2N R68W 6th P.M.	<b>North Reference:</b>	True
<b>Well:</b>	FAIRVIEW 11	<b>Survey Calculation Method:</b>	Minimum Curvature
<b>Wellbore:</b>	ORIGINAL WELLBORE		
<b>Design:</b>	PROPOSAL #2		

## Planned Survey

MD (usft)	Inc (°)	Azi (°)	TVD (usft)	SS (usft)	+N/-S (usft)	+E/-W (usft)	Vertical Section (usft)	Dogleg Rate (°/100usft)	Build Rate (°/100usft)	Turn Rate (°/100usft)
0.0	0.00	0.00	0.0	4,972.00	0.0	0.0	0.0	0.00	0.00	0.00
100.0	0.00	0.00	100.0	4,872.00	0.0	0.0	0.0	0.00	0.00	0.00
200.0	0.00	0.00	200.0	4,772.00	0.0	0.0	0.0	0.00	0.00	0.00
300.0	0.00	0.00	300.0	4,672.00	0.0	0.0	0.0	0.00	0.00	0.00
400.0	0.00	0.00	400.0	4,572.00	0.0	0.0	0.0	0.00	0.00	0.00
500.0	0.00	0.00	500.0	4,472.00	0.0	0.0	0.0	0.00	0.00	0.00
600.0	0.00	0.00	600.0	4,372.00	0.0	0.0	0.0	0.00	0.00	0.00
700.0	0.00	0.00	700.0	4,272.00	0.0	0.0	0.0	0.00	0.00	0.00
800.0	0.00	0.00	800.0	4,172.00	0.0	0.0	0.0	0.00	0.00	0.00
900.0	0.00	0.00	900.0	4,072.00	0.0	0.0	0.0	0.00	0.00	0.00
<b>START NUDGE (2°/100ft BUR)</b>										
950.0	0.00	0.00	950.0	4,022.00	0.0	0.0	0.0	0.00	0.00	0.00
1,000.0	1.00	289.33	1,000.0	3,972.00	0.1	-0.4	-0.4	2.00	2.00	0.00
1,100.0	3.00	289.33	1,099.9	3,872.07	1.3	-3.7	-3.7	2.00	2.00	0.00
1,200.0	5.00	289.33	1,199.7	3,772.32	3.6	-10.3	-10.3	2.00	2.00	0.00
<b>EOB TO 5° INC</b>										
1,200.2	5.00	289.33	1,199.9	3,772.12	3.6	-10.3	-10.3	2.00	2.00	0.00
1,300.0	5.00	289.33	1,299.3	3,672.70	6.5	-18.5	-18.5	0.00	0.00	0.00
1,400.0	5.00	289.33	1,398.9	3,573.08	9.4	-26.7	-26.7	0.00	0.00	0.00
1,500.0	5.00	289.33	1,498.5	3,473.46	12.3	-35.0	-34.9	0.00	0.00	0.00
1,600.0	5.00	289.33	1,598.2	3,373.84	15.2	-43.2	-43.1	0.00	0.00	0.00
1,700.0	5.00	289.33	1,697.8	3,274.22	18.1	-51.4	-51.3	0.00	0.00	0.00
1,800.0	5.00	289.33	1,797.4	3,174.60	20.9	-59.7	-59.5	0.00	0.00	0.00
1,900.0	5.00	289.33	1,897.0	3,074.99	23.8	-67.9	-67.7	0.00	0.00	0.00
2,000.0	5.00	289.33	1,996.6	2,975.37	26.7	-76.1	-75.9	0.00	0.00	0.00
2,100.0	5.00	289.33	2,096.3	2,875.75	29.6	-84.4	-84.1	0.00	0.00	0.00
2,200.0	5.00	289.33	2,195.9	2,776.13	32.5	-92.6	-92.3	0.00	0.00	0.00
2,300.0	5.00	289.33	2,295.5	2,676.51	35.4	-100.8	-100.6	0.00	0.00	0.00
2,400.0	5.00	289.33	2,395.1	2,576.89	38.3	-109.1	-108.8	0.00	0.00	0.00
2,500.0	5.00	289.33	2,494.7	2,477.27	41.2	-117.3	-117.0	0.00	0.00	0.00
2,600.0	5.00	289.33	2,594.3	2,377.65	44.0	-125.5	-125.2	0.00	0.00	0.00
2,700.0	5.00	289.33	2,694.0	2,278.04	46.9	-133.8	-133.4	0.00	0.00	0.00
2,800.0	5.00	289.33	2,793.6	2,178.42	49.8	-142.0	-141.6	0.00	0.00	0.00
2,900.0	5.00	289.33	2,893.2	2,078.80	52.7	-150.2	-149.8	0.00	0.00	0.00
3,000.0	5.00	289.33	2,992.8	1,979.18	55.6	-158.5	-158.0	0.00	0.00	0.00
<b>PARKMAN</b>										
3,039.3	5.00	289.33	3,032.0	1,940.00	56.7	-161.7	-161.2	0.00	0.00	0.00
3,100.0	5.00	289.33	3,092.4	1,879.56	58.5	-166.7	-166.2	0.00	0.00	0.00
3,200.0	5.00	289.33	3,192.1	1,779.94	61.4	-174.9	-174.4	0.00	0.00	0.00
3,300.0	5.00	289.33	3,291.7	1,680.32	64.3	-183.1	-182.6	0.00	0.00	0.00
3,400.0	5.00	289.33	3,391.3	1,580.70	67.2	-191.4	-190.9	0.00	0.00	0.00
3,500.0	5.00	289.33	3,490.9	1,481.09	70.0	-199.6	-199.1	0.00	0.00	0.00
3,600.0	5.00	289.33	3,590.5	1,381.47	72.9	-207.8	-207.3	0.00	0.00	0.00
3,700.0	5.00	289.33	3,690.2	1,281.85	75.8	-216.1	-215.5	0.00	0.00	0.00
3,800.0	5.00	289.33	3,789.8	1,182.23	78.7	-224.3	-223.7	0.00	0.00	0.00
<b>SUSSEX</b>										
3,860.5	5.00	289.33	3,850.0	1,122.00	80.4	-229.3	-228.7	0.00	0.00	0.00
3,900.0	5.00	289.33	3,889.4	1,082.61	81.6	-232.5	-231.9	0.00	0.00	0.00
4,000.0	5.00	289.33	3,989.0	982.99	84.5	-240.8	-240.1	0.00	0.00	0.00
4,100.0	5.00	289.33	4,088.6	883.37	87.4	-249.0	-248.3	0.00	0.00	0.00
4,200.0	5.00	289.33	4,188.2	783.75	90.3	-257.2	-256.5	0.00	0.00	0.00
4,300.0	5.00	289.33	4,287.9	684.14	93.1	-265.5	-264.7	0.00	0.00	0.00
4,400.0	5.00	289.33	4,387.5	584.52	96.0	-273.7	-272.9	0.00	0.00	0.00
<b>SHANNON</b>										

<b>Database:</b>	EDM 5000.1 Single User Db	<b>Local Co-ordinate Reference:</b>	Well FAIRVIEW 11
<b>Company:</b>	EXTRACTION OIL & GAS	<b>TVD Reference:</b>	KB-EST @ 4972.0usft (Original Well Elev)
<b>Project:</b>	WELD COUNTY, COLORADO (NAD 83)	<b>MD Reference:</b>	KB-EST @ 4972.0usft (Original Well Elev)
<b>Site:</b>	NW SW SEC. 5 T2N R68W 6th P.M.	<b>North Reference:</b>	True
<b>Well:</b>	FAIRVIEW 11	<b>Survey Calculation Method:</b>	Minimum Curvature
<b>Wellbore:</b>	ORIGINAL WELLBORE		
<b>Design:</b>	PROPOSAL #2		

Planned Survey										
MD (usft)	Inc (°)	Azi (°)	TVD (usft)	SS (usft)	+N/-S (usft)	+E/-W (usft)	Vertical Section (usft)	Dogleg Rate (°/100usft)	Build Rate (°/100usft)	Turn Rate (°/100usft)
<b>4,422.6</b>	<b>5.00</b>	<b>289.33</b>	<b>4,410.0</b>	<b>562.00</b>	<b>96.7</b>	<b>-275.6</b>	<b>-274.8</b>	<b>0.00</b>	<b>0.00</b>	<b>0.00</b>
4,500.0	5.00	289.33	4,487.1	484.90	98.9	-281.9	-281.2	0.00	0.00	0.00
4,600.0	5.00	289.33	4,586.7	385.28	101.8	-290.2	-289.4	0.00	0.00	0.00
4,700.0	5.00	289.33	4,686.3	285.66	104.7	-298.4	-297.6	0.00	0.00	0.00
4,800.0	5.00	289.33	4,786.0	186.04	107.6	-306.6	-305.8	0.00	0.00	0.00
4,900.0	5.00	289.33	4,885.6	86.42	110.5	-314.9	-314.0	0.00	0.00	0.00
5,000.0	5.00	289.33	4,985.2	-13.20	113.4	-323.1	-322.2	0.00	0.00	0.00
5,100.0	5.00	289.33	5,084.8	-112.82	116.2	-331.3	-330.4	0.00	0.00	0.00
5,200.0	5.00	289.33	5,184.4	-212.43	119.1	-339.5	-338.6	0.00	0.00	0.00
5,300.0	5.00	289.33	5,284.1	-312.05	122.0	-347.8	-346.8	0.00	0.00	0.00
<b>END OF TANGENT</b>										
<b>5,333.2</b>	<b>5.00</b>	<b>289.33</b>	<b>5,317.1</b>	<b>-345.13</b>	<b>123.0</b>	<b>-350.5</b>	<b>-349.6</b>	<b>0.00</b>	<b>0.00</b>	<b>0.00</b>
5,400.0	3.67	289.33	5,383.7	-411.73	124.7	-355.3	-354.3	2.00	-2.00	0.00
5,500.0	1.67	289.33	5,483.6	-511.62	126.2	-359.7	-358.7	2.00	-2.00	0.00
<b>EOD TO VERTICAL</b>										
<b>5,583.4</b>	<b>0.00</b>	<b>0.00</b>	<b>5,567.0</b>	<b>-595.01</b>	<b>126.6</b>	<b>-360.8</b>	<b>-359.8</b>	<b>2.00</b>	<b>-2.00</b>	<b>0.00</b>
5,600.0	0.00	0.00	5,583.6	-611.61	126.6	-360.8	-359.8	0.00	0.00	0.00
5,700.0	0.00	0.00	5,683.6	-711.61	126.6	-360.8	-359.8	0.00	0.00	0.00
5,800.0	0.00	0.00	5,783.6	-811.61	126.6	-360.8	-359.8	0.00	0.00	0.00
5,900.0	0.00	0.00	5,883.6	-911.61	126.6	-360.8	-359.8	0.00	0.00	0.00
6,000.0	0.00	0.00	5,983.6	-1,011.61	126.6	-360.8	-359.8	0.00	0.00	0.00
6,100.0	0.00	0.00	6,083.6	-1,111.61	126.6	-360.8	-359.8	0.00	0.00	0.00
6,200.0	0.00	0.00	6,183.6	-1,211.61	126.6	-360.8	-359.8	0.00	0.00	0.00
6,300.0	0.00	0.00	6,283.6	-1,311.61	126.6	-360.8	-359.8	0.00	0.00	0.00
6,400.0	0.00	0.00	6,383.6	-1,411.61	126.6	-360.8	-359.8	0.00	0.00	0.00
6,500.0	0.00	0.00	6,483.6	-1,511.61	126.6	-360.8	-359.8	0.00	0.00	0.00
<b>KOP (10°/100ft BUR)</b>										
<b>6,563.4</b>	<b>0.00</b>	<b>0.00</b>	<b>6,547.0</b>	<b>-1,575.01</b>	<b>126.6</b>	<b>-360.8</b>	<b>-359.8</b>	<b>0.00</b>	<b>0.00</b>	<b>0.00</b>
6,600.0	3.66	90.53	6,583.6	-1,611.58	126.6	-359.6	-358.7	10.00	10.00	0.00
<b>SHARON SPRINGS</b>										
<b>6,672.0</b>	<b>10.86</b>	<b>90.53</b>	<b>6,655.0</b>	<b>-1,683.00</b>	<b>126.5</b>	<b>-350.5</b>	<b>-349.6</b>	<b>10.00</b>	<b>10.00</b>	<b>0.00</b>
6,700.0	13.66	90.53	6,682.3	-1,710.32	126.5	-344.6	-343.6	10.00	10.00	0.00
<b>NIOBRARA</b>										
<b>6,732.9</b>	<b>16.94</b>	<b>90.53</b>	<b>6,714.0</b>	<b>-1,742.00</b>	<b>126.4</b>	<b>-335.9</b>	<b>-335.0</b>	<b>10.00</b>	<b>10.00</b>	<b>0.00</b>
6,800.0	23.66	90.53	6,776.9	-1,804.94	126.2	-312.7	-311.7	10.00	10.00	0.00
6,900.0	33.66	90.53	6,864.6	-1,892.58	125.7	-264.8	-263.8	10.00	10.00	0.00
7,000.0	43.66	90.53	6,942.6	-1,970.57	125.1	-202.4	-201.4	10.00	10.00	0.00
7,100.0	53.66	90.53	7,008.5	-2,036.54	124.4	-127.4	-126.4	10.00	10.00	0.00
7,200.0	63.66	90.53	7,060.5	-2,088.49	123.7	-42.1	-41.1	10.00	10.00	0.00
<b>FORT HAYS</b>										
<b>7,222.3</b>	<b>65.89</b>	<b>90.53</b>	<b>7,070.0</b>	<b>-2,098.00</b>	<b>123.5</b>	<b>-21.9</b>	<b>-21.0</b>	<b>10.00</b>	<b>10.00</b>	<b>0.00</b>
7,300.0	73.66	90.53	7,096.8	-2,124.84	122.8	50.9	51.9	10.00	10.00	0.00
<b>CODELL</b>										
<b>7,356.3</b>	<b>79.28</b>	<b>90.53</b>	<b>7,110.0</b>	<b>-2,138.00</b>	<b>122.3</b>	<b>105.6</b>	<b>106.5</b>	<b>10.00</b>	<b>10.00</b>	<b>0.00</b>
7,400.0	83.65	90.53	7,116.5	-2,144.49	121.9	148.8	149.8	10.00	10.00	0.00
<b>7" ICP - FAIRVIEW 11 (P2)</b>										
<b>7,463.4</b>	<b>89.99</b>	<b>90.53</b>	<b>7,120.0</b>	<b>-2,148.00</b>	<b>121.3</b>	<b>212.1</b>	<b>213.0</b>	<b>10.00</b>	<b>10.00</b>	<b>0.00</b>
7,500.0	90.00	90.53	7,120.0	-2,148.00	121.0	248.7	249.6	0.01	0.01	0.00
7,600.0	90.00	90.53	7,120.0	-2,148.01	120.1	348.7	349.6	0.00	0.00	0.00
7,700.0	90.00	90.53	7,120.0	-2,148.01	119.1	448.7	449.6	0.00	0.00	0.00
7,800.0	90.00	90.53	7,120.0	-2,148.02	118.2	548.7	549.6	0.00	0.00	0.00
7,900.0	90.00	90.53	7,120.0	-2,148.03	117.3	648.7	649.6	0.00	0.00	0.00
8,000.0	90.00	90.53	7,120.0	-2,148.03	116.4	748.7	749.6	0.00	0.00	0.00



# Planning Report



<b>Database:</b>	EDM 5000.1 Single User Db	<b>Local Co-ordinate Reference:</b>	Well FAIRVIEW 11
<b>Company:</b>	EXTRACTION OIL & GAS	<b>TVD Reference:</b>	KB-EST @ 4972.0usft (Original Well Elev)
<b>Project:</b>	WELD COUNTY, COLORADO (NAD 83)	<b>MD Reference:</b>	KB-EST @ 4972.0usft (Original Well Elev)
<b>Site:</b>	NW SW SEC. 5 T2N R68W 6th P.M.	<b>North Reference:</b>	True
<b>Well:</b>	FAIRVIEW 11	<b>Survey Calculation Method:</b>	Minimum Curvature
<b>Wellbore:</b>	ORIGINAL WELLBORE		
<b>Design:</b>	PROPOSAL #2		

Planned Survey										
MD (usft)	Inc (°)	Azi (°)	TVD (usft)	SS (usft)	+N/-S (usft)	+E/-W (usft)	Vertical Section (usft)	Dogleg Rate (°/100usft)	Build Rate (°/100usft)	Turn Rate (°/100usft)
8,100.0	90.00	90.53	7,120.0	-2,148.04	115.5	848.7	849.5	0.00	0.00	0.00
8,200.0	90.00	90.53	7,120.0	-2,148.04	114.5	948.7	949.5	0.00	0.00	0.00
8,300.0	90.00	90.53	7,120.0	-2,148.05	113.6	1,048.7	1,049.5	0.00	0.00	0.00
8,400.0	90.00	90.53	7,120.1	-2,148.05	112.7	1,148.7	1,149.5	0.00	0.00	0.00
8,500.0	90.00	90.53	7,120.1	-2,148.05	111.8	1,248.7	1,249.5	0.00	0.00	0.00
8,600.0	90.00	90.53	7,120.1	-2,148.06	110.8	1,348.7	1,349.5	0.00	0.00	0.00
8,700.0	90.00	90.53	7,120.1	-2,148.06	109.9	1,448.7	1,449.5	0.00	0.00	0.00
8,800.0	90.00	90.53	7,120.1	-2,148.07	109.0	1,548.6	1,549.4	0.00	0.00	0.00
8,900.0	90.00	90.53	7,120.1	-2,148.07	108.1	1,648.6	1,649.4	0.00	0.00	0.00
9,000.0	90.00	90.53	7,120.1	-2,148.07	107.2	1,748.6	1,749.4	0.00	0.00	0.00
9,100.0	90.00	90.53	7,120.1	-2,148.08	106.2	1,848.6	1,849.4	0.00	0.00	0.00
9,200.0	90.00	90.53	7,120.1	-2,148.08	105.3	1,948.6	1,949.4	0.00	0.00	0.00
9,300.0	90.00	90.53	7,120.1	-2,148.08	104.4	2,048.6	2,049.4	0.00	0.00	0.00
9,400.0	90.00	90.53	7,120.1	-2,148.09	103.5	2,148.6	2,149.4	0.00	0.00	0.00
9,500.0	90.00	90.53	7,120.1	-2,148.09	102.5	2,248.6	2,249.3	0.00	0.00	0.00
9,600.0	90.00	90.53	7,120.1	-2,148.09	101.6	2,348.6	2,349.3	0.00	0.00	0.00
9,700.0	90.00	90.53	7,120.1	-2,148.10	100.7	2,448.6	2,449.3	0.00	0.00	0.00
9,800.0	90.00	90.53	7,120.1	-2,148.10	99.8	2,548.6	2,549.3	0.00	0.00	0.00
9,900.0	90.00	90.53	7,120.1	-2,148.10	98.9	2,648.6	2,649.3	0.00	0.00	0.00
10,000.0	90.00	90.53	7,120.1	-2,148.10	97.9	2,748.6	2,749.3	0.00	0.00	0.00
10,100.0	90.00	90.53	7,120.1	-2,148.10	97.0	2,848.6	2,849.3	0.00	0.00	0.00
10,200.0	90.00	90.53	7,120.1	-2,148.10	96.1	2,948.6	2,949.2	0.00	0.00	0.00
10,300.0	90.00	90.53	7,120.1	-2,148.11	95.2	3,048.6	3,049.2	0.00	0.00	0.00
10,400.0	90.00	90.53	7,120.1	-2,148.11	94.2	3,148.6	3,149.2	0.00	0.00	0.00
10,500.0	90.00	90.53	7,120.1	-2,148.11	93.3	3,248.6	3,249.2	0.00	0.00	0.00
10,600.0	90.00	90.53	7,120.1	-2,148.11	92.4	3,348.6	3,349.2	0.00	0.00	0.00
10,700.0	90.00	90.53	7,120.1	-2,148.11	91.5	3,448.6	3,449.2	0.00	0.00	0.00
10,800.0	90.00	90.53	7,120.1	-2,148.11	90.6	3,548.6	3,549.2	0.00	0.00	0.00
10,900.0	90.00	90.53	7,120.1	-2,148.11	89.6	3,648.6	3,649.1	0.00	0.00	0.00
11,000.0	90.00	90.53	7,120.1	-2,148.11	88.7	3,748.6	3,749.1	0.00	0.00	0.00
11,100.0	90.00	90.53	7,120.1	-2,148.11	87.8	3,848.6	3,849.1	0.00	0.00	0.00
11,200.0	90.00	90.53	7,120.1	-2,148.11	86.9	3,948.5	3,949.1	0.00	0.00	0.00
11,300.0	90.00	90.53	7,120.1	-2,148.11	85.9	4,048.5	4,049.1	0.00	0.00	0.00
11,400.0	90.00	90.53	7,120.1	-2,148.11	85.0	4,148.5	4,149.1	0.00	0.00	0.00
11,500.0	90.00	90.53	7,120.1	-2,148.11	84.1	4,248.5	4,249.1	0.00	0.00	0.00
11,600.0	90.00	90.53	7,120.1	-2,148.11	83.2	4,348.5	4,349.0	0.00	0.00	0.00
11,700.0	90.00	90.53	7,120.1	-2,148.11	82.2	4,448.5	4,449.0	0.00	0.00	0.00
11,800.0	90.00	90.53	7,120.1	-2,148.10	81.3	4,548.5	4,549.0	0.00	0.00	0.00
11,900.0	90.00	90.53	7,120.1	-2,148.10	80.4	4,648.5	4,649.0	0.00	0.00	0.00
12,000.0	90.00	90.53	7,120.1	-2,148.10	79.5	4,748.5	4,749.0	0.00	0.00	0.00
12,100.0	90.00	90.53	7,120.1	-2,148.10	78.6	4,848.5	4,849.0	0.00	0.00	0.00
12,200.0	90.00	90.53	7,120.1	-2,148.10	77.6	4,948.5	4,949.0	0.00	0.00	0.00
12,300.0	90.00	90.53	7,120.1	-2,148.09	76.7	5,048.5	5,048.9	0.00	0.00	0.00
12,400.0	90.00	90.53	7,120.1	-2,148.09	75.8	5,148.5	5,148.9	0.00	0.00	0.00
12,500.0	90.00	90.53	7,120.1	-2,148.09	74.9	5,248.5	5,248.9	0.00	0.00	0.00
12,600.0	90.00	90.53	7,120.1	-2,148.09	73.9	5,348.5	5,348.9	0.00	0.00	0.00
12,700.0	90.00	90.53	7,120.1	-2,148.08	73.0	5,448.5	5,448.9	0.00	0.00	0.00
12,800.0	90.00	90.53	7,120.1	-2,148.08	72.1	5,548.5	5,548.9	0.00	0.00	0.00
12,900.0	90.00	90.53	7,120.1	-2,148.08	71.2	5,648.5	5,648.9	0.00	0.00	0.00
13,000.0	90.00	90.53	7,120.1	-2,148.07	70.2	5,748.5	5,748.8	0.00	0.00	0.00
13,100.0	90.00	90.53	7,120.1	-2,148.07	69.3	5,848.5	5,848.8	0.00	0.00	0.00
13,200.0	90.00	90.53	7,120.1	-2,148.07	68.4	5,948.5	5,948.8	0.00	0.00	0.00
13,300.0	90.00	90.53	7,120.1	-2,148.06	67.5	6,048.5	6,048.8	0.00	0.00	0.00
13,400.0	90.00	90.53	7,120.1	-2,148.06	66.5	6,148.5	6,148.8	0.00	0.00	0.00

# Planning Report



<b>Database:</b>	EDM 5000.1 Single User Db	<b>Local Co-ordinate Reference:</b>	Well FAIRVIEW 11
<b>Company:</b>	EXTRACTION OIL & GAS	<b>TVD Reference:</b>	KB-EST @ 4972.0usft (Original Well Elev)
<b>Project:</b>	WELD COUNTY, COLORADO (NAD 83)	<b>MD Reference:</b>	KB-EST @ 4972.0usft (Original Well Elev)
<b>Site:</b>	NW SW SEC. 5 T2N R68W 6th P.M.	<b>North Reference:</b>	True
<b>Well:</b>	FAIRVIEW 11	<b>Survey Calculation Method:</b>	Minimum Curvature
<b>Wellbore:</b>	ORIGINAL WELLBORE		
<b>Design:</b>	PROPOSAL #2		

Planned Survey										
MD (usft)	Inc (°)	Azi (°)	TVD (usft)	SS (usft)	+N/-S (usft)	+E/-W (usft)	Vertical Section (usft)	Dogleg Rate (°/100usft)	Build Rate (°/100usft)	Turn Rate (°/100usft)
13,500.0	90.00	90.53	7,120.1	-2,148.05	65.6	6,248.4	6,248.8	0.00	0.00	0.00
13,600.0	90.00	90.53	7,120.1	-2,148.05	64.7	6,348.4	6,348.8	0.00	0.00	0.00
13,700.0	90.00	90.53	7,120.0	-2,148.05	63.8	6,448.4	6,448.7	0.00	0.00	0.00
13,800.0	90.00	90.53	7,120.0	-2,148.04	62.9	6,548.4	6,548.7	0.00	0.00	0.00
13,900.0	90.00	90.53	7,120.0	-2,148.04	61.9	6,648.4	6,648.7	0.00	0.00	0.00
14,000.0	90.00	90.53	7,120.0	-2,148.03	61.0	6,748.4	6,748.7	0.00	0.00	0.00
14,100.0	90.00	90.53	7,120.0	-2,148.03	60.1	6,848.4	6,848.7	0.00	0.00	0.00
14,200.0	90.00	90.53	7,120.0	-2,148.02	59.2	6,948.4	6,948.7	0.00	0.00	0.00
14,300.0	90.00	90.53	7,120.0	-2,148.01	58.2	7,048.4	7,048.7	0.00	0.00	0.00
14,400.0	90.00	90.53	7,120.0	-2,148.01	57.3	7,148.4	7,148.6	0.00	0.00	0.00
14,500.0	90.00	90.53	7,120.0	-2,148.00	56.4	7,248.4	7,248.6	0.00	0.00	0.00
<b>BHL - FAIRVIEW 11 (P2)</b>										
<b>14,532.4</b>	<b>90.00</b>	<b>90.53</b>	<b>7,120.0</b>	<b>-2,148.00</b>	<b>56.1</b>	<b>7,280.8</b>	<b>7,281.0</b>	<b>0.00</b>	<b>0.00</b>	<b>0.00</b>

Formations						
MD (usft)	TVD (usft)	Name	Lithology	Dip (°)	Dip Direction (°)	
3,039.3	3,032.0	PARKMAN		0.00		
3,860.5	3,850.0	SUSSEX		0.00		
4,422.6	4,410.0	SHANNON		0.00		
6,672.0	6,655.0	SHARON SPRINGS		0.00		
6,732.9	6,714.0	NIOBRARA		0.00		
7,222.3	7,070.0	FORT HAYS		0.00		
7,356.3	7,110.0	CODELL		0.00		

Plan Annotations				
MD (usft)	TVD (usft)	Local Coordinates		Comment
		+N/-S (usft)	+E/-W (usft)	
950.0	950.0	0.0	0.0	START NUDGE (2°/100ft BUR)
1,200.2	1,199.9	3.6	-10.3	EOB TO 5° INC
5,333.2	5,317.1	123.0	-350.5	END OF TANGENT
5,583.4	5,567.0	126.6	-360.8	EOD TO VERTICAL
6,563.4	6,547.0	126.6	-360.8	KOP (10°/100ft BUR)
7,463.4	7,120.0	121.3	212.1	7" ICP - FAIRVIEW 11 (P2)
14,532.4	7,120.0	56.1	7,280.8	BHL - FAIRVIEW 11 (P2)