

WELL LOCATION CERTIFICATE: FAIRVIEW 9

SECTION 5, TOWNSHIP 2 NORTH, RANGE 68 WEST, 6TH P.M.

NW COR. SEC. 5
1004.10' W.C. EAST
3 1/4" ALUM. CAP
PLS 38285

N 89°22'03" E 2638.57'

N 89°11'56" E 2695.79'

NE COR. SEC. 5
3 1/4" ALUM. CAP
PLS 17662

N 1/4 COR. SEC. 5
2 1/2" ALUM. CAP
PLS 36073

SURFACE LOCATION
GROUND ELEVATION= 4947'
NAD83
LATITUDE= 40.165767°
LONGITUDE= 105.035468°

LANDING POINT LOCATION
NAD83
LATITUDE= 40.167695°
LONGITUDE= 105.034870°

BOTTOM HOLE LOCATION
NAD83
LATITUDE= 40.167513°
LONGITUDE= 105.009594°

NOTES:
BH LOCATION PROVIDED BY CLIENT.
LAND SURFACE USE-IRRIGATED CROP
SEE ATTACHED MAP FOR ADDITIONAL
IMPROVEMENTS WITHIN 500'.

PDOP= 1.6
GPS OPERATOR: ALAN HNIZDO

5

LP- 2560' FSL
460' FWL

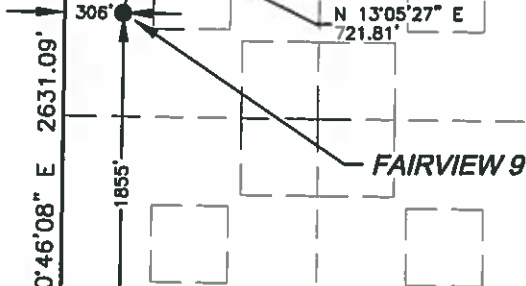
C 1/4 COR. SEC. 5
3 1/4" ALUM. CAP
PLS 22098

W 1/4 COR. SEC. 5
2" ALUM. CAP
PLS 25937

S 89°46'19" E 7064.02'

BH- 2560' FSL
2195' FWL

E 1/4 COR. SEC. 5
3 1/4" ALUM. CAP
PLS 38285



SE COR. SEC. 5
2" ALUM. CAP
PLS 13466

SW COR. SEC. 5
3 1/4" ALUM. CAP
ILLEGIBLE

N 89°13'04" W 2666.62'

S 1/4 COR. SEC. 5
3 1/4" ALUM. CAP
PLS 7239

N 88°51'50" W 2661.34'



SCALE: 1"=1000'

WELL FAIRVIEW 9 TO BE LOCATED 1855' FSL AND 306' FWL

LEGEND

- = EXISTING MONUMENT
- = CALCULATED POSITION
- = PROPOSED WELL
- ◆ = EXISTING WELL
- ▲ = BOTTOM HOLE
- ▲ = LANDING POINT
- LP = LANDING POINT
- BH = BOTTOM HOLE

NOTES:

- THIS FIELD SURVEY CONFORMS TO THE MINIMUM STANDARDS SET BY THE C.O.G.C.C., RULE NO. 215
- BEARINGS AND DISTANCE SHOWN HEREON ARE GRID AND BASED ON THE COLORADO STATE PLANE COORDINATE SYSTEM, NAD 83/2011 BETWEEN MONUMENTS AS LABELED HEREON AND ELEVATIONS SHOWN ARE NAVD 88, AS DERIVED BY GPS OBSERVATIONS.
- GRID DISTANCES ARE SHOWN, AS MEASURED IN THE FIELD, WITH TIES TO WELLS MEASURED PERPENDICULAR TO SECTION LINES.

I, MICHAEL L. POOL, A LICENSED PROFESSIONAL LAND SURVEYOR IN THE STATE OF COLORADO DO HEREBY CERTIFY TO **EXTRACTION OIL & GAS**, THAT THE SURVEY AND WELL LOCATION CERTIFICATE SHOWN HEREON WERE DONE BY ME OR UNDER MY DIRECT SUPERVISION AND THAT THE DRAWING SHOWN HEREON ACCURATELY DEPICTS THE PROPOSED LOCATION OF THE WELL. THIS CERTIFICATE DOES NOT REPRESENT A LAND SURVEY PLAT OR IMPROVEMENT SURVEY PLAT AS DEFINED BY C.R.S. 38-51-102 AND CANNOT BE RELIED UPON TO DETERMINE OWNERSHIP.

MICHAEL L. POOL, PLS 38304
COLORADO LICENSED PROFESSIONAL LAND SURVEYOR
FOR AND ON BEHALF OF P.F.S., LLC



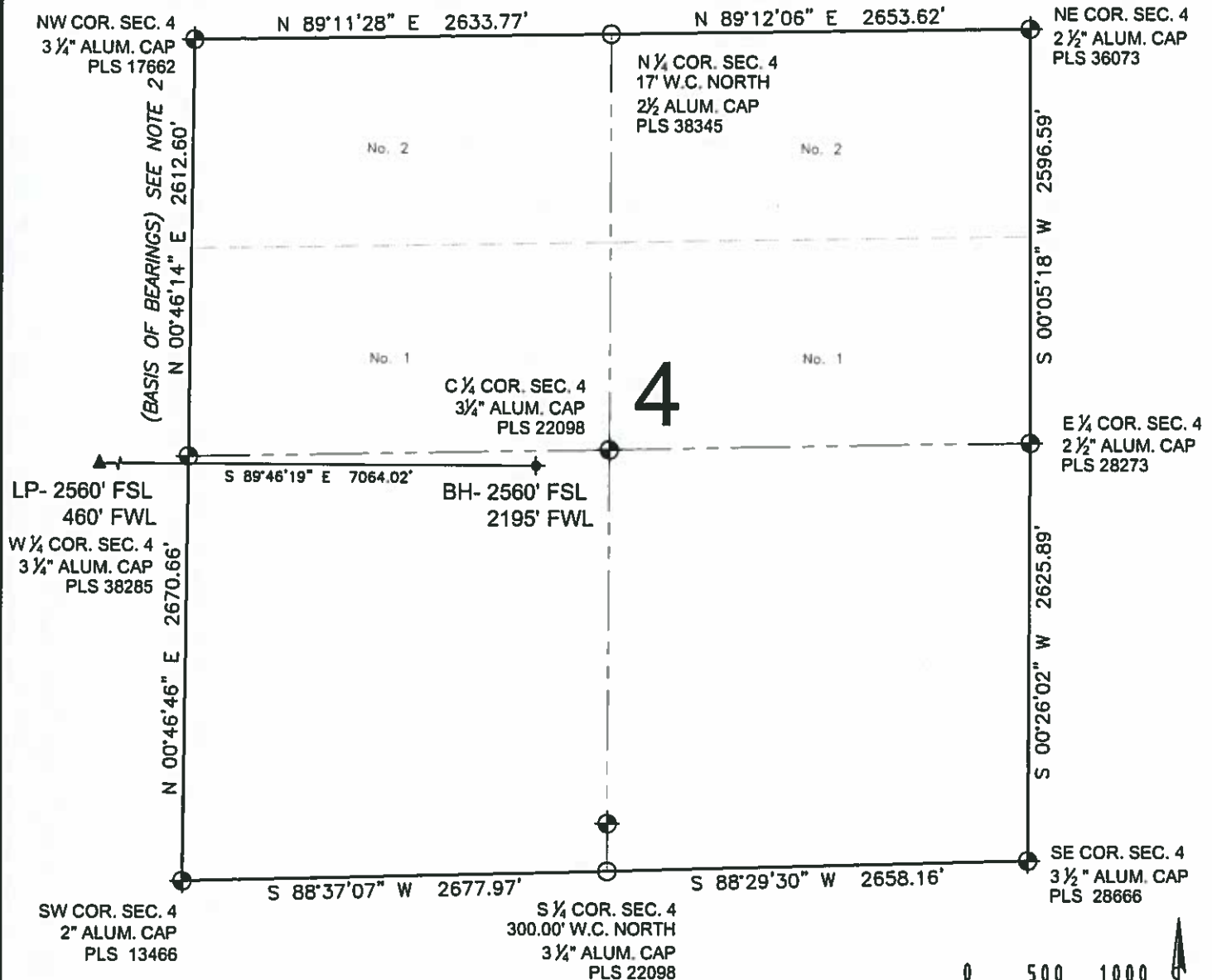
SHEET 1 OF 2

PREPARED BY: PFS Petroleum Field Services, LLC 7336 Hilkey Circle Denver, CO 80221	FIELD DATE: 07-26-14 DRAWING DATE: 07-28-14 BY: WDW CHECKED: MDC	SURFACE LOCATION: NW 1/4 SW 1/4, SEC. 5, T2N, R68W, 6TH P.M. WELD COUNTY, COLORADO
---	---	---

NOTICE: ACCORDING TO COLORADO LAW YOU MUST COMMENCE ANY LEGAL ACTION BASED UPON ANY DEFECT IN THIS SURVEY WITHIN THREE YEARS AFTER YOU FIRST DISCOVER SUCH DEFECT. IN NO EVENT MAY ANY ACTION BASED UPON ANY DEFECT IN THIS SURVEY BE COMMENCED MORE THAN TEN YEARS FROM THIS SAID DATE OF THIS CERTIFICATION SHOWN HEREON.

WELL LOCATION CERTIFICATE: FAIRVIEW 9

SECTION 4, TOWNSHIP 2 NORTH, RANGE 68 WEST, 6TH P.M.



LEGEND

- ◉ = EXISTING MONUMENT
- ◊ = CALCULATED POSITION
- = PROPOSED WELL
- ◆ = EXISTING WELL
- ⬮ = BOTTOM HOLE
- ▲ = LANDING POINT
- LP = LANDING POINT
- BH = BOTTOM HOLE

NOTES:

- THIS FIELD SURVEY CONFORMS TO THE MINIMUM STANDARDS SET BY THE C.O.G.C., RULE NO. 215
- BEARINGS AND DISTANCE SHOWN HEREON ARE GRID AND BASED ON THE COLORADO STATE PLANE COORDINATE SYSTEM, NAD 83/2011 BETWEEN MONUMENTS AS LABELED HEREON AND ELEVATIONS SHOWN ARE NAVD 88, AS DERIVED BY GPS OBSERVATIONS.
- GRID DISTANCES ARE SHOWN, AS MEASURED IN THE FIELD, WITH TIES TO WELLS MEASURED PERPENDICULAR TO SECTION LINES.

SHEET 2 OF 2

MICHAEL L. POOL, PLS 38304
COLORADO LICENSED PROFESSIONAL LAND SURVEYOR
FOR AND ON BEHALF OF P.F.S., LLC

PREPARED BY: PFS Petroleum Field Services, LLC 15335 Hilltop Circle Denver, CO 80221	FIELD DATE: 07-26-14	SURFACE LOCATION: NW 1/4 SW 1/4, SEC. 5, T2N, R68W, 6TH P.M.
BY: WDW	CHECKED: MDC	WELD COUNTY, COLORADO

NOTICE: ACCORDING TO COLORADO LAW YOU MUST COMMENCE ANY LEGAL ACTION BASED UPON ANY DEFECT IN THIS SURVEY WITHIN THREE YEARS AFTER YOU FIRST DISCOVER SUCH DEFECT. IN NO EVENT MAY ANY ACTION BASED UPON ANY DEFECT IN THIS SURVEY BE COMMENCED MORE THAN TEN YEARS FROM THIS SAID DATE OF THIS CERTIFICATION SHOWN HEREON.