



March 3, 2015

Mr. Matt Lepore, Director  
Colorado Oil and Gas Conservation Commission  
1120 Lincoln Street, Suite 801  
Denver, Colorado 80203

7535 Hilltop Circle  
Denver, CO 80221  
[www.petro-fs.com](http://www.petro-fs.com)

**RE: COGCC Rule 318A.e.: Proposed Spacing Unit  
Fairview 10 Well: NWSW, Section 5, Township 2 North, Range 68 West  
Weld County, Colorado**

Dear Mr. Lepore:

Extraction Oil and Gas, LLC (Extraction) is planning to drill the above referenced well in accordance with the provisions set out in Colorado Oil and Gas Conservation Commission (COGCC) Rule 318A.e. Extraction's Proposed Spacing Unit consists of:

S½NW¼, N½SW¼ of Section 4, Township 2 North, Range 68 West  
S½N½, N½S½ of Section 5, Township 2 North, Range 68 West  
Containing 480.00 acres, more or less.

Extraction is not the only owner within the Proposed Spacing Unit and has provided notice to the remaining owners, as required by COGCC Rule 318A.e.(5). Copies of the required notification letters are on file at Extraction's office. The required thirty (30) day notice period has elapsed absent the receipt by Extraction of any objection to their proposal by the owners within the Proposed Spacing Unit for the subject well.

Enclosed is the Proposed Spacing Unit Exhibit to assist in your review and approval of Extraction's proposed Application for Permit to Drill for the Fairview 10 Well. Many thanks for your attention to this matter.

Respectfully,

Jeff Annable  
Regulatory Technician  
Agent for Extraction Oil and Gas, LLC

:ja

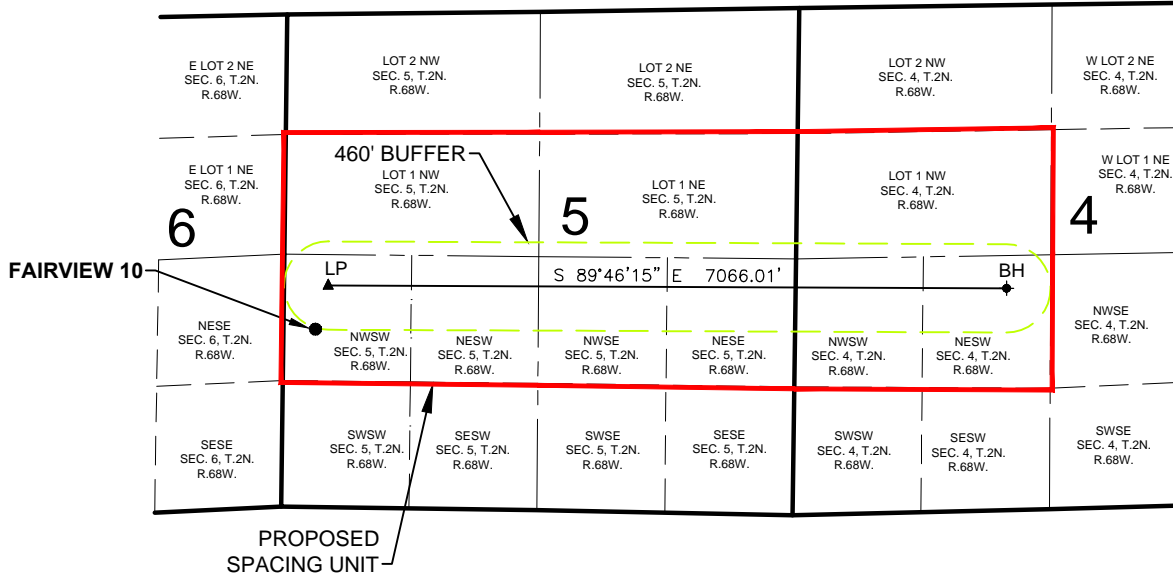
Enclosure: Proposed Spacing Unit Exhibit

*We are what we repeatedly do. Excellence, then, is not an act, but a habit.*

*-Aristotle*

# PROPOSED 318A.e. SPACING UNIT

## SECTION 4 & 5, TOWNSHIP 2 NORTH, RANGE 68 WEST, 6TH P.M.



WELL **FAIRVIEW 10** TO BE LOCATED 1855' FSL AND 278' FWL, SEC. 5, T2N, R68W

### SURFACE LOCATION

NAD83  
LATITUDE= 40.165769°  
LONGITUDE= 105.035568°

### LANDING POINT LOCATION

NAD83  
LATITUDE= 40.167009°  
LONGITUDE= 105.034887°

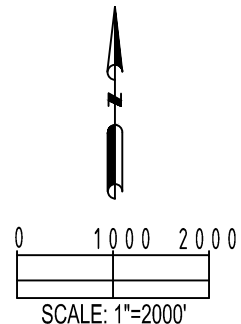
### BOTTOM HOLE LOCATION


NAD83  
LATITUDE= 40.166827°  
LONGITUDE= 105.009604°

### LEGEND

- = PROPOSED WELL
- ▲ = LANDING POINT
- ◆ = BOTTOM HOLE
- LP = LANDING POINT
- BH = BOTTOM HOLE

SHEET 10 OF 11



<div>PREPARED BY:</div> <div> Petroleum Field Services, LLC 7535 Hilltop Circle Denver, CO 80221</div>	<div>FIELD DATE:</div> <div>07-26-14</div>	<div>SURFACE LOCATION:</div> <div>NW 1/4 SW 1/4, SEC. 5, T2N, R68W, 6TH P.M. WELD COUNTY, COLORADO</div>
	<div>DRAWING DATE:</div> <div>11-05-14</div>	
	<div>BY:</div> <div>MDCA</div> <div>CHECKED:</div> <div>WDW</div>	