

EXTRACTION OIL & GAS

WELD COUNTY, COLORADO (NAD 83)

NW SW SEC. 5 T2N R68W 6th P.M.

FAIRVIEW 10

ORIGINAL WELLBORE

09 November, 2014

Plan: PROPOSAL #2

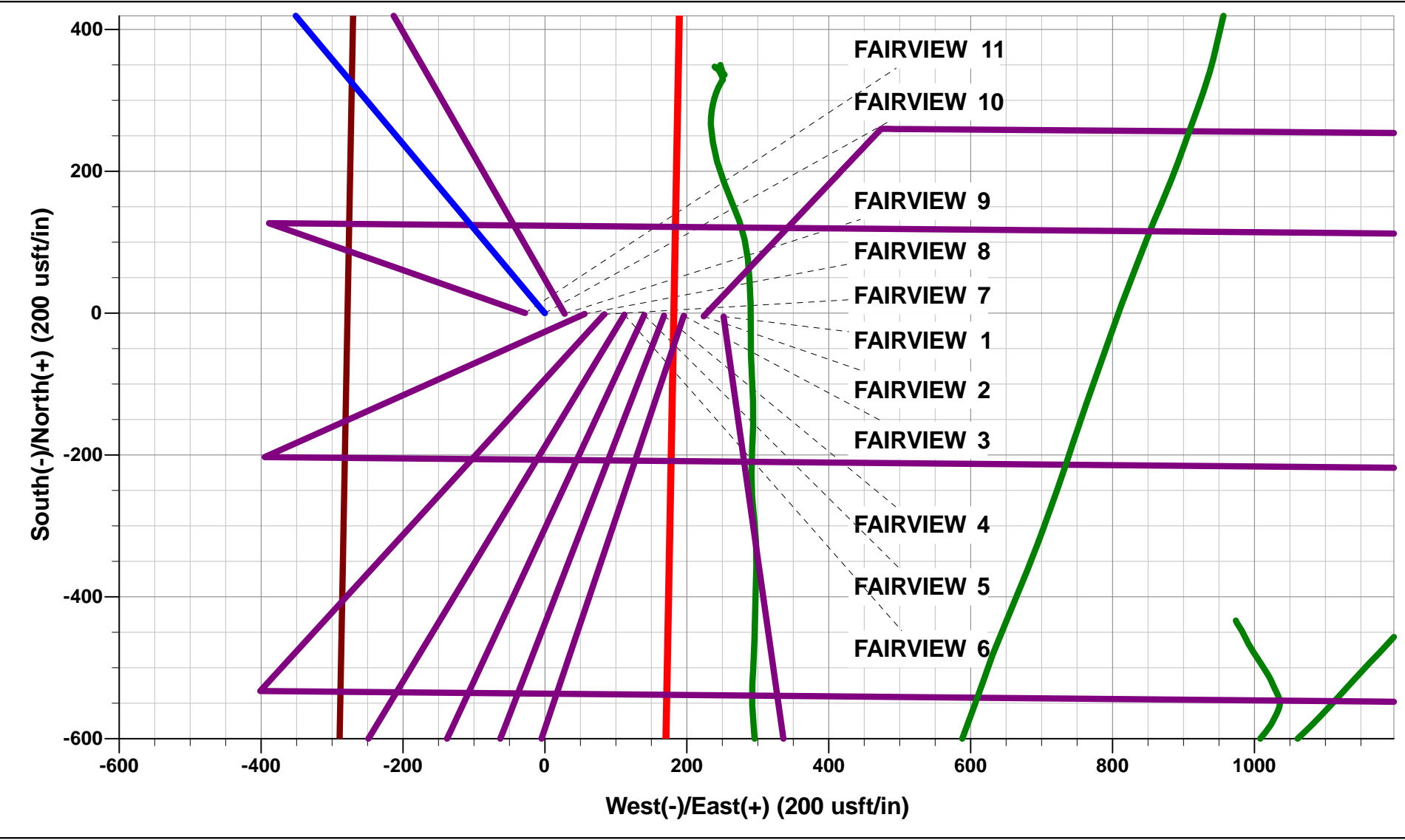




Project: WELD COUNTY, COLORADO (NAD 83)
Site: NW SW SEC. 5 T2N R68W 6th P.M.
Well: FAIRVIEW 10
Wellbore: ORIGINAL WELLBORE
Design: PROPOSAL #2

ANNOTATIONS									
TVD	MD	Inc	Azi	+N/-S	+E/-W	VSect	Dep	Annotation	
1050.0	1050.0	0.00	0.00	0.0	0.0	0.0	0.0	START NUDGE (2°/100ft BUR)	
1401.2	1402.1	7.04	320.06	16.6	-13.9	-13.0	21.6	EOB TO 7.04° INC	
5875.8	5910.7	7.04	320.06	440.4	-368.7	-344.8	574.4	END OF TANGENT	
6227.0	6262.8	0.00	0.00	457.0	-382.6	-357.8	596.0	EOD TO VERTICAL	
6257.0	6292.8	0.00	0.00	457.0	-382.6	-357.8	596.0	KOP (10°/100ft BUR)	
6830.0	7192.8	89.99	90.53	451.7	190.3	214.1	1169.0	7" ICP - FAIRVIEW 10 (P2)	
6830.0	14259.2	90.00	90.53	386.5	7256.4	7266.7	8235.4	BHL - FAIRVIEW 10 (P2)	

WELLBORE TARGET DETAILS (LAT/LONG)					
Name	TVD	+N/-S	+E/-W	Latitude	Longitude
KOP - FAIRVIEW 10 (P2)	6257.0	457.0	-382.6	40.167023	-105.036937
7" ICP - FAIRVIEW 10 (P2)	6830.0	451.7	190.3	40.167009	-105.034887
BHL - FAIRVIEW 10 (P2)	6830.0	386.5	7256.4	40.166827	-105.009604



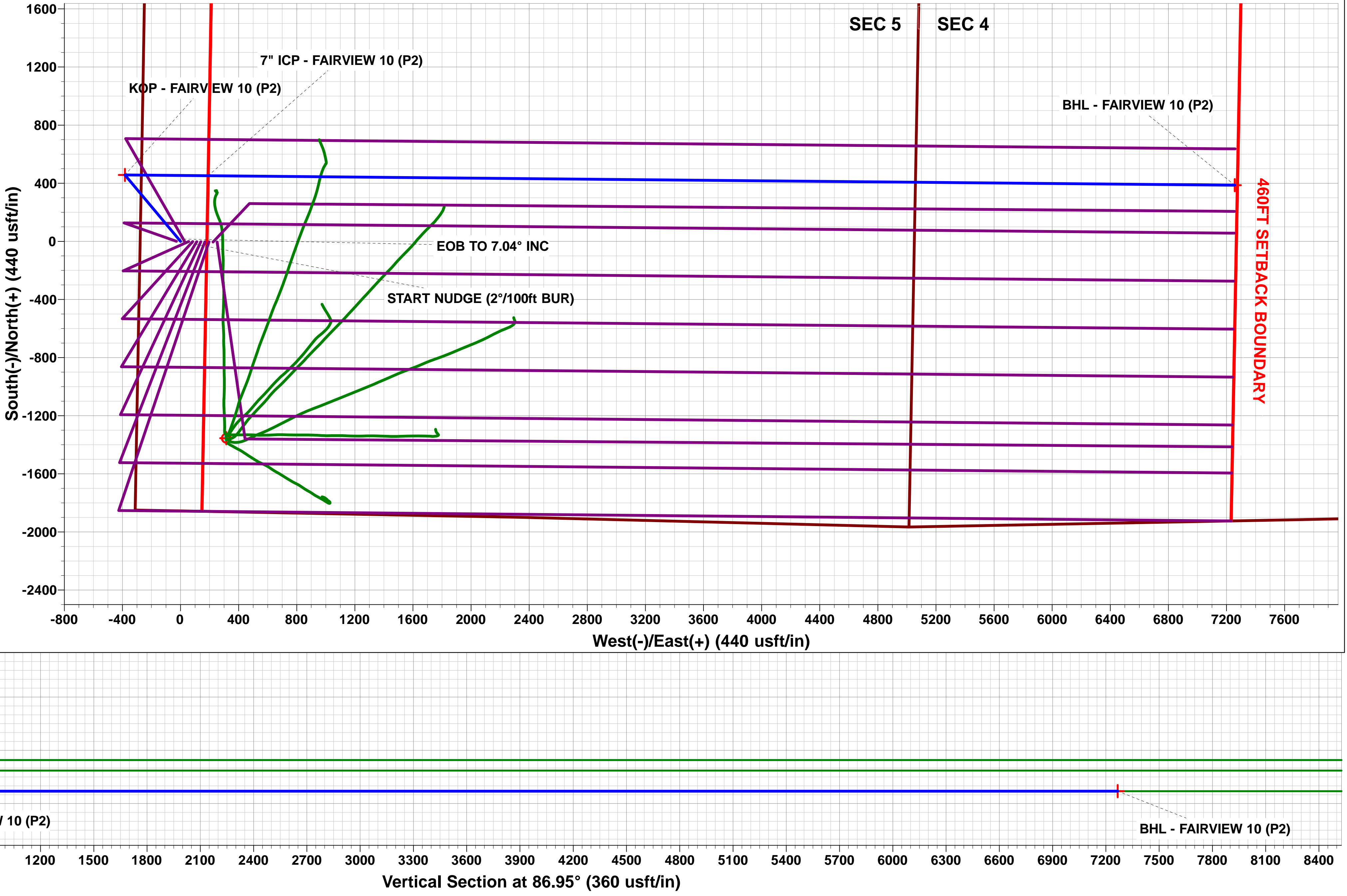
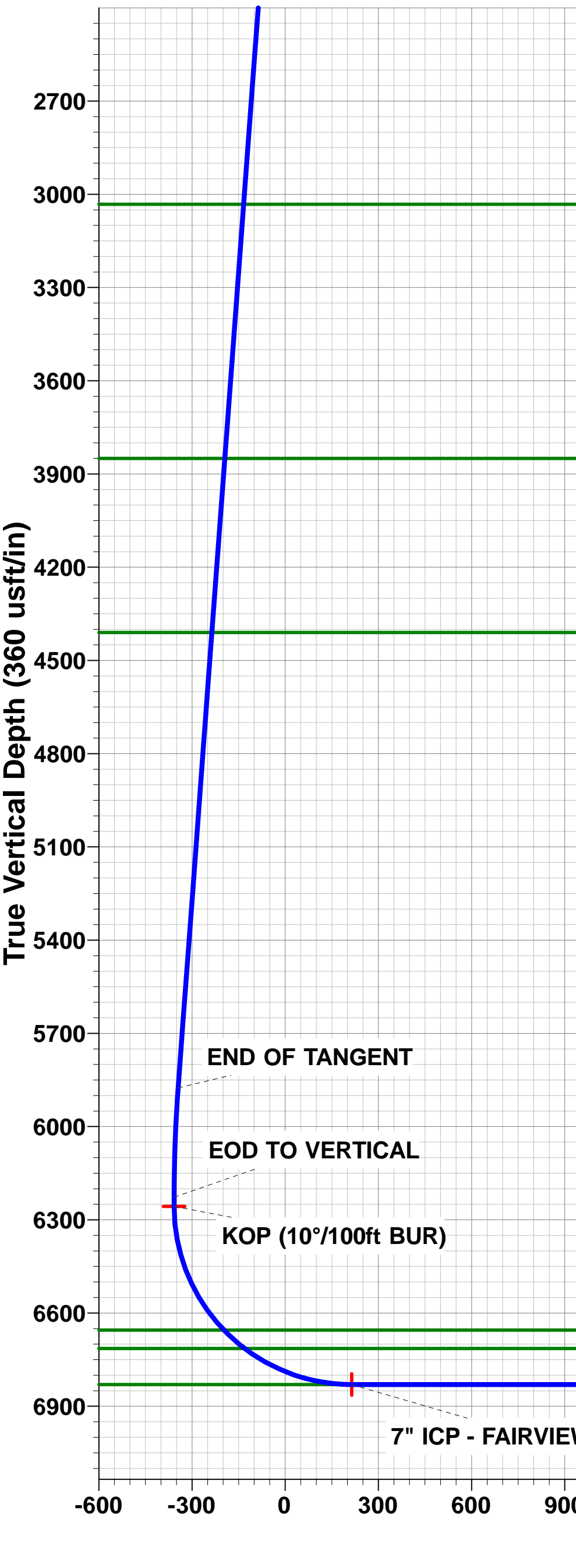
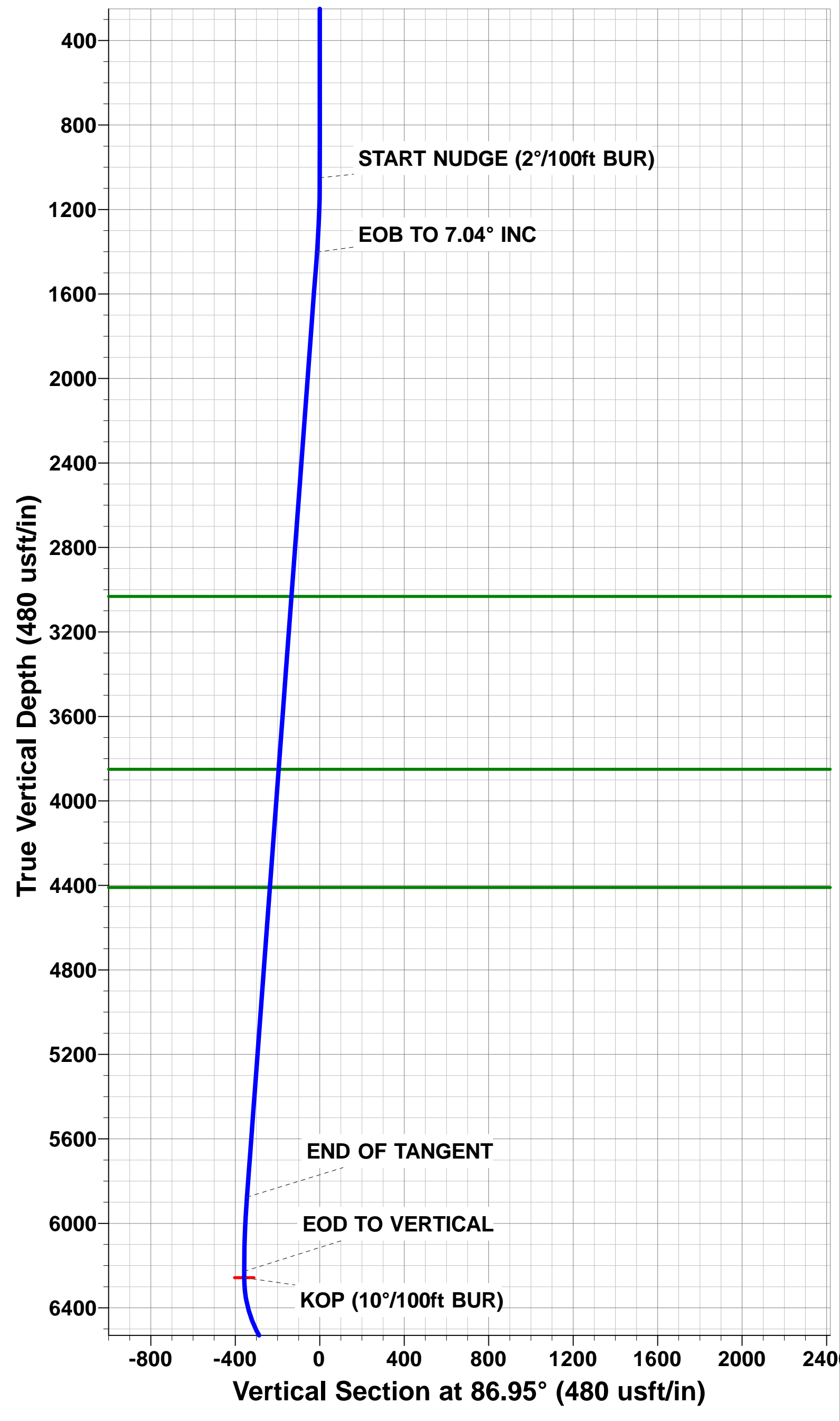
FORMATION TOP DETAILS		
TVDPath	MDPath	Formation
3032.0	3045.3	PARKMAN
3850.0	3869.5	SUSSEX
4410.0	4433.8	SHANNON
6655.0	6732.8	SHARON SPRINGS
6714.0	6821.8	NIOBRARA
6830.0	7192.8	NIO B TARGET

T

M

Azimuths to True North
Magnetic North: 8.53°

Magnetic Field
Strength: 52623.7snT
Dip Angle: 66.70°
Date: 28/10/2014
Model: IGRF2010



Planning Report



Database:	EDM 5000.1 Single User Db	Local Co-ordinate Reference:	Well FAIRVIEW 10
Company:	EXTRACTION OIL & GAS	TVD Reference:	KB-EST @ 4972.0usft (Original Well Elev)
Project:	WELD COUNTY, COLORADO (NAD 83)	MD Reference:	KB-EST @ 4972.0usft (Original Well Elev)
Site:	NW SW SEC. 5 T2N R68W 6th P.M.	North Reference:	True
Well:	FAIRVIEW 10	Survey Calculation Method:	Minimum Curvature
Wellbore:	ORIGINAL WELLBORE		
Design:	PROPOSAL #2		

Project	WELD COUNTY, COLORADO (NAD 83)		
Map System:	US State Plane 1983	System Datum:	Mean Sea Level
Geo Datum:	North American Datum 1983		
Map Zone:	Colorado Northern Zone		Using geodetic scale factor

Site	NW SW SEC. 5 T2N R68W 6th P.M.		
Site Position:		Northing:	1,303,569.20 usft
From:	Lat/Long	Easting:	3,130,047.26 usft
Position Uncertainty:	0.0 usft	Slot Radius:	1.10000 ft
		Latitude:	40.165756
		Longitude:	-105.034667
		Grid Convergence:	0.30 °

Well	FAIRVIEW 10		
Well Position	+N-S	4.7 usft	Northing:
	+E-W	-251.8 usft	Easting:
Position Uncertainty		0.0 usft	Wellhead Elevation:
			Latitude:
			Longitude:
			Ground Level:

Wellbore	ORIGINAL WELLBORE				
Magnetics	Model Name	Sample Date	Declination (°)	Dip Angle (°)	Field Strength (nT)
	IGRF2010	28/10/2014	8.54	66.70	52,624

Design	PROPOSAL #2			
Audit Notes:				
Version:	Phase:	PROTOTYPE	Tie On Depth:	0.0
Vertical Section:	Depth From (TVD) (usft)	+N-S (usft)	+E-W (usft)	Direction (°)
	6,830.0	0.0	0.0	86.95

Plan Sections											
MD (usft)	Inc (°)	Azi (°)	Vertical Depth	SS (usft)	+N-S (usft)	+E-W (usft)	Dogleg Rate (°/100usf)	Build Rate (°/100usf)	Turn Rate (°/100usf)	TFO (°)	Target
0.0	0.00	0.00	0.0	-4,972.0	0.0	0.0	0.00	0.00	0.00	0.00	
1,050.0	0.00	0.00	1,050.0	-3,922.0	0.0	0.0	0.00	0.00	0.00	0.00	
1,402.1	7.04	320.06	1,401.3	-3,570.7	16.6	-13.9	2.00	2.00	0.00	320.06	
5,910.7	7.04	320.06	5,875.7	903.7	440.4	-368.7	0.00	0.00	0.00	0.00	
6,262.8	0.00	0.00	6,227.0	1,255.0	457.0	-382.6	2.00	-2.00	0.00	180.00	
6,292.8	0.00	0.00	6,257.0	1,285.0	457.0	-382.6	0.00	0.00	0.00	0.00	KOP - FAIRVIEW 1
7,192.8	90.00	90.53	6,830.0	1,858.0	451.7	190.3	10.00	10.00	10.06	90.53	7" ICP - FAIRVIEW
14,259.2	90.00	90.53	6,830.0	1,858.0	386.5	7,256.4	0.00	0.00	0.00	31.58	BHL - FAIRVIEW 1

Database:	EDM 5000.1 Single User Db	Local Co-ordinate Reference:	Well FAIRVIEW 10
Company:	EXTRACTION OIL & GAS	TVD Reference:	KB-EST @ 4972.0usft (Original Well Elev)
Project:	WELD COUNTY, COLORADO (NAD 83)	MD Reference:	KB-EST @ 4972.0usft (Original Well Elev)
Site:	NW SW SEC. 5 T2N R68W 6th P.M.	North Reference:	True
Well:	FAIRVIEW 10	Survey Calculation Method:	Minimum Curvature
Wellbore:	ORIGINAL WELLBORE		
Design:	PROPOSAL #2		

Planned Survey										
MD (usft)	Inc (°)	Azi (°)	TVD (usft)	SS (usft)	+N/-S (usft)	+E/-W (usft)	Vertical Section (usft)	Dogleg Rate (°/100usft)	Build Rate (°/100usft)	Turn Rate (°/100usft)
0.0	0.00	0.00	0.0	4,972.00	0.0	0.0	0.0	0.00	0.00	0.00
100.0	0.00	0.00	100.0	4,872.00	0.0	0.0	0.0	0.00	0.00	0.00
200.0	0.00	0.00	200.0	4,772.00	0.0	0.0	0.0	0.00	0.00	0.00
300.0	0.00	0.00	300.0	4,672.00	0.0	0.0	0.0	0.00	0.00	0.00
400.0	0.00	0.00	400.0	4,572.00	0.0	0.0	0.0	0.00	0.00	0.00
500.0	0.00	0.00	500.0	4,472.00	0.0	0.0	0.0	0.00	0.00	0.00
600.0	0.00	0.00	600.0	4,372.00	0.0	0.0	0.0	0.00	0.00	0.00
700.0	0.00	0.00	700.0	4,272.00	0.0	0.0	0.0	0.00	0.00	0.00
800.0	0.00	0.00	800.0	4,172.00	0.0	0.0	0.0	0.00	0.00	0.00
900.0	0.00	0.00	900.0	4,072.00	0.0	0.0	0.0	0.00	0.00	0.00
1,000.0	0.00	0.00	1,000.0	3,972.00	0.0	0.0	0.0	0.00	0.00	0.00
START NUDGE (2°/100ft BUR)										
1,050.0	0.00	0.00	1,050.0	3,922.00	0.0	0.0	0.0	0.00	0.00	0.00
1,100.0	1.00	320.06	1,100.0	3,872.00	0.3	-0.3	-0.3	2.00	2.00	0.00
1,200.0	3.00	320.06	1,199.9	3,772.07	3.0	-2.5	-2.4	2.00	2.00	0.00
1,300.0	5.00	320.06	1,299.7	3,672.32	8.4	-7.0	-6.5	2.00	2.00	0.00
1,400.0	7.00	320.06	1,399.1	3,572.87	16.4	-13.7	-12.8	2.00	2.00	0.00
EOB TO 7.04° INC										
1,402.1	7.04	320.06	1,401.2	3,570.79	16.6	-13.9	-13.0	2.00	2.00	0.00
1,500.0	7.04	320.06	1,498.4	3,473.62	25.8	-21.6	-20.2	0.00	0.00	0.00
1,600.0	7.04	320.06	1,597.6	3,374.38	35.2	-29.4	-27.5	0.00	0.00	0.00
1,700.0	7.04	320.06	1,696.9	3,275.13	44.6	-37.3	-34.9	0.00	0.00	0.00
1,800.0	7.04	320.06	1,796.1	3,175.89	54.0	-45.2	-42.3	0.00	0.00	0.00
1,900.0	7.04	320.06	1,895.4	3,076.64	63.4	-53.1	-49.6	0.00	0.00	0.00
2,000.0	7.04	320.06	1,994.6	2,977.40	72.8	-60.9	-57.0	0.00	0.00	0.00
2,100.0	7.04	320.06	2,093.8	2,878.15	82.2	-68.8	-64.3	0.00	0.00	0.00
2,200.0	7.04	320.06	2,193.1	2,778.91	91.6	-76.7	-71.7	0.00	0.00	0.00
2,300.0	7.04	320.06	2,292.3	2,679.66	101.0	-84.5	-79.1	0.00	0.00	0.00
2,400.0	7.04	320.06	2,391.6	2,580.41	110.4	-92.4	-86.4	0.00	0.00	0.00
2,500.0	7.04	320.06	2,490.8	2,481.17	119.8	-100.3	-93.8	0.00	0.00	0.00
2,600.0	7.04	320.06	2,590.1	2,381.92	129.2	-108.2	-101.1	0.00	0.00	0.00
2,700.0	7.04	320.06	2,689.3	2,282.68	138.6	-116.0	-108.5	0.00	0.00	0.00
2,800.0	7.04	320.06	2,788.6	2,183.43	148.0	-123.9	-115.9	0.00	0.00	0.00
2,900.0	7.04	320.06	2,887.8	2,084.19	157.4	-131.8	-123.2	0.00	0.00	0.00
3,000.0	7.04	320.06	2,987.1	1,984.94	166.8	-139.6	-130.6	0.00	0.00	0.00
PARKMAN										
3,045.3	7.04	320.06	3,032.0	1,940.00	171.0	-143.2	-133.9	0.00	0.00	0.00
3,100.0	7.04	320.06	3,086.3	1,885.70	176.2	-147.5	-137.9	0.00	0.00	0.00
3,200.0	7.04	320.06	3,185.5	1,786.45	185.6	-155.4	-145.3	0.00	0.00	0.00
3,300.0	7.04	320.06	3,284.8	1,687.21	195.0	-163.3	-152.7	0.00	0.00	0.00
3,400.0	7.04	320.06	3,384.0	1,587.96	204.4	-171.1	-160.0	0.00	0.00	0.00
3,500.0	7.04	320.06	3,483.3	1,488.71	213.8	-179.0	-167.4	0.00	0.00	0.00
3,600.0	7.04	320.06	3,582.5	1,389.47	223.2	-186.9	-174.7	0.00	0.00	0.00
3,700.0	7.04	320.06	3,681.8	1,290.22	232.6	-194.7	-182.1	0.00	0.00	0.00
3,800.0	7.04	320.06	3,781.0	1,190.98	242.0	-202.6	-189.4	0.00	0.00	0.00
SUSSEX										
3,869.5	7.04	320.06	3,850.0	1,122.00	248.5	-208.1	-194.6	0.00	0.00	0.00
3,900.0	7.04	320.06	3,880.3	1,091.73	251.4	-210.5	-196.8	0.00	0.00	0.00
4,000.0	7.04	320.06	3,979.5	992.49	260.8	-218.3	-204.2	0.00	0.00	0.00
4,100.0	7.04	320.06	4,078.8	893.24	270.2	-226.2	-211.5	0.00	0.00	0.00
4,200.0	7.04	320.06	4,178.0	794.00	279.6	-234.1	-218.9	0.00	0.00	0.00
4,300.0	7.04	320.06	4,277.2	694.75	289.0	-242.0	-226.2	0.00	0.00	0.00
4,400.0	7.04	320.06	4,376.5	595.51	298.4	-249.8	-233.6	0.00	0.00	0.00
SHANNON										

Planning Report



Database:	EDM 5000.1 Single User Db	Local Co-ordinate Reference:	Well FAIRVIEW 10
Company:	EXTRACTION OIL & GAS	TVD Reference:	KB-EST @ 4972.0usft (Original Well Elev)
Project:	WELD COUNTY, COLORADO (NAD 83)	MD Reference:	KB-EST @ 4972.0usft (Original Well Elev)
Site:	NW SW SEC. 5 T2N R68W 6th P.M.	North Reference:	True
Well:	FAIRVIEW 10	Survey Calculation Method:	Minimum Curvature
Wellbore:	ORIGINAL WELLBORE		
Design:	PROPOSAL #2		

Planned Survey

MD (usft)	Inc (°)	Azi (°)	TVD (usft)	SS (usft)	+N/-S (usft)	+E/-W (usft)	Vertical Section (usft)	Dogleg Rate (°/100usft)	Build Rate (°/100usft)	Turn Rate (°/100usft)
4,433.8	7.04	320.06	4,410.0	562.00	301.6	-252.5	-236.1	0.00	0.00	0.00
4,500.0	7.04	320.06	4,475.7	496.26	307.8	-257.7	-241.0	0.00	0.00	0.00
4,600.0	7.04	320.06	4,575.0	397.01	317.2	-265.6	-248.3	0.00	0.00	0.00
4,700.0	7.04	320.06	4,674.2	297.77	326.6	-273.4	-255.7	0.00	0.00	0.00
4,800.0	7.04	320.06	4,773.5	198.52	336.0	-281.3	-263.0	0.00	0.00	0.00
4,900.0	7.04	320.06	4,872.7	99.28	345.4	-289.2	-270.4	0.00	0.00	0.00
5,000.0	7.04	320.06	4,972.0	0.03	354.8	-297.1	-277.8	0.00	0.00	0.00
5,100.0	7.04	320.06	5,071.2	-99.21	364.2	-304.9	-285.1	0.00	0.00	0.00
5,200.0	7.04	320.06	5,170.5	-198.46	373.6	-312.8	-292.5	0.00	0.00	0.00
5,300.0	7.04	320.06	5,269.7	-297.70	383.0	-320.7	-299.8	0.00	0.00	0.00
5,400.0	7.04	320.06	5,368.9	-396.95	392.4	-328.5	-307.2	0.00	0.00	0.00
5,500.0	7.04	320.06	5,468.2	-496.20	401.8	-336.4	-314.6	0.00	0.00	0.00
5,600.0	7.04	320.06	5,567.4	-595.44	411.2	-344.3	-321.9	0.00	0.00	0.00
5,700.0	7.04	320.06	5,666.7	-694.69	420.6	-352.2	-329.3	0.00	0.00	0.00
5,800.0	7.04	320.06	5,765.9	-793.93	430.0	-360.0	-336.6	0.00	0.00	0.00
5,900.0	7.04	320.06	5,865.2	-893.18	439.4	-367.9	-344.0	0.00	0.00	0.00
END OF TANGENT										
5,910.7	7.04	320.06	5,875.8	-903.80	440.4	-368.7	-344.8	0.00	0.00	0.00
6,000.0	5.26	320.06	5,964.6	-992.58	447.8	-374.9	-350.5	2.00	-2.00	0.00
6,100.0	3.26	320.06	6,064.3	-1,092.30	453.5	-379.6	-355.0	2.00	-2.00	0.00
6,200.0	1.26	320.06	6,164.2	-1,192.22	456.5	-382.2	-357.3	2.00	-2.00	0.00
EOD TO VERTICAL										
6,262.8	0.00	0.00	6,227.0	-1,255.01	457.0	-382.6	-357.8	2.00	-2.00	0.00
KOP (10°/100ft BUR)										
6,292.8	0.00	0.00	6,257.0	-1,285.01	457.0	-382.6	-357.8	0.00	0.00	0.00
6,300.0	0.72	90.53	6,264.2	-1,292.21	457.0	-382.6	-357.7	10.01	10.01	0.00
6,400.0	10.72	90.53	6,363.6	-1,391.59	456.9	-372.6	-347.8	10.00	10.00	0.00
6,500.0	20.72	90.53	6,459.7	-1,487.72	456.7	-345.5	-320.8	10.00	10.00	0.00
6,600.0	30.72	90.53	6,549.7	-1,577.70	456.3	-302.2	-277.5	10.00	10.00	0.00
6,700.0	40.72	90.53	6,630.8	-1,658.79	455.7	-243.9	-219.3	10.00	10.00	0.00
SHARON SPRINGS										
6,732.8	43.99	90.53	6,655.0	-1,683.00	455.5	-221.8	-197.3	10.00	10.00	0.00
6,800.0	50.72	90.53	6,700.5	-1,728.52	455.1	-172.4	-148.0	10.00	10.00	0.00
NIOBRARA										
6,821.8	52.90	90.53	6,714.0	-1,742.00	454.9	-155.3	-130.9	10.00	10.00	0.00
6,900.0	60.72	90.53	6,756.8	-1,784.78	454.3	-89.9	-65.6	10.00	10.00	0.00
7,000.0	70.72	90.53	6,797.9	-1,825.85	453.5	1.1	25.3	10.00	10.00	0.00
7,100.0	80.72	90.53	6,822.5	-1,850.49	452.6	97.9	121.9	10.00	10.00	0.00
7" ICP - FAIRVIEW 10 (P2) - NIO B TARGET										
7,192.8	90.00	90.53	6,830.0	-1,858.00	451.7	190.3	214.1	10.00	10.00	0.00
7,200.0	90.00	90.53	6,830.0	-1,858.00	451.7	197.5	221.3	0.00	0.00	0.00
7,300.0	90.00	90.53	6,830.0	-1,858.01	450.8	297.5	321.1	0.00	0.00	0.00
7,400.0	90.00	90.53	6,830.0	-1,858.02	449.8	397.5	420.9	0.00	0.00	0.00
7,500.0	90.00	90.53	6,830.0	-1,858.02	448.9	497.5	520.7	0.00	0.00	0.00
7,600.0	90.00	90.53	6,830.0	-1,858.03	448.0	597.5	620.5	0.00	0.00	0.00
7,700.0	90.00	90.53	6,830.0	-1,858.04	447.1	697.5	720.3	0.00	0.00	0.00
7,800.0	90.00	90.53	6,830.0	-1,858.04	446.2	797.5	820.1	0.00	0.00	0.00
7,900.0	90.00	90.53	6,830.0	-1,858.05	445.2	897.5	919.9	0.00	0.00	0.00
8,000.0	90.00	90.53	6,830.1	-1,858.05	444.3	997.5	1,019.7	0.00	0.00	0.00
8,100.0	90.00	90.53	6,830.1	-1,858.06	443.4	1,097.5	1,119.5	0.00	0.00	0.00
8,200.0	90.00	90.53	6,830.1	-1,858.07	442.5	1,197.5	1,219.3	0.00	0.00	0.00
8,300.0	90.00	90.53	6,830.1	-1,858.07	441.6	1,297.5	1,319.1	0.00	0.00	0.00
8,400.0	90.00	90.53	6,830.1	-1,858.08	440.6	1,397.5	1,418.9	0.00	0.00	0.00

Planning Report



Database:	EDM 5000.1 Single User Db	Local Co-ordinate Reference:	Well FAIRVIEW 10
Company:	EXTRACTION OIL & GAS	TVD Reference:	KB-EST @ 4972.0usft (Original Well Elev)
Project:	WELD COUNTY, COLORADO (NAD 83)	MD Reference:	KB-EST @ 4972.0usft (Original Well Elev)
Site:	NW SW SEC. 5 T2N R68W 6th P.M.	North Reference:	True
Well:	FAIRVIEW 10	Survey Calculation Method:	Minimum Curvature
Wellbore:	ORIGINAL WELLBORE		
Design:	PROPOSAL #2		

Planned Survey										
MD (usft)	Inc (°)	Azi (°)	TVD (usft)	SS (usft)	+N/-S (usft)	+E/-W (usft)	Vertical Section (usft)	Dogleg Rate (°/100usft)	Build Rate (°/100usft)	Turn Rate (°/100usft)
8,500.0	90.00	90.53	6,830.1	-1,858.08	439.7	1,497.5	1,518.7	0.00	0.00	0.00
8,600.0	90.00	90.53	6,830.1	-1,858.09	438.8	1,597.5	1,618.5	0.00	0.00	0.00
8,700.0	90.00	90.53	6,830.1	-1,858.09	437.9	1,697.4	1,718.3	0.00	0.00	0.00
8,800.0	90.00	90.53	6,830.1	-1,858.09	437.0	1,797.4	1,818.1	0.00	0.00	0.00
8,900.0	90.00	90.53	6,830.1	-1,858.10	436.0	1,897.4	1,917.9	0.00	0.00	0.00
9,000.0	90.00	90.53	6,830.1	-1,858.10	435.1	1,997.4	2,017.8	0.00	0.00	0.00
9,100.0	90.00	90.53	6,830.1	-1,858.11	434.2	2,097.4	2,117.6	0.00	0.00	0.00
9,200.0	90.00	90.53	6,830.1	-1,858.11	433.3	2,197.4	2,217.4	0.00	0.00	0.00
9,300.0	90.00	90.53	6,830.1	-1,858.11	432.4	2,297.4	2,317.2	0.00	0.00	0.00
9,400.0	90.00	90.53	6,830.1	-1,858.11	431.4	2,397.4	2,417.0	0.00	0.00	0.00
9,500.0	90.00	90.53	6,830.1	-1,858.12	430.5	2,497.4	2,516.8	0.00	0.00	0.00
9,600.0	90.00	90.53	6,830.1	-1,858.12	429.6	2,597.4	2,616.6	0.00	0.00	0.00
9,700.0	90.00	90.53	6,830.1	-1,858.12	428.7	2,697.4	2,716.4	0.00	0.00	0.00
9,800.0	90.00	90.53	6,830.1	-1,858.12	427.7	2,797.4	2,816.2	0.00	0.00	0.00
9,900.0	90.00	90.53	6,830.1	-1,858.13	426.8	2,897.4	2,916.0	0.00	0.00	0.00
10,000.0	90.00	90.53	6,830.1	-1,858.13	425.9	2,997.4	3,015.8	0.00	0.00	0.00
10,100.0	90.00	90.53	6,830.1	-1,858.13	425.0	3,097.4	3,115.6	0.00	0.00	0.00
10,200.0	90.00	90.53	6,830.1	-1,858.13	424.1	3,197.4	3,215.4	0.00	0.00	0.00
10,300.0	90.00	90.53	6,830.1	-1,858.13	423.1	3,297.4	3,315.2	0.00	0.00	0.00
10,400.0	90.00	90.53	6,830.1	-1,858.13	422.2	3,397.4	3,415.0	0.00	0.00	0.00
10,500.0	90.00	90.53	6,830.1	-1,858.13	421.3	3,497.4	3,514.8	0.00	0.00	0.00
10,600.0	90.00	90.53	6,830.1	-1,858.13	420.4	3,597.4	3,614.6	0.00	0.00	0.00
10,700.0	90.00	90.53	6,830.1	-1,858.13	419.4	3,697.4	3,714.4	0.00	0.00	0.00
10,800.0	90.00	90.53	6,830.1	-1,858.13	418.5	3,797.4	3,814.2	0.00	0.00	0.00
10,900.0	90.00	90.53	6,830.1	-1,858.13	417.6	3,897.4	3,914.1	0.00	0.00	0.00
11,000.0	90.00	90.53	6,830.1	-1,858.13	416.7	3,997.4	4,013.9	0.00	0.00	0.00
11,100.0	90.00	90.53	6,830.1	-1,858.13	415.7	4,097.3	4,113.7	0.00	0.00	0.00
11,200.0	90.00	90.53	6,830.1	-1,858.13	414.8	4,197.3	4,213.5	0.00	0.00	0.00
11,300.0	90.00	90.53	6,830.1	-1,858.13	413.9	4,297.3	4,313.3	0.00	0.00	0.00
11,400.0	90.00	90.53	6,830.1	-1,858.13	413.0	4,397.3	4,413.1	0.00	0.00	0.00
11,500.0	90.00	90.53	6,830.1	-1,858.13	412.0	4,497.3	4,512.9	0.00	0.00	0.00
11,600.0	90.00	90.53	6,830.1	-1,858.13	411.1	4,597.3	4,612.7	0.00	0.00	0.00
11,700.0	90.00	90.53	6,830.1	-1,858.12	410.2	4,697.3	4,712.5	0.00	0.00	0.00
11,800.0	90.00	90.53	6,830.1	-1,858.12	409.3	4,797.3	4,812.3	0.00	0.00	0.00
11,900.0	90.00	90.53	6,830.1	-1,858.12	408.4	4,897.3	4,912.1	0.00	0.00	0.00
12,000.0	90.00	90.53	6,830.1	-1,858.12	407.4	4,997.3	5,011.9	0.00	0.00	0.00
12,100.0	90.00	90.53	6,830.1	-1,858.11	406.5	5,097.3	5,111.7	0.00	0.00	0.00
12,200.0	90.00	90.53	6,830.1	-1,858.11	405.6	5,197.3	5,211.5	0.00	0.00	0.00
12,300.0	90.00	90.53	6,830.1	-1,858.11	404.7	5,297.3	5,311.3	0.00	0.00	0.00
12,400.0	90.00	90.53	6,830.1	-1,858.10	403.7	5,397.3	5,411.1	0.00	0.00	0.00
12,500.0	90.00	90.53	6,830.1	-1,858.10	402.8	5,497.3	5,510.9	0.00	0.00	0.00
12,600.0	90.00	90.53	6,830.1	-1,858.10	401.9	5,597.3	5,610.7	0.00	0.00	0.00
12,700.0	90.00	90.53	6,830.1	-1,858.09	400.9	5,697.3	5,710.5	0.00	0.00	0.00
12,800.0	90.00	90.53	6,830.1	-1,858.09	400.0	5,797.3	5,810.3	0.00	0.00	0.00
12,900.0	90.00	90.53	6,830.1	-1,858.08	399.1	5,897.3	5,910.2	0.00	0.00	0.00
13,000.0	90.00	90.53	6,830.1	-1,858.08	398.2	5,997.3	6,010.0	0.00	0.00	0.00
13,100.0	90.00	90.53	6,830.1	-1,858.07	397.2	6,097.3	6,109.8	0.00	0.00	0.00
13,200.0	90.00	90.53	6,830.1	-1,858.07	396.3	6,197.3	6,209.6	0.00	0.00	0.00
13,300.0	90.00	90.53	6,830.1	-1,858.06	395.4	6,297.3	6,309.4	0.00	0.00	0.00
13,400.0	90.00	90.53	6,830.1	-1,858.06	394.5	6,397.2	6,409.2	0.00	0.00	0.00
13,500.0	90.00	90.53	6,830.1	-1,858.05	393.5	6,497.2	6,509.0	0.00	0.00	0.00
13,600.0	90.00	90.53	6,830.0	-1,858.05	392.6	6,597.2	6,608.8	0.00	0.00	0.00
13,700.0	90.00	90.53	6,830.0	-1,858.04	391.7	6,697.2	6,708.6	0.00	0.00	0.00
13,800.0	90.00	90.53	6,830.0	-1,858.03	390.8	6,797.2	6,808.4	0.00	0.00	0.00

Database:	EDM 5000.1 Single User Db	Local Co-ordinate Reference:	Well FAIRVIEW 10
Company:	EXTRACTION OIL & GAS	TVD Reference:	KB-EST @ 4972.0usft (Original Well Elev)
Project:	WELD COUNTY, COLORADO (NAD 83)	MD Reference:	KB-EST @ 4972.0usft (Original Well Elev)
Site:	NW SW SEC. 5 T2N R68W 6th P.M.	North Reference:	True
Well:	FAIRVIEW 10	Survey Calculation Method:	Minimum Curvature
Wellbore:	ORIGINAL WELLBORE		
Design:	PROPOSAL #2		

Planned Survey

MD (usft)	Inc (°)	Azi (°)	TVD (usft)	SS (usft)	+N/-S (usft)	+E/-W (usft)	Vertical Section (usft)	Dogleg Rate (°/100usft)	Build Rate (°/100usft)	Turn Rate (°/100usft)
13,900.0	90.00	90.53	6,830.0	-1,858.03	389.8	6,897.2	6,908.2	0.00	0.00	0.00
14,000.0	90.00	90.53	6,830.0	-1,858.02	388.9	6,997.2	7,008.0	0.00	0.00	0.00
14,100.0	90.00	90.53	6,830.0	-1,858.01	388.0	7,097.2	7,107.8	0.00	0.00	0.00
14,200.0	90.00	90.53	6,830.0	-1,858.00	387.0	7,197.2	7,207.6	0.00	0.00	0.00
BHL - FAIRVIEW 10 (P2)										
14,259.2	90.00	90.53	6,830.0	-1,858.00	386.5	7,256.4	7,266.7	0.00	0.00	0.00

Formations

MD (usft)	TVD (usft)	Name	Lithology	Dip (°)	Dip Direction (°)
3,045.3	3,032.0	PARKMAN		0.00	
3,869.5	3,850.0	SUSSEX		0.00	
4,433.8	4,410.0	SHANNON		0.00	
6,732.8	6,655.0	SHARON SPRINGS		0.00	
6,821.8	6,714.0	NIOBRARA		0.00	
7,192.8	6,830.0	NIO B TARGET		0.00	

Plan Annotations

MD (usft)	TVD (usft)	Local Coordinates		Comment
		+N/-S (usft)	+E/-W (usft)	
1,050.0	1,050.0	0.0	0.0	START NUDGE (2°/100ft BUR)
1,402.1	1,401.2	16.6	-13.9	EOB TO 7.04° INC
5,910.7	5,875.8	440.4	-368.7	END OF TANGENT
6,262.8	6,227.0	457.0	-382.6	EOD TO VERTICAL
6,292.8	6,257.0	457.0	-382.6	KOP (10°/100ft BUR)
7,192.8	6,830.0	451.7	190.3	7" ICP - FAIRVIEW 10 (P2)
14,259.2	6,830.0	386.5	7,256.4	BHL - FAIRVIEW 10 (P2)