

EXTRACTION OIL & GAS

WELD COUNTY, COLORADO (NAD 83)

NW SW SEC. 5 T2N R68W 6th P.M.

FAIRVIEW 6

ORIGINAL WELLBORE

09 November, 2014

Plan: PROPOSAL #2

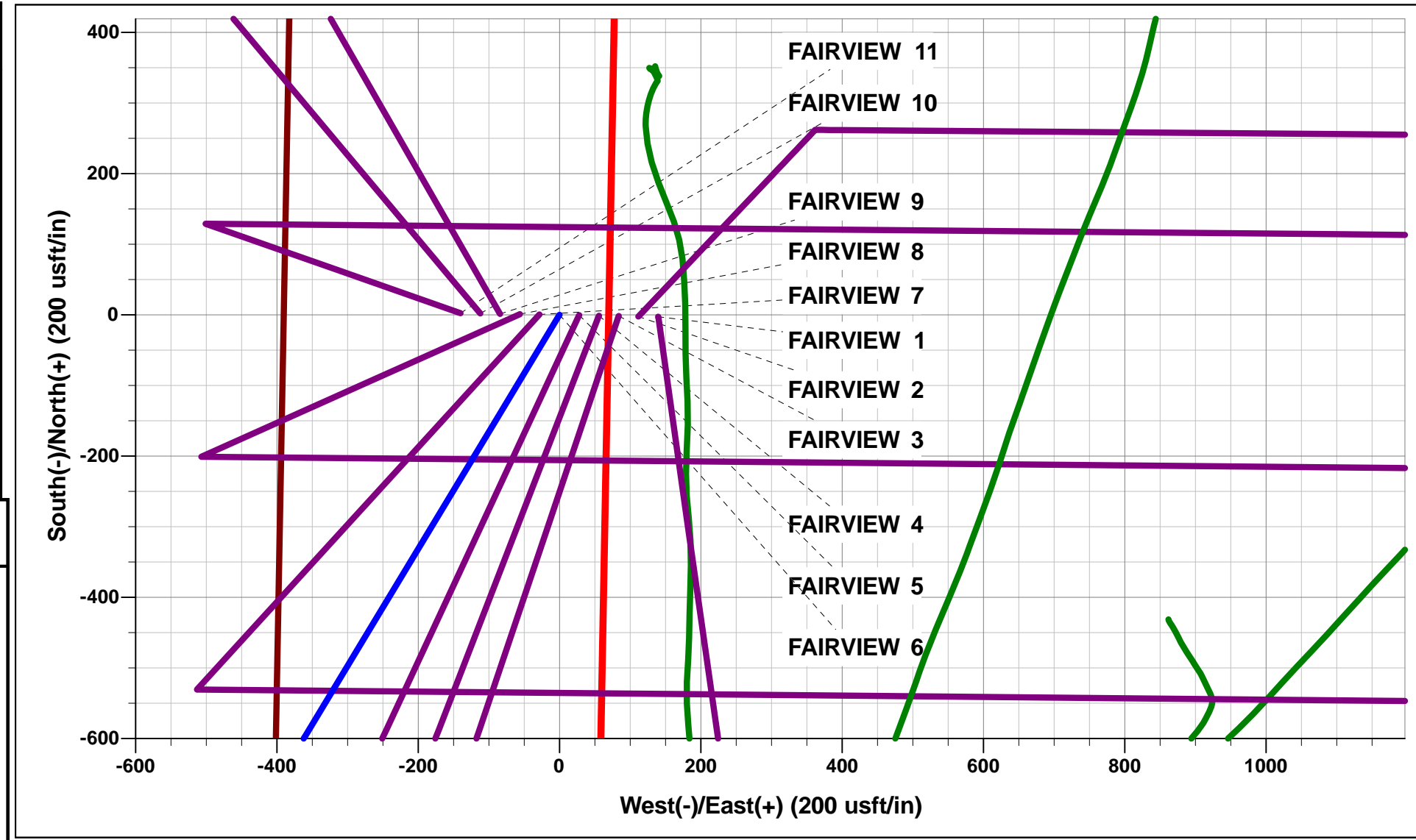




Project: WELD COUNTY, COLORADO (NAD 83)
Site: NW SW SEC. 5 T2N R68W 6th P.M.
Well: FAIRVIEW 6
Wellbore: ORIGINAL WELLBORE
Design: PROPOSAL #2

ANNOTATIONS										
TVD	MD	Inc	Azi	+N/-S	+E/-W	VSect	Dep	Annotation		
1450.0	1450.0	0.00	0.00	0.0	0.0	0.0	0.0	START NUDGE (2°/100ft BUR)		
2135.0	2141.7	13.83	211.11	-71.2	-42.9	-33.4	83.1	EOB TO 13.83° INC		
5542.0	5650.5	13.83	211.11	-789.5	-476.4	-370.0	922.0	END OF TANGENT		
6227.0	6342.2	0.00	0.00	-860.6	-519.3	-403.4	1005.1	EOD TO VERTICAL		
6257.0	6372.2	0.00	0.00	-860.6	-519.3	-403.4	1005.1	KOP (10°/100ft BUR)		
6830.0	7272.2	90.00	90.53	-865.9	53.6	165.4	1578.1	7" ICP - FAIRVIEW 6 (P2)		
6830.0	14349.1	90.00	90.54	-931.9	7130.2	7190.8	8655.0	BHL - FAIRVIEW 6 (P2)		

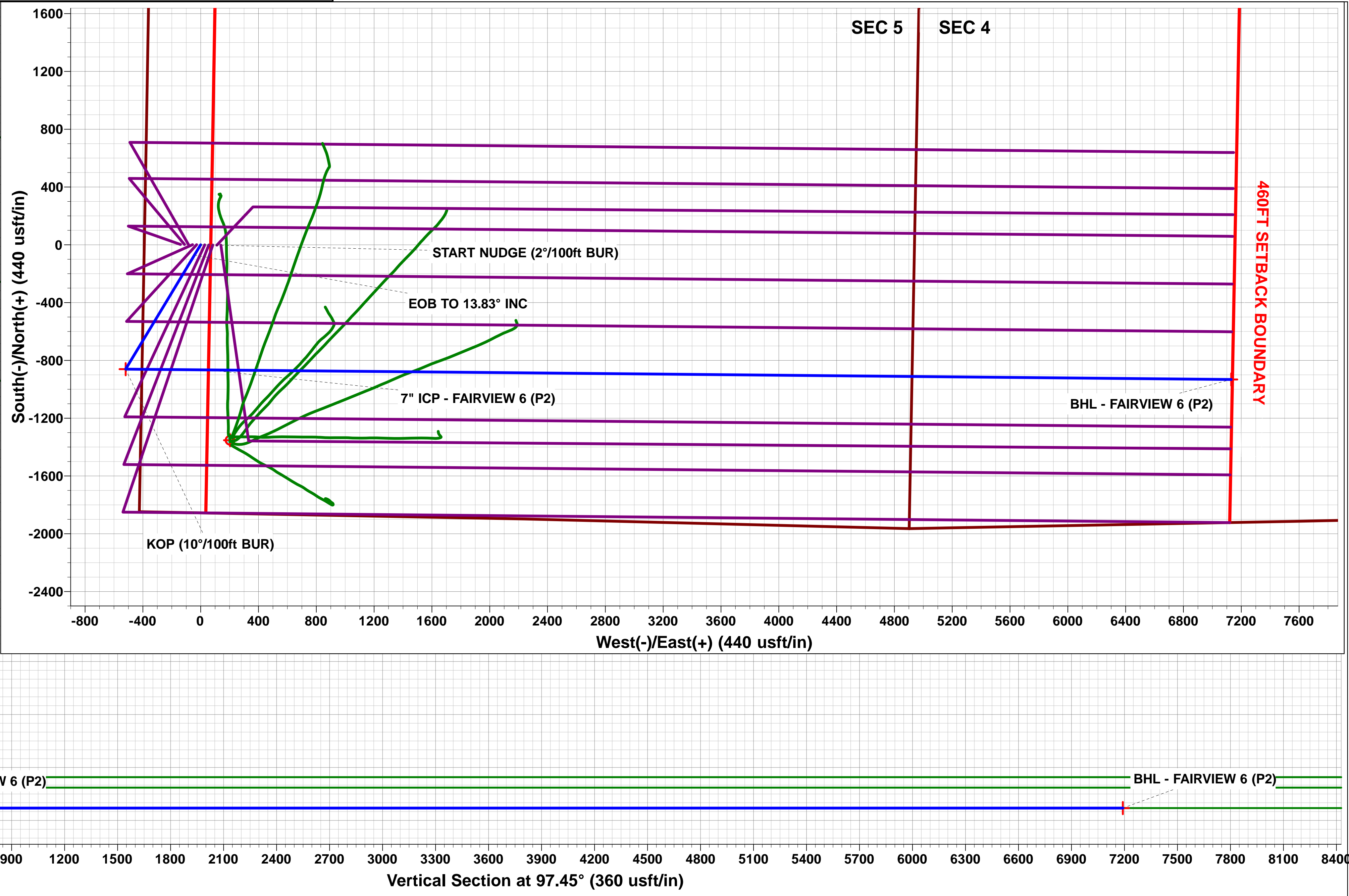
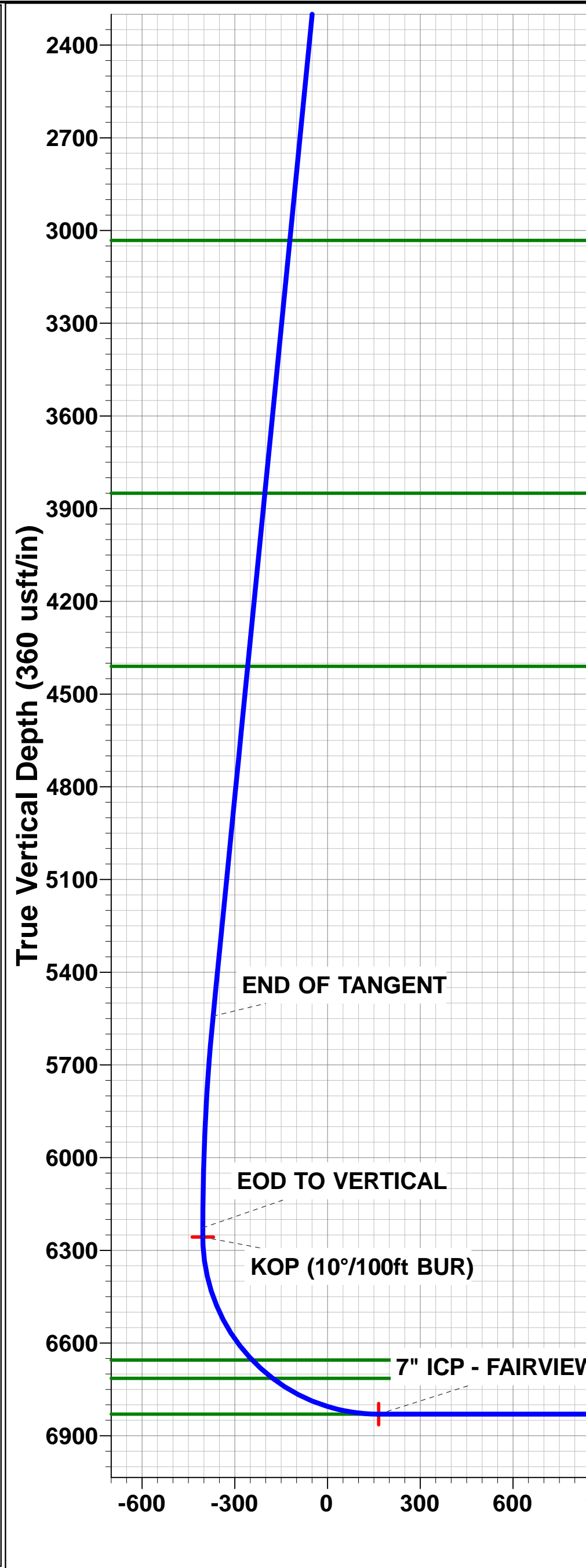
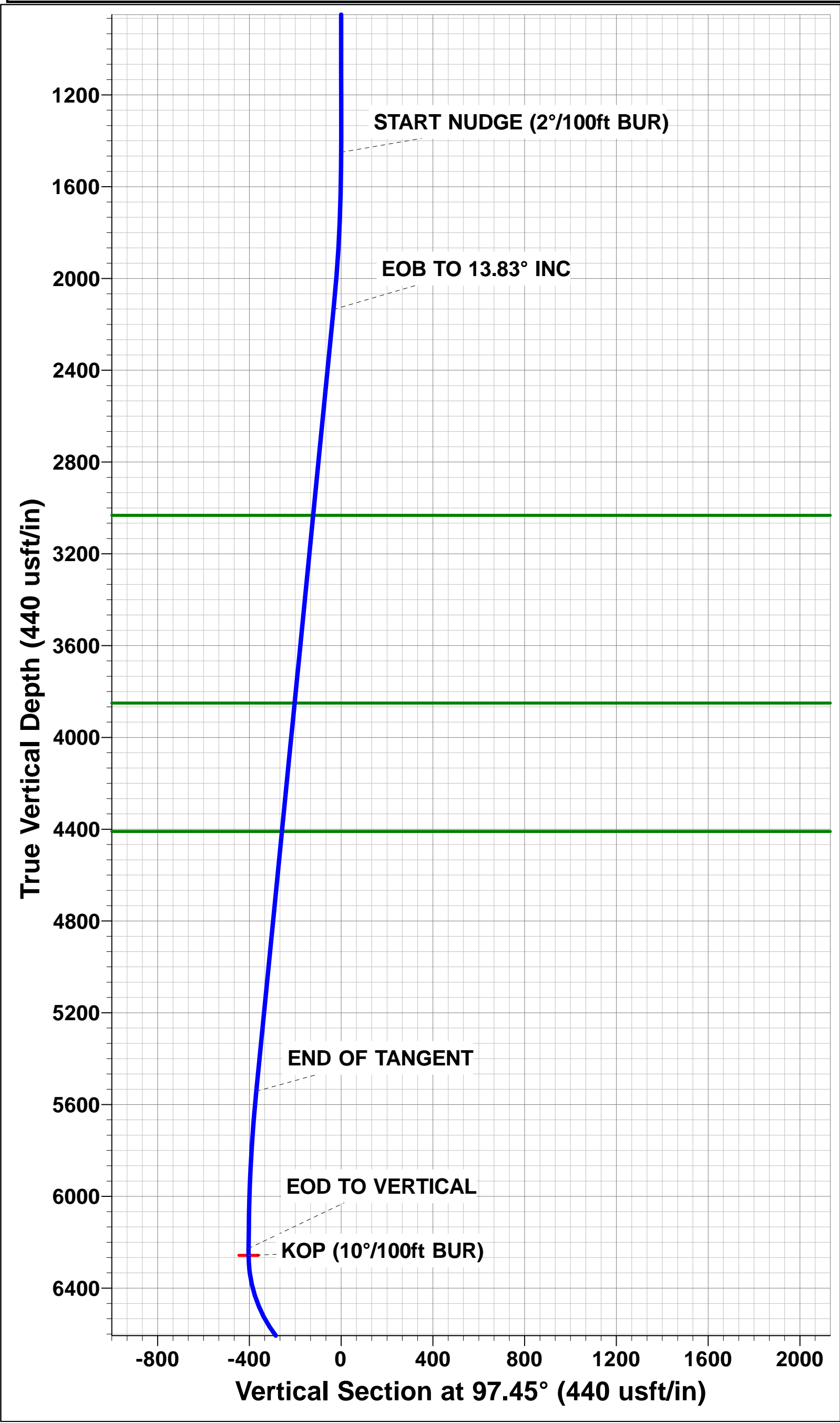
WELLBORE TARGET DETAILS (LAT/LONG)						
Name	TVD	+N/-S	+E/-W	Latitude	Longitude	
KOP - FAIRVIEW 6 (P2)	6257.0	-860.6	-519.3	40.163401	-105.037025	
7" ICP - FAIRVIEW 6 (P2)	6830.0	-865.9	53.7	40.163386	-105.034975	
BHL - FAIRVIEW 6 (P2)	6830.0	-931.9	7130.2	40.163202	-105.009656	



FORMATION TOP DETAILS		
TVDPath	MDPath	Formation
3032.0	3065.5	PARKMAN
3850.0	3907.9	SUSSEX
4410.0	4484.7	SHANNON
6655.0	6812.2	SHARON SPRINGS
6714.0	6901.2	NIOBRARA
6830.0	7272.2	NIO B TARGET

Azimuths to True North
Magnetic North: 8.54°

Magnetic Field
Strength: 52625.5snT
Dip Angle: 66.70°
Date: 22/10/2014
Model: IGRF2010



Planning Report



Database:	EDM 5000.1 Single User Db	Local Co-ordinate Reference:	Well FAIRVIEW 6
Company:	EXTRACTION OIL & GAS	TVD Reference:	KB-EST @ 4969.0usft (Original Well Elev)
Project:	WELD COUNTY, COLORADO (NAD 83)	MD Reference:	KB-EST @ 4969.0usft (Original Well Elev)
Site:	NW SW SEC. 5 T2N R68W 6th P.M.	North Reference:	True
Well:	FAIRVIEW 6	Survey Calculation Method:	Minimum Curvature
Wellbore:	ORIGINAL WELLBORE		
Design:	PROPOSAL #2		

Project	WELD COUNTY, COLORADO (NAD 83)		
Map System:	US State Plane 1983	System Datum:	Mean Sea Level
Geo Datum:	North American Datum 1983		
Map Zone:	Colorado Northern Zone		Using geodetic scale factor

Site		NW SW SEC. 5 T2N R68W 6th P.M.			
Site Position:		Northing:	1,303,569.20 usft	Latitude:	40.165756
From:	Lat/Long	Easting:	3,130,047.26 usft	Longitude:	-105.034667
Position Uncertainty:	0.0 usft	Slot Radius:	1.10000 ft	Grid Convergence:	0.30 °

Well	FAIRVIEW 6					
Well Position	+N/-S	2.5 usft	Northing:	1,303,571.01 usft	Latitude:	40.165763
	+E/-W	-139.7 usft	Easting:	3,129,907.51 usft	Longitude:	-105.035167
Position Uncertainty		0.0 usft	Wellhead Elevation:	usft	Ground Level:	4,945.0 usft

Wellbore	ORIGINAL WELLBORE				
Magnetics	Model Name	Sample Date	Declination (°)	Dip Angle (°)	Field Strength (nT)
	IGRF2010	22/10/2014	8.54	66.70	52,626

Design	PROPOSAL #2			
Audit Notes:				
Version:	Phase:	PROTOTYPE	Tie On Depth:	0.0
Vertical Section:	Depth From (TVD) (usft)	+N/-S (usft)	+E/-W (usft)	Direction (°)
	6,830.0	0.0	0.0	97.45

Plan Sections											
MD (usft)	Inc (°)	Azi (°)	Vertical Depth	SS (usft)	+N/-S (usft)	+E/-W (usft)	Dogleg Rate (°/100usf)	Build Rate (°/100usf)	Turn Rate (°/100usf)	TFO (°)	Target
0.0	0.00	0.00	0.0	-4,969.0	0.0	0.0	0.00	0.00	0.00	0.00	
1,450.0	0.00	0.00	1,450.0	-3,519.0	0.0	0.0	0.00	0.00	0.00	0.00	
2,141.7	13.83	211.11	2,135.0	-2,834.0	-71.1	-42.9	2.00	2.00	0.00	211.11	
5,650.5	13.83	211.11	5,542.0	573.0	-789.5	-476.4	0.00	0.00	0.00	0.00	
6,342.2	0.00	0.00	6,227.0	1,258.0	-860.6	-519.3	2.00	-2.00	0.00	180.00	
6,372.2	0.00	0.00	6,257.0	1,288.0	-860.6	-519.3	0.00	0.00	0.00	0.00	KOP - FAIRVIEW 6
7,272.2	90.00	90.53	6,830.0	1,861.0	-865.9	53.7	10.00	10.00	10.06	90.53	7" ICP - FAIRVIEW
14,349.1	90.00	90.54	6,830.0	1,861.0	-931.9	7,130.2	0.00	0.00	0.00	57.98	BHL - FAIRVIEW 6

Database:	EDM 5000.1 Single User Db	Local Co-ordinate Reference:	Well FAIRVIEW 6
Company:	EXTRACTION OIL & GAS	TVD Reference:	KB-EST @ 4969.0usft (Original Well Elev)
Project:	WELD COUNTY, COLORADO (NAD 83)	MD Reference:	KB-EST @ 4969.0usft (Original Well Elev)
Site:	NW SW SEC. 5 T2N R68W 6th P.M.	North Reference:	True
Well:	FAIRVIEW 6	Survey Calculation Method:	Minimum Curvature
Wellbore:	ORIGINAL WELLBORE		
Design:	PROPOSAL #2		

Planned Survey

MD (usft)	Inc (°)	Azi (°)	TVD (usft)	SS (usft)	+N/-S (usft)	+E/-W (usft)	Vertical Section (usft)	Dogleg Rate (°/100usft)	Build Rate (°/100usft)	Turn Rate (°/100usft)
0.0	0.00	0.00	0.0	4,969.00	0.0	0.0	0.0	0.00	0.00	0.00
100.0	0.00	0.00	100.0	4,869.00	0.0	0.0	0.0	0.00	0.00	0.00
200.0	0.00	0.00	200.0	4,769.00	0.0	0.0	0.0	0.00	0.00	0.00
300.0	0.00	0.00	300.0	4,669.00	0.0	0.0	0.0	0.00	0.00	0.00
400.0	0.00	0.00	400.0	4,569.00	0.0	0.0	0.0	0.00	0.00	0.00
500.0	0.00	0.00	500.0	4,469.00	0.0	0.0	0.0	0.00	0.00	0.00
600.0	0.00	0.00	600.0	4,369.00	0.0	0.0	0.0	0.00	0.00	0.00
700.0	0.00	0.00	700.0	4,269.00	0.0	0.0	0.0	0.00	0.00	0.00
800.0	0.00	0.00	800.0	4,169.00	0.0	0.0	0.0	0.00	0.00	0.00
900.0	0.00	0.00	900.0	4,069.00	0.0	0.0	0.0	0.00	0.00	0.00
1,000.0	0.00	0.00	1,000.0	3,969.00	0.0	0.0	0.0	0.00	0.00	0.00
1,100.0	0.00	0.00	1,100.0	3,869.00	0.0	0.0	0.0	0.00	0.00	0.00
1,200.0	0.00	0.00	1,200.0	3,769.00	0.0	0.0	0.0	0.00	0.00	0.00
1,300.0	0.00	0.00	1,300.0	3,669.00	0.0	0.0	0.0	0.00	0.00	0.00
1,400.0	0.00	0.00	1,400.0	3,569.00	0.0	0.0	0.0	0.00	0.00	0.00
START NUDGE (2°/100ft BUR)										
1,450.0	0.00	0.00	1,450.0	3,519.00	0.0	0.0	0.0	0.00	0.00	0.00
1,500.0	1.00	211.11	1,500.0	3,469.00	-0.4	-0.2	-0.2	2.00	2.00	0.00
1,600.0	3.00	211.11	1,599.9	3,369.07	-3.4	-2.0	-1.6	2.00	2.00	0.00
1,700.0	5.00	211.11	1,699.7	3,269.32	-9.3	-5.6	-4.4	2.00	2.00	0.00
1,800.0	7.00	211.11	1,799.1	3,169.87	-18.3	-11.0	-8.6	2.00	2.00	0.00
1,900.0	9.00	211.11	1,898.2	3,070.85	-30.2	-18.2	-14.2	2.00	2.00	0.00
2,000.0	11.00	211.11	1,996.6	2,972.37	-45.1	-27.2	-21.1	2.00	2.00	0.00
2,100.0	13.00	211.11	2,094.4	2,874.56	-62.9	-37.9	-29.5	2.00	2.00	0.00
EOB TO 13.83° INC										
2,141.7	13.83	211.11	2,135.0	2,834.00	-71.2	-42.9	-33.4	2.00	2.00	0.00
2,200.0	13.83	211.11	2,191.6	2,777.39	-83.1	-50.1	-38.9	0.00	0.00	0.00
2,300.0	13.83	211.11	2,288.7	2,680.29	-103.6	-62.5	-48.5	0.00	0.00	0.00
2,400.0	13.83	211.11	2,385.8	2,583.19	-124.0	-74.8	-58.1	0.00	0.00	0.00
2,500.0	13.83	211.11	2,482.9	2,486.09	-144.5	-87.2	-67.7	0.00	0.00	0.00
2,600.0	13.83	211.11	2,580.0	2,388.99	-165.0	-99.5	-77.3	0.00	0.00	0.00
2,700.0	13.83	211.11	2,677.1	2,291.89	-185.4	-111.9	-86.9	0.00	0.00	0.00
2,800.0	13.83	211.11	2,774.2	2,194.79	-205.9	-124.3	-96.5	0.00	0.00	0.00
2,900.0	13.83	211.11	2,871.3	2,097.70	-226.4	-136.6	-106.1	0.00	0.00	0.00
3,000.0	13.83	211.11	2,968.4	2,000.60	-246.9	-149.0	-115.7	0.00	0.00	0.00
PARKMAN										
3,065.5	13.83	211.11	3,032.0	1,937.00	-260.3	-157.0	-122.0	0.00	0.00	0.00
3,100.0	13.83	211.11	3,065.5	1,903.50	-267.3	-161.3	-125.3	0.00	0.00	0.00
3,200.0	13.83	211.11	3,162.6	1,806.40	-287.8	-173.7	-134.9	0.00	0.00	0.00
3,300.0	13.83	211.11	3,259.7	1,709.30	-308.3	-186.0	-144.5	0.00	0.00	0.00
3,400.0	13.83	211.11	3,356.8	1,612.20	-328.7	-198.4	-154.1	0.00	0.00	0.00
3,500.0	13.83	211.11	3,453.9	1,515.10	-349.2	-210.7	-163.7	0.00	0.00	0.00
3,600.0	13.83	211.11	3,551.0	1,418.00	-369.7	-223.1	-173.3	0.00	0.00	0.00
3,700.0	13.83	211.11	3,648.1	1,320.90	-390.2	-235.4	-182.9	0.00	0.00	0.00
3,800.0	13.83	211.11	3,745.2	1,223.80	-410.6	-247.8	-192.5	0.00	0.00	0.00
3,900.0	13.83	211.11	3,842.3	1,126.70	-431.1	-260.1	-202.1	0.00	0.00	0.00
SUSSEX										
3,907.9	13.83	211.11	3,850.0	1,119.00	-432.7	-261.1	-202.8	0.00	0.00	0.00
4,000.0	13.83	211.11	3,939.4	1,029.60	-451.6	-272.5	-211.7	0.00	0.00	0.00
4,100.0	13.83	211.11	4,036.5	932.50	-472.0	-284.8	-221.3	0.00	0.00	0.00
4,200.0	13.83	211.11	4,133.6	835.40	-492.5	-297.2	-230.9	0.00	0.00	0.00
4,300.0	13.83	211.11	4,230.7	738.30	-513.0	-309.5	-240.5	0.00	0.00	0.00
4,400.0	13.83	211.11	4,327.8	641.20	-533.5	-321.9	-250.0	0.00	0.00	0.00
SHANNON										

Database:	EDM 5000.1 Single User Db	Local Co-ordinate Reference:	Well FAIRVIEW 6
Company:	EXTRACTION OIL & GAS	TVD Reference:	KB-EST @ 4969.0usft (Original Well Elev)
Project:	WELD COUNTY, COLORADO (NAD 83)	MD Reference:	KB-EST @ 4969.0usft (Original Well Elev)
Site:	NW SW SEC. 5 T2N R68W 6th P.M.	North Reference:	True
Well:	FAIRVIEW 6	Survey Calculation Method:	Minimum Curvature
Wellbore:	ORIGINAL WELLBORE		
Design:	PROPOSAL #2		

Planned Survey

MD (usft)	Inc (°)	Azi (°)	TVD (usft)	SS (usft)	+N/-S (usft)	+E/-W (usft)	Vertical Section (usft)	Dogleg Rate (°/100usft)	Build Rate (°/100usft)	Turn Rate (°/100usft)
4,484.7	13.83	211.11	4,410.0	559.00	-550.8	-332.4	-258.2	0.00	0.00	0.00
4,500.0	13.83	211.11	4,424.9	544.10	-553.9	-334.3	-259.6	0.00	0.00	0.00
4,600.0	13.83	211.11	4,522.0	447.00	-574.4	-346.6	-269.2	0.00	0.00	0.00
4,700.0	13.83	211.11	4,619.1	349.90	-594.9	-359.0	-278.8	0.00	0.00	0.00
4,800.0	13.83	211.11	4,716.2	252.80	-615.3	-371.3	-288.4	0.00	0.00	0.00
4,900.0	13.83	211.11	4,813.3	155.70	-635.8	-383.7	-298.0	0.00	0.00	0.00
5,000.0	13.83	211.11	4,910.4	58.60	-656.3	-396.0	-307.6	0.00	0.00	0.00
5,100.0	13.83	211.11	5,007.5	-38.49	-676.8	-408.4	-317.2	0.00	0.00	0.00
5,200.0	13.83	211.11	5,104.6	-135.59	-697.2	-420.7	-326.8	0.00	0.00	0.00
5,300.0	13.83	211.11	5,201.7	-232.69	-717.7	-433.1	-336.4	0.00	0.00	0.00
5,400.0	13.83	211.11	5,298.8	-329.79	-738.2	-445.4	-346.0	0.00	0.00	0.00
5,500.0	13.83	211.11	5,395.9	-426.89	-758.6	-457.8	-355.6	0.00	0.00	0.00
5,600.0	13.83	211.11	5,493.0	-523.99	-779.1	-470.1	-365.2	0.00	0.00	0.00
END OF TANGENT										
5,650.5	13.83	211.11	5,542.0	-573.03	-789.5	-476.4	-370.0	0.00	0.00	0.00
5,700.0	12.84	211.11	5,590.2	-621.19	-799.2	-482.3	-374.6	2.00	-2.00	0.00
5,800.0	10.84	211.11	5,688.1	-719.06	-816.8	-492.9	-382.9	2.00	-2.00	0.00
5,900.0	8.84	211.11	5,786.6	-817.58	-831.4	-501.7	-389.7	2.00	-2.00	0.00
6,000.0	6.84	211.11	5,885.6	-916.64	-843.1	-508.8	-395.2	2.00	-2.00	0.00
6,100.0	4.84	211.11	5,985.1	-1,016.12	-851.8	-514.0	-399.3	2.00	-2.00	0.00
6,200.0	2.84	211.11	6,084.9	-1,115.89	-857.6	-517.5	-402.0	2.00	-2.00	0.00
6,300.0	0.84	211.11	6,184.8	-1,215.83	-860.3	-519.1	-403.3	2.00	-2.00	0.00
EOD TO VERTICAL										
6,342.2	0.00	0.00	6,227.0	-1,258.03	-860.6	-519.3	-403.4	2.00	-2.00	0.00
KOP (10°/100ft BUR)										
6,372.2	0.00	0.00	6,257.0	-1,288.03	-860.6	-519.3	-403.4	0.00	0.00	0.00
6,400.0	2.78	90.53	6,284.8	-1,315.82	-860.6	-518.6	-402.7	10.01	10.01	0.00
6,500.0	12.78	90.53	6,383.8	-1,414.77	-860.7	-505.1	-389.3	10.00	10.00	0.00
6,600.0	22.78	90.53	6,478.9	-1,509.87	-861.0	-474.6	-359.0	10.00	10.00	0.00
6,700.0	32.78	90.53	6,567.2	-1,598.23	-861.4	-428.1	-312.8	10.00	10.00	0.00
6,800.0	42.78	90.53	6,646.2	-1,677.17	-862.0	-366.9	-252.1	10.00	10.00	0.00
SHARON SPRINGS										
6,812.2	43.99	90.53	6,655.0	-1,686.00	-862.1	-358.5	-243.8	10.00	10.00	0.00
6,900.0	52.78	90.53	6,713.3	-1,744.28	-862.7	-292.9	-178.6	10.00	10.00	0.00
NIORARA										
6,901.2	52.90	90.53	6,714.0	-1,745.00	-862.7	-292.0	-177.7	10.00	10.00	0.00
7,000.0	62.78	90.53	6,766.5	-1,797.54	-863.5	-208.4	-94.8	10.00	10.00	0.00
7,100.0	72.78	90.53	6,804.3	-1,835.31	-864.3	-116.0	-3.0	10.00	10.00	0.00
7,200.0	82.78	90.53	6,825.5	-1,856.45	-865.3	-18.4	93.9	10.00	10.00	0.00
7" ICP - FAIRVIEW 6 (P2) - NIO B TARGET										
7,272.2	90.00	90.53	6,830.0	-1,861.00	-865.9	53.7	165.4	10.00	10.00	0.00
7,300.0	90.00	90.53	6,830.0	-1,861.00	-866.2	81.4	193.0	0.00	0.00	0.00
7,400.0	90.00	90.53	6,830.0	-1,861.00	-867.1	181.4	292.3	0.00	0.00	0.00
7,500.0	90.00	90.53	6,830.0	-1,861.00	-868.0	281.4	391.6	0.00	0.00	0.00
7,600.0	90.00	90.53	6,830.0	-1,861.01	-869.0	381.4	490.8	0.00	0.00	0.00
7,700.0	90.00	90.53	6,830.0	-1,861.01	-869.9	481.4	590.1	0.00	0.00	0.00
7,800.0	90.00	90.53	6,830.0	-1,861.01	-870.8	581.4	689.4	0.00	0.00	0.00
7,900.0	90.00	90.53	6,830.0	-1,861.01	-871.8	681.4	788.6	0.00	0.00	0.00
8,000.0	90.00	90.53	6,830.0	-1,861.01	-872.7	781.4	887.9	0.00	0.00	0.00
8,100.0	90.00	90.53	6,830.0	-1,861.02	-873.6	881.4	987.2	0.00	0.00	0.00
8,200.0	90.00	90.53	6,830.0	-1,861.02	-874.5	981.4	1,086.5	0.00	0.00	0.00
8,300.0	90.00	90.53	6,830.0	-1,861.02	-875.5	1,081.4	1,185.7	0.00	0.00	0.00
8,400.0	90.00	90.53	6,830.0	-1,861.02	-876.4	1,181.4	1,285.0	0.00	0.00	0.00

Planning Report



Database:	EDM 5000.1 Single User Db	Local Co-ordinate Reference:	Well FAIRVIEW 6
Company:	EXTRACTION OIL & GAS	TVD Reference:	KB-EST @ 4969.0usft (Original Well Elev)
Project:	WELD COUNTY, COLORADO (NAD 83)	MD Reference:	KB-EST @ 4969.0usft (Original Well Elev)
Site:	NW SW SEC. 5 T2N R68W 6th P.M.	North Reference:	True
Well:	FAIRVIEW 6	Survey Calculation Method:	Minimum Curvature
Wellbore:	ORIGINAL WELLBORE		
Design:	PROPOSAL #2		

Planned Survey										
MD (usft)	Inc (°)	Azi (°)	TVD (usft)	SS (usft)	+N/-S (usft)	+E/-W (usft)	Vertical Section (usft)	Dogleg Rate (°/100usft)	Build Rate (°/100usft)	Turn Rate (°/100usft)
8,500.0	90.00	90.53	6,830.0	-1,861.02	-877.3	1,281.4	1,384.3	0.00	0.00	0.00
8,600.0	90.00	90.53	6,830.0	-1,861.02	-878.3	1,381.4	1,483.6	0.00	0.00	0.00
8,700.0	90.00	90.53	6,830.0	-1,861.02	-879.2	1,481.4	1,582.8	0.00	0.00	0.00
8,800.0	90.00	90.53	6,830.0	-1,861.03	-880.1	1,581.4	1,682.1	0.00	0.00	0.00
8,900.0	90.00	90.53	6,830.0	-1,861.03	-881.1	1,681.4	1,781.4	0.00	0.00	0.00
9,000.0	90.00	90.53	6,830.0	-1,861.03	-882.0	1,781.4	1,880.6	0.00	0.00	0.00
9,100.0	90.00	90.53	6,830.0	-1,861.03	-882.9	1,881.4	1,979.9	0.00	0.00	0.00
9,200.0	90.00	90.53	6,830.0	-1,861.03	-883.9	1,981.4	2,079.2	0.00	0.00	0.00
9,300.0	90.00	90.53	6,830.0	-1,861.03	-884.8	2,081.3	2,178.5	0.00	0.00	0.00
9,400.0	90.00	90.53	6,830.0	-1,861.03	-885.7	2,181.3	2,277.7	0.00	0.00	0.00
9,500.0	90.00	90.53	6,830.0	-1,861.03	-886.6	2,281.3	2,377.0	0.00	0.00	0.00
9,600.0	90.00	90.53	6,830.0	-1,861.03	-887.6	2,381.3	2,476.3	0.00	0.00	0.00
9,700.0	90.00	90.53	6,830.0	-1,861.03	-888.5	2,481.3	2,575.6	0.00	0.00	0.00
9,800.0	90.00	90.53	6,830.0	-1,861.04	-889.4	2,581.3	2,674.8	0.00	0.00	0.00
9,900.0	90.00	90.53	6,830.0	-1,861.04	-890.4	2,681.3	2,774.1	0.00	0.00	0.00
10,000.0	90.00	90.53	6,830.0	-1,861.04	-891.3	2,781.3	2,873.4	0.00	0.00	0.00
10,100.0	90.00	90.53	6,830.0	-1,861.04	-892.2	2,881.3	2,972.6	0.00	0.00	0.00
10,200.0	90.00	90.53	6,830.0	-1,861.04	-893.2	2,981.3	3,071.9	0.00	0.00	0.00
10,300.0	90.00	90.53	6,830.0	-1,861.04	-894.1	3,081.3	3,171.2	0.00	0.00	0.00
10,400.0	90.00	90.53	6,830.0	-1,861.04	-895.0	3,181.3	3,270.5	0.00	0.00	0.00
10,500.0	90.00	90.53	6,830.0	-1,861.04	-896.0	3,281.3	3,369.7	0.00	0.00	0.00
10,600.0	90.00	90.53	6,830.0	-1,861.04	-896.9	3,381.3	3,469.0	0.00	0.00	0.00
10,700.0	90.00	90.53	6,830.0	-1,861.04	-897.8	3,481.3	3,568.3	0.00	0.00	0.00
10,800.0	90.00	90.53	6,830.0	-1,861.04	-898.8	3,581.3	3,667.6	0.00	0.00	0.00
10,900.0	90.00	90.53	6,830.0	-1,861.04	-899.7	3,681.3	3,766.8	0.00	0.00	0.00
11,000.0	90.00	90.53	6,830.0	-1,861.04	-900.6	3,781.3	3,866.1	0.00	0.00	0.00
11,100.0	90.00	90.53	6,830.0	-1,861.04	-901.6	3,881.3	3,965.4	0.00	0.00	0.00
11,200.0	90.00	90.53	6,830.0	-1,861.04	-902.5	3,981.3	4,064.7	0.00	0.00	0.00
11,300.0	90.00	90.53	6,830.0	-1,861.04	-903.4	4,081.3	4,163.9	0.00	0.00	0.00
11,400.0	90.00	90.53	6,830.0	-1,861.04	-904.4	4,181.3	4,263.2	0.00	0.00	0.00
11,500.0	90.00	90.53	6,830.0	-1,861.04	-905.3	4,281.3	4,362.5	0.00	0.00	0.00
11,600.0	90.00	90.53	6,830.0	-1,861.04	-906.2	4,381.2	4,461.7	0.00	0.00	0.00
11,700.0	90.00	90.53	6,830.0	-1,861.04	-907.2	4,481.2	4,561.0	0.00	0.00	0.00
11,800.0	90.00	90.53	6,830.0	-1,861.04	-908.1	4,581.2	4,660.3	0.00	0.00	0.00
11,900.0	90.00	90.54	6,830.0	-1,861.03	-909.0	4,681.2	4,759.6	0.00	0.00	0.00
12,000.0	90.00	90.54	6,830.0	-1,861.03	-910.0	4,781.2	4,858.8	0.00	0.00	0.00
12,100.0	90.00	90.54	6,830.0	-1,861.03	-910.9	4,881.2	4,958.1	0.00	0.00	0.00
12,200.0	90.00	90.54	6,830.0	-1,861.03	-911.8	4,981.2	5,057.4	0.00	0.00	0.00
12,300.0	90.00	90.54	6,830.0	-1,861.03	-912.8	5,081.2	5,156.7	0.00	0.00	0.00
12,400.0	90.00	90.54	6,830.0	-1,861.03	-913.7	5,181.2	5,255.9	0.00	0.00	0.00
12,500.0	90.00	90.54	6,830.0	-1,861.03	-914.6	5,281.2	5,355.2	0.00	0.00	0.00
12,600.0	90.00	90.54	6,830.0	-1,861.03	-915.6	5,381.2	5,454.5	0.00	0.00	0.00
12,700.0	90.00	90.54	6,830.0	-1,861.03	-916.5	5,481.2	5,553.8	0.00	0.00	0.00
12,800.0	90.00	90.54	6,830.0	-1,861.03	-917.4	5,581.2	5,653.0	0.00	0.00	0.00
12,900.0	90.00	90.54	6,830.0	-1,861.02	-918.4	5,681.2	5,752.3	0.00	0.00	0.00
13,000.0	90.00	90.54	6,830.0	-1,861.02	-919.3	5,781.2	5,851.6	0.00	0.00	0.00
13,100.0	90.00	90.54	6,830.0	-1,861.02	-920.2	5,881.2	5,950.8	0.00	0.00	0.00
13,200.0	90.00	90.54	6,830.0	-1,861.02	-921.2	5,981.2	6,050.1	0.00	0.00	0.00
13,300.0	90.00	90.54	6,830.0	-1,861.02	-922.1	6,081.2	6,149.4	0.00	0.00	0.00
13,400.0	90.00	90.54	6,830.0	-1,861.02	-923.0	6,181.2	6,248.7	0.00	0.00	0.00
13,500.0	90.00	90.54	6,830.0	-1,861.02	-924.0	6,281.2	6,347.9	0.00	0.00	0.00
13,600.0	90.00	90.54	6,830.0	-1,861.01	-924.9	6,381.2	6,447.2	0.00	0.00	0.00
13,700.0	90.00	90.54	6,830.0	-1,861.01	-925.9	6,481.2	6,546.5	0.00	0.00	0.00
13,800.0	90.00	90.54	6,830.0	-1,861.01	-926.8	6,581.2	6,645.8	0.00	0.00	0.00

Database:	EDM 5000.1 Single User Db	Local Co-ordinate Reference:	Well FAIRVIEW 6
Company:	EXTRACTION OIL & GAS	TVD Reference:	KB-EST @ 4969.0usft (Original Well Elev)
Project:	WELD COUNTY, COLORADO (NAD 83)	MD Reference:	KB-EST @ 4969.0usft (Original Well Elev)
Site:	NW SW SEC. 5 T2N R68W 6th P.M.	North Reference:	True
Well:	FAIRVIEW 6	Survey Calculation Method:	Minimum Curvature
Wellbore:	ORIGINAL WELLBORE		
Design:	PROPOSAL #2		

Planned Survey										
MD (usft)	Inc (°)	Azi (°)	TVD (usft)	SS (usft)	+N/-S (usft)	+E/-W (usft)	Vertical Section (usft)	Dogleg Rate (°/100usft)	Build Rate (°/100usft)	Turn Rate (°/100usft)
13,900.0	90.00	90.54	6,830.0	-1,861.01	-927.7	6,681.1	6,745.0	0.00	0.00	0.00
14,000.0	90.00	90.54	6,830.0	-1,861.01	-928.7	6,781.1	6,844.3	0.00	0.00	0.00
14,100.0	90.00	90.54	6,830.0	-1,861.01	-929.6	6,881.1	6,943.6	0.00	0.00	0.00
14,200.0	90.00	90.54	6,830.0	-1,861.00	-930.5	6,981.1	7,042.9	0.00	0.00	0.00
14,300.0	90.00	90.54	6,830.0	-1,861.00	-931.5	7,081.1	7,142.1	0.00	0.00	0.00
BHL - FAIRVIEW 6 (P2)										
14,349.1	90.00	90.54	6,830.0	-1,861.00	-931.9	7,130.2	7,190.8	0.00	0.00	0.00

Formations						
MD (usft)	TVD (usft)	Name	Lithology	Dip (°)	Dip Direction (°)	
3,065.5	3,032.0	PARKMAN		0.00		
3,907.9	3,850.0	SUSSEX		0.00		
4,484.7	4,410.0	SHANNON		0.00		
6,812.2	6,655.0	SHARON SPRINGS		0.00		
6,901.2	6,714.0	NIOBRARA		0.00		
7,272.2	6,830.0	NIO B TARGET		0.00		

Plan Annotations				
MD (usft)	TVD (usft)	Local Coordinates		Comment
		+N/-S (usft)	+E/-W (usft)	
1,450.0	1,450.0	0.0	0.0	START NUDGE (2°/100ft BUR)
2,141.7	2,135.0	-71.2	-42.9	EOB TO 13.83° INC
5,650.5	5,542.0	-789.5	-476.4	END OF TANGENT
6,342.2	6,227.0	-860.6	-519.3	EOD TO VERTICAL
6,372.2	6,257.0	-860.6	-519.3	KOP (10°/100ft BUR)
7,272.2	6,830.0	-865.9	53.6	7" ICP - FAIRVIEW 6 (P2)
14,349.1	6,830.0	-931.9	7,130.2	BHL - FAIRVIEW 6 (P2)