

EXTRACTION OIL & GAS

WELD COUNTY, COLORADO (NAD 83)

NW SW SEC. 5 T2N R68W 6th P.M.

FAIRVIEW 8

ORIGINAL WELLBORE

09 November, 2014

Plan: PROPOSAL #2

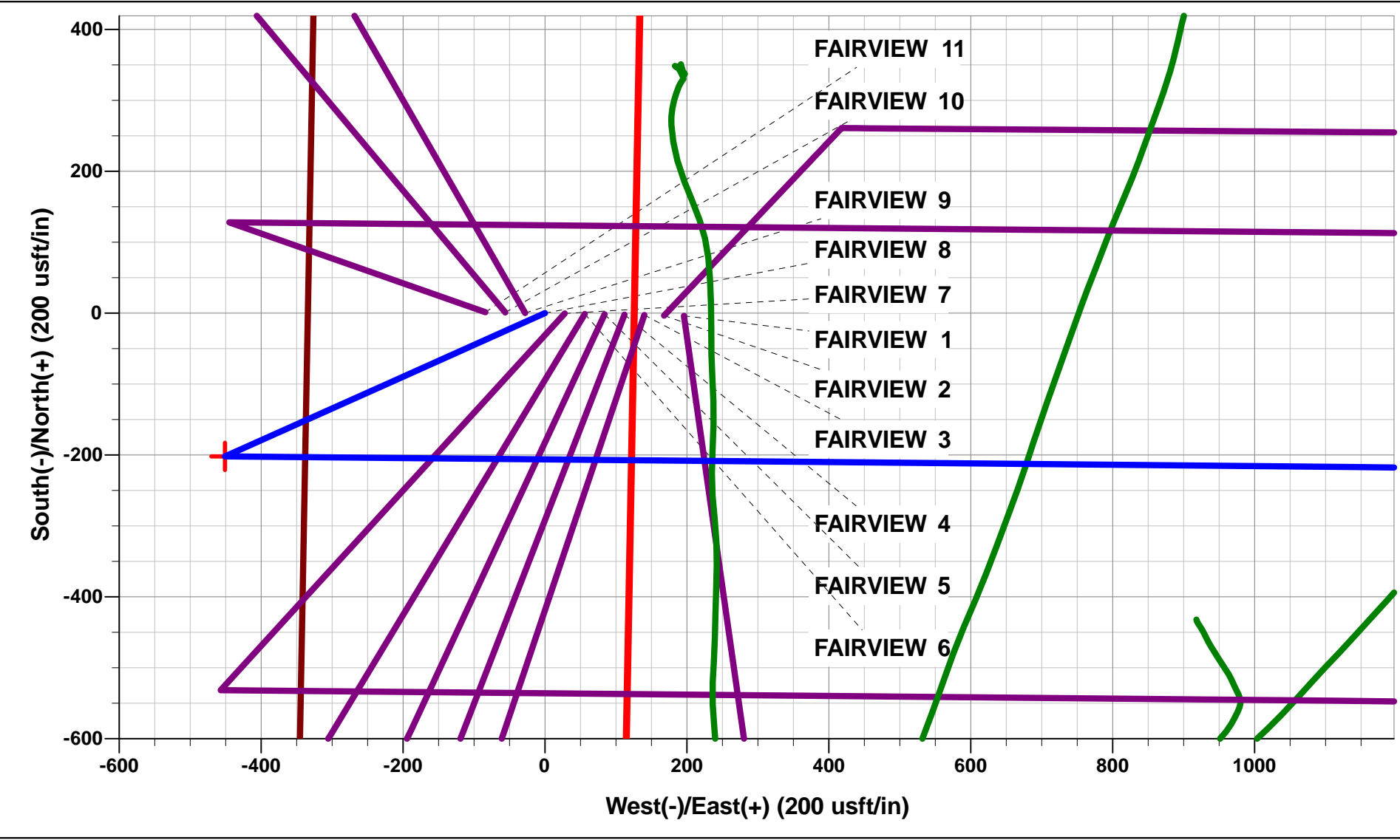




Project: WELD COUNTY, COLORADO (NAD 83)
Site: NW SW SEC. 5 T2N R68W 6th P.M.
Well: FAIRVIEW 8
Wellbore: ORIGINAL WELLBORE
Design: PROPOSAL #2

ANNOTATIONS										
TVD	MD	Inc	Azi	+N/-S	+E/-W	VSect	Dep	Annotation		
1250.0	1250.0	0.00	0.00	0.0	0.0	0.0	0.0	START NUDGE (2°/100ft BUR)		
1551.0	1551.6	6.03	245.87	-6.5	-14.5	-14.2	15.9	EOB TO 6.03° INC		
5926.0	5950.9	6.03	245.87	-195.4	-436.3	-428.6	478.1	END OF TANGENT		
6227.0	6252.5	0.00	0.00	-201.9	-450.8	-442.8	494.0	EOD TO VERTICAL		
6257.0	6282.5	0.00	0.00	-201.9	-450.8	-442.8	494.0	KOP (10°/100ft BUR)		
6830.0	7182.5	90.00	90.54	-207.3	122.1	129.9	1066.9	7" ICP - FAIRVIEW 8 (P2)		
6830.0	14254.1	90.00	90.53	-272.9	7193.4	7198.6	8138.5	BHL - FAIRVIEW 8 (P2)		

WELLBORE TARGET DETAILS (LAT/LONG)					
Name	TVD	+N/-S	+E/-W	Latitude	Longitude
KOP - FAIRVIEW 8 (P2)	6257.0	-201.9	-450.8	40.165212	-105.036981
7" ICP - FAIRVIEW 8 (P2)	6830.0	-207.3	122.1	40.165197	-105.034931
BHL - FAIRVIEW 8 (P2)	6830.0	-272.9	7193.4	40.165014	-105.009630



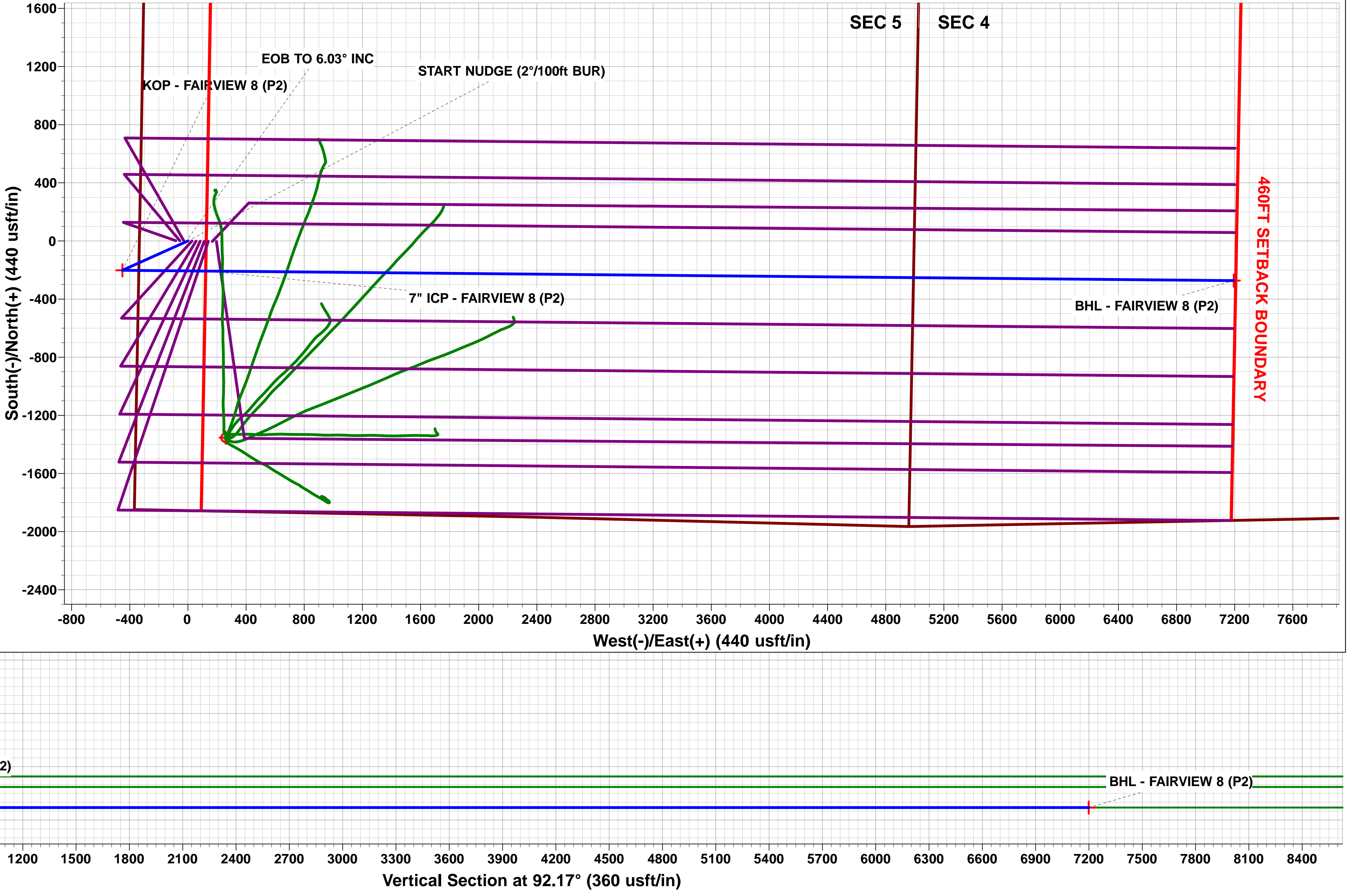
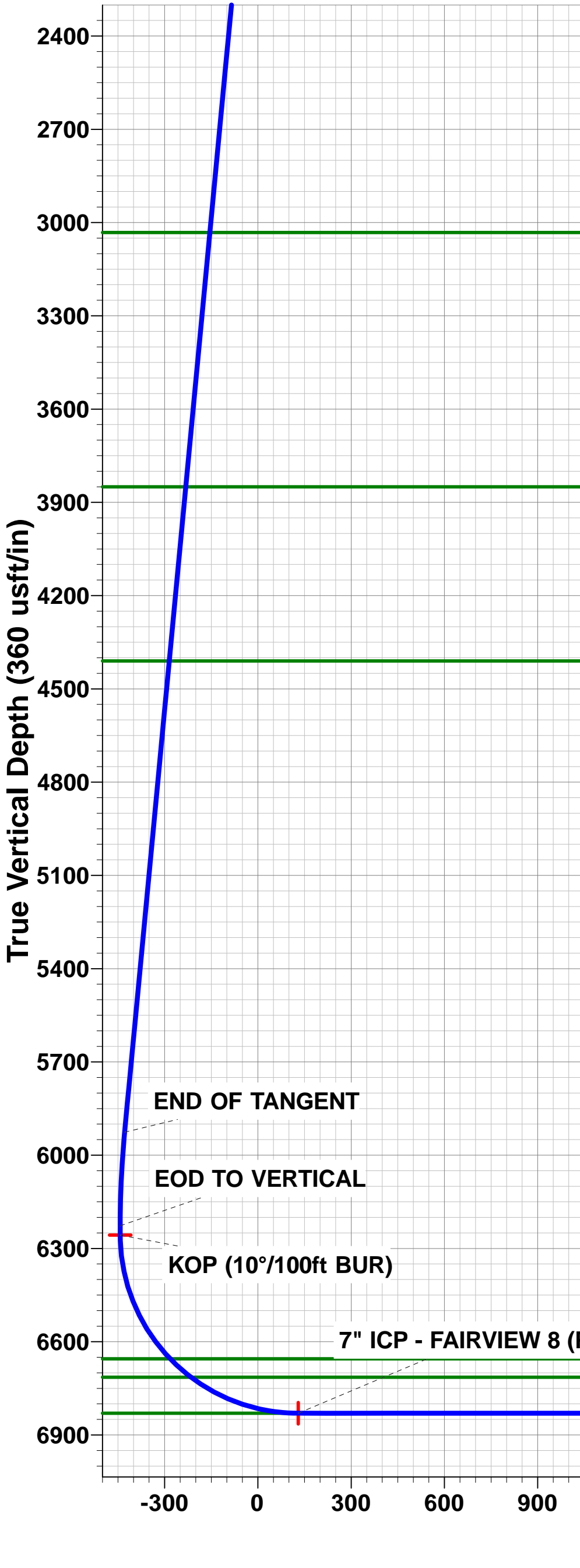
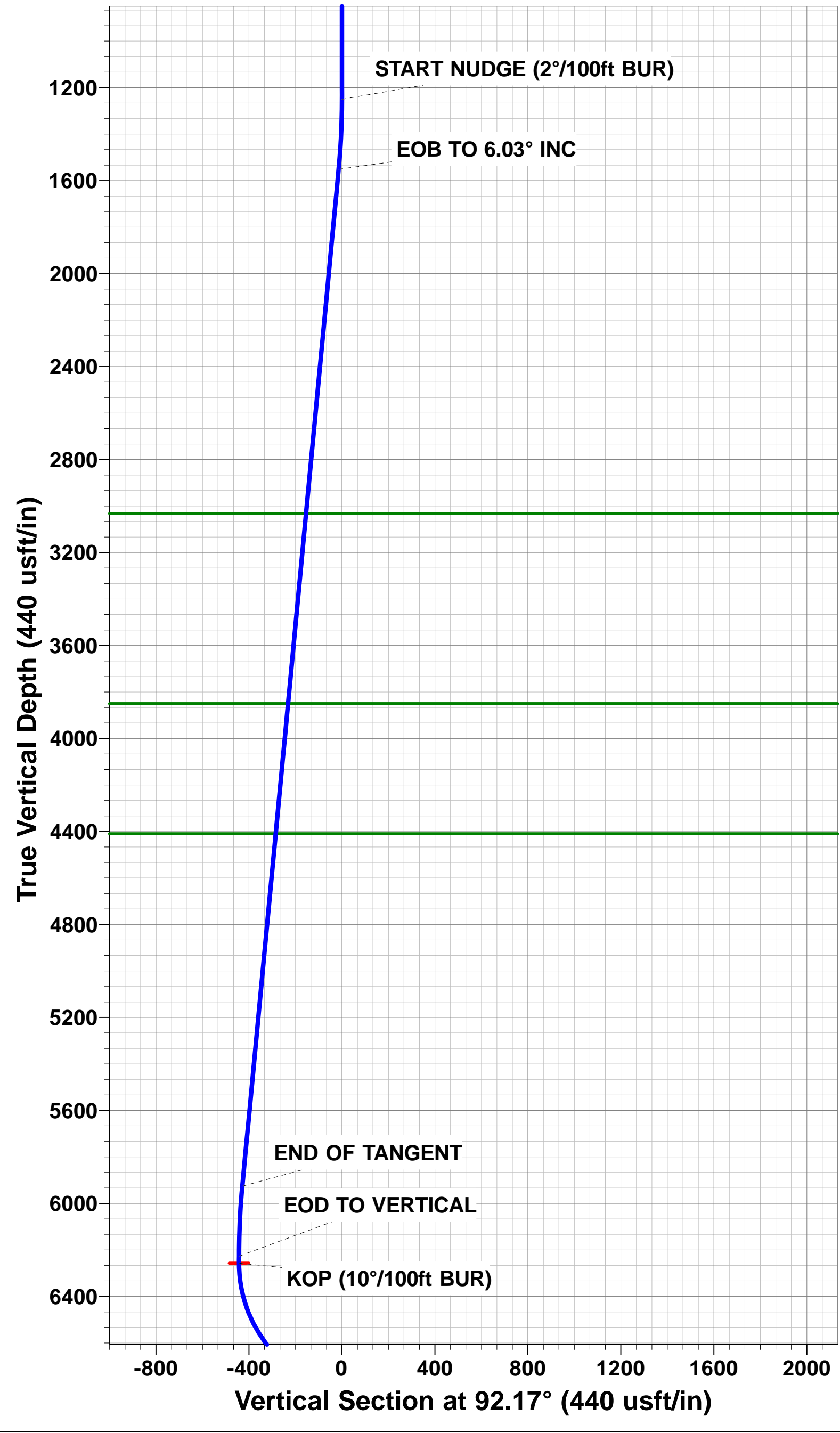
FORMATION TOP DETAILS		
TVDPath	MDPath	Formation
3032.0	3040.8	PARKMAN
3850.0	3863.4	SUSSEX
4410.0	4426.5	SHANNON
6655.0	6722.4	SHARON SPRINGS
6714.0	6811.5	NIOBRARA
6830.0	7182.5	NIO B TARGET

T

M

Azimuths to True North
Magnetic North: 8.54°

Magnetic Field
Strength: 52625.5snT
Dip Angle: 66.70°
Date: 22/10/2014
Model: IGRF2010



Planning Report



Database:	EDM 5000.1 Single User Db	Local Co-ordinate Reference:	Well FAIRVIEW 8
Company:	EXTRACTION OIL & GAS	TVD Reference:	KB-EST @ 4971.0usft (Original Well Elev)
Project:	WELD COUNTY, COLORADO (NAD 83)	MD Reference:	KB-EST @ 4971.0usft (Original Well Elev)
Site:	NW SW SEC. 5 T2N R68W 6th P.M.	North Reference:	True
Well:	FAIRVIEW 8	Survey Calculation Method:	Minimum Curvature
Wellbore:	ORIGINAL WELLBORE		
Design:	PROPOSAL #2		

Project	WELD COUNTY, COLORADO (NAD 83)		
Map System:	US State Plane 1983	System Datum:	Mean Sea Level
Geo Datum:	North American Datum 1983		
Map Zone:	Colorado Northern Zone		Using geodetic scale factor

Site	NW SW SEC. 5 T2N R68W 6th P.M.		
Site Position:		Northing:	1,303,569.20 usft
From:	Lat/Long	Easting:	3,130,047.26 usft
Position Uncertainty:	0.0 usft	Slot Radius:	1.10000 ft
		Latitude:	40.165756
		Longitude:	-105.034667
		Grid Convergence:	0.30 °

Well	FAIRVIEW 8		
Well Position	+N/-S	3.6 usft	Northing:
	+E/-W	-195.9 usft	Easting:
Position Uncertainty	0.0 usft		Wellhead Elevation:
			Latitude:
			Longitude:
			Ground Level:

Wellbore	ORIGINAL WELLBORE				
Magnetics	Model Name	Sample Date	Declination (°)	Dip Angle (°)	Field Strength (nT)
	IGRF2010	22/10/2014	8.54	66.70	52,625

Design	PROPOSAL #2			
Audit Notes:				
Version:	Phase:	PROTOTYPE	Tie On Depth:	0.0
Vertical Section:	Depth From (TVD) (usft)	+N/-S (usft)	+E/-W (usft)	Direction (°)
	6,830.0	0.0	0.0	92.17

Plan Sections											
MD (usft)	Inc (°)	Azi (°)	Vertical Depth	SS (usft)	+N/-S (usft)	+E/-W (usft)	Dogleg Rate (°/100usf)	Build Rate (°/100usf)	Turn Rate (°/100usf)	TFO (°)	Target
0.0	0.00	0.00	0.0	-4,971.0	0.0	0.0	0.00	0.00	0.00	0.00	
1,250.0	0.00	0.00	1,250.0	-3,721.0	0.0	0.0	0.00	0.00	0.00	0.00	
1,551.6	6.03	245.87	1,551.0	-3,420.0	-6.5	-14.5	2.00	2.00	0.00	245.87	
5,950.9	6.03	245.87	5,926.0	955.0	-195.4	-436.3	0.00	0.00	0.00	0.00	
6,252.5	0.00	0.00	6,227.0	1,256.0	-201.9	-450.8	2.00	-2.00	0.00	180.00	
6,282.5	0.00	0.00	6,257.0	1,286.0	-201.9	-450.8	0.00	0.00	0.00	0.00	KOP - FAIRVIEW 8
7,182.5	90.00	90.54	6,830.0	1,859.0	-207.3	122.1	10.00	10.00	10.06	90.54	7" ICP - FAIRVIEW
14,254.1	90.00	90.53	6,830.0	1,859.0	-272.9	7,193.4	0.00	0.00	0.00	-65.35	BHL - FAIRVIEW 8

Database:	EDM 5000.1 Single User Db	Local Co-ordinate Reference:	Well FAIRVIEW 8
Company:	EXTRACTION OIL & GAS	TVD Reference:	KB-EST @ 4971.0usft (Original Well Elev)
Project:	WELD COUNTY, COLORADO (NAD 83)	MD Reference:	KB-EST @ 4971.0usft (Original Well Elev)
Site:	NW SW SEC. 5 T2N R68W 6th P.M.	North Reference:	True
Well:	FAIRVIEW 8	Survey Calculation Method:	Minimum Curvature
Wellbore:	ORIGINAL WELLBORE		
Design:	PROPOSAL #2		

Planned Survey

MD (usft)	Inc (°)	Azi (°)	TVD (usft)	SS (usft)	+N/-S (usft)	+E/-W (usft)	Vertical Section (usft)	Dogleg Rate (°/100usft)	Build Rate (°/100usft)	Turn Rate (°/100usft)
0.0	0.00	0.00	0.0	4,971.00	0.0	0.0	0.0	0.00	0.00	0.00
100.0	0.00	0.00	100.0	4,871.00	0.0	0.0	0.0	0.00	0.00	0.00
200.0	0.00	0.00	200.0	4,771.00	0.0	0.0	0.0	0.00	0.00	0.00
300.0	0.00	0.00	300.0	4,671.00	0.0	0.0	0.0	0.00	0.00	0.00
400.0	0.00	0.00	400.0	4,571.00	0.0	0.0	0.0	0.00	0.00	0.00
500.0	0.00	0.00	500.0	4,471.00	0.0	0.0	0.0	0.00	0.00	0.00
600.0	0.00	0.00	600.0	4,371.00	0.0	0.0	0.0	0.00	0.00	0.00
700.0	0.00	0.00	700.0	4,271.00	0.0	0.0	0.0	0.00	0.00	0.00
800.0	0.00	0.00	800.0	4,171.00	0.0	0.0	0.0	0.00	0.00	0.00
900.0	0.00	0.00	900.0	4,071.00	0.0	0.0	0.0	0.00	0.00	0.00
1,000.0	0.00	0.00	1,000.0	3,971.00	0.0	0.0	0.0	0.00	0.00	0.00
1,100.0	0.00	0.00	1,100.0	3,871.00	0.0	0.0	0.0	0.00	0.00	0.00
1,200.0	0.00	0.00	1,200.0	3,771.00	0.0	0.0	0.0	0.00	0.00	0.00
START NUDGE (2°/100ft BUR)										
1,250.0	0.00	0.00	1,250.0	3,721.00	0.0	0.0	0.0	0.00	0.00	0.00
1,300.0	1.00	245.87	1,300.0	3,671.00	-0.2	-0.4	-0.4	2.00	2.00	0.00
1,400.0	3.00	245.87	1,399.9	3,571.07	-1.6	-3.6	-3.5	2.00	2.00	0.00
1,500.0	5.00	245.87	1,499.7	3,471.32	-4.5	-9.9	-9.8	2.00	2.00	0.00
EOB TO 6.03° INC										
1,551.6	6.03	245.87	1,551.0	3,419.96	-6.5	-14.5	-14.2	2.00	2.00	0.00
1,600.0	6.03	245.87	1,599.2	3,371.82	-8.6	-19.1	-18.8	0.00	0.00	0.00
1,700.0	6.03	245.87	1,698.6	3,272.38	-12.9	-28.7	-28.2	0.00	0.00	0.00
1,800.0	6.03	245.87	1,798.1	3,172.93	-17.2	-38.3	-37.6	0.00	0.00	0.00
1,900.0	6.03	245.87	1,897.5	3,073.49	-21.4	-47.9	-47.0	0.00	0.00	0.00
2,000.0	6.03	245.87	1,997.0	2,974.04	-25.7	-57.5	-56.5	0.00	0.00	0.00
2,100.0	6.03	245.87	2,096.4	2,874.59	-30.0	-67.1	-65.9	0.00	0.00	0.00
2,200.0	6.03	245.87	2,195.9	2,775.15	-34.3	-76.7	-75.3	0.00	0.00	0.00
2,300.0	6.03	245.87	2,295.3	2,675.70	-38.6	-86.2	-84.7	0.00	0.00	0.00
2,400.0	6.03	245.87	2,394.7	2,576.25	-42.9	-95.8	-94.1	0.00	0.00	0.00
2,500.0	6.03	245.87	2,494.2	2,476.81	-47.2	-105.4	-103.6	0.00	0.00	0.00
2,600.0	6.03	245.87	2,593.6	2,377.36	-51.5	-115.0	-113.0	0.00	0.00	0.00
2,700.0	6.03	245.87	2,693.1	2,277.91	-55.8	-124.6	-122.4	0.00	0.00	0.00
2,800.0	6.03	245.87	2,792.5	2,178.47	-60.1	-134.2	-131.8	0.00	0.00	0.00
2,900.0	6.03	245.87	2,892.0	2,079.02	-64.4	-143.8	-141.2	0.00	0.00	0.00
3,000.0	6.03	245.87	2,991.4	1,979.57	-68.7	-153.4	-150.7	0.00	0.00	0.00
PARKMAN										
3,040.8	6.03	245.87	3,032.0	1,939.00	-70.4	-157.3	-154.5	0.00	0.00	0.00
3,100.0	6.03	245.87	3,090.9	1,880.13	-73.0	-163.0	-160.1	0.00	0.00	0.00
3,200.0	6.03	245.87	3,190.3	1,780.68	-77.3	-172.5	-169.5	0.00	0.00	0.00
3,300.0	6.03	245.87	3,289.8	1,681.23	-81.6	-182.1	-178.9	0.00	0.00	0.00
3,400.0	6.03	245.87	3,389.2	1,581.79	-85.9	-191.7	-188.3	0.00	0.00	0.00
3,500.0	6.03	245.87	3,488.7	1,482.34	-90.2	-201.3	-197.8	0.00	0.00	0.00
3,600.0	6.03	245.87	3,588.1	1,382.90	-94.5	-210.9	-207.2	0.00	0.00	0.00
3,700.0	6.03	245.87	3,687.6	1,283.45	-98.7	-220.5	-216.6	0.00	0.00	0.00
3,800.0	6.03	245.87	3,787.0	1,184.00	-103.0	-230.1	-226.0	0.00	0.00	0.00
SUSSEX										
3,863.4	6.03	245.87	3,850.0	1,121.00	-105.8	-236.2	-232.0	0.00	0.00	0.00
3,900.0	6.03	245.87	3,886.4	1,084.56	-107.3	-239.7	-235.4	0.00	0.00	0.00
4,000.0	6.03	245.87	3,985.9	985.11	-111.6	-249.3	-244.8	0.00	0.00	0.00
4,100.0	6.03	245.87	4,085.3	885.66	-115.9	-258.9	-254.3	0.00	0.00	0.00
4,200.0	6.03	245.87	4,184.8	786.22	-120.2	-268.4	-263.7	0.00	0.00	0.00
4,300.0	6.03	245.87	4,284.2	686.77	-124.5	-278.0	-273.1	0.00	0.00	0.00
4,400.0	6.03	245.87	4,383.7	587.32	-128.8	-287.6	-282.5	0.00	0.00	0.00
SHANNON										

Planning Report



Database:	EDM 5000.1 Single User Db	Local Co-ordinate Reference:	Well FAIRVIEW 8
Company:	EXTRACTION OIL & GAS	TVD Reference:	KB-EST @ 4971.0usft (Original Well Elev)
Project:	WELD COUNTY, COLORADO (NAD 83)	MD Reference:	KB-EST @ 4971.0usft (Original Well Elev)
Site:	NW SW SEC. 5 T2N R68W 6th P.M.	North Reference:	True
Well:	FAIRVIEW 8	Survey Calculation Method:	Minimum Curvature
Wellbore:	ORIGINAL WELLBORE		
Design:	PROPOSAL #2		

Planned Survey

MD (usft)	Inc (°)	Azi (°)	TVD (usft)	SS (usft)	+N/-S (usft)	+E/-W (usft)	Vertical Section (usft)	Dogleg Rate (°/100usft)	Build Rate (°/100usft)	Turn Rate (°/100usft)
4,426.5	6.03	245.87	4,410.0	561.00	-129.9	-290.2	-285.0	0.00	0.00	0.00
4,500.0	6.03	245.87	4,483.1	487.88	-133.1	-297.2	-291.9	0.00	0.00	0.00
4,600.0	6.03	245.87	4,582.6	388.43	-137.4	-306.8	-301.4	0.00	0.00	0.00
4,700.0	6.03	245.87	4,682.0	288.98	-141.7	-316.4	-310.8	0.00	0.00	0.00
4,800.0	6.03	245.87	4,781.5	189.54	-146.0	-326.0	-320.2	0.00	0.00	0.00
4,900.0	6.03	245.87	4,880.9	90.09	-150.3	-335.6	-329.6	0.00	0.00	0.00
5,000.0	6.03	245.87	4,980.4	-9.36	-154.6	-345.2	-339.0	0.00	0.00	0.00
5,100.0	6.03	245.87	5,079.8	-108.80	-158.9	-354.7	-348.5	0.00	0.00	0.00
5,200.0	6.03	245.87	5,179.2	-208.25	-163.2	-364.3	-357.9	0.00	0.00	0.00
5,300.0	6.03	245.87	5,278.7	-307.69	-167.5	-373.9	-367.3	0.00	0.00	0.00
5,400.0	6.03	245.87	5,378.1	-407.14	-171.8	-383.5	-376.7	0.00	0.00	0.00
5,500.0	6.03	245.87	5,477.6	-506.59	-176.1	-393.1	-386.1	0.00	0.00	0.00
5,600.0	6.03	245.87	5,577.0	-606.03	-180.3	-402.7	-395.6	0.00	0.00	0.00
5,700.0	6.03	245.87	5,676.5	-705.48	-184.6	-412.3	-405.0	0.00	0.00	0.00
5,800.0	6.03	245.87	5,775.9	-804.93	-188.9	-421.9	-414.4	0.00	0.00	0.00
5,900.0	6.03	245.87	5,875.4	-904.37	-193.2	-431.5	-423.8	0.00	0.00	0.00
END OF TANGENT										
5,950.9	6.03	245.87	5,926.0	-954.99	-195.4	-436.3	-428.6	0.00	0.00	0.00
6,000.0	5.05	245.87	5,974.9	-1,003.86	-197.4	-440.7	-432.9	2.00	-2.00	0.00
6,100.0	3.05	245.87	6,074.6	-1,103.61	-200.2	-447.1	-439.2	2.00	-2.00	0.00
6,200.0	1.05	245.87	6,174.5	-1,203.54	-201.7	-450.4	-442.4	2.00	-2.00	0.00
EOD TO VERTICAL										
6,252.5	0.00	0.00	6,227.0	-1,256.04	-201.9	-450.8	-442.8	2.00	-2.00	0.00
KOP (10°/100ft BUR)										
6,282.5	0.00	0.00	6,257.0	-1,286.04	-201.9	-450.8	-442.8	0.00	0.00	0.00
6,300.0	1.75	90.54	6,274.5	-1,303.53	-201.9	-450.5	-442.6	10.02	10.02	0.00
6,400.0	11.75	90.54	6,373.7	-1,402.71	-202.0	-438.8	-430.8	10.00	10.00	0.00
6,500.0	21.75	90.54	6,469.3	-1,498.35	-202.3	-410.0	-402.1	10.00	10.00	0.00
6,600.0	31.75	90.54	6,558.5	-1,587.53	-202.7	-365.1	-357.1	10.00	10.00	0.00
6,700.0	41.75	90.54	6,638.6	-1,667.55	-203.3	-305.3	-297.4	10.00	10.00	0.00
SHARON SPRINGS										
6,722.4	43.99	90.54	6,655.0	-1,684.00	-203.4	-290.0	-282.1	10.00	10.00	0.00
6,800.0	51.75	90.54	6,707.0	-1,735.98	-203.9	-232.6	-224.7	10.00	10.00	0.00
NIOBRARA										
6,811.5	52.90	90.54	6,714.0	-1,743.00	-204.0	-223.5	-215.6	10.00	10.00	0.00
6,900.0	61.75	90.54	6,761.7	-1,790.75	-204.7	-149.0	-141.2	10.00	10.00	0.00
7,000.0	71.75	90.54	6,801.2	-1,830.17	-205.6	-57.3	-49.5	10.00	10.00	0.00
7,100.0	81.75	90.54	6,824.1	-1,853.07	-206.5	39.9	47.7	10.00	10.00	0.00
7" ICP - FAIRVIEW 8 (P2) - NIO B TARGET										
7,182.5	90.00	90.54	6,830.0	-1,859.00	-207.3	122.1	129.9	10.00	10.00	0.00
7,200.0	90.00	90.54	6,830.0	-1,859.00	-207.4	139.6	147.4	0.00	0.00	0.00
7,300.0	90.00	90.54	6,830.0	-1,859.01	-208.4	239.6	247.4	0.00	0.00	0.00
7,400.0	90.00	90.54	6,830.0	-1,859.01	-209.3	339.6	347.3	0.00	0.00	0.00
7,500.0	90.00	90.54	6,830.0	-1,859.01	-210.3	439.6	447.3	0.00	0.00	0.00
7,600.0	90.00	90.54	6,830.0	-1,859.02	-211.2	539.6	547.2	0.00	0.00	0.00
7,700.0	90.00	90.54	6,830.0	-1,859.02	-212.1	639.6	647.2	0.00	0.00	0.00
7,800.0	90.00	90.54	6,830.0	-1,859.03	-213.1	739.6	747.2	0.00	0.00	0.00
7,900.0	90.00	90.54	6,830.0	-1,859.03	-214.0	839.6	847.1	0.00	0.00	0.00
8,000.0	90.00	90.54	6,830.0	-1,859.03	-214.9	939.6	947.1	0.00	0.00	0.00
8,100.0	90.00	90.54	6,830.0	-1,859.04	-215.9	1,039.6	1,047.0	0.00	0.00	0.00
8,200.0	90.00	90.54	6,830.0	-1,859.04	-216.8	1,139.6	1,147.0	0.00	0.00	0.00
8,300.0	90.00	90.54	6,830.0	-1,859.04	-217.7	1,239.6	1,246.9	0.00	0.00	0.00
8,400.0	90.00	90.54	6,830.0	-1,859.05	-218.7	1,339.6	1,346.9	0.00	0.00	0.00

Planning Report



Database:	EDM 5000.1 Single User Db	Local Co-ordinate Reference:	Well FAIRVIEW 8
Company:	EXTRACTION OIL & GAS	TVD Reference:	KB-EST @ 4971.0usft (Original Well Elev)
Project:	WELD COUNTY, COLORADO (NAD 83)	MD Reference:	KB-EST @ 4971.0usft (Original Well Elev)
Site:	NW SW SEC. 5 T2N R68W 6th P.M.	North Reference:	True
Well:	FAIRVIEW 8	Survey Calculation Method:	Minimum Curvature
Wellbore:	ORIGINAL WELLBORE		
Design:	PROPOSAL #2		

Planned Survey										
MD (usft)	Inc (°)	Azi (°)	TVD (usft)	SS (usft)	+N/-S (usft)	+E/-W (usft)	Vertical Section (usft)	Dogleg Rate (°/100usft)	Build Rate (°/100usft)	Turn Rate (°/100usft)
8,500.0	90.00	90.54	6,830.1	-1,859.05	-219.6	1,439.6	1,446.9	0.00	0.00	0.00
8,600.0	90.00	90.54	6,830.1	-1,859.05	-220.5	1,539.6	1,546.8	0.00	0.00	0.00
8,700.0	90.00	90.54	6,830.1	-1,859.06	-221.5	1,639.6	1,646.8	0.00	0.00	0.00
8,800.0	90.00	90.53	6,830.1	-1,859.06	-222.4	1,739.6	1,746.7	0.00	0.00	0.00
8,900.0	90.00	90.53	6,830.1	-1,859.06	-223.3	1,839.6	1,846.7	0.00	0.00	0.00
9,000.0	90.00	90.53	6,830.1	-1,859.06	-224.3	1,939.6	1,946.7	0.00	0.00	0.00
9,100.0	90.00	90.53	6,830.1	-1,859.07	-225.2	2,039.5	2,046.6	0.00	0.00	0.00
9,200.0	90.00	90.53	6,830.1	-1,859.07	-226.1	2,139.5	2,146.6	0.00	0.00	0.00
9,300.0	90.00	90.53	6,830.1	-1,859.07	-227.1	2,239.5	2,246.5	0.00	0.00	0.00
9,400.0	90.00	90.53	6,830.1	-1,859.07	-228.0	2,339.5	2,346.5	0.00	0.00	0.00
9,500.0	90.00	90.53	6,830.1	-1,859.07	-228.9	2,439.5	2,446.5	0.00	0.00	0.00
9,600.0	90.00	90.53	6,830.1	-1,859.08	-229.9	2,539.5	2,546.4	0.00	0.00	0.00
9,700.0	90.00	90.53	6,830.1	-1,859.08	-230.8	2,639.5	2,646.4	0.00	0.00	0.00
9,800.0	90.00	90.53	6,830.1	-1,859.08	-231.7	2,739.5	2,746.3	0.00	0.00	0.00
9,900.0	90.00	90.53	6,830.1	-1,859.08	-232.7	2,839.5	2,846.3	0.00	0.00	0.00
10,000.0	90.00	90.53	6,830.1	-1,859.08	-233.6	2,939.5	2,946.3	0.00	0.00	0.00
10,100.0	90.00	90.53	6,830.1	-1,859.08	-234.5	3,039.5	3,046.2	0.00	0.00	0.00
10,200.0	90.00	90.53	6,830.1	-1,859.08	-235.5	3,139.5	3,146.2	0.00	0.00	0.00
10,300.0	90.00	90.53	6,830.1	-1,859.08	-236.4	3,239.5	3,246.1	0.00	0.00	0.00
10,400.0	90.00	90.53	6,830.1	-1,859.08	-237.3	3,339.5	3,346.1	0.00	0.00	0.00
10,500.0	90.00	90.53	6,830.1	-1,859.08	-238.2	3,439.5	3,446.0	0.00	0.00	0.00
10,600.0	90.00	90.53	6,830.1	-1,859.08	-239.2	3,539.5	3,546.0	0.00	0.00	0.00
10,700.0	90.00	90.53	6,830.1	-1,859.08	-240.1	3,639.5	3,646.0	0.00	0.00	0.00
10,800.0	90.00	90.53	6,830.1	-1,859.08	-241.0	3,739.5	3,745.9	0.00	0.00	0.00
10,900.0	90.00	90.53	6,830.1	-1,859.08	-242.0	3,839.5	3,845.9	0.00	0.00	0.00
11,000.0	90.00	90.53	6,830.1	-1,859.08	-242.9	3,939.5	3,945.8	0.00	0.00	0.00
11,100.0	90.00	90.53	6,830.1	-1,859.08	-243.8	4,039.5	4,045.8	0.00	0.00	0.00
11,200.0	90.00	90.53	6,830.1	-1,859.08	-244.7	4,139.5	4,145.8	0.00	0.00	0.00
11,300.0	90.00	90.53	6,830.1	-1,859.08	-245.7	4,239.5	4,245.7	0.00	0.00	0.00
11,400.0	90.00	90.53	6,830.1	-1,859.08	-246.6	4,339.4	4,345.7	0.00	0.00	0.00
11,500.0	90.00	90.53	6,830.1	-1,859.08	-247.5	4,439.4	4,445.6	0.00	0.00	0.00
11,600.0	90.00	90.53	6,830.1	-1,859.08	-248.4	4,539.4	4,545.6	0.00	0.00	0.00
11,700.0	90.00	90.53	6,830.1	-1,859.08	-249.4	4,639.4	4,645.6	0.00	0.00	0.00
11,800.0	90.00	90.53	6,830.1	-1,859.08	-250.3	4,739.4	4,745.5	0.00	0.00	0.00
11,900.0	90.00	90.53	6,830.1	-1,859.07	-251.2	4,839.4	4,845.5	0.00	0.00	0.00
12,000.0	90.00	90.53	6,830.1	-1,859.07	-252.1	4,939.4	4,945.4	0.00	0.00	0.00
12,100.0	90.00	90.53	6,830.1	-1,859.07	-253.1	5,039.4	5,045.4	0.00	0.00	0.00
12,200.0	90.00	90.53	6,830.1	-1,859.07	-254.0	5,139.4	5,145.3	0.00	0.00	0.00
12,300.0	90.00	90.53	6,830.1	-1,859.07	-254.9	5,239.4	5,245.3	0.00	0.00	0.00
12,400.0	90.00	90.53	6,830.1	-1,859.06	-255.8	5,339.4	5,345.3	0.00	0.00	0.00
12,500.0	90.00	90.53	6,830.1	-1,859.06	-256.8	5,439.4	5,445.2	0.00	0.00	0.00
12,600.0	90.00	90.53	6,830.1	-1,859.06	-257.7	5,539.4	5,545.2	0.00	0.00	0.00
12,700.0	90.00	90.53	6,830.1	-1,859.06	-258.6	5,639.4	5,645.1	0.00	0.00	0.00
12,800.0	90.00	90.53	6,830.1	-1,859.05	-259.5	5,739.4	5,745.1	0.00	0.00	0.00
12,900.0	90.00	90.53	6,830.1	-1,859.05	-260.4	5,839.4	5,845.1	0.00	0.00	0.00
13,000.0	90.00	90.53	6,830.0	-1,859.05	-261.4	5,939.4	5,945.0	0.00	0.00	0.00
13,100.0	90.00	90.53	6,830.0	-1,859.05	-262.3	6,039.4	6,045.0	0.00	0.00	0.00
13,200.0	90.00	90.53	6,830.0	-1,859.04	-263.2	6,139.4	6,144.9	0.00	0.00	0.00
13,300.0	90.00	90.53	6,830.0	-1,859.04	-264.1	6,239.4	6,244.9	0.00	0.00	0.00
13,400.0	90.00	90.53	6,830.0	-1,859.04	-265.1	6,339.4	6,344.9	0.00	0.00	0.00
13,500.0	90.00	90.53	6,830.0	-1,859.03	-266.0	6,439.4	6,444.8	0.00	0.00	0.00
13,600.0	90.00	90.53	6,830.0	-1,859.03	-266.9	6,539.4	6,544.8	0.00	0.00	0.00
13,700.0	90.00	90.53	6,830.0	-1,859.02	-267.8	6,639.4	6,644.7	0.00	0.00	0.00
13,800.0	90.00	90.53	6,830.0	-1,859.02	-268.7	6,739.3	6,744.7	0.00	0.00	0.00

Database:	EDM 5000.1 Single User Db	Local Co-ordinate Reference:	Well FAIRVIEW 8
Company:	EXTRACTION OIL & GAS	TVD Reference:	KB-EST @ 4971.0usft (Original Well Elev)
Project:	WELD COUNTY, COLORADO (NAD 83)	MD Reference:	KB-EST @ 4971.0usft (Original Well Elev)
Site:	NW SW SEC. 5 T2N R68W 6th P.M.	North Reference:	True
Well:	FAIRVIEW 8	Survey Calculation Method:	Minimum Curvature
Wellbore:	ORIGINAL WELLBORE		
Design:	PROPOSAL #2		

Planned Survey

MD (usft)	Inc (°)	Azi (°)	TVD (usft)	SS (usft)	+N/-S (usft)	+E/-W (usft)	Vertical Section (usft)	Dogleg Rate (°/100usft)	Build Rate (°/100usft)	Turn Rate (°/100usft)
13,900.0	90.00	90.53	6,830.0	-1,859.02	-269.6	6,839.3	6,844.6	0.00	0.00	0.00
14,000.0	90.00	90.53	6,830.0	-1,859.01	-270.6	6,939.3	6,944.6	0.00	0.00	0.00
14,100.0	90.00	90.53	6,830.0	-1,859.01	-271.5	7,039.3	7,044.6	0.00	0.00	0.00
14,200.0	90.00	90.53	6,830.0	-1,859.00	-272.4	7,139.3	7,144.5	0.00	0.00	0.00
BHL - FAIRVIEW 8 (P2)										
14,254.1	90.00	90.53	6,830.0	-1,859.00	-272.9	7,193.4	7,198.6	0.00	0.00	0.00

Formations

MD (usft)	TVD (usft)	Name	Lithology	Dip (°)	Dip Direction (°)
3,040.8	3,032.0	PARKMAN		0.00	
3,863.4	3,850.0	SUSSEX		0.00	
4,426.5	4,410.0	SHANNON		0.00	
6,722.4	6,655.0	SHARON SPRINGS		0.00	
6,811.5	6,714.0	NIOBRARA		0.00	
7,182.5	6,830.0	NIO B TARGET		0.00	

Plan Annotations

MD (usft)	TVD (usft)	Local Coordinates		Comment
		+N/-S (usft)	+E/-W (usft)	
1,250.0	1,250.0	0.0	0.0	START NUDGE (2°/100ft BUR)
1,551.6	1,551.0	-6.5	-14.5	EOB TO 6.03° INC
5,950.9	5,926.0	-195.4	-436.3	END OF TANGENT
6,252.5	6,227.0	-201.9	-450.8	EOD TO VERTICAL
6,282.5	6,257.0	-201.9	-450.8	KOP (10°/100ft BUR)
7,182.5	6,830.0	-207.3	122.1	7" ICP - FAIRVIEW 8 (P2)
14,254.1	6,830.0	-272.9	7,193.4	BHL - FAIRVIEW 8 (P2)