

#### LEGEND:

 PROPOSED LOCATION



#### GREAT WESTERN OIL & GAS COMPANY

SCHNEIDER HD 11-392HN, 369HN, 369HC, 352HN,  
 329HN, 329HC, 289HN, 272HC, 272HN, 249HN, 209HC,  
 209HN, OPEN SLOT-O, N & A  
 SECTION 7, T4N, R66W, 6th P.M.  
 SW 1/4 SW 1/4

DRAWN BY: J.L.G.

DATE DRAWN: 06-06-14

SCALE: 1:100,000

REVISED: 12-01-14

**ACCESS ROAD MAP**

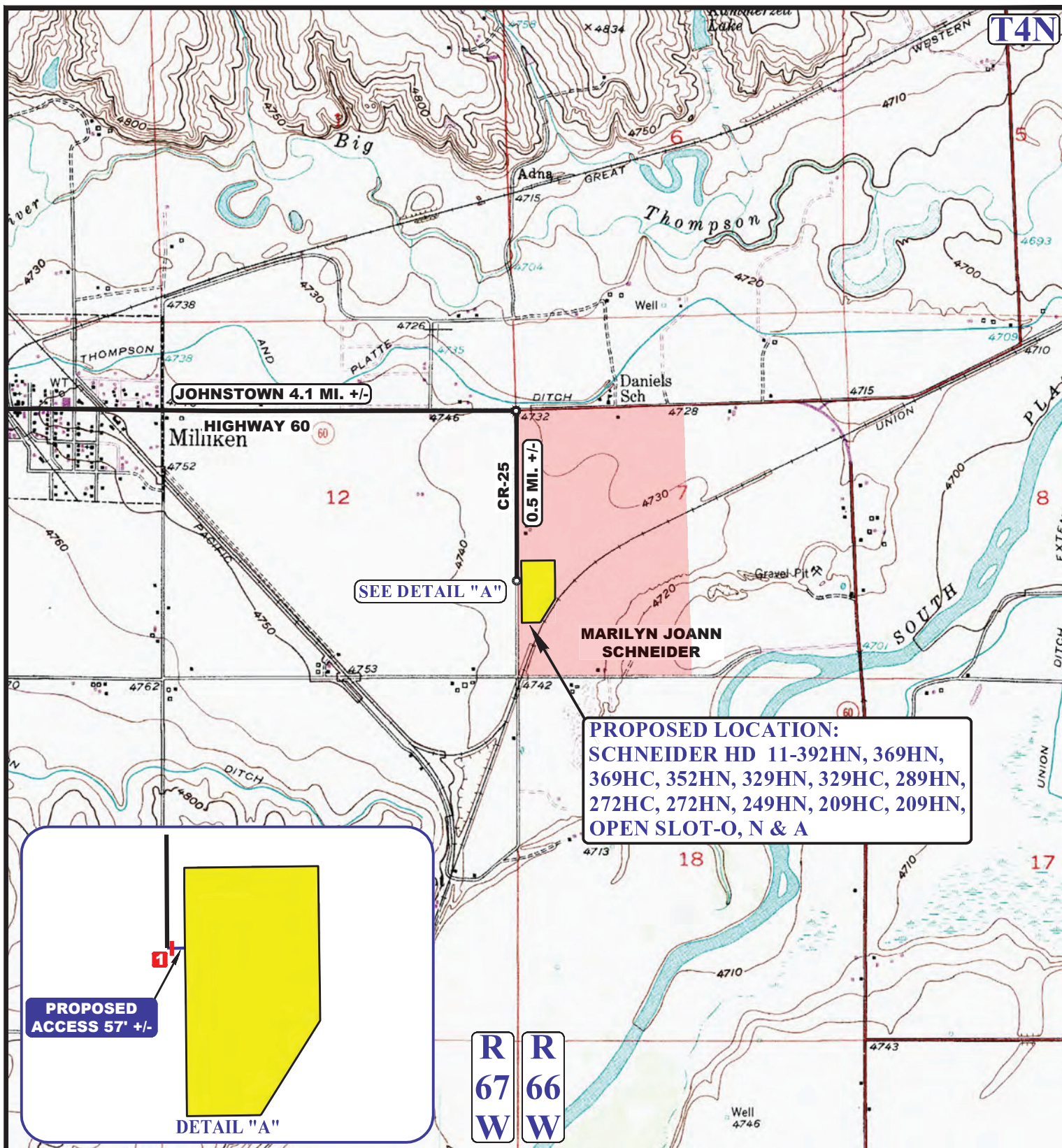
**TOPO A**



**UELS, LLC**

Corporate Office \* 85 South 200 East  
 Vernal, UT 84078 \* (435) 789-1017





NOTE: PARCEL DATA SHOWN HAS BEEN OBTAINED FROM VARIOUS SOURCES AND SHOULD BE USED FOR MAPPING, GRAPHIC AND PLANNING PURPOSES ONLY. NO WARRANTY IS MADE BY UINTAH ENGINEERING AND LAND SURVEYING (UELS) FOR ACCURACY OF THE PARCEL DATA.

#### LEGEND:

- EXISTING ROAD
- - - PROPOSED ROAD
- 18" CULVERT REQUIRED

#### GREAT WESTERN OIL & GAS COMPANY

SCHNEIDER HD 11-392HN, 369HN, 369HC, 352HN, 329HN, 329HC, 289HN, 272HC, 272HN, 249HN, 209HC, 209HN, OPEN SLOT-O, N & A  
 SECTION 7, T4N, R66W, 6th P.M.  
 SW 1/4 SW 1/4

DRAWN BY: J.L.G.

DATE DRAWN: 06-06-14

SCALE: 1" = 2000'

REVISED: 12-01-14

**ACCESS ROAD MAP**

**TOPO B**



**UELS, LLC**  
 Corporate Office \* 85 South 200 East  
 Vernal, UT 84078 \* (435) 789-1017

