



CARRIZO

CARRIZO OIL & GAS, INC.

Field: Niobrara CONZ'83

Site: Ohare 1-29-11-57 Pad

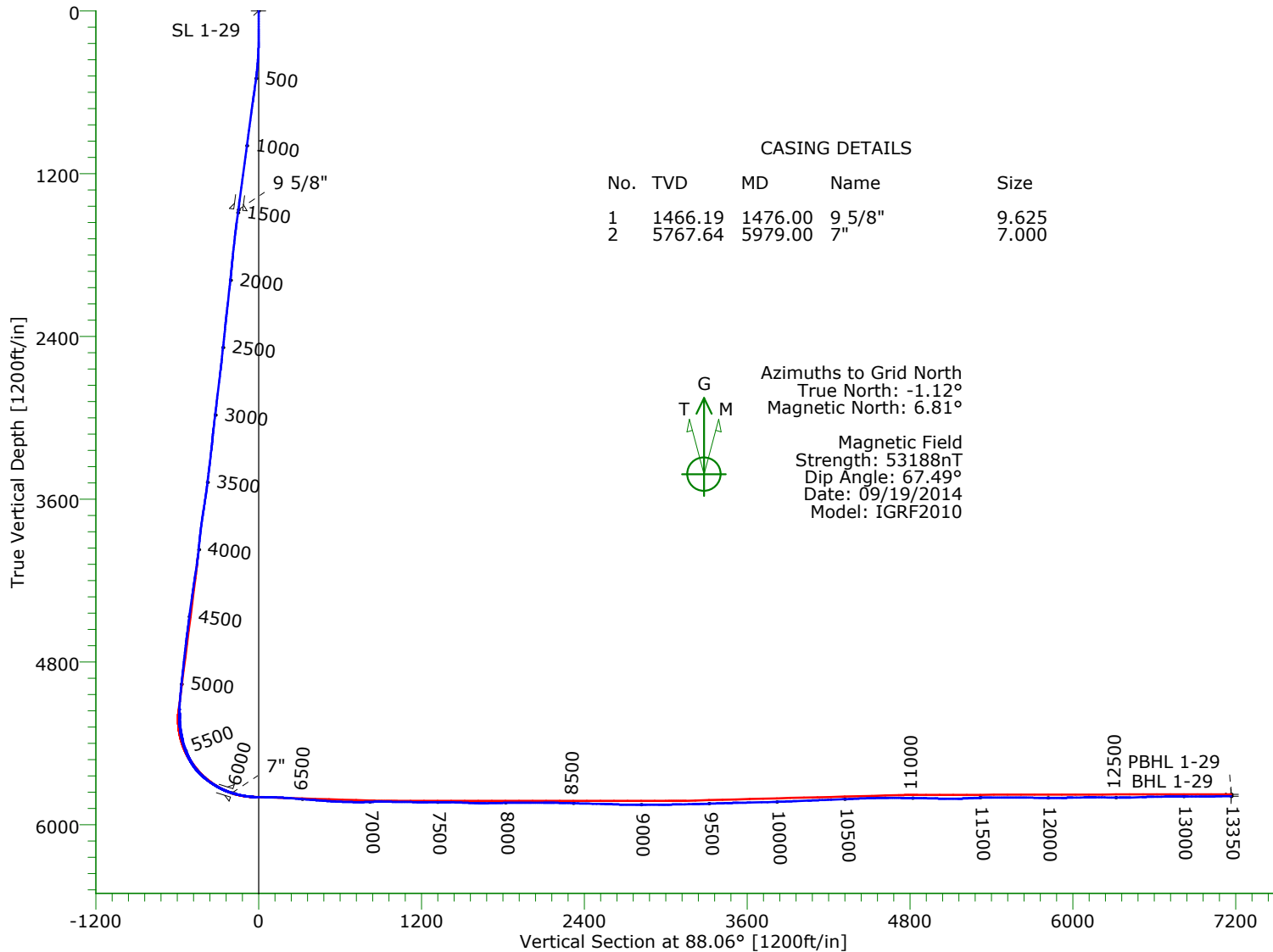
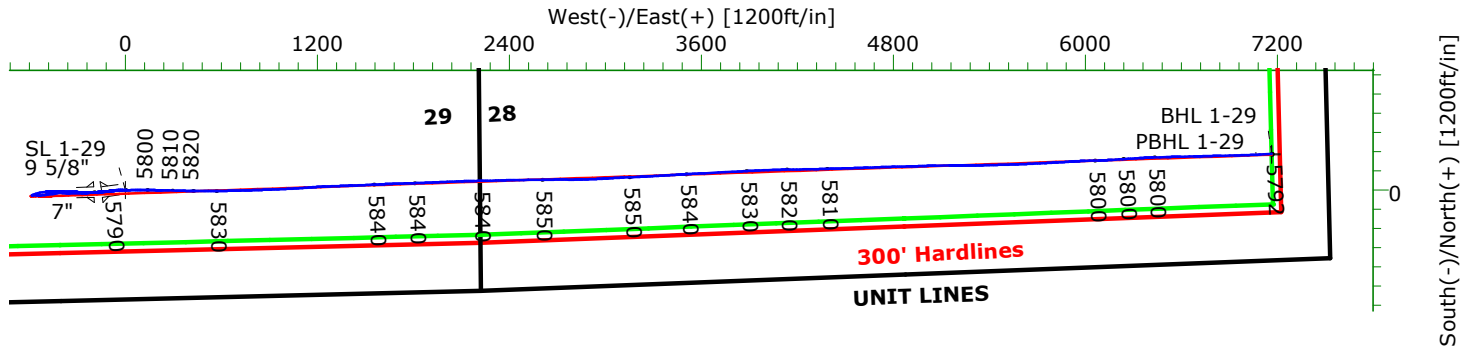
Well: 1-29-11-57

Wellpath: Original Hole



Precision

Directional Services



Precision Directional Services, Inc.

Survey Report

Company: CARRIZO OIL & GAS, INC. Field: Niobrara CONZ'83 Site: Ohare 1-29-11-57 Pad Well: 1-29-11-57 Wellpath: Original Hole	Date: 09/29/2014 Co-ordinate(NE) Reference: Vertical (TVD) Reference: Section (VS) Reference: Survey Calculation Method:	Time: 14:51:18 Well: 1-29-11-57, Grid North 4927'GL+17'KB 4944.0 Well (0.00N,0.00E,88.06Azi) Minimum Curvature	Page: 1 Db: Adapti
---	---	---	-------------------------------------

Field: Niobrara CONZ'83			
Map System: US State Plane Coordinate System 1983		Map Zone: Colorado, Northern Zone	
Geo Datum: GRS 1980		Coordinate System: Well Centre	
Sys Datum: Mean Sea Level		Geomagnetic Model: IGRF2010	

Site: Ohare 1-29-11-57 Pad First plans use lats/longs (x&y) unavailable Weld County, Colorado			
Site Position:	Northing: 1572399.02 ft	Latitude: 40 53 30.659 N	
From: Geographic	Easting: 3477200.69 ft	Longitude: 103 46 26.363 W	
Position Uncertainty: 0.00 ft		North Reference: Grid	
Ground Level: 4927.00 ft		Grid Convergence: 1.12 deg	

Well: 1-29-11-57				Slot Name:			
Well Position:	+N/-S -3.07 ft	Northing: 1572395.95 ft	Latitude: 40 53 30.630 N				
	+E/-W -8.12 ft	Easting : 3477192.57 ft	Longitude: 103 46 26.469 W				
Position Uncertainty:	0.00 ft						

Wellpath: Original Hole				Drilled From: Surface					
Current Datum: 4927'GL+17'KB				Tie-on Depth: 0.00 ft					
Magnetic Data: 09/19/2014				Above System Datum: Mean Sea Level					
Field Strength: 53188 nT				Declination: 7.92 deg					
Vertical Section: Depth From (TVD)				Mag Dip Angle: 67.49 deg					
		ft		+N/-S ft		+E/-W ft		Direction deg	
0.00		0.00		0.00		0.00		88.06	

Survey Program for Definitive Wellpath					
Date: 09/29/2014		Validated: No		Version: 3	
Actual From	To	Survey	Toolcode	Tool Name	
136.00	13280.00	Survey #1 (136.00-13280.00)	MWD	Std MWD	
13350.00	13350.00	Survey #2 (13350.00-13350.00)	Project	Projection	

Survey										
MD ft	Incl deg	Azim deg	TVD ft	+N/-S ft	+E/-W ft	VS ft	DLS deg/100ft	Build deg/100ft	Turn deg/100ft	Tool/Comment
0.00	0.00	0.00	0.00	0.00	0.00	0.00	0.00	0.00	0.00	TIE LINE
136.00	0.70	92.90	136.00	-0.04	0.83	0.83	0.51	0.51	0.00	MWD
228.00	0.60	269.30	227.99	-0.08	0.91	0.91	1.41	-0.11	191.74	MWD
317.00	2.80	270.00	316.95	-0.08	-1.73	-1.73	2.47	2.47	0.79	MWD
407.00	5.20	275.90	406.72	0.34	-7.99	-7.97	2.70	2.67	6.56	MWD
496.00	7.50	275.40	495.17	1.30	-17.78	-17.73	2.58	2.58	-0.56	MWD
586.00	8.10	276.30	584.34	2.55	-29.93	-29.83	0.68	0.67	1.00	MWD
676.00	7.90	263.80	673.47	2.57	-42.38	-42.27	1.94	-0.22	-13.89	MWD
767.00	8.00	259.60	763.60	0.76	-54.83	-54.77	0.65	0.11	-4.62	MWD
858.00	7.90	259.20	853.72	-1.56	-67.20	-67.22	0.13	-0.11	-0.44	MWD
949.00	7.70	260.10	943.88	-3.78	-79.35	-79.43	0.26	-0.22	0.99	MWD
1040.00	7.80	260.30	1034.05	-5.87	-91.44	-91.59	0.11	0.11	0.22	MWD
1131.00	7.70	260.80	1124.22	-7.88	-103.55	-103.75	0.13	-0.11	0.55	MWD
1221.00	7.70	261.00	1213.41	-9.79	-115.45	-115.72	0.03	0.00	0.22	MWD
1311.00	7.50	260.60	1302.62	-11.69	-127.20	-127.53	0.23	-0.22	-0.44	MWD
1402.00	7.50	261.20	1392.84	-13.57	-138.93	-139.31	0.09	0.00	0.66	MWD
1437.00	7.70	262.00	1427.53	-14.25	-143.51	-143.91	0.65	0.57	2.29	MWD
1483.00	7.50	261.50	1473.13	-15.12	-149.53	-149.96	0.46	-0.43	-1.09	MWD
1568.00	7.60	262.40	1557.39	-16.68	-160.59	-161.06	0.18	0.12	1.06	MWD
1653.00	6.60	272.90	1641.74	-17.18	-171.04	-171.52	1.92	-1.18	12.35	MWD
1738.00	6.00	275.40	1726.23	-16.51	-180.34	-180.80	0.78	-0.71	2.94	MWD
1823.00	6.40	273.80	1810.73	-15.78	-189.49	-189.92	0.51	0.47	-1.88	MWD

Precision Directional Services, Inc.

Survey Report

Company: CARRIZO OIL & GAS, INC.	Date: 09/29/2014	Time: 14:51:18	Page: 2
Field: Niobrara CONZ'83	Co-ordinate(NE) Reference: Well: 1-29-11-57, Grid North		
Site: Ohare 1-29-11-57 Pad	Vertical (TVD) Reference: 4927'GL+17'KB 4944.0		
Well: 1-29-11-57	Section (VS) Reference: Well (0.00N,0.00E,88.06Azi)		
Wellpath: Original Hole	Survey Calculation Method: Minimum Curvature	Db: Adapti	

Survey

MD ft	Incl deg	Azim deg	TVD ft	+N/-S ft	+E/-W ft	VS ft	DLS deg/100ft	Build deg/100ft	Turn deg/100ft	Tool/Comment
1907.00	5.20	259.80	1894.30	-16.15	-197.91	-198.34	2.20	-1.43	-16.67	MWD
1992.00	6.50	271.70	1978.86	-16.68	-206.51	-206.96	2.08	1.53	14.00	MWD
2076.00	6.30	265.20	2062.34	-16.93	-215.86	-216.31	0.89	-0.24	-7.74	MWD
2161.00	6.30	261.00	2146.82	-18.05	-225.11	-225.59	0.54	0.00	-4.94	MWD
2246.00	6.60	254.50	2231.29	-20.08	-234.42	-234.97	0.93	0.35	-7.65	MWD
2331.00	6.20	269.60	2315.76	-21.42	-243.72	-244.31	2.03	-0.47	17.76	MWD
2416.00	6.00	273.30	2400.28	-21.20	-252.75	-253.32	0.52	-0.24	4.35	MWD
2500.00	6.10	270.10	2483.81	-20.94	-261.59	-262.15	0.42	0.12	-3.81	MWD
2586.00	5.80	268.70	2569.35	-21.03	-270.51	-271.06	0.39	-0.35	-1.63	MWD
2670.00	7.20	275.20	2652.81	-20.65	-279.99	-280.53	1.88	1.67	7.74	MWD
2756.00	6.90	271.40	2738.16	-20.03	-290.52	-291.04	0.64	-0.35	-4.42	MWD
2841.00	6.90	270.50	2822.55	-19.86	-300.73	-301.23	0.13	0.00	-1.06	MWD
2926.00	6.30	267.80	2906.98	-20.00	-310.50	-311.00	0.79	-0.71	-3.18	MWD
3010.00	7.30	270.80	2990.39	-20.10	-320.44	-320.94	1.26	1.19	3.57	MWD
3095.00	6.80	270.10	3074.75	-20.02	-330.87	-331.36	0.60	-0.59	-0.82	MWD
3181.00	4.90	261.20	3160.30	-20.57	-339.60	-340.10	2.44	-2.21	-10.35	MWD
3266.00	6.90	266.40	3244.84	-21.45	-348.28	-348.81	2.43	2.35	6.12	MWD
3351.00	6.30	266.40	3329.28	-22.06	-358.03	-358.57	0.71	-0.71	0.00	MWD
3436.00	7.50	274.90	3413.66	-21.88	-368.21	-368.74	1.85	1.41	10.00	MWD
3521.00	6.70	276.10	3498.01	-20.88	-378.67	-379.16	0.96	-0.94	1.41	MWD
3606.00	8.40	274.20	3582.27	-19.90	-389.79	-390.24	2.02	2.00	-2.24	MWD
3691.00	9.30	275.10	3666.26	-18.83	-402.83	-403.23	1.07	1.06	1.06	MWD
3776.00	8.20	263.50	3750.28	-18.91	-415.69	-416.09	2.44	-1.29	-13.65	MWD
3861.00	6.90	260.60	3834.54	-20.43	-426.75	-427.20	1.59	-1.53	-3.41	MWD
3946.00	5.60	254.30	3919.03	-22.38	-435.78	-436.29	1.73	-1.53	-7.41	MWD
4032.00	6.30	258.20	4004.57	-24.48	-444.44	-445.02	0.94	0.81	4.53	MWD
4117.00	8.40	266.40	4088.87	-25.83	-455.20	-455.82	2.76	2.47	9.65	MWD
4202.00	9.00	264.50	4172.89	-26.85	-468.02	-468.66	0.78	0.71	-2.24	MWD
4287.00	8.30	262.60	4256.92	-28.28	-480.72	-481.40	0.89	-0.82	-2.24	MWD
4372.00	7.70	259.10	4341.09	-30.15	-492.40	-493.13	0.91	-0.71	-4.12	MWD
4457.00	7.70	267.80	4425.33	-31.44	-503.68	-504.45	1.37	0.00	10.24	MWD
4540.00	7.60	261.50	4507.59	-32.47	-514.66	-515.47	1.02	-0.12	-7.59	MWD
4625.00	7.10	256.20	4591.90	-34.55	-525.32	-526.19	0.99	-0.59	-6.24	MWD
4710.00	6.40	271.70	4676.31	-35.66	-535.16	-536.06	2.29	-0.82	18.24	MWD
4794.00	6.90	279.60	4759.75	-34.68	-544.82	-545.68	1.24	0.60	9.40	MWD
4878.00	6.20	280.50	4843.20	-33.02	-554.25	-555.05	0.84	-0.83	1.07	MWD
4963.00	6.30	270.70	4927.70	-32.12	-563.43	-564.19	1.26	0.12	-11.53	MWD
5048.00	5.40	264.50	5012.26	-32.45	-572.07	-572.84	1.29	-1.06	-7.29	MWD
5091.00	4.70	265.90	5055.09	-32.77	-575.85	-576.62	1.65	-1.63	3.26	MWD
5128.00	4.50	265.40	5091.97	-32.99	-578.80	-579.59	0.55	-0.54	-1.35	MWD
5171.00	4.00	266.40	5134.85	-33.22	-581.98	-582.77	1.18	-1.16	2.33	MWD
5213.00	1.90	278.40	5176.79	-33.21	-584.13	-584.92	5.18	-5.00	28.57	MWD
5254.00	2.00	66.40	5217.78	-32.83	-584.15	-584.93	9.14	0.24	360.98	MWD
5297.00	5.10	72.70	5260.70	-31.96	-581.64	-582.39	7.26	7.21	14.65	MWD
5339.00	7.70	66.90	5302.43	-30.30	-577.27	-577.96	6.37	6.19	-13.81	MWD
5382.00	11.60	68.50	5344.81	-27.58	-570.59	-571.20	9.09	9.07	3.72	MWD
5424.00	16.10	72.00	5385.58	-24.23	-561.12	-561.62	10.89	10.71	8.33	MWD
5467.00	18.70	73.10	5426.61	-20.39	-548.85	-549.23	6.09	6.05	2.56	MWD
5509.00	21.70	76.90	5466.03	-16.67	-534.84	-535.10	7.79	7.14	9.05	MWD
5551.00	25.90	81.50	5504.45	-13.55	-518.20	-518.36	10.93	10.00	10.95	MWD
5593.00	30.70	86.80	5541.42	-11.60	-498.41	-498.51	12.89	11.43	12.62	MWD
5635.00	36.00	89.40	5576.50	-10.87	-475.34	-475.44	13.07	12.62	6.19	MWD
5678.00	41.80	90.30	5609.95	-10.81	-448.35	-448.46	13.55	13.49	2.09	MWD

Precision Directional Services, Inc.

Survey Report

Company: CARRIZO OIL & GAS, INC. Field: Niobrara CONZ'83 Site: Ohare 1-29-11-57 Pad Well: 1-29-11-57 Wellpath: Original Hole	Date: 09/29/2014 Co-ordinate(NE) Reference: Well: 1-29-11-57, Grid North Vertical (TVD) Reference: 4927'GL+17'KB 4944.0 Section (VS) Reference: Well (0.00N,0.00E,88.06Azi) Survey Calculation Method: Minimum Curvature Db: Adapti
---	--

Survey

MD ft	Incl deg	Azim deg	TVD ft	+N/-S ft	+E/-W ft	VS ft	DLS deg/100ft	Build deg/100ft	Turn deg/100ft	Tool/Comment
5720.00	48.00	90.50	5639.68	-11.02	-418.72	-418.85	14.77	14.76	0.48	MWD
5762.00	52.70	90.70	5666.48	-11.36	-386.39	-386.56	11.20	11.19	0.48	MWD
5805.00	55.60	91.00	5691.66	-11.88	-351.55	-351.75	6.77	6.74	0.70	MWD
5847.00	58.80	91.50	5714.41	-12.65	-316.26	-316.50	7.68	7.62	1.19	MWD
5889.00	62.80	91.20	5734.89	-13.51	-279.61	-279.91	9.54	9.52	-0.71	MWD
5930.00	68.90	91.20	5751.66	-14.30	-242.23	-242.57	14.88	14.88	0.00	MWD
6027.00	77.10	85.20	5780.02	-11.28	-149.64	-149.94	10.31	8.45	-6.19	MWD
6070.00	80.50	85.00	5788.37	-7.68	-107.62	-107.82	7.92	7.91	-0.47	MWD
6112.00	83.90	86.80	5794.07	-4.71	-66.12	-66.25	9.14	8.10	4.29	MWD
6155.00	88.70	88.20	5796.84	-2.84	-23.27	-23.35	11.63	11.16	3.26	MWD
6197.00	89.30	88.00	5797.58	-1.44	18.70	18.64	1.51	1.43	-0.48	MWD
6240.00	88.50	88.70	5798.40	-0.21	61.68	61.63	2.47	-1.86	1.63	MWD
6282.00	89.10	90.30	5799.28	0.16	103.66	103.61	4.07	1.43	3.81	MWD
6325.00	88.20	90.80	5800.29	-0.25	146.65	146.56	2.39	-2.09	1.16	MWD
6367.00	86.70	91.40	5802.16	-1.06	188.60	188.45	3.85	-3.57	1.43	MWD
6409.00	85.50	91.00	5805.02	-1.94	230.49	230.29	3.01	-2.86	-0.95	MWD
6451.00	85.20	91.20	5808.42	-2.74	272.35	272.10	0.86	-0.71	0.48	MWD
6494.00	86.10	91.20	5811.69	-3.64	315.21	314.91	2.09	2.09	0.00	MWD
6536.00	85.70	91.40	5814.69	-4.59	357.09	356.73	1.06	-0.95	0.48	MWD
6579.00	85.00	91.50	5818.17	-5.67	399.94	399.52	1.64	-1.63	0.23	MWD
6621.00	85.70	90.50	5821.58	-6.40	441.79	441.32	2.90	1.67	-2.38	MWD
6664.00	85.60	90.10	5824.84	-6.63	484.67	484.17	0.96	-0.23	-0.93	MWD
6749.00	87.30	89.30	5830.10	-6.18	569.50	568.96	2.21	2.00	-0.94	MWD
6834.00	88.50	88.70	5833.22	-4.70	654.43	653.89	1.58	1.41	-0.71	MWD
6919.00	90.00	88.40	5834.33	-2.55	739.39	738.88	1.80	1.76	-0.35	MWD
7004.00	92.10	88.20	5832.77	-0.03	824.33	823.86	2.48	2.47	-0.24	MWD
7089.00	89.80	88.00	5831.36	2.79	909.27	908.84	2.72	-2.71	-0.24	MWD
7174.00	89.10	87.30	5832.18	6.28	994.19	993.84	1.16	-0.82	-0.82	MWD
7259.00	89.30	86.40	5833.37	10.95	1079.06	1078.81	1.08	0.24	-1.06	MWD
7345.00	89.20	85.60	5834.49	16.94	1164.84	1164.74	0.94	-0.12	-0.93	MWD
7430.00	90.00	87.80	5835.09	21.84	1249.69	1249.71	2.75	0.94	2.59	MWD
7515.00	90.70	88.20	5834.57	24.80	1334.64	1334.71	0.95	0.82	0.47	MWD
7600.00	88.40	87.70	5835.23	27.84	1419.57	1419.70	2.77	-2.71	-0.59	MWD
7685.00	87.60	87.50	5838.20	31.40	1504.45	1504.65	0.97	-0.94	-0.24	MWD
7770.00	88.30	87.00	5841.24	35.48	1589.29	1589.58	1.01	0.82	-0.59	MWD
7855.00	90.40	88.20	5842.21	39.03	1674.21	1674.57	2.85	2.47	1.41	MWD
7940.00	91.40	88.50	5840.87	41.48	1759.16	1759.55	1.23	1.18	0.35	MWD
8024.00	90.70	88.00	5839.33	44.05	1843.10	1843.54	1.02	-0.83	-0.60	MWD
8109.00	89.50	87.30	5839.18	47.53	1928.03	1928.54	1.63	-1.41	-0.82	MWD
8194.00	90.30	88.00	5839.33	51.02	2012.96	2013.53	1.25	0.94	0.82	MWD
8279.00	90.40	87.50	5838.81	54.35	2097.89	2098.53	0.60	0.12	-0.59	MWD
8363.00	88.90	89.30	5839.33	56.70	2181.85	2182.52	2.79	-1.79	2.14	MWD
8444.00	88.60	88.70	5841.09	58.11	2262.82	2263.49	0.83	-0.37	-0.74	MWD
8530.00	88.20	88.40	5843.49	60.29	2348.76	2349.45	0.58	-0.47	-0.35	MWD
8615.00	88.90	89.10	5845.64	62.14	2433.71	2434.42	1.16	0.82	0.82	MWD
8700.00	89.00	89.30	5847.20	63.33	2518.69	2519.39	0.26	0.12	0.24	MWD
8785.00	87.30	89.30	5849.95	64.37	2603.63	2604.32	2.00	-2.00	0.00	MWD
8870.00	88.70	89.80	5852.91	65.03	2688.58	2689.24	1.75	1.65	0.59	MWD
8955.00	89.90	90.30	5853.95	64.96	2773.57	2774.18	1.53	1.41	0.59	MWD
9040.00	90.30	88.40	5853.80	65.92	2858.56	2859.15	2.28	0.47	-2.24	MWD
9126.00	90.00	87.50	5853.58	69.00	2944.50	2945.15	1.10	-0.35	-1.05	MWD
9210.00	91.50	86.30	5852.48	73.54	3028.37	3029.12	2.29	1.79	-1.43	MWD
9295.00	91.00	87.50	5850.62	78.14	3113.22	3114.08	1.53	-0.59	1.41	MWD
9380.00	90.90	87.30	5849.21	81.99	3198.12	3199.06	0.26	-0.12	-0.24	MWD

Precision Directional Services, Inc.

Survey Report

Company: CARRIZO OIL & GAS, INC. Field: Niobrara CONZ'83 Site: Ohare 1-29-11-57 Pad Well: 1-29-11-57 Wellpath: Original Hole	Date: 09/29/2014 Co-ordinate(NE) Reference: Well: 1-29-11-57, Grid North Vertical (TVD) Reference: 4927'GL+17'KB 4944.0 Section (VS) Reference: Well (0.00N,0.00E,88.06Azi) Survey Calculation Method: Minimum Curvature Db: Adapti
---	---

Survey

MD ft	Incl deg	Azim deg	TVD ft	+N/-S ft	+E/-W ft	VS ft	DLS deg/100ft	Build deg/100ft	Turn deg/100ft	Tool/Comment
9464.00	92.20	87.10	5846.94	86.09	3281.99	3283.02	1.57	1.55	-0.24	MWD
9549.00	91.60	86.80	5844.12	90.61	3366.82	3367.96	0.79	-0.71	-0.35	MWD
9634.00	92.20	86.10	5841.31	95.87	3451.61	3452.88	1.08	0.71	-0.82	MWD
9719.00	90.70	87.30	5839.16	100.76	3536.44	3537.82	2.26	-1.76	1.41	MWD
9804.00	91.50	87.10	5837.52	104.92	3621.32	3622.80	0.97	0.94	-0.24	MWD
9889.00	91.50	87.00	5835.30	109.29	3706.18	3707.75	0.12	0.00	-0.12	MWD
9975.00	91.60	87.10	5832.97	113.71	3792.03	3793.71	0.16	0.12	0.12	MWD
10060.00	92.20	86.80	5830.15	118.23	3876.87	3878.65	0.79	0.71	-0.35	MWD
10145.00	92.40	87.70	5826.74	122.31	3961.70	3963.57	1.08	0.24	1.06	MWD
10230.00	92.40	88.00	5823.18	125.49	4046.56	4048.49	0.35	0.00	0.35	MWD
10315.00	91.90	89.30	5819.99	127.50	4131.48	4133.43	1.64	-0.59	1.53	MWD
10400.00	92.20	89.10	5816.95	128.68	4216.42	4218.36	0.42	0.35	-0.24	MWD
10485.00	92.20	88.70	5813.69	130.31	4301.34	4303.28	0.47	0.00	-0.47	MWD
10570.00	92.90	88.20	5809.91	132.61	4386.22	4388.20	1.01	0.82	-0.59	MWD
10655.00	92.00	88.60	5806.28	134.98	4471.11	4473.12	1.16	-1.06	0.47	MWD
10740.00	91.30	88.40	5803.83	137.20	4556.04	4558.08	0.86	-0.82	-0.24	MWD
10826.00	89.70	88.00	5803.08	139.91	4642.00	4644.07	1.92	-1.86	-0.47	MWD
10910.00	89.20	87.70	5803.88	143.06	4725.93	4728.07	0.69	-0.60	-0.36	MWD
10995.00	89.70	88.90	5804.70	145.58	4810.89	4813.06	1.53	0.59	1.41	MWD
11080.00	89.10	88.70	5805.59	147.36	4895.87	4898.05	0.74	-0.71	-0.24	MWD
11164.00	88.50	87.80	5807.35	149.92	4979.81	4982.03	1.29	-0.71	-1.07	MWD
11249.00	89.40	89.30	5808.91	152.07	5064.76	5067.01	2.06	1.06	1.76	MWD
11334.00	90.70	89.30	5808.83	153.11	5149.75	5151.99	1.53	1.53	0.00	MWD
11420.00	93.60	90.00	5805.61	153.64	5235.68	5237.88	3.47	3.37	0.81	MWD
11505.00	91.60	89.10	5801.75	154.30	5320.59	5322.76	2.58	-2.35	-1.06	MWD
11589.00	90.00	88.70	5800.58	155.92	5404.56	5406.74	1.96	-1.90	-0.48	MWD
11674.00	89.30	88.40	5801.10	158.07	5489.53	5491.74	0.90	-0.82	-0.35	MWD
11759.00	90.30	88.20	5801.39	160.59	5574.49	5576.73	1.20	1.18	-0.24	MWD
11843.00	89.50	87.30	5801.54	163.89	5658.43	5660.73	1.43	-0.95	-1.07	MWD
11928.00	89.30	86.80	5802.43	168.26	5743.31	5745.71	0.63	-0.24	-0.59	MWD
12013.00	90.50	87.10	5802.58	172.78	5828.19	5830.69	1.46	1.41	0.35	MWD
12098.00	90.00	85.90	5802.21	177.97	5913.02	5915.66	1.53	-0.59	-1.41	MWD
12183.00	91.20	88.40	5801.32	182.20	5997.91	6000.64	3.26	1.41	2.94	MWD
12268.00	91.30	88.20	5799.46	184.72	6082.85	6085.62	0.26	0.12	-0.24	MWD
12353.00	89.30	86.40	5799.02	188.72	6167.75	6170.60	3.17	-2.35	-2.12	MWD
12439.00	89.00	86.30	5800.29	194.20	6253.56	6256.55	0.37	-0.35	-0.12	MWD
12524.00	89.50	86.60	5801.41	199.46	6338.39	6341.51	0.69	0.59	0.35	MWD
12609.00	92.10	88.20	5800.22	203.32	6423.28	6426.49	3.59	3.06	1.88	MWD
12694.00	92.10	88.00	5797.11	206.13	6508.18	6511.43	0.24	0.00	-0.24	MWD
12779.00	90.90	89.10	5794.88	208.28	6593.12	6596.39	1.91	-1.41	1.29	MWD
12863.00	90.70	88.90	5793.71	209.75	6677.10	6680.37	0.34	-0.24	-0.24	MWD
12947.00	89.50	88.00	5793.56	212.02	6761.07	6764.37	1.79	-1.43	-1.07	MWD
13032.00	90.50	88.90	5793.56	214.32	6846.03	6849.37	1.58	1.18	1.06	MWD
13117.00	90.40	88.70	5792.89	216.10	6931.01	6934.36	0.26	-0.12	-0.24	MWD
13202.00	90.50	88.00	5792.23	218.55	7015.97	7019.35	0.83	0.12	-0.82	MWD
13280.00	90.10	87.30	5791.82	221.74	7093.91	7097.35	1.03	-0.51	-0.90	MWD
13350.00	90.10	87.30	5791.70	225.04	7163.83	7167.34	0.00	0.00	0.00	PROJECTED to TD