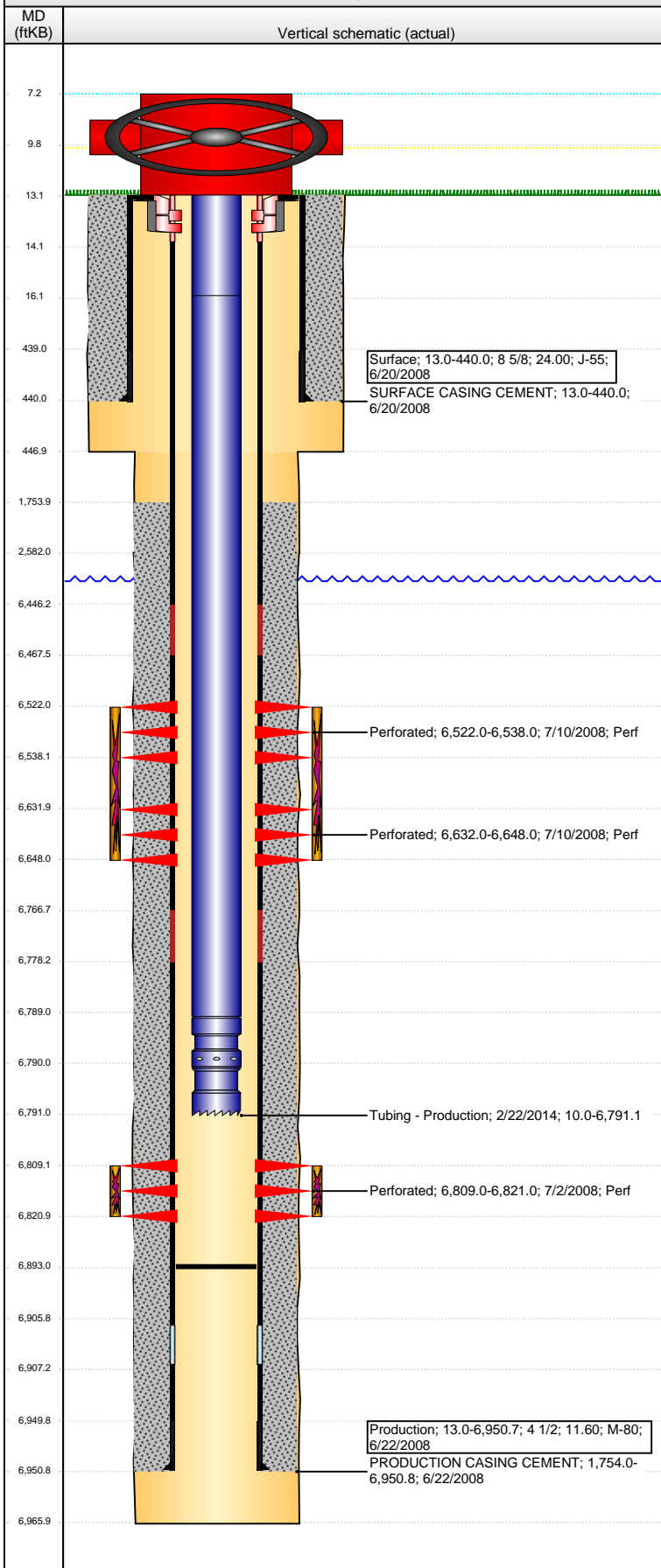


Well Name: SCHOLFIELD A36-19

VERTICAL - ORIGINAL HOLE, 3/18/2015 10:09:06 AM



Well Header

API 05-123-25768	Business Unit DJ BASIN	District 15	Well Config VERTICAL
Original KB Elevation (ft) 4,640.00	KB - GL / MSL (ftKB) 13.00	Spud Date 6/20/2008	P & A Date
Comment			

Directions To Well

RD 59 & RD 64 EAST 1/10 SOUTHEAST 3/10 WEST INTO

Congressional Location

Quarter 1	Quarter 2	Quarter 3	Quarter 4	Section	Township	Twnshp N...	Range	Rng E/W Dir
		NW	NW	36	6	N	64	W

Bottom Hole Location

North-South Distance (ft)	From N or S Line	East-West Distance (ft)	From E or W Line

Plug Back Total Depths

Date	Depth (ftKB)	Method	Com
6/22/2008	6,893.0	CASING TALLY	

Wellbore Sections

Section Des	Size (in)	Act Top, MD (ftKB)	Act Btm, MD (ftKB)
SURFACE	12 1/4	13.0	447.0
SURFACE	12 1/4	447.0	447.0
PRODUCTION	7 7/8	447.0	447.0
PRODUCTION	7 7/8	447.0	2,582.0
PRODUCTION	7 7/8	2,582.0	6,966.0
PRODUCTION	7 7/8	6,966.0	6,966.0

Zone Statuses

Zone Name	Status Date	Status	Job
NIOBRARA	7/12/2008	PR	DRILLING/COMPLETION - ORIGINAL, 6/20/2008 18:45
CODELL	7/12/2008	PR	DRILLING/COMPLETION - ORIGINAL, 6/20/2008 18:45

Casing Strings

Surface, 440.0ftKB

Casing Description	Run Date	OD (in)	Wt/Len (l...)	Grade	Top, MD (ft...)	MD (ftKB)
Surface	6/20/2008	8 5/8	24.00	J-55	13.0	440.0

Production, 6,950.8ftKB

Casing Description	Run Date	OD (in)	Wt/Len (l...)	Grade	Top, MD (ft...)	MD (ftKB)
Production	6/22/2008	4 1/2	11.60	M-80	13.0	6,950.8

Cement

Description	Top Depth (ftKB)	Bottom Depth (ftKB)
SURFACE CASING CEMENT	13.0	440.0
Description	Top Depth (ftKB)	Bottom Depth (ftKB)
PRODUCTION CASING CEMENT	1,754.0	6,950.8

Tubing Strings

Tubing Description	Run Date	String...	ID (in)	Wt (lb/ft)	Grade	Len (ft)	Set De...
Tubing - Production	9/17/2008	2 3/8	1.995	4.70	J-55	6,786.30	
Tubing Description	Run Date	String...	ID (in)	Wt (lb/ft)	Grade	Len (ft)	Set De...
Tubing - Production	2/22/2014	2 3/8	1.995	4.70	J-55	6,781.11	

Tubing Components

Item Des	OD (in)	Wt (lb/ft)	Grade	Jts	Len (ft)	Btm (ftKB)	Btm (TVD) (ftKB)
EUE 8rd Tubing	2 3/8	4.70	J-55	1	6.00	16.0	
EUE 8rd Tubing	2 3/8	4.70	J-55	218	6,773.11	6,789.1	
Seal Nipple	2 3/8			1	1.00	6,790.1	
Notched collar	2 3/8			1	1.00	6,791.1	

Perforation Data

Zone	Bnch/St g	Entered Shot Total	Top (ftKB)	Btm (ftKB)	Date
NIOBRARA, ORIGINAL HOLE	A	64	6,522.00	6,538.00	7/10/2008
NIOBRARA, ORIGINAL HOLE	B	64	6,632.00	6,648.00	7/10/2008
CODELL, ORIGINAL HOLE		48	6,809.00	6,821.00	7/2/2008

Well Name: SCHOLFIELD A36-19

VERTICAL - ORIGINAL HOLE, 3/18/2015 10:09:08 AM

Stimulations & Treatments

Date	Zone	Primary Job Type
7/10/2008	CODELL, ORIGINAL HOLE	DRILLING/COMPLETION - ORIGINAL

Technical Result	Tech Result Details	Tech Result Note
Success	According to Plan	

Comment
CODELL: REVERSE STEP RATE RESULTS 13 PO NWB 446 PSI WB 266 PSI PPF 218 PSI FOR A TOTAL OF 930 PSI OF FRICTION 5 MINUTE OF 2182 BROUGHT RATE UP TO 22 BPM LOST COMMUNICATION WITH THE GELLING UNIT RATES WERE FLAT LINED TREATMENT WENT WELL POST JOB 5 MINUTE OF 3435 PSI AVG VISC 27.9 CPS AVG TEMP 71.8F AVG PH 10.26

Date	Zone	Primary Job Type
7/10/2008	NIOBRARA, ORIGINAL HOLE	DRILLING/COMPLETION - ORIGINAL

Technical Result	Tech Result Details	Tech Result Note
Success	According to Plan	

Comment
NIOBRARA: TREATMENT WENT WELL HAD A PUMP OVER HEAT AND COME OFF LINE POST JOB 5 MINUTE OF 3369 PSI AVG VISC 23.9 CPS AVG TEMP 73F AVG PH 10.13

Other In Hole

Run Date	Des	OD (in)	Top (ftKB)	Btm (ftKB)

Logs

Date	Type	Top, MD (ftKB)	Btm, MD (ftKB)
6/27/2008	CBL/CCL/GR	1,476.0	6,880.0
10/21/2010	GYRO	0.0	6,780.0

