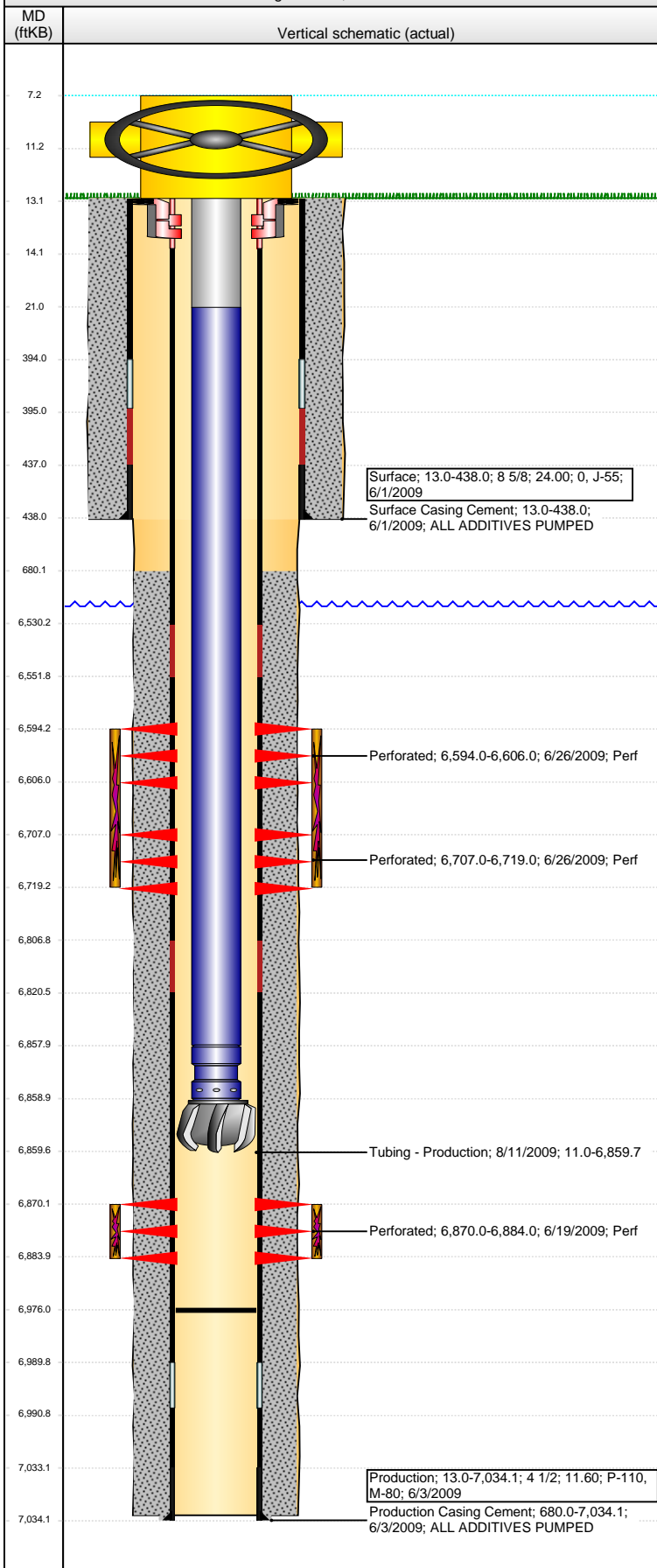


Well Name: SCHOLFIELD STATE A36-04X

VERTICAL - Original Hole, 3/17/2015 10:21:41 AM



Well Header

API 05-123-30044	Business Unit DJ BASIN	District 15	Well Config VERTICAL
Original KB Elevation (ft) 4,642.00	KB - GL / MSL (ftKB) 13.00	Spud Date 6/1/2009	P & A Date

Comment

Directions To Well

WCR 64 & WCR 59: GO SOUTH 2/10THS OF A MILE, THEN EAST 1/10TH, THEN NORTH INTO LOCATION

Congressional Location

Quarter 1	Quarter 2	Quarter 3	Quarter 4	Section	Township	Twnshp N...	Range	Rng E/W Dir
		NW	NW	36	6	N	64	W

Bottom Hole Location

North-South Distance (ft)	From N or S Line	East-West Distance (ft)	From E or W Line
---------------------------	------------------	-------------------------	------------------

Plug Back Total Depths

Date	Depth (ftKB)	Method	Com
6/4/2009	6,990.7	CASING TALLY	
6/16/2009	6,988.0	CASED HOLE LOG	
8/11/2009	6,976.0	TUBING TALLY	DRILL CIFTF W/ CUTRITE BIT AND N2, CHASE D...

Wellbore Sections

Section Des	Size (in)	Act Top, MD (ftKB)	Act Btm, MD (ftKB)
SURFACE	12 1/4	13.0	438.0
PRODUCTION	7 7/8	438.0	7,034.0

Zone Statuses

Zone Name	Status Date	Status	Job
NIOBRARA	6/28/2009	PR	DRILLING/COMPLETION - ORIGINAL, 5/31/2009 23:30
CODELL	6/28/2009	PR	DRILLING/COMPLETION - ORIGINAL, 5/31/2009 23:30

Casing Strings

Surface, 438.0ftKB

Casing Description	Run Date	OD (in)	Wt/Len (l...)	Grade	Top, MD (ft...)	MD (ftKB)
Surface	6/1/2009	8 5/8	24.00	J-55	13.0	438.0

Production, 7,034.1ftKB

Casing Description	Run Date	OD (in)	Wt/Len (l...)	Grade	Top, MD (ft...)	MD (ftKB)
Production	6/3/2009	4 1/2	11.60	M-80	13.0	7,034.1

Cement

Description	Top Depth (ftKB)	Bottom Depth (ftKB)
Surface Casing Cement	13.0	438.0
Description	Top Depth (ftKB)	Bottom Depth (ftKB)
Production Casing Cement	680.0	7,034.1

Tubing Strings

Tubing Description	Run Date	String...	ID (in)	Wt (lb/ft)	Grade	Len (ft)	Set De...
Tubing - Production	8/11/2009	2 3/8	1.995	4.70	J-55	6,848.71	6,858.8

Tubing Components

Item Des	OD (in)	Wt (lb/ft)	Grade	Jts	Len (ft)	Btm (ftKB)	Btm (TVD) (ftKB)
Tubing Pup Joint	2 3/8	4.70	J-55	1	10.00	21.0	
Tubing	2 3/8	4.70	J-55	221	6,836.84	6,857.8	
Pump Seating Nipple	2 3/8			1	1.10	6,858.9	6,858.0
Cutrite Blade Bit	3 7/8			1	0.77	6,859.7	6,858.8

Perforation Data

Zone	Bnch/St g	Entered Shot Total	Top (ftKB)	Btm (ftKB)	Date
NIOBRARA, Original Hole	A	24	6,594.00	6,606.00	6/26/2009
NIOBRARA, Original Hole	B	24	6,707.00	6,719.00	6/26/2009
CODELL, Original Hole		56	6,870.00	6,884.00	6/19/2009

Stimulations & Treatments

Date	Zone	Primary Job Type
6/26/2009	CODELL, Original Hole	DRILLING/COMPLETION - ORIGINAL
Technical Result	Tech Result Details	Tech Result Note
Success	According to Plan	

Comment

(CODELL): REVERSE STEP RATE RESULTS PO 29 NWB 267 PSI WB 295 PSI PPF 40 PSI FOR TOTAL OF 602 PSI. TREATMENT WENT WELL. AVG VISC 28.3 CPS AVG TEMP 74.7F AVG PH 10.08. POST JOB 5 MINUTE OF 3778 PSI.

Well Name: SCHOLFIELD STATE A36-04X

VERTICAL - Original Hole, 3/17/2015 10:21:44 AM

Stimulations & Treatments

Date 6/26/2009	Zone NIOBRARA, Original Hole	Primary Job Type DRILLING/COMPLETION - ORIGINAL
Technical Result Success	Tech Result Details According to Plan	Tech Result Note
Comment (NIOBRARA): HAD ISSUES WITH HIGH PRESSURE AT BEGINING OF THE JOB. THINK IT MAY BE FLUID RELATED. AVG VISC 23.6 CPS AVG TEMP 75.2F AVG PH 10.1. POST JOB 5 MINUTE OF 3525 PSI.		

Other In Hole

Run Date	Des	OD (in)	Top (ftKB)	Btm (ftKB)

Logs

Date	Type	Top, MD (ftKB)	Btm, MD (ftKB)
6/3/2009	Caliper/Comp. Density/Neutron/GR/SP/ML	2,550.0	7,048.0
6/3/2009	DIL/GR/SP/Caliper	438.0	7,048.0
6/16/2009	CBL/CCL/GR	545.0	6,987.0
9/29/2010	GYRO	0.0	6,800.0

