



Chevron
U.S.A., Inc.

WELL NO.: GRAY A-10
(2615)
FIELD : RANGELY, CO.

SURVEY DATA

RUN NO. 51

SURVEY TYPE : T-S-T
DATE : 12/23/2014
METERED RATE : 2800 B/D
MEASURED RATE: 2375 B/D
DESIRED RATE : N/A
SERVICE CO. : PLS

SURFACE TEMP : 91.1 F
BHT : N/A
TBG PRESSURE : 1200 PSI
CSG PRESSURE : 0 PSI
PICK-UP : 5950' GDA
INJ. FLUID : H2O

REMARKS

R/A TRACER INDICATES TOP PERF, PACKERS AND CASING SHOE ARE OK.

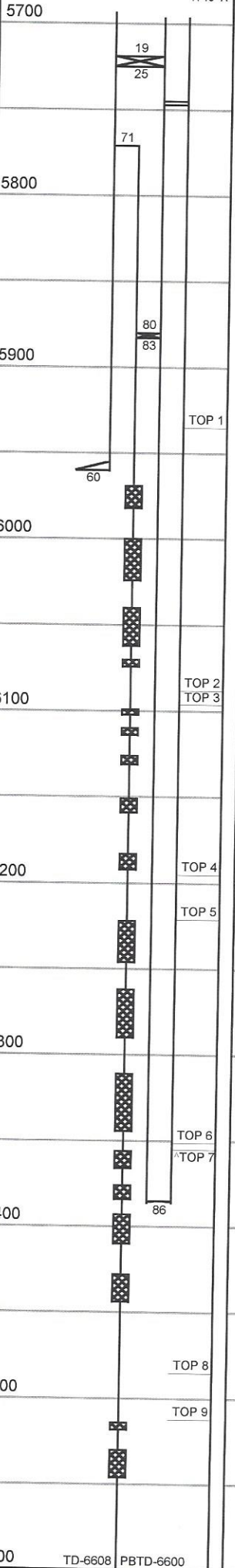
RECORDED BY: MATT STRATTON

11/11/14, RAN 1.75" G/R TO 6067'; TIGHT SPOT @5980'.

INJECTION PROFILE

MECHANICAL INFORMATION

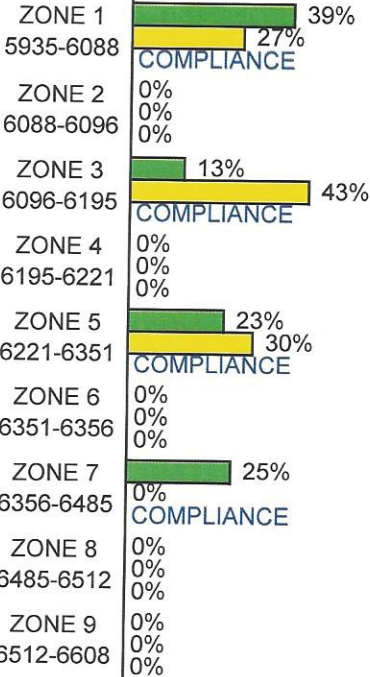
7" 23# CASING 0-5960'
5" 18# LINER 5771'-6608'
P.B.T.D. 6600'
2-7/8" F.L. TUBING 0-5719'
TOP PACKER 5719'-5725'
ON/OFF TOOL 1.875" "F" 5745'-5747'
PACKER 5880'-5883'
2-3/8" STAR F.G. TUBING 5883'-6385'
MULE SHOE 6386'
H-13 "A"



COMPLIANCE

NOTE: PUT OUT LARGE SLUG OF RADIOACTIVE TRACER @ 5950' WAITED 15 MINUTES WITH NO SIGN OF FLUID MOVING UPHOLE. ALSO PERFORMED PACKER CHECK.

PERCENTAGE INJECTED INTO ZONE



Run #49: 5/17/2000

Run #50: 4/12/2002

Run #51: 12/23/2014

TEMPERATURES (F°)

DATE	RUN #49 5/17/2000	RUN #50 4/12/2002	RUN #51 12/23/2014
SURFACE	100.6	93.7	91.1
5935-6088	---	---	---
GDA (5950)	105.4	130.4	N/A
6088-6096	---	---	---
6096-6195	---	---	---
6195-6221	---	---	---
6221-6351	---	---	---
6351-6356	---	---	---
6356-6485	---	---	---
6485-6512	---	---	---
6512-6608	---	---	---
RATE (B/D)	2100	3200	2375
PRESS (PSI)	1050	1800	1200