

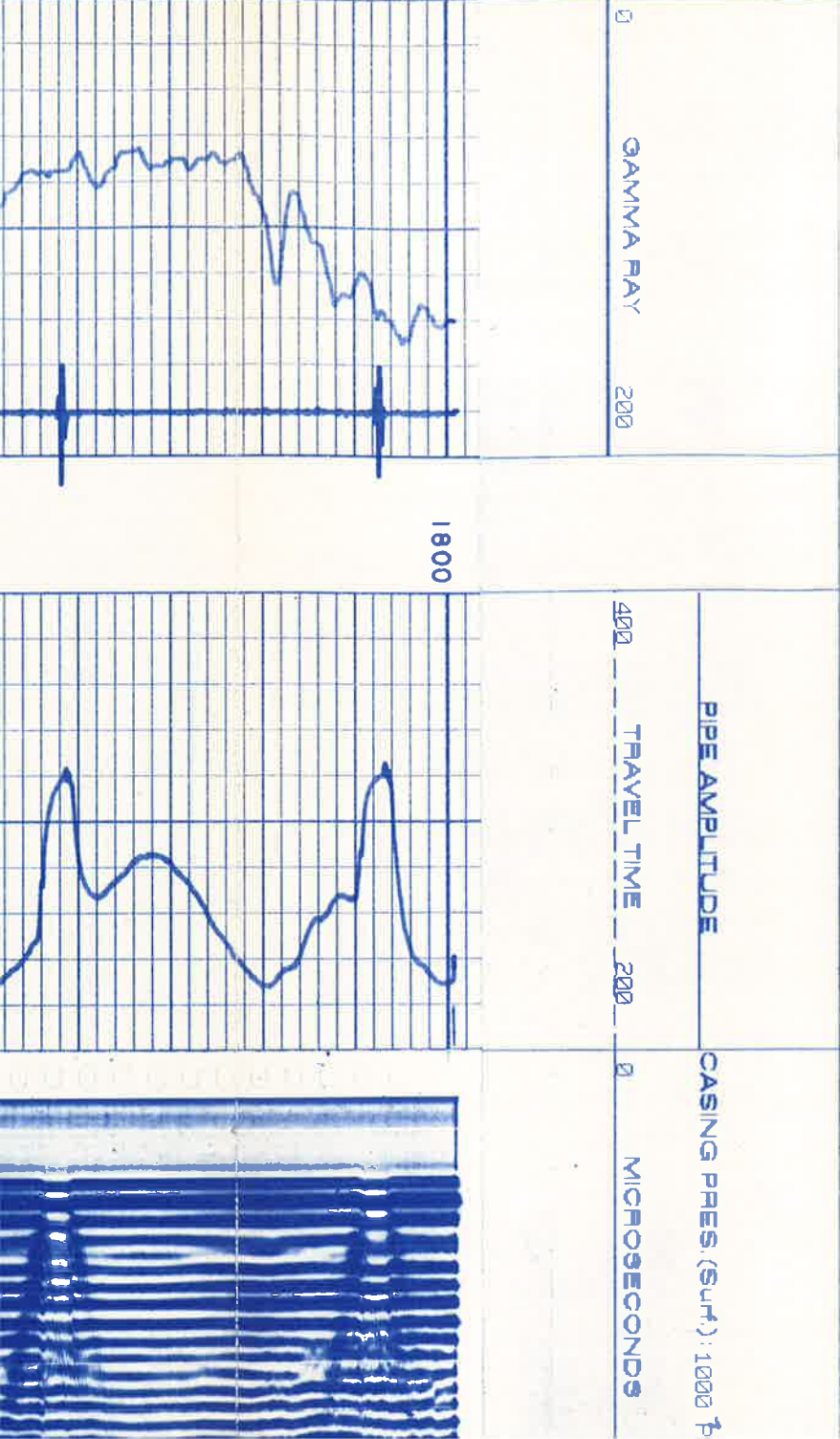
RUN		ONE	BORE HOLE RECORD		Type Log: CBL/GR/CCL		Run No.: ONE		Date: 11/7/92		Total Depth Driller: 3277'		Present Depth Driller: 3277'		Total Depth RMWS: 3229'		Survey Begins: 3222'		Survey Ends: 1800'		Truck No: 203		Location: G.J.		Type Fluid in Hole: WATER		Weight lb/gal: N/A		Fluid Level: FULL		Max. Hole Temp.: N/A		Recorded By: CHEPKO/MCBROOM		Witnessed By: MR. NAICO			
BIT		7.875"	FROM		SURFACE		3277'																															
SIZE		8.625"	WT.		N/A		11.6#																															
FROM		SURFACE		467'		T.D.																																

CEMENT BOND LOG		Other Logs		NONE		STATE: CO		LOCATION: NM/4, NM/4		715' FNL AND 1062' FUL.		TWP. 9S		ELEV.: 5361'		Above Perm Datum 11.0'		Log Measured From: K.B.		Drilling Measured From: K.B.		PERMANENT DATUM: G.L.		SEC. 20		RGE. 97W		KB. 5372'		DF. 5371'		GL. 5361'	
-----------------	--	------------	--	------	--	-----------	--	----------------------	--	-------------------------	--	---------	--	--------------	--	------------------------	--	-------------------------	--	------------------------------	--	-----------------------	--	---------	--	----------	--	-----------	--	-----------	--	-----------	--

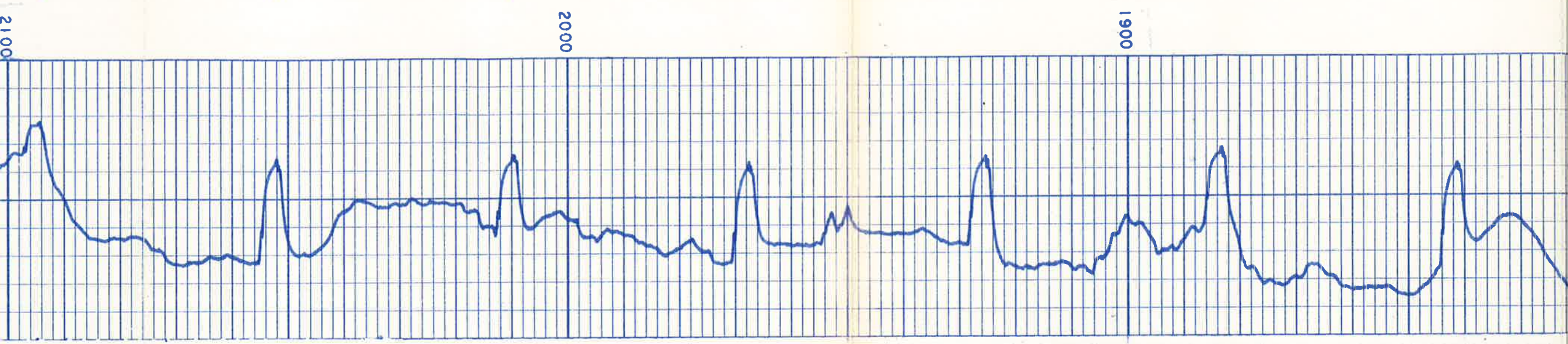
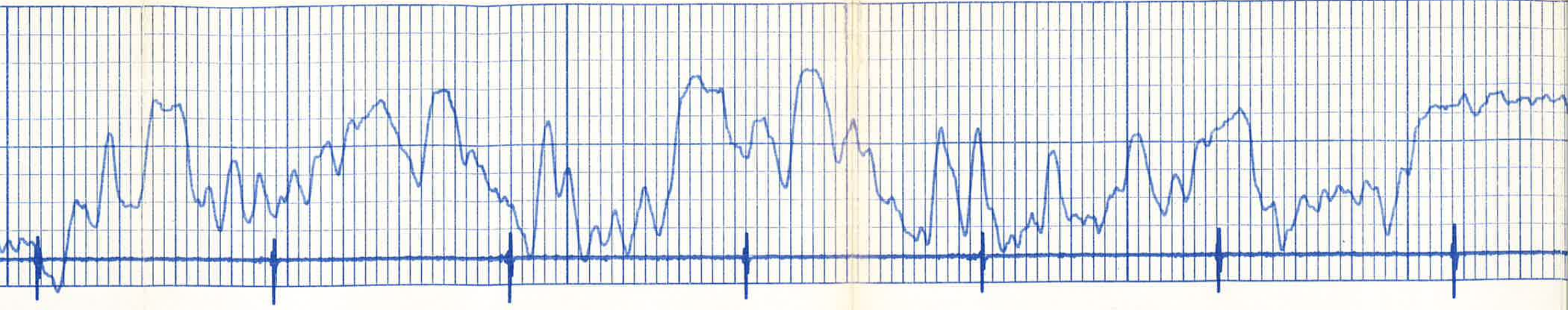
EQUIPMENT DATA

TRUCK NO: 203  
C.B.T. S/N: 90077  
GAMMA TOOL S/N: 50032  
OTHER: KOCH420H

REMARKS:





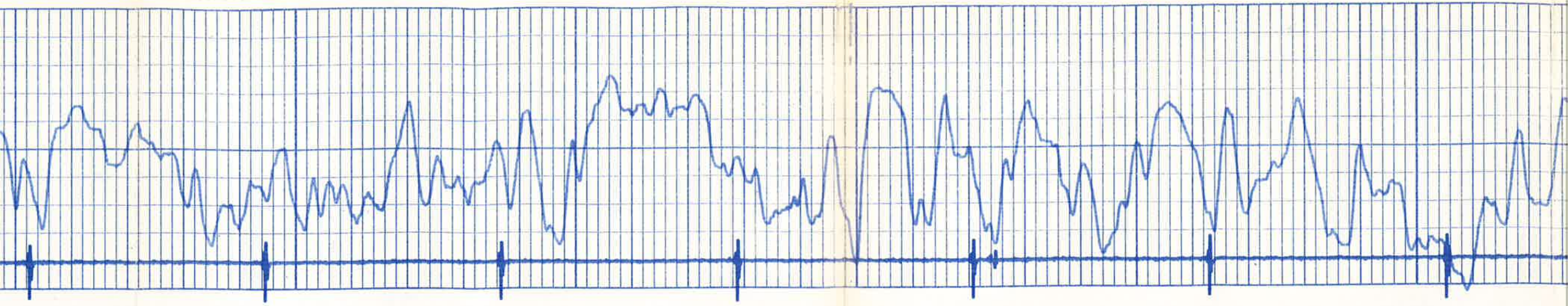


2100

2000

1900





2300

2200

2100

