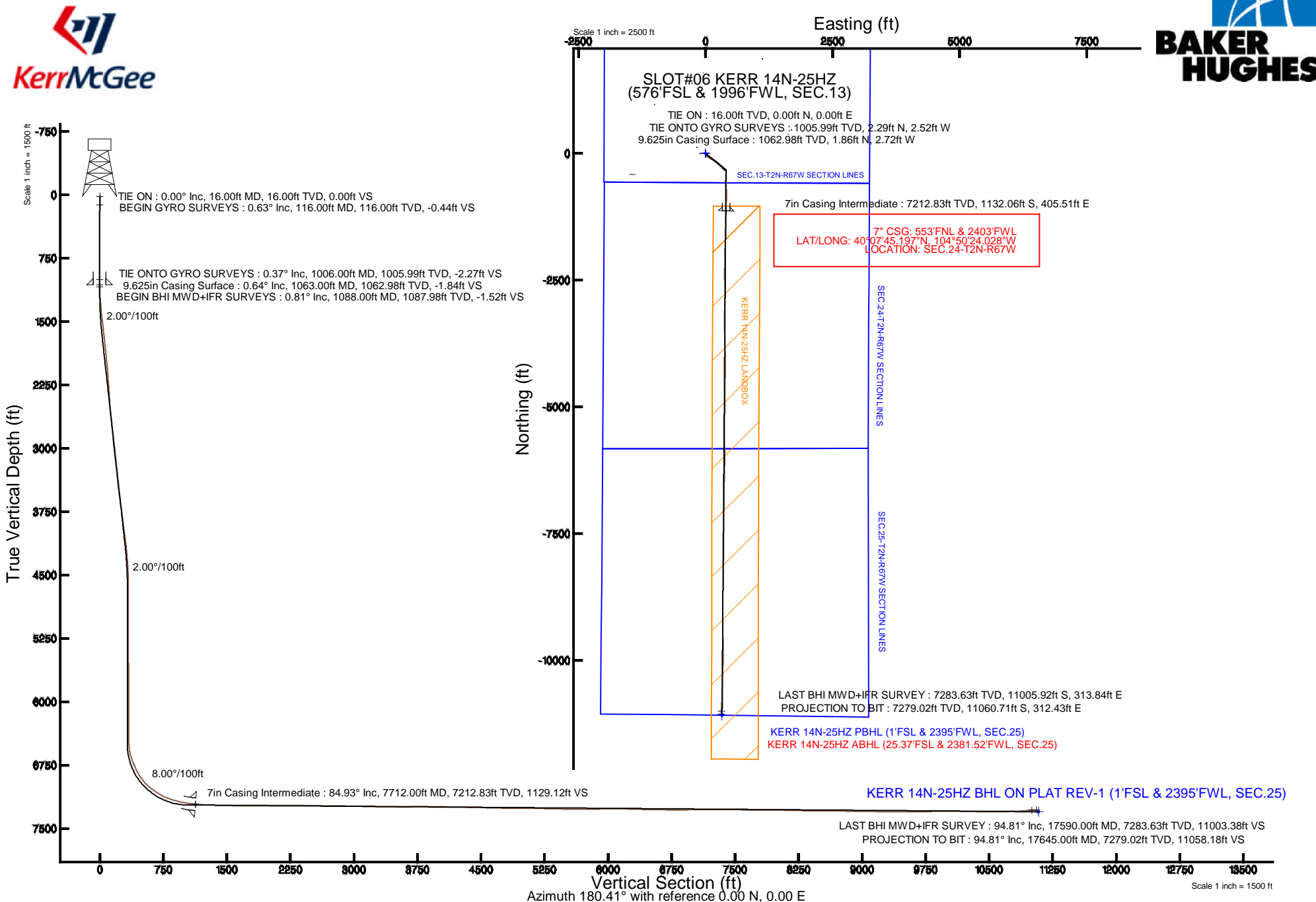


KERR-MCGEE OIL & GAS ONSHORE LP (LAMBERT STATE PLANE COORD)

Location: COLORADO Slot: SLOT#06 KERR 14N-25HZ (576'FSL & 1996'FWL, SEC.13)
 Field: WELD COUNTY (KERR MCGEE) Well: KERR 14N-25HZ
 Facility: SEC.13-T2N-R67W Wellbore: KERR 14N-25HZ PWB

Plot reference wellpath is KERR 14N-25HZ (REV-A.0) PWP

True vertical depths are referenced to XTREME 24 (16'KB) (RKB)	Grid System: NAD83 / Lambert Colorado SP, Northern Zone (501), US feet
Measured depths are referenced to XTREME 24 (16'KB) (RKB)	North Reference: True north
XTREME 24 (16'KB) (RKB) to Mean Sea Level: 4899 feet	Scale: True distance
Mean Sea Level to Mud line (At Slot: SLOT#06 KERR 14N-25HZ (576'FSL & 1996'FWL, SEC.13)): 0 feet	Depths are in feet
Coordinates are in feet referenced to Slot	Created by: robiale01 on 1/20/2015



REFERENCE WELLPATH IDENTIFICATION

Operator	KERR-MCGEE OIL & GAS ONSHORE LP (LAMBERT STATE PLANE COORD)	Slot	SLOT#06 KERR 14N-25HZ (576'FSL & 1996'FWL, SEC.13)
Area	COLORADO	Well	KERR 14N-25HZ
Field	WELD COUNTY (KERR MCGEE)	Wellbore	KERR 14N-25HZ AWB <116-17645>
Facility	SEC.13-T2N-R67W		

REPORT SETUP INFORMATION

Projection System	NAD83 / Lambert Colorado SP, Northern Zone (501), US feet	Software System	WellArchitect® 4.0.0
North Reference	True	User	Robiale01
Scale	0.999959	Report Generated	1/20/2015 at 9:39:41 AM
Convergence at slot	n/a	Database/Source file	WellArchitectDB/KERR_14N-25HZ_AWB_116-17645_.xml

WELLPATH LOCATION

	Local coordinates		Grid coordinates		Geographic coordinates	
	North[ft]	East[ft]	Easting[US ft]	Northing[US ft]	Latitude	Longitude
Slot Location	-375.57	-1643.63	3184133.21	1291734.87	40°07'56.384"N	104°50'29.249"W
Facility Reference Pt			3185773.91	1292122.74	40°08'00.096"N	104°50'08.088"W
Field Reference Pt			3197771.84	1268891.29	40°04'09.600"N	104°47'36.000"W

WELLPATH DATUM

Calculation method	Minimum curvature	XTREME 24 (16'KB) (RKB) to Facility Vertical Datum	4899.00ft
Horizontal Reference Pt	Slot	XTREME 24 (16'KB) (RKB) to Mean Sea Level	4899.00ft
Vertical Reference Pt	XTREME 24 (16'KB) (RKB)	XTREME 24 (16'KB) (RKB) to Mud Line at Slot (SLOT#06 KERR 14N-25HZ (576'FSL & 1996'FWL, SEC.13))	4899.00ft
MD Reference Pt	XTREME 24 (16'KB) (RKB)	Section Origin	N 0.00, E 0.00 ft
Field Vertical Reference	Mean Sea Level	Section Azimuth	178.38°

REFERENCE WELLPATH IDENTIFICATION			
Operator	KERR-MCGEE OIL & GAS ONSHORE LP (LAMBERT STATE PLANE COORD)	Slot	SLOT#06 KERR 14N-25HZ (576'FSL & 1996'FWL, SEC.13)
Area	COLORADO	Well	KERR 14N-25HZ
Field	WELD COUNTY (KERR MCGEE)	Wellbore	KERR 14N-25HZ AWB <116-17645>
Facility	SEC.13-T2N-R67W		

WELLPATH DATA (158 stations) † = interpolated/extrapolated station										
MD [ft]	Inclination [°]	Azimuth [°]	TVD [ft]	Vert Sect [ft]	North [ft]	East [ft]	Latitude	Longitude	DLS [°/100ft]	Comments
0.00†	0.000	323.264	0.00	0.00	0.00	0.00	40°07'56.384"N	104°50'29.249"W	0.00	
16.00	0.000	323.264	16.00	0.00	0.00	0.00	40°07'56.384"N	104°50'29.249"W	0.00	TIE ON
116.00	0.631	323.264	116.00	-0.45	0.44	-0.33	40°07'56.388"N	104°50'29.253"W	0.63	BEGIN GYRO SURVEYS
216.00	0.467	302.113	215.99	-1.13	1.10	-1.00	40°07'56.395"N	104°50'29.262"W	0.26	
316.00	0.329	294.817	315.99	-1.48	1.44	-1.61	40°07'56.398"N	104°50'29.270"W	0.15	
416.00	0.116	325.909	415.99	-1.69	1.64	-1.93	40°07'56.400"N	104°50'29.274"W	0.24	
516.00	0.223	44.961	515.99	-1.91	1.86	-1.85	40°07'56.402"N	104°50'29.273"W	0.23	
616.00	0.309	40.175	615.99	-2.25	2.21	-1.53	40°07'56.406"N	104°50'29.269"W	0.09	
716.00	0.156	306.113	715.99	-2.53	2.49	-1.47	40°07'56.409"N	104°50'29.268"W	0.36	
816.00	0.143	320.008	815.99	-2.71	2.67	-1.66	40°07'56.410"N	104°50'29.270"W	0.04	
916.00	0.378	242.823	915.99	-2.67	2.61	-2.03	40°07'56.410"N	104°50'29.275"W	0.37	
1006.00	0.369	230.200	1005.99	-2.36	2.29	-2.52	40°07'56.407"N	104°50'29.281"W	0.09	TIE ONTO GYRO SURVEYS
1088.00	0.810	183.040	1087.98	-1.62	1.54	-2.75	40°07'56.399"N	104°50'29.284"W	0.76	BEGIN BHI MWD+IFR SURVEYS
1182.00	3.370	164.600	1181.91	1.72	-1.78	-2.06	40°07'56.366"N	104°50'29.275"W	2.78	
1276.00	4.270	174.080	1275.70	7.90	-7.93	-0.96	40°07'56.306"N	104°50'29.261"W	1.17	
1370.00	5.740	163.650	1369.34	15.93	-15.92	0.72	40°07'56.227"N	104°50'29.240"W	1.83	
1464.00	7.460	155.990	1462.72	26.12	-26.01	4.53	40°07'56.127"N	104°50'29.191"W	2.05	
1558.00	7.920	147.790	1555.88	37.34	-37.06	10.46	40°07'56.018"N	104°50'29.114"W	1.26	
1653.00	9.340	135.920	1649.81	48.66	-48.14	19.32	40°07'55.908"N	104°50'29.000"W	2.39	
1747.00	9.510	126.490	1742.54	59.08	-58.24	30.87	40°07'55.809"N	104°50'28.852"W	1.65	
1841.00	9.880	129.710	1835.20	69.20	-68.01	43.31	40°07'55.712"N	104°50'28.691"W	0.70	
1935.00	10.900	118.300	1927.67	78.96	-77.37	57.35	40°07'55.619"N	104°50'28.511"W	2.44	
2030.00	10.520	118.400	2021.01	87.78	-85.76	72.88	40°07'55.537"N	104°50'28.311"W	0.40	
2122.00	10.090	117.250	2111.53	95.87	-93.44	87.43	40°07'55.461"N	104°50'28.123"W	0.52	
2214.00	9.570	116.120	2202.18	103.32	-100.50	101.47	40°07'55.391"N	104°50'27.943"W	0.60	
2304.00	9.390	115.560	2290.95	110.16	-106.96	114.81	40°07'55.327"N	104°50'27.771"W	0.22	
2395.00	9.900	108.110	2380.67	116.19	-112.59	128.94	40°07'55.271"N	104°50'27.589"W	1.48	
2488.00	10.220	116.790	2472.24	122.81	-118.80	143.90	40°07'55.210"N	104°50'27.396"W	1.66	
2580.00	10.160	125.160	2562.79	131.56	-127.15	157.82	40°07'55.127"N	104°50'27.217"W	1.61	
2671.00	9.890	125.650	2652.40	141.09	-136.33	170.74	40°07'55.037"N	104°50'27.051"W	0.31	
2764.00	9.570	125.030	2744.07	150.54	-145.42	183.56	40°07'54.947"N	104°50'26.886"W	0.36	
2855.00	9.450	124.640	2833.82	159.48	-154.01	195.90	40°07'54.862"N	104°50'26.727"W	0.15	
2947.00	9.420	122.820	2924.57	168.20	-162.38	208.44	40°07'54.779"N	104°50'26.565"W	0.33	
3039.00	9.470	131.360	3015.33	177.62	-171.46	220.45	40°07'54.690"N	104°50'26.411"W	1.52	
3131.00	9.910	132.540	3106.02	188.29	-181.82	231.96	40°07'54.587"N	104°50'26.263"W	0.52	
3223.00	9.890	131.960	3196.65	199.26	-192.45	243.67	40°07'54.482"N	104°50'26.112"W	0.11	
3314.00	9.570	130.590	3286.34	209.72	-202.60	255.22	40°07'54.382"N	104°50'25.963"W	0.43	
3405.00	8.890	130.730	3376.16	219.54	-212.11	266.30	40°07'54.288"N	104°50'25.821"W	0.75	
3497.00	9.500	140.900	3466.98	230.36	-222.64	276.47	40°07'54.184"N	104°50'25.690"W	1.88	
3589.00	9.840	137.740	3557.68	242.35	-234.35	286.55	40°07'54.068"N	104°50'25.560"W	0.69	
3682.00	11.330	137.190	3649.09	255.25	-246.93	298.10	40°07'53.944"N	104°50'25.411"W	1.61	
3775.00	10.330	137.050	3740.43	268.39	-259.74	309.99	40°07'53.817"N	104°50'25.258"W	1.08	
3868.00	9.870	137.380	3831.99	280.66	-271.71	321.07	40°07'53.699"N	104°50'25.115"W	0.50	
3961.00	9.420	139.480	3923.68	292.60	-283.36	331.41	40°07'53.584"N	104°50'24.982"W	0.61	
4054.00	9.080	138.600	4015.47	304.17	-294.65	341.21	40°07'53.472"N	104°50'24.856"W	0.40	

REFERENCE WELLPATH IDENTIFICATION			
Operator	KERR-MCGEE OIL & GAS ONSHORE LP (LAMBERT STATE PLANE COORD)	Slot	SLOT#06 KERR 14N-25HZ (576'FSL & 1996'FWL, SEC.13)
Area	COLORADO	Well	KERR 14N-25HZ
Field	WELD COUNTY (KERR MCGEE)	Wellbore	KERR 14N-25HZ AWB <116-17645>
Facility	SEC.13-T2N-R67W		

WELLPATH DATA (158 stations) † = interpolated/extrapolated station										
MD [ft]	Inclination [°]	Azimuth [°]	TVD [ft]	Vert Sect [ft]	North [ft]	East [ft]	Latitude	Longitude	DLS [°/100ft]	Comments
4147.00	8.840	139.570	4107.33	315.37	-305.59	350.70	40°07'53.364"N	104°50'24.734"W	0.30	
4240.00	8.840	138.930	4199.23	326.46	-316.42	360.03	40°07'53.257"N	104°50'24.614"W	0.11	
4333.00	7.830	121.680	4291.26	335.46	-325.14	370.11	40°07'53.171"N	104°50'24.484"W	2.89	
4426.00	7.670	120.900	4383.41	342.27	-331.65	380.83	40°07'53.107"N	104°50'24.346"W	0.21	
4519.00	5.330	117.690	4475.81	347.72	-336.84	389.98	40°07'53.055"N	104°50'24.228"W	2.55	
4613.00	3.290	105.740	4569.54	350.66	-339.61	396.44	40°07'53.028"N	104°50'24.145"W	2.36	
4706.00	0.930	79.230	4662.47	351.34	-340.19	399.75	40°07'53.022"N	104°50'24.102"W	2.68	
4795.00	0.870	75.830	4751.46	351.08	-339.89	401.12	40°07'53.025"N	104°50'24.085"W	0.09	
4973.00	0.960	81.990	4929.43	350.62	-339.35	403.91	40°07'53.030"N	104°50'24.049"W	0.07	
5151.00	0.920	96.280	5107.41	350.65	-339.30	406.80	40°07'53.031"N	104°50'24.012"W	0.13	
5328.00	0.810	253.460	5284.40	351.17	-339.81	407.02	40°07'53.026"N	104°50'24.009"W	0.96	
5505.00	0.890	242.500	5461.38	352.09	-340.80	404.60	40°07'53.016"N	104°50'24.040"W	0.10	
5772.00	0.550	201.940	5728.36	354.17	-342.95	402.28	40°07'52.995"N	104°50'24.070"W	0.22	
6036.00	0.380	288.960	5992.36	355.02	-343.84	400.98	40°07'52.986"N	104°50'24.087"W	0.25	
6292.00	0.580	93.460	6248.35	354.84	-343.64	401.47	40°07'52.988"N	104°50'24.080"W	0.37	
6460.00	0.220	191.850	6416.35	355.23	-344.01	402.25	40°07'52.984"N	104°50'24.070"W	0.39	
6545.00	2.530	184.320	6501.32	357.25	-346.04	402.08	40°07'52.964"N	104°50'24.073"W	2.72	
6630.00	10.570	180.200	6585.70	366.93	-355.72	401.91	40°07'52.869"N	104°50'24.075"W	9.47	
6716.00	18.870	179.790	6668.80	388.75	-377.55	401.93	40°07'52.653"N	104°50'24.074"W	9.65	
6800.00	23.100	181.640	6747.21	418.80	-407.62	401.51	40°07'52.356"N	104°50'24.080"W	5.10	
6885.00	27.210	179.800	6824.14	454.89	-443.74	401.10	40°07'51.999"N	104°50'24.085"W	4.92	
6970.00	33.960	179.760	6897.27	498.10	-486.96	401.27	40°07'51.572"N	104°50'24.083"W	7.94	
7056.00	43.780	179.610	6964.15	551.99	-540.87	401.57	40°07'51.039"N	104°50'24.079"W	11.42	
7141.00	51.460	175.510	7021.41	614.70	-603.52	404.38	40°07'50.420"N	104°50'24.043"W	9.71	
7226.00	56.310	177.400	7071.50	683.30	-672.03	408.59	40°07'49.743"N	104°50'23.989"W	5.98	
7311.00	63.790	179.030	7113.90	756.89	-745.59	410.84	40°07'49.016"N	104°50'23.960"W	8.96	
7396.00	69.940	180.970	7147.29	834.98	-823.71	410.81	40°07'48.244"N	104°50'23.960"W	7.53	
7482.00	76.040	179.920	7172.43	917.13	-905.91	410.18	40°07'47.432"N	104°50'23.968"W	7.19	
7569.00	78.970	180.940	7191.26	1002.00	-990.83	409.54	40°07'46.592"N	104°50'23.977"W	3.56	
7653.00	80.930	181.660	7205.91	1084.60	-1073.52	407.66	40°07'45.775"N	104°50'24.001"W	2.48	
7672.00	82.890	182.070	7208.59	1103.38	-1092.32	407.05	40°07'45.590"N	104°50'24.009"W	10.53	
7712.00†	84.930	182.364	7212.83	1143.06	-1132.06	405.51	40°07'45.197"N	104°50'24.028"W	5.15	7" CASING POINT
7732.00	85.950	182.510	7214.42	1162.95	-1151.98	404.66	40°07'45.000"N	104°50'24.039"W	5.15	
7818.00	87.620	182.020	7219.24	1248.61	-1237.77	401.27	40°07'44.152"N	104°50'24.083"W	2.02	
7903.00	88.120	181.510	7222.40	1333.40	-1322.67	398.66	40°07'43.313"N	104°50'24.117"W	0.84	
8073.00	88.760	181.880	7227.03	1503.05	-1492.54	393.63	40°07'41.635"N	104°50'24.182"W	0.43	
8243.00	89.100	181.220	7230.21	1672.76	-1662.44	389.03	40°07'39.956"N	104°50'24.241"W	0.44	
8413.00	90.360	180.920	7231.01	1842.57	-1832.41	385.86	40°07'38.276"N	104°50'24.282"W	0.76	
8583.00	91.590	181.580	7228.11	2012.33	-2002.34	382.15	40°07'36.597"N	104°50'24.329"W	0.82	
8669.00	91.110	181.500	7226.09	2098.17	-2088.28	379.84	40°07'35.747"N	104°50'24.359"W	0.57	
8753.00	90.300	180.430	7225.05	2182.08	-2172.26	378.42	40°07'34.917"N	104°50'24.377"W	1.60	
8838.00	89.470	181.340	7225.23	2267.00	-2257.25	377.11	40°07'34.078"N	104°50'24.394"W	1.45	
9009.00	88.090	179.410	7228.87	2437.84	-2428.20	375.99	40°07'32.388"N	104°50'24.409"W	1.39	
9179.00	90.490	179.430	7230.97	2607.79	-2598.16	377.71	40°07'30.709"N	104°50'24.387"W	1.41	
9264.00	89.870	179.590	7230.71	2692.77	-2683.16	378.44	40°07'29.869"N	104°50'24.377"W	0.75	

REFERENCE WELLPATH IDENTIFICATION

Operator	KERR-MCGEE OIL & GAS ONSHORE LP (LAMBERT STATE PLANE COORD)	Slot	SLOT#06 KERR 14N-25HZ (576'FSL & 1996'FWL, SEC.13)
Area	COLORADO	Well	KERR 14N-25HZ
Field	WELD COUNTY (KERR MCGEE)	Wellbore	KERR 14N-25HZ AWB <116-17645>
Facility	SEC.13-T2N-R67W		

WELLPATH DATA (158 stations)

MD [ft]	Inclination [°]	Azimuth [°]	TVD [ft]	Vert Sect [ft]	North [ft]	East [ft]	Latitude	Longitude	DLS [°/100ft]	Comments
9349.00	89.530	179.640	7231.15	2777.75	-2768.15	379.01	40°07'29.029"N	104°50'24.370"W	0.40	
9434.00	88.760	179.390	7232.42	2862.73	-2853.14	379.73	40°07'28.189"N	104°50'24.361"W	0.95	
9519.00	88.790	180.960	7234.24	2947.66	-2938.12	379.47	40°07'27.349"N	104°50'24.364"W	1.85	
9690.00	88.020	180.980	7239.00	3118.42	-3109.03	376.58	40°07'25.660"N	104°50'24.401"W	0.45	
9860.00	90.490	180.820	7241.21	3288.23	-3278.98	373.91	40°07'23.981"N	104°50'24.436"W	1.46	
9945.00	89.380	180.070	7241.30	3373.17	-3363.97	373.25	40°07'23.141"N	104°50'24.444"W	1.58	
10030.00	88.700	178.430	7242.73	3458.15	-3448.95	374.36	40°07'22.301"N	104°50'24.430"W	2.09	
10214.00	90.430	178.310	7244.12	3642.13	-3632.86	379.59	40°07'20.484"N	104°50'24.363"W	0.94	
10395.00	90.770	179.480	7242.23	3823.11	-3813.82	383.08	40°07'18.695"N	104°50'24.318"W	0.67	
10487.00	89.870	178.450	7241.71	3915.10	-3905.80	384.74	40°07'17.786"N	104°50'24.296"W	1.49	
10579.00	89.590	179.680	7242.15	4007.10	-3997.78	386.25	40°07'16.877"N	104°50'24.277"W	1.37	
10671.00	88.920	180.180	7243.34	4099.05	-4089.77	386.36	40°07'15.968"N	104°50'24.276"W	0.91	
10763.00	88.420	180.360	7245.48	4190.98	-4181.75	385.93	40°07'15.059"N	104°50'24.281"W	0.58	
10855.00	88.820	179.960	7247.70	4282.91	-4273.72	385.67	40°07'14.151"N	104°50'24.285"W	0.61	
11039.00	88.880	180.580	7251.39	4466.77	-4457.68	384.80	40°07'12.333"N	104°50'24.296"W	0.34	
11222.00	88.360	179.940	7255.80	4649.62	-4640.62	383.97	40°07'10.525"N	104°50'24.306"W	0.45	
11405.00	88.790	181.100	7260.35	4832.43	-4823.56	382.31	40°07'08.717"N	104°50'24.328"W	0.68	
11588.00	90.400	181.190	7261.64	5015.20	-5006.51	378.65	40°07'06.909"N	104°50'24.375"W	0.88	
11681.00	89.590	181.110	7261.65	5108.10	-5099.49	376.79	40°07'05.990"N	104°50'24.399"W	0.88	
11867.00	88.510	180.640	7264.73	5293.89	-5285.44	373.95	40°07'04.153"N	104°50'24.436"W	0.63	
12053.00	89.070	180.270	7268.66	5479.73	-5471.39	372.47	40°07'02.315"N	104°50'24.455"W	0.36	
12240.00	89.660	179.150	7270.73	5666.66	-5658.37	373.42	40°07'00.467"N	104°50'24.443"W	0.68	
12426.00	91.070	177.960	7269.55	5852.65	-5844.30	378.11	40°06'58.630"N	104°50'24.382"W	0.99	
12519.00	90.580	179.470	7268.21	5945.63	-5937.27	380.19	40°06'57.711"N	104°50'24.355"W	1.71	
12612.00	90.460	180.740	7267.36	6038.59	-6030.26	380.02	40°06'56.792"N	104°50'24.358"W	1.37	
12705.00	89.560	182.290	7267.35	6131.44	-6123.22	377.56	40°06'55.874"N	104°50'24.389"W	1.93	
12877.00	88.210	180.850	7270.70	6303.14	-6295.12	372.85	40°06'54.175"N	104°50'24.450"W	1.15	
13046.00	88.580	181.690	7275.43	6471.85	-6464.01	369.11	40°06'52.506"N	104°50'24.498"W	0.54	
13132.00	89.410	181.780	7276.94	6557.69	-6549.96	366.50	40°06'51.657"N	104°50'24.532"W	0.97	
13217.00	89.130	181.220	7278.02	6642.56	-6634.92	364.28	40°06'50.817"N	104°50'24.560"W	0.74	
13389.00	89.750	180.150	7279.70	6814.41	-6806.90	362.22	40°06'49.117"N	104°50'24.587"W	0.72	
13561.00	91.410	180.840	7277.96	6986.28	-6978.87	360.74	40°06'47.418"N	104°50'24.606"W	1.05	
13646.00	90.980	180.340	7276.19	7071.19	-7063.85	359.86	40°06'46.578"N	104°50'24.617"W	0.78	
13731.00	90.860	181.380	7274.82	7156.10	-7148.83	358.59	40°06'45.738"N	104°50'24.634"W	1.23	
13816.00	90.120	181.920	7274.10	7240.96	-7233.79	356.14	40°06'44.899"N	104°50'24.665"W	1.08	
13901.00	90.090	181.430	7273.94	7325.82	-7318.75	353.65	40°06'44.059"N	104°50'24.697"W	0.58	
13986.00	89.010	179.730	7274.61	7410.75	-7403.74	352.79	40°06'43.219"N	104°50'24.708"W	2.37	
14070.00	88.610	180.300	7276.35	7494.70	-7487.72	352.77	40°06'42.389"N	104°50'24.709"W	0.83	
14241.00	88.430	180.160	7280.77	7665.55	-7658.66	352.09	40°06'40.700"N	104°50'24.717"W	0.13	
14327.00	89.040	179.350	7282.67	7751.50	-7744.64	352.45	40°06'39.851"N	104°50'24.713"W	1.18	
14495.00	90.700	179.980	7283.05	7919.46	-7912.63	353.44	40°06'38.190"N	104°50'24.700"W	1.06	
14581.00	89.840	181.470	7282.64	8005.38	-7998.62	352.35	40°06'37.341"N	104°50'24.714"W	2.00	
14666.00	88.890	180.650	7283.59	8090.28	-8083.60	350.78	40°06'36.501"N	104°50'24.734"W	1.48	
14837.00	88.520	181.370	7287.45	8261.05	-8254.53	347.76	40°06'34.812"N	104°50'24.773"W	0.47	
14922.00	88.920	181.200	7289.35	8345.92	-8339.48	345.86	40°06'33.972"N	104°50'24.798"W	0.51	

REFERENCE WELLPATH IDENTIFICATION			
Operator	KERR-MCGEE OIL & GAS ONSHORE LP (LAMBERT STATE PLANE COORD)	Slot	SLOT#06 KERR 14N-25HZ (576'FSL & 1996'FWL, SEC.13)
Area	COLORADO	Well	KERR 14N-25HZ
Field	WELD COUNTY (KERR MCGEE)	Wellbore	KERR 14N-25HZ AWB <116-17645>
Facility	SEC.13-T2N-R67W		

WELLPATH DATA (158 stations)										
MD [ft]	Inclination [°]	Azimuth [°]	TVD [ft]	Vert Sect	North [ft]	East [ft]	Latitude	Longitude	DLS [°/100ft]	Comments
15007.00	89.290	179.580	7290.68	8430.86	-8424.47	345.28	40°06'33.132"N	104°50'24.805"W	1.95	
15092.00	90.240	180.430	7291.03	8515.82	-8509.47	345.27	40°06'32.292"N	104°50'24.805"W	1.50	
15177.00	89.530	181.160	7291.20	8600.75	-8594.46	344.09	40°06'31.453"N	104°50'24.821"W	1.20	
15347.00	89.070	181.260	7293.27	8770.53	-8764.41	340.50	40°06'29.773"N	104°50'24.867"W	0.28	
15432.00	90.240	181.190	7293.78	8855.42	-8849.38	338.68	40°06'28.933"N	104°50'24.890"W	1.38	
15517.00	88.920	179.040	7294.41	8940.37	-8934.37	338.51	40°06'28.093"N	104°50'24.892"W	2.97	
15687.00	88.920	180.280	7297.61	9110.29	-9104.34	339.52	40°06'26.414"N	104°50'24.879"W	0.73	
15772.00	89.350	178.980	7298.90	9195.26	-9189.32	340.07	40°06'25.574"N	104°50'24.872"W	1.61	
15857.00	90.550	181.040	7298.97	9280.22	-9274.32	340.06	40°06'24.734"N	104°50'24.873"W	2.80	
15942.00	89.250	179.440	7299.12	9365.17	-9359.31	339.70	40°06'23.894"N	104°50'24.877"W	2.43	
16027.00	90.300	179.180	7299.45	9450.16	-9444.30	340.72	40°06'23.054"N	104°50'24.864"W	1.27	
16198.00	89.560	177.800	7299.66	9621.15	-9615.24	345.23	40°06'21.365"N	104°50'24.806"W	0.92	
16368.00	90.800	179.040	7299.13	9791.15	-9785.17	349.92	40°06'19.686"N	104°50'24.746"W	1.03	
16538.00	91.140	181.360	7296.25	9961.02	-9955.13	349.32	40°06'18.006"N	104°50'24.753"W	1.38	
16623.00	89.720	182.420	7295.61	10045.86	-10040.08	346.52	40°06'17.167"N	104°50'24.790"W	2.08	
16708.00	90.640	183.290	7295.34	10130.60	-10124.97	342.29	40°06'16.328"N	104°50'24.844"W	1.49	
16877.00	88.090	181.850	7297.22	10299.12	-10293.77	334.71	40°06'14.660"N	104°50'24.942"W	1.73	
17048.00	89.260	181.850	7301.17	10469.76	-10464.63	329.19	40°06'12.971"N	104°50'25.013"W	0.68	
17218.00	90.890	181.280	7300.95	10639.49	-10634.56	324.55	40°06'11.292"N	104°50'25.072"W	1.02	
17388.00	92.310	182.310	7296.20	10809.11	-10804.41	319.23	40°06'09.614"N	104°50'25.141"W	1.03	
17558.00	94.430	180.880	7286.21	10978.54	-10974.03	314.50	40°06'07.937"N	104°50'25.202"W	1.50	
17590.00	94.810	181.480	7283.63	11010.40	-11005.92	313.84	40°06'07.622"N	104°50'25.210"W	2.21	LAST BHI MWD+IFR SURVEY
17645.00	94.810	181.480	7279.02	11065.12	-11060.71	312.43	40°06'07.081"N	104°50'25.228"W	0.00	PROJECTION TO BIT

HOLE & CASING SECTIONS - Ref Wellbore: KERR 14N-25HZ AWB <116-17645> Ref Wellpath: KERR 14N-25HZ AWP									
String/Diameter	Start MD [ft]	End MD [ft]	Interval [ft]	Start TVD [ft]	End TVD [ft]	Start N/S [ft]	Start E/W [ft]	End N/S [ft]	End E/W [ft]
13.5in Open Hole	16.00	1063.00	1047.00	16.00	1062.98	0.00	0.00	1.86	-2.72
9.625in Casing Surface	16.00	1063.00	1047.00	16.00	1062.98	0.00	0.00	1.86	-2.72
8.75in Open Hole	1063.00	7723.00	6660.00	1062.98	7213.75	1.86	-2.72	-1143.01	405.05
7in Casing Intermediate	16.00	7712.00	7696.00	16.00	7212.83	0.00	0.00	-1132.06	405.51
6.125in Open Hole	7723.00	17645.00	9922.00	7213.75	7279.02	-1143.01	405.05	-11060.71	312.43

REFERENCE WELLPATH IDENTIFICATION			
Operator	KERR-MCGEE OIL & GAS ONSHORE LP (LAMBERT STATE PLANE COORD)	Slot	SLOT#06 KERR 14N-25HZ (576'FSL & 1996'FWL, SEC.13)
Area	COLORADO	Well	KERR 14N-25HZ
Field	WELD COUNTY (KERR MCGEE)	Wellbore	KERR 14N-25HZ AWB <116-17645>
Facility	SEC.13-T2N-R67W		

WELLPATH COMPOSITION - Ref Wellbore: KERR 14N-25HZ AWB <116-17645> Ref Wellpath: KERR 14N-25HZ AWP				
Start MD [ft]	End MD [ft]	Positional Uncertainty Model	Log Name/Comment	Wellbore
16.00	1006.00	Generic gyro - northseeking (Standard)	VES GYRO SURVEYS <116-1006>	KERR 14N-25HZ AWB <116-17645>
1006.00	7672.00	NaviTrak (MAGCORR,IFR)	BHI NAVITRAK MWD+IFR 8 3/4" <1008-7672>	KERR 14N-25HZ AWB <116-17645>
7672.00	17590.00	NaviTrak (MAGCORR,IFR)	BHI NAVITRAK MWD+IFR 6 1/8" <7732-17590>	KERR 14N-25HZ AWB <116-17645>
17590.00	17645.00	Blind Drilling (std)	Projection to bit	KERR 14N-25HZ AWB <116-17645>

REFERENCE WELLPATH IDENTIFICATION			
Operator	KERR-MCGEE OIL & GAS ONSHORE LP (LAMBERT STATE PLANE COORD)	Slot	SLOT#06 KERR 14N-25HZ (576'FSL & 1996'FWL, SEC.13)
Area	COLORADO	Well	KERR 14N-25HZ
Field	WELD COUNTY (KERR MCGEE)	Wellbore	KERR 14N-25HZ AWP <116-17645>
Facility	SEC.13-T2N-R67W		

WELLPATH COMMENTS				
MD [ft]	Inclination [°]	Azimuth [°]	TVD [ft]	Comment
16.00	0.000	323.264	16.00	TIE ON
116.00	0.631	323.264	116.00	BEGIN GYRO SURVEYS
1006.00	0.369	230.200	1005.99	TIE ONTO GYRO SURVEYS
1088.00	0.810	183.040	1087.98	BEGIN BHI MWD+IFR SURVEYS
7712.00	84.930	182.364	7212.83	7" CASING POINT
17590.00	94.810	181.480	7283.63	LAST BHI MWD+IFR SURVEY
17645.00	94.810	181.480	7279.02	PROJECTION TO BIT