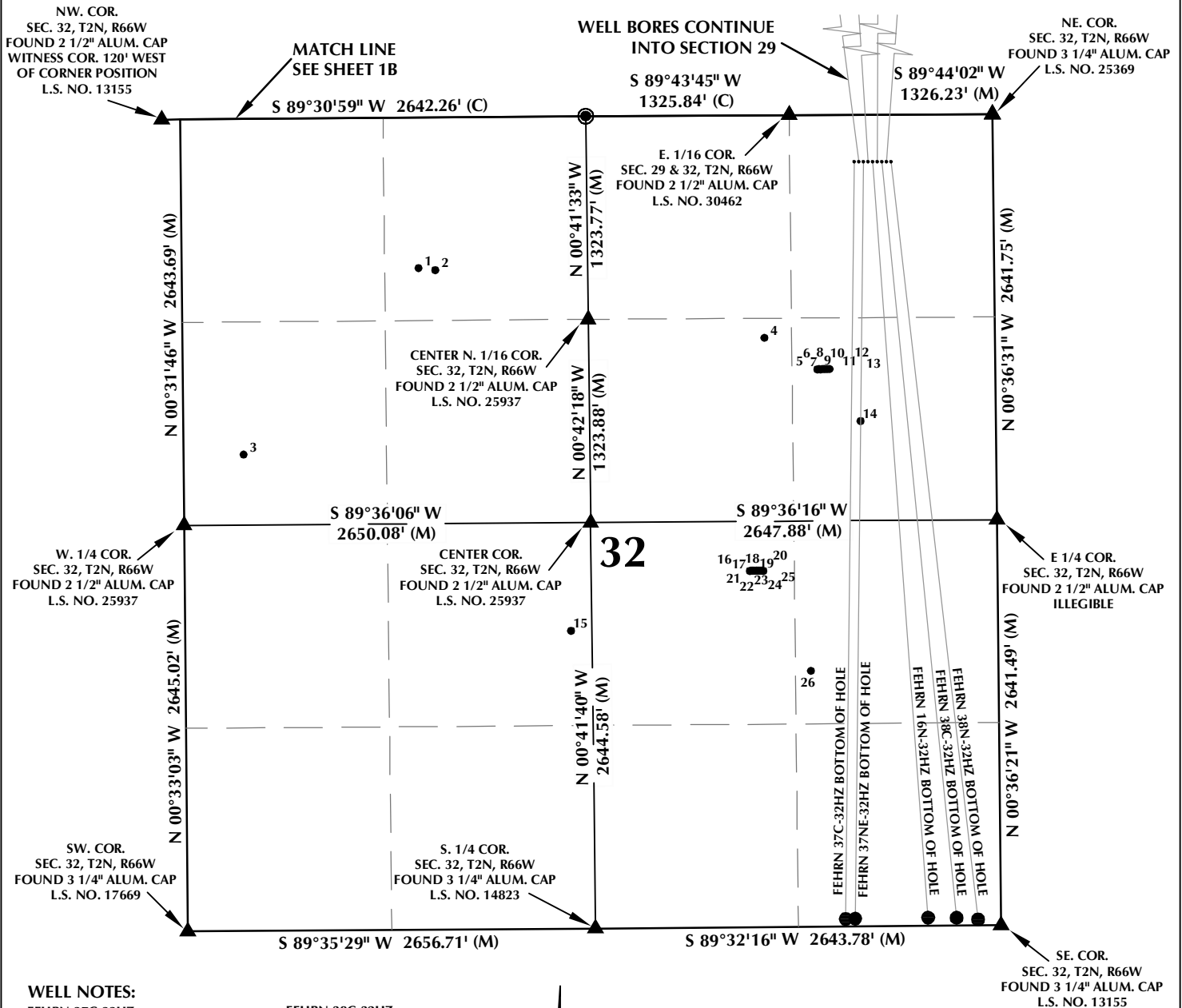


# MULTI-WELL PLAN SECTION 32, T2N, R66W



## WELL NOTES:

FEHRN 37C-32HZ  
SURFACE: 304' FNL, 904' FEL  
BOTTOM HOLE: 53' FSL, 1012' FEL

FEHRN 37C-29HZ  
SURFACE: 304' FNL, 874' FEL  
BOTTOM HOLE: 1' FNL, 1526' FEL

FEHRN 37NE-32HZ  
SURFACE: 304' FNL, 844' FEL  
BOTTOM HOLE: 50' FSL, 950' FEL

FEHRN 37N-29HZ  
SURFACE: 305' FNL, 814' FEL  
BOTTOM HOLE: 1' FNL, 1097' FEL

FEHRN 16N-32HZ  
SURFACE: 305' FNL, 784' FEL  
BOTTOM HOLE: 50' FSL, 475' FEL

FEHRN 16N-29HZ  
SURFACE: 305' FNL, 754' FEL  
BOTTOM HOLE: 1' FNL, 677' FEL

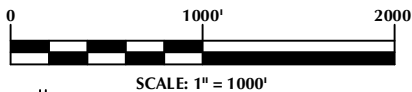
FEHRN 38C-32HZ  
SURFACE: 305' FNL, 724' FEL  
BOTTOM HOLE: 50' FSL, 289' FEL

FEHRN 38C-29HZ  
SURFACE: 305' FNL, 694' FEL  
BOTTOM HOLE: 1' FNL, 225' FEL

FEHRN 38N-32HZ  
SURFACE: 305' FNL, 664' FEL  
BOTTOM HOLE: 50' FSL, 150' FEL

## NOTES:

- ▲ INDICATES FOUND SECTION CORNER
- INDICATES CALCULATED CORNER
- BASIS OF BEARING DERIVED FROM COLORADO COORDINATE SYSTEM 1983 NORTH ZONE UNLESS OTHERWISE NOTED.
- ALL MEASURED DISTANCES ARE GRID.
- COMBINED SCALE FACTOR: .99972835
- WELL FOOTAGES ARE MEASURED AT RIGHT ANGLES TO THE SECTION LINES.



## WELL PAD - FEHRN 16N-32HZ

MULTI-WELL PLAN  
FEHRN 37C-32HZ, FEHRN 37C-29HZ, FEHRN 37NE-32HZ,  
FEHRN 37N-29HZ, FEHRN 16N-32HZ, FEHRN 16N-29HZ,  
FEHRN 38C-32HZ, FEHRN 38C-29HZ & FEHRN 38N-32HZ  
LOCATED IN SECTIONS 29 & 32  
T2N, R66W, 6TH P.M.  
WELD COUNTY, COLORADO

**Kerr-McGee Oil &  
Gas Onshore L.P.**  
1099 18th Street  
Denver, Colorado 80202



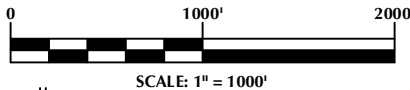
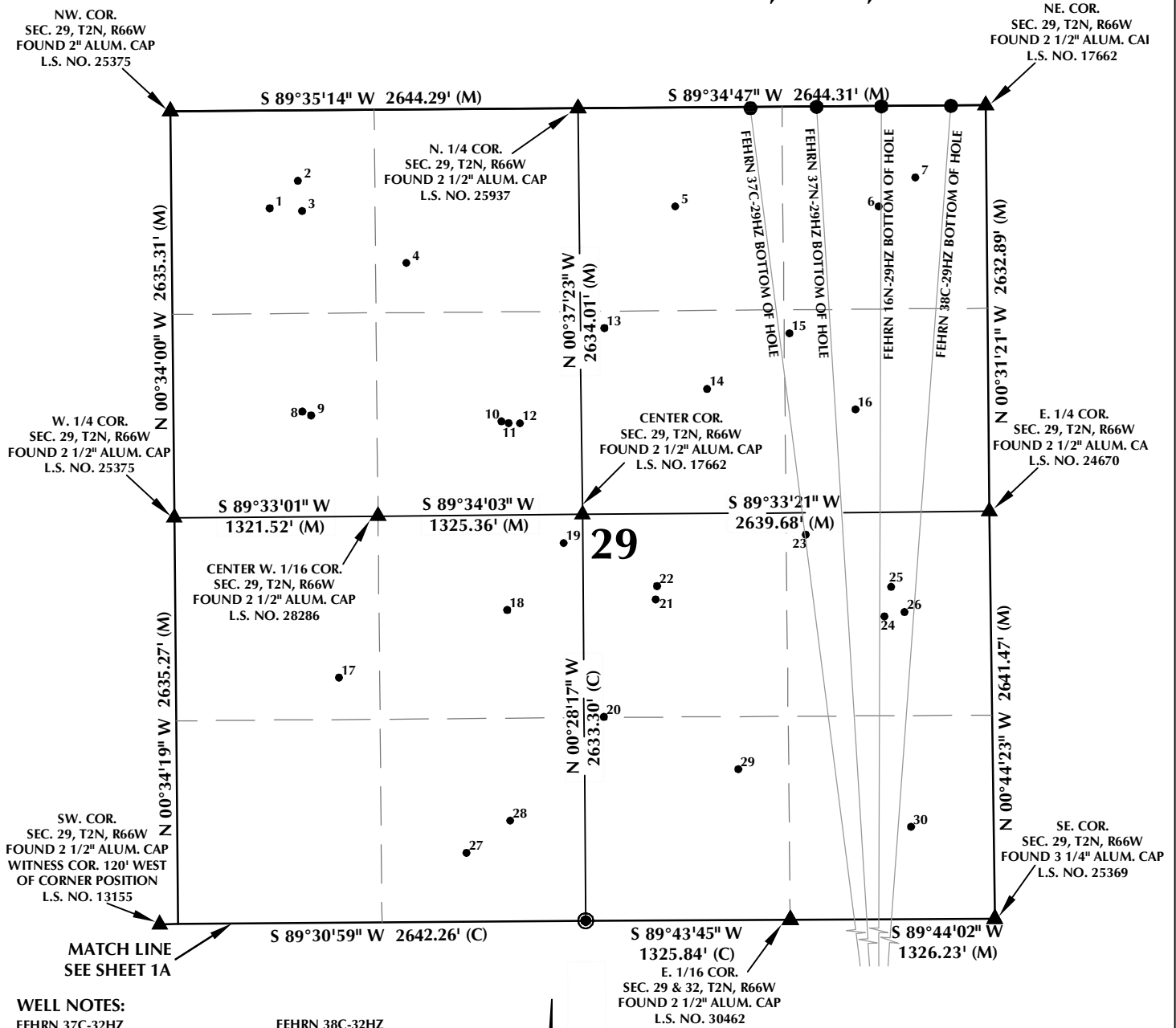
## CONSULTING, LLC

SHERIDAN OFFICE  
2155 North Main Street  
Sheridan, Wyoming 82801  
Phone 307-674-0609

LOVELAND OFFICE  
1635 Foxtrail Drive, Suite 204  
Loveland, Colorado 80538  
Phone 970-776-4331

DRAFTED BY:	LMO	CHECKED BY:	BJR	SHEET NO:
DATE DRAFTED:	12/29/14	DATE SURVEYED:	10/4/14	1A
REVISED:	1/16/15	FILE NAME:	14-75	1A OF 2

# MULTI-WELL PLAN SECTION 29, T2N, R66W



## WELL PAD - FEHRN 16N-32HZ

MULTI-WELL PLAN  
FEHRN 37C-32HZ, FEHRN 37C-29HZ, FEHRN 37NE-32HZ,  
FEHRN 37N-29HZ, FEHRN 16N-32HZ, FEHRN 16N-29HZ,  
FEHRN 38C-32HZ, FEHRN 38C-29HZ & FEHRN 38N-32HZ  
LOCATED IN SECTIONS 29 & 32  
T2N, R66W, 6TH P.M.  
WELD COUNTY, COLORADO

**Kerr-McGee Oil &  
Gas Onshore L.P.**  
1099 18th Street  
Denver, Colorado 80202



## CONSULTING, LLC

SHERIDAN OFFICE  
2155 North Main Street  
Sheridan, Wyoming 82801  
Phone 307-674-0609

LOVELAND OFFICE  
1635 Foxtrail Drive, Suite 204  
Loveland, Colorado 80538  
Phone 970-776-4331

DRAFTED BY:	LMO	CHECKED BY:	BJR	SHEET NO:
DATE DRAFTED:	12/29/14	DATE SURVEYED:	10/4/14	<b>1B</b>
REVISED:	1/16/15	FILE NAME:	14-75	1B OF 2

# MULTI-WELL PLAN

## SECTION 32, T2N, R66W

NUMBER	WELL NAME	API NUMBER	LATITUDE (NAD 83)	LONGITUDE (NAD 83)	SURFACE ELEVATION	TOTAL DEPTH
1	APPEL HEIRS FEDERAL 32-30DK	05-123-16616	40.099188	-104.805036	4900.5	8248
2	APPEL HEIRS FEDERAL 32-3K6	05-123-18752	40.099150	-104.804652	4899.1	8051
3	APPEL HEIRS FEDERAL W 32-05di	05-123-19736	40.095889	-104.809135	4897.9	8204
4	KEITH A CARTER UNIT 1	05-123-07767	40.097890	-104.796992	4914.4	8150
5	FEHRN 7-32SX	05-123-33203	40.097322	-104.795768	4922.8	5120
6	FEHRN 7-32	05-123-33211	40.097322	-104.795732	4923.4	8224
7	FEHRN 1-32SX	05-123-33191	40.097322	-104.795695	4922.6	5246
8	FEHRN 25-32	05-123-33192	40.097324	-104.795657	4923.3	8372
9	FEHRN 24-32	05-123-33188	40.097325	-104.795621	4922.9	8194
10	FEHRN 1-32	05-123-33190	40.097325	-104.795592	4922.8	8476
11	FEHRN 8-32	05-123-33196	40.097326	-104.795555	4922.9	8159
12	FEHRN 26-32	05-123-33209	40.097327	-104.795519	4923.1	8422
13	FEHRN 41-32	05-123-33189	40.097327	-104.795483	4923.0	8232
14	*W W FEHRN 1	05-123-09363	40.096391	-104.794767	N/A	4850
15	PACHECO HIERS GAS UNIT 1	05-123-08406	40.092681	-104.801550	4903.9	8050
16	CARTER 10-32	05-123-33141	40.093727	-104.797379	4915.7	7704
17	CARTER 23-32	05-123-33147	40.093728	-104.797345	4916.2	8320
18	CARTER 36-32	05-123-33143	40.093728	-104.797307	4915.8	8594
19	CARTER 15-32SX	05-123-33136	40.093727	-104.797273	4915.8	5326
20	CARTER 15-32	05-123-33142	40.093728	-104.797236	4916.0	8554
21	CARTER 37-32	05-123-33144	40.093728	-104.797201	4915.7	8623
22	CARTER 16-32	05-123-33139	40.093728	-104.797167	4915.9	8432
23	CARTER 16-32SX	05-123-33145	40.093727	-104.797132	4915.7	5476
24	CARTER 9-32	05-123-33138	40.093727	-104.797094	4915.9	8198
25	CARTER 9-32SX	05-123-33140	40.093725	-104.797058	4916.0	5065
26	KEITH A CARTER UNIT 2	05-123-10829	40.091928	-104.795969	4932.3	8200

### NOTES:

- \* INDICATES EXISTING WELLS THAT WERE NOT SURVEYED BUT DERIVED FROM COLORADO OIL AND GAS CONSERVATION COMMISSION (COGCC).

**EXISTING WELL EXHIBIT  
SECTION 32, T2N, R66W, 6TH P.M.  
WELD COUNTY, COLORADO**

**Kerr-McGee Oil &  
Gas Onshore L.P.**  
1099 18th Street  
Denver, Colorado 80202



### CONSULTING, LLC

**SHERIDAN OFFICE**  
2155 North Main Street  
Sheridan, Wyoming 82801  
Phone 307-674-0609

**LOVELAND OFFICE**  
1635 Foxtrail Drive, Suite 204  
Loveland, Colorado 80538  
Phone 970-776-4331

DRAFTED BY:	LMO	CHECKED BY:	BJR	SHEET NO:
DATE DRAFTED:	12/29/14	DATE SURVEYED:	10/4/14	<b>2A</b>
REVISED:		FILE NAME:	14-75	2A OF 2

# MULTI-WELL PLAN

## SECTION 29, T2N, R66W

NUMBER	WELL NAME	API NUMBER	LATITUDE (NAD 83)	LONGITUDE (NAD 83)	SURFACE ELEVATION	TOTAL DEPTH
1	*APPEL 1	05-123-08026	40.114608	-104.808310	N/A	4750
2	SHIVERS W FEDERAL 29-4JI	05-123-20083	40.115089	-104.807654	4886.2	7998
3	APPEL 2	05-123-08029	40.114553	-104.807561	4888.4	4750
4	SHIVERS GU FEDERAL 2-29	05-123-14364	40.113613	-104.805158	4887.7	7995
5	*SHIVERS 2	05-123-07894	40.114580	-104.798913	N/A	4750
6	*SHIVERS 5	05-123-08776	40.114558	-104.794190	N/A	4775
7	SHIVERS 41-29	05-123-19606	40.115064	-104.793342	4915.0	8010
8	*APPEL 3	05-123-09050	40.110978	-104.807590	N/A	4792
9	APPEL 4-29	05-123-14913	40.110914	-104.807394	4889.4	8126
10	SHIVERS W FEDERAL 29-6D	05-123-19642	40.110780	-104.802978	4892.2	8158
11	ALE FEDERAL W 29-20D	05-123-28060	40.110749	-104.802811	4892.4	8192
12	APPEL (MARTIN) 1-A	05-123-08122	40.110744	-104.802550	4893.6	4730
13	VYNCKIER W 29-18	05-123-30219	40.112428	-104.800576	4892.6	7572
14	*SHIVERS 4	05-123-08775	40.111327	-104.798208	N/A	4750
15	SHIVERS 1	05-123-07727	40.112307	-104.796284	4900.9	8088
16	*SHIVERS 3	05-123-07951	40.110942	-104.794770	N/A	4800
17	PUTNAM 1	05-123-08542	40.106245	-104.806791	4891.3	8482
18	BRAND 1	05-123-08746	40.107421	-104.802879	4894.7	4736
19	ALE W 29-21	05-123-28065	40.108604	-104.801559	4893.6	7589
20	ALE W 29-24	05-123-28064	40.105506	-104.800657	4904.1	7587
21	*PUTNAM 1	05-123-07873	40.107590	-104.799438	N/A	4781
22	ALE PARTNERSHIP FEDERAL W 29-10DI	05-123-19687	40.107828	-104.799402	4908.3	8130
23	ALE W 29-22	05-123-28056	40.108722	-104.795944	4930.7	8051
24	*LUCAS 1	05-123-05043	40.107256	-104.794136	N/A	5161
25	ALE PARTNERSHIP FEDERAL W 29-9JI	05-123-19856	40.107780	-104.793978	4942.9	8008
26	ALE PARTNERSHIP 1-29	05-123-14579	40.107328	-104.793674	4947.6	7568
27	PUTNAM 24-29	05-123-19747	40.103108	-104.803871	4896.5	8055
28	*BRAND 2	05-123-09923	40.103676	-104.802852	N/A	4860
29	PUTNAM FEDERAL 2-29	05-123-14452	40.104557	-104.797553	4923.6	8035
30	ALE PARTNERSHIP FEDERAL W 29-16JI	05-123-19897	40.103509	-104.793561	4945.7	8172

### NOTES:

- \* INDICATES EXISTING WELLS THAT WERE NOT SURVEYED BUT DERIVED FROM COLORADO OIL AND GAS CONSERVATION COMMISSION (COGCC).

**EXISTING WELL EXHIBIT  
SECTION 29, T2N, R66W, 6TH P.M.  
WELD COUNTY, COLORADO**

**Kerr-McGee Oil &  
Gas Onshore L.P.**  
1099 18th Street  
Denver, Colorado 80202



### CONSULTING, LLC

SHERIDAN OFFICE  
2155 North Main Street  
Sheridan, Wyoming 82801  
Phone 307-674-0609

LOVELAND OFFICE  
1635 Foxtrail Drive, Suite 204  
Loveland, Colorado 80538  
Phone 970-776-4331

DRAFTED BY:	LMO	CHECKED BY:	BJR	SHEET NO:
DATE DRAFTED:	12/29/14	DATE SURVEYED:	10/4/14	<b>2B</b>
REVISED:		FILE NAME:	14-75	2B OF 2