

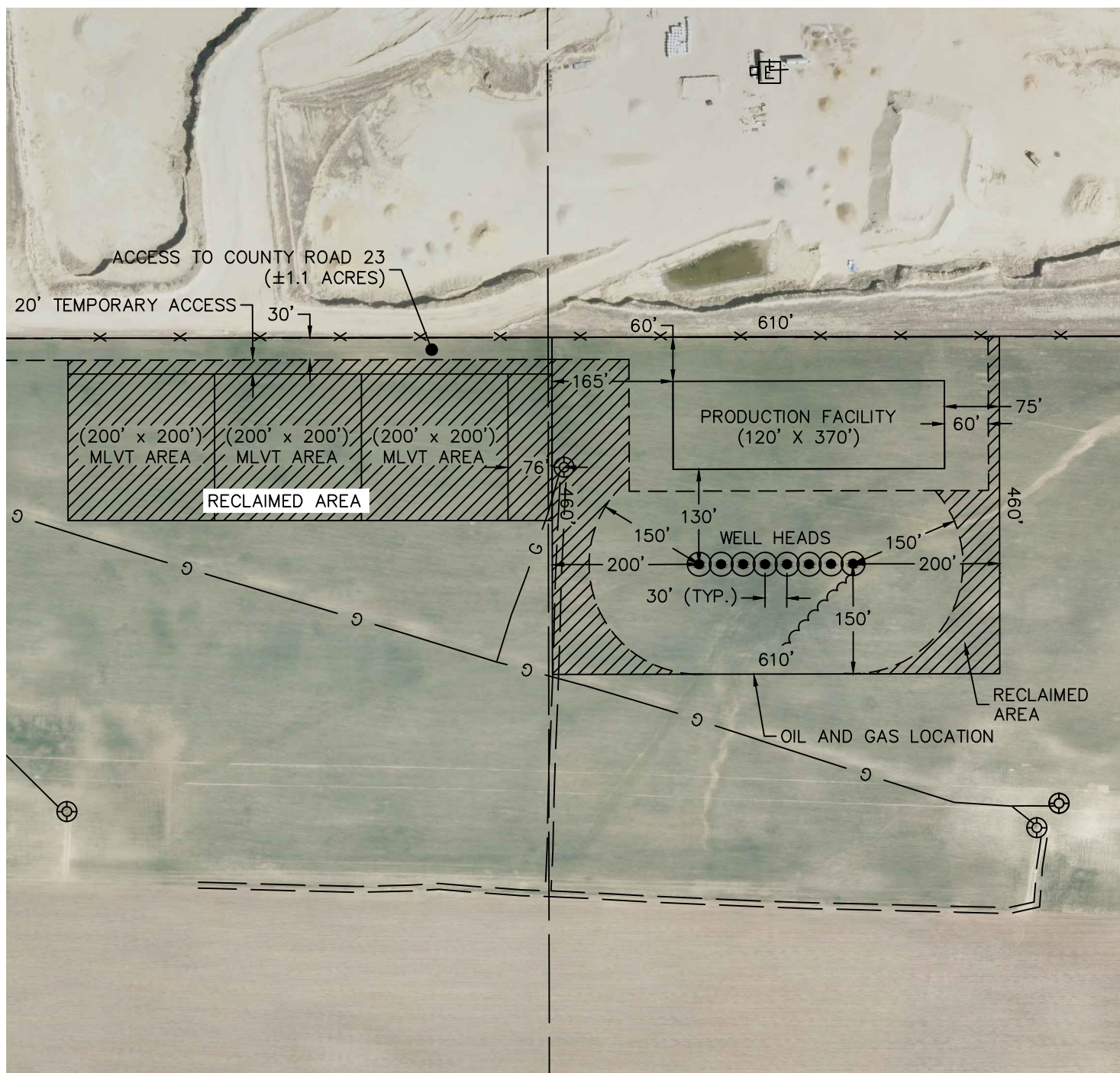


Lat40°, Inc. 1635 Foxtrail Drive, Suite 325 Loveland, CO 970-776-3321

## SCALED FACILITY DRAWING

STROH 13GK-HZ PAD

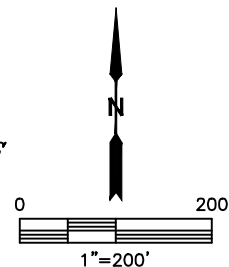
SECTION: 13  
TOWNSHIP: 4N  
RANGE: 67W



### LEGEND

- PROPOSED WELL HEAD
- ⊙ TANK BATTERY
- ⊙ WATER TANK
- ⊙ WATER VAULT
- ⊙ SEPARATOR
- ⊙ ECD
- ⊙ METER
- VRU- VAPOR RECOVERY UNIT

**TOTAL DISTURBED AREA OF LOCATION: ±9.8 ACRES**  
**TOTAL SIZE OF ACCESS TO COUNTY ROAD 23: ±1.1 ACRES**  
**TOTAL SIZE OF LOCATION AFTER RECLAMATION: ±5.1 ACRES**



DATE: 3/3/2015  
PROJECT#: 2013156