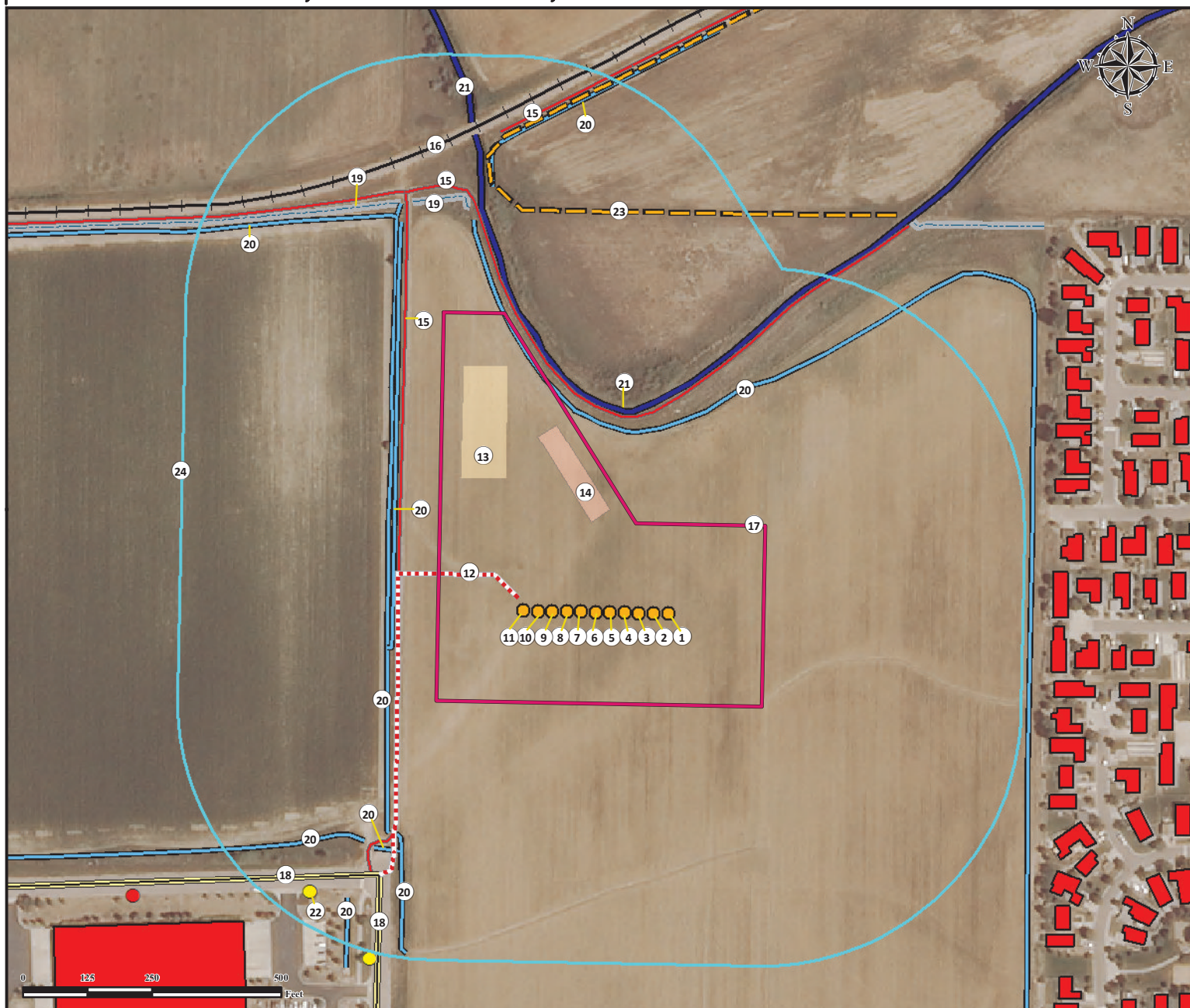


# Location Drawing FAIRVIEW 5-I PAD

## MULTI WELL PAD

NW1/4 SW1/4 SECTION 5, TOWNSHIP 2 NORTH, RANGE 68 WEST OF THE 6TH PRINCIPAL MERIDIAN



1. Proposed Well FAIRVIEW 1.
2. Proposed Well FAIRVIEW 2.
3. Proposed Well FAIRVIEW 3.
4. Proposed Well FAIRVIEW 4.
5. Proposed Well FAIRVIEW 5.
6. Proposed Well FAIRVIEW 6.
7. Proposed Well FAIRVIEW 7.
8. Proposed Well FAIRVIEW 8.
9. Proposed Well FAIRVIEW 9.
10. Proposed Well FAIRVIEW 10.
11. Proposed Well FAIRVIEW 11.

12. Proposed Access Road.
13. Proposed Tank Battery is  $\pm 312'$  NW.
14. Proposed Separator Pad is  $\pm 175'$  N.
15. Private Roads are  $\pm 382'$  W,  $\pm 383'$  NE, and  $\pm 949'$  N.
16. Railroad is  $\pm 953'$  NW.
17. Operational Disturbance Area.
18. Public Roads are  $\pm 656'$  SW, and  $\pm 656'$  SW.
19. Concrete Ditches are  $\pm 823'$  NW, and  $\pm 878'$  NW.
20. Ditches are  $\pm 358'$  NE,  $\pm 393'$  W,  $\pm 403'$  W,  $\pm 575'$  SW,  $\pm 594'$  SW,  $\pm 629'$  SW,  $\pm 731'$  SW,  $\pm 847'$  NW, and  $\pm 857'$  NW.

21. Canals are  $\pm 394'$  NE, and  $\pm 979'$  NW.
22. Light Pole is  $\pm 773'$  SW.
23. Fence is  $\pm 777'$  N.
24. 500' Radius.

### Legend

- Proposed Well
- Light Pole
- Fire Hydrant

- Public Road
- Proposed Access Road
- Fence
- Private Road
- Ditch
- Concrete Ditch
- Canal
- Railroad

- Disturbance Area
- 500' Radius
- Proposed Tank Battery
- Proposed Separator Pad
- Building Unit

### Measured from Nearest Well or Facility

Building -	$\pm 742'$ E
Building Unit -	$\pm 742'$ E
Surface Water (Ditch) -	$\pm 57'$ NE
Public Road - (Fairview St.)	$\pm 532'$ SW
Prop. Line (Weld County)	$\pm 84'$ W
Utility (Power Line) -	$\pm 1500'$ NW
Railroad -	$\pm 434'$ NW

### Measured from Nearest Well

Water Well - $\pm 1372'$ SE	SWL = 0'
Permit: 52009,	Receipt: 0052009
Water Well - $\pm 2168'$ W	SWL = 14'
Permit: 134176,	Receipt: 0241689

### Reference Location

\*\* FAIRVIEW 6 \*\*

Lat: 40.165763° Long: -105.035167° (NAD83)  
Elevation: 4945 Feet  
1855' FSL & 390' FWL  
PDOP: 1.6

### Disturbance Acreage:

7.35 Acres Drilling Operations  
3.68 Acres Interim Reclaim

Current Surface Use: Irrigated Crop  
Future Surface Use: Irrigated Crop



Use our resources to find yours!  
[www.petro-fs.com](http://www.petro-fs.com)  
(303) 928-7128

Field Date: 7/26/2014  
Drafting Date: 3/04/2015  
Drafted By: DRP  
Checked By: MLP  
Revision: 1

Data Sources:  
- Aerial courtesy of NAIP (2013)

Prepared for:

