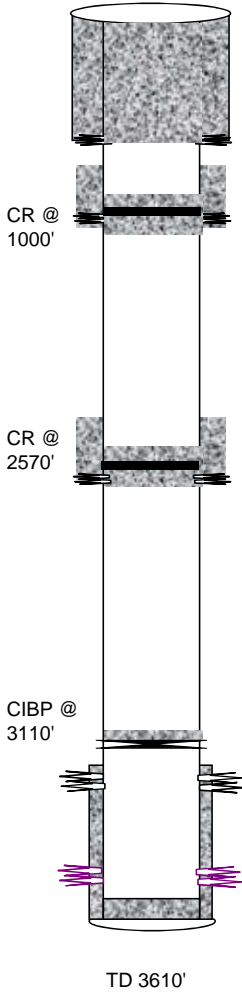




# Black Hills Plateau Production, LLC

A Black Hills Corporation Enterprise



General Well Info		Diagram Date:	3/11/15 by jad
Well Name:	HSC 3-21	Field:	Shire Gulch
Srf Location:	NENW Sect. 21 T9S R97W	County:	Mesa
Lease # <sub>(BLM)</sub> :	COC012644A	State:	Colorado
API #:	05-077-08648	Spud Date:	10/31/1992
GL Elev:	5558'	TD Date:	11/9/1992
KB Elev:	5569'	Compl Date:	11/21/1992
Formation Tops			
Zone	Depth	Zone	Depth
Cameo	2679'		
Rollins	2933'		
Cozzette	3152'		
Corcoran	3352'		
Sego	3516'		

Srf Csg 12 1/4" hole, 8 5/8" 24# J-55 ST&C @ 457'  
 Cmt 320 sx Class G, 1/4#/sx Celloseal 2/ 2% CC. Displ cmt

Prod Csg 7 7/8" hole, 5 1/2" 15.5# K-55 LT&C @ 3608'  
 Cmt 55 sx HiFill 10# Gilsonite/sx 1/4# Flocele. Tail w/ 106sx Class G 1/4# Flocele 1% CC

COZZ (12/27/92) 3162-3210' (1 spf, Total 48 holes)  
 NOTE: Daily report shows perforation, not reported to COGCC  
 No Frac

CRCRN (11/18/92) 3366-3372', 3376-3378', 3380-3386', 3403-3432' (Jet 0.45", 1 spf, Total 43 holes)  
 11/18/92 Schlumberger frac'd w/ 49,056 gal 70Q foam, 310,000# 20-40 Ottawa sd, 99,000 SCF N2. Min 280 psi, Max 980 psi, Avg 400 psi. Av g inj rate 30 BPM, ISIP 450 psi

## PROPOSED P&A

Run CBL to determine TOC

If TOC is above 3062': then POH and RIH w/ WL set CIBP @ 3110, dump 2 sks cmnt on top.

If TOC is not above 3062': Set CR @ 3125, pump 45 sks of class "C" or type "III" cement. Dump 2 sks of cement on top.

If TOC is not above 2670': Perf 4 circ holes @ 2670'; set CR @ 2570'; pump 45 sks Class "C" or Type "III" cmt below CR. Dump 2 sks on top.

If TOC is above 2670': Perf 4 circ holes @ 1100'. Set CR @ 1000'. Pump 25 sx Class "C" or Type "III" cmt below. Dump 5 sx on top CR.

Perf 4 circ holes @ 507'. Pump 300 sx and bring to surf.

Dig out wellhead, cut off 8 5/8" csg and 5 1/2" csg 6' below ground level. Install dry hole marker as per BLM and COGCC.

Reclaim and file necessary sundries.