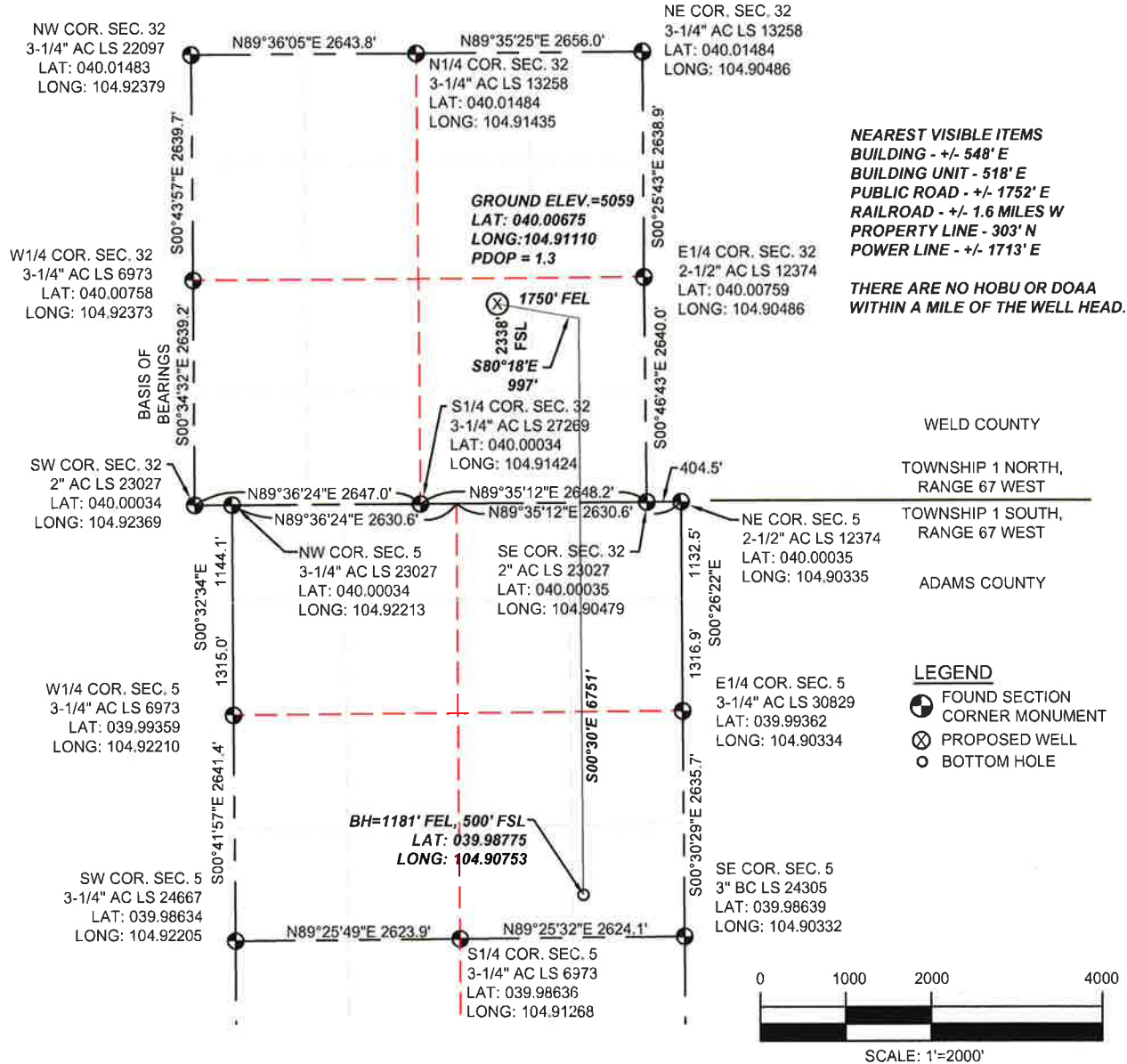


WELL LOCATION CERTIFICATE

SECTION 32, TOWNSHIP 1 NORTH & SECTION 5, TOWNSHIP 1 SOUTH,
RANGE 67 WEST, 6TH P.M.



NOTES:

- THIS IS A HORIZONTAL DRILL WELL. BOTTOM HOLE AT 1181' FEL, 500' FSL, SECTION 5.
- SEE LOCATION DRAWING FOR IMPROVEMENTS.
- ELEVATION SOURCE: USGS QUAD MAP CONTOURS, 7.5 MINUTE SERIES, NGVD 1929 DATUM.
- SECTION DIMENSIONS SHOWN ARE FIELD MEASURED. EXTERIOR SECTION LINES ARE DRAWN TO SCALE. DISTANCES TO WELL LOCATION ARE PERPENDICULAR TO SECTION LINES.
- THIS IS NOT A MONUMENTED BOUNDARY. THIS EXHIBIT IS INTENDED ONLY TO DEPICT THE PROPOSED WELL LOCATION TO SECTION LINES.

I HEREBY STATE TO PDC ENERGY THAT THE SURFACE LOCATION FOR THE PROPOSED WELL JACOBUCCI 32S-403 IS LOCATED 2338' FSL AND 1750' FEL, SEC. 32, T1N, R67W, 6TH P.M.



THOMAS G. CARLSON, PLS 24657
SAM, LLC

SAM
 SURVEYING AND MAPPING LLC (SAM)
 555 Zang St., Suite 210
 Lakewood CO. 80228
 Ph: (303) 988-5852
 Fax: (303) 988-2195
 EMAIL: SAM@SAM.BIZ

WELL NAME: JACOBUCCI 32S-403

LOCATION:
 SURFACE: SEC. 32, T1N, R67W, 6TH P.M.
 WELD COUNTY, COLORADO;
 BOTTOM HOLE: SEC. 5, T1S, R67W, 6TH P.M.
 ADAMS COUNTY, COLORADO

DRAWN BY: SJTM
 CHECKED BY: T. CARLSON
 SHEET No. 1 OF 1

FIELD DATE 09/11/2014	SCALE: 1"=2000'	PROJ. No. 34481	Dwg. No. JACOBUCCI09092014.dwg
EXHIBIT DATE 09/13/2014			