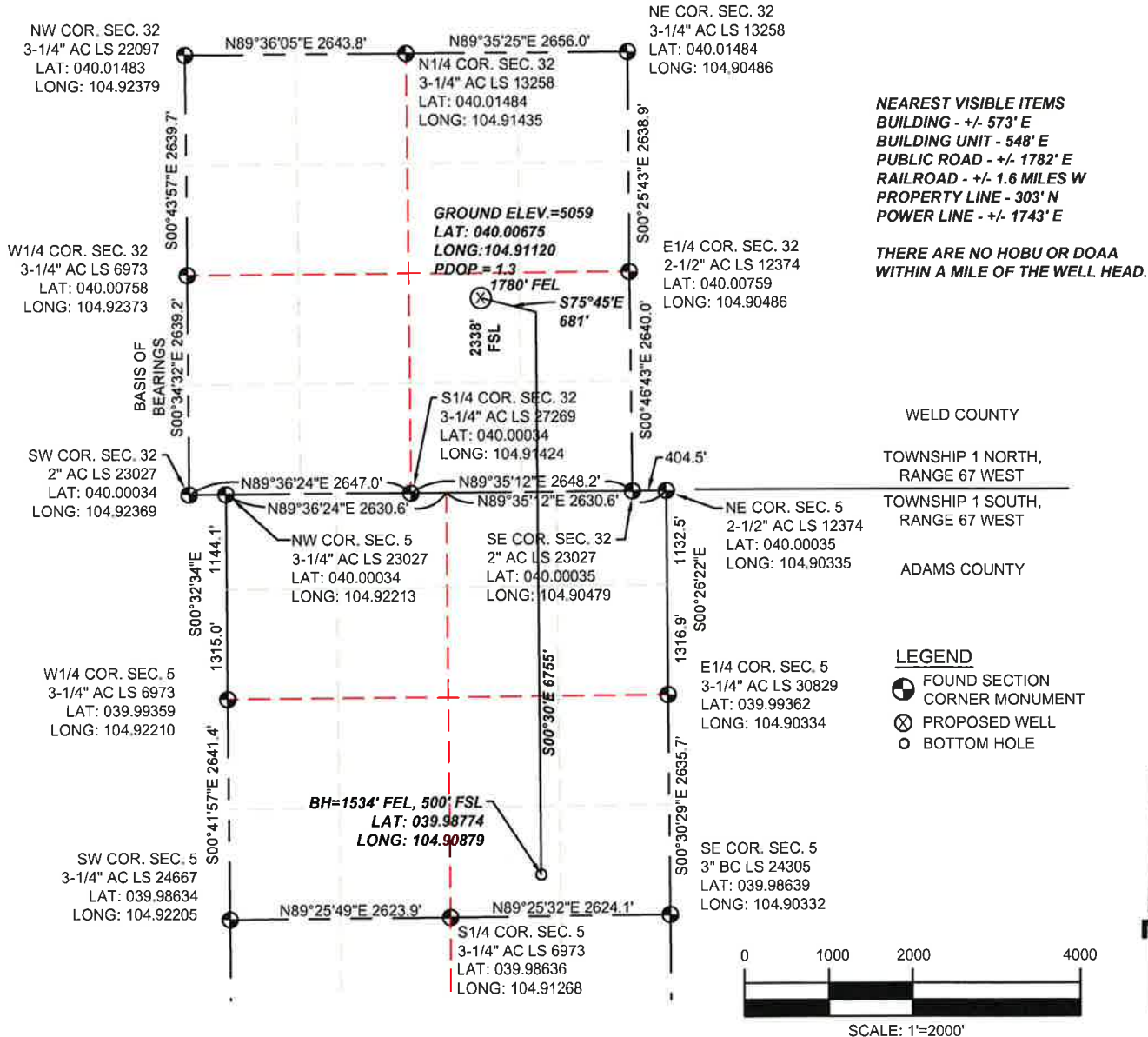


# WELL LOCATION CERTIFICATE

SECTION 32, TOWNSHIP 1 NORTH & SECTION 5, TOWNSHIP 1 SOUTH,  
RANGE 67 WEST, 6TH P.M.



I HEREBY STATE TO PDC ENERGY THAT THE SURFACE LOCATION FOR THE PROPOSED WELL JACOBUCCI 32S-303 IS LOCATED 2338' FSL AND 1780' FEL, SEC. 32, T1N, R67W, 6TH P.M.



## NOTES:

- THIS IS A HORIZONTAL DRILL WELL. BOTTOM HOLE AT 1534' FEL, 500' FSL. SECTION 5.
- SEE LOCATION DRAWING FOR IMPROVEMENTS.
- ELEVATION SOURCE: USGS QUAD MAP CONTOURS, 7.5 MINUTE SERIES, NGVD 1929 DATUM.
- SECTION DIMENSIONS SHOWN ARE FIELD MEASURED. EXTERIOR SECTION LINES ARE DRAWN TO SCALE. DISTANCES TO WELL LOCATION ARE PERPENDICULAR TO SECTION LINES.
- THIS IS NOT A MONUMENTED BOUNDARY. THIS EXHIBIT IS INTENDED ONLY TO DEPICT THE PROPOSED WELL LOCATION TO SECTION LINES.



555 Zang St., Suite 210  
Lakewood CO. 80228  
Ph: (303) 988-5852  
Fax: (303) 988-2195  
EMAIL: SAM@SAM.BIZ

WELL NAME: JACOBUCCI 32S-303		
LOCATION: SURFACE: SEC. 32, T1N, R67W, 6TH P.M. WELD COUNTY, COLORADO; BOTTOM HOLE: SEC. 5, T1S, R67W, 6TH P.M. ADAMS COUNTY, COLORADO		
DRAWN BY: TWK	CHECKED BY: T. CARLSON	SHEET No. 1 OF 1

FIELD DATE 09/11/2014	SCALE: 1"=2000'	PROJ. No. 34481	Dwg. No. JACOBUCCI09092014.dwg
EXHIBIT DATE 09/19/2014			