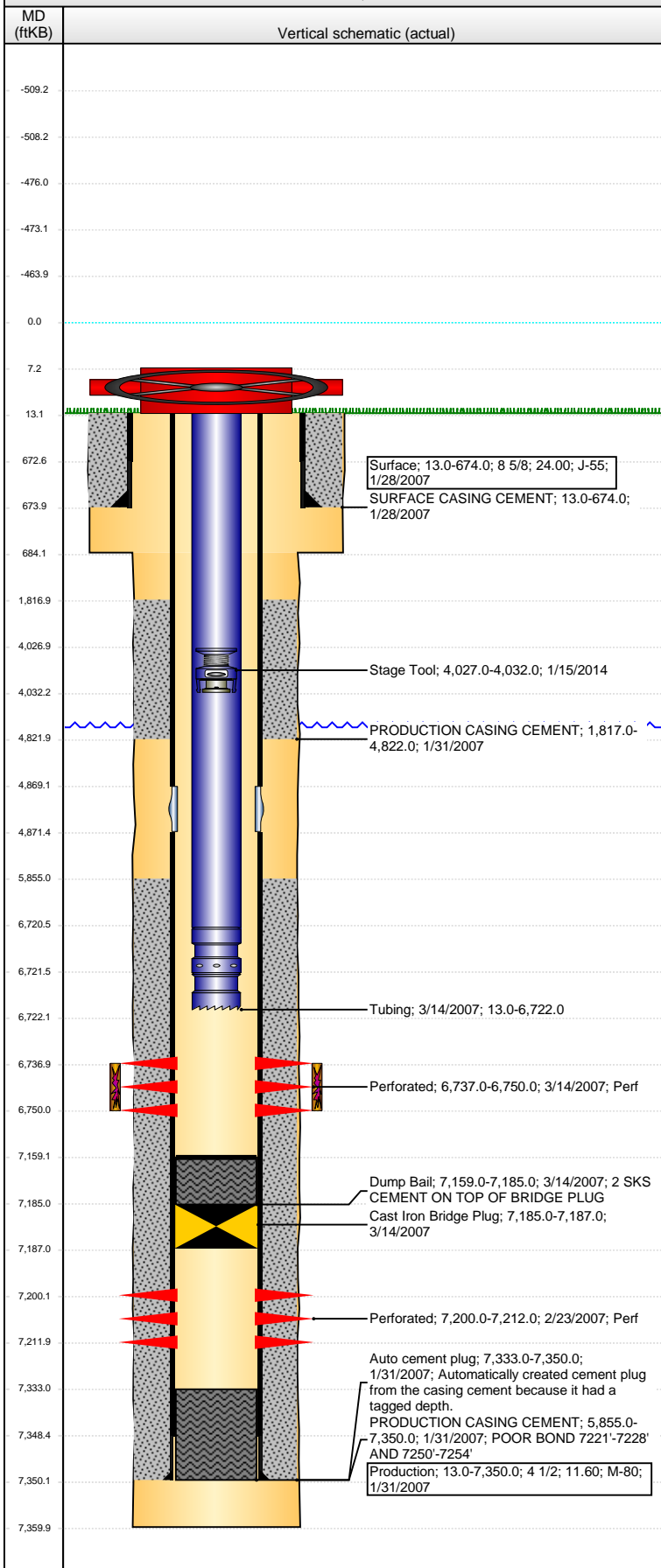


**Well Name: DEVRIES USX AA31-11**

VERTICAL - ORIGINAL HOLE, 3/10/2015 7:44:07 AM



## Well Header

API 05-123-24597	Business Unit DJ BASIN	District 15	Well Config VERTICAL
Original KB Elevation (ft) 4,636.00	KB - GL / MSL (ftKB) 13.00	Spud Date 1/27/2007	P & A Date

Comment  
DV TOOL @ +/- 4827'. DRILLED OUT 2/16/2007.  
TIGHT AT +/- 4900'

Directions To Well

## Congressional Location

Quarter 1	Quarter 2	Quarter 3	Quarter 4	Section	Township	Twnshp N...	Range	Rng E/W Dir
		NE	SW	31	6	N	63	W

## Bottom Hole Location

North-South Distance (ft)	From N or S Line	East-West Distance (ft)	From E or W Line

## Plug Back Total Depths

Date	Depth (ftKB)	Method	Com
1/31/2007	7,333.0	CASING TALLY	FLOAT COLLAR
2/20/2007	7,327.0	TAG	PACKING DEVICE
2/21/2007	7,328.0	CASED HOLE LOG	DEPTH LOGGER
3/14/2007	7,159.0	TAG	CEMENT ON CIBP

## Wellbore Sections

Section Des	Size (in)	Act Top, MD (ftKB)	Act Btm, MD (ftKB)
SURFACE	12 1/4	13.0	684.0
PRODUCTION	7 7/8	684.0	7,360.0

## Zone Statuses

Zone Name	Status Date	Status	Job
J SAND	3/14/2007	SI	DRILLING/COMPLETION - ORIGINAL, 1/26/2007 00:00
CODELL	4/9/2007	PR	DRILLING/COMPLETION - ORIGINAL, 1/26/2007 00:00

## Casing Strings

### Surface, 674.0ftKB

Casing Description	Run Date	OD (in)	Wt/Len (l...)	Grade	Top, MD (ft...)	MD (ftKB)
Surface	1/28/2007	8 5/8	24.00	J-55	13.0	674.0

### Production, 7,350.0ftKB

Casing Description	Run Date	OD (in)	Wt/Len (l...)	Grade	Top, MD (ft...)	MD (ftKB)
Production	1/31/2007	4 1/2	11.60	M-80	13.0	7,350.0

## Cement

Description	Top Depth (ftKB)	Bottom Depth (ftKB)
SURFACE CASING CEMENT	13.0	674.0
PRODUCTION CASING CEMENT	1,817.0	4,822.0
PRODUCTION CASING CEMENT	5,855.0	7,350.0
Dump Bail	7,159.0	7,185.0

## Tubing Strings

Tubing Description	Run Date	String...	ID (in)	Wt (lb/ft)	Grade	Len (ft)	Set De...
Tubing	3/14/2007	2 3/8	1.995	4.70	J-55	6,709.00	

## Tubing Components

Item Des	OD (in)	Wt (lb/ft)	Grade	Jts	Len (ft)	Btm (ftKB)	Btm (TVD) (ftKB)
EUE 8rd Tubing	2 3/8	4.70	J-55	218	6,707.50	6,720.5	
Seal Nipple	2 3/8			1	1.00	6,721.5	
Notched collar	2 3/8			1	0.50	6,722.0	

## Perforation Data

Zone	Bnch/St g	Entered Shot Total	Top (ftKB)	Btm (ftKB)	Date
CODELL, ORIGINAL HOLE		52	6,737.00	6,750.00	3/14/2007
J SAND, ORIGINAL HOLE		48	7,200.00	7,212.00	2/23/2007

## Stimulations & Treatments

Date	Zone	Primary Job Type
4/3/2007	CODELL, ORIGINAL HOLE	DRILLING/COMPLETION - ORIGINAL
Technical Result	Tech Result Details	Tech Result Note

Comment

**Well Name: DEVRIES USX AA31-11**

VERTICAL - ORIGINAL HOLE, 3/10/2015 7:44:10 AM

## Other In Hole

Run Date	Des	OD (in)	Top (ftKB)	Btm (ftKB)
3/14/2007	Cast Iron Bridge Plug	3.99	7,185.0	7,187.0
1/15/2014	Stage Tool	2	4,027.0	4,032.0

## Logs

Date	Type	Top, MD (ftKB)	Btm, MD (ftKB)
5/2/2014	GYRO	13.0	6,600.0

