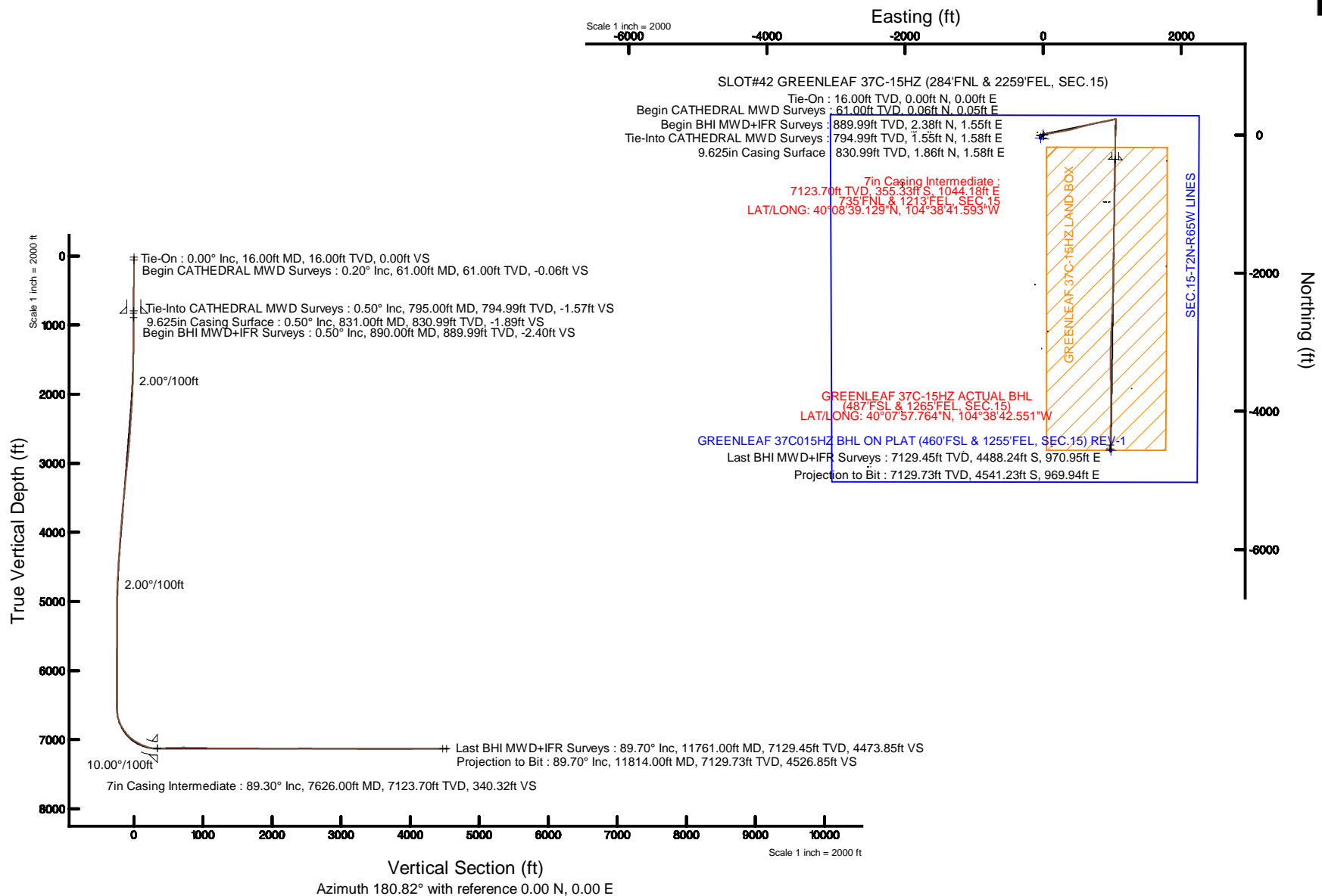


Location: COLORADO Slot: SLOT#42 GREENLEAF 37C-15HZ (284'FNL & 2259'FEL, SEC.15)
Field: WELD COUNTY (KERR MCGEE) Well: GREENLEAF 37C-15HZ
Facility: SEC.15-T2N-R65W Wellbore: GREENLEAF 37C-15HZ PWB

True vertical depths are referenced to XTREME 23 (16KB) (RKB)	Grid System: NAD83 / Lambert Colorado SP, Northern Zone (501), US feet
Measured depths are referenced to XTREME 23 (16KB) (RKB)	North Reference: True north
XTREME 23 (16KB) (RKB) to Mean Sea Level: 4884 feet	Scale: True distance
Mean Sea Level to Mud line (At Slot: SLOT#42 GREENLEAF 37C-15HZ (284FNL & 2259FEL, SEC. 15)): 0 feet	Depths are in feet
Coordinates are in feet referenced to Slot	Created by: precain on 3/2/2015



Actual Wellpath Report

GREENLEAF 37C-15HZ AWP

Page 1 of 6

REFERENCE WELLPATH IDENTIFICATION

Operator	KERR-MCGEE OIL & GAS ONSHORE LP	Slot	SLOT#42 GREENLEAF 37C-15HZ (284'FNL & 2259'FEL, SEC.15)
Area	COLORADO	Well	GREENLEAF 37C-15HZ
Field	WELD COUNTY (KERR MCGEE)	Wellbore	GREENLEAF 37C-15HZ AWB <61-11310>
Facility	SEC.15-T2N-R65W		

REPORT SETUP INFORMATION

Projection System	NAD83 / Lambert Colorado SP, Northern Zone (501), US feet	Software System	WellArchitect® 4.1.1
North Reference	True	User	Precain
Scale	0.999959	Report Generated	3/2/2015 at 10:24:20 AM
Convergence at slot	0.55° East	Database/Source file	WellArchitectDB/GREENLEAF_37C-15HZ_AWB_61-11310_.xml

WELLPATH LOCATION

	Local coordinates		Grid coordinates		Geographic coordinates	
	North[ft]	East[ft]	Easting[US ft]	Northing[US ft]	Latitude	Longitude
Slot Location	968.33	-870.00	3238005.21	1296874.40	40°08'42.641"N	104°38'55.039"W
Facility Reference Pt			3238884.46	1295914.54	40°08'33.072"N	104°38'43.836"W
Field Reference Pt			3197771.84	1268891.29	40°04'09.600"N	104°47'36.000"W

WELLPATH DATUM

Calculation method	Minimum curvature	XTREME 23 (16'KB) (RKB) to Facility Vertical Datum	4884.00ft
Horizontal Reference Pt	Slot	XTREME 23 (16'KB) (RKB) to Mean Sea Level	4884.00ft
Vertical Reference Pt	XTREME 23 (16'KB) (RKB)	XTREME 23 (16'KB) (RKB) to Mud Line at Slot (SLOT#42 GREENLEAF 37C-15HZ (284'FNL & 2259'FEL, SEC.15))	4884.00ft
MD Reference Pt	XTREME 23 (16'KB) (RKB)	Section Origin	N 0.00, E 0.00 ft
Field Vertical Reference	Mean Sea Level	Section Azimuth	180.82°

Actual Wellpath Report

GREENLEAF 37C-15HZ AWP

Page 2 of 6

REFERENCE WELLPATH IDENTIFICATION

Operator	KERR-MCGEE OIL & GAS ONSHORE LP	Slot	SLOT#42 GREENLEAF 37C-15HZ (284'FNL & 2259'FEL, SEC.15)
Area	COLORADO	Well	GREENLEAF 37C-15HZ
Field	WELD COUNTY (KERR MCGEE)	Wellbore	GREENLEAF 37C-15HZ AWB <61-11310>
Facility	SEC.15-T2N-R65W		

WELLPATH DATA (114 stations) † = interpolated/extrapolated station

MD [ft]	Inclination [°]	Azimuth [°]	TVD [ft]	Vert Sect [ft]	North [ft]	East [ft]	Latitude	Longitude	DLS [°/100ft]	Comments
0.00†	0.000	39.600	0.00	0.00	0.00	0.00	40°08'42.641"N	104°38'55.039"W	0.00	
16.00	0.000	39.600	16.00	0.00	0.00	0.00	40°08'42.641"N	104°38'55.039"W	0.00	Tie-On
61.00	0.200	39.600	61.00	-0.06	0.06	0.05	40°08'42.642"N	104°38'55.038"W	0.44	Begin CATHEDRAL MWD Surveys
171.00	0.300	71.100	171.00	-0.31	0.30	0.44	40°08'42.644"N	104°38'55.033"W	0.15	
249.00	0.300	79.600	249.00	-0.42	0.40	0.84	40°08'42.645"N	104°38'55.028"W	0.06	
329.00	0.100	98.300	329.00	-0.45	0.43	1.11	40°08'42.645"N	104°38'55.025"W	0.26	
409.00	0.100	278.300	409.00	-0.45	0.43	1.11	40°08'42.645"N	104°38'55.025"W	0.25	
489.00	0.200	348.900	489.00	-0.59	0.58	1.02	40°08'42.647"N	104°38'55.026"W	0.24	
569.00	0.100	54.400	569.00	-0.77	0.76	1.05	40°08'42.648"N	104°38'55.026"W	0.23	
649.00	0.200	34.300	649.00	-0.93	0.91	1.18	40°08'42.650"N	104°38'55.024"W	0.14	
729.00	0.300	52.300	729.00	-1.18	1.16	1.43	40°08'42.652"N	104°38'55.021"W	0.16	
795.00	0.500	2.500	794.99	-1.57	1.55	1.58	40°08'42.656"N	104°38'55.019"W	0.58	Tie-Into CATHEDRAL MWD Surveys
890.00	0.500	353.400	889.99	-2.40	2.38	1.55	40°08'42.664"N	104°38'55.019"W	0.08	Begin BHI MWD+IFR Surveys
1078.00	0.600	336.400	1077.98	-4.11	4.09	1.06	40°08'42.681"N	104°38'55.025"W	0.10	
1265.00	0.700	333.200	1264.97	-6.01	6.01	0.15	40°08'42.700"N	104°38'55.037"W	0.06	
1359.00	1.700	62.400	1358.95	-7.18	7.17	1.13	40°08'42.712"N	104°38'55.024"W	1.95	
1453.00	3.200	75.500	1452.87	-8.54	8.47	4.90	40°08'42.725"N	104°38'54.976"W	1.69	
1547.00	5.300	78.800	1546.60	-10.14	9.97	11.70	40°08'42.740"N	104°38'54.888"W	2.25	
1639.00	7.700	85.500	1638.01	-11.60	11.28	22.02	40°08'42.752"N	104°38'54.755"W	2.73	
1731.00	8.400	89.700	1729.10	-12.30	11.80	34.88	40°08'42.758"N	104°38'54.590"W	0.99	
1822.00	10.600	83.800	1818.85	-13.45	12.74	49.85	40°08'42.767"N	104°38'54.397"W	2.64	
1914.00	12.800	81.900	1908.93	-16.07	15.09	68.36	40°08'42.790"N	104°38'54.159"W	2.43	
2006.00	14.700	81.500	1998.29	-19.54	18.25	89.99	40°08'42.821"N	104°38'53.880"W	2.07	
2099.00	16.300	79.600	2087.91	-23.99	22.35	114.50	40°08'42.862"N	104°38'53.565"W	1.80	
2192.00	17.900	79.500	2176.79	-29.34	27.31	141.39	40°08'42.911"N	104°38'53.218"W	1.72	
2284.00	18.700	80.100	2264.14	-34.86	32.42	169.82	40°08'42.961"N	104°38'52.852"W	0.89	
2376.00	20.100	80.300	2350.91	-40.49	37.62	199.94	40°08'43.013"N	104°38'52.464"W	1.52	
2469.00	21.000	80.100	2437.99	-46.51	43.18	232.10	40°08'43.068"N	104°38'52.050"W	0.97	
2561.00	20.200	79.700	2524.11	-52.64	48.85	263.97	40°08'43.124"N	104°38'51.640"W	0.88	
2653.00	20.700	81.400	2610.31	-58.36	54.13	295.68	40°08'43.176"N	104°38'51.232"W	0.84	
2745.00	20.700	79.400	2696.37	-64.24	59.55	327.74	40°08'43.229"N	104°38'50.819"W	0.77	
2836.00	21.100	78.600	2781.39	-70.90	65.74	359.60	40°08'43.291"N	104°38'50.408"W	0.54	
2929.00	22.500	75.400	2867.74	-79.17	73.54	393.24	40°08'43.368"N	104°38'49.975"W	1.97	
3021.00	20.700	74.300	2953.27	-88.48	82.38	425.93	40°08'43.455"N	104°38'49.554"W	2.01	
3113.00	21.800	74.400	3039.02	-97.93	91.37	458.03	40°08'43.544"N	104°38'49.141"W	1.20	
3203.00	20.700	73.600	3122.90	-107.37	100.36	489.39	40°08'43.633"N	104°38'48.737"W	1.26	
3295.00	20.400	75.600	3209.04	-116.39	108.94	520.52	40°08'43.717"N	104°38'48.336"W	0.83	
3383.00	20.900	74.800	3291.39	-124.75	116.87	550.52	40°08'43.796"N	104°38'47.950"W	0.65	
3469.00	20.300	77.000	3371.89	-132.55	124.24	579.86	40°08'43.869"N	104°38'47.572"W	1.14	
3555.00	20.700	73.400	3452.45	-140.66	131.94	608.97	40°08'43.945"N	104°38'47.197"W	1.54	
3642.00	20.900	73.800	3533.78	-149.81	140.66	638.60	40°08'44.031"N	104°38'46.816"W	0.28	
3727.00	21.000	74.500	3613.16	-158.53	148.96	667.84	40°08'44.113"N	104°38'46.439"W	0.32	
3812.00	20.300	78.100	3692.70	-166.06	156.08	696.94	40°08'44.183"N	104°38'46.064"W	1.71	
3900.00	20.400	78.100	3775.21	-172.80	162.39	726.89	40°08'44.246"N	104°38'45.679"W	0.11	
3985.00	20.400	78.200	3854.88	-179.30	168.47	755.89	40°08'44.306"N	104°38'45.305"W	0.04	

Actual Wellpath Report

GREENLEAF 37C-15HZ AWP

Page 3 of 6

REFERENCE WELLPATH IDENTIFICATION

Operator	KERR-MCGEE OIL & GAS ONSHORE LP	Slot	SLOT#42 GREENLEAF 37C-15HZ (284'FNL & 2259'FEL, SEC.15)
Area	COLORADO	Well	GREENLEAF 37C-15HZ
Field	WELD COUNTY (KERR MCGEE)	Wellbore	GREENLEAF 37C-15HZ AWB <61-11310>
Facility	SEC.15-T2N-R65W		

WELLPATH DATA (114 stations) † = interpolated/extrapolated station

MD [ft]	Inclination [°]	Azimuth [°]	TVD [ft]	Vert Sect [ft]	North [ft]	East [ft]	Latitude	Longitude	DLS [°/100ft]	Comments
4070.00	19.100	76.200	3934.88	-186.04	174.82	783.89	40°08'44.368"N	104°38'44.945"W	1.72	
4156.00	19.800	79.400	4015.97	-192.48	180.85	811.88	40°08'44.428"N	104°38'44.584"W	1.48	
4242.00	19.800	80.200	4096.89	-198.05	186.01	840.55	40°08'44.479"N	104°38'44.215"W	0.32	
4328.00	19.200	78.700	4177.95	-203.71	191.26	868.77	40°08'44.531"N	104°38'43.852"W	0.91	
4413.00	17.900	78.900	4258.54	-209.34	196.52	895.29	40°08'44.583"N	104°38'43.510"W	1.53	
4498.00	17.700	78.800	4339.47	-214.73	201.54	920.79	40°08'44.632"N	104°38'43.182"W	0.24	
4583.00	16.200	78.100	4420.77	-220.03	206.50	945.07	40°08'44.681"N	104°38'42.869"W	1.78	
4668.00	14.200	80.100	4502.80	-224.58	210.73	966.94	40°08'44.723"N	104°38'42.588"W	2.43	
4754.00	13.000	76.600	4586.38	-228.92	214.79	986.74	40°08'44.763"N	104°38'42.333"W	1.69	
4839.00	11.400	75.500	4669.46	-233.49	219.11	1004.18	40°08'44.806"N	104°38'42.108"W	1.90	
4924.00	8.500	77.700	4753.17	-237.14	222.55	1018.45	40°08'44.840"N	104°38'41.924"W	3.44	
5009.00	6.100	77.800	4837.48	-239.58	224.84	1029.00	40°08'44.863"N	104°38'41.788"W	2.82	
5096.00	4.300	92.500	4924.12	-240.53	225.68	1036.78	40°08'44.871"N	104°38'41.688"W	2.56	
5182.00	3.300	81.100	5009.93	-240.85	225.92	1042.45	40°08'44.873"N	104°38'41.615"W	1.45	
5267.00	0.600	66.500	5094.88	-241.45	226.48	1045.27	40°08'44.879"N	104°38'41.579"W	3.20	
5693.00	0.600	359.500	5520.86	-244.60	229.60	1047.30	40°08'44.910"N	104°38'41.553"W	0.16	
6123.00	0.400	42.600	5950.84	-247.97	232.95	1048.30	40°08'44.943"N	104°38'41.540"W	0.10	
6550.00	1.100	45.600	6377.80	-251.99	236.92	1052.23	40°08'44.982"N	104°38'41.489"W	0.16	
6635.00	2.200	174.000	6462.78	-250.95	235.87	1052.99	40°08'44.972"N	104°38'41.480"W	3.54	
6679.00	2.500	177.300	6506.75	-249.15	234.07	1053.12	40°08'44.954"N	104°38'41.478"W	0.75	
6722.00	2.400	168.400	6549.71	-247.34	232.25	1053.35	40°08'44.936"N	104°38'41.475"W	0.91	
6808.00	10.300	168.200	6635.11	-238.06	222.94	1055.28	40°08'44.844"N	104°38'41.450"W	9.19	
6893.00	19.500	173.700	6717.17	-216.52	201.36	1058.40	40°08'44.631"N	104°38'41.410"W	10.94	
6980.00	27.200	180.900	6797.00	-182.17	166.98	1059.68	40°08'44.291"N	104°38'41.393"W	9.42	
7065.00	36.100	183.000	6869.29	-137.63	122.46	1058.07	40°08'43.851"N	104°38'41.414"W	10.55	
7150.00	43.100	184.900	6934.74	-83.57	68.45	1054.27	40°08'43.317"N	104°38'41.463"W	8.36	
7239.00	53.900	183.700	6993.63	-17.13	2.08	1049.34	40°08'42.661"N	104°38'41.527"W	12.18	
7324.00	60.500	182.300	7039.65	54.22	-69.23	1045.63	40°08'41.957"N	104°38'41.574"W	7.89	
7409.00	66.100	180.100	7077.83	130.12	-145.11	1044.08	40°08'41.207"N	104°38'41.595"W	6.98	
7494.00	73.700	178.900	7107.02	209.86	-224.87	1044.80	40°08'40.419"N	104°38'41.585"W	9.04	
7586.00	87.000	180.900	7122.41	300.34	-315.36	1044.92	40°08'39.524"N	104°38'41.584"W	14.61	
7626.00†	89.296	181.233	7123.70	340.32	-355.33	1044.18	40°08'39.129"N	104°38'41.593"W	5.80	7" Casing Point
7694.00	93.200	181.800	7122.22	408.28	-423.28	1042.38	40°08'38.458"N	104°38'41.617"W	5.80	
7780.00	92.500	181.700	7117.95	494.16	-509.13	1039.76	40°08'37.610"N	104°38'41.650"W	0.82	
7866.00	91.900	182.200	7114.65	580.08	-595.02	1036.83	40°08'36.761"N	104°38'41.688"W	0.91	
7951.00	90.800	182.100	7112.64	665.03	-679.93	1033.64	40°08'35.922"N	104°38'41.729"W	1.30	
8038.00	89.400	181.000	7112.49	752.02	-766.90	1031.29	40°08'35.062"N	104°38'41.760"W	2.05	
8123.00	89.100	181.100	7113.60	837.02	-851.88	1029.73	40°08'34.222"N	104°38'41.780"W	0.37	
8209.00	88.800	180.400	7115.18	923.00	-937.85	1028.61	40°08'33.373"N	104°38'41.794"W	0.89	
8296.00	87.900	179.900	7117.68	1009.96	-1024.82	1028.38	40°08'32.513"N	104°38'41.797"W	1.18	
8381.00	88.900	179.800	7120.06	1094.91	-1109.78	1028.60	40°08'31.674"N	104°38'41.794"W	1.18	
8468.00	89.000	180.800	7121.65	1181.89	-1196.77	1028.15	40°08'30.814"N	104°38'41.800"W	1.15	
8641.00	90.800	180.500	7121.95	1354.88	-1369.75	1026.18	40°08'29.105"N	104°38'41.826"W	1.05	
8812.00	89.300	181.300	7121.80	1525.88	-1540.72	1023.50	40°08'27.415"N	104°38'41.860"W	0.99	
8985.00	89.300	181.600	7123.92	1698.85	-1713.65	1019.12	40°08'25.706"N	104°38'41.917"W	0.17	

Actual Wellpath Report

GREENLEAF 37C-15HZ AWP

Page 4 of 6

REFERENCE WELLPATH IDENTIFICATION

Operator	KERR-MCGEE OIL & GAS ONSHORE LP	Slot	SLOT#42 GREENLEAF 37C-15HZ (284'FNL & 2259'FEL, SEC.15)
Area	COLORADO	Well	GREENLEAF 37C-15HZ
Field	WELD COUNTY (KERR MCGEE)	Wellbore	GREENLEAF 37C-15HZ AWB <61-11310>
Facility	SEC.15-T2N-R65W		

WELLPATH DATA (114 stations)

MD [ft]	Inclination [°]	Azimuth [°]	TVD [ft]	Vert Sect [ft]	North [ft]	East [ft]	Latitude	Longitude	DLS [°/100ft]	Comments
9070.00	88.500	181.200	7125.55	1783.83	-1798.61	1017.05	40°08'24.867"N	104°38'41.944"W	1.05	
9157.00	88.400	180.600	7127.90	1870.80	-1885.57	1015.68	40°08'24.007"N	104°38'41.961"W	0.70	
9245.00	89.600	180.300	7129.44	1958.78	-1973.55	1014.99	40°08'23.138"N	104°38'41.970"W	1.41	
9332.00	90.400	181.000	7129.44	2045.78	-2060.54	1014.00	40°08'22.278"N	104°38'41.983"W	1.22	
9504.00	90.700	181.100	7127.79	2217.77	-2232.50	1010.85	40°08'20.579"N	104°38'42.024"W	0.18	
9674.00	90.300	181.500	7126.30	2387.76	-2402.45	1006.99	40°08'18.900"N	104°38'42.073"W	0.33	
9847.00	89.700	183.400	7126.30	2560.68	-2575.29	999.60	40°08'17.192"N	104°38'42.169"W	1.15	
10107.00	90.100	183.000	7126.76	2820.46	-2834.88	985.08	40°08'14.626"N	104°38'42.356"W	0.22	
10279.00	88.700	181.200	7128.56	2992.39	-3006.74	978.78	40°08'12.928"N	104°38'42.437"W	1.33	
10451.00	88.900	181.000	7132.16	3164.35	-3178.67	975.48	40°08'11.229"N	104°38'42.479"W	0.16	
10538.00	89.000	180.400	7133.76	3251.34	-3265.65	974.42	40°08'10.369"N	104°38'42.493"W	0.70	
10625.00	90.000	179.800	7134.52	3338.32	-3352.65	974.27	40°08'09.510"N	104°38'42.495"W	1.34	
10710.00	90.800	179.000	7133.92	3423.30	-3437.64	975.16	40°08'08.670"N	104°38'42.484"W	1.33	
10881.00	88.100	178.300	7135.56	3594.15	-3608.57	979.18	40°08'06.981"N	104°38'42.432"W	1.63	
10966.00	89.400	178.500	7137.42	3679.05	-3693.51	981.56	40°08'06.141"N	104°38'42.401"W	1.55	
11053.00	90.200	179.600	7137.72	3766.01	-3780.50	983.00	40°08'05.282"N	104°38'42.383"W	1.56	
11138.00	90.400	180.400	7137.28	3850.99	-3865.49	983.00	40°08'04.442"N	104°38'42.383"W	0.97	
11223.00	91.200	180.200	7136.09	3935.98	-3950.48	982.55	40°08'03.602"N	104°38'42.389"W	0.97	
11310.00	91.500	180.600	7134.04	4022.96	-4037.46	981.95	40°08'02.742"N	104°38'42.397"W	0.57	
11397.00	92.100	181.800	7131.31	4109.91	-4124.39	980.13	40°08'01.883"N	104°38'42.420"W	1.54	
11569.00	89.400	181.600	7129.06	4281.86	-4296.29	975.02	40°08'00.185"N	104°38'42.486"W	1.57	
11657.00	90.200	181.100	7129.36	4369.85	-4384.26	972.95	40°07'59.315"N	104°38'42.513"W	1.07	
11761.00	89.700	181.100	7129.45	4473.85	-4488.24	970.95	40°07'58.288"N	104°38'42.538"W	0.48	Last BHI MWD+IFR Surveys
11814.00	89.700	181.100	7129.73	4526.85	-4541.23	969.94	40°07'57.764"N	104°38'42.551"W	0.00	Projection to Bit

HOLE & CASING SECTIONS - Ref Wellbore: GREENLEAF 37C-15HZ AWB <61-11310> Ref Wellpath: GREENLEAF 37C-15HZ AWP

String/Diameter	Start MD [ft]	End MD [ft]	Interval [ft]	Start TVD [ft]	End TVD [ft]	Start N/S [ft]	Start E/W [ft]	End N/S [ft]	End E/W [ft]
13.5in Open Hole	16.00	846.00	830.00	16.00	845.99	0.00	0.00	1.99	1.58
9.625in Casing Surface	16.00	831.00	815.00	16.00	830.99	0.00	0.00	1.86	1.58
8.75in Open Hole	846.00	7636.00	6790.00	845.99	7123.78	1.99	1.58	-365.33	1043.96
7in Casing Intermediate	16.00	7626.00	7610.00	16.00	7123.70	0.00	0.00	-355.33	1044.18
6.125in Open Hole	7636.00	11814.00	4178.00	7123.78	7129.73	-365.33	1043.96	-4541.23	969.94

Actual Wellpath Report

GREENLEAF 37C-15HZ AWP

Page 5 of 6

REFERENCE WELLPATH IDENTIFICATION

Operator	KERR-MCGEE OIL & GAS ONSHORE LP	Slot	SLOT#42 GREENLEAF 37C-15HZ (284'FNL & 2259'FEL, SEC.15)
Area	COLORADO	Well	GREENLEAF 37C-15HZ
Field	WELD COUNTY (KERR MCGEE)	Wellbore	GREENLEAF 37C-15HZ AWB <61-11310>
Facility	SEC.15-T2N-R65W		

TARGETS

Name	TVD [ft]	North [ft]	East [ft]	Grid East [US ft]	Grid North [US ft]	Latitude	Longitude	Shape
GREENLEAF 37C-15HZ LAND BOX	16.00	-0.02	-0.02	3238005.19	1296874.38	40°08'42.641"N	104°38'55.039"W	polygon
SEC.15-T2N-R65W LINES	16.00	-45.56	-39.43	3237966.21	1296828.47	40°08'42.191"N	104°38'55.547"W	polygon
GREENLEAF 37C015HZ BHL ON PLAT (460'FSL & 1255'FEL, SEC.15) REV-1	7129.00	-4566.06	979.79	3239028.75	1292318.15	40°07'57.519"N	104°38'42.425"W	point

WELLPATH COMPOSITION - Ref Wellbore: GREENLEAF 37C-15HZ AWB <61-11310> Ref Wellpath: GREENLEAF 37C-15HZ AWP

Start MD [ft]	End MD [ft]	Positional Uncertainty Model	Log Name/Comment	Wellbore
16.00	795.00	ISCWSA MWD, Rev. 3 (Standard)	CATHEDRAL ENERGY MWD SURVEYS <61-795>	GREENLEAF 37C-15HZ AWB <61-11310>
795.00	7586.00	NaviTrak (MAGCORR,IFR)	BHI MWD+IFR SURVEYS 8 3/4" HOLE <890-7586>	GREENLEAF 37C-15HZ AWB <61-11310>
7586.00	11761.00	NaviTrak (MAGCORR,IFR)	BHI MWD+IFR SURVEYS 6 1/8" HOLE <7694-11310>	GREENLEAF 37C-15HZ AWB <61-11310>
11761.00	11814.00	Blind Drilling (std)	Projection to bit	GREENLEAF 37C-15HZ AWB <61-11310>

Actual Wellpath Report

GREENLEAF 37C-15HZ AWP

Page 6 of 6

REFERENCE WELLPATH IDENTIFICATION

Operator	KERR-MCGEE OIL & GAS ONSHORE LP	Slot	SLOT#42 GREENLEAF 37C-15HZ (284'FNL & 2259'FEL, SEC.15)
Area	COLORADO	Well	GREENLEAF 37C-15HZ
Field	WELD COUNTY (KERR MCGEE)	Wellbore	GREENLEAF 37C-15HZ AWB <61-11310>
Facility	SEC.15-T2N-R65W		

WELLPATH COMMENTS

MD [ft]	Inclination [°]	Azimuth [°]	TVD [ft]	Comment
16.00	0.000	39.600	16.00	Tie-On
61.00	0.200	39.600	61.00	Begin CATHEDRAL MWD Surveys
795.00	0.500	2.500	794.99	Tie-Into CATHEDRAL MWD Surveys
890.00	0.500	353.400	889.99	Begin BHI MWD+IFR Surveys
7626.00	89.296	181.233	7123.70	7" Casing Point
11761.00	89.700	181.100	7129.45	Last BHI MWD+IFR Surveys
11814.00	89.700	181.100	7129.73	Projection to Bit