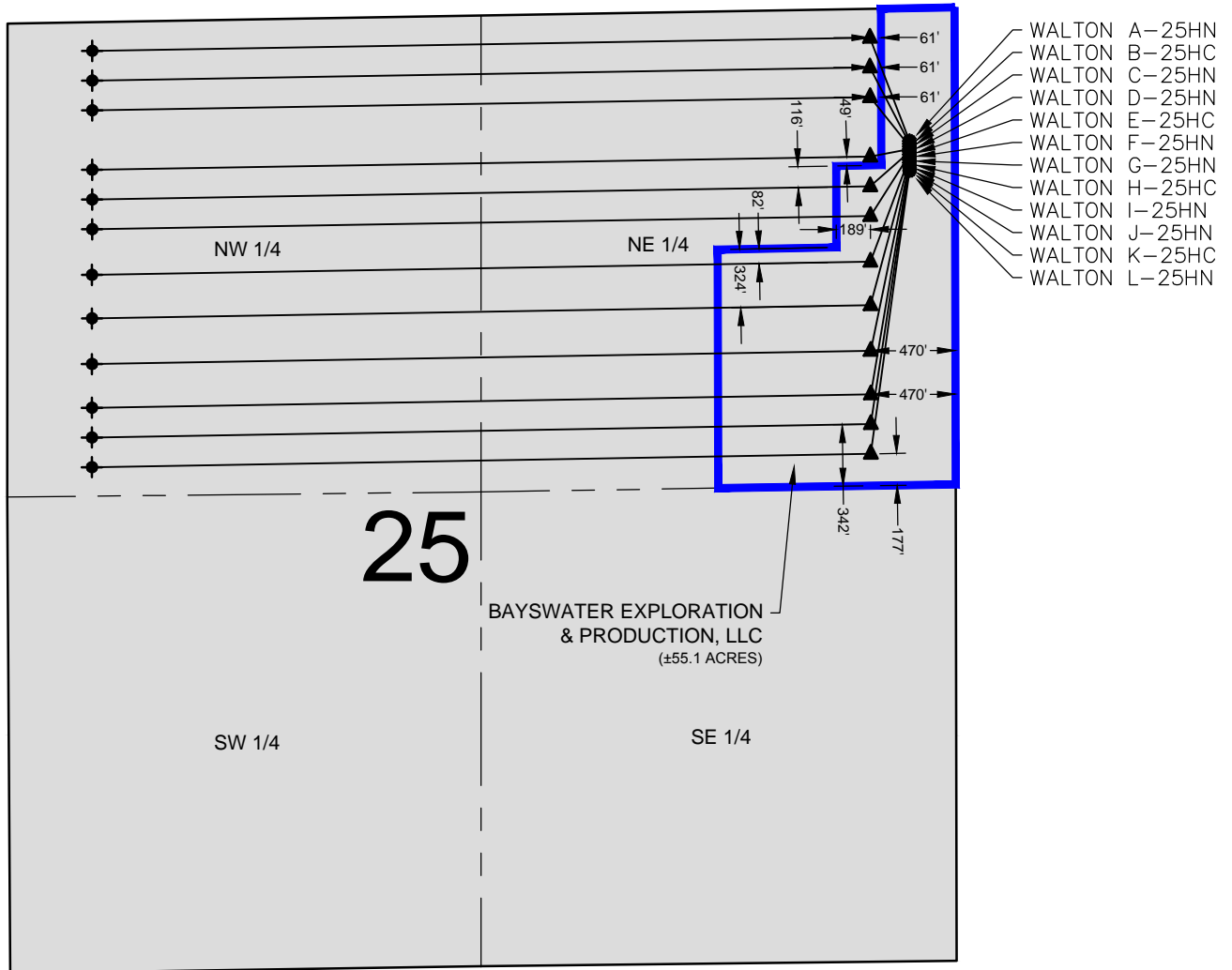


WALTON 25-D PAD LEASE DRAWING



WALTON A-25HN
WALTON B-25HC
WALTON C-25HN
WALTON D-25HN
WALTON E-25HC
WALTON F-25HN
WALTON G-25HN
WALTON H-25HC
WALTON I-25HN
WALTON J-25HN
WALTON K-25HC
WALTON L-25HN

NOTES:

WALTON A-25HN TO BE AT 737' FNL, 252' FEL.
BOTTOM HOLE AT 160' FNL & 470' FWL.
WALTON B-25HC TO BE AT 752' FNL, 252' FEL.
BOTTOM HOLE AT 325' FNL & 470' FWL.
WALTON C-25HN TO BE AT 767' FNL, 252' FEL.
BOTTOM HOLE AT 490' FNL & 470' FWL.
WALTON D-25HN TO BE AT 782' FNL, 252' FEL.
BOTTOM HOLE AT 820' FNL & 470' FWL.
WALTON E-25HC TO BE AT 797' FNL, 252' FEL.
BOTTOM HOLE AT 985' FNL & 470' FWL.
WALTON F-25HN TO BE AT 812' FNL, 252' FEL.
BOTTOM HOLE AT 1150' FNL & 470' FWL.
WALTON G-25HN TO BE AT 827' FNL, 252' FEL.
BOTTOM HOLE AT 1403' FNL & 470' FWL.
WALTON H-25HC TO BE AT 842' FNL, 252' FEL.
BOTTOM HOLE AT 1645' FNL & 470' FWL.
WALTON I-25HN TO BE AT 857' FNL, 252' FEL.
BOTTOM HOLE AT 1898' FNL & 470' FWL.
WALTON J-25HN TO BE AT 872' FNL, 252' FEL.
BOTTOM HOLE AT 2140' FNL & 470' FWL.
WALTON K-25HC TO BE AT 887' FNL, 252' FEL.
BOTTOM HOLE AT 2305' FNL & 470' FWL.
WALTON L-25HN TO BE AT 902' FNL, 252' FEL.
BOTTOM HOLE AT 2470' FNL & 470' FWL.

DISTANCE FROM COMPLETED PORTION OF WELL BORE TO LEASE LINE:

WALTON A-25HN 61' E
WALTON B-25HC 61' E
WALTON C-25HN 61' E
WALTON D-25HN 49' S
WALTON E-25HC 116' N
WALTON F-25HN 189' W
WALTON G-25HN 82' N
WALTON H-25HC 324' N
WALTON I-25HN 470' E
WALTON J-25HN 470' E
WALTON K-25HC 342' S
WALTON L-25HN 177' S

LEGEND

- = PROPOSED WELL
- ▲ = LANDING POINT
- ◆ = BOTTOM HOLE
- = LEASE LINES

PREPARED BY:



FIELD DATE:

12-12-14

DRAWING DATE:

03-02-15

BY:

KAD

CHECKED BY:

WDW

SITE NAME:

WALTON 25-D PAD

SURFACE LOCATION:

NE 1/4 NE 1/4, SEC. 25, T7N, R67W, 6TH P.M.
WELD COUNTY, COLORADO

PREPARED FOR:

