

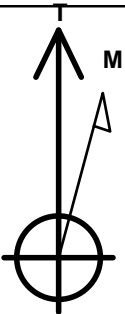
Bayswater Exploration & Production, LLC

Well Name: Walton H-25HC

Surface Location: Walton 25D Pad Sec.25-T7N-R67W
North American Datum 1983 , US State Plane 1983 , Colorado Northern Zone
Ground Elevation: 4979.0
+N/-S +E/-W Northing Easting Latitude Longitude Slot
0.0 0.0 1443970.99 3185386.74 40.550186 -104.832879
Original Well Elev WELL @ 5001.5ft (Original Well Elev)

WELLBORE TARGET DETAILS

Name	TVD	+N/-S	+E/-W	Shape
SHL 842'FNL, 252'FEL	1.0	0.0	0.0	Point
BHL 1645'FNL, 470'FWL	7325.0	-846.6	-4544.4	Point
LANDING PT. 1645'FNL, 470'FEL	7451.0	-805.1	-222.1	Point



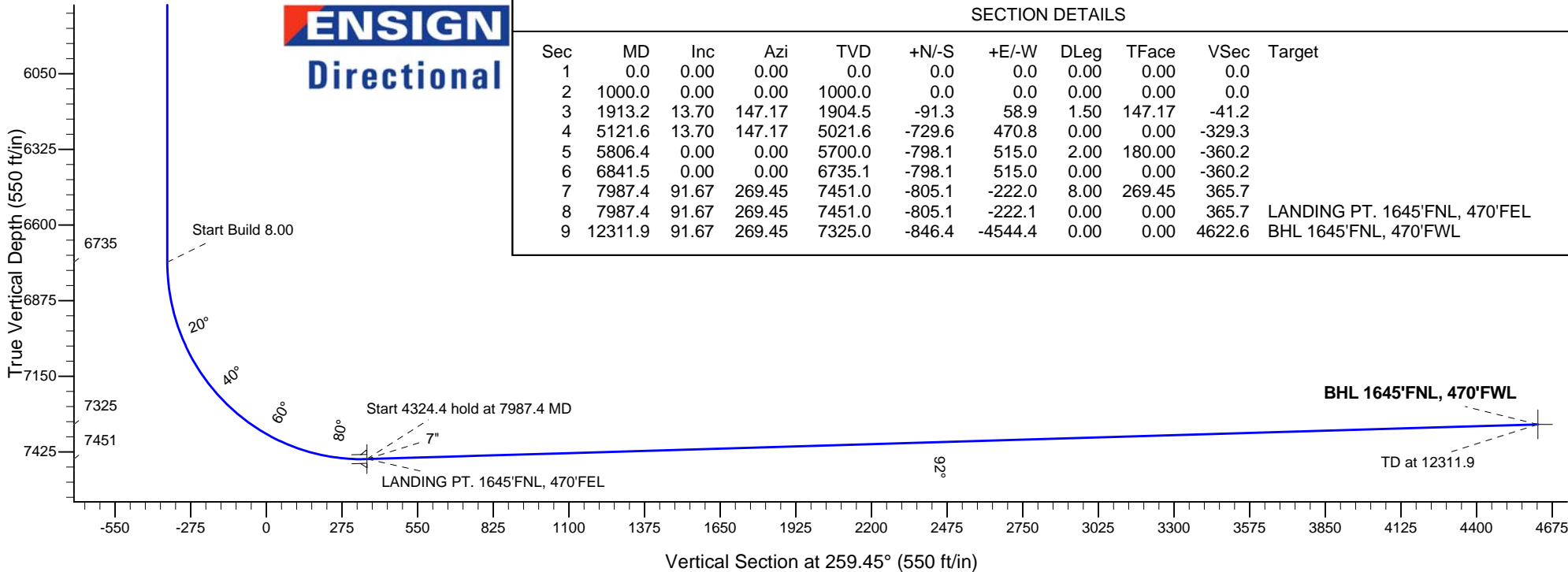
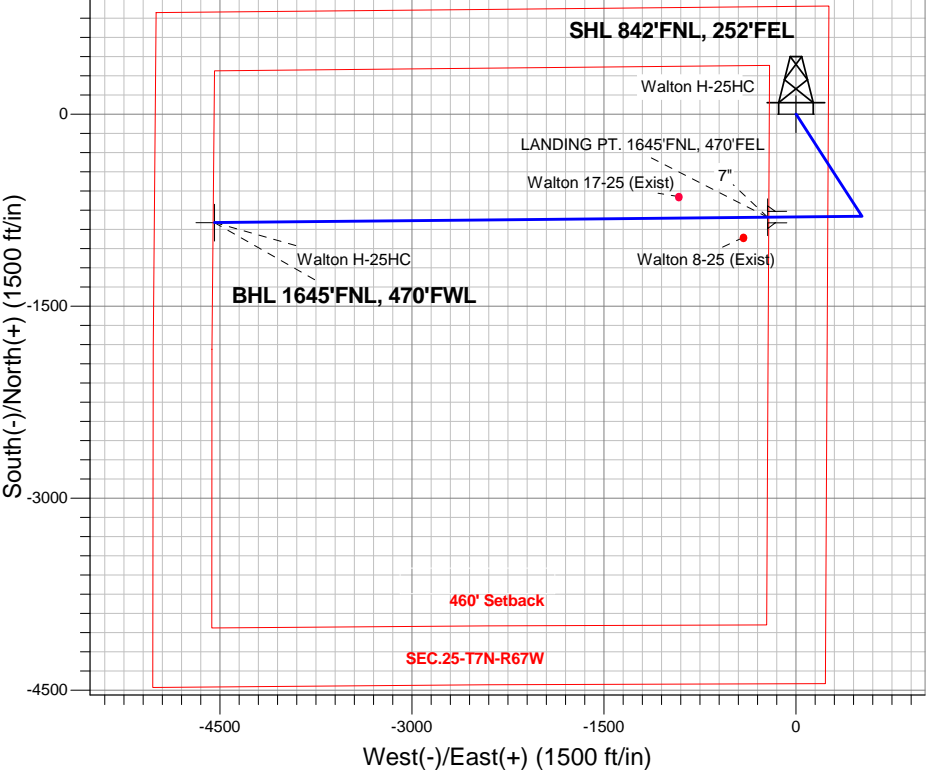
Azimuths to True North
Magnetic North: 8.43°

Magnetic Field
Strength: 52822.0nT
Dip Angle: 67.04°
Date: 1/20/2015
Model: IGRF2010

Walton 25D Pad Sec.25-T7N-R67W
Walton H-25HC
Plan #1 (1-14-15)
8:17, January 20 2015

ANNOTATIONS

TVD	MD	Annotation
1000.0	1000.0	KOP - Start Build 1.50
5021.6	5121.6	Start Drop -2.00
6735.1	6841.5	Start Build 8.00
7451.0	7987.4	Start 4324.4 hold at 7987.4 MD
7325.0	12311.9	TD at 12311.9



SECTION DETAILS

Sec	MD	Inc	Azi	TVD	+N/-S	+E/-W	DLeg	TFace	VSec	Target
1	0.0	0.00	0.00	0.0	0.0	0.0	0.00	0.00	0.0	
2	1000.0	0.00	0.00	1000.0	0.0	0.0	0.00	0.00	0.0	
3	1913.2	13.70	147.17	1904.5	-91.3	58.9	1.50	147.17	-41.2	
4	5121.6	13.70	147.17	5021.6	-729.6	470.8	0.00	0.00	-329.3	
5	5806.4	0.00	0.00	5700.0	-798.1	515.0	2.00	180.00	-360.2	
6	6841.5	0.00	0.00	6735.1	-798.1	515.0	0.00	0.00	-360.2	
7	7987.4	91.67	269.45	7451.0	-805.1	-222.0	8.00	269.45	365.7	
8	7987.4	91.67	269.45	7451.0	-805.1	-222.1	0.00	0.00	365.7	LANDING PT. 1645'FNL, 470'FEL
9	12311.9	91.67	269.45	7325.0	-846.4	-4544.4	0.00	0.00	4622.6	BHL 1645'FNL, 470'FWL



Bayswater Exploration & Production, LLC

SEC.25-T7N-R67W

Walton 25D Pad Sec.25-T7N-R67W

Walton H-25HC

Wellbore #1

Plan: Plan #1 (1-14-15)

Standard Planning Report

20 January, 2015



BAYSWATER
EXPLORATION & PRODUCTION, LLC

Database:	Landmark	Local Co-ordinate Reference:	Well Walton H-25HC
Company:	Bayswater Exploration & Production, LLC	TVD Reference:	WELL @ 5001.5ft (Original Well Elev)
Project:	SEC.25-T7N-R67W	MD Reference:	WELL @ 5001.5ft (Original Well Elev)
Site:	Walton 25D Pad Sec.25-T7N-R67W	North Reference:	True
Well:	Walton H-25HC	Survey Calculation Method:	Minimum Curvature
Wellbore:	Wellbore #1		
Design:	Plan #1 (1-14-15)		

Project	SEC.25-T7N-R67W, Weld County, Colorado		
Map System:	US State Plane 1983	System Datum:	Mean Sea Level
Geo Datum:	North American Datum 1983		Using Well Reference Point
Map Zone:	Colorado Northern Zone		Using geodetic scale factor

Site		Walton 25D Pad Sec.25-T7N-R67W			
Site Position: From:		Northing:	1,444,075.92 ft	Latitude:	40.550474
	Lat/Long	Easting:	3,185,386.51 ft	Longitude:	-104.832877
	Position Uncertainty:	0.0 ft	Slot Radius:	"	Grid Convergence:

Well	Walton H-25HC					
Well Position	+N/-S	-104.9 ft	Northing:	1,443,970.99 ft	Latitude:	40.550186
	+E/-W	-0.6 ft	Easting:	3,185,386.74 ft	Longitude:	-104.832879
Position Uncertainty		0.0 ft	Wellhead Elevation:	ft	Ground Level:	4,979.0 ft

Wellbore	Wellbore #1				
Magnetics	Model Name	Sample Date	Declination (°)	Dip Angle (°)	Field Strength (nT)
	IGRF2010	1/20/2015	8.43	67.04	52,822

Design	Plan #1 (1-14-15)			
Audit Notes:				
Version:	Phase:	PROTOTYPE	Tie On Depth:	0.0
Vertical Section:	Depth From (TVD) (ft)	+N/-S (ft)	+E/-W (ft)	Direction (°)
	0.0	0.0	0.0	259.45

Plan Sections										
Measured Depth (ft)	Inclination (°)	Azimuth (°)	Vertical Depth (ft)	+N/-S (ft)	+E/-W (ft)	Dogleg Rate (°/100ft)	Build Rate (°/100ft)	Turn Rate (°/100ft)	TFO (°)	Target
0.0	0.00	0.00	0.0	0.0	0.0	0.00	0.00	0.00	0.00	
1,000.0	0.00	0.00	1,000.0	0.0	0.0	0.00	0.00	0.00	0.00	
1,913.2	13.70	147.17	1,904.5	-91.3	58.9	1.50	1.50	0.00	147.17	
5,121.6	13.70	147.17	5,021.6	-729.6	470.8	0.00	0.00	0.00	0.00	
5,806.4	0.00	0.00	5,700.0	-798.1	515.0	2.00	-2.00	0.00	180.00	
6,841.5	0.00	0.00	6,735.1	-798.1	515.0	0.00	0.00	0.00	0.00	
7,987.4	91.67	269.45	7,451.0	-805.1	-222.0	8.00	8.00	0.00	269.45	
7,987.4	91.67	269.45	7,451.0	-805.1	-222.1	0.00	0.00	0.00	0.00	LANDING PT. 1645
12,311.9	91.67	269.45	7,325.0	-846.4	-4,544.4	0.00	0.00	0.00	0.00	BHL 1645'FNL, 470

Database:	Landmark	Local Co-ordinate Reference:	Well Walton H-25HC
Company:	Bayswater Exploration & Production, LLC	TVD Reference:	WELL @ 5001.5ft (Original Well Elev)
Project:	SEC.25-T7N-R67W	MD Reference:	WELL @ 5001.5ft (Original Well Elev)
Site:	Walton 25D Pad Sec.25-T7N-R67W	North Reference:	True
Well:	Walton H-25HC	Survey Calculation Method:	Minimum Curvature
Wellbore:	Wellbore #1		
Design:	Plan #1 (1-14-15)		

Planned Survey									
Measured Depth (ft)	Inclination (°)	Azimuth (°)	Vertical Depth (ft)	+N/-S (ft)	+E/-W (ft)	Vertical Section (ft)	Dogleg Rate (°/100ft)	Build Rate (°/100ft)	Turn Rate (°/100ft)
0.0	0.00	0.00	0.0	0.0	0.0	0.0	0.00	0.00	0.00
1.0	0.00	0.00	1.0	0.0	0.0	0.0	0.00	0.00	0.00
SHL 842'FNL, 252'FEL									
100.0	0.00	0.00	100.0	0.0	0.0	0.0	0.00	0.00	0.00
200.0	0.00	0.00	200.0	0.0	0.0	0.0	0.00	0.00	0.00
300.0	0.00	0.00	300.0	0.0	0.0	0.0	0.00	0.00	0.00
400.0	0.00	0.00	400.0	0.0	0.0	0.0	0.00	0.00	0.00
500.0	0.00	0.00	500.0	0.0	0.0	0.0	0.00	0.00	0.00
600.0	0.00	0.00	600.0	0.0	0.0	0.0	0.00	0.00	0.00
700.0	0.00	0.00	700.0	0.0	0.0	0.0	0.00	0.00	0.00
800.0	0.00	0.00	800.0	0.0	0.0	0.0	0.00	0.00	0.00
900.0	0.00	0.00	900.0	0.0	0.0	0.0	0.00	0.00	0.00
1,000.0	0.00	0.00	1,000.0	0.0	0.0	0.0	0.00	0.00	0.00
KOP - Start Build 1.50									
1,100.0	1.50	147.17	1,100.0	-1.1	0.7	-0.5	1.50	1.50	0.00
1,200.0	3.00	147.17	1,199.9	-4.4	2.8	-2.0	1.50	1.50	0.00
1,300.0	4.50	147.17	1,299.7	-9.9	6.4	-4.5	1.50	1.50	0.00
1,400.0	6.00	147.17	1,399.3	-17.6	11.3	-7.9	1.50	1.50	0.00
1,500.0	7.50	147.17	1,498.6	-27.5	17.7	-12.4	1.50	1.50	0.00
1,600.0	9.00	147.17	1,597.5	-39.5	25.5	-17.8	1.50	1.50	0.00
1,700.0	10.50	147.17	1,696.1	-53.7	34.7	-24.3	1.50	1.50	0.00
1,800.0	12.00	147.17	1,794.2	-70.1	45.3	-31.6	1.50	1.50	0.00
1,900.0	13.50	147.17	1,891.7	-88.7	57.2	-40.0	1.50	1.50	0.00
1,913.2	13.70	147.17	1,904.5	-91.3	58.9	-41.2	1.50	1.50	0.00
2,000.0	13.70	147.17	1,988.9	-108.6	70.1	-49.0	0.00	0.00	0.00
2,100.0	13.70	147.17	2,086.0	-128.5	82.9	-58.0	0.00	0.00	0.00
2,200.0	13.70	147.17	2,183.2	-148.4	95.7	-66.9	0.00	0.00	0.00
2,300.0	13.70	147.17	2,280.3	-168.2	108.6	-75.9	0.00	0.00	0.00
2,400.0	13.70	147.17	2,377.5	-188.1	121.4	-84.9	0.00	0.00	0.00
2,500.0	13.70	147.17	2,474.6	-208.0	134.2	-93.9	0.00	0.00	0.00
2,600.0	13.70	147.17	2,571.8	-227.9	147.1	-102.9	0.00	0.00	0.00
2,700.0	13.70	147.17	2,668.9	-247.8	159.9	-111.8	0.00	0.00	0.00
2,800.0	13.70	147.17	2,766.1	-267.7	172.8	-120.8	0.00	0.00	0.00
2,900.0	13.70	147.17	2,863.3	-287.6	185.6	-129.8	0.00	0.00	0.00
3,000.0	13.70	147.17	2,960.4	-307.5	198.4	-138.8	0.00	0.00	0.00
3,100.0	13.70	147.17	3,057.6	-327.4	211.3	-147.8	0.00	0.00	0.00
3,200.0	13.70	147.17	3,154.7	-347.3	224.1	-156.7	0.00	0.00	0.00
3,300.0	13.70	147.17	3,251.9	-367.2	237.0	-165.7	0.00	0.00	0.00
3,400.0	13.70	147.17	3,349.0	-387.1	249.8	-174.7	0.00	0.00	0.00
3,500.0	13.70	147.17	3,446.2	-407.0	262.6	-183.7	0.00	0.00	0.00
3,600.0	13.70	147.17	3,543.4	-426.9	275.5	-192.6	0.00	0.00	0.00
3,700.0	13.70	147.17	3,640.5	-446.8	288.3	-201.6	0.00	0.00	0.00
3,800.0	13.70	147.17	3,737.7	-466.7	301.2	-210.6	0.00	0.00	0.00
3,900.0	13.70	147.17	3,834.8	-486.6	314.0	-219.6	0.00	0.00	0.00
4,000.0	13.70	147.17	3,932.0	-506.5	326.8	-228.6	0.00	0.00	0.00
4,100.0	13.70	147.17	4,029.1	-526.4	339.7	-237.5	0.00	0.00	0.00
4,200.0	13.70	147.17	4,126.3	-546.3	352.5	-246.5	0.00	0.00	0.00
4,300.0	13.70	147.17	4,223.4	-566.2	365.3	-255.5	0.00	0.00	0.00
4,400.0	13.70	147.17	4,320.6	-586.1	378.2	-264.5	0.00	0.00	0.00
4,500.0	13.70	147.17	4,417.8	-606.0	391.0	-273.5	0.00	0.00	0.00
4,600.0	13.70	147.17	4,514.9	-625.9	403.9	-282.4	0.00	0.00	0.00
4,700.0	13.70	147.17	4,612.1	-645.8	416.7	-291.4	0.00	0.00	0.00
4,800.0	13.70	147.17	4,709.2	-665.7	429.5	-300.4	0.00	0.00	0.00
4,900.0	13.70	147.17	4,806.4	-685.6	442.4	-309.4	0.00	0.00	0.00

Database:	Landmark	Local Co-ordinate Reference:	Well Walton H-25HC
Company:	Bayswater Exploration & Production, LLC	TVD Reference:	WELL @ 5001.5ft (Original Well Elev)
Project:	SEC.25-T7N-R67W	MD Reference:	WELL @ 5001.5ft (Original Well Elev)
Site:	Walton 25D Pad Sec.25-T7N-R67W	North Reference:	True
Well:	Walton H-25HC	Survey Calculation Method:	Minimum Curvature
Wellbore:	Wellbore #1		
Design:	Plan #1 (1-14-15)		

Planned Survey									
Measured Depth (ft)	Inclination (°)	Azimuth (°)	Vertical Depth (ft)	+N/-S (ft)	+E/-W (ft)	Vertical Section (ft)	Dogleg Rate (°/100ft)	Build Rate (°/100ft)	Turn Rate (°/100ft)
5,000.0	13.70	147.17	4,903.5	-705.5	455.2	-318.3	0.00	0.00	0.00
5,100.0	13.70	147.17	5,000.7	-725.4	468.1	-327.3	0.00	0.00	0.00
5,121.6	13.70	147.17	5,021.7	-729.6	470.8	-329.3	0.00	0.00	0.00
Start Drop -2.00									
5,200.0	12.13	147.17	5,098.1	-744.4	480.3	-335.9	2.00	-2.00	0.00
5,300.0	10.13	147.17	5,196.2	-760.6	490.8	-343.2	2.00	-2.00	0.00
5,400.0	8.13	147.17	5,294.9	-773.9	499.4	-349.2	2.00	-2.00	0.00
5,500.0	6.13	147.17	5,394.2	-784.3	506.1	-353.9	2.00	-2.00	0.00
5,600.0	4.13	147.17	5,493.8	-791.9	511.0	-357.3	2.00	-2.00	0.00
5,700.0	2.13	147.17	5,593.6	-796.4	513.9	-359.4	2.00	-2.00	0.00
5,800.0	0.13	147.17	5,693.6	-798.1	515.0	-360.2	2.00	-2.00	0.00
5,806.4	0.00	0.00	5,700.0	-798.1	515.0	-360.2	2.00	-2.00	0.00
5,900.0	0.00	0.00	5,793.6	-798.1	515.0	-360.2	0.00	0.00	0.00
6,000.0	0.00	0.00	5,893.6	-798.1	515.0	-360.2	0.00	0.00	0.00
6,100.0	0.00	0.00	5,993.6	-798.1	515.0	-360.2	0.00	0.00	0.00
6,200.0	0.00	0.00	6,093.6	-798.1	515.0	-360.2	0.00	0.00	0.00
6,300.0	0.00	0.00	6,193.6	-798.1	515.0	-360.2	0.00	0.00	0.00
6,400.0	0.00	0.00	6,293.6	-798.1	515.0	-360.2	0.00	0.00	0.00
6,500.0	0.00	0.00	6,393.6	-798.1	515.0	-360.2	0.00	0.00	0.00
6,600.0	0.00	0.00	6,493.6	-798.1	515.0	-360.2	0.00	0.00	0.00
6,700.0	0.00	0.00	6,593.6	-798.1	515.0	-360.2	0.00	0.00	0.00
6,800.0	0.00	0.00	6,693.6	-798.1	515.0	-360.2	0.00	0.00	0.00
6,841.5	0.00	0.00	6,735.1	-798.1	515.0	-360.2	0.00	0.00	0.00
Start Build 8.00									
6,900.0	4.68	269.45	6,793.5	-798.1	512.6	-357.8	8.00	8.00	0.00
7,000.0	12.68	269.45	6,892.3	-798.3	497.5	-343.0	8.00	8.00	0.00
7,100.0	20.68	269.45	6,988.0	-798.5	468.9	-314.7	8.00	8.00	0.00
7,200.0	28.68	269.45	7,078.8	-798.9	427.2	-273.6	8.00	8.00	0.00
7,300.0	36.68	269.45	7,162.9	-799.5	373.2	-220.5	8.00	8.00	0.00
7,400.0	44.68	269.45	7,238.7	-800.1	308.1	-156.4	8.00	8.00	0.00
7,500.0	52.68	269.45	7,304.7	-800.8	233.0	-82.5	8.00	8.00	0.00
7,600.0	60.68	269.45	7,359.5	-801.6	149.6	-0.3	8.00	8.00	0.00
7,700.0	68.68	269.45	7,402.3	-802.5	59.2	88.7	8.00	8.00	0.00
7,800.0	76.68	269.45	7,432.0	-803.4	-36.1	182.6	8.00	8.00	0.00
7,900.0	84.68	269.45	7,448.2	-804.3	-134.7	279.7	8.00	8.00	0.00
7,987.4	91.67	269.45	7,451.0	-805.1	-222.1	365.7	8.00	8.00	0.00
Start 4324.4 hold at 7987.4 MD - 7" - LANDING PT. 1645'FNL, 470'FEL									
8,000.0	91.67	269.45	7,450.6	-805.3	-234.6	378.1	0.01	0.01	0.00
8,100.0	91.67	269.45	7,447.7	-806.2	-334.6	476.5	0.00	0.00	0.00
8,200.0	91.67	269.45	7,444.8	-807.2	-434.5	575.0	0.00	0.00	0.00
8,300.0	91.67	269.45	7,441.9	-808.1	-534.5	673.4	0.00	0.00	0.00
8,400.0	91.67	269.45	7,439.0	-809.1	-634.4	771.9	0.00	0.00	0.00
8,500.0	91.67	269.45	7,436.1	-810.0	-734.4	870.3	0.00	0.00	0.00
8,600.0	91.67	269.45	7,433.1	-811.0	-834.3	968.7	0.00	0.00	0.00
8,700.0	91.67	269.45	7,430.2	-811.9	-934.3	1,067.2	0.00	0.00	0.00
8,800.0	91.67	269.45	7,427.3	-812.9	-1,034.2	1,165.6	0.00	0.00	0.00
8,900.0	91.67	269.45	7,424.4	-813.9	-1,134.2	1,264.0	0.00	0.00	0.00
9,000.0	91.67	269.45	7,421.5	-814.8	-1,234.2	1,362.5	0.00	0.00	0.00
9,100.0	91.67	269.45	7,418.6	-815.8	-1,334.1	1,460.9	0.00	0.00	0.00
9,200.0	91.67	269.45	7,415.7	-816.7	-1,434.1	1,559.4	0.00	0.00	0.00
9,300.0	91.67	269.45	7,412.7	-817.7	-1,534.0	1,657.8	0.00	0.00	0.00
9,400.0	91.67	269.45	7,409.8	-818.6	-1,634.0	1,756.2	0.00	0.00	0.00
9,500.0	91.67	269.45	7,406.9	-819.6	-1,733.9	1,854.7	0.00	0.00	0.00

Database:	Landmark	Local Co-ordinate Reference:	Well Walton H-25HC
Company:	Bayswater Exploration & Production, LLC	TVD Reference:	WELL @ 5001.5ft (Original Well Elev)
Project:	SEC.25-T7N-R67W	MD Reference:	WELL @ 5001.5ft (Original Well Elev)
Site:	Walton 25D Pad Sec.25-T7N-R67W	North Reference:	True
Well:	Walton H-25HC	Survey Calculation Method:	Minimum Curvature
Wellbore:	Wellbore #1		
Design:	Plan #1 (1-14-15)		

Planned Survey										
Measured Depth (ft)	Inclination (°)	Azimuth (°)	Vertical Depth (ft)	+N/-S (ft)	+E/-W (ft)	Vertical Section (ft)	Dogleg Rate (°/100ft)	Build Rate (°/100ft)	Turn Rate (°/100ft)	
9,600.0	91.67	269.45	7,404.0	-820.5	-1,833.9	1,953.1	0.00	0.00	0.00	
9,700.0	91.67	269.45	7,401.1	-821.5	-1,933.8	2,051.5	0.00	0.00	0.00	
9,800.0	91.67	269.45	7,398.2	-822.4	-2,033.8	2,150.0	0.00	0.00	0.00	
9,900.0	91.67	269.45	7,395.3	-823.4	-2,133.7	2,248.4	0.00	0.00	0.00	
10,000.0	91.67	269.45	7,392.3	-824.4	-2,233.7	2,346.9	0.00	0.00	0.00	
10,100.0	91.67	269.45	7,389.4	-825.3	-2,333.6	2,445.3	0.00	0.00	0.00	
10,200.0	91.67	269.45	7,386.5	-826.3	-2,433.6	2,543.7	0.00	0.00	0.00	
10,300.0	91.67	269.45	7,383.6	-827.2	-2,533.5	2,642.2	0.00	0.00	0.00	
10,400.0	91.67	269.45	7,380.7	-828.2	-2,633.5	2,740.6	0.00	0.00	0.00	
10,500.0	91.67	269.45	7,377.8	-829.1	-2,733.4	2,839.1	0.00	0.00	0.00	
10,600.0	91.67	269.45	7,374.9	-830.1	-2,833.4	2,937.5	0.00	0.00	0.00	
10,700.0	91.67	269.45	7,371.9	-831.0	-2,933.4	3,035.9	0.00	0.00	0.00	
10,800.0	91.67	269.45	7,369.0	-832.0	-3,033.3	3,134.4	0.00	0.00	0.00	
10,900.0	91.67	269.45	7,366.1	-833.0	-3,133.3	3,232.8	0.00	0.00	0.00	
11,000.0	91.67	269.45	7,363.2	-833.9	-3,233.2	3,331.2	0.00	0.00	0.00	
11,100.0	91.67	269.45	7,360.3	-834.9	-3,333.2	3,429.7	0.00	0.00	0.00	
11,200.0	91.67	269.45	7,357.4	-835.8	-3,433.1	3,528.1	0.00	0.00	0.00	
11,300.0	91.67	269.45	7,354.5	-836.8	-3,533.1	3,626.6	0.00	0.00	0.00	
11,400.0	91.67	269.45	7,351.5	-837.7	-3,633.0	3,725.0	0.00	0.00	0.00	
11,500.0	91.67	269.45	7,348.6	-838.7	-3,733.0	3,823.4	0.00	0.00	0.00	
11,600.0	91.67	269.45	7,345.7	-839.6	-3,832.9	3,921.9	0.00	0.00	0.00	
11,700.0	91.67	269.45	7,342.8	-840.6	-3,932.9	4,020.3	0.00	0.00	0.00	
11,800.0	91.67	269.45	7,339.9	-841.5	-4,032.8	4,118.7	0.00	0.00	0.00	
11,900.0	91.67	269.45	7,337.0	-842.5	-4,132.8	4,217.2	0.00	0.00	0.00	
12,000.0	91.67	269.45	7,334.1	-843.5	-4,232.7	4,315.6	0.00	0.00	0.00	
12,100.0	91.67	269.45	7,331.1	-844.4	-4,332.7	4,414.1	0.00	0.00	0.00	
12,200.0	91.67	269.45	7,328.2	-845.4	-4,432.6	4,512.5	0.00	0.00	0.00	
12,300.0	91.67	269.45	7,325.3	-846.3	-4,532.6	4,610.9	0.00	0.00	0.00	
12,311.8	91.67	269.45	7,325.0	-846.4	-4,544.4	4,622.6	0.00	0.00	0.00	
BHL 1645°FNL, 470°FWL										

Targets										
Target Name	Dip Angle (°)	Dip Dir. (°)	TVD (ft)	+N/-S (ft)	+E/-W (ft)	Northing (ft)	Easting (ft)	Latitude	Longitude	
- hit/miss target										
- Shape										
LANDING PT. 1645'F	0.00	0.00	7,451.0	-805.1	-222.1	1,443,164.23	3,185,170.76	40.547976	-104.833678	
- plan hits target center										
- Point										
BHL 1645°FNL, 470'F	0.00	0.00	7,325.0	-846.6	-4,544.4	1,443,090.24	3,180,848.97	40.547861	-104.849231	
- plan misses target center by 0.2ft at 12311.8ft MD (7325.0 TVD, -846.4 N, -4544.4 E)										
- Point										
SHL 842°FNL, 252'FE	0.00	0.00	1.0	0.0	0.0	1,443,971.00	3,185,386.74	40.550186	-104.832879	
- plan hits target center										
- Point										

Database:	Landmark	Local Co-ordinate Reference:	Well Walton H-25HC
Company:	Bayswater Exploration & Production, LLC	TVD Reference:	WELL @ 5001.5ft (Original Well Elev)
Project:	SEC.25-T7N-R67W	MD Reference:	WELL @ 5001.5ft (Original Well Elev)
Site:	Walton 25D Pad Sec.25-T7N-R67W	North Reference:	True
Well:	Walton H-25HC	Survey Calculation Method:	Minimum Curvature
Wellbore:	Wellbore #1		
Design:	Plan #1 (1-14-15)		

Casing Points					
Measured Depth (ft)	Vertical Depth (ft)	Name		Casing Diameter (")	Hole Diameter (")
7,987.4	7,451.0	7"		7	7-1/2

Plan Annotations					
Measured Depth (ft)	Vertical Depth (ft)	Local Coordinates		Comment	
		+N/-S (ft)	+E/-W (ft)		
1,000.0	1,000.0	0.0	0.0	KOP - Start Build 1.50	
5,121.6	5,021.6	-91.3	58.9	Start Drop -2.00	
6,841.5	6,735.1	-729.6	470.8	Start Build 8.00	
7,987.4	7,451.0	-798.1	515.0	Start 4324.4 hold at 7987.4 MD	
12,311.9	7,325.0	-798.1	515.0	TD at 12311.9	