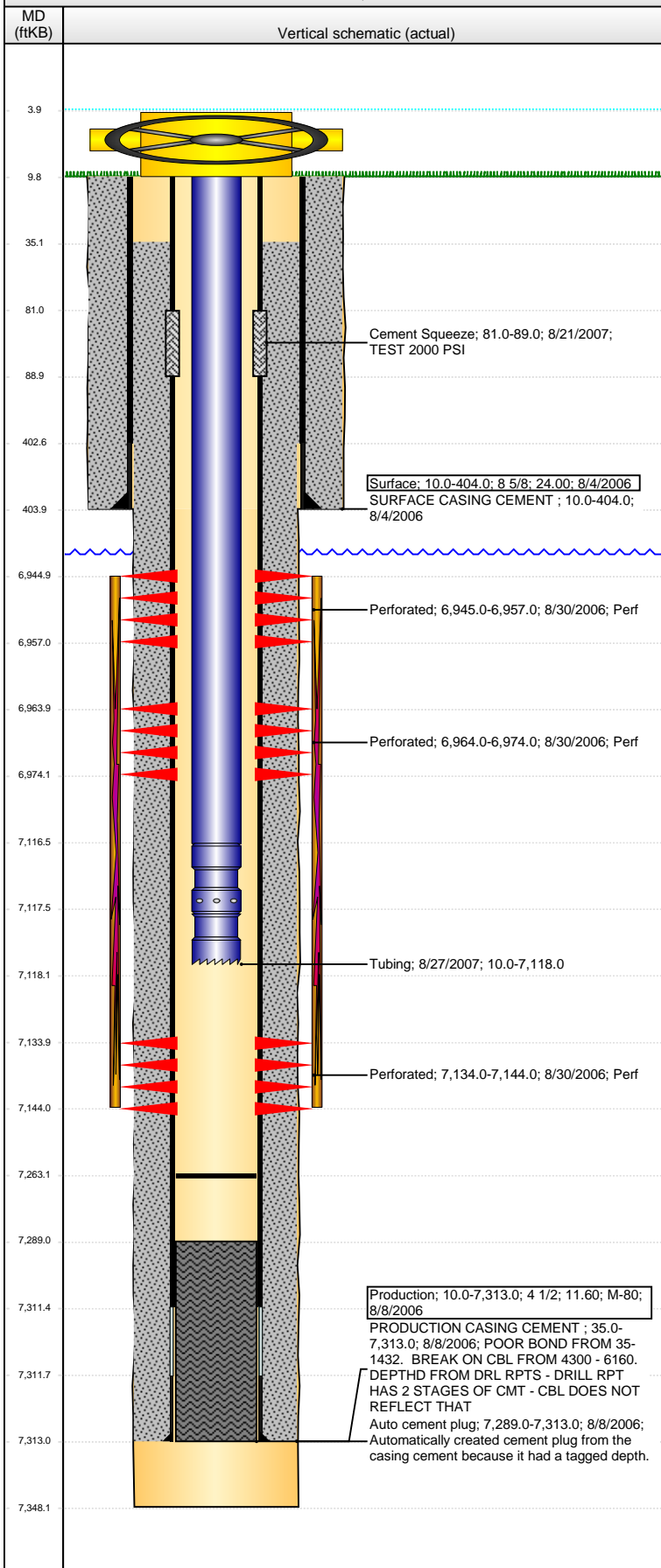


Well Name: KARLBERG STATE 36-44

VERTICAL - ORIGINAL HOLE, 3/6/2015 10:06:11 AM



Well Header

API 05-123-23747	Business Unit DJ BASIN	District 15	Well Config VERTICAL
Original KB Elevation (ft) 4,811.00	KB - GL / MSL (ftKB) 10.00	Spud Date 8/4/2006	P & A Date

Comment

SURF HOLE DISCREPANCY: ST COMP RPT = 857 FSL & 754 FEL, PERMIT & LOGS = 860 FSL & 470 FEL. SURF HOLE DEPTH DISCREPANCY: DRL SUMMARY RPT = 744, DRL RPTS = 414 - WENT WITH 414. TD DATE DISCREPANCY: DRL RPT = 8/7/06 & ST RPT = 8/8/06

CASING RPR - HOLES FOUND BTWN 81-86. SQZ'D THE HOLES WITH .40 BBLs (17 SXS) OF G CMT

Directions To Well

Congressional Location

Quarter 1	Quarter 2	Quarter 3	Quarter 4	Section	Township	Twntshp N...	Range	Rng E/W Dir
	NE	SE	SE	36	7	N	65	W

Bottom Hole Location

North-South Distance (ft)	From N or S Line	East-West Distance (ft)	From E or W Line
---------------------------	------------------	-------------------------	------------------

Plug Back Total Depths

Date	Depth (ftKB)	Method	Com
8/28/2006	7,289.0	CASED HOLE LOG	DEPTH LOGGER FROM CBL
3/17/2007	7,263.0	TAG	CLEAN OUT TO SET RBP

Wellbore Sections

Section Des	Size (in)	Act Top, MD (ftKB)	Act Btm, MD (ftKB)
SURFACE	12 1/4	10.0	404.0
PRODUCTION	7 7/8	404.0	7,348.0

Zone Statuses

Zone Name	Status Date	Status	Job
CODELL	12/8/2006	PR	DRILLING/COMPLETION - ORIGINAL, 8/4/2006 00:00
NIOBRARA	12/8/2006	PR	DRILLING/COMPLETION - ORIGINAL, 8/4/2006 00:00

Casing Strings

Surface, 404.0ftKB

Casing Description	Run Date	OD (in)	Wt/Len (l...)	Grade	Top, MD (ft...)	MD (ftKB)
Surface	8/4/2006	8 5/8	24.00		10.0	404.0

Production, 7,313.0ftKB

Casing Description	Run Date	OD (in)	Wt/Len (l...)	Grade	Top, MD (ft...)	MD (ftKB)
Production	8/8/2006	4 1/2	11.60	M-80	10.0	7,313.0

Cement

Description	Top Depth (ftKB)	Bottom Depth (ftKB)
SURFACE CASING CEMENT	10.0	404.0
PRODUCTION CASING CEMENT	35.0	7,313.0
Cement Squeeze	81.0	89.0

Tubing Strings

Tubing Description	Run Date	String...	ID (in)	Wt (lb/ft)	Grade	Len (ft)	Set De...
Tubing	8/27/2007	2 3/8				7,108.00	

Tubing Components

Item Des	OD (in)	Wt (lb/ft)	Grade	Jts	Len (ft)	Btm (ftKB)	Btm (TVD) (ftKB)
Tubing	2 3/8			213	7,106.50	7,116.5	
Pump Seating Nipple	2 3/8	1.10			1.00	7,117.5	
Notched collar	2 3/8				0.50	7,118.0	

Perforation Data

Zone	Bnch/St g	Entered Shot Total	Top (ftKB)	Btm (ftKB)	Date
NIOBRARA, ORIGINAL HOLE	B	48	6,945.00	6,957.00	8/30/2006
NIOBRARA, ORIGINAL HOLE	B	40	6,964.00	6,974.00	8/30/2006
CODELL, ORIGINAL HOLE		40	7,134.00	7,144.00	8/30/2006

Stimulations & Treatments

Date	Zone	Primary Job Type
8/31/2006	NIOBRARA-CODELL, ORIGINAL HOLE	DRILLING/COMPLETION - ORIGINAL
Technical Result	Tech Result Details	Tech Result Note

Comment
LIMITED ENTRY

Well Name: KARLBERG STATE 36-44

VERTICAL - ORIGINAL HOLE, 3/6/2015 10:06:14 AM

Other In Hole

Run Date	Des	OD (in)	Top (ftKB)	Btm (ftKB)

Logs

Date	Type	Top, MD (ftKB)	Btm, MD (ftKB)
8/7/2006	COMPENSATED DENSITY	3,700.0	7,320.0
8/7/2006	INDUCTION	404.0	7,340.0
8/28/2006	CBL/CCL/GR	6,200.0	7,286.0
1/16/2015	GYRO	10.0	7,000.0

