

# **EXTRACTION OIL & GAS**

**WELD COUNTY, COLORADO (NAD 83)**

**NW SW SEC. 5 T2N R68W 6th P.M.**

**FAIRVIEW 4**

**ORIGINAL WELLBORE**

**09 November, 2014**

**Plan: PROPOSAL #2**

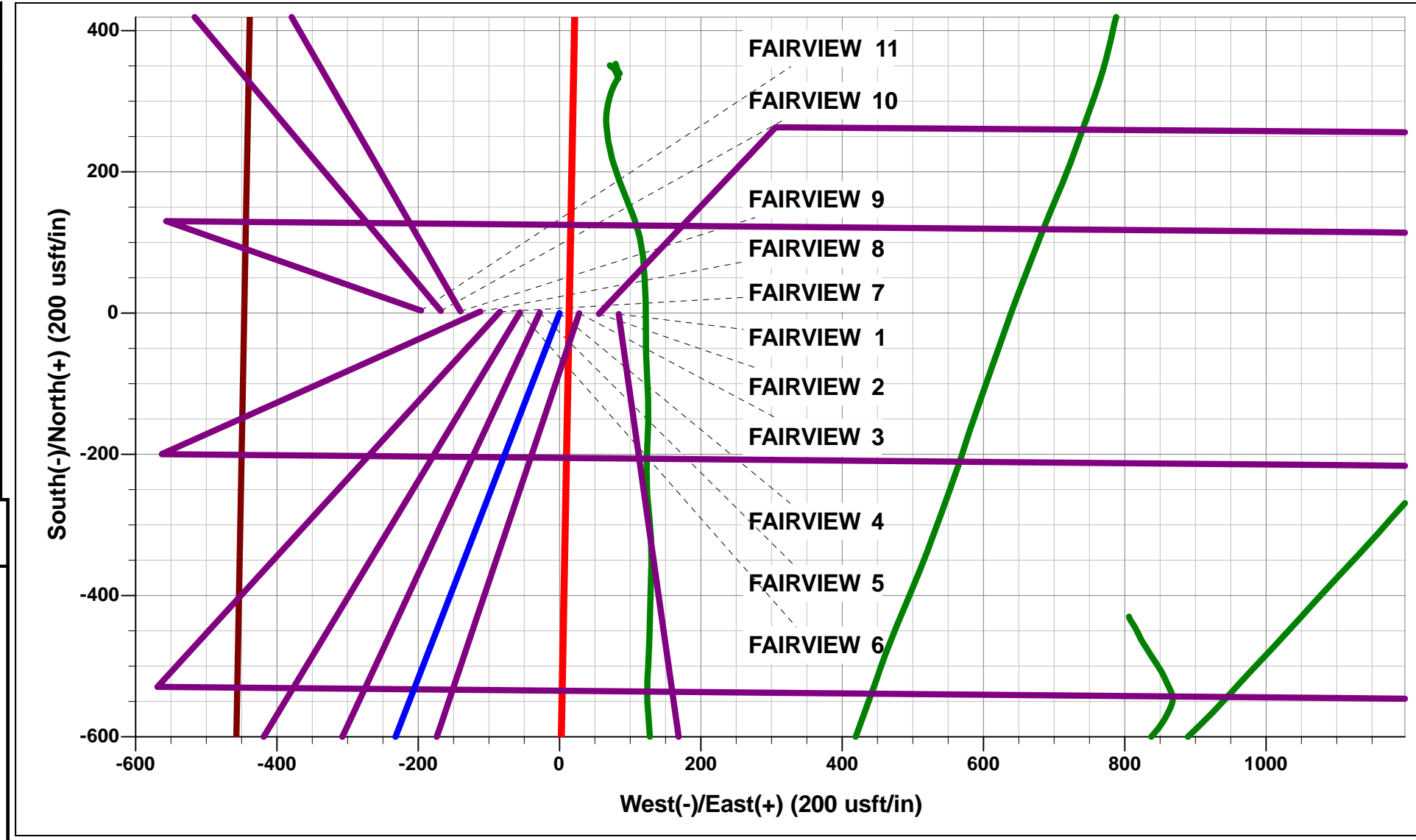




Project: WELD COUNTY, COLORADO (NAD 83)  
Site: NW SW SEC. 5 T2N R68W 6th P.M.  
Well: FAIRVIEW 4  
Wellbore: ORIGINAL WELLBORE  
Design: PROPOSAL #2

ANNOTATIONS										
TVD	MD	Inc	Azi	+N/-S	+E/-W	VSect	Dep	Annotation		
1650.0	1650.0	0.00	0.00	0.0	0.0	0.0	0.0	START NUDGE (2°/100ft BUR)		
2948.5	2997.7	26.95	201.14	-290.3	-112.2	-45.7	311.2	EOB TO 26.95° INC		
4928.5	5218.9	26.95	201.14	-1229.3	-475.3	-193.6	1318.0	END OF TANGENT		
6227.0	6566.6	0.00	201.14	-1519.6	-587.5	-239.4	1629.2	EOD TO VERTICAL		
6257.0	6596.6	0.00	0.00	-1519.6	-587.5	-239.4	1629.2	KOP (10°/100ft BUR)		
6830.0	7496.7	90.00	90.53	-1524.9	-14.5	320.8	2202.2	7" ICP - FAIRVIEW 4 (P2)		
6830.0	14578.7	90.00	90.54	-1591.3	7067.2	7244.1	9284.2	BHL - FAIRVIEW 4 (P2)		

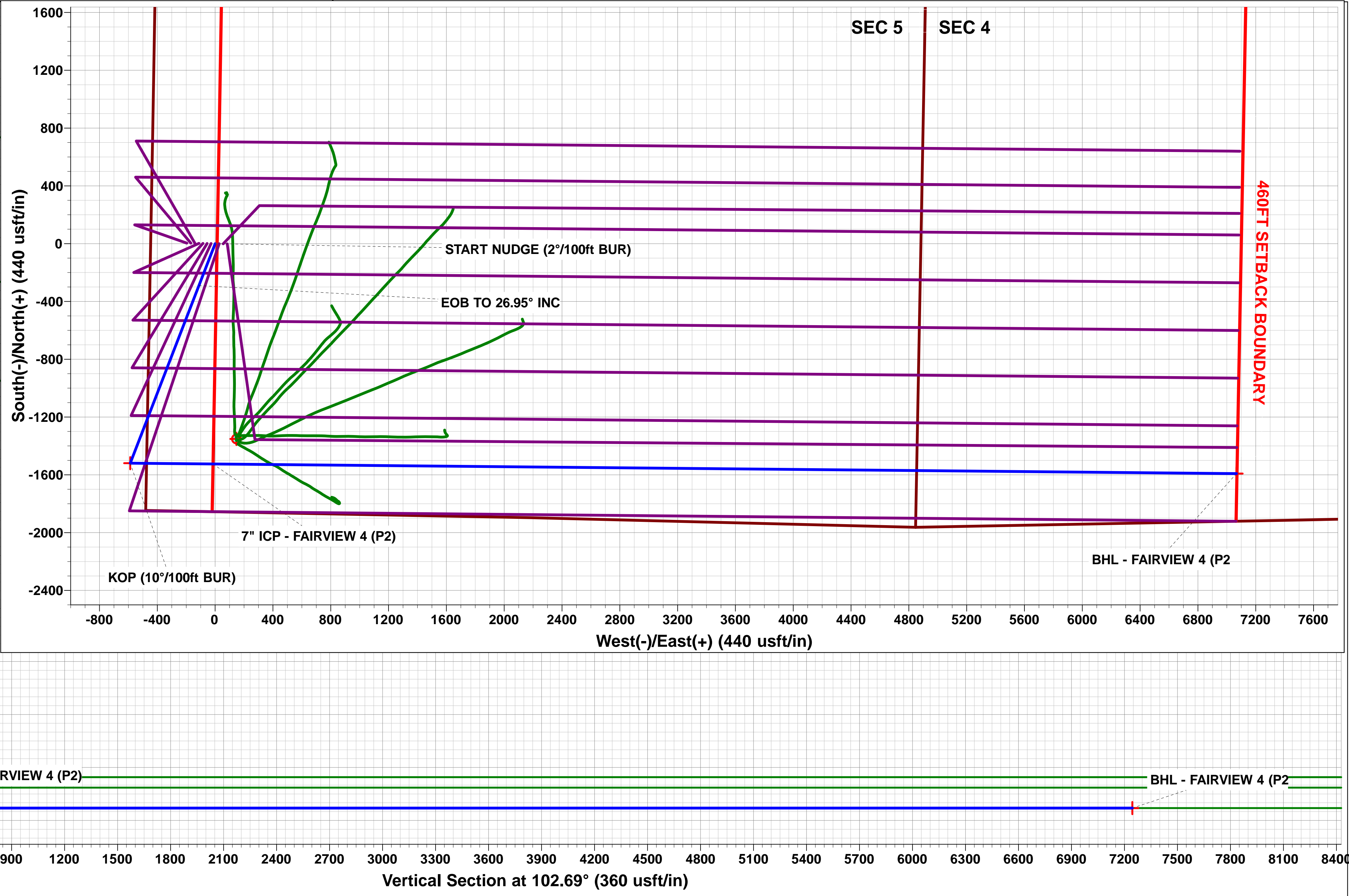
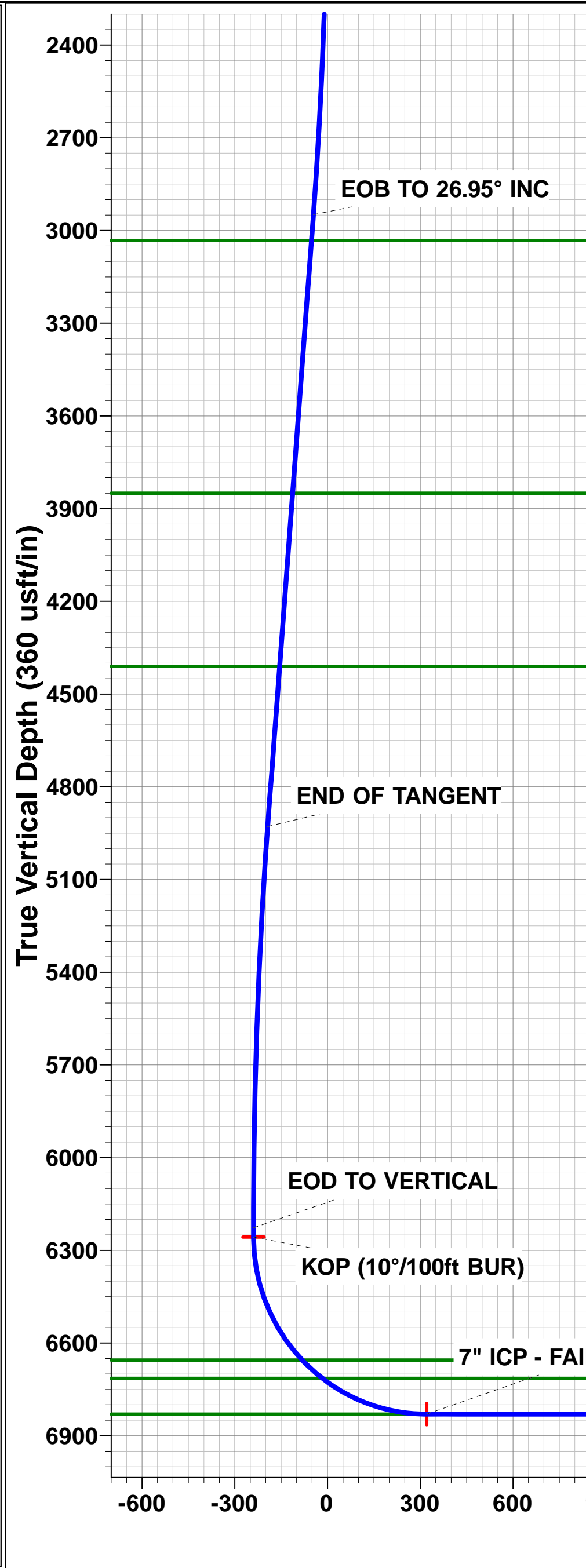
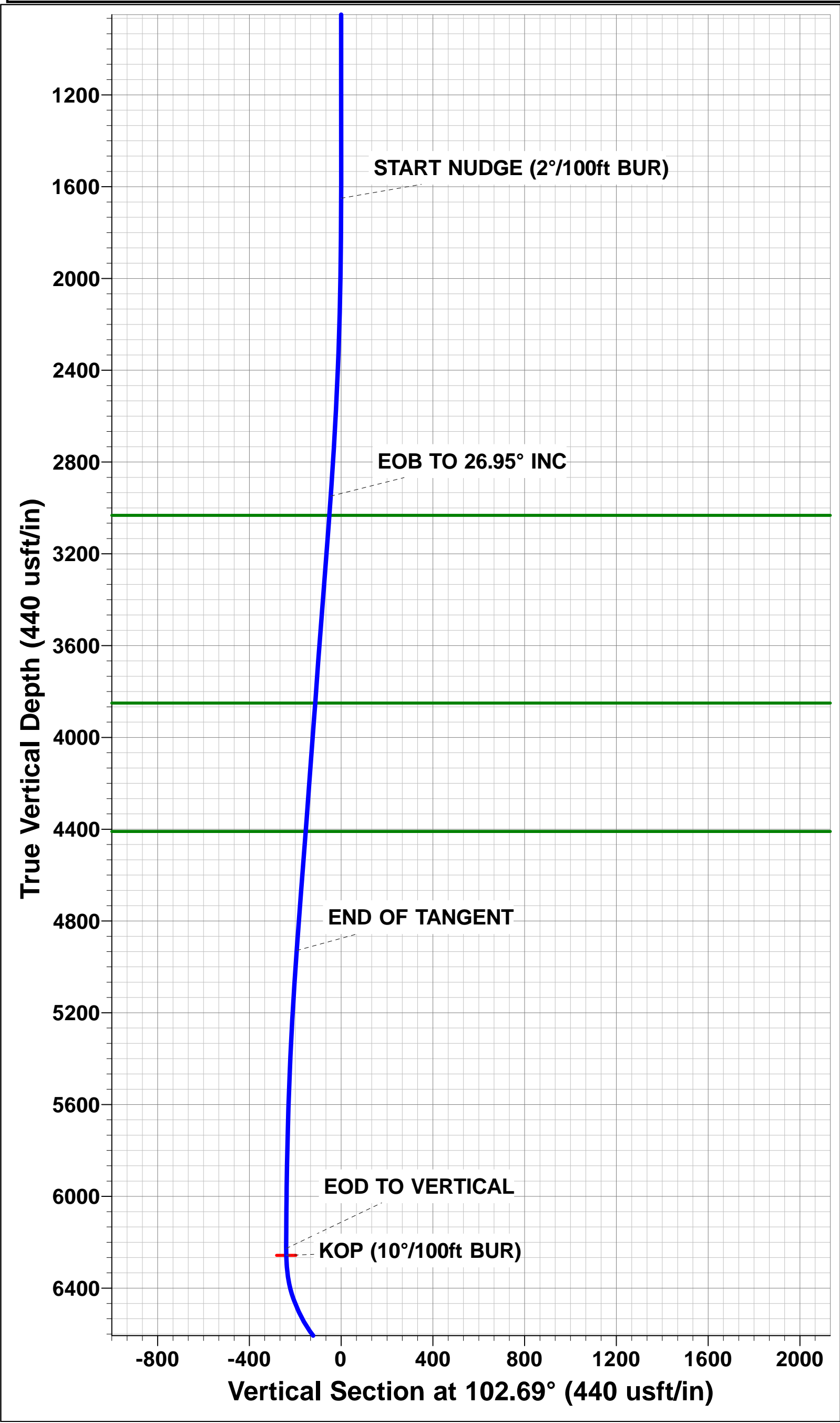
WELLBORE TARGET DETAILS (LAT/LONG)					
Name	TVD	+N/-S	+E/-W	Latitude	Longitude
KOP - FAIRVIEW 4 (P2)	6257.0	-1519.6	-587.5	40.161589	-105.037069
7" ICP - FAIRVIEW 4 (P2)	6830.0	-1524.9	-14.5	40.161574	-105.035019
BHL - FAIRVIEW 4 (P2)	6830.0	-1591.3	7067.2	40.161389	-105.009682



FORMATION TOP DETAILS		
TVDPath	MDPath	Formation
3032.0	3091.3	PARKMAN
3850.0	4009.0	SUSSEX
4410.0	4637.3	SHANNON
6655.0	7036.6	SHARON SPRINGS
6714.0	7125.6	NIOBRARA
6830.0	7496.7	NIO B TARGET

Azimuths to True North  
Magnetic North: 8.54°

Magnetic Field  
Strength: 52625.5nT  
Dip Angle: 66.70°  
Date: 22/10/2014  
Model: IGRF2010



# Planning Report



<b>Database:</b>	EDM 5000.1 Single User Db	<b>Local Co-ordinate Reference:</b>	Well FAIRVIEW 4
<b>Company:</b>	EXTRACTION OIL & GAS	<b>TVD Reference:</b>	KB-EST @ 4968.0usft (Original Well Elev)
<b>Project:</b>	WELD COUNTY, COLORADO (NAD 83)	<b>MD Reference:</b>	KB-EST @ 4968.0usft (Original Well Elev)
<b>Site:</b>	NW SW SEC. 5 T2N R68W 6th P.M.	<b>North Reference:</b>	True
<b>Well:</b>	FAIRVIEW 4	<b>Survey Calculation Method:</b>	Minimum Curvature
<b>Wellbore:</b>	ORIGINAL WELLBORE		
<b>Design:</b>	PROPOSAL #2		

<b>Project</b>	WELD COUNTY, COLORADO (NAD 83)		
<b>Map System:</b>	US State Plane 1983	<b>System Datum:</b>	Mean Sea Level
<b>Geo Datum:</b>	North American Datum 1983		
<b>Map Zone:</b>	Colorado Northern Zone		Using geodetic scale factor

<b>Site</b>	NW SW SEC. 5 T2N R68W 6th P.M.		
<b>Site Position:</b>		<b>Northing:</b>	1,303,569.20 usft
<b>From:</b>	Lat/Long	<b>Easting:</b>	3,130,047.26 usft
<b>Position Uncertainty:</b>	0.0 usft	<b>Slot Radius:</b>	1.10000 ft
		<b>Latitude:</b>	40.165756
		<b>Longitude:</b>	-105.034667
		<b>Grid Convergence:</b>	0.30 °

<b>Well</b>	FAIRVIEW 4		
<b>Well Position</b>	<b>+N/-S</b>	1.4 usft	<b>Northing:</b>
	<b>+E/-W</b>	-83.8 usft	<b>Easting:</b>
<b>Position Uncertainty</b>		0.0 usft	<b>Wellhead Elevation:</b>
			<b>Latitude:</b>
			<b>Longitude:</b>
			<b>Ground Level:</b>

<b>Wellbore</b>	ORIGINAL WELLBORE				
<b>Magnetics</b>	<b>Model Name</b>	<b>Sample Date</b>	<b>Declination (°)</b>	<b>Dip Angle (°)</b>	<b>Field Strength (nT)</b>
	IGRF2010	22/10/2014	8.54	66.70	52,626

<b>Design</b>	PROPOSAL #2			
<b>Audit Notes:</b>				
<b>Version:</b>	<b>Phase:</b>	PROTOTYPE	<b>Tie On Depth:</b>	0.0
<b>Vertical Section:</b>	<b>Depth From (TVD) (usft)</b>	<b>+N/-S (usft)</b>	<b>+E/-W (usft)</b>	<b>Direction (°)</b>
	6,830.0	0.0	0.0	102.69

<b>Plan Sections</b>											
MD (usft)	Inc (°)	Azi (°)	Vertical Depth	SS (usft)	+N/-S (usft)	+E/-W (usft)	Dogleg Rate (°/100usf)	Build Rate (°/100usf)	Turn Rate (°/100usf)	TFO (°)	Target
0.0	0.00	0.00	0.0	-4,968.0	0.0	0.0	0.00	0.00	0.00	0.00	
1,650.0	0.00	0.00	1,650.0	-3,318.0	0.0	0.0	0.00	0.00	0.00	0.00	
2,997.7	26.95	201.14	2,948.5	-2,019.5	-290.3	-112.2	2.00	2.00	0.00	201.14	
5,218.9	26.95	201.14	4,928.5	-39.5	-1,229.3	-475.3	0.00	0.00	0.00	0.00	
6,566.6	0.00	0.00	6,227.0	1,259.0	-1,519.6	-587.5	2.00	-2.00	0.00	180.00	
6,596.6	0.00	0.00	6,257.0	1,289.0	-1,519.6	-587.5	0.00	0.00	0.00	0.00	KOP - FAIRVIEW 4
7,496.7	90.00	90.53	6,830.0	1,862.0	-1,524.9	-14.5	10.00	10.00	10.06	90.53	7" ICP - FAIRVIEW
14,578.7	90.00	90.54	6,830.0	1,862.0	-1,591.3	7,067.2	0.00	0.00	0.00	94.95	BHL - FAIRVIEW 4

## Planning Report



<b>Database:</b>	EDM 5000.1 Single User Db	<b>Local Co-ordinate Reference:</b>	Well FAIRVIEW 4
<b>Company:</b>	EXTRACTION OIL & GAS	<b>TVD Reference:</b>	KB-EST @ 4968.0usft (Original Well Elev)
<b>Project:</b>	WELD COUNTY, COLORADO (NAD 83)	<b>MD Reference:</b>	KB-EST @ 4968.0usft (Original Well Elev)
<b>Site:</b>	NW SW SEC. 5 T2N R68W 6th P.M.	<b>North Reference:</b>	True
<b>Well:</b>	FAIRVIEW 4	<b>Survey Calculation Method:</b>	Minimum Curvature
<b>Wellbore:</b>	ORIGINAL WELLBORE		
<b>Design:</b>	PROPOSAL #2		

## Planned Survey

MD (usft)	Inc (°)	Azi (°)	TVD (usft)	SS (usft)	+N/-S (usft)	+E/-W (usft)	Vertical Section (usft)	Dogleg Rate (°/100usft)	Build Rate (°/100usft)	Turn Rate (°/100usft)
0.0	0.00	0.00	0.0	4,968.00	0.0	0.0	0.0	0.00	0.00	0.00
100.0	0.00	0.00	100.0	4,868.00	0.0	0.0	0.0	0.00	0.00	0.00
200.0	0.00	0.00	200.0	4,768.00	0.0	0.0	0.0	0.00	0.00	0.00
300.0	0.00	0.00	300.0	4,668.00	0.0	0.0	0.0	0.00	0.00	0.00
400.0	0.00	0.00	400.0	4,568.00	0.0	0.0	0.0	0.00	0.00	0.00
500.0	0.00	0.00	500.0	4,468.00	0.0	0.0	0.0	0.00	0.00	0.00
600.0	0.00	0.00	600.0	4,368.00	0.0	0.0	0.0	0.00	0.00	0.00
700.0	0.00	0.00	700.0	4,268.00	0.0	0.0	0.0	0.00	0.00	0.00
800.0	0.00	0.00	800.0	4,168.00	0.0	0.0	0.0	0.00	0.00	0.00
900.0	0.00	0.00	900.0	4,068.00	0.0	0.0	0.0	0.00	0.00	0.00
1,000.0	0.00	0.00	1,000.0	3,968.00	0.0	0.0	0.0	0.00	0.00	0.00
1,100.0	0.00	0.00	1,100.0	3,868.00	0.0	0.0	0.0	0.00	0.00	0.00
1,200.0	0.00	0.00	1,200.0	3,768.00	0.0	0.0	0.0	0.00	0.00	0.00
1,300.0	0.00	0.00	1,300.0	3,668.00	0.0	0.0	0.0	0.00	0.00	0.00
1,400.0	0.00	0.00	1,400.0	3,568.00	0.0	0.0	0.0	0.00	0.00	0.00
1,500.0	0.00	0.00	1,500.0	3,468.00	0.0	0.0	0.0	0.00	0.00	0.00
1,600.0	0.00	0.00	1,600.0	3,368.00	0.0	0.0	0.0	0.00	0.00	0.00
<b>START NUDGE (2°/100ft BUR)</b>										
1,650.0	0.00	0.00	1,650.0	3,318.00	0.0	0.0	0.0	0.00	0.00	0.00
1,700.0	1.00	201.14	1,700.0	3,268.00	-0.4	-0.2	-0.1	2.00	2.00	0.00
1,800.0	3.00	201.14	1,799.9	3,168.07	-3.7	-1.4	-0.6	2.00	2.00	0.00
1,900.0	5.00	201.14	1,899.7	3,068.32	-10.2	-3.9	-1.6	2.00	2.00	0.00
2,000.0	7.00	201.14	1,999.1	2,968.87	-19.9	-7.7	-3.1	2.00	2.00	0.00
2,100.0	9.00	201.14	2,098.2	2,869.85	-32.9	-12.7	-5.2	2.00	2.00	0.00
2,200.0	11.00	201.14	2,196.6	2,771.37	-49.1	-19.0	-7.7	2.00	2.00	0.00
2,300.0	13.00	201.14	2,294.4	2,673.56	-68.5	-26.5	-10.8	2.00	2.00	0.00
2,400.0	15.00	201.14	2,391.5	2,576.54	-91.0	-35.2	-14.3	2.00	2.00	0.00
2,500.0	17.00	201.14	2,487.6	2,480.42	-116.8	-45.1	-18.4	2.00	2.00	0.00
2,600.0	19.00	201.14	2,582.7	2,385.32	-145.6	-56.3	-22.9	2.00	2.00	0.00
2,700.0	21.00	201.14	2,676.6	2,291.35	-177.5	-68.6	-28.0	2.00	2.00	0.00
2,800.0	23.00	201.14	2,769.4	2,198.64	-212.4	-82.1	-33.5	2.00	2.00	0.00
2,900.0	25.00	201.14	2,860.7	2,107.29	-250.3	-96.8	-39.4	2.00	2.00	0.00
<b>EOB TO 26.95° INC</b>										
2,997.7	26.95	201.14	2,948.5	2,019.46	-290.3	-112.2	-45.7	2.00	2.00	0.00
3,000.0	26.95	201.14	2,950.6	2,017.41	-291.2	-112.6	-45.9	0.00	0.00	0.00
<b>PARKMAN</b>										
3,091.3	26.95	201.14	3,032.0	1,936.00	-329.8	-127.5	-52.0	0.00	0.00	0.00
3,100.0	26.95	201.14	3,039.7	1,928.28	-333.5	-128.9	-52.5	0.00	0.00	0.00
3,200.0	26.95	201.14	3,128.9	1,839.14	-375.8	-145.3	-59.2	0.00	0.00	0.00
3,300.0	26.95	201.14	3,218.0	1,750.00	-418.1	-161.6	-65.8	0.00	0.00	0.00
3,400.0	26.95	201.14	3,307.1	1,660.86	-460.3	-178.0	-72.5	0.00	0.00	0.00
3,500.0	26.95	201.14	3,396.3	1,571.73	-502.6	-194.3	-79.2	0.00	0.00	0.00
3,600.0	26.95	201.14	3,485.4	1,482.59	-544.9	-210.7	-85.8	0.00	0.00	0.00
3,700.0	26.95	201.14	3,574.5	1,393.45	-587.2	-227.0	-92.5	0.00	0.00	0.00
3,800.0	26.95	201.14	3,663.7	1,304.32	-629.5	-243.4	-99.1	0.00	0.00	0.00
3,900.0	26.95	201.14	3,752.8	1,215.18	-671.7	-259.7	-105.8	0.00	0.00	0.00
4,000.0	26.95	201.14	3,842.0	1,126.04	-714.0	-276.1	-112.5	0.00	0.00	0.00
<b>SUSSEX</b>										
4,009.0	26.95	201.14	3,850.0	1,118.00	-717.8	-277.5	-113.1	0.00	0.00	0.00
4,100.0	26.95	201.14	3,931.1	1,036.90	-756.3	-292.4	-119.1	0.00	0.00	0.00
4,200.0	26.95	201.14	4,020.2	947.77	-798.6	-308.7	-125.8	0.00	0.00	0.00
4,300.0	26.95	201.14	4,109.4	858.63	-840.8	-325.1	-132.4	0.00	0.00	0.00
4,400.0	26.95	201.14	4,198.5	769.49	-883.1	-341.4	-139.1	0.00	0.00	0.00
4,500.0	26.95	201.14	4,287.6	680.36	-925.4	-357.8	-145.8	0.00	0.00	0.00

<b>Database:</b>	EDM 5000.1 Single User Db	<b>Local Co-ordinate Reference:</b>	Well FAIRVIEW 4
<b>Company:</b>	EXTRACTION OIL & GAS	<b>TVD Reference:</b>	KB-EST @ 4968.0usft (Original Well Elev)
<b>Project:</b>	WELD COUNTY, COLORADO (NAD 83)	<b>MD Reference:</b>	KB-EST @ 4968.0usft (Original Well Elev)
<b>Site:</b>	NW SW SEC. 5 T2N R68W 6th P.M.	<b>North Reference:</b>	True
<b>Well:</b>	FAIRVIEW 4	<b>Survey Calculation Method:</b>	Minimum Curvature
<b>Wellbore:</b>	ORIGINAL WELLBORE		
<b>Design:</b>	PROPOSAL #2		

## Planned Survey

MD (usft)	Inc (°)	Azi (°)	TVD (usft)	SS (usft)	+N/-S (usft)	+E/-W (usft)	Vertical Section (usft)	Dogleg Rate (°/100usft)	Build Rate (°/100usft)	Turn Rate (°/100usft)
4,600.0	26.95	201.14	4,376.8	591.22	-967.7	-374.1	-152.4	0.00	0.00	0.00
<b>SHANNON</b>										
<b>4,637.3</b>	<b>26.95</b>	<b>201.14</b>	<b>4,410.0</b>	<b>558.00</b>	<b>-983.4</b>	<b>-380.2</b>	<b>-154.9</b>	<b>0.00</b>	<b>0.00</b>	<b>0.00</b>
4,700.0	26.95	201.14	4,465.9	502.08	-1,010.0	-390.5	-159.1	0.00	0.00	0.00
4,800.0	26.95	201.14	4,555.1	412.94	-1,052.2	-406.8	-165.7	0.00	0.00	0.00
4,900.0	26.95	201.14	4,644.2	323.81	-1,094.5	-423.2	-172.4	0.00	0.00	0.00
5,000.0	26.95	201.14	4,733.3	234.67	-1,136.8	-439.5	-179.1	0.00	0.00	0.00
5,100.0	26.95	201.14	4,822.5	145.53	-1,179.1	-455.9	-185.7	0.00	0.00	0.00
5,200.0	26.95	201.14	4,911.6	56.40	-1,221.3	-472.2	-192.4	0.00	0.00	0.00
<b>END OF TANGENT</b>										
<b>5,218.9</b>	<b>26.95</b>	<b>201.14</b>	<b>4,928.5</b>	<b>39.55</b>	<b>-1,229.3</b>	<b>-475.3</b>	<b>-193.6</b>	<b>0.00</b>	<b>0.00</b>	<b>0.00</b>
5,300.0	25.33	201.14	5,001.3	-33.25	-1,262.7	-488.2	-198.9	2.00	-2.00	0.00
5,400.0	23.33	201.14	5,092.4	-124.36	-1,301.1	-503.0	-204.9	2.00	-2.00	0.00
5,500.0	21.33	201.14	5,184.9	-216.86	-1,336.5	-516.7	-210.5	2.00	-2.00	0.00
5,600.0	19.33	201.14	5,278.6	-310.62	-1,368.9	-529.3	-215.6	2.00	-2.00	0.00
5,700.0	17.33	201.14	5,373.5	-405.54	-1,398.3	-540.6	-220.2	2.00	-2.00	0.00
5,800.0	15.33	201.14	5,469.5	-501.50	-1,424.5	-550.7	-224.4	2.00	-2.00	0.00
5,900.0	13.33	201.14	5,566.4	-598.39	-1,447.6	-559.7	-228.0	2.00	-2.00	0.00
6,000.0	11.33	201.14	5,664.1	-696.07	-1,467.5	-567.4	-231.1	2.00	-2.00	0.00
6,100.0	9.33	201.14	5,762.4	-794.45	-1,484.2	-573.8	-233.8	2.00	-2.00	0.00
6,200.0	7.33	201.14	5,861.4	-893.39	-1,497.7	-579.1	-235.9	2.00	-2.00	0.00
6,300.0	5.33	201.14	5,960.8	-992.77	-1,508.0	-583.0	-237.5	2.00	-2.00	0.00
6,400.0	3.33	201.14	6,060.5	-1,092.48	-1,515.1	-585.8	-238.6	2.00	-2.00	0.00
6,500.0	1.33	201.14	6,160.4	-1,192.39	-1,518.9	-587.2	-239.2	2.00	-2.00	0.00
<b>EOD TO VERTICAL</b>										
<b>6,566.6</b>	<b>0.00</b>	<b>201.14</b>	<b>6,227.0</b>	<b>-1,258.99</b>	<b>-1,519.6</b>	<b>-587.5</b>	<b>-239.4</b>	<b>2.00</b>	<b>-2.00</b>	<b>0.00</b>
<b>KOP (10°/100ft BUR)</b>										
<b>6,596.6</b>	<b>0.00</b>	<b>0.00</b>	<b>6,257.0</b>	<b>-1,288.99</b>	<b>-1,519.6</b>	<b>-587.5</b>	<b>-239.4</b>	<b>0.00</b>	<b>0.00</b>	<b>0.00</b>
6,600.0	0.34	90.53	6,260.4	-1,292.39	-1,519.6	-587.5	-239.3	9.96	9.96	0.00
6,700.0	10.34	90.53	6,359.8	-1,391.83	-1,519.7	-578.2	-230.3	10.00	10.00	0.00
6,800.0	20.34	90.53	6,456.1	-1,488.14	-1,519.9	-551.8	-204.4	10.00	10.00	0.00
6,900.0	30.34	90.53	6,546.4	-1,578.41	-1,520.3	-509.1	-162.7	10.00	10.00	0.00
7,000.0	40.34	90.53	6,627.9	-1,659.88	-1,520.9	-451.3	-106.2	10.00	10.00	0.00
<b>SHARON SPRINGS</b>										
<b>7,036.6</b>	<b>43.99</b>	<b>90.53</b>	<b>6,655.0</b>	<b>-1,687.00</b>	<b>-1,521.1</b>	<b>-426.7</b>	<b>-82.2</b>	<b>10.00</b>	<b>10.00</b>	<b>0.00</b>
7,100.0	50.33	90.53	6,698.1	-1,730.09	-1,521.5	-380.3	-36.7	10.00	10.00	0.00
<b>NIOBRARA</b>										
<b>7,125.6</b>	<b>52.90</b>	<b>90.53</b>	<b>6,714.0</b>	<b>-1,746.00</b>	<b>-1,521.7</b>	<b>-360.2</b>	<b>-17.1</b>	<b>10.00</b>	<b>10.00</b>	<b>0.00</b>
7,200.0	60.33	90.53	6,754.9	-1,786.90	-1,522.3	-298.1	43.6	10.00	10.00	0.00
7,300.0	70.33	90.53	6,796.6	-1,828.58	-1,523.1	-207.4	132.3	10.00	10.00	0.00
7,400.0	80.33	90.53	6,821.9	-1,853.86	-1,524.0	-110.8	226.7	10.00	10.00	0.00
<b>7" ICP - FAIRVIEW 4 (P2) - NIO B TARGET</b>										
<b>7,496.7</b>	<b>90.00</b>	<b>90.53</b>	<b>6,830.0</b>	<b>-1,862.00</b>	<b>-1,524.9</b>	<b>-14.5</b>	<b>320.8</b>	<b>10.00</b>	<b>10.00</b>	<b>0.00</b>
7,500.0	90.00	90.53	6,830.0	-1,862.00	-1,525.0	-11.2	324.0	0.00	0.00	0.00
7,600.0	90.00	90.53	6,830.0	-1,862.00	-1,525.9	88.8	421.8	0.00	0.00	0.00
7,700.0	90.00	90.53	6,830.0	-1,862.00	-1,526.8	188.8	519.6	0.00	0.00	0.00
7,800.0	90.00	90.53	6,830.0	-1,862.00	-1,527.8	288.8	617.3	0.00	0.00	0.00
7,900.0	90.00	90.53	6,830.0	-1,862.00	-1,528.7	388.8	715.1	0.00	0.00	0.00
8,000.0	90.00	90.53	6,830.0	-1,862.00	-1,529.6	488.8	812.8	0.00	0.00	0.00
8,100.0	90.00	90.53	6,830.0	-1,862.00	-1,530.6	588.8	910.6	0.00	0.00	0.00
8,200.0	90.00	90.53	6,830.0	-1,862.00	-1,531.5	688.8	1,008.4	0.00	0.00	0.00
8,300.0	90.00	90.53	6,830.0	-1,862.00	-1,532.4	788.7	1,106.1	0.00	0.00	0.00
8,400.0	90.00	90.53	6,830.0	-1,862.00	-1,533.4	888.7	1,203.9	0.00	0.00	0.00



# Planning Report



<b>Database:</b>	EDM 5000.1 Single User Db	<b>Local Co-ordinate Reference:</b>	Well FAIRVIEW 4
<b>Company:</b>	EXTRACTION OIL & GAS	<b>TVD Reference:</b>	KB-EST @ 4968.0usft (Original Well Elev)
<b>Project:</b>	WELD COUNTY, COLORADO (NAD 83)	<b>MD Reference:</b>	KB-EST @ 4968.0usft (Original Well Elev)
<b>Site:</b>	NW SW SEC. 5 T2N R68W 6th P.M.	<b>North Reference:</b>	True
<b>Well:</b>	FAIRVIEW 4	<b>Survey Calculation Method:</b>	Minimum Curvature
<b>Wellbore:</b>	ORIGINAL WELLBORE		
<b>Design:</b>	PROPOSAL #2		

Planned Survey										
MD (usft)	Inc (°)	Azi (°)	TVD (usft)	SS (usft)	+N/-S (usft)	+E/-W (usft)	Vertical Section (usft)	Dogleg Rate (°/100usft)	Build Rate (°/100usft)	Turn Rate (°/100usft)
8,500.0	90.00	90.53	6,830.0	-1,862.00	-1,534.3	988.7	1,301.6	0.00	0.00	0.00
8,600.0	90.00	90.53	6,830.0	-1,862.00	-1,535.2	1,088.7	1,399.4	0.00	0.00	0.00
8,700.0	90.00	90.53	6,830.0	-1,861.99	-1,536.2	1,188.7	1,497.1	0.00	0.00	0.00
8,800.0	90.00	90.53	6,830.0	-1,861.99	-1,537.1	1,288.7	1,594.9	0.00	0.00	0.00
8,900.0	90.00	90.54	6,830.0	-1,861.99	-1,538.0	1,388.7	1,692.7	0.00	0.00	0.00
9,000.0	90.00	90.54	6,830.0	-1,861.99	-1,539.0	1,488.7	1,790.4	0.00	0.00	0.00
9,100.0	90.00	90.54	6,830.0	-1,861.99	-1,539.9	1,588.7	1,888.2	0.00	0.00	0.00
9,200.0	90.00	90.54	6,830.0	-1,861.99	-1,540.8	1,688.7	1,985.9	0.00	0.00	0.00
9,300.0	90.00	90.54	6,830.0	-1,861.99	-1,541.8	1,788.7	2,083.7	0.00	0.00	0.00
9,400.0	90.00	90.54	6,830.0	-1,861.99	-1,542.7	1,888.7	2,181.5	0.00	0.00	0.00
9,500.0	90.00	90.54	6,830.0	-1,861.99	-1,543.6	1,988.7	2,279.2	0.00	0.00	0.00
9,600.0	90.00	90.54	6,830.0	-1,861.99	-1,544.6	2,088.7	2,377.0	0.00	0.00	0.00
9,700.0	90.00	90.54	6,830.0	-1,861.99	-1,545.5	2,188.7	2,474.7	0.00	0.00	0.00
9,800.0	90.00	90.54	6,830.0	-1,861.99	-1,546.4	2,288.7	2,572.5	0.00	0.00	0.00
9,900.0	90.00	90.54	6,830.0	-1,861.99	-1,547.4	2,388.7	2,670.2	0.00	0.00	0.00
10,000.0	90.00	90.54	6,830.0	-1,861.99	-1,548.3	2,488.7	2,768.0	0.00	0.00	0.00
10,100.0	90.00	90.54	6,830.0	-1,861.99	-1,549.2	2,588.7	2,865.8	0.00	0.00	0.00
10,200.0	90.00	90.54	6,830.0	-1,861.99	-1,550.2	2,688.7	2,963.5	0.00	0.00	0.00
10,300.0	90.00	90.54	6,830.0	-1,861.99	-1,551.1	2,788.7	3,061.3	0.00	0.00	0.00
10,400.0	90.00	90.54	6,830.0	-1,861.99	-1,552.0	2,888.7	3,159.0	0.00	0.00	0.00
10,500.0	90.00	90.54	6,830.0	-1,861.99	-1,553.0	2,988.7	3,256.8	0.00	0.00	0.00
10,600.0	90.00	90.54	6,830.0	-1,861.99	-1,553.9	3,088.6	3,354.6	0.00	0.00	0.00
10,700.0	90.00	90.54	6,830.0	-1,861.99	-1,554.9	3,188.6	3,452.3	0.00	0.00	0.00
10,800.0	90.00	90.54	6,830.0	-1,861.99	-1,555.8	3,288.6	3,550.1	0.00	0.00	0.00
10,900.0	90.00	90.54	6,830.0	-1,861.99	-1,556.7	3,388.6	3,647.8	0.00	0.00	0.00
11,000.0	90.00	90.54	6,830.0	-1,861.99	-1,557.7	3,488.6	3,745.6	0.00	0.00	0.00
11,100.0	90.00	90.54	6,830.0	-1,861.99	-1,558.6	3,588.6	3,843.3	0.00	0.00	0.00
11,200.0	90.00	90.54	6,830.0	-1,861.99	-1,559.5	3,688.6	3,941.1	0.00	0.00	0.00
11,300.0	90.00	90.54	6,830.0	-1,861.99	-1,560.5	3,788.6	4,038.9	0.00	0.00	0.00
11,400.0	90.00	90.54	6,830.0	-1,861.99	-1,561.4	3,888.6	4,136.6	0.00	0.00	0.00
11,500.0	90.00	90.54	6,830.0	-1,861.99	-1,562.4	3,988.6	4,234.4	0.00	0.00	0.00
11,600.0	90.00	90.54	6,830.0	-1,861.99	-1,563.3	4,088.6	4,332.1	0.00	0.00	0.00
11,700.0	90.00	90.54	6,830.0	-1,861.99	-1,564.2	4,188.6	4,429.9	0.00	0.00	0.00
11,800.0	90.00	90.54	6,830.0	-1,861.99	-1,565.2	4,288.6	4,527.7	0.00	0.00	0.00
11,900.0	90.00	90.54	6,830.0	-1,861.99	-1,566.1	4,388.6	4,625.4	0.00	0.00	0.00
12,000.0	90.00	90.54	6,830.0	-1,861.99	-1,567.1	4,488.6	4,723.2	0.00	0.00	0.00
12,100.0	90.00	90.54	6,830.0	-1,861.99	-1,568.0	4,588.6	4,820.9	0.00	0.00	0.00
12,200.0	90.00	90.54	6,830.0	-1,861.99	-1,568.9	4,688.6	4,918.7	0.00	0.00	0.00
12,300.0	90.00	90.54	6,830.0	-1,861.99	-1,569.9	4,788.6	5,016.5	0.00	0.00	0.00
12,400.0	90.00	90.54	6,830.0	-1,861.99	-1,570.8	4,888.6	5,114.2	0.00	0.00	0.00
12,500.0	90.00	90.54	6,830.0	-1,861.99	-1,571.7	4,988.6	5,212.0	0.00	0.00	0.00
12,600.0	90.00	90.54	6,830.0	-1,861.99	-1,572.7	5,088.6	5,309.7	0.00	0.00	0.00
12,700.0	90.00	90.54	6,830.0	-1,861.99	-1,573.6	5,188.6	5,407.5	0.00	0.00	0.00
12,800.0	90.00	90.54	6,830.0	-1,861.99	-1,574.6	5,288.6	5,505.3	0.00	0.00	0.00
12,900.0	90.00	90.54	6,830.0	-1,861.99	-1,575.5	5,388.5	5,603.0	0.00	0.00	0.00
13,000.0	90.00	90.54	6,830.0	-1,861.99	-1,576.5	5,488.5	5,700.8	0.00	0.00	0.00
13,100.0	90.00	90.54	6,830.0	-1,861.99	-1,577.4	5,588.5	5,798.5	0.00	0.00	0.00
13,200.0	90.00	90.54	6,830.0	-1,861.99	-1,578.3	5,688.5	5,896.3	0.00	0.00	0.00
13,300.0	90.00	90.54	6,830.0	-1,861.99	-1,579.3	5,788.5	5,994.1	0.00	0.00	0.00
13,400.0	90.00	90.54	6,830.0	-1,861.99	-1,580.2	5,888.5	6,091.8	0.00	0.00	0.00
13,500.0	90.00	90.54	6,830.0	-1,862.00	-1,581.2	5,988.5	6,189.6	0.00	0.00	0.00
13,600.0	90.00	90.54	6,830.0	-1,862.00	-1,582.1	6,088.5	6,287.3	0.00	0.00	0.00
13,700.0	90.00	90.54	6,830.0	-1,862.00	-1,583.0	6,188.5	6,385.1	0.00	0.00	0.00
13,800.0	90.00	90.54	6,830.0	-1,862.00	-1,584.0	6,288.5	6,482.9	0.00	0.00	0.00

<b>Database:</b>	EDM 5000.1 Single User Db	<b>Local Co-ordinate Reference:</b>	Well FAIRVIEW 4
<b>Company:</b>	EXTRACTION OIL & GAS	<b>TVD Reference:</b>	KB-EST @ 4968.0usft (Original Well Elev)
<b>Project:</b>	WELD COUNTY, COLORADO (NAD 83)	<b>MD Reference:</b>	KB-EST @ 4968.0usft (Original Well Elev)
<b>Site:</b>	NW SW SEC. 5 T2N R68W 6th P.M.	<b>North Reference:</b>	True
<b>Well:</b>	FAIRVIEW 4	<b>Survey Calculation Method:</b>	Minimum Curvature
<b>Wellbore:</b>	ORIGINAL WELLBORE		
<b>Design:</b>	PROPOSAL #2		

Planned Survey										
MD (usft)	Inc (°)	Azi (°)	TVD (usft)	SS (usft)	+N/-S (usft)	+E/-W (usft)	Vertical Section (usft)	Dogleg Rate (°/100usft)	Build Rate (°/100usft)	Turn Rate (°/100usft)
13,900.0	90.00	90.54	6,830.0	-1,862.00	-1,584.9	6,388.5	6,580.6	0.00	0.00	0.00
14,000.0	90.00	90.54	6,830.0	-1,862.00	-1,585.9	6,488.5	6,678.4	0.00	0.00	0.00
14,100.0	90.00	90.54	6,830.0	-1,862.00	-1,586.8	6,588.5	6,776.1	0.00	0.00	0.00
14,200.0	90.00	90.54	6,830.0	-1,862.00	-1,587.8	6,688.5	6,873.9	0.00	0.00	0.00
14,300.0	90.00	90.54	6,830.0	-1,862.00	-1,588.7	6,788.5	6,971.7	0.00	0.00	0.00
14,400.0	90.00	90.54	6,830.0	-1,862.00	-1,589.6	6,888.5	7,069.4	0.00	0.00	0.00
14,500.0	90.00	90.54	6,830.0	-1,862.00	-1,590.6	6,988.5	7,167.2	0.00	0.00	0.00
<b>BHL - FAIRVIEW 4 (P2)</b>										
<b>14,578.7</b>	<b>90.00</b>	<b>90.54</b>	<b>6,830.0</b>	<b>-1,862.00</b>	<b>-1,591.3</b>	<b>7,067.2</b>	<b>7,244.1</b>	<b>0.00</b>	<b>0.00</b>	<b>0.00</b>

Formations						
MD (usft)	TVD (usft)	Name	Lithology	Dip (°)	Dip Direction (°)	
3,091.3	3,032.0	PARKMAN		0.00		
4,009.0	3,850.0	SUSSEX		0.00		
4,637.3	4,410.0	SHANNON		0.00		
7,036.6	6,655.0	SHARON SPRINGS		0.00		
7,125.6	6,714.0	NIOBRARA		0.00		
7,496.7	6,830.0	NIO B TARGET		0.00		

Plan Annotations				
MD (usft)	TVD (usft)	Local Coordinates		Comment
		+N/-S (usft)	+E/-W (usft)	
1,650.0	1,650.0	0.0	0.0	START NUDGE (2°/100ft BUR)
2,997.7	2,948.5	-290.3	-112.2	EOB TO 26.95° INC
5,218.9	4,928.5	-1,229.3	-475.3	END OF TANGENT
6,566.6	6,227.0	-1,519.6	-587.5	EOD TO VERTICAL
6,596.6	6,257.0	-1,519.6	-587.5	KOP (10°/100ft BUR)
7,496.7	6,830.0	-1,524.9	-14.5	7" ICP - FAIRVIEW 4 (P2)
14,578.7	6,830.0	-1,591.3	7,067.2	BHL - FAIRVIEW 4 (P2)