



0 500 1000 2000

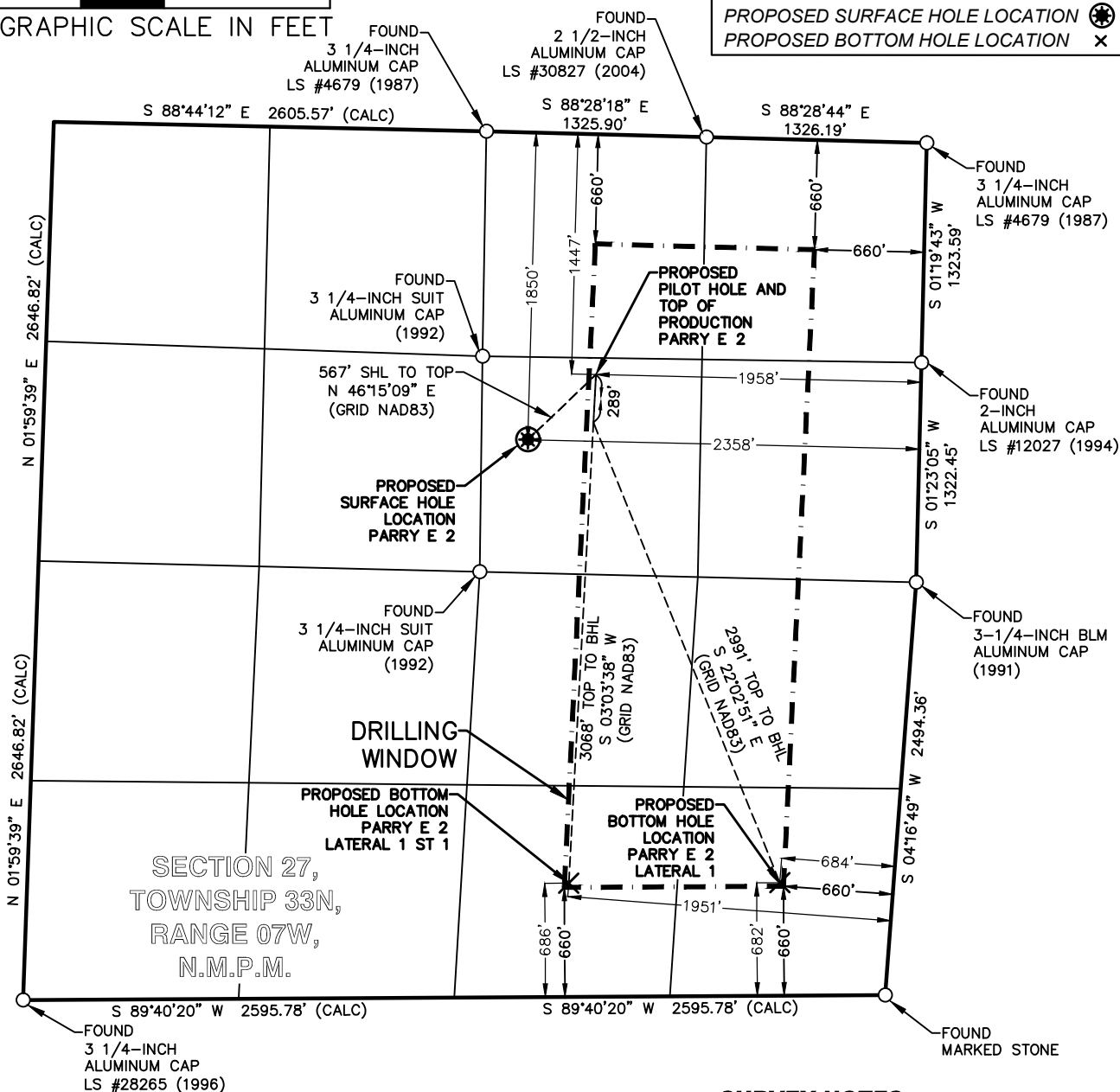
GRAPHIC SCALE IN FEET

## LEGEND

FOUND MONUMENT ○

PROPOSED SURFACE HOLE LOCATION \*

PROPOSED BOTTOM HOLE LOCATION x



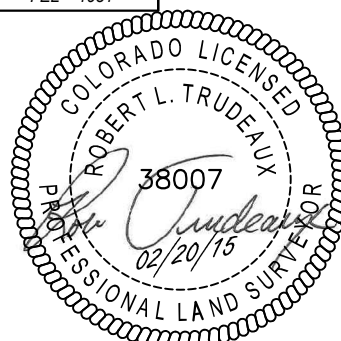
PARRY E 2	CSZ NAD'83	NAD'83	TIES	ELEVATION
PROPOSED SURFACE HOLE LOCATION (SHL)	N (Y) = 1,156,346.41' E (X) = 2,388,759.04'	LAT. = 37.07721670°N LON. = 107.59528751°W	FNL = 1850' FEL = 2358'	EXISTING GROUND 6635.19'
PROPOSED PILOT/TOP OF PRODUCTION (TOP)	N (Y) = 1,156,738.65' E (X) = 2,389,168.82'	LAT. = 37.07831890°N LON. = 107.59391342°W	FNL = 1447' FEL = 1958'	PROPOSED GRADE 6637.92'
PROPOSED BOTTOM HOLE LOCATION (BHL) LAT 1	N (Y) = 1,153,678.01' E (X) = 2,390,276.18'	LAT. = 37.06998343°N LON. = 107.58988399°W	FSL = 682' FEL = 684'	
PROPOSED BOTTOM HOLE LOCATION (BHL) LAT 1 ST 1	N (Y) = 1,153,675.41' E (X) = 2,389,005.04'	LAT. = 37.06989811°N LON. = 107.59423928°W	FSL = 686' FEL = 1951'	

## SURVEY NOTES

1. BEARING BASIS FOR THIS SURVEY IS BASED ON THE NORTH AMERICAN DATUM OF 1983, COLORADO STATE PLANE COORDINATE SYSTEM, SOUTH COLORADO, ZONE 0503.
2. ELEVATION BASIS FOR THIS SURVEY IS BASED ON THE NORTH AMERICAN VERTICAL DATUM OF 1988 (GEOID12A).
3. SURVEYED IN THE FIELD ON 01/09/2015.
4. BEARINGS AND DISTANCE SHOWN ARE MEASURED IN THE FIELD UNLESS OTHERWISE NOTED.
5. ALL MEASURED DISTANCES SHOWN ARE GRID USING A COMBINED SCALE FACTOR 0.9997229596.
6. GPS INSTRUMENT OPERATOR: BRIAN BONIFACE
7. GPS PDOP VALUE: 1.6

## SURVEYOR'S CERTIFICATE

I, ROBERT TRUDEAUX, A PROFESSIONAL LAND SURVEYOR IN THE STATE OF COLORADO, DO HEREBY CERTIFY THAT THIS PLAT WAS PREPARED FROM SURVEY DATA AND RECORD INFORMATION PROVIDED BY BP AMERICA PRODUCTION COMPANY, AND FROM A WELL LOCATION PLAT PREPARED BY STAN VERMILYEA, PLS 25381, ON JUNE 6, 2011 AND IS TRUE AND CORRECT TO THE BEST OF MY KNOWLEDGE AND BELIEF BASED ON THE STANDARDS OF CARE OF PROFESSIONAL LAND SURVEYORS PRACTICING IN THE STATE OF COLORADO. THIS DOES NOT REPRESENT A LAND SURVEY PLAT, IMPROVEMENT SURVEY PLAT, OR MONUMENTED LAND SURVEY AS DEFINED BY COLORADO REVISED STATUTES 38-51-102 AND CANNOT BE RELIED UPON TO DETERMINE OWNERSHIP. THIS SURVEY IS NOT A GUARANTY OR WARRANTY, EITHER EXPRESSED OR IMPLIED.

BP AMERICA  
PRODUCTION COMPANY  
US LOWER 48 ONSHORE

WELL LOCATION PLAT

PARRY E 2

PART OF  
SECTION 27, TOWNSHIP 33N, RANGE 07W,  
N.M.P.M.  
LA PLATA COUNTY, COLORADODRAWN BY  
RLMCHECKED BY  
RLTSCALE  
1"=1000'DATE  
02/20/2015SHEET  
1 OF 1

REVISION