

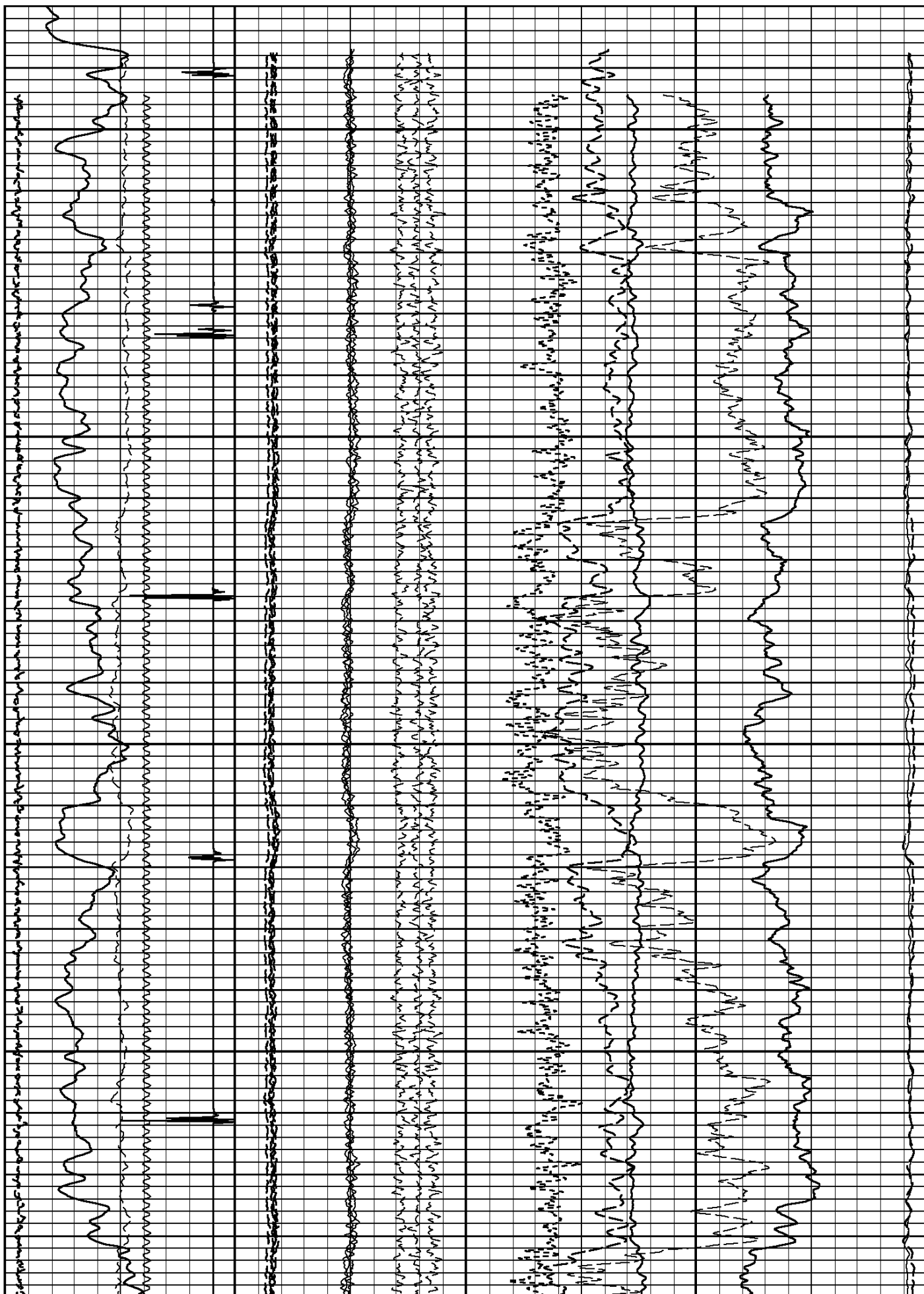


| | | EQUIPMENT DATA | | | |
|------------------|-----------|----------------|-----------|----------|-------|
| Bit Size | 7.875 | Run No. | Tool Type | Tool No. | Other |
| Well Status | NEW DRILL | ONE | CCPC | 122 | |
| Surface Pressure | | ONE | PNEE | 012 | |
| Shut In | Flowing | ONE | PDTE | 116 | |
| | | ONE | GENERATOR | KD103 | |
| | | | | | |
| | | | | | |
| | | | | | |
| | | | | | |
| | | | | | |

[illegible]

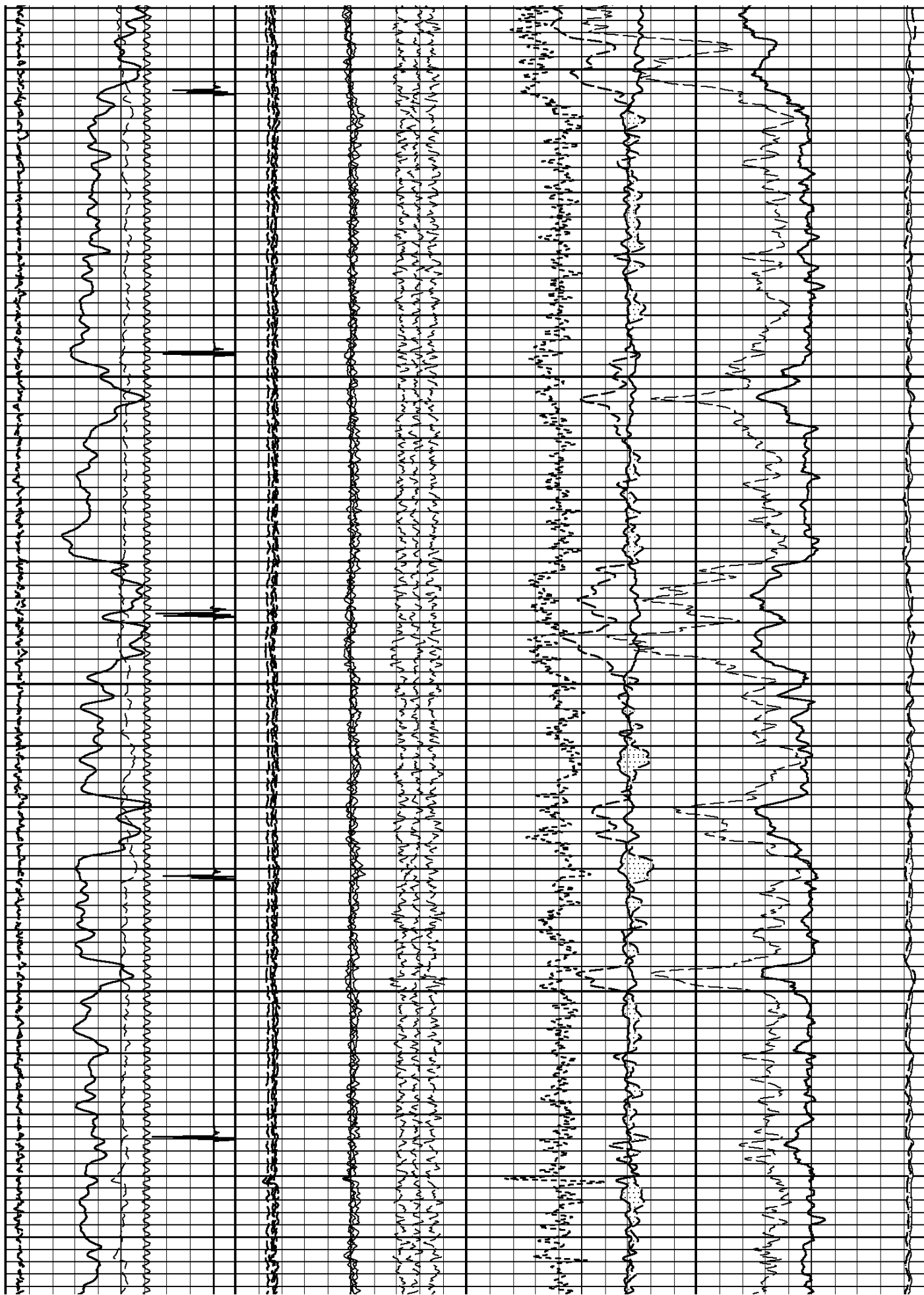
3600

3700



3800

3900



4000

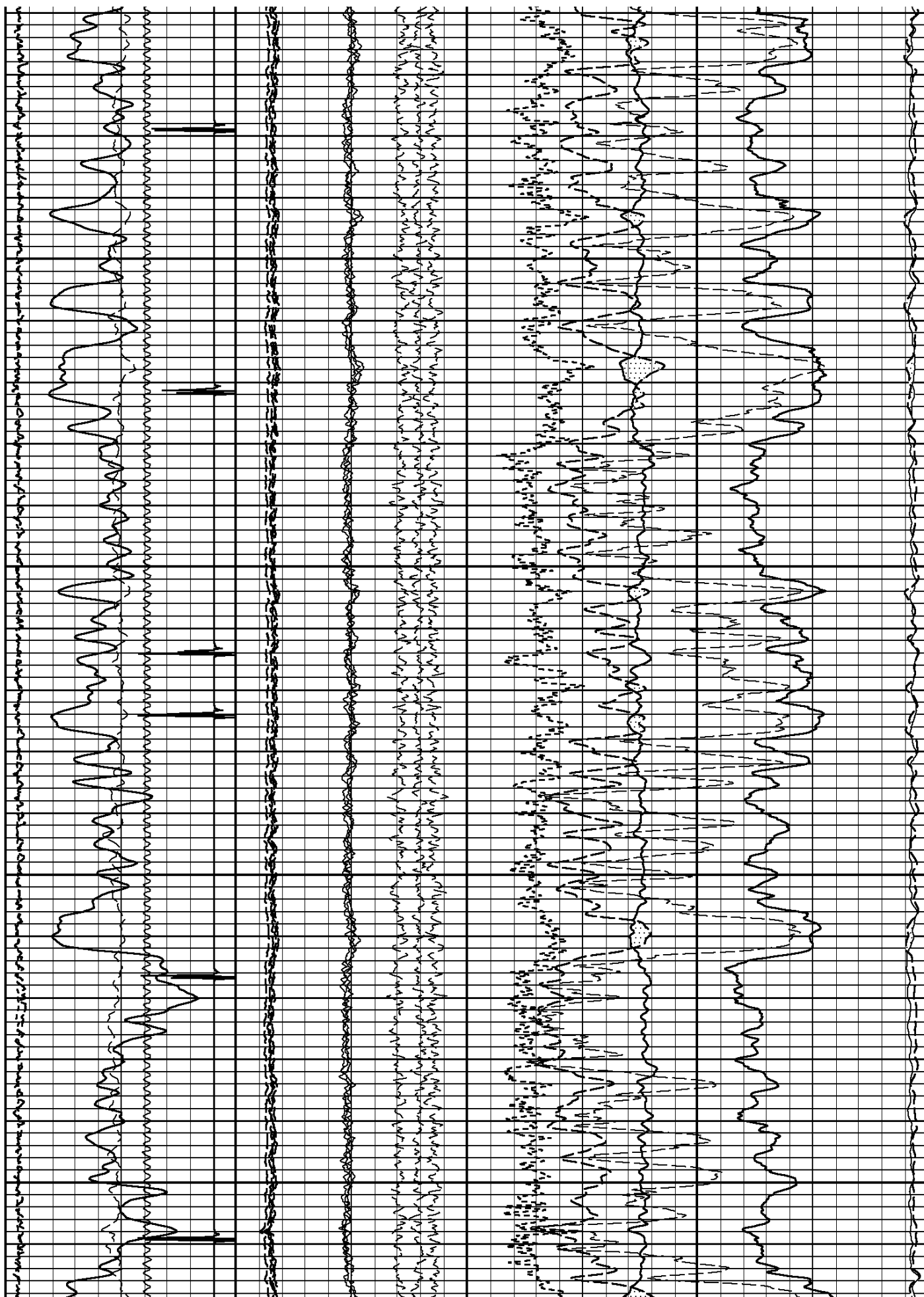
4100

4200



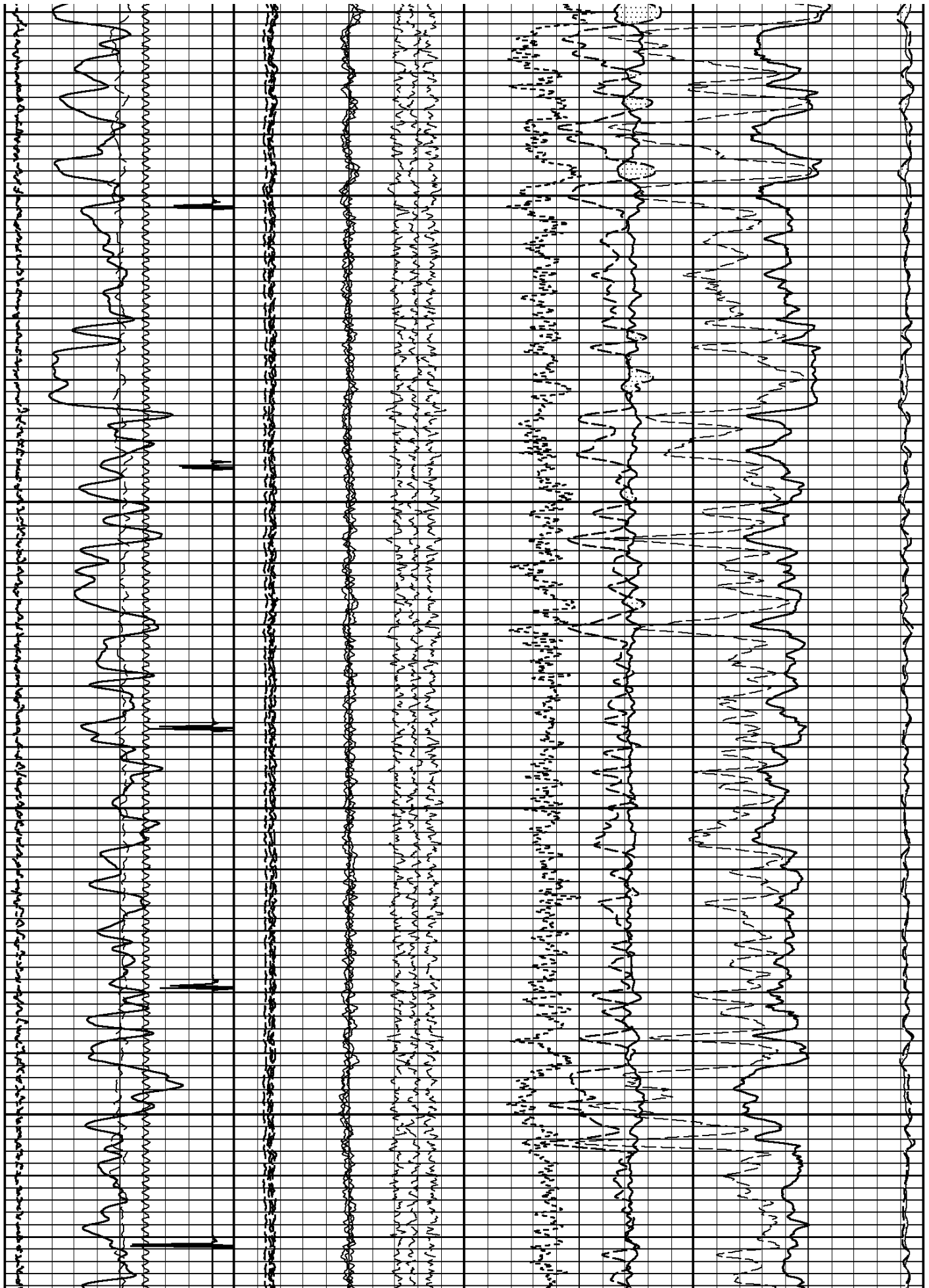
4300

4400



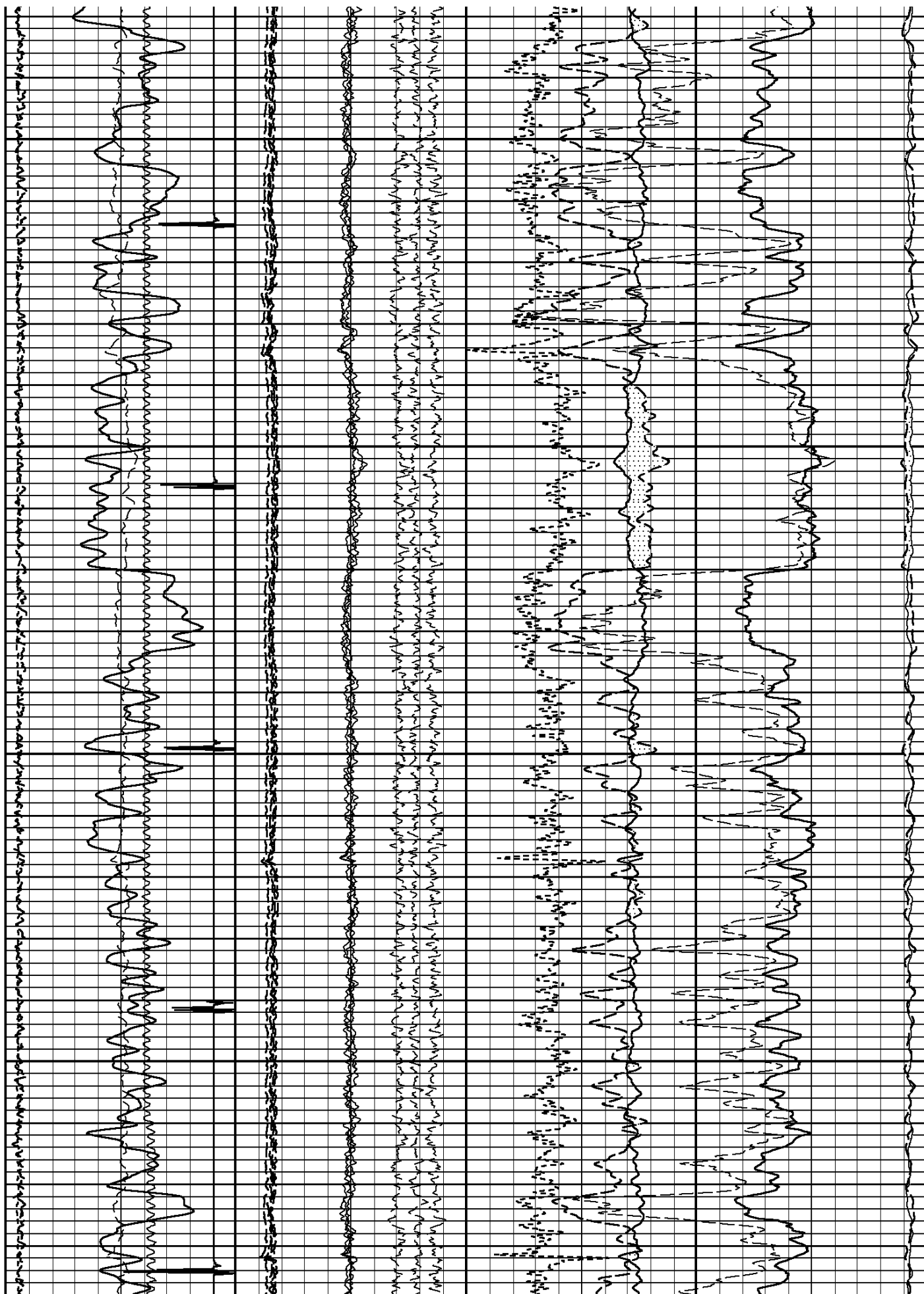
4500

4600



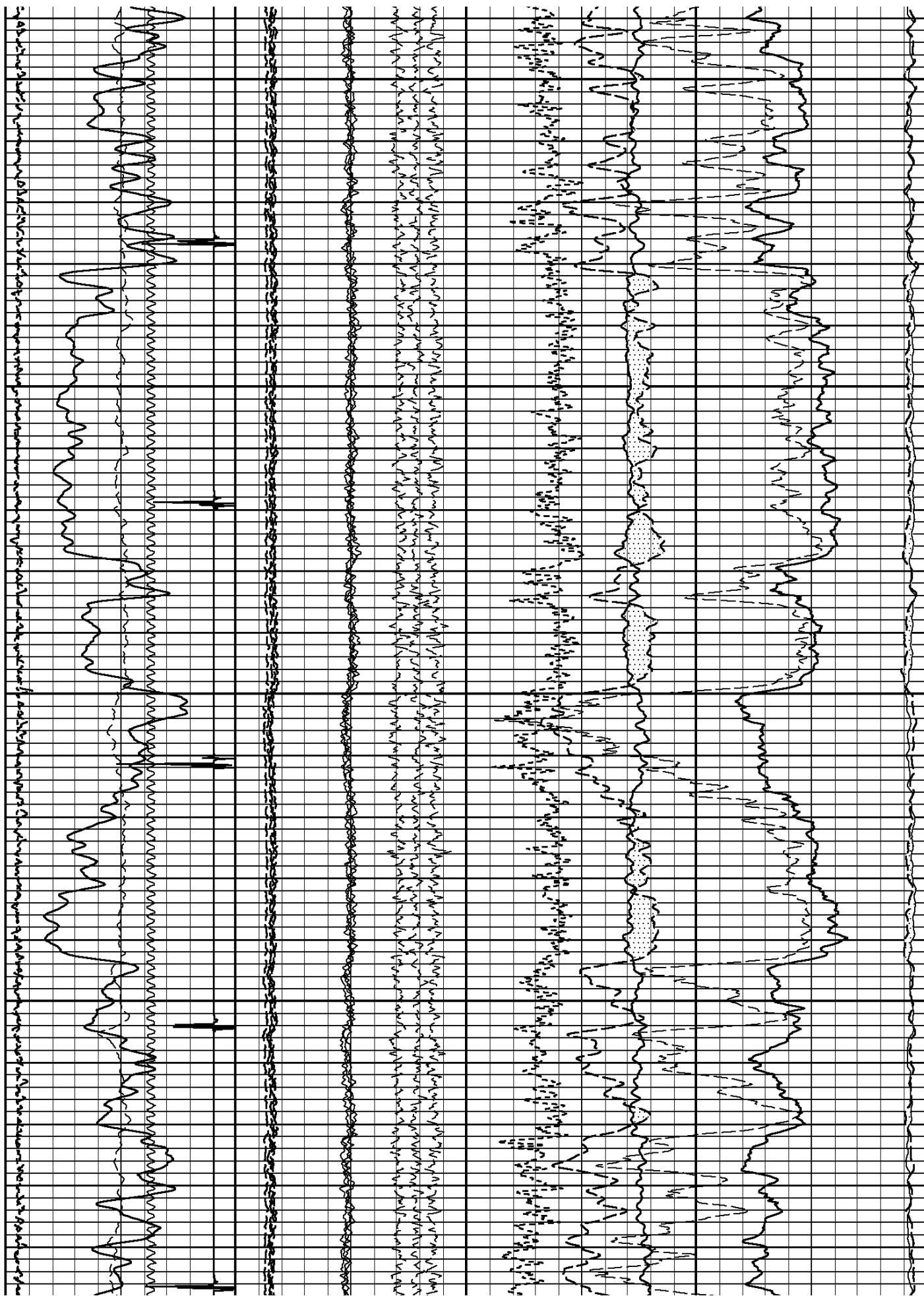
4700

4800



4900

5000



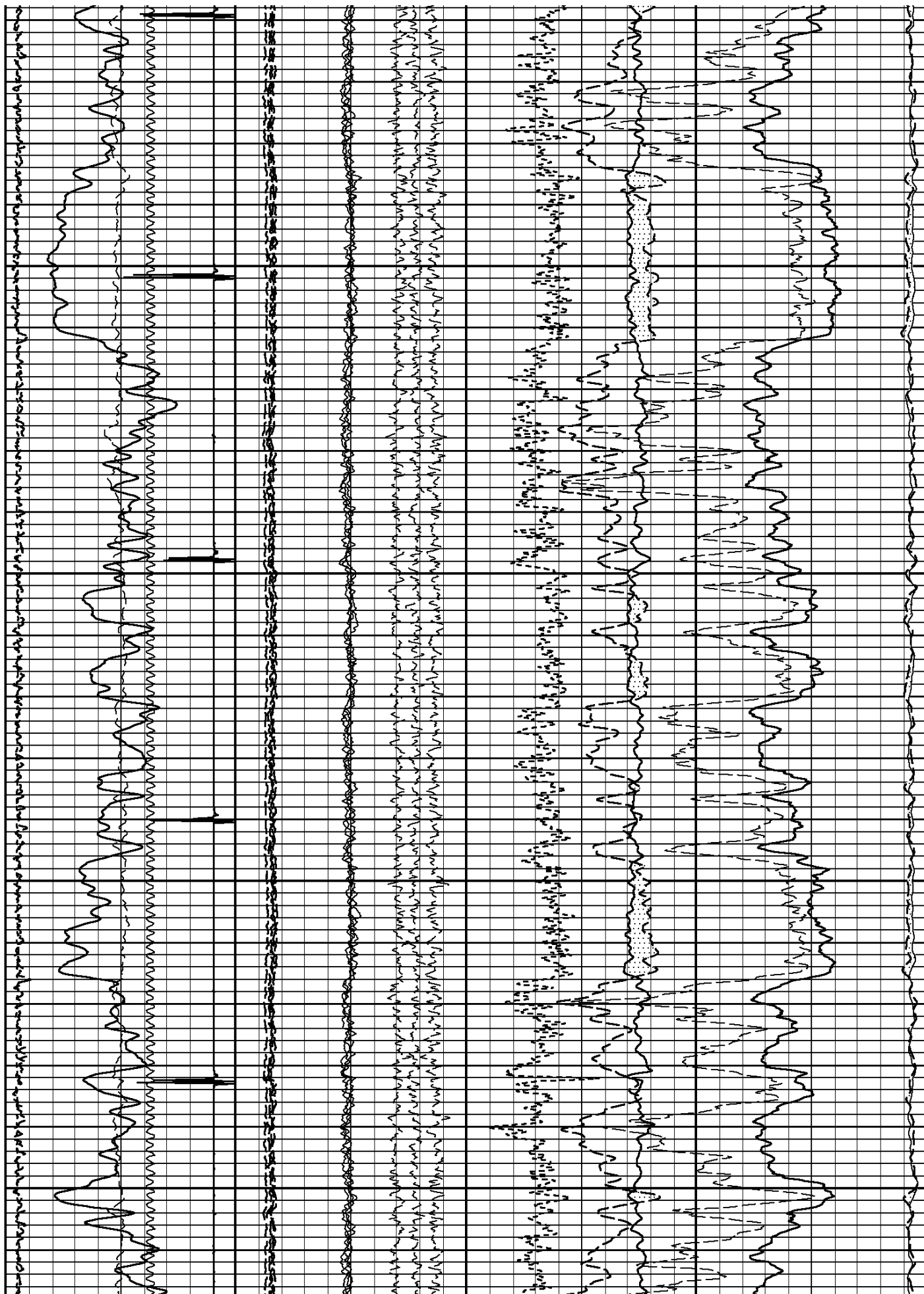
5100

5200



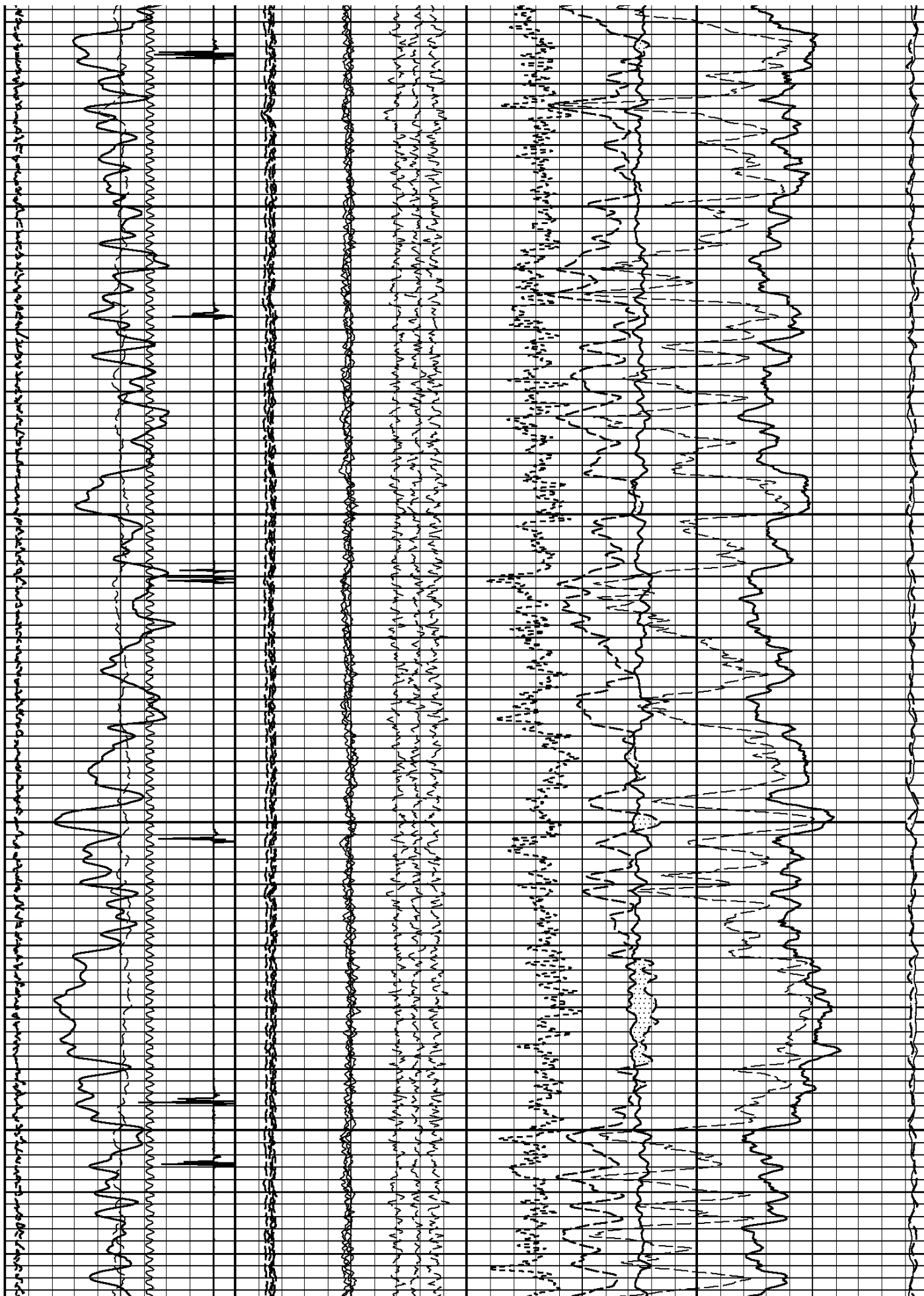
5300

5400



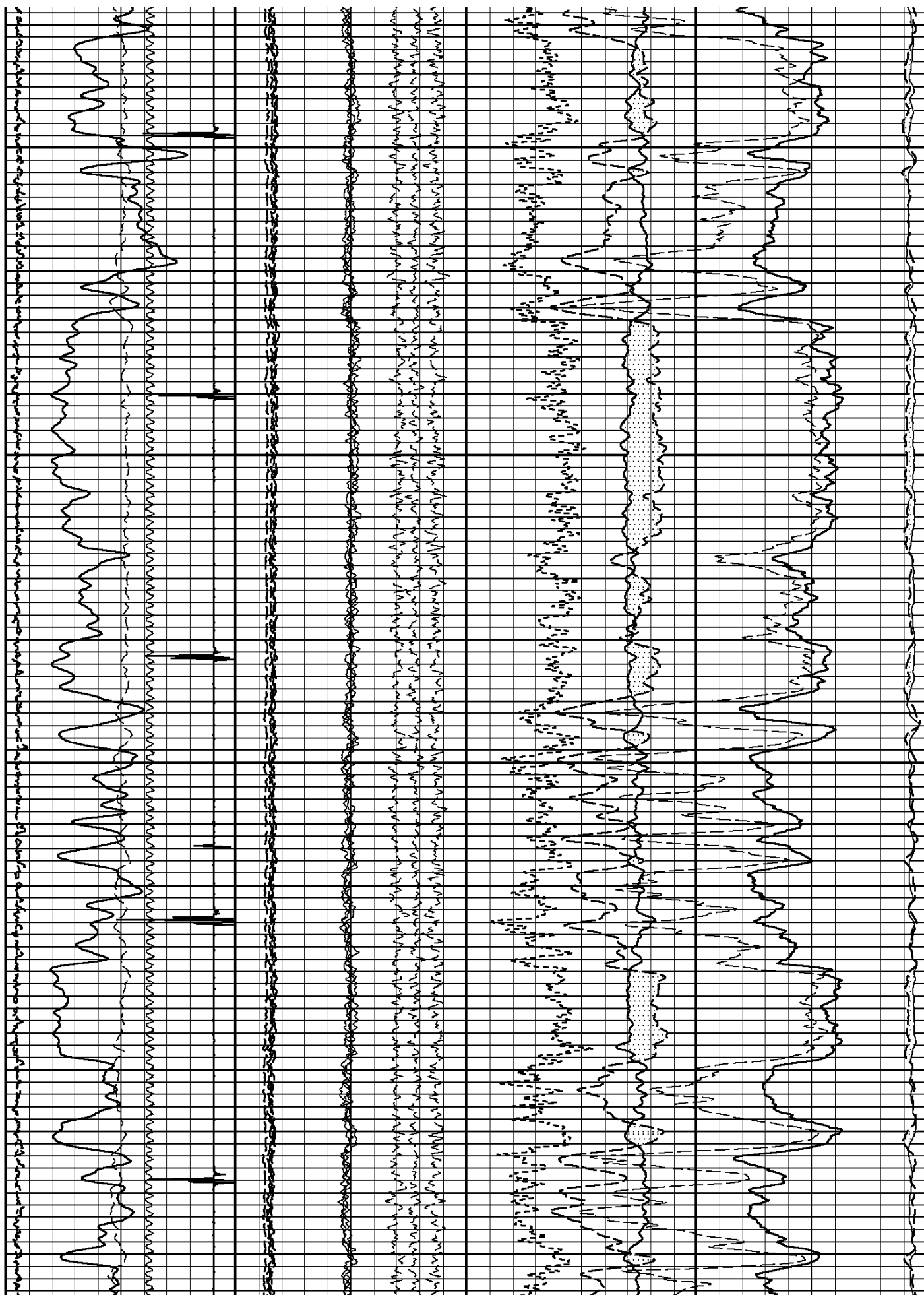
5500

5600



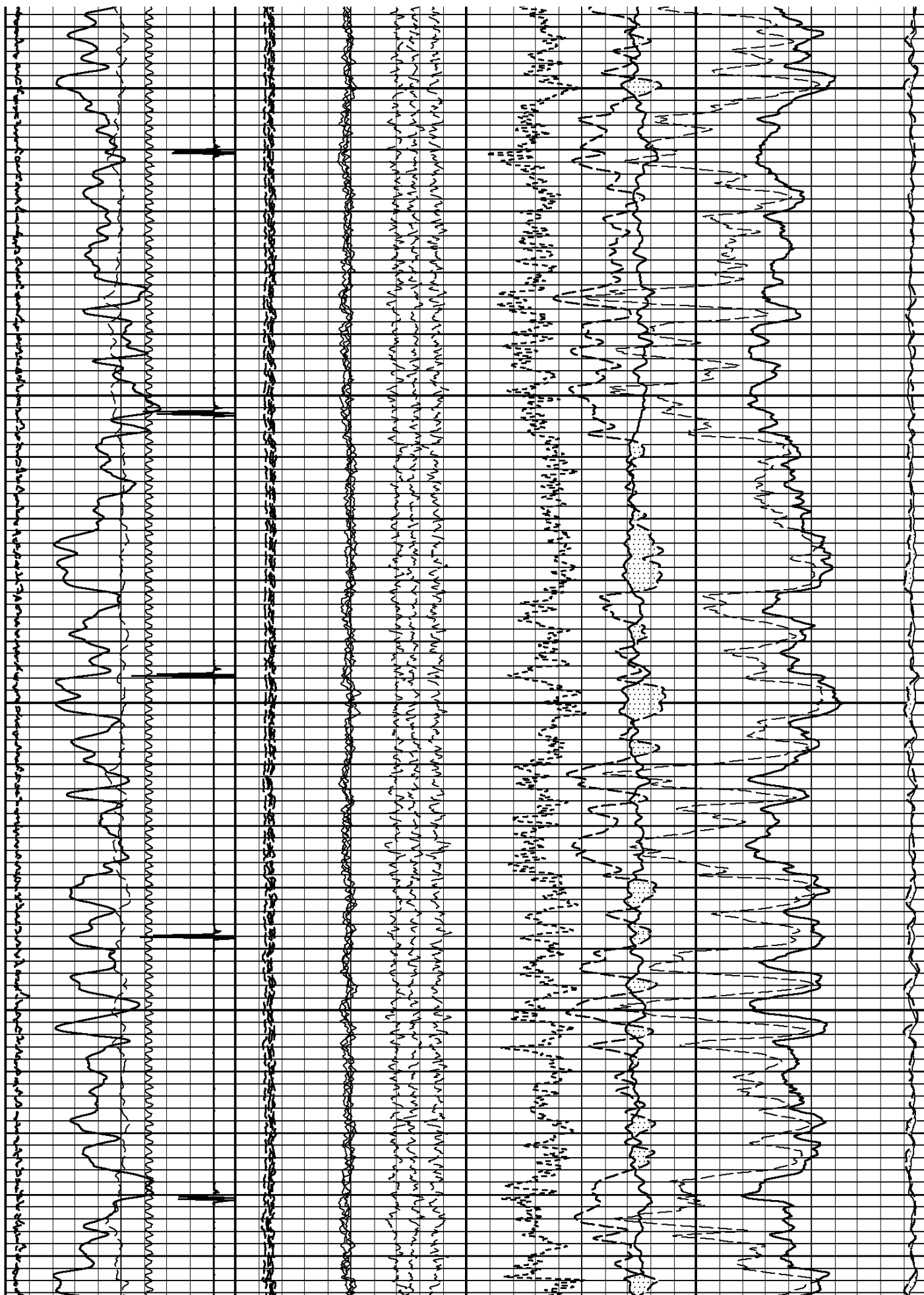
5700

5800



5900

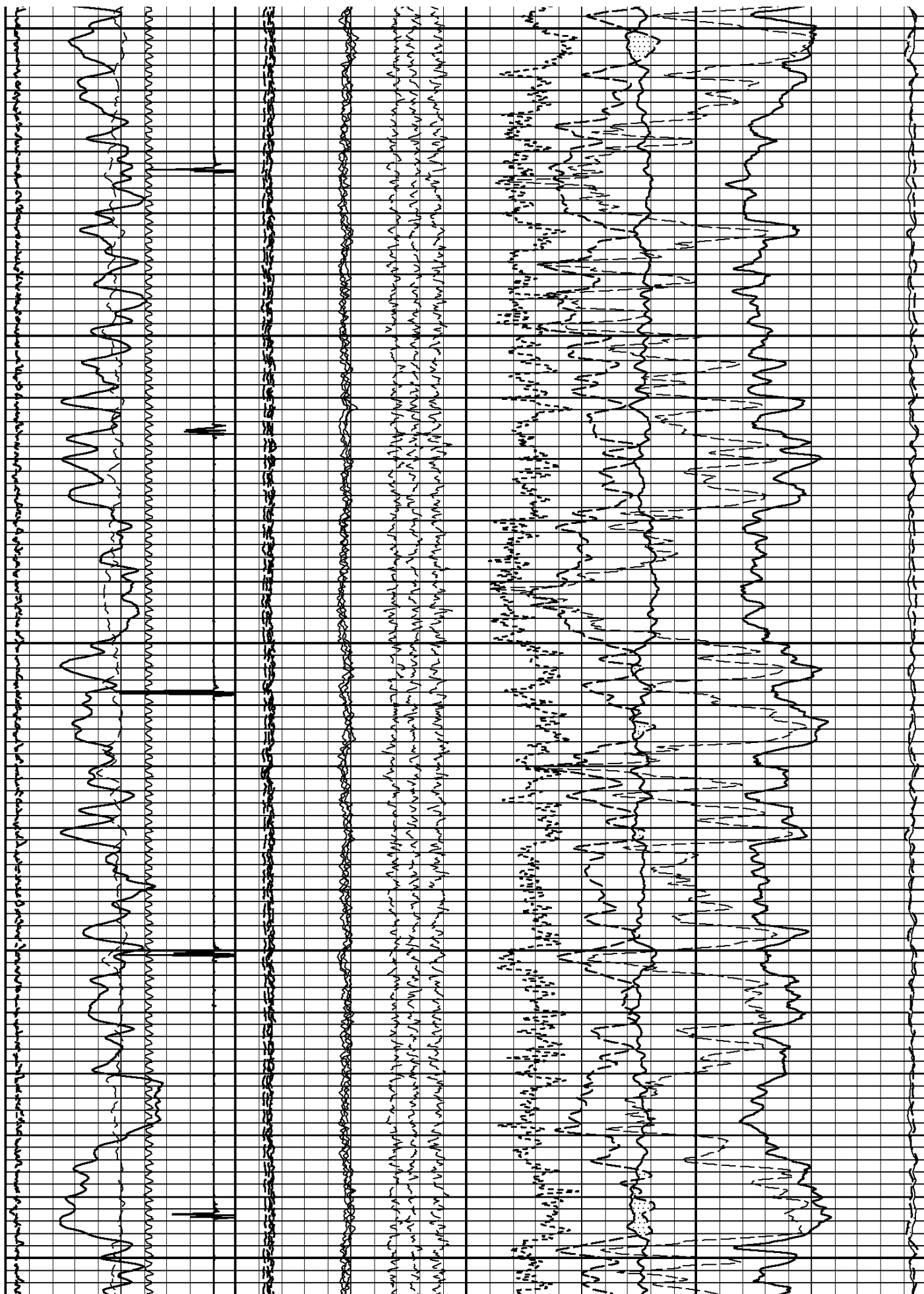
6000

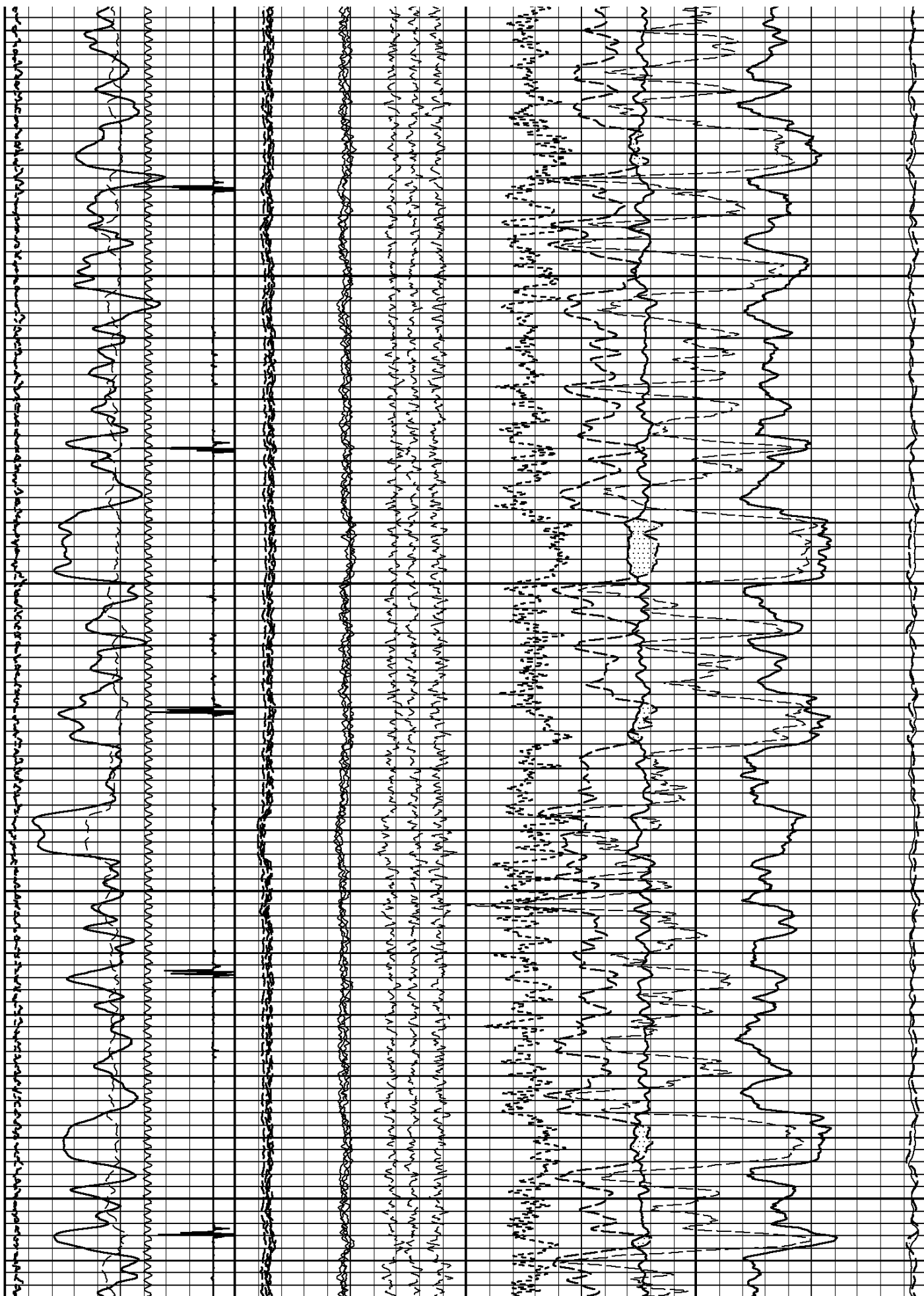


6100

6200

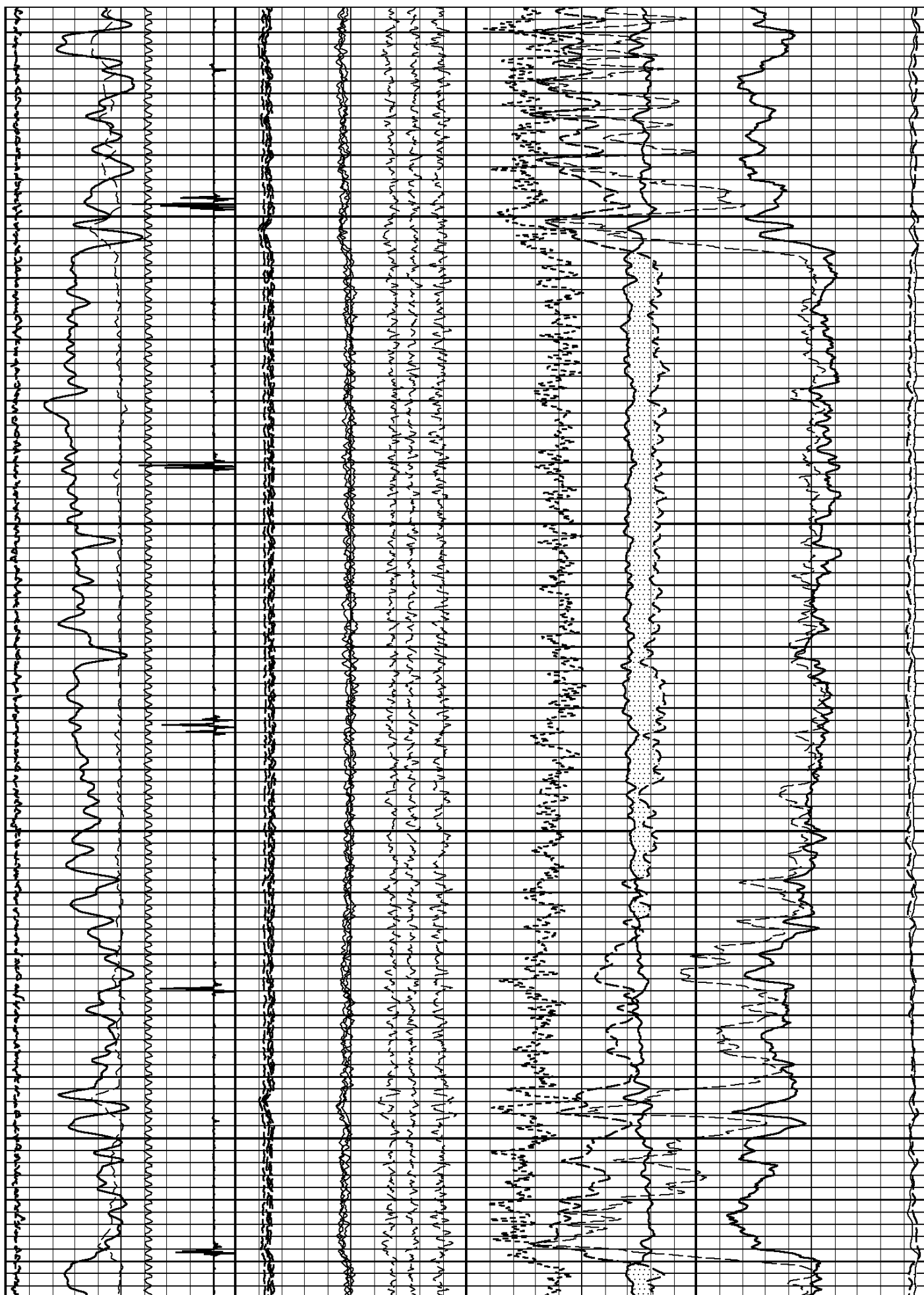
6300





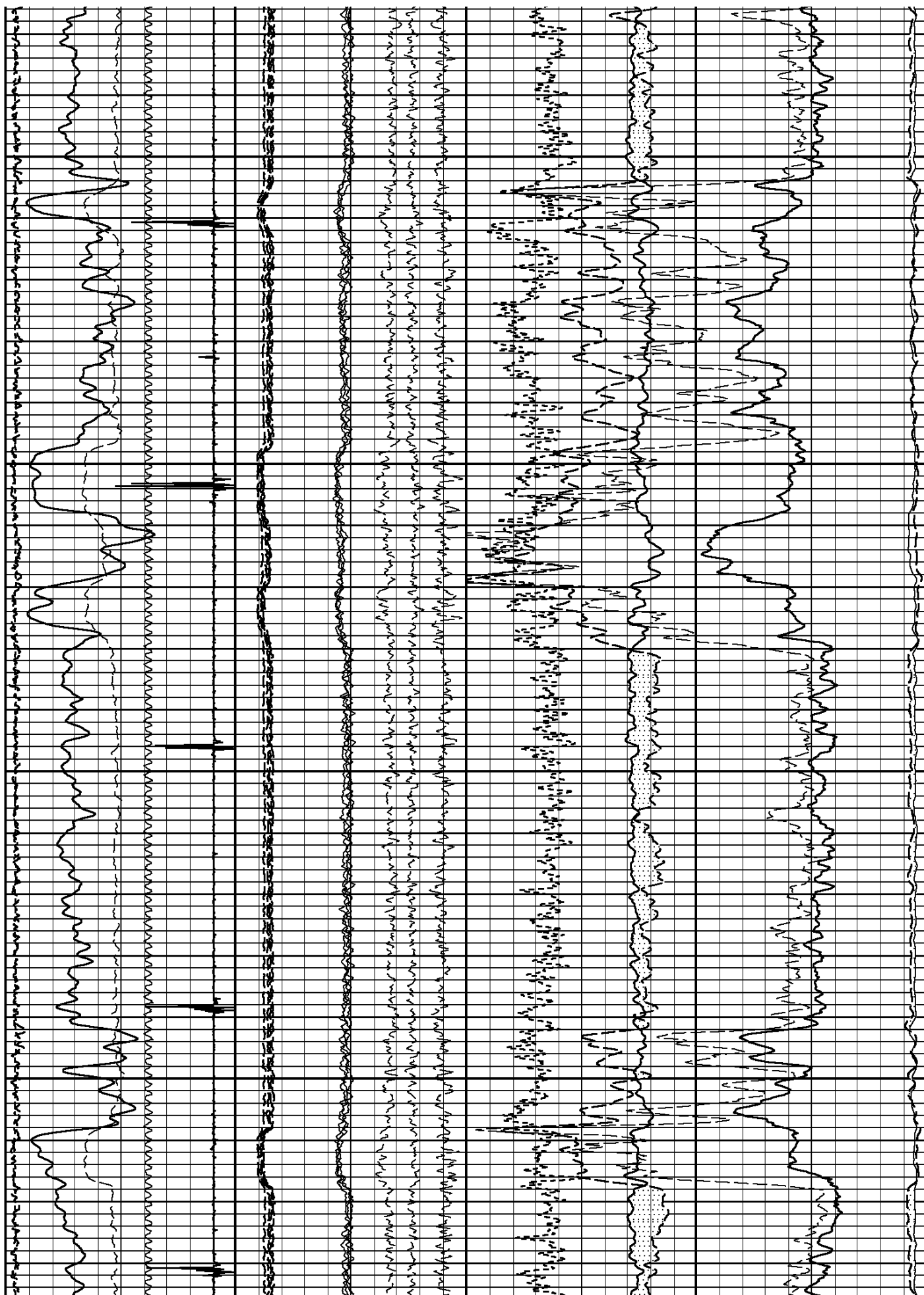
6600

6700



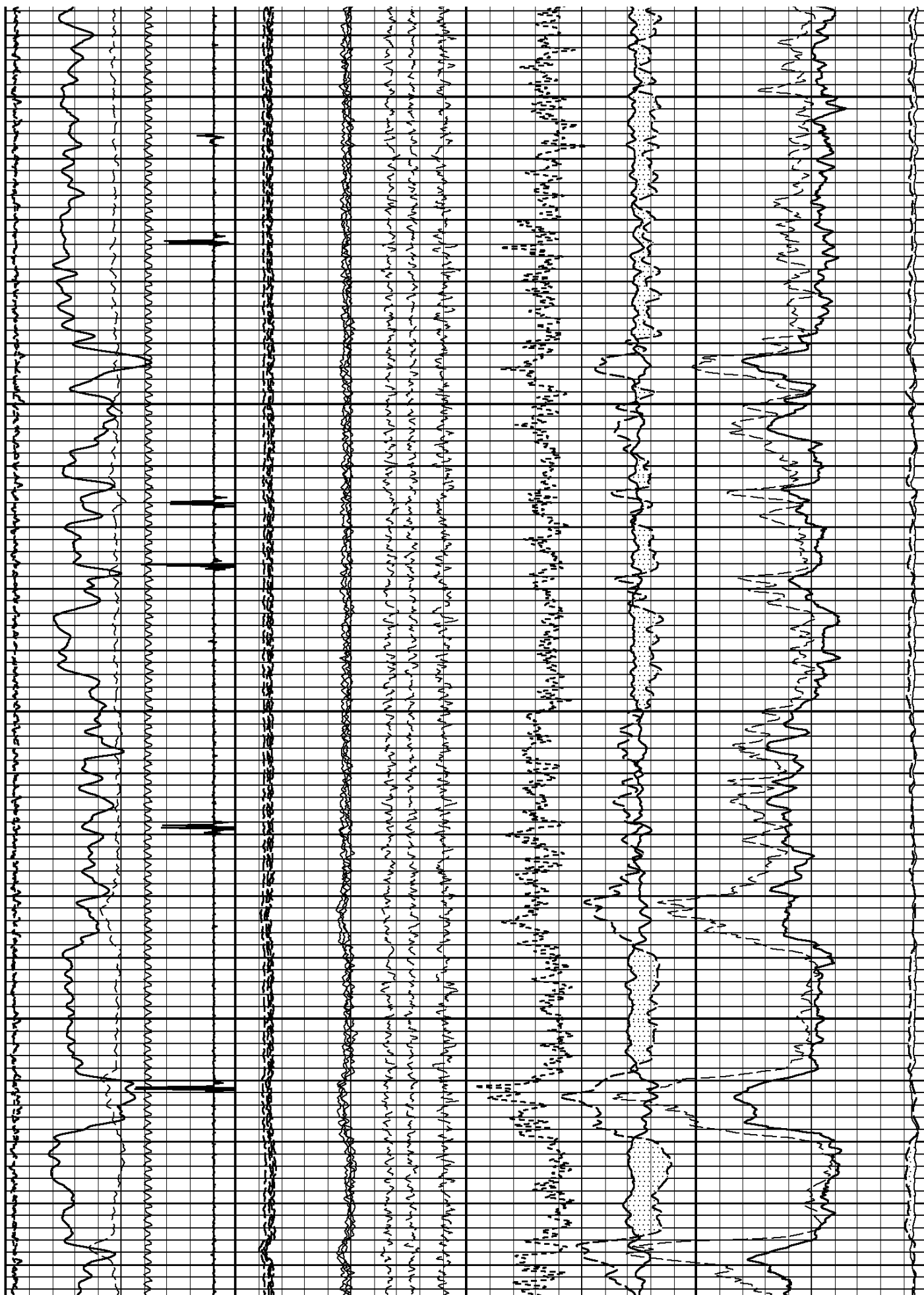
6800

6900



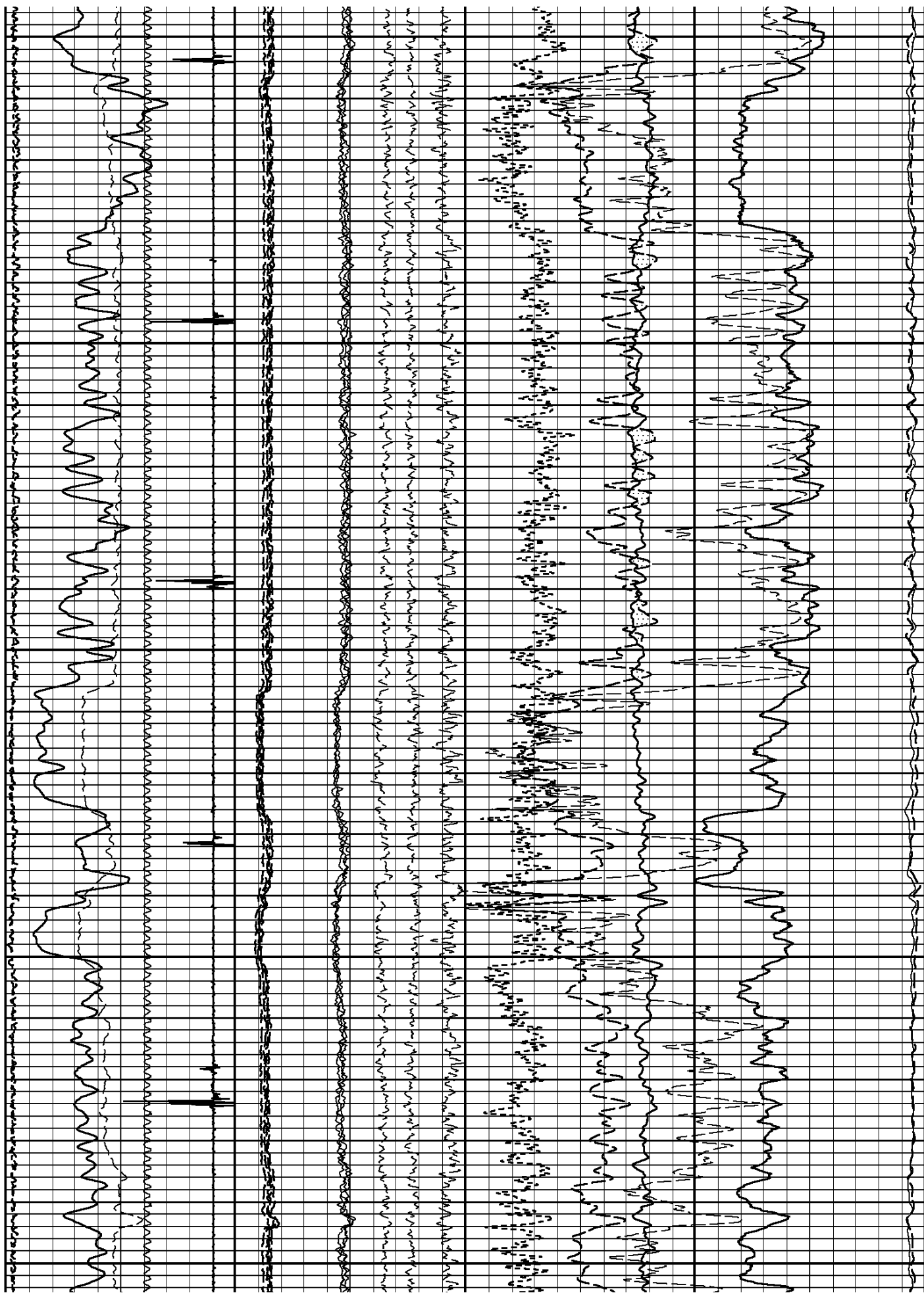
7000

7100

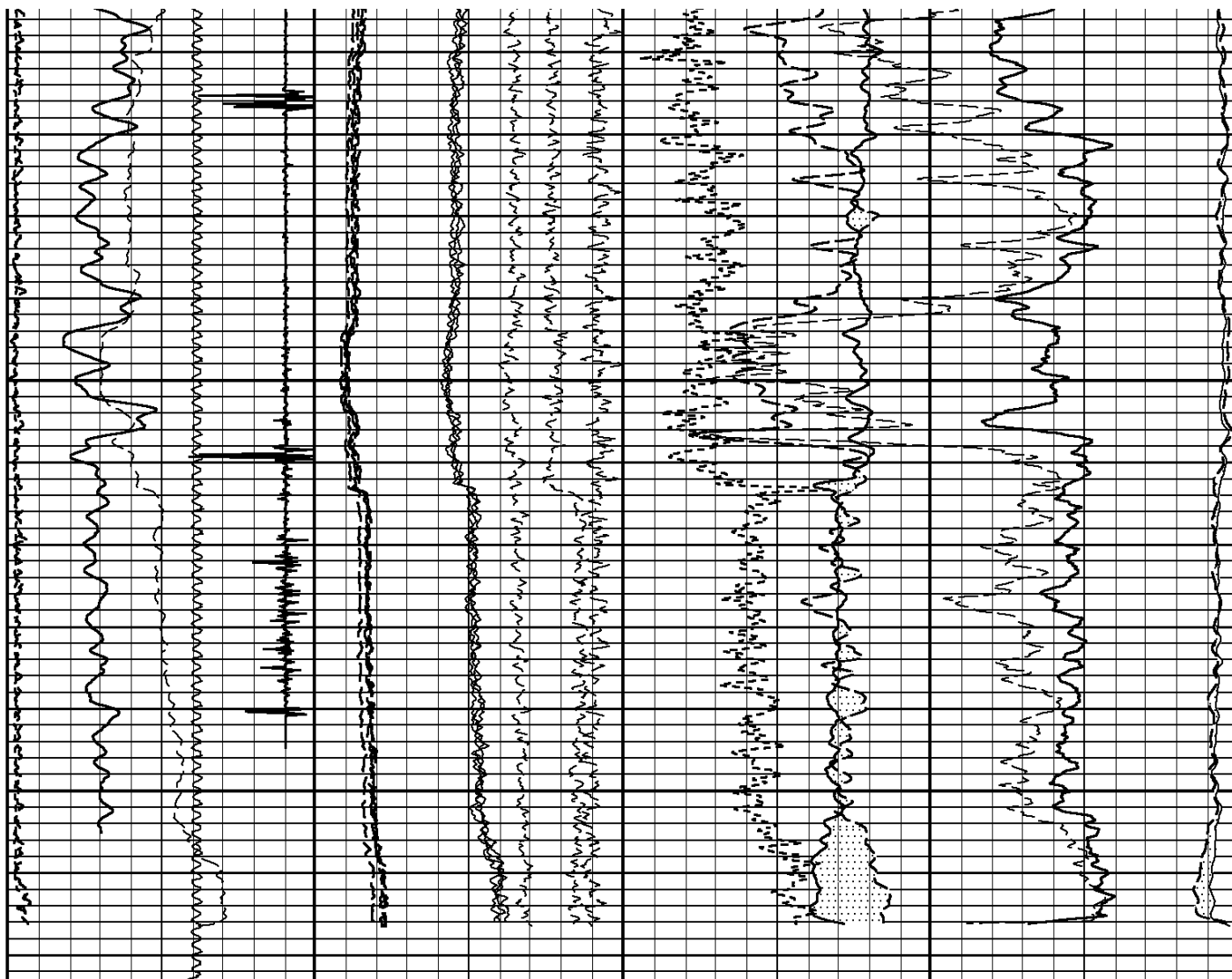


7200

7300



7400



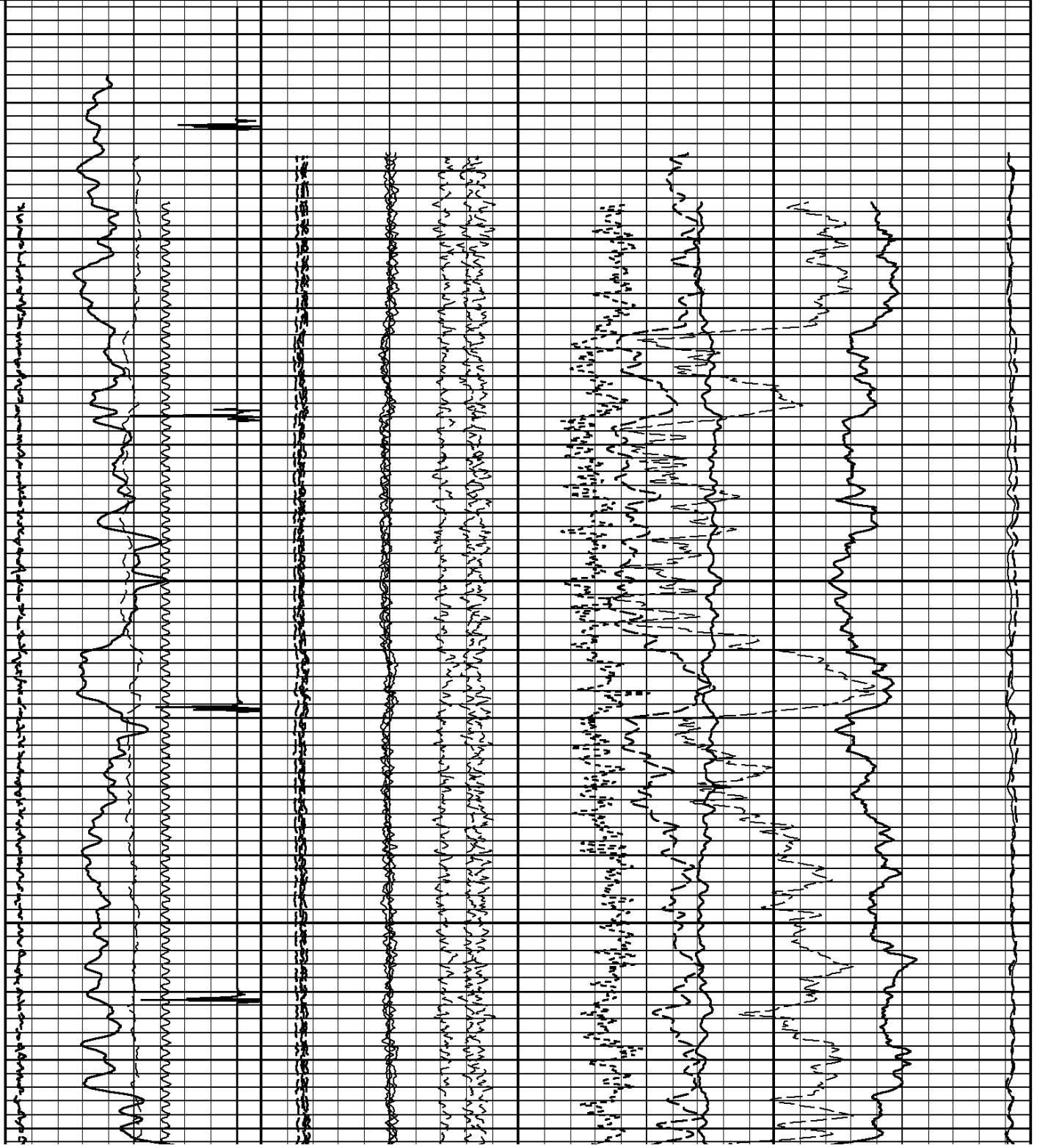
| | | | | |
|------------------------|------------------------|---------------|--------------------------|------------------------|
| Tension | OUTPUT QUALITY | NB91 | Borehole Ratio | |
| 0 2000 | 0.0 200000.0 | 0 2400000 | 12.5 | -2.5 |
| | GAMMA RAY | NB92 | Formation Sigma | |
| 0 API 200 | 0 200 | 0 2400000 | 60.0 | 0.0 |
| | CCL | NB93 | NphiS | |
| -10000 Millivolts 1000 | 0 1000 | 0 2400000 | 40.0 | 0.0 |
| | Near Background | NB94 | RATIO | NEAR 1 |
| 0.0 40000.0 | 0 40000.0 | 0 2400000 | 6.0 1.0 | 240.0 CPS 0.0 |
| | Far Background | FB92 | Ratio Bore n to f | FAR 1 |
| 0.0 4000.0 | 0 4000.0 | -80000 160000 | -1.0 14.0 | 40.0 Counts/Second 0.0 |
| | Line Speed | FB93 | | |
| -50.0 Feet/Min 50.0 | -50.0 50.0 | -80000 160000 | | |
| | | FB94 | | |
| | | -80000 160000 | | |

| | | | | | | | | | | | | | |
|--|-----|------|--|------|-----|------|--|------|-----|------|--|------|-----|
| <table> <tr><td colspan="2">NBPS</td></tr> <tr><td>-1.5</td><td>1.5</td></tr> <tr><td colspan="2">SB4Q</td></tr> <tr><td>-8.0</td><td>7.0</td></tr> <tr><td colspan="2">HESC</td></tr> <tr><td>-7.0</td><td>8.0</td></tr> </table> | | NBPS | | -1.5 | 1.5 | SB4Q | | -8.0 | 7.0 | HESC | | -7.0 | 8.0 |
| NBPS | | | | | | | | | | | | | |
| -1.5 | 1.5 | | | | | | | | | | | | |
| SB4Q | | | | | | | | | | | | | |
| -8.0 | 7.0 | | | | | | | | | | | | |
| HESC | | | | | | | | | | | | | |
| -7.0 | 8.0 | | | | | | | | | | | | |
| START DEPTH: 7473.3 DIRECTION: UP DATE: 01/19/2015 TIME: 10:12 MODE: ORIGINAL 108854831 PNDMAIN | | | | | | | | | | | | | |
| MAIN PASS DEPTH SCALE: 5":100' LOGGED VERSION: 2012.07.18.162" | | | | | | | | | | | | | |

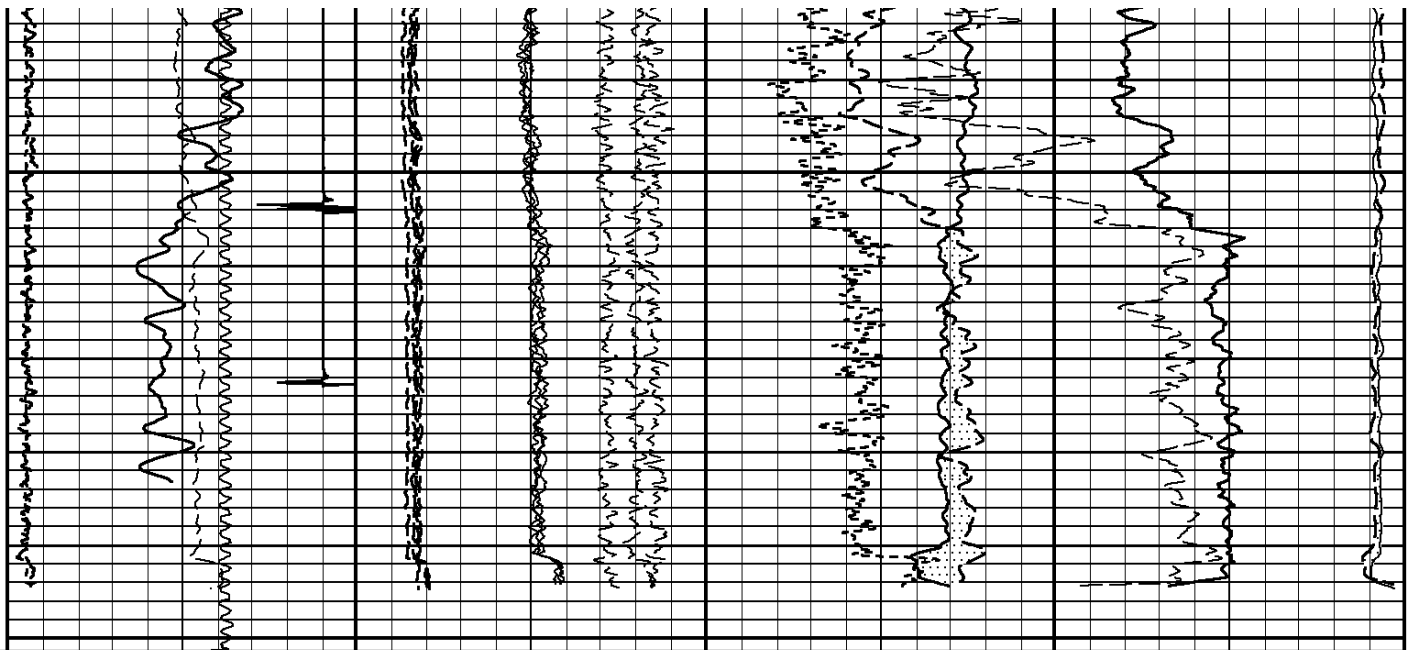
| | | | | | |
|---|--|---------------|------------------------------------|------------------------|--|
| DEPTH SCALE: 5":100' | | | PROCESSED VERSION: 2012.07.18.162" | | |
| REPEAT PASS | | | | | |
| 108854831 PNDREPEAT | | | | | |
| FINISH DEPTH: 3615.3 Feet DIRECTION: UP DATE: 01/19/2015 TIME: 10:14 MODE: ORIGINAL | | | | | |
| | | HESC | | | |
| | | -7.0 8.0 | | | |
| | | SB4Q | | | |
| | | -8.0 7.0 | | | |
| | | NBPS | | | |
| | | -1.5 1.5 | | | |
| | | FB94 | | | |
| | | -80000 160000 | | | |
| Line Speed | | FB93 | | | |
| -50.0 Feet/Min 50.0 | | -80000 160000 | | | |
| Far Background | | FB92 | | Ratio Bore n to f | |
| 0.0 4000.0 | | -80000 160000 | | -1.0 14.0 | |
| Near Background | | NB94 | | FAR 1 | |
| | | | | 40.0 Counts/Second 0.0 | |
| | | | | RATIO | |
| | | | | NEAR 1 | |

| | | | | | |
|------------------------|--|-----------|--|-----------------------|--|
| 0.0 40000.0 | | 0 2400000 | | 6.0 1.0 240.0 CPS 0.0 | |
| CCL | | NB93 | | NphiS | |
| -10000 Millivolts 1000 | | 0 2400000 | | 40.0 0.0 | |
| GAMMA RAY | | NB92 | | Formation Sigma | |
| 0 API 200 | | 0 2400000 | | 60.0 0.0 | |
| Tension OUTPUT QUALITY | | NB91 | | Borehole Ratio | |
| 0 2000 0.0 200000.0 | | 0 2400000 | | 12.5 -2.5 | |

3700



3800



| Tension | OUTPUT QUALITY | NB91 | Borehole Ratio | |
|------------------------|------------------------|---------------|--------------------------|------------------------|
| 0 2000 | 0.0 200000.0 | 0 2400000 | 12.5 | -2.5 |
| | GAMMA RAY | NB92 | Formation Sigma | |
| 0 API 200 | 0 200 | 0 2400000 | 60.0 | 0.0 |
| | CCL | NB93 | NphiS | |
| -10000 Millivolts 1000 | 0 1000 | 0 2400000 | 40.0 | 0.0 |
| | Near Background | NB94 | RATIO | NEAR 1 |
| 0.0 40000.0 | 0 40000.0 | 0 2400000 | 6.0 1.0 | 240.0 CPS 0.0 |
| | Far Background | FB92 | Ratio Bore n to f | FAR 1 |
| 0.0 4000.0 | 0 4000.0 | -80000 160000 | -1.0 14.0 | 40.0 Counts/Second 0.0 |
| | Line Speed | FB93 | | |
| -50.0 Feet/Min 50.0 | -50.0 50.0 | -80000 160000 | | |
| | | FB94 | | |
| | | -80000 160000 | | |
| | | NBPS | | |
| | | -1.5 1.5 | | |
| | | SB4Q | | |
| | | -8.0 7.0 | | |
| | | HESC | | |
| | | -7.0 8.0 | | |

START DEPTH: 3851.5 DIRECTION: UP DATE: 01/19/2015 TIME: 10:14 MODE: ORIGINAL

108854831 PNDREPEAT

REPEAT PASS

DEPTH SCALE: 5":100'

LOGGED VERSION: 2012.07.18.162"

1 7/16 Adapter Head

Weight 2.2 LBS.
Length 12 IN.
Max. Diameter

Total Stack Weight in air
Total Stack Length 32.0 FT.

Pulsed Neutron Processor

Weight 49 LBS.
Length 12.9 FT.
Max. Diameter 1.69 IN.

Pulsed Neutron Detectors

Weight 29.9 LBS
Length 19.0 FT.
Max. Diameter 1.69 IN.

Pulsed Neutron Generator

Weight 26 LBS.
Length 8.7 FT.
Max. Diameter 1.69 IN.

CCL 28.51 FT.

GR 19.15 FT.

FAR DETECTOR 7.66 FT
From Target ()

NEAR DETECTOR 7.02 FT
From Target ()

TARGET 7.10 FT.

1.00 in. dia.

(cm)

1.44 in. dia.

(cm)

1.69 in. dia.

1.69 in. dia.

1.69 in. dia.

COMPANY URSA OPERATING COMPANY

WELL VALLEY FARMS 34D-14-06-92



FIELD GRAVEL TREAD

COUNTY GARFIELD

STATE COLORADO

Weatherford®