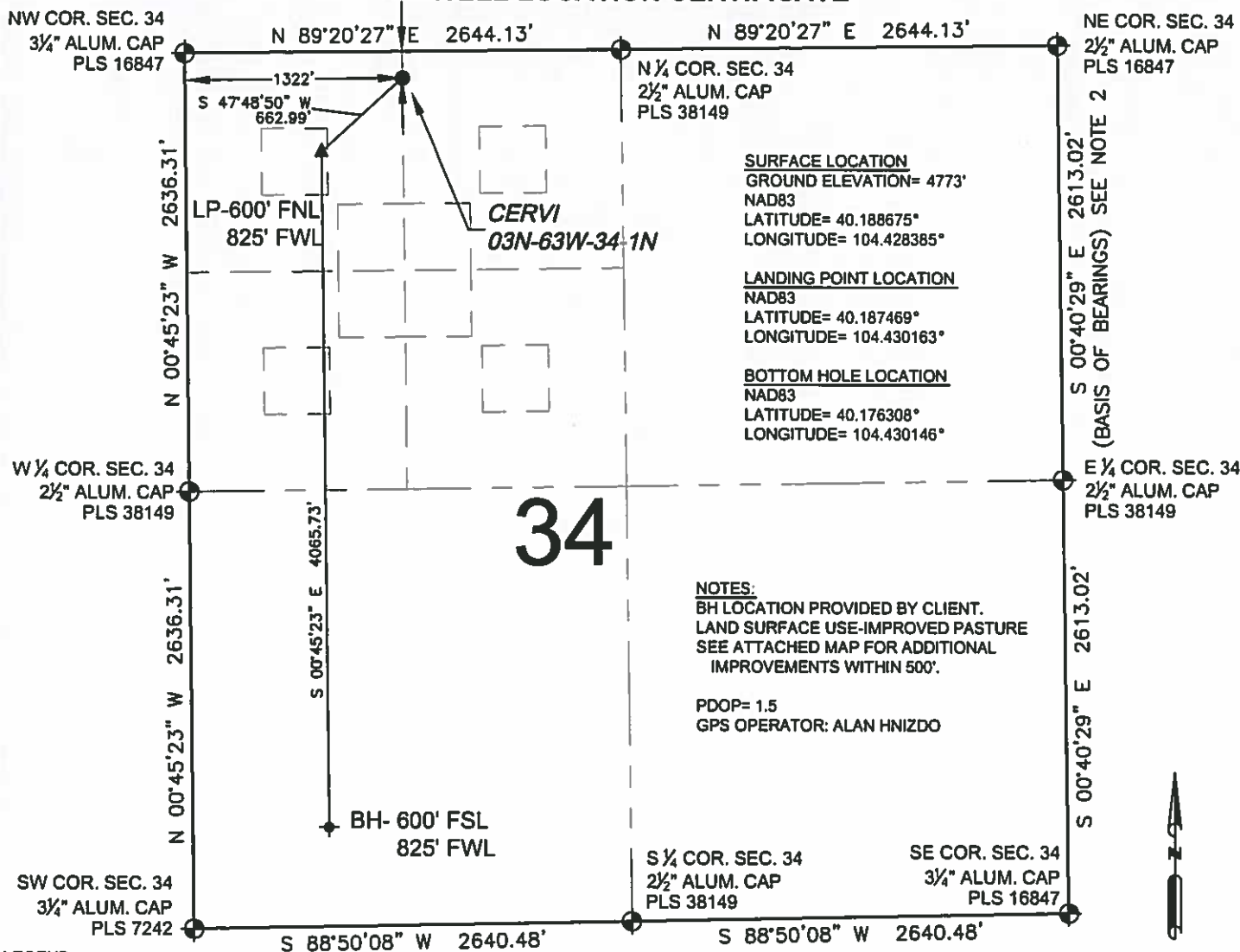


# CERVI 03N-63W-34-1N WELL LOCATION CERTIFICATE



**SURFACE LOCATION**  
GROUND ELEVATION= 4773'  
NAD83  
LATITUDE= 40.188675°  
LONGITUDE= 104.428385°

**LANDING POINT LOCATION**  
NAD83  
LATITUDE= 40.187469°  
LONGITUDE= 104.430163°

**BOTTOM HOLE LOCATION**  
NAD83  
LATITUDE= 40.176308°  
LONGITUDE= 104.430146°

**NOTES:**  
BH LOCATION PROVIDED BY CLIENT.  
LAND SURFACE USE-IMPROVED PASTURE  
SEE ATTACHED MAP FOR ADDITIONAL  
IMPROVEMENTS WITHIN 500'.

PDOP= 1.5  
GPS OPERATOR: ALAN HNIZDO

## LEGEND

- = EXISTING MONUMENT
- = CALCULATED POSITION
- = PROPOSED WELL
- ◆ = EXISTING WELL
- ◆ = BOTTOM HOLE
- ▲ = LANDING POINT
- LP = LANDING POINT
- BH = BOTTOM HOLE

**WELL CERVI 03N-63W-34-1N TO BE  
LOCATED 160' FNL AND 1322' FWL**

## NOTES:

- THIS FIELD SURVEY CONFORMS TO THE MINIMUM STANDARDS SET BY THE C.O.G.C.C., RULE NO. 215
- BEARINGS ARE BASED UPON THE EAST LINE OF THE NORTHEAST QUARTER OF SECTION 34, TOWNSHIP 3 NORTH, RANGE 63 WEST OF THE 6TH P.M., COUNTY OF WELD, STATE OF COLORADO AS BEARING S00°40'29"E BETWEEN THE MONUMENTS SHOWN HEREON.
- GRID DISTANCES ARE SHOWN, AS GPS MEASURED IN THE FIELD, WITH TIES TO WELLS MEASURED PERPENDICULAR TO SECTION LINES. TO GET GROUND DISTANCES MULTIPLY THE SHOWN DISTANCE BY 1.000268222.
- ELEVATIONS SHOWN ARE NAVD 88, AS DERIVED BY GPS OBSERVATIONS.

NOTICE: ACCORDING TO COLORADO LAW YOU MUST COMMENCE ANY LEGAL ACTION BASED UPON ANY DEFECT IN THIS SURVEY WITHIN THREE YEARS AFTER YOU FIRST DISCOVER SUCH DEFECT. IN NO EVENT MAY ANY ACTION BASED UPON ANY DEFECT IN THIS SURVEY BE COMMENCED MORE THAN TEN YEARS FROM THIS SAID DATE OF THIS CERTIFICATION SHOWN HEREON.

I, JACOB S. FRISCH, A LICENSED PROFESSIONAL LAND SURVEYOR IN THE STATE OF COLORADO DO HEREBY CERTIFY TO **VERDAD OIL & GAS CORPORATION**, THAT THE SURVEY AND WELL LOCATION CERTIFICATE SHOWN HEREON WERE DONE BY ME OR UNDER MY DIRECT SUPERVISION AND THAT THE DRAWING SHOWN HEREON ACCURATELY DEPICTS THE PROPOSED LOCATION OF THE WELL. THIS CERTIFICATE DOES NOT REPRESENT A LAND SURVEY PLAT OR IMPROVEMENT SURVEY PLAT AS DEFINED BY C.R.S. 38-51-102 AND CANNOT BE RELIED UPON TO DETERMINE OWNERSHIP.

JACOB S. FRISCH, PLS 38149  
DATE: 12-02-14  
FOR AND ON BEHALF OF F.R.S., LLC



PREPARED BY:



FIELD DATE:  
11-15-14

DRAWING DATE:  
11-24-14

BY:  
KAD

CHECKED BY:  
MDCA

WELL NAME:

CERVI 03N-63W-34-1N

SURFACE LOCATION:

NW 1/4, SEC. 34, T3N, R63W, 6TH P.M.  
WELD COUNTY, COLORADO

PREPARED FOR:

