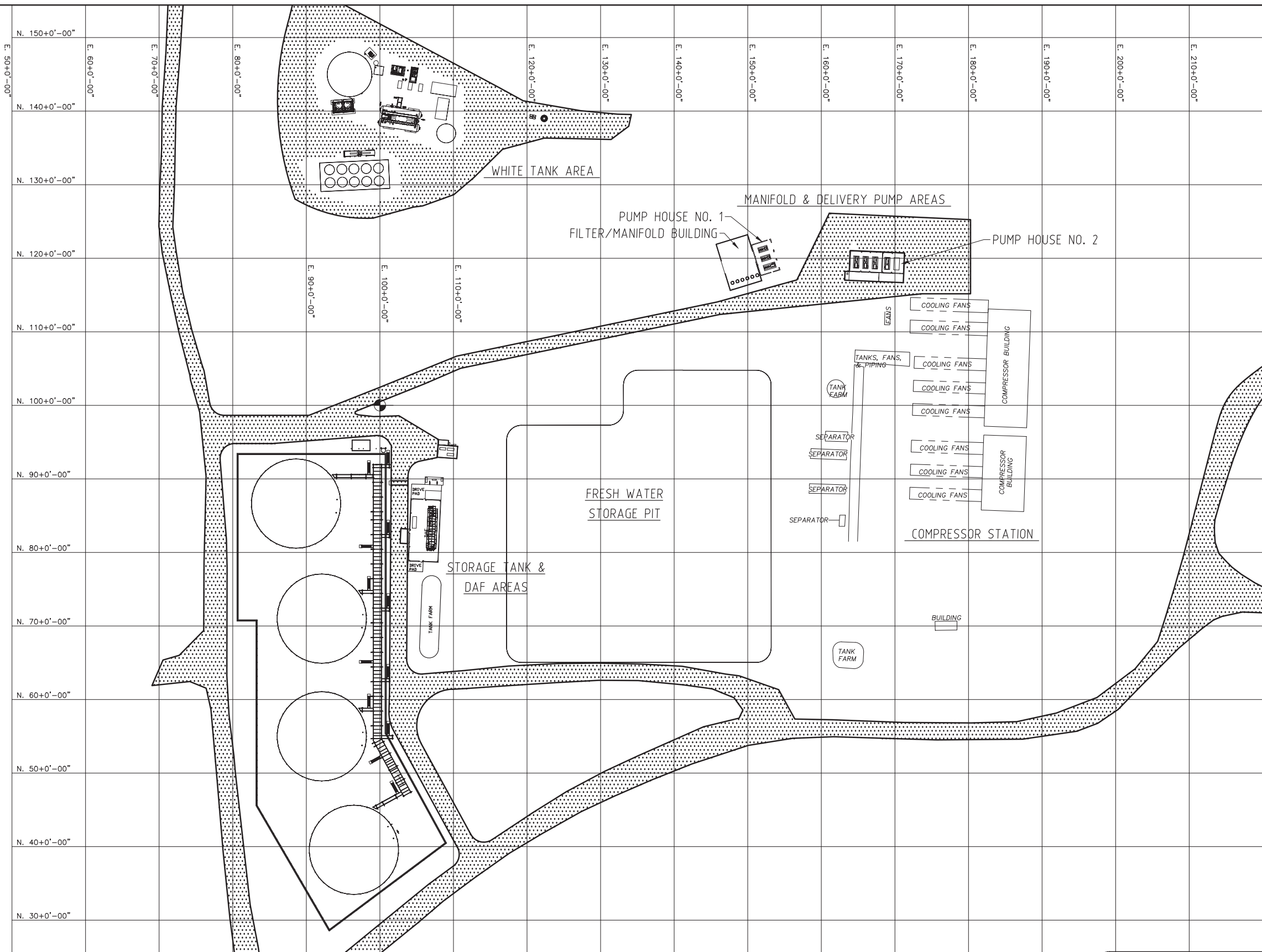


Appendix 5: MFWF – Drawings and Figures

Appendix 5A: As Built Drawings



NORTHING & EASTING GRID
FROM DWG NP-MDF-W-5210

AS BUILT DRAWING

REFERENCE DRAWINGS	DWG. NO.
.	.
.	.
.	.
.	.

CAUTION : READ BEFORE EXCAVATION
ALL EXCAVATIONS MUST BE CARRIED OUT AS PER
"ENCANA'S GROUND DISTURBANCE PRACTICE"

NO.	DATE (YYYY-MM-DD)	PROJECT DESCRIPTION	PROJ.	AFE	EPCM Co.	EPCM No.	APPD.
A	2014-09-09	PRELIMINARY - ISSUED FOR APPROVAL	.	.	MPA	.	.
.
.
.
.
.
.
.
.
.

ISSUE STAGE	DATE (YYYY-MM-DD)	BY	CHKD.	APPD.
Prelim. (A)	2014-09-09	WDS	RDL	.
.
.
.
.
.
.
.
.
.

REV. NUMBER
A

PERMIT STAMP	ENGINEER'S STAMP

PERMIT STAMP AND PROFESSIONAL STAMP
AFFIXED ABOVE SHALL APPLY ONLY TO REV(S)

EPCM No.

MPA CONSULTING ENGINEERS, INC.

TITLE

MIDDLE FORK WATER TREATMENT FACILITIES
SITE PLAN - OVERALL

AREA

NORTH PICEANCE

MAIN FAC.

-

MAIN LSD.

-

FAC. TYPE

-

SITE LSD.

-

SCALE

NTS (A1 Size)

EPCM No.

G13070-1-5111

CLASS

A

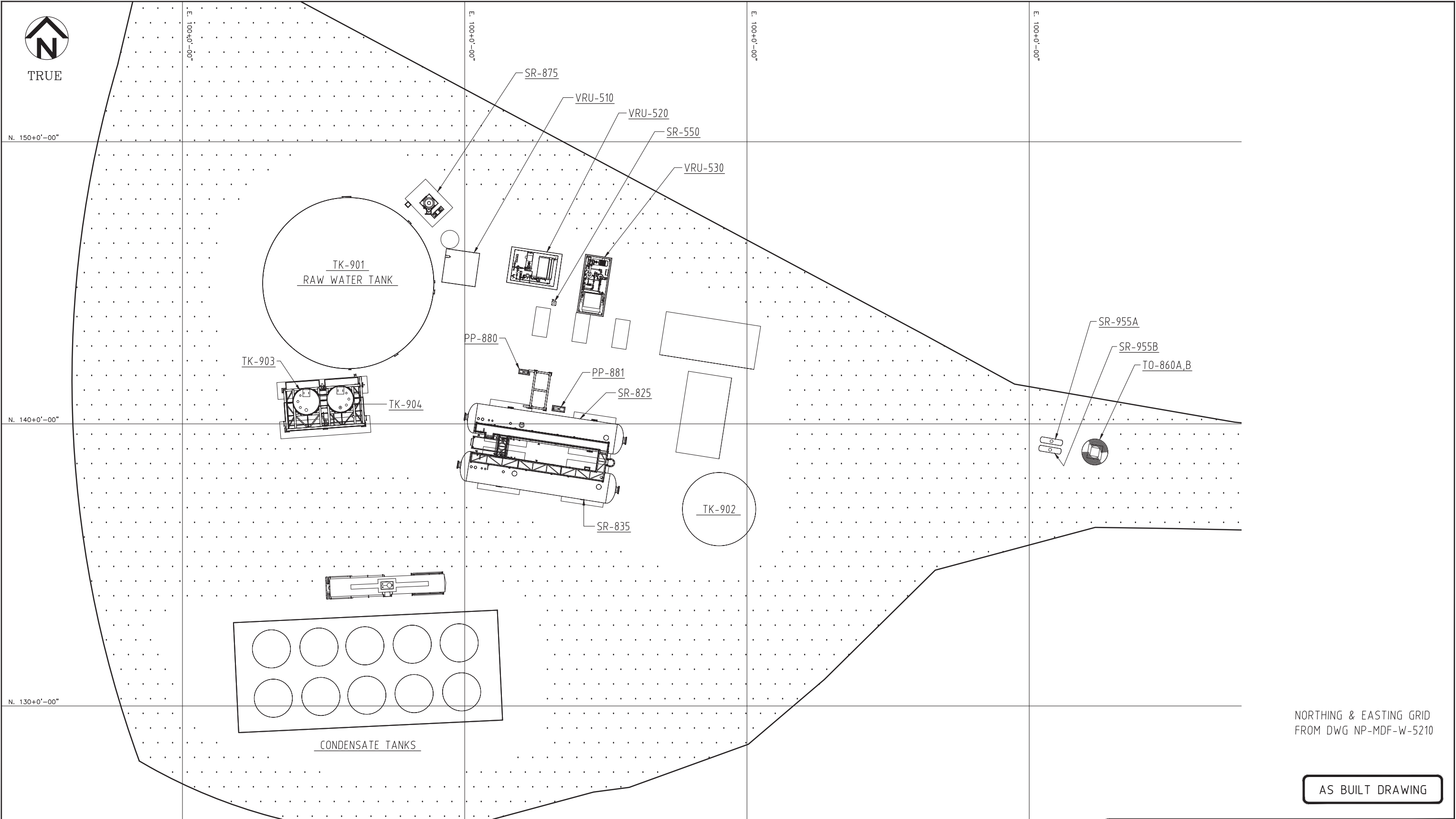
FILE NO.

NP-MDF-W-3101



AS BUILT DRAWING

[illegible]

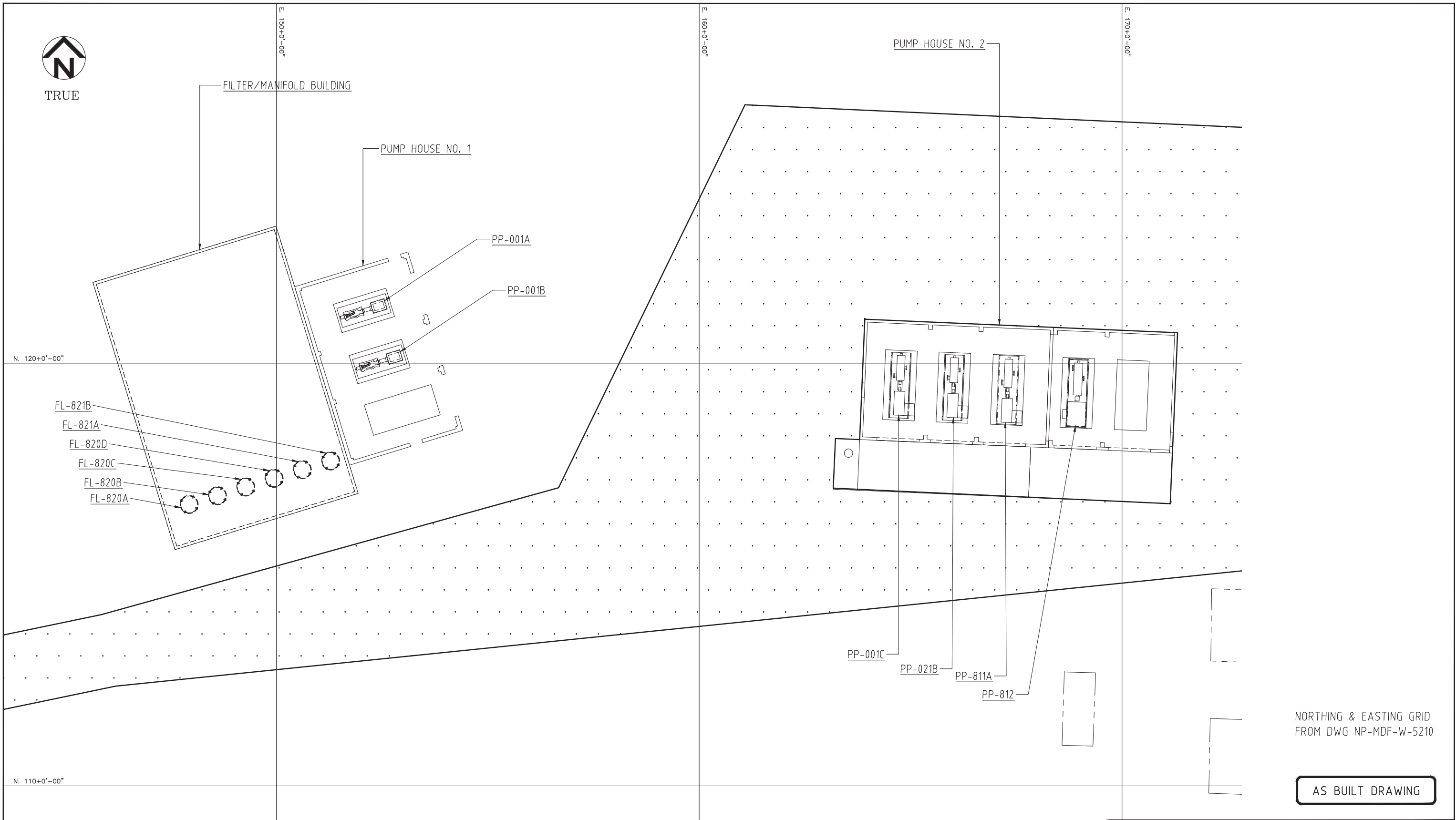


AS BUILT DRAWING

REFERENCE DRAWINGS		DWG. NO.	PROJECT DESCRIPTION								PROJ.	AFE	EPCM Co.	EPCM No.	APPD.	ISSUE STAGE	DATE	BY	CHKD.	APPD.	PERMIT STAMP	ENGINEER'S STAMP				
.		.	A	2014-09-09	PRELIMINARY - ISSUED FOR APPROVAL										.	.	MPA	
.		.	.	-
.		.	.	-
.		.	.	-
.		.	.	-
.		.	.	-
.		.	.	-
.		.	.	-
.		.	.	-
.		.	.	-
.		.	.	-
.		.	.	-
.		.	.	-
.		.	.	-
.		.	.	-
.		.	.	-
.		.	.	-
.		.	.	-
.		.	.	-
.		.	.	-
.		.	.	-
.		.	.	-
.		.	.	-
.		.	.	-
.		.	.	-
.		.	.	-
.		.	.	-
.		.	.	-
.		.	.	-
.		.	.	-
.		.	.	-
.		.	.	-
.		.	.	-
.		.	.	-
.		.	.	-
.		.	.	-
.		.	.	-
.		.	.	-
.		.	.	-
.		.	.	-
.		.	.	-
.		.	.	-
.		.	.	-
.		.	.	-
.		.	.	-
.		.	.	-
.		.	.	-
.		.	.	-
.		.	.	-
.		.	.	-
.		.	.	-
.		.	.	-
.		.	.	-
.		.	.	-
.		.	.	-
.		.	.	-
.		.	.	-
.		.	.	-
.		.	.	-
.		.	.	-
.		.	.	-
.		.	.	-
.		.	.	-
.		.	.	-
.		.	.	-	.	.										.</										



TRUE



NORTHING & EASTING GRID
FROM DWG NP-MDF-W-5210

AS BUILT DRAWING

REFERENCE DRAWINGS	DWG. NO.
.	.
.	.
.	.
.	.

CAUTION : READ BEFORE EXCAVATION
ALL EXCAVATIONS MUST BE CARRIED OUT AS PER
"ENCANA'S GROUND DISTURBANCE PRACTICE"

NO.	DATE (YYYY-MM-DD)	PROJECT DESCRIPTION	PROJ.	AFE	EPCM Co.	EPCM No.	APPD.
A	2014-09-09	PRELIMINARY - ISSUED FOR APPROVAL	.	.	MPA	.	.
.
.
.
.
.
.
.
.
.

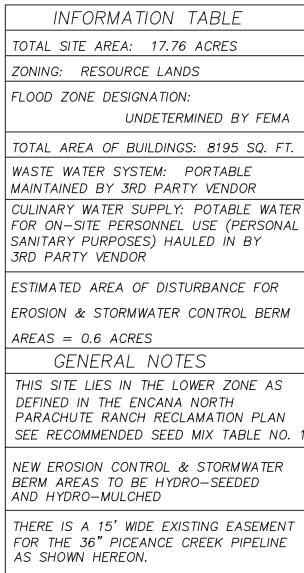
ISSUE STAGE	DATE (YYYY-MM-DD)	BY	CHKD.	APPD.
Prelim. (A)	2014-09-09	WDS	RDL	.
.
.
.
.
.
.
.
.
.

PERMIT STAMP	ENGINEER'S STAMP

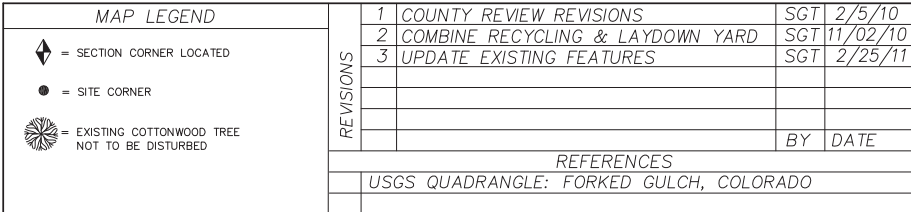
MAIN FAC.	-
MAIN LSD.	-
FAC. TYPE	-
SITE LSD.	-
SCALE	NTS (A1 Size)
EPCM No.	G13070-1-5114

MPA CONSULTING ENGINEERS, INC.	
TITLE MIDDLE FORK WATER TREATMENT FACILITIES SITE PLAN - MANIFOLD BUILDING AND DELIVERY PUMP AREAS	
AREA NORTH PICEANCE	CLASS A
FILE NO. NP-MDF-W-3104	

Appendix 5B: MFWRF – Existing Site Plan



Recommended Seed Mix for Lower Zone Disturbances		
Species	Variety (cultivar)	Seeding Rate (PLS*/Ac)
Grasses		
Western Wheatgrass	Arriba	3.0 lbs
Needle-and-Thread Grass		1.0 lbs
Thickspike Wheatgrass	Critana	2.0 lbs
Indian Ricegrass	Rimrock	2.0 lbs
Bluebunch Wheatgrass or Beardless Bluebunch	P7 preferred, Goldar, Anatone or Whitmar	1.0 lbs
Forbs		
Scarlet Globemallow		0.5 lbs
Utah Sweetvetch		1.0 lbs
Cicer Milkvetch		0.5 lbs
Lewis Flax		0.5 lbs
Shrubs		
Rubber rabbitbrush		1.0 lbs
Four-wing Saltbush	Wytano	1.0 lbs
Garden Saltbush and/or Shadscale Saltbush		1.0 lbs
*Pure Live Seed		
	Total	14.5 lbs pLS/ac



Total Site = 17.76 Acres

TRACT OF LAND LOCATED IN LOTS 10, 13 AND 14 OF SECTION 30, AND LOT 3 OF SECTION 31, T5S, R95W, 6TH P.M., GARFIELD COUNTY, COLORADO, SAID TRACT BEING MORE PARTICULARLY DESCRIBED AS FOLLOWS:

COMMENCING AT THE SOUTHWEST CORNER OF SAID SECTION 30 AND RUNNING

THENCE N00°24'09"E, 491.48 FEET ALONG THE WEST LINE THEREOF TO THE NORTHEAST CORNER OF SECTION 36, T5S, R96W;

THENCE S74° 57'28"E, 274.61 FEET TO THE POINT OF BEGINNING;

THENCE N07°43'01"W, 60.17 FEET; THENCE N00° 07'35"E, 299.44 FEET;

THENCE N08° 03'19"E, 629.94 FEET; THENCE S63° 26'54"E, 373.86 FEET;

THENCE S50° 20'11"E, 257.03 FEET; THENCE N82° 28'11"E, 333.71 FEET;

THENCE S11° 22'48"W, 158.30 FEET; THENCE S87° 01'55"W, 133.20 FEET;

THENCE S00° 00'00"W, 554.26 FEET; THENCE N87°39'29"N, 102.72 FEET;

THENCE S63°27'07"W, 324.23 FEET; THENCE S52°20'03"W, 319.42 FEET;

THENCE S40°19'11"W, 114.38 FEET; THENCE N07°43'01"W, 448.17 FEET TO THE POINT OF BEGINNING;

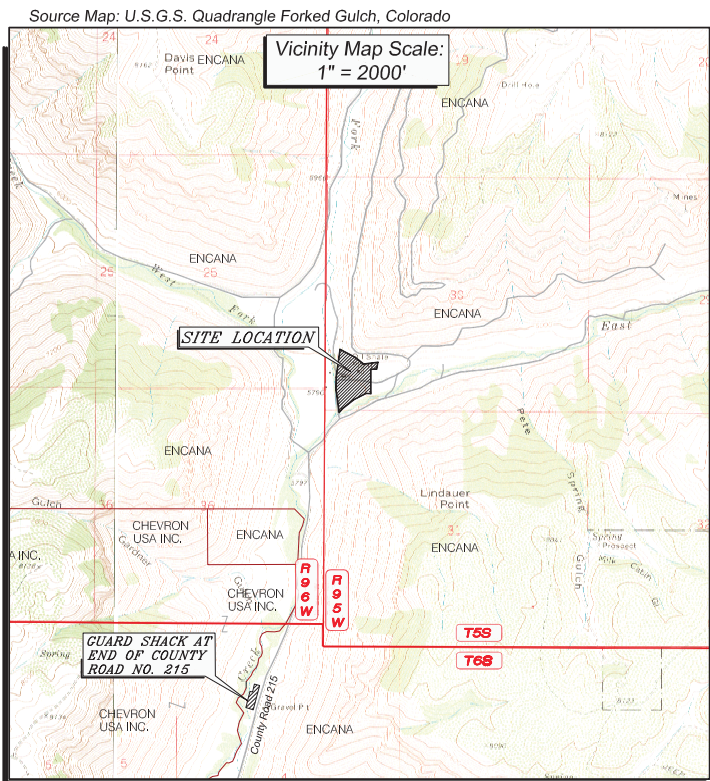
SAID TRACT CONTAINING 17.76 ACRES, MORE OR LESS.

THE BASIS OF BEARING FOR THIS SURVEY IS N00° 24'09"E, 2640.01 FEET BETWEEN FOUND MONUMENTS AT THE NORTHEAST CORNER AND THE EAST ONE-QUARTER CORNER OF SECTION 36, T5S, R96W, 6TH

I, TED T. TAGGART OF FRUITA, COLORADO HEREBY CERTIFY THAT THIS MAP WAS MADE FROM NOTES TAKEN DURING AN ACTUAL SURVEY MADE BY ME OR UNDER MY DIRECTION FOR ENCANA OIL & GAS (USA) INC. AND THAT THE RESULTS OF WHICH ARE CORRECTLY SHOWN HEREON.



Travel North out of Parachute, Colorado on County Road 215 for approximately 11.1 miles to the Middle Fork Location.



VS	1	COUNTY REVIEW REVISIONS	SGT	2/5/10
	2	COMBINE RECYCLING & LAYDOWN YARD	SGT	11/02/10
	3	UPDATE EXISTING FEATURES	SGT	2/25/11

REFERENCES

USGS QUADRANGLE: FORKED GULCH, COLORADO

PREPARED FOR:



EnCana Oil & Gas (USA) Inc

PREPARED BY:



Wasatch Surveying Associates
906 Main Street
Evanston, Wyoming 82930
Phone No. (307) 789-4545

TITLE:

EnCana Oil & Gas (USA) Inc.
Middle Fork Water Recycling Facility
Existing Site Plan

Located in
Section 30, T5S, R95W, 6th P.M.
GARFIELD COUNTY, COLORADO

DATE:	12/01/10
SCALE:	1" = 80'
PROJECT NO.:	10-04-90
DRAWING NAME:	Site Plan
SHEET NO.:	1 of 1

Appendix 5C: MFWRF – Stormwater Plan

SITE LEGAL DESCRIPTION

COMMENCING AT THE SOUTHWEST CORNER OF SAID SECTION 30 AND RUNNING
THENCE N00°24'09"E, 491.48 FEET ALONG THE WEST LINE THEREOF TO THE NORTHEAST CORNER OF
SECTION 36, T5S, R9W;
THENCE S74°57'28"E, 274.81 FEET TO THE POINT OF BEGINNING;
THENCE N07°43'01"W, 60.17 FEET; THENCE N00°07'35"E, 299.44 FEET;
THENCE N08°03'19"E, 629.94 FEET; THENCE S63°26'54"E, 373.86 FEET;
THENCE S50°20'11"E, 257.03 FEET; THENCE N82°28'11"E, 333.71 FEET;
THENCE S11°22'48"W, 158.60 FEET; THENCE S87°01'55"W, 132.20 FEET;
THENCE N00°00'00"W, 158.66 FEET; THENCE N90°00'00"W, 70.70 FEET;
THENCE N67°52'06"W, 166.49 FEET; THENCE N83°21'22"E, 106.03 FEET;
THENCE S87°56'44"W, 158.76 FEET; THENCE S85°56'31"W, 238.09 FEET;
THENCE S83°22'48"W, 156.78 FEET TO THE POINT OF BEGINNING.

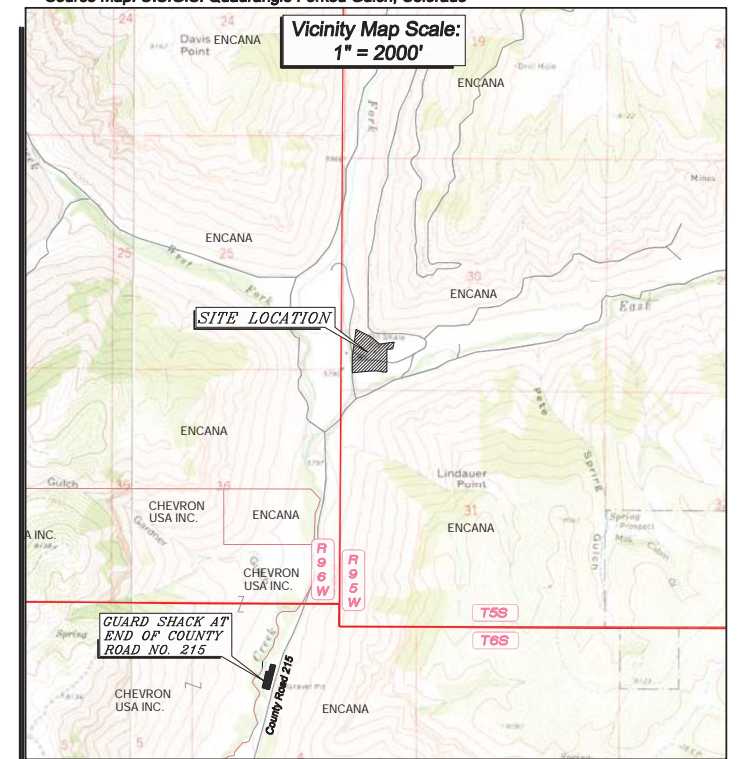
THE BASIS OF BEARING FOR THIS SURVEY IS N00°24'09"E, 2640.01 FEET BETWEEN FOUND MONUMENTS AT THE NORTHEAST CORNER AND THE EAST ONE-QUARTER CORNER OF SECTION 36, T5S, R96W, 6TH P.M.

I, TED T. TAGGART OF FRUITA, COLORADO HEREBY CERTIFY THAT THIS MAP WAS MADE FROM NOTES TAKEN DURING AN ACTUAL SURVEY MADE BY ME OR UNDER MY DIRECTION FOR ENCANA OIL & GAS (USA) INC. AND THAT THE RESULTS OF WHICH ARE CORRECTLY SHOWN HEREON.



Travel North out of Parachute, Colorado on County Road 215 for approximately 11.1 miles to the Middle Fork Location.

Vicinity Map Scale:
1" = 2000'



Recommended Seed Mix for Lower Zone Disturbances		
Species	Variety (cultivar)	Seeding Rate (PLS*/Ac)
Grasses		
Western Wheatgrass	Arriba	3.0 lbs
Needle-and-Thread Grass		1.0 lbs
Thickspike Wheatgrass	Critana	2.0 lbs
Indian Ricegrass	Rimrock	2.0 lbs
Blueschinn Wheatgrass or Beardless Blueschinn	P7 preferred, Coldor, Anatone or Whitmar	1.0 lbs
Forbs		
Scarlet Globemallow		0.5 lbs
Utah Sweetvetch		1.0 lbs
Cocor Milkvetch		0.5 lbs
Lewis Flax		0.5 lbs
Shrubs		
Rubber rabbitbrush		1.0 lbs
Four-wing Saltbush	Wytano	1.0 lbs
Gardner Saltbush and/or Shoshone Saltbush		1.0 lbs
*Price per Seed		14.5 lbs p/s/ac
		Total 14.5 lbs p/s/ac

N00°24'09"E, 2640.01' between
N.E. Cor. and E1/4 of Section 36






LAND OWNER:
EnCANA OIL AND GAS (USA) INC.

EAST 1/4
CORNER
SECTION 36
1916 USGLO
BRASS CAP

217,000 bbl Recycle Water Storage Pond
Approved Permit:
RES No. 2005-45

MF Compressor Station
Approved Permit:
RES No. 2005-85
RES No. 2008-44

LAND OWNER:
EnCANA OIL AND GAS (USA) INC.

MAP LEGEND		1 COUNTY REVIEW REVISIONS		SGT	2/5/10
 = SECTION CORNER LOCATED  = SITE CORNER  = WATER BAR ST = SEDIMENT TRAP  = BERM WITH SEED, ECB & FLEX  = EXISTING COTTONWOOD TREE NOT TO BE DISTURBED	REVISIONS				
				BY	DATE
		REFERENCES			
		USGS QUADRANGLE: FORKED GULCH, COLORADO			

	PREPARED BY:
--	---------------------



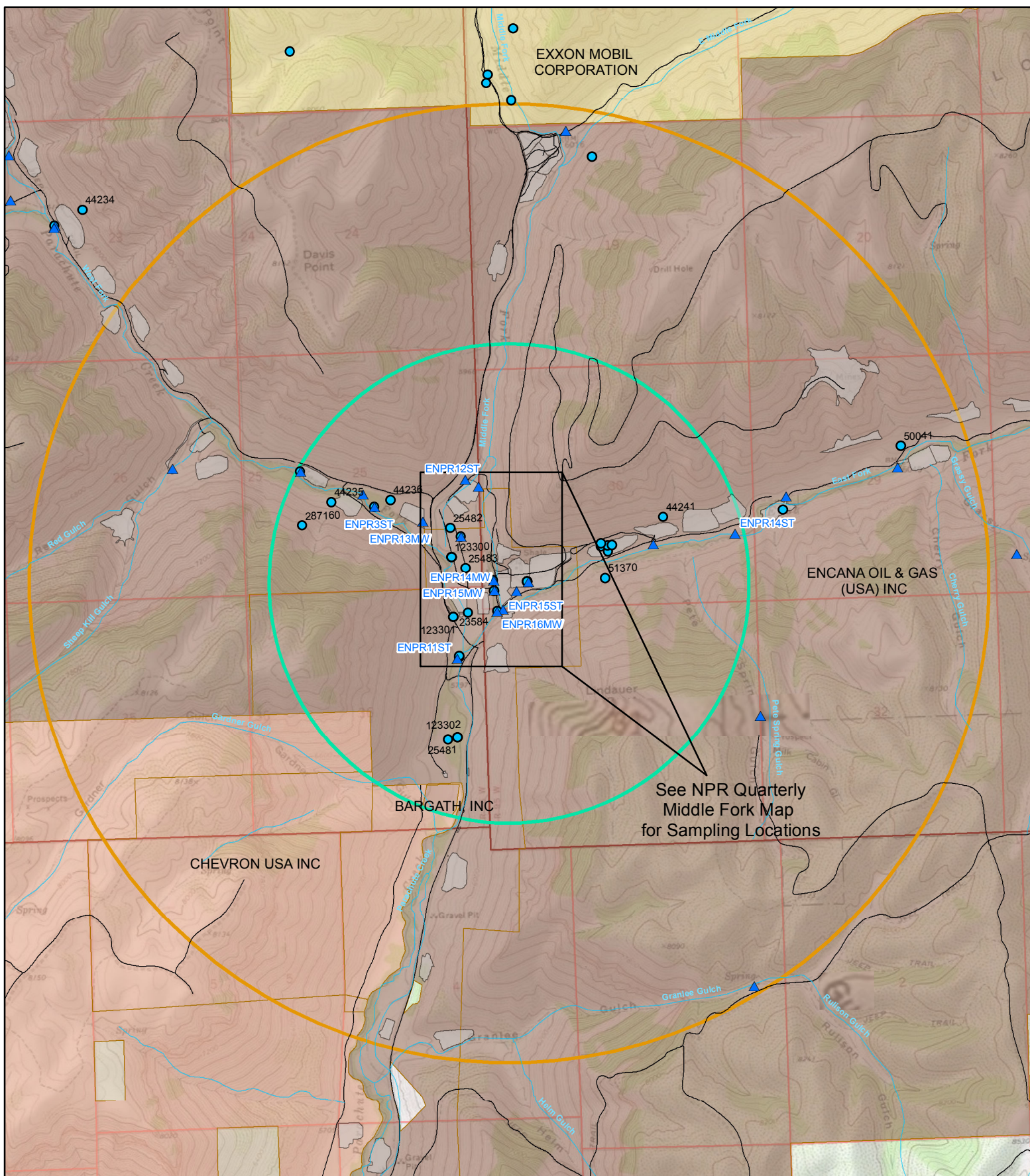
Wasatch Surveying Associates
906 Main Street
Evanston, Wyoming 82930
Phone No. (307) 789-4545

EnCana Oil & Gas (USA) Inc.
Middle Fork Water Recycling Facility
Stormwater Plan

Located in
Section 30, T5S, R95W, 6th P.M.
GARFIELD COUNTY, COLORADO

DATE: 10/09/09
SCALE: 1" = 60'
PROJECT NO.: 08-04-29
DRAWING NAME: Site Plan
SHEET NO.: 1 of 1

Appendix 5D: MFWF – Water Well Locations



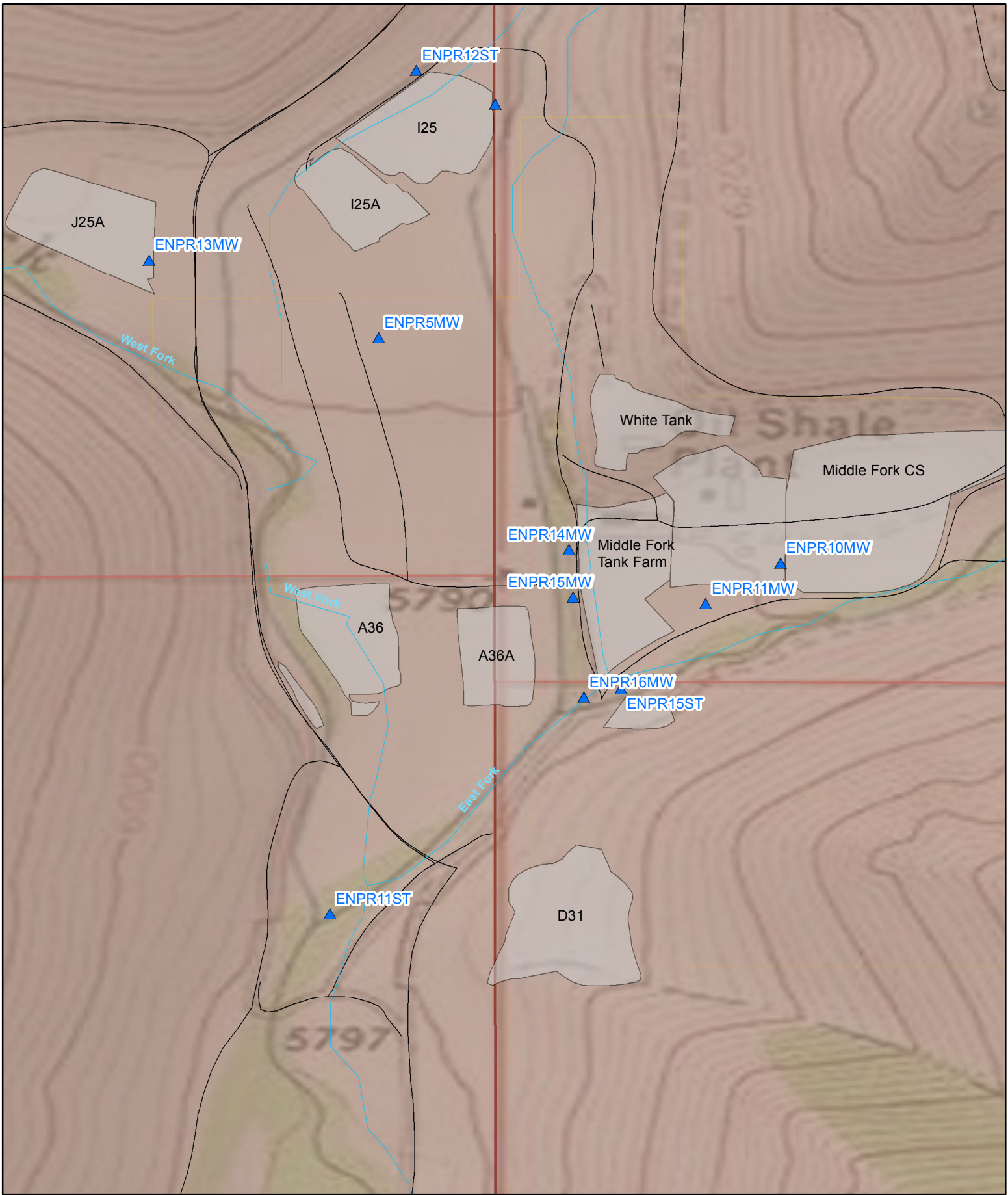
Legend

- ▲ Water Well Sampling Locations
- Permitted Water Wells
- Streams
- Access Roads
- Surface Disturbances
- 1 Mile Buffer
- 2 Mile Buffer
- Parcel Boundaries

Middle Fork Water Treatment Facility Water Well Locations

0 0.25 0.5 1 Miles





Legend

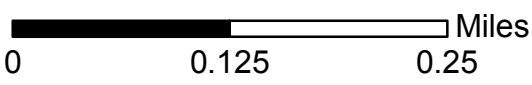
Sample Location

- ▲ Water Sampling Location
- Streams
- Access Roads
- ▭ Surface Disturbances

Parcel Boundaries

- ▭ Bureau of Land Management
- ▭ Encana Oil & Gas (USA), Inc.

NPR Quarterly
Middle Fork



Middle Fork Water Facility
Water Sampling Data (2013-2014)
note: sampling data is repeated across multiple pages

Sample Location	Sample Date	Alkalinity (mg/l)	Alkalinity, Bicarbonate (mg/l)	Alkalinity, Carbonate (mg/l)	Ammonia (mg/l)	Arsenic, Dissolved (mg/l)	Barium, Dissolved (mg/l)	Benzene (mg/l)	Bromide (mg/l)	Cadmium, Dissolved (mg/l)	Calcium, Dissolved (mg/l)	Chloride (mg/l)	Chromium, Dissolved (mg/l)	Copper, Dissolved (mg/l)	Ethane (mg/l)	Ethylbenzene (mg/l)
ENPR3ST	03/12/2013	310	310	BDL	BDL	BDL	0.053	BDL	BDL	BDL	56	38	BDL	BDL	BDL	BDL
ENPR3ST	06/13/2013	310	310	BDL	0.14	BDL	0.067	BDL	BDL	BDL	60	39	BDL	BDL	BDL	BDL
ENPR3ST	08/30/2013	320	320	BDL	BDL	BDL	0.055	BDL	BDL	BDL	58	42	BDL	BDL	BDL	BDL
ENPR3ST	11/18/2013	360	310	BDL	0.14	BDL	0.06	BDL	BDL	BDL	63	36	BDL	BDL	BDL	BDL
ENPR3ST	03/19/2014	300	290	BDL	BDL	BDL	0.056	BDL	BDL	BDL	58	39	BDL	BDL	BDL	BDL
ENPR3ST	06/09/2014	310	310	BDL	BDL	BDL	0.07	BDL	BDL	BDL	62	37	BDL	BDL	BDL	BDL
ENPR3ST	09/18/2014	320	320	BDL	BDL	BDL	0.06	BDL	BDL	BDL	63	29	BDL	BDL	BDL	BDL
ENPR3ST	11/19/2014	310	310	BDL	BDL	BDL	0.053	BDL	4.1	0.0057	56	27	BDL	BDL	BDL	BDL
ENPR11ST	03/12/2013	280	250	25	BDL	BDL	0.057	BDL	BDL	BDL	56	27	BDL	BDL	BDL	BDL
ENPR11ST	06/13/2013	280	280	BDL	0.12	BDL	0.065	BDL	BDL	BDL	54	23	BDL	BDL	BDL	BDL
ENPR11ST	08/30/2013	250	250	BDL	BDL	BDL	0.062	BDL	BDL	BDL	57	24	BDL	BDL	BDL	BDL
ENPR11ST	11/18/2013	260	250	BDL	BDL	BDL	0.06	BDL	BDL	BDL	55	22	BDL	BDL	BDL	BDL
ENPR11ST	03/19/2014	210	210	BDL	BDL	BDL	0.057	BDL	BDL	BDL	47	23	BDL	BDL	BDL	BDL
ENPR11ST	06/09/2014	260	260	BDL	BDL	BDL	0.07	BDL	BDL	BDL	64	22	BDL	BDL	BDL	BDL
ENPR11ST	09/18/2014	280	260	BDL	BDL	BDL	0.082	BDL	BDL	BDL	75	24	BDL	BDL	BDL	BDL
ENPR11ST	11/19/2014	280	270	BDL	BDL	BDL	0.051	BDL	BDL	0.0054	47	17	BDL	BDL	BDL	BDL
ENPR 12ST	03/12/2013	300	290	BDL	BDL	BDL	0.056	BDL	BDL	BDL	65	12	BDL	BDL	BDL	BDL
ENPR 12ST	06/13/2013	290	210	BDL	BDL	BDL	0.061	BDL	BDL	BDL	56	12	BDL	BDL	BDL	BDL
ENPR 12ST	08/30/2013	290	290	BDL	BDL	BDL	0.054	BDL	BDL	BDL	50	9	BDL	BDL	BDL	BDL
ENPR 12ST	11/18/2013	280	270	BDL	0.13	BDL	0.056	BDL	BDL	BDL	58	16	BDL	BDL	BDL	BDL
ENPR 12ST	03/19/2014	320	320	BDL	BDL	BDL	0.058	BDL	BDL	BDL	58	12	BDL	BDL	BDL	BDL
ENPR 12ST	06/09/2014	280	280	BDL	BDL	BDL	0.061	BDL	BDL	BDL	52	7.8	BDL	BDL	BDL	BDL
ENPR 12ST	09/18/2014	280	280	BDL	BDL	BDL	0.054	BDL	BDL	BDL	55	8.6	BDL	BDL	BDL	BDL
ENPR 12ST	11/19/2014	280	270	BDL	BDL	BDL	0.051	BDL	BDL	BDL	52	11	BDL	BDL	BDL	BDL
ENPR14ST	03/12/2013	260	260	BDL	BDL	BDL	0.065	BDL	BDL	BDL	61	24	BDL	BDL	BDL	BDL
ENPR14ST	06/13/2013	290	290	BDL	0.12	BDL	0.072	BDL	BDL	BDL	63	25	BDL	BDL	BDL	BDL
ENPR14ST	08/30/2013	270	270	BDL	0.11	BDL	0.066	BDL	BDL	BDL	58	21	BDL	BDL	BDL	BDL
ENPR14ST	11/18/2013	280	280	BDL	BDL	BDL	0.062	BDL	BDL	BDL	60	18	BDL	BDL	BDL	BDL
ENPR14ST	03/19/2014	230	230	BDL	BDL	BDL	0.067	BDL	BDL	BDL	61	21	BDL	BDL	BDL	BDL
ENPR14ST	06/09/2014	260	260	BDL	BDL	BDL	0.084	BDL	BDL	BDL	70	20	BDL	BDL	BDL	BDL
ENPR14ST	09/18/2014	280	280	BDL	BDL	BDL	0.08	BDL	BDL	BDL	74	21	BDL	BDL	BDL	BDL
ENPR14ST	11/19/2014	280	280	BDL	BDL	BDL	0.063	BDL	BDL	BDL	58	17	BDL	BDL	BDL	BDL
ENPR15ST	03/12/2013	270	260	BDL	BDL	BDL	0.062	BDL	BDL	BDL	59	28	BDL	BDL	BDL	BDL
ENPR15ST	06/13/2013	280	280	BDL	0.1	BDL	0.078	BDL	BDL	BDL	61	26	BDL	BDL	BDL	BDL
ENPR15ST	08/30/2013	260	260	BDL	0.9	BDL	0.064	BDL	BDL	BDL	52	24	BDL	BDL	BDL	BDL
ENPR15ST	11/18/2013	270	260	BDL	BDL	BDL	0.062	BDL	BDL	BDL	57	22	BDL	BDL	BDL	BDL
ENPR15ST	03/19/2014	250	240	BDL	BDL	BDL	0.056	BDL	BDL	BDL	48	22	BDL	BDL	BDL	BDL
ENPR15ST	06/09/2014	280	280	BDL	BDL	BDL	0.083	BDL	BDL	BDL	74	22	BDL	BDL	BDL	BDL
ENPR15ST	09/18/2014	280	270	BDL	BDL	BDL	0.065	BDL	BDL	BDL	64	18	BDL	BDL	BDL	BDL
ENPR15ST	11/19/2014	260	250	BDL	BDL	BDL	0.062	BDL	BDL	BDL	54	20	BDL	BDL	BDL	BDL
ENPR10MW	03/12/2013	340	340	BDL	BDL	BDL	0.095	BDL	0.25	BDL	74	54	BDL	BDL	BDL	BDL
ENPR10MW	06/13/2013	310	210	BDL	0.12	BDL	0.099	BDL	BDL	BDL	76	38	BDL	BDL	BDL	BDL
ENPR10MW	08/30/2013	350	350	BDL	BDL	BDL	0.048	BDL	BDL	BDL	39	45	BDL	BDL	BDL	BDL
ENPR10MW	11/18/2013	340	340	BDL	BDL	BDL	0.1	BDL	BDL	BDL	85	40	BDL	BDL	BDL	BDL
ENPR10MW	03/19/2014	330	330	BDL	BDL	BDL	0.1	BDL	BDL	BDL	79	37	BDL	BDL	BDL	BDL
ENPR10MW	06/09/2014	330	330	BDL	BDL	BDL	0.13	BDL	BDL	BDL	100	48	BDL	BDL	BDL	BDL
ENPR10MW	09/18/2014	340	340	BDL	BDL	BDL	0.11	BDL	BDL	BDL	99	44	BDL	BDL	BDL	BDL
ENPR10MW	11/19/2014	340	340	BDL	BDL	BDL	0.1	BDL	BDL	0.0058	88	40	BDL	BDL	BDL	BDL
ENPR11MW	03/12/2013	330	330	BDL	0.021	BDL	0.091	BDL	0.2	BDL	71	41	BDL	BDL	0.0021	BDL
ENPR11MW	06/13/2013	300	300	BDL	BDL	BDL	0.089	BDL	BDL	BDL	72	32	BDL	BDL	BDL	BDL
ENPR11MW	08/30/2013	360	360	BDL	0.17	BDL	0.11	BDL	BDL	BDL	77	41	BDL	BDL	BDL	BDL
ENPR11MW	11/18/2013	740	740	BDL	0.13	BDL	0.1	BDL	BDL	BDL	80	34	BDL	BDL	BDL	BDL
ENPR11MW	03/19/2014	280	280	BDL	BDL	BDL	0.095	BDL	BDL	BDL	70	30	BDL	BDL	BDL	BDL
ENPR11MW	06/09/2014	280	280	BDL	BDL	BDL	0.091	BDL	BDL	BDL	71	28	BDL	BDL	BDL	BDL
ENPR11MW	09/18/2014	320	320	BDL	BDL	BDL	0.12	BDL	BDL	BDL	91	32	BDL	BDL	BDL	BDL
ENPR11MW	11/19/2014	330	330	BDL	BDL	BDL	0.11	BDL	BDL	0.0052	84	32	BDL	BDL	BDL	BDL
ENPR14MW	03/12/2013	1200	1200	BDL	0.2	BDL	0.042	BDL	BDL	BDL	85	50	BDL	BDL	BDL	BDL
ENPR14MW	06/13/2013	400	400	BDL	0.18	BDL	0.044	BDL	BDL	BDL	89	55	BDL	BDL	BDL	BDL
ENPR14MW	08/30/2013	360	360	BDL	0.19	BDL	0.041	BDL	BDL	BDL	84	58	BDL	BDL	BDL	BDL
ENPR14MW	11/18/2013	1400	1400	BDL	0.17	BDL	0.043	BDL	BDL	BDL	89	52	BDL	BDL	BDL	BDL
ENPR14MW	03/19/2014	340	340	BDL	BDL	BDL	0.043	BDL	BDL	BDL	83	47	BDL	BDL	BDL	BDL
ENPR14MW	06/09/2014	390	390	BDL	BDL	BDL	0.035	BDL	BDL	BDL	100	63	BDL	BDL	BDL	BDL
ENPR14MW	09/18/2014	390	390	BDL	BDL	BDL	0.052	BDL	BDL	BDL	110	65	BDL	BDL	BDL	BDL
ENPR14MW	11/19/2014	390	390	BDL	BDL	BDL	0.045	BDL	BDL	0.008	99	57	BDL	BDL	BDL	BDL
ENPR15MW	06/13/2013	360	360	BDL	0.13	BDL	0.067	BDL	BDL	BDL	92	74	BDL	BDL	BDL	BDL
ENPR15MW	08/30/2013	NA	NA	NA	NA	NA	NA	NA	NA	NA	NA	NA	NA	NA	NA	NA
ENPR15MW	03/19/2014	NA	NA	NA	NA	NA	NA	NA	NA	NA	NA	NA	NA	NA	NA	NA
ENPR15MW	06/09/2014	480	480	BDL	BDL	BDL	0.079	BDL	BDL	BDL	110	55	BDL	BDL	BDL	BDL
ENPR15MW	09/18/2014	380	380	BDL	BDL	BDL	0.078	BDL	BDL	BDL	110	59	BDL	BDL	BDL	BDL
ENPR15MW	11/19/2014	380	380	BDL	BDL	BDL	0.073	BDL	BDL	0.0073	94	52	BDL	BDL	BDL	BDL
ENPR16MW	06/13/2013	300	300	BDL	0.1	BDL	0.1	BDL	BDL	BDL	72	40	BDL	BDL	BDL	BDL
ENPR16MW	08/30/2013	290	290	BDL	0.2	BDL	0.11	BDL	BDL	BDL	68	32	BDL	BDL	BDL	BDL
ENPR16MW	03/19/2014	NA	NA	NA	NA	NA	NA	NA	NA	NA	NA	NA	NA	NA	NA	NA
ENPR16MW	06/09/2014	310	310	BDL	BDL	BDL	0.096	BDL	BDL	BDL	72	26	BDL	BDL	BDL	BDL
ENPR16MW	09/18/2014	310	310	BDL	BDL	BDL	0.1	BDL	BDL	BDL	83	25	BDL	BDL	BDL	BDL
ENPR16MW	11/19/2014	320	320	BDL	BDL	BDL	0.1	BDL	BDL	BDL	76	26	BDL	BDL	BDL	BDL

Middle Fork Water Facility
Water Sampling Data (2013-2014)
note: sampling data is repeated across multiple pages

Sample Location	Sample Date	Ethylene (mg/l)	Fluoride (mg/l)	Iron, Dissolved (mg/l)	Lead, Dissolved (mg/l)	Magnesium, Dissolved (mg/l)	Manganese, Dissolved (mg/l)	Methane (mg/l)	MTBE (mg/l)	Nitrate (mg/l)	Nitrite (mg/l)	PH (SU)	Potassium, Dissolved (mg/l)	Propane (mg/l)	Selenium, Dissolved (mg/l)	Silver, Dissolved (mg/l)	Sodium, Dissolved (mg/l)
ENPR3ST	03/12/2013	BDL	0.54	BDL	BDL	40	BDL	BDL	BDL	0.25	BDL	8.3	2.30	BDL	BDL	BDL	77
ENPR3ST	06/13/2013	BDL	0.56	BDL	BDL	42	BDL	BDL	BDL	0.36	BDL	8.2	2.80	BDL	0.022	BDL	84
ENPR3ST	08/30/2013	BDL	0.64	BDL	BDL	44	BDL	BDL	BDL	0.21	BDL	8.3	2.60	BDL	BDL	BDL	84
ENPR3ST	11/18/2013	BDL	0.64	BDL	BDL	45	BDL	BDL	BDL	0.42	BDL	8.2	2.50	BDL	BDL	BDL	80
ENPR3ST	03/19/2014	BDL	0.59	BDL	BDL	41	BDL	BDL	BDL	0.38	BDL	8.0	3.00	BDL	BDL	BDL	82
ENPR3ST	06/09/2014	BDL	0.54	BDL	BDL	45	BDL	BDL	BDL	0.54	BDL	8.0	2.70	BDL	BDL	BDL	83
ENPR3ST	09/18/2014	BDL	0.68	BDL	BDL	43	BDL	BDL	BDL	0.45	BDL	7.4	2.80	BDL	BDL	BDL	89
ENPR3ST	11/19/2014	BDL	0.62	BDL	0.017	43	BDL	BDL	BDL	0.49	BDL	7.7	2.30	BDL	BDL	BDL	83
ENPR11ST	03/12/2013	BDL	0.60	BDL	BDL	38	BDL	BDL	BDL	0.83	BDL	8.4	2.40	BDL	BDL	BDL	52
ENPR11ST	06/13/2013	BDL	0.56	BDL	BDL	35	BDL	BDL	BDL	0.94	BDL	8.4	2.30	BDL	BDL	BDL	47
ENPR11ST	08/30/2013	BDL	0.61	BDL	BDL	36	BDL	BDL	BDL	1.10	BDL	8.4	2.40	BDL	BDL	BDL	49
ENPR11ST	11/18/2013	BDL	0.59	BDL	BDL	38	BDL	BDL	BDL	0.78	BDL	8.6	2.20	BDL	BDL	BDL	47
ENPR11ST	03/19/2014	BDL	0.60	BDL	BDL	36	BDL	BDL	BDL	0.86	BDL	8.2	2.10	BDL	BDL	BDL	49
ENPR11ST	06/09/2014	BDL	0.49	BDL	BDL	36	BDL	BDL	BDL	2.70	BDL	8.3	2.40	BDL	BDL	BDL	43
ENPR11ST	09/18/2014	BDL	0.58	BDL	BDL	45	BDL	BDL	BDL	2.70	BDL	6.5	2.60	BDL	BDL	BDL	56
ENPR11ST	11/19/2014	BDL	0.68	BDL	0.011	44	BDL	BDL	BDL	1.10	BDL	8.1	2.80	BDL	BDL	BDL	62
ENPR 12ST	03/12/2013	BDL	0.77	BDL	BDL	59	BDL	BDL	BDL	1.80	BDL	8.5	3.50	BDL	BDL	BDL	85
ENPR 12ST	06/13/2013	BDL	0.68	BDL	0.0058	42	BDL	BDL	BDL	1.00	BDL	8.3	3.10	BDL	0.086	BDL	62
ENPR 12ST	08/30/2013	BDL	0.82	BDL	BDL	43	BDL	BDL	BDL	0.56	BDL	8.6	3.20	BDL	BDL	BDL	59
ENPR 12ST	11/18/2013	BDL	0.70	BDL	BDL	49	BDL	BDL	BDL	1.10	BDL	8.6	3.30	BDL	BDL	BDL	62
ENPR 12ST	03/19/2014	BDL	0.69	BDL	BDL	51	BDL	BDL	BDL	1.20	BDL	8.3	3.40	BDL	BDL	BDL	66
ENPR 12ST	06/09/2014	BDL	0.73	BDL	BDL	40	BDL	BDL	BDL	0.62	BDL	8.2	2.70	BDL	BDL	BDL	55
ENPR 12ST	09/18/2014	BDL	0.79	BDL	BDL	44	BDL	BDL	BDL	0.67	BDL	6.1	3.40	BDL	BDL	BDL	64
ENPR 12ST	11/19/2014	BDL	0.68	BDL	0.008	47	BDL	BDL	BDL	0.65	BDL	7.9	3.00	BDL	BDL	BDL	62
ENPR14ST	03/12/2013	BDL	0.55	BDL	BDL	35	BDL	BDL	BDL	0.62	BDL	7.9	2.70	BDL	BDL	BDL	47
ENPR14ST	06/13/2013	BDL	0.52	BDL	0.0071	35	BDL	BDL	BDL	0.89	BDL	8.1	2.40	BDL	0.052	BDL	44
ENPR14ST	08/30/2013	BDL	0.55	BDL	BDL	35	BDL	BDL	BDL	0.75	BDL	7.8	2.20	BDL	BDL	BDL	43
ENPR14ST	11/18/2013	BDL	0.58	BDL	BDL	36	BDL	BDL	BDL	0.75	BDL	8.2	1.90	BDL	BDL	BDL	63
ENPR14ST	03/19/2014	BDL	0.57	BDL	BDL	36	BDL	BDL	BDL	0.87	BDL	7.7	2.30	BDL	BDL	BDL	47
ENPR14ST	06/09/2014	BDL	0.50	BDL	BDL	42	BDL	BDL	BDL	2.90	BDL	8.0	2.30	BDL	BDL	BDL	43
ENPR14ST	09/18/2014	BDL	0.58	BDL	BDL	42	BDL	BDL	BDL	2.30	BDL	5.9	2.50	BDL	BDL	BDL	53
ENPR14ST	11/19/2014	BDL	0.56	BDL	0.0058	37	BDL	BDL	BDL	1.10	BDL	7.6	2.10	BDL	BDL	BDL	48
ENPR15ST	03/12/2013	BDL	0.65	BDL	BDL	37	BDL	BDL	BDL	0.73	BDL	8.5	2.20	BDL	BDL	BDL	51
ENPR15ST	06/13/2013	BDL	0.52	BDL	BDL	38	BDL	BDL	BDL	0.84	BDL	8.4	2.30	BDL	BDL	BDL	49
ENPR15ST	08/30/2013	BDL	0.65	BDL	BDL	37	BDL	BDL	BDL	1.10	BDL	8.4	2.30	BDL	0.021	BDL	47
ENPR15ST	11/18/2013	BDL	0.60	BDL	BDL	38	BDL	BDL	BDL	0.75	BDL	8.5	2.30	BDL	BDL	BDL	48
ENPR15ST	03/19/2014	BDL	0.61	BDL	BDL	36	BDL	BDL	BDL	0.82	BDL	8.1	2.10	BDL	BDL	BDL	49
ENPR15ST	06/09/2014	BDL	0.54	BDL	BDL	45	BDL	BDL	BDL	2.20	BDL	8.5	2.90	BDL	BDL	BDL	61
ENPR15ST	09/18/2014	BDL	0.70	BDL	BDL	45	BDL	BDL	BDL	1.50	BDL	7.6	3.00	BDL	BDL	BDL	64
ENPR15ST	11/19/2014	BDL	0.60	BDL	BDL	39	BDL	BDL	BDL	1.80	BDL	8.2	2.40	BDL	BDL	BDL	53
ENPR10MW	03/12/2013	BDL	0.69	BDL	BDL	49	0.016	0.0024	BDL	2.20	BDL	7.3	2.90		0.0079	BDL	68
ENPR10MW	06/13/2013	BDL	0.66	BDL	BDL	49	0.031	BDL	BDL	2.00	BDL	7.6	3.00	BDL	0.028	BDL	69
ENPR10MW	08/30/2013	BDL	0.67	BDL	BDL	25	BDL	BDL	BDL	2.30	BDL	7.5	1.80	BDL	BDL	BDL	35
ENPR10MW	11/18/2013	BDL	0.68	BDL	BDL	56	BDL	BDL	BDL	3.20	BDL	7.5	3.50	BDL	BDL	BDL	74
ENPR10MW	03/19/2014	BDL	0.71	BDL	BDL	53	0.077	BDL	BDL	3.00	BDL	7.3	3.20	BDL	BDL	BDL	69
ENPR10MW	06/09/2014	BDL	0.59	BDL	BDL	65	BDL	BDL	BDL	5.00	BDL	7.5	3.10	BDL	BDL	BDL	72
ENPR10MW	09/18/2014	BDL	0.70	BDL	BDL	63	BDL	BDL	BDL	4.20	BDL	6.4	3.60	BDL	BDL	BDL	84
ENPR10MW	11/19/2014	BDL	0.62	BDL	0.017	62	0.018	BDL	BDL	4.20	BDL	7.1	3.10	BDL	BDL	BDL	76
ENPR11MW	03/12/2013	BDL	0.62	BDL	BDL	42	BDL	0.0049	BDL	1.50	BDL	7.2	2.40		0.0064	BDL	57
ENPR11MW	06/13/2013	BDL	0.54	BDL	BDL	41	BDL	BDL	BDL	1.30	BDL	7.8	2.50	BDL	BDL	BDL	53
ENPR11MW	08/30/2013	BDL	0.65	BDL	BDL	45	BDL	BDL	BDL	1.60	BDL	7.7	2.60	BDL	BDL	BDL	58
ENPR11MW	11/18/2013	BDL	0.60	BDL	BDL	47	BDL	BDL	BDL	2.00	BDL	7.7	2.70	BDL	BDL	BDL	58
ENPR11MW	03/19/2014	BDL	0.59	BDL	BDL	43	BDL	BDL	BDL	2.10	BDL	7.4	2.60	BDL	BDL	BDL	55
ENPR11MW	06/09/2014	BDL	0.54	BDL	BDL	42	BDL	BDL	BDL	1.60	BDL	7.6	2.30	BDL	0.028	BDL	50
ENPR11MW	09/18/2014	BDL	0.57	BDL	BDL	50	BDL	BDL	BDL	2.90	BDL	6.4	2.90	BDL	BDL	BDL	66
ENPR11MW	11/19/2014	BDL	0.54	BDL	0.0057	52	BDL	BDL	BDL	3.00	BDL	7.1	2.70	BDL	0.027	BDL	64
ENPR14MW	03/12/2013	BDL	0.80	BDL	BDL	74	BDL	BDL	BDL	4.30	BDL	7.5	4.30	BDL	BDL	BDL	100
ENPR14MW	06/13/2013	BDL	0.76	BDL	BDL	78	BDL	BDL	BDL	4.20	BDL	8.3	4.20	BDL	BDL	BDL	110
ENPR14MW	08/30/2013	BDL	0.86	BDL	BDL	75	BDL	BDL	BDL	2.50	BDL	7.7	4.00	BDL	BDL	BDL	99
ENPR14MW	11/18/2013	BDL	0.79	BDL	BDL	80	BDL	BDL	BDL	3.30	BDL	7.5	4.30	BDL	BDL	BDL	100
ENPR14MW	03/19/2014	BDL	0.79	BDL	BDL	75	BDL	BDL	BDL	3.60	BDL	7.3	3.80	BDL	BDL	BDL	94
ENPR14MW	06/09/2014	BDL	0.82	BDL	BDL	90	BDL	BDL	BDL	5.20	BDL	7.5	4.20	BDL	0.033	BDL	110
ENPR14MW	09/18/2014	BDL	0.82	BDL	BDL	96	BDL	BDL	BDL	4.30	BDL	6.2	4.70	BDL	BDL	BDL	120
ENPR14MW	11/19/2014	BDL	0.73	BDL	0.018	93	BDL	BDL	BDL	5.00	BDL	7.4	4.00	BDL	BDL	BDL	110
ENPR15MW	06/13/2013	BDL	0.91	BDL	BDL	71	0.013	BDL	BDL	2.70	BDL	8.0	4.40	BDL	0.027	BDL	110
ENPR15MW	08/30/2013	NA	NA	NA	NA	NA	NA	NA	NA	NA	NA	NA	NA	NA	NA	NA	NA
ENPR15MW	03/19/2014	NA	NA	NA	NA	NA	NA	NA	NA	NA	NA	NA	NA	NA	NA	NA	NA
ENPR15MW	06/09/2014	BDL	0.70	BDL	BDL	84	BDL	BDL	BDL	1.40	BDL	7.4	4.00	BDL	0.025	BDL	99
ENPR15MW	09/18/2014	BDL	0.82	BDL	BDL	82	0.018	BDL	BDL	2.80	BDL	5.6	4.30	BDL	BDL	BDL	100
ENPR15MW	11/19/2014	BDL	0.74	BDL	0.014	79	0.033	BDL	BDL	3.90	BDL	7.3	3.70	BDL	BDL	BDL	95
ENPR16MW	06/13/2013	BDL	0.62	BDL	BDL	41	BDL	BDL	BDL	0.78	BDL	7.8	2.40	BDL	0.021	BDL	52
ENPR16MW	08/30/2013	BDL	0.64	BDL	BDL	42	0.36	BDL	BDL	0.90	BDL	7.6	2.90	BDL	BDL	BDL	50
ENPR16MW	03/19/2014	NA	NA	NA	NA	NA	NA	NA	NA	NA	NA	NA	NA	NA	NA	NA	NA
ENPR16MW	06/09/2014	BDL	0.48	BDL	BDL	43	BDL	BDL	BDL	1.20	BDL	7.6	2.20	BDL	BDL	BDL	52
ENPR16MW	09/18/2014	BDL	0.47	BDL	BDL	46	BDL	0.016	BDL	2.00	BDL	6.4	2.60	BDL	BDL	BDL	59
ENPR16MW	11/19/2014	BDL	0.46	BDL	0.012	47	BDL	BDL	BDL	2.00	BDL	7.4	2.30	BDL	BDL	BDL	56

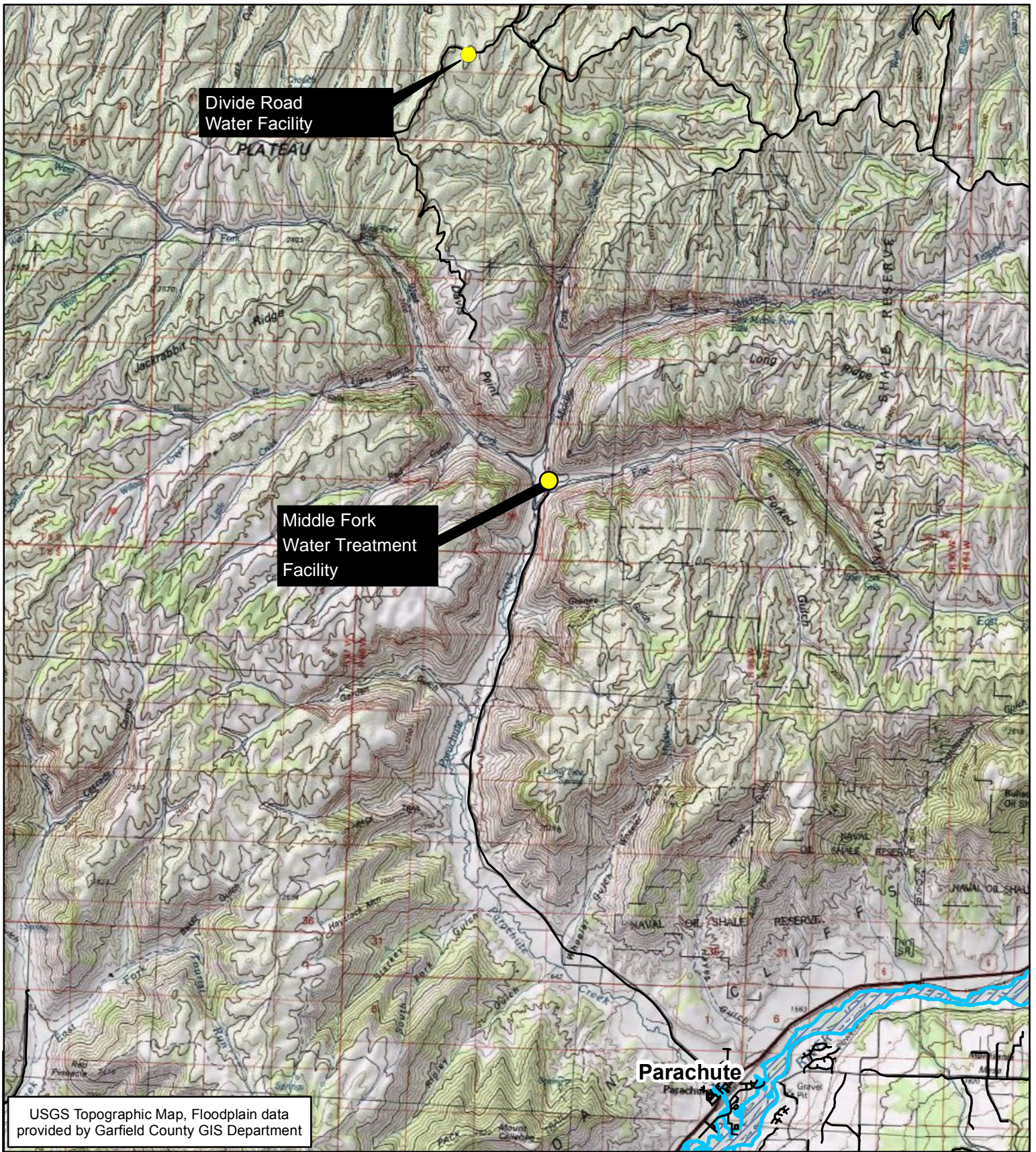
Middle Fork Water Facility

Water Sampling Data (2013-2014)

note: sampling data is repeated across multiple pages

Sample Location	Sample Date	Specific Conductivity (µMHOS/cm)	Sulfate (mg/l)	Sulfide (mg/l)	TDS (mg/l)	Toluene (mg/l)	Xylenes (mg/l)
ENPR3ST	03/12/2013	900	110	BDL	540	BDL	BDL
ENPR3ST	06/13/2013	950	110	BDL	560	BDL	BDL
ENPR3ST	08/30/2013	950	130	BDL	570	BDL	BDL
ENPR3ST	11/18/2013	1000	120	BDL	560	BDL	BDL
ENPR3ST	03/19/2014	840	120	BDL	530	BDL	BDL
ENPR3ST	06/09/2014	940	120	BDL	540	BDL	BDL
ENPR3ST	09/18/2014	900	110	BDL	540	BDL	BDL
ENPR3ST	11/19/2014	860	100	BDL	440	BDL	BDL
ENPR11ST	03/12/2013	770	99	BDL	480	BDL	BDL
ENPR11ST	06/13/2013	740	80	BDL	430	BDL	BDL
ENPR11ST	08/30/2013	760	81	BDL	460	BDL	BDL
ENPR11ST	11/18/2013	740	84	BDL	430	BDL	BDL
ENPR11ST	03/19/2014	690	100	BDL	430	BDL	BDL
ENPR11ST	06/09/2014	780	100	BDL	460	BDL	BDL
ENPR11ST	09/18/2014	810	110	BDL	510	BDL	BDL
ENPR11ST	11/19/2014	790	110	BDL	400	BDL	BDL
ENPR 12ST	03/12/2013	900	170	BDL	540	BDL	BDL
ENPR 12ST	06/13/2013	840	120	BDL	510	BDL	BDL
ENPR 12ST	08/30/2013	790	120	BDL	490	BDL	BDL
ENPR 12ST	11/18/2013	890	150	BDL	450	BDL	BDL
ENPR 12ST	03/19/2014	340	170	BDL	550	BDL	BDL
ENPR 12ST	06/09/2014	740	93	BDL	440	BDL	BDL
ENPR 12ST	09/18/2014	760	110	BDL	460	BDL	BDL
ENPR 12ST	11/19/2014	790	120	BDL	470	BDL	BDL
ENPR14ST	03/12/2013	720	72	BDL	410	BDL	BDL
ENPR14ST	06/13/2013	790	78	BDL	471	BDL	BDL
ENPR14ST	08/30/2013	720	64	BDL	410	BDL	BDL
ENPR14ST	11/18/2013	730	72	BDL	430	BDL	BDL
ENPR14ST	03/19/2014	720	83	BDL	450	BDL	BDL
ENPR14ST	06/09/2014	780	98	BDL	460	BDL	BDL
ENPR14ST	09/18/2014	790	92	BDL	500	BDL	BDL
ENPR14ST	11/19/2014	720	70	BDL	390	BDL	BDL
ENPR15ST	03/12/2013	750	81	BDL	440	BDL	BDL
ENPR15ST	06/13/2013	800	83	BDL	480	BDL	BDL
ENPR15ST	08/30/2013	730	84	BDL	440	BDL	BDL
ENPR15ST	11/18/2013	750	83	BDL	510	BDL	BDL
ENPR15ST	03/19/2014	720	100	BDL	400	BDL	BDL
ENPR15ST	06/09/2014	820	110	BDL	530	BDL	BDL
ENPR15ST	09/18/2014	800	110	BDL	490	BDL	BDL
ENPR15ST	11/19/2014	750	94	BDL	460	BDL	BDL
ENPR10MW	03/12/2013	910	150	BDL	560	BDL	BDL
ENPR10MW	06/13/2013	1000	140	BDL	600	BDL	BDL
ENPR10MW	08/30/2013	1000	140	BDL	620	BDL	BDL
ENPR10MW	11/18/2013	1100	170	BDL	660	BDL	BDL
ENPR10MW	03/19/2014	1000	160	BDL	650	BDL	BDL
ENPR10MW	06/09/2014	1100	200	BDL	870	BDL	BDL
ENPR10MW	09/18/2014	1100	190	BDL	720	BDL	BDL
ENPR10MW	11/19/2014	1100	200	BDL	700	BDL	BDL
ENPR11MW	03/12/2013	820	120	BDL	510	BDL	BDL
ENPR11MW	06/13/2013	880	100	BDL	570	BDL	BDL
ENPR11MW	08/30/2013	940	120	BDL	570	BDL	BDL
ENPR11MW	11/18/2013	960	120	BDL	620	BDL	BDL
ENPR11MW	03/19/2014	860	120	BDL	550	BDL	BDL
ENPR11MW	06/09/2014	810	93	BDL	500	BDL	BDL
ENPR11MW	09/18/2014	940	140	BDL	610	BDL	BDL
ENPR11MW	11/19/2014	990	150	BDL	630	BDL	BDL
ENPR14MW	03/12/2013	1300	260	BDL	900	BDL	BDL
ENPR14MW	06/13/2013	1400	290	BDL	1000	BDL	BDL
ENPR14MW	08/30/2013	1400	270	BDL	800	BDL	BDL
ENPR14MW	11/18/2013	1400	290	BDL	880	BDL	BDL
ENPR14MW	03/19/2014	1100	280	BDL	820	BDL	BDL
ENPR14MW	06/09/2014	1500	310	BDL	940	BDL	BDL
ENPR14MW	09/18/2014	1500	330	BDL	1000	BDL	BDL
ENPR14MW	11/19/2014	900	350	BDL	900	BDL	BDL
ENPR15MW	06/13/2013	1400	250	BDL	900	BDL	BDL
ENPR15MW	08/30/2013	NA	NA	NA	NA	NA	NA
ENPR15MW	03/19/2014	NA	NA	NA	NA	NA	NA
ENPR15MW	06/09/2014	1400	280	BDL	950	BDL	BDL
ENPR15MW	09/18/2014	1400	280	BDL	890	BDL	BDL
ENPR15MW	11/19/2014	1400	290	BDL	880	BDL	BDL
ENPR16MW	06/13/2013	890	93	BDL	550	BDL	BDL
ENPR16MW	08/30/2013	840	89	BDL	500	BDL	BDL
ENPR16MW	03/19/2014	NA	NA	NA	NA	NA	NA
ENPR16MW	06/09/2014	830	91	BDL	500	BDL	BDL
ENPR16MW	09/18/2014	860	110	BDL	540	BDL	BDL
ENPR16MW	11/19/2014	560	120	BDL	560	BDL	BDL

Appendix 5E: MFWF – Floodplain Map



Legend

- Water Facility
- Local Roads
- FloodPlain



PROJECT NO:	012-0400
DRAWN BY:	Jenna Muhlbach
DATE:	2/22/12

MIDDLE FORK WATER FACILITY FLOODPLAIN MAP GARFIELD COUNTY, COLORADO



826 21-1/2 ROAD
GRAND JUNCTION,
CO 81505
TEL 970.263.7800
FAX 970.263.7456

FIGURE

F - 1