



Kerr-McGee Oil & Gas Onshore LP

A subsidiary of Anadarko Petroleum Corporation

1099 18th Street
Denver, CO 80202
720-929-6000

February 23, 2015

Matt Lepore
Director, Colorado Oil and Gas Conservation Commission
Department of Natural Resources
The Chancery Building
1120 Lincoln Street, Suite 801
Denver, CO 80203

Re: **30 Day Certification Letter - 318A.e**
ENCORE 1C-12HZ (Doc No. 400765756)
Township 5 North, Range 68 West
Section 12: NWNW
Unit Acreage: 240 acres
Unit Spacing: 05N-68W-Sec 12 N2N2
05N-68W-Sec 11 NENE
05N-67W-Sec 07 NWNW
Larimer County, Colorado

Dear Director Lepore:

Kerr-McGee Oil and Gas Onshore LP ("KMG") hereby certifies that a thirty (30) day notice has been given by certified mail to all mineral owners in the proposed wellbore spacing unit. We have not received any objections to such well location, proposed spacing unit, or additional producing formation. KMG hereby respectfully requests approval of this boundary well.

If you have any questions or issues regarding this permit, please contact Cheryl Light at (720) 929-6461.

Sincerely,

Kerr-McGee Oil and Gas Onshore LP

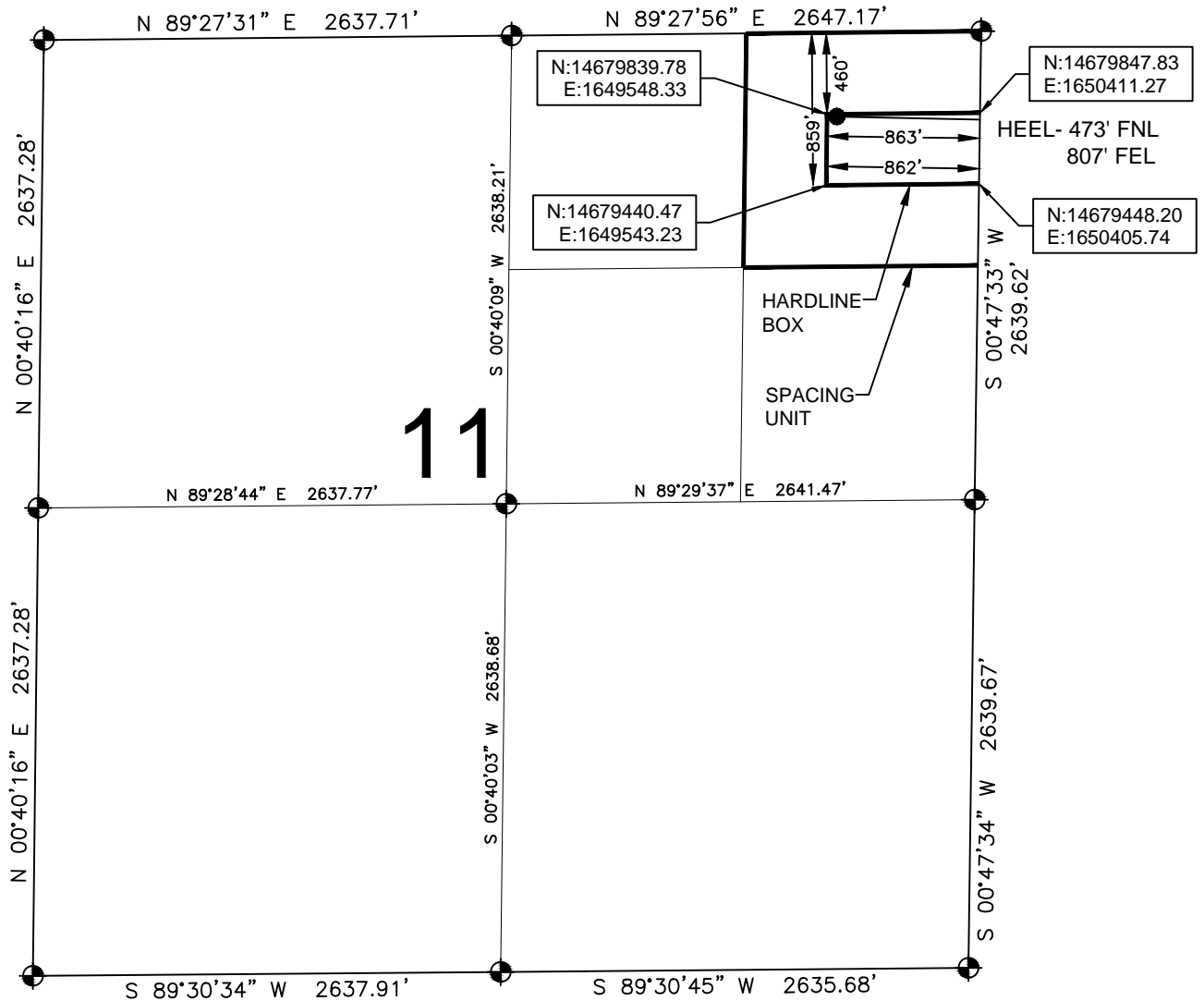
A handwritten signature in blue ink that reads 'RPowers'.

Ronett Powers
Regulatory Analyst II

Enclosure

HARDLINE EXHIBIT: ENCORE 1C-12HZ

SECTION 11, TOWNSHIP 5 NORTH, RANGE 68 WEST, 6TH P.M.



LEGEND

- = EXISTING MONUMENT ● = BOTTOM HOLE
● = PROPOSED HEEL BH = BOTTOM HOLE

HEEL LOCATION

UTM 13
LATITUDE= 40.420405°
LONGITUDE= 104.966991°

LATITUDE= 40°25'13.459"
LONGITUDE= 104°58'01.168"

BOTTOM HOLE LOCATION

NAD83
LATITUDE= 40.420037°
LONGITUDE= 104.944530°

LATITUDE= 40°25'12.133"
LONGITUDE= 104°56'40.307"

QRT/QRT SECTIONS WITHIN PATH OF THE HARDLINE.

NENE, SEC. 11

AVAILABLE FOOTAGE

7080'

NOTES:

1. THIS DOCUMENT IS NOT A LAND SURVEY PLAT OR IMPROVEMENT SURVEY PLAT. THIS DOCUMENT DOES NOT REFLECT A FIELD SURVEY. SECTION BREAKDOWN, MONUMENTATION AND HORIZONTAL POSITIONS SHOWN ARE BASED ON THE HEEL AND BOTTOM HOLE LOCATION PROVIDED BY ANADARKO PETROLEUM CORPORATION

SECTION 12, TOWNSHIP 5 NORTH, RANGE 68 WEST, 6TH P.M.



QRT/QRT SECTIONS WITHIN PATH OF THE HARDLINE.

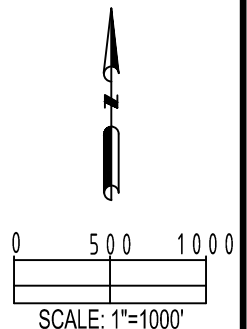
NOTES:

PREPARED BY:

PFS  Petroleum Field Services, LLC
1801 W. 13th Ave.
Denver, CO 80204

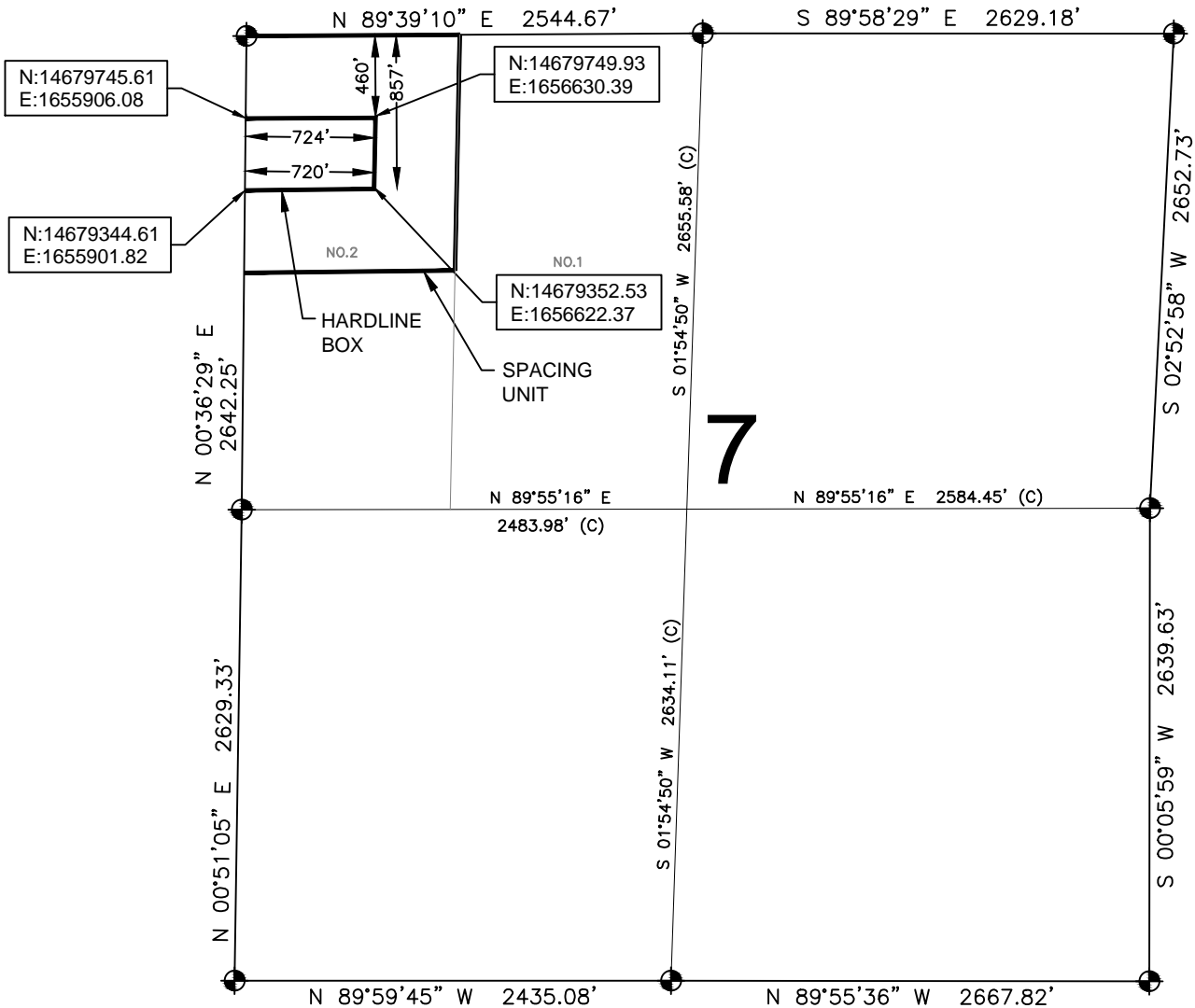
SHEET 2 OF 3

DRAWING DATE: 12-22-14		HEEL LOCATION: NE 1/4, NE 1/4, SEC. 11, T5N, R68W, 6TH P.M. LARIMER COUNTY, COLORADO
BY: SMF	CHECKED: MDCL	



HARDLINE EXHIBIT: ENCORE 1C-12HZ

SECTION 7, TOWNSHIP 5 NORTH, RANGE 67 WEST, 6TH P.M.



LEGEND

- = EXISTING MONUMENT ● = BOTTOM HOLE
● = PROPOSED HEEL BH = BOTTOM HOLE

QRT/QRT SECTIONS WITHIN PATH OF THE HARDLINE.

N2 LOT 2, NW4, SEC. 7



NOTES:

- THIS DOCUMENT IS NOT A LAND SURVEY PLAT OR IMPROVEMENT SURVEY PLAT. THIS DOCUMENT DOES NOT REFLECT A FIELD SURVEY. SECTION BREAKDOWN, MONUMENTATION AND HORIZONTAL POSITIONS SHOWN ARE BASED ON THE HEEL AND BOTTOM HOLE LOCATION PROVIDED BY ANADARKO PETROLEUM CORPORATION

