



# Kerr-McGee Oil & Gas Onshore LP

A subsidiary of Anadarko Petroleum Corporation

1099 18<sup>th</sup> Street  
Denver, CO 80202  
720-929-6000

February 23, 2015

Matt Lepore  
Director, Colorado Oil and Gas Conservation Commission  
Department of Natural Resources  
The Chancery Building  
1120 Lincoln Street, Suite 801  
Denver, CO 80203

Re: **30 Day Certification Letter - 318A.e**  
ENCORE 41N-12HZ (Doc No. 400765755)  
Township 5 North, Range 68 West  
Section 12: NWNW  
Unit Acreage: 480 acres  
Unit Spacing: 05N-68W-Sec 12 N2  
05N-68W-Sec 11 E2NE  
05N-67W-Sec 07 W2NW  
Larimer County, Colorado

Dear Director Lepore:

Kerr-McGee Oil and Gas Onshore LP ("KMG") hereby certifies that a thirty (30) day notice has been given by certified mail to all mineral owners in the proposed wellbore spacing unit. We have not received any objections to such well location, proposed spacing unit, or additional producing formation. KMG hereby respectfully requests approval of this boundary well.

If you have any questions or issues regarding this permit, please contact Cheryl Light at (720) 929-6461.

Sincerely,

**Kerr-McGee Oil and Gas Onshore LP**




A handwritten signature in blue ink that reads 'RPowers'.

Ronett Powers  
Regulatory Analyst II

Enclosure

SECTION 11, TOWNSHIP 5 NORTH, RANGE 68 WEST, 6TH P.M.



-  = EXISTING MONUMENT      = BOTTOM HOLE  
 = PROPOSED HEEL     BH = BOTTOM HOLE

UTM 13  
LATITUDE= 40.418689°  
LONGITUDE= 104.967005°

LATITUDE= 40°25'07.280"  
LONGITUDE= 104°58'01.218"

NAD83  
LATITUDE= 40.418623°  
LONGITUDE= 104.944551°

LATITUDE= 40°25'07.044"  
LONGITUDE= 104°56'40.382"

NENE, SEC. 11                      SENE, SEC. 11

## 7073'

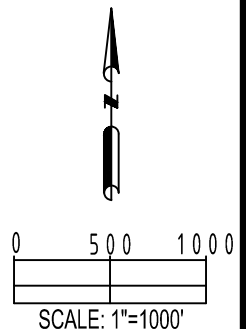
1. THIS DOCUMENT IS NOT A LAND SURVEY PLAT OR IMPROVEMENT SURVEY PLAT. THIS DOCUMENT DOES NOT REFLECT A FIELD SURVEY. SECTION BREAKDOWN, MONUMENTATION AND HORIZONTAL POSITIONS SHOWN ARE BASED ON THE HEEL AND BOTTOM HOLE LOCATION PROVIDED BY ANADARKO PETROLEUM CORPORATION

PREPARED BY:

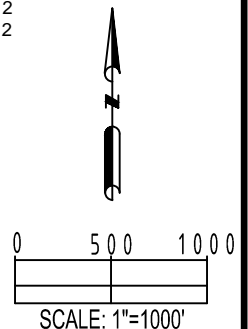
**PFS**  **It.**  
Petroleum Field Services, LLC  
1801 W. 13th Ave.  
Denver, CO 80204

SHEET 1 OF 3

DRAWING DATE: 12-22-14		HEEL LOCATION: NE 1/4, NE 1/4, SEC. 11, T5N, R68W, 6TH P.M. LARIMER COUNTY, COLORADO
BY: SMF	CHECKED: MDCL	

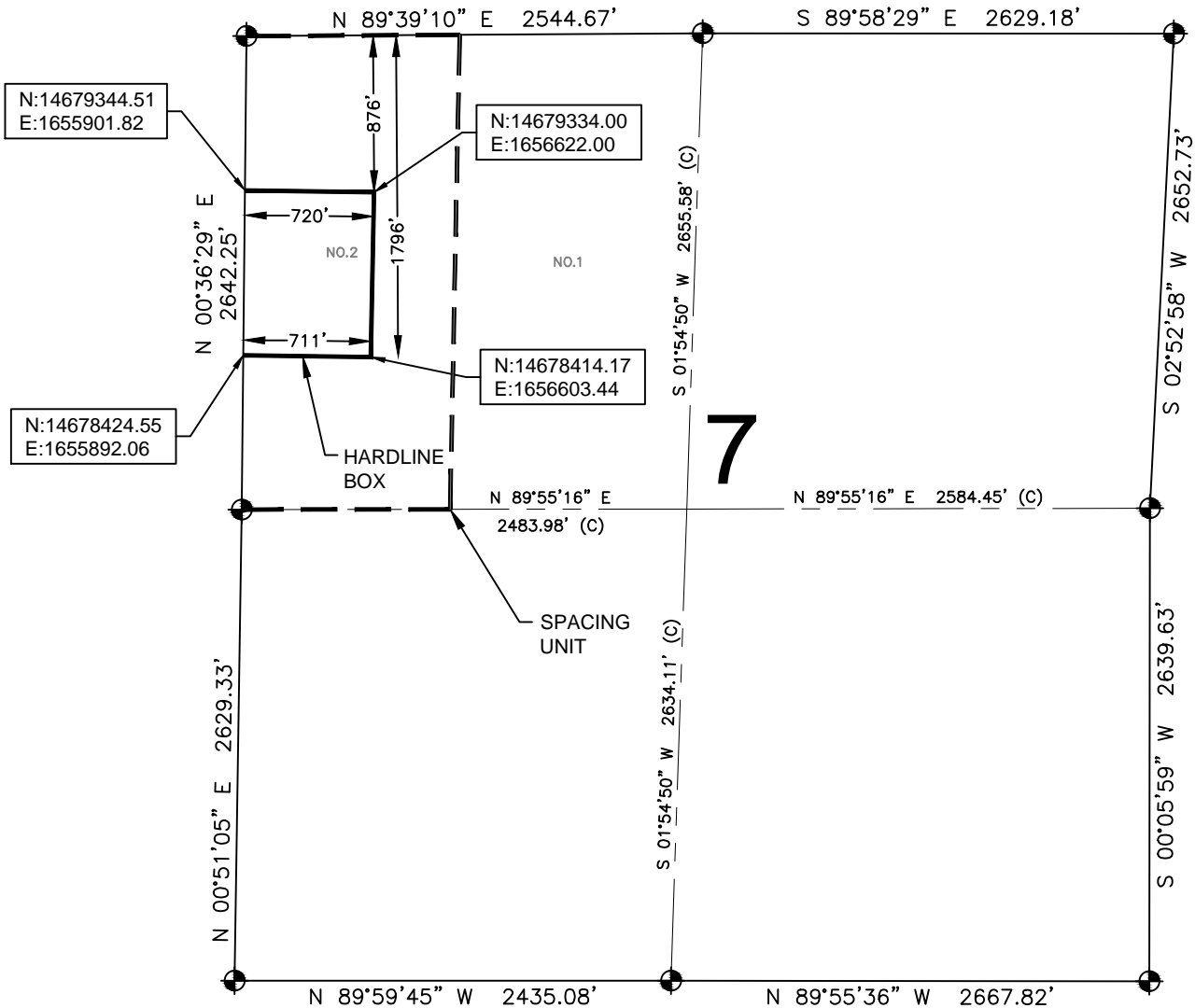


SECTION 12, TOWNSHIP 5 NORTH, RANGE 68 WEST, 6TH P.M.



# HARDLINE EXHIBIT: ENCORE 41N-12HZ

SECTION 7, TOWNSHIP 5 NORTH, RANGE 67 WEST, 6TH P.M.



## LEGEND

- = EXISTING MONUMENT    ● = BOTTOM HOLE  
● = PROPOSED HEEL    BH = BOTTOM HOLE

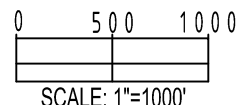
## QRT/QRT SECTIONS WITHIN PATH OF THE HARDLINE.

LOT 2, NW4, SEC. 7



## NOTES:

- THIS DOCUMENT IS NOT A LAND SURVEY PLAT OR IMPROVEMENT SURVEY PLAT. THIS DOCUMENT DOES NOT REFLECT A FIELD SURVEY. SECTION BREAKDOWN, MONUMENTATION AND HORIZONTAL POSITIONS SHOWN ARE BASED ON THE HEEL AND BOTTOM HOLE LOCATION PROVIDED BY ANADARKO PETROLEUM CORPORATION



SCALE: 1"=1000'