



RADIAL CEMENT BOND LOG
GAMMA RAY
CCL

Company		Kerr McGee Oil & Gas							
Well		SACK ALBERT UNIT 1							
Field		Wattenberg							
County		WELD							
State		CO							
Location:		API # : 05-123-07902							
Other Services									
SEC		NA	TWP	NA	RGE	NA	Elevation	NA	KB, NA D.F. NA G.L. NA
Permanent Datum		GL							
Log Measured From		KB							
Drilling Measured From		KB							
Date		2-21-2014							
Run Number		ONE							
Depth Driller		NA							
Depth Logger		7450							
Bottom Logged Interval		7450							
Top Log Interval		6590							
Open Hole Size		4.5							
Type Fluid		WATER							
Density / Viscosity		1.0							
Max. Recorded Temp.		NA							
Estimated Cement Top		6780							
Time Well Ready		NA							
Time Logger on Bottom		NA							
Equipment Number		7770							
Location		GREELEY							
Recorded By		C.JONES							
Witnessed By		AMORALES							
Borehole Record		Tubing Record							
Run Number		Bit	From	To	Size	Weight	From	To	
ONE									
TWO									
Casing Record		Size		Wgt/Ft		Top		Bottom	
Surface String									
Prot. String									
Production String									
Liner									

<<< Fold Here >>>

All interpretations are opinions based on inferences from electrical or other measurements and we cannot and do not guarantee the accuracy or correctness of any interpretation, and we shall not, except in the case of gross or willful negligence on our part, be liable or responsible for any loss, costs, damages, or expenses incurred or sustained by anyone resulting from any interpretation made by any of our officers, agents or employees. These interpretations are also subject to our general terms and conditions set out in our current Price Schedule.

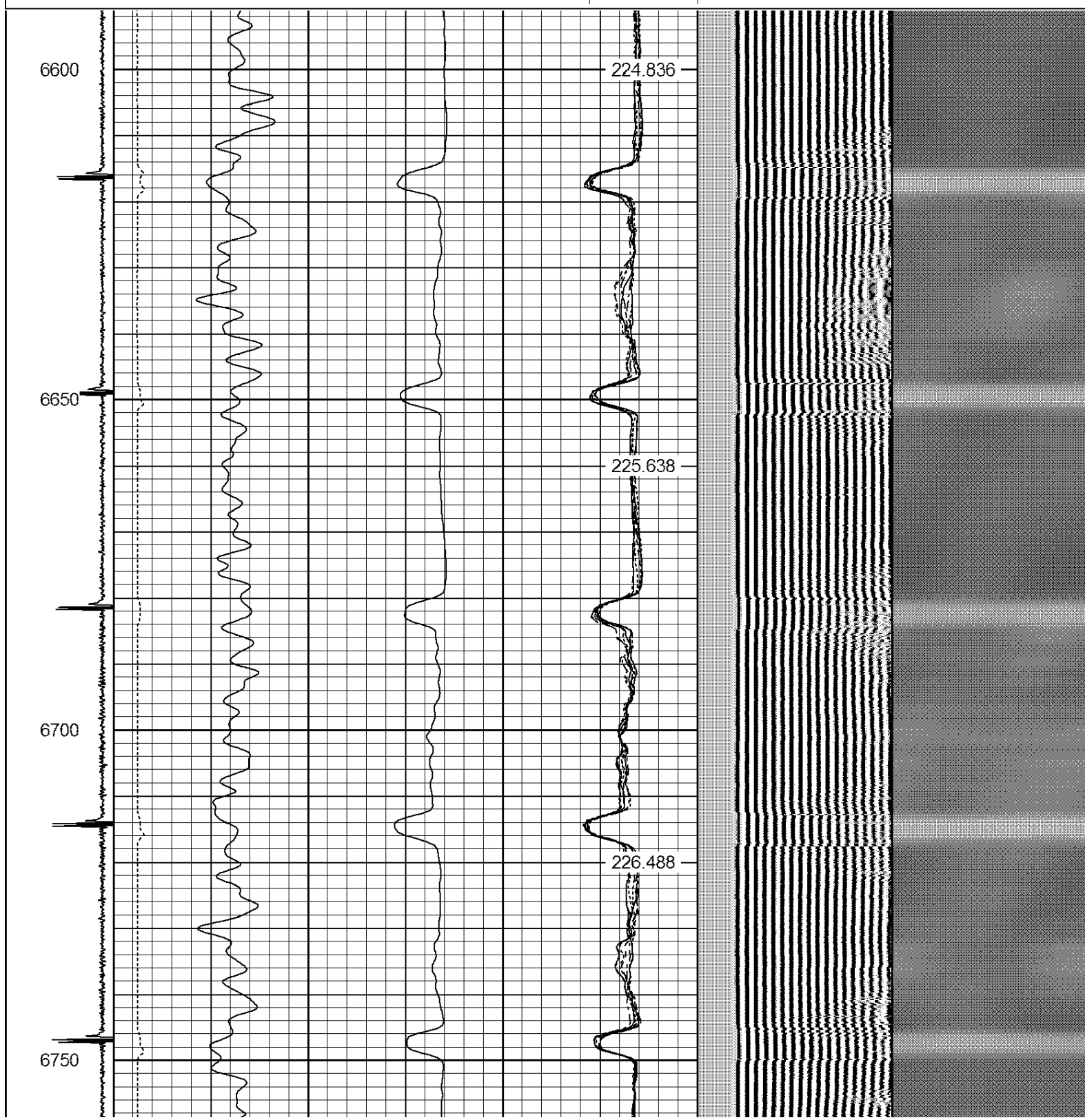
Comments

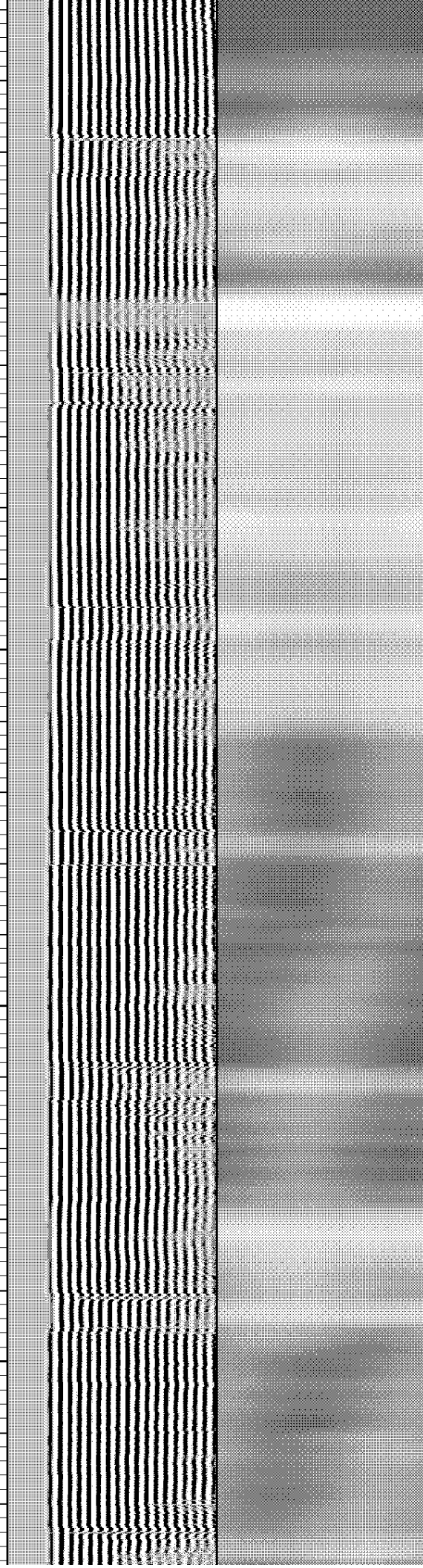
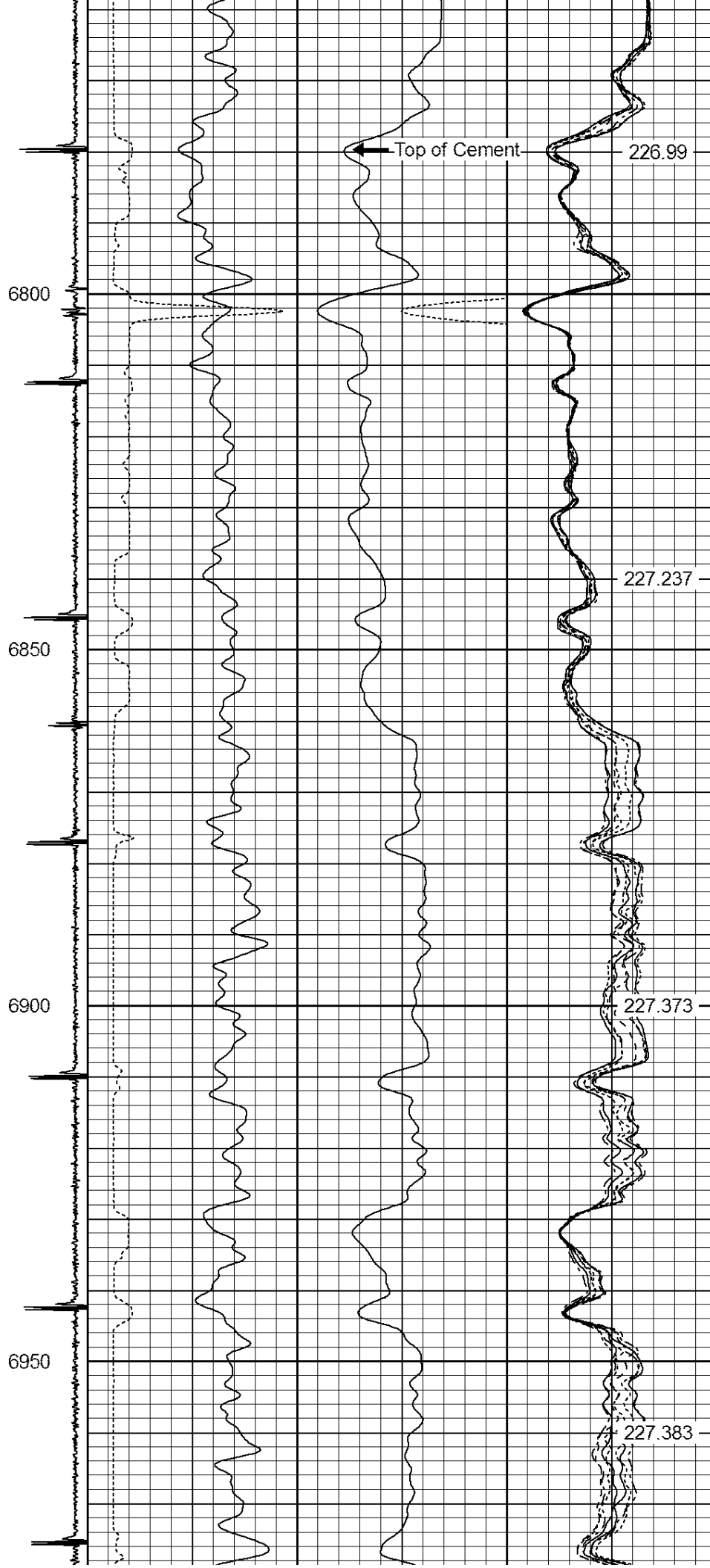
RAN CBL TO VERIFY CEMENT.
TIED INTO SQ.HOLES @ 6800' & 7350'

THANK YOU FOR USING WARRIOR ENERGY!!!!

Sensor	Offset (ft)	Schematic	Description	Len (ft)	OD (in)	Wt (lb)

-9	CCL	1	200	TT (usec)	800	0	AMP (mV)	100	0	AMPS1	100	200	VDL	1200	1	Cement Map	8
LSPD			0	GR (GAPI)	200	0	AMPx5 (mV)	20	0	AMPS2	100				1		100
(ft/min)			200	GR (GAPI)	400				0	AMPS4	100						
0		250							0	AMPS5	100						
									0	AMPS6	100						
									0	AMPS7	100						
									0	AMPS8	100						
										IntTemp							
										(degF)							





7000

7050

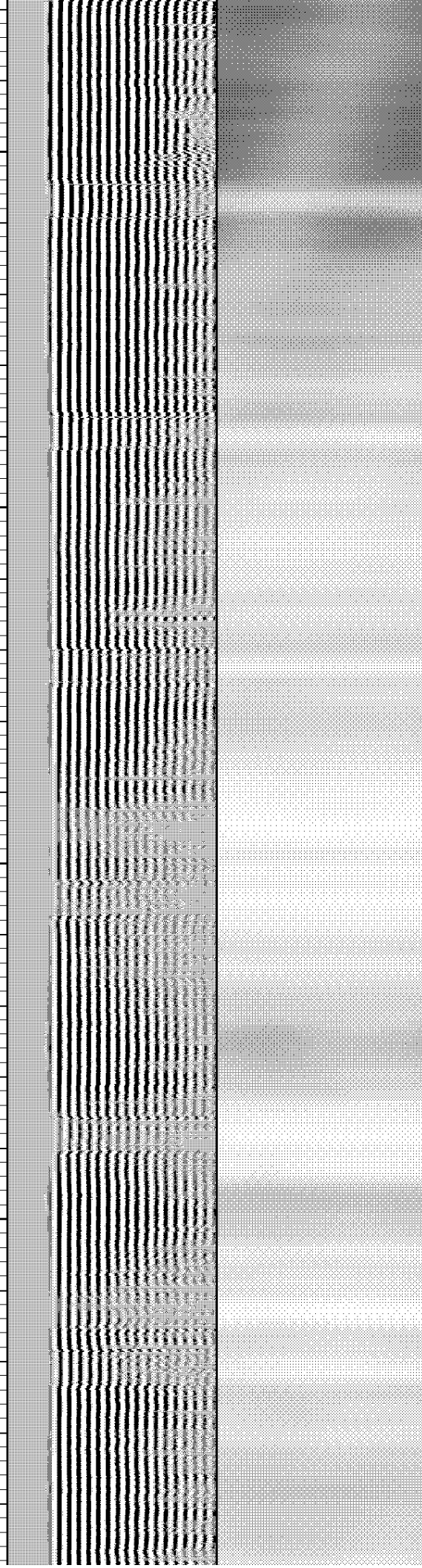
7100

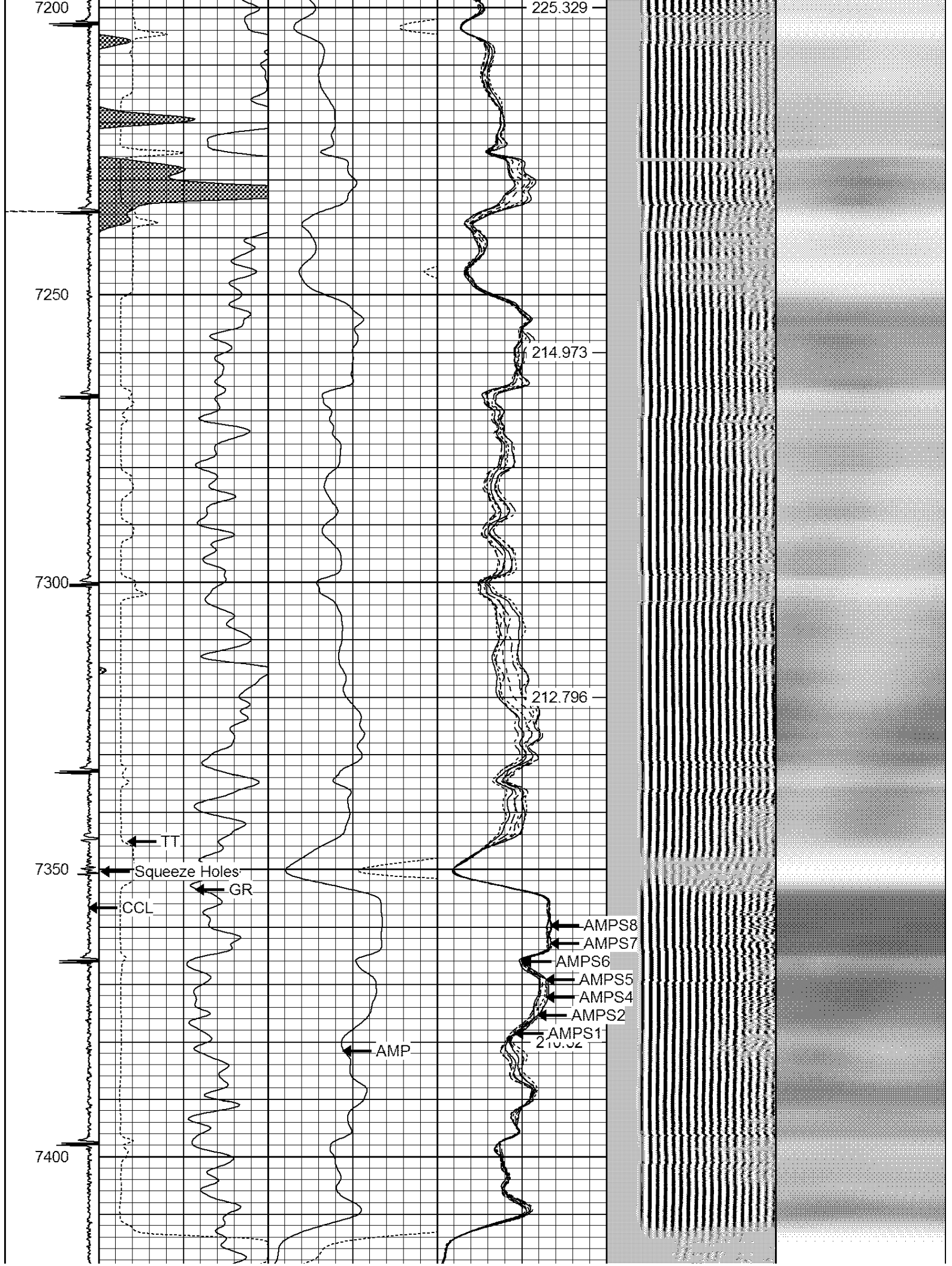
7150

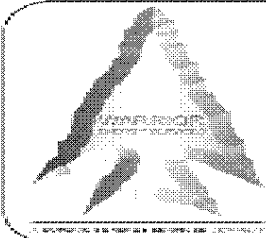
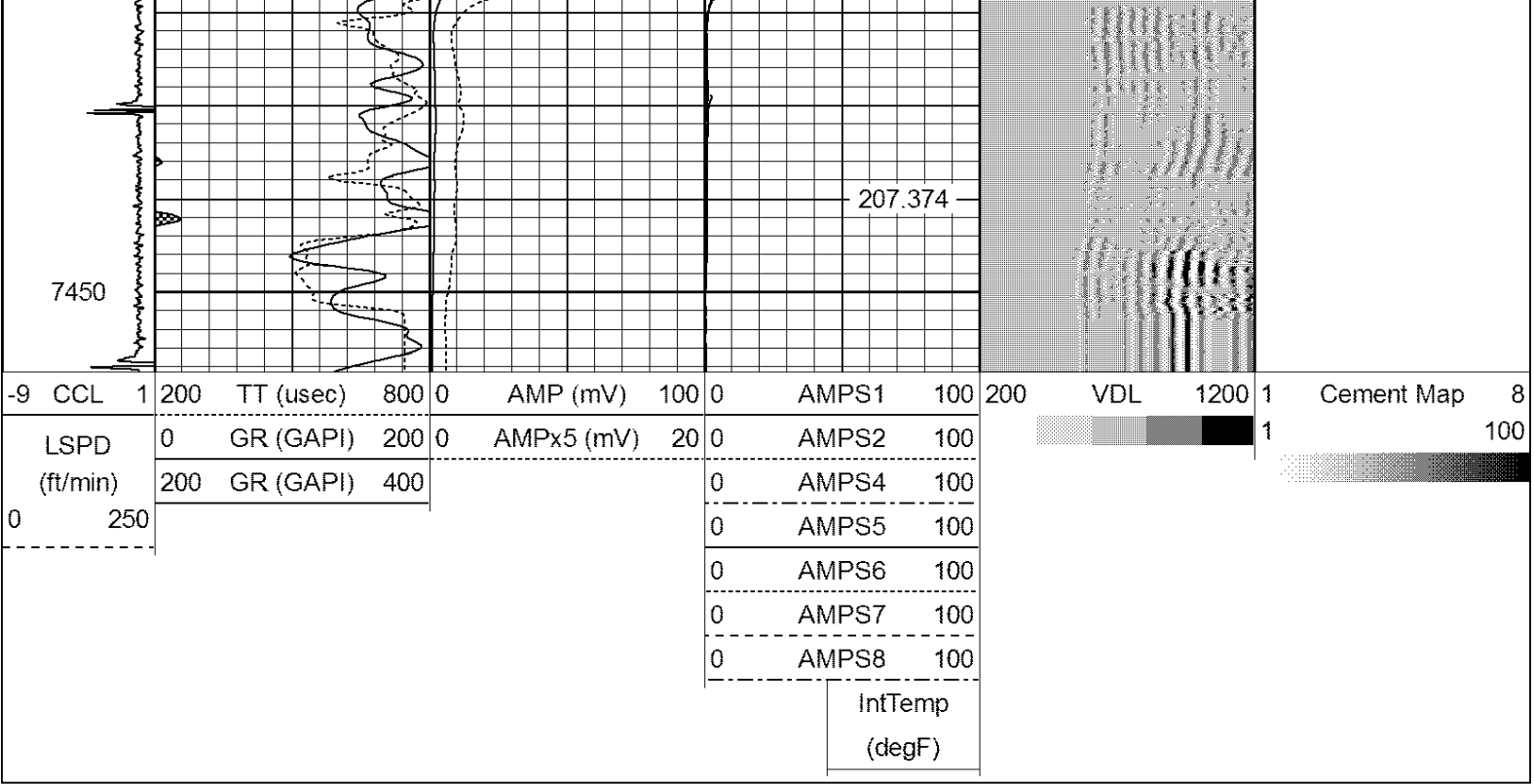
227.167

226.85

226.238







WARRIOR
ENERGY SERVICES

Company Kerr McGee Oil and Gas
Well Sacks Albert Unit 1
Field WATTENBERG
County WELD
State CO