

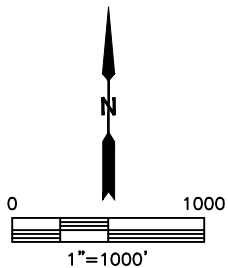
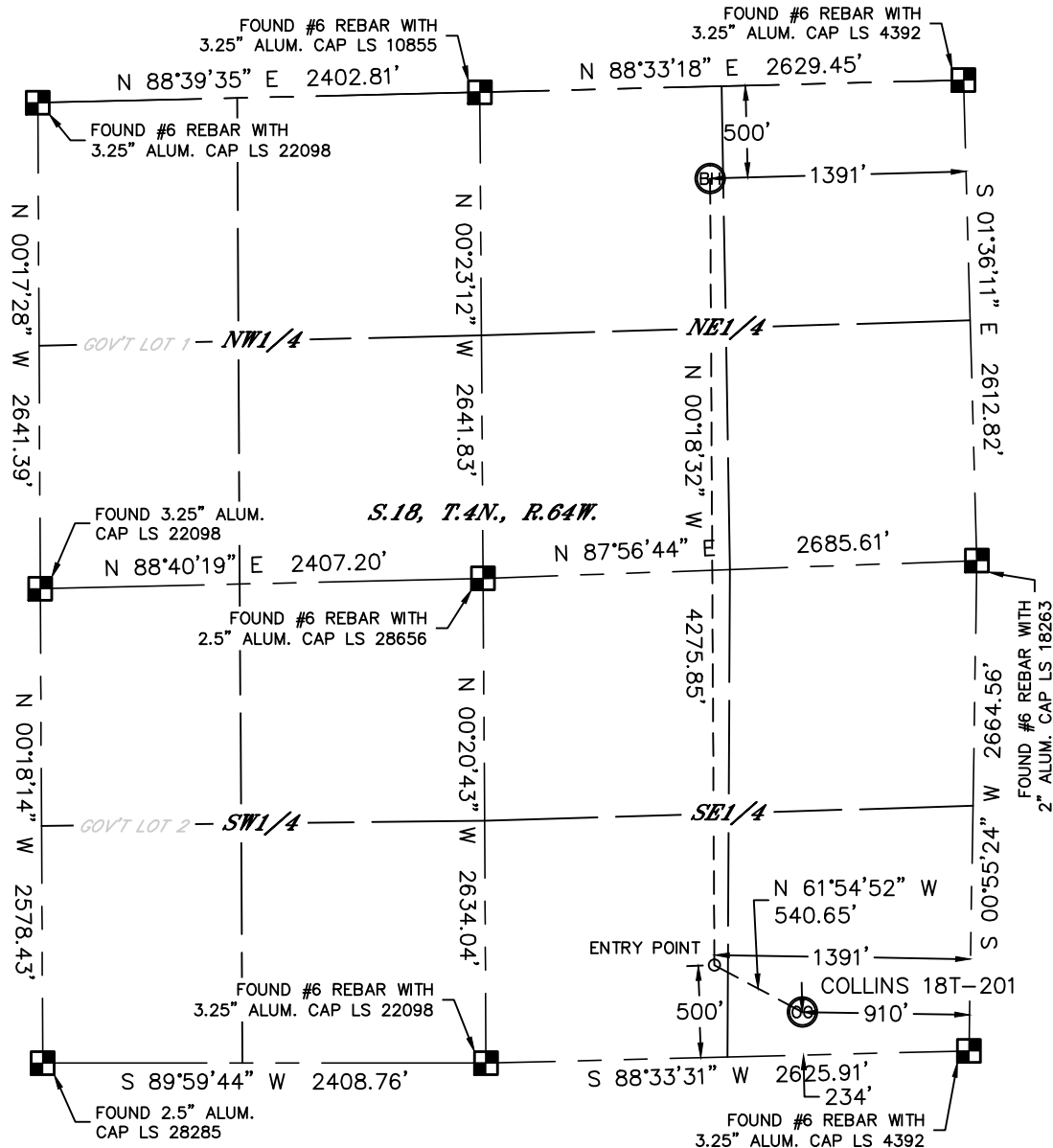


Lat40°, Inc. 1635 Foxtrail Drive, Suite 325 Loveland, CO 970-776-3321

# WELL LOCATION CERTIFICATE

THIS MAP DOES NOT REPRESENT A BOUNDARY SURVEY

SECTION: 18  
TOWNSHIP: 4N  
RANGE: 64W



In accordance with a request from Steve Tracy with PDC ENERGY Lat40°, Inc. has determined the surface location of the COLLINS 18T-201 to be 234' from the SOUTH line and 910' from the EAST line and the bottom hole to be 500' from the NORTH line and 1391' from the EAST line as measured at right angles from the section lines of Section 18, Township 4 North, Range 64 West of the Sixth Principal Meridian, County of Weld, State of Colorado.

I hereby state that this Well Location Certificate was prepared by me, or under my direct supervision, that the fieldwork was completed on 8/20/2014, for and on behalf of PDC ENERGY. That this is not a Land Survey Plat or an Improvement Survey Plat, and that it is not to be relied upon for establishment of fence, building, or other future improvement lines.

#### SURFACE LOCATION

LAT: 40.30575°N  
LONG: 104.58734°W  
PDOP: 1.6  
ELEV: 4782'  
1/4,1/4: SESE

#### BOTTOM HOLE

LAT: 40.31819°N  
LONG: 104.58896°W

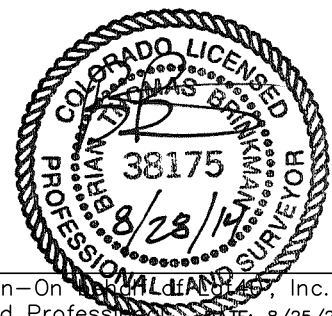
#### ENTRY POINT

LAT: 40.30646°N  
LONG: 104.58904°W

#### LEGEND

- = ALIQUOT MONUMENT AS DESCRIBED
- = CALCULATED POSITION

Brian T. Brinkman—On behalf of Lat40°, Inc.  
Colorado Licensed Professional Land Surveyor No. 38175  
DATE: 8/25/2014  
PROJECT#: 2014149



- NOTE:
- 1) Bearings shown are Grid Bearings of the Colorado State Plane Coordinate System, North Zone, North American Datum 1983. The lined dimensions as contained herein are based upon the "U.S. Survey Foot."
  - 2) Ground elevations are based on an observed GPS elevation (NAVD 1988 DATUM).
  - 3) IMPROVEMENTS: See LOCATION DRAWING for all visible improvements within 500' of disturbed area.
  - 4) SURFACE USE: CROP LAND
  - 5) INSTRUMENT OPERATOR: WYATT HALL
  - 6) NEAREST CULTURAL ITEMS:  
BUILDING: ±473' SE  
BUILDING UNIT: ±1010' NE  
HIGH OCCUPANCY BUILDING UNIT: +5280'  
DESIGNATED OUTSIDE ACTIVITY AREA: +5280'  
PUBLIC ROAD: ±223' S (CR 44)  
ABOVEGROUND UTILITY: ±201' S  
RAILROAD: +5280'  
PROPERTY LINE: ±234' S

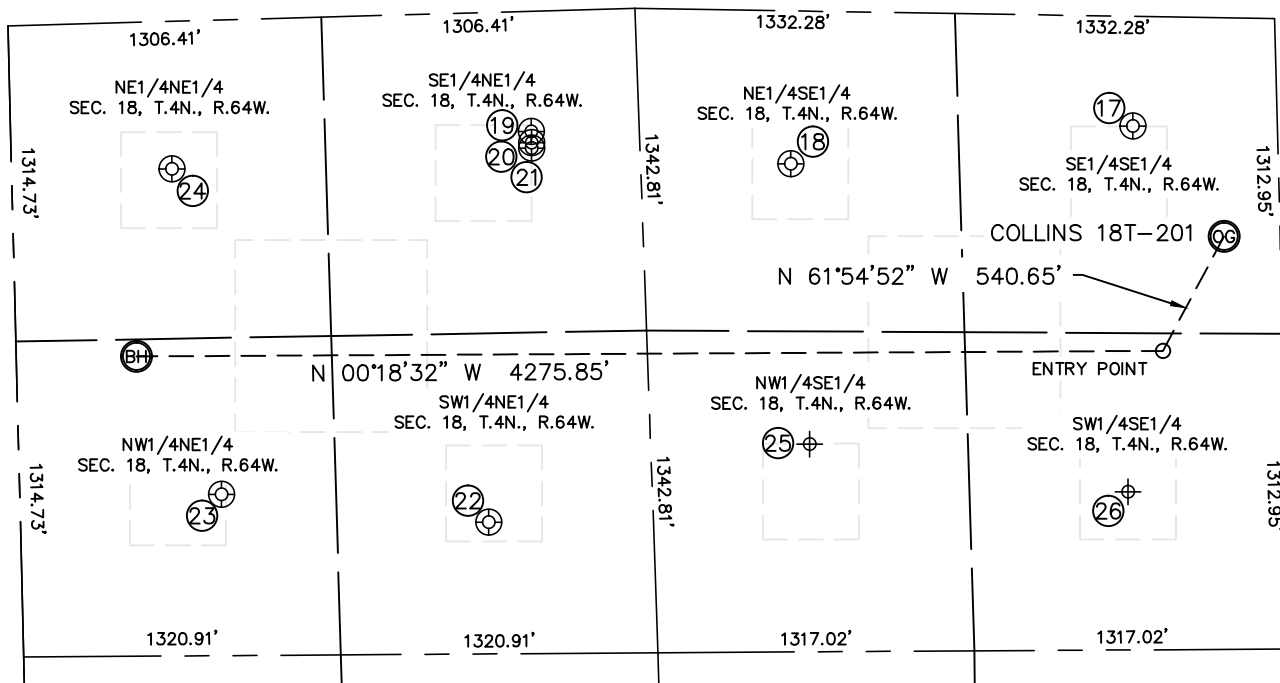


Lat40°, Inc. 1635 Foxtrail Drive, Suite 325 Loveland, CO 970-776-3321

# SITE SKETCH

COLLINS 18T-201

SECTION: 18  
TOWNSHIP: 4N  
RANGE: 64W



WELL NO.	WELL NAME	SHL FOOTAGE				SHL LAT°	SHL LONG°	PDOP	ELEV (FT.)	1/4/1/4
17	RITER 'C' 18-16	602	FSL	457	FEL	40.30678	-104.58568	1.9	4768	SESE
18	SCHNEIDER 43-18	2030	FSL	636	FEL	40.31069	-104.58619	1.7	4773	NESE
19	FRICK C 18-8	2168	FNL	500	FEL	40.31365	-104.58566	1.6	4757	SENE
20	FRICK PC C 17-65HN	2168	FNL	547	FEL	40.31365	-104.58583	1.7	4758	SENE
21	FRICK C 17-79HN	2167	FNL	569	FEL	40.31365	-104.58591	1.8	4759	SENE
22	FRICK 32-18	1949	FNL	2122	FEL	40.31419	-104.59149	1.6	4802	SWNE
23	FRICK C 18-2	839	FNL	1975	FEL	40.31724	-104.59104	1.8	4801	NWNE
24	MARY MILLS 41-18	667	FNL	614	FEL	40.31777	-104.58617	2.3	4783	NENE
25	RITER C 18-10	1981	FSL	1803	FEL	40.31065	-104.59044	NA	4805	NWSE
26	SCHNEIDER/DIC/COLTON 34-18	660	FSL	1980	FEL	40.30684	-104.59121	NA	4801	SWSE

NOTE: THE ABANDONED WELL DATA SHOWN IN RED ABOVE WAS OBTAINED FROM COGCC SCOUT CARDS.



DATE: 8/25/2014  
PROJECT#: 2014149