

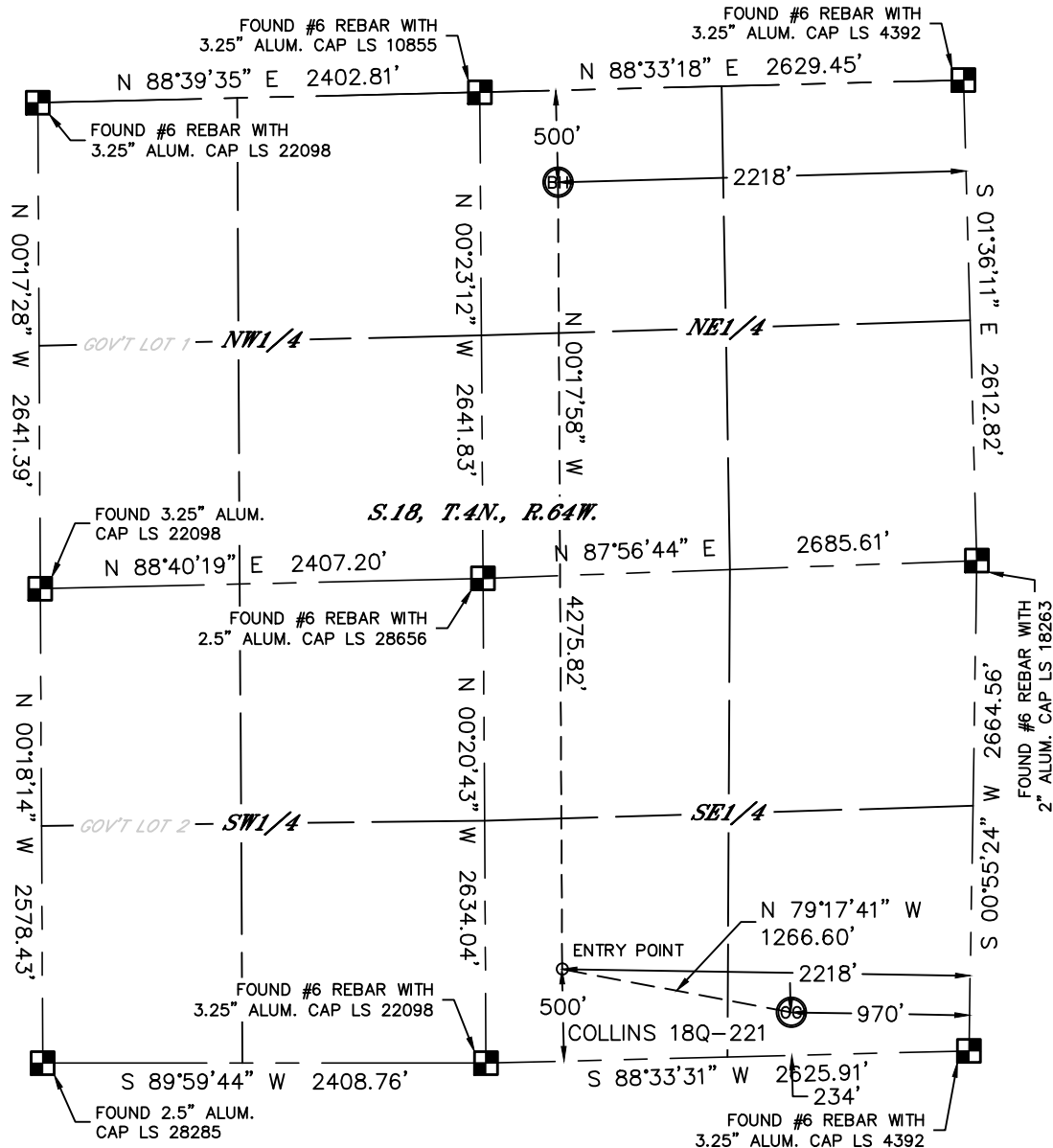


Lat40°, Inc. 1635 Foxtrail Drive, Suite 325 Loveland, CO 970-776-3321

WELL LOCATION CERTIFICATE

THIS MAP DOES NOT REPRESENT A BOUNDARY SURVEY

SECTION: 18
TOWNSHIP: 4N
RANGE: 64W



In accordance with a request from Steve Tracy with PDC ENERGY Lat40°, Inc. has determined the surface location of the COLLINS 18Q-221 to be 234' from the SOUTH line and 970' from the EAST line and the bottom hole to be 500' from the NORTH line and 2218' from the EAST line as measured at right angles from the section lines of Section 18, Township 4 North, Range 64 West of the Sixth Principal Meridian, County of Weld, State of Colorado.

I hereby state that this Well Location Certificate was prepared by me, or under my direct supervision, that the fieldwork was completed on 8/20/2014, for and on behalf of PDC ENERGY. That this is not a Land Survey Plat or an Improvement Survey Plat, and that it is not to be relied upon for establishment of fence, building, or other future improvement lines.

SURFACE LOCATION

LAT: 40.30574°N
LONG: 104.58755°W
PDOP: 1.6
ELEV: 4783'
1/4,1/4: SESE

BOTTOM HOLE

LAT: 40.31816°N
LONG: 104.59193°W

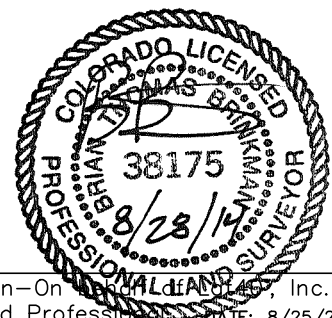
ENTRY POINT

LAT: 40.30643°N
LONG: 104.59200°W

LEGEND

- = ALIQUOT MONUMENT AS DESCRIBED
- = CALCULATED POSITION

Brian T. Brinkman—On behalf of Lat40°, Inc.
Colorado Licensed Professional Land Surveyor No. 38175
DATE: 8/25/2014
PROJECT#: 2014149



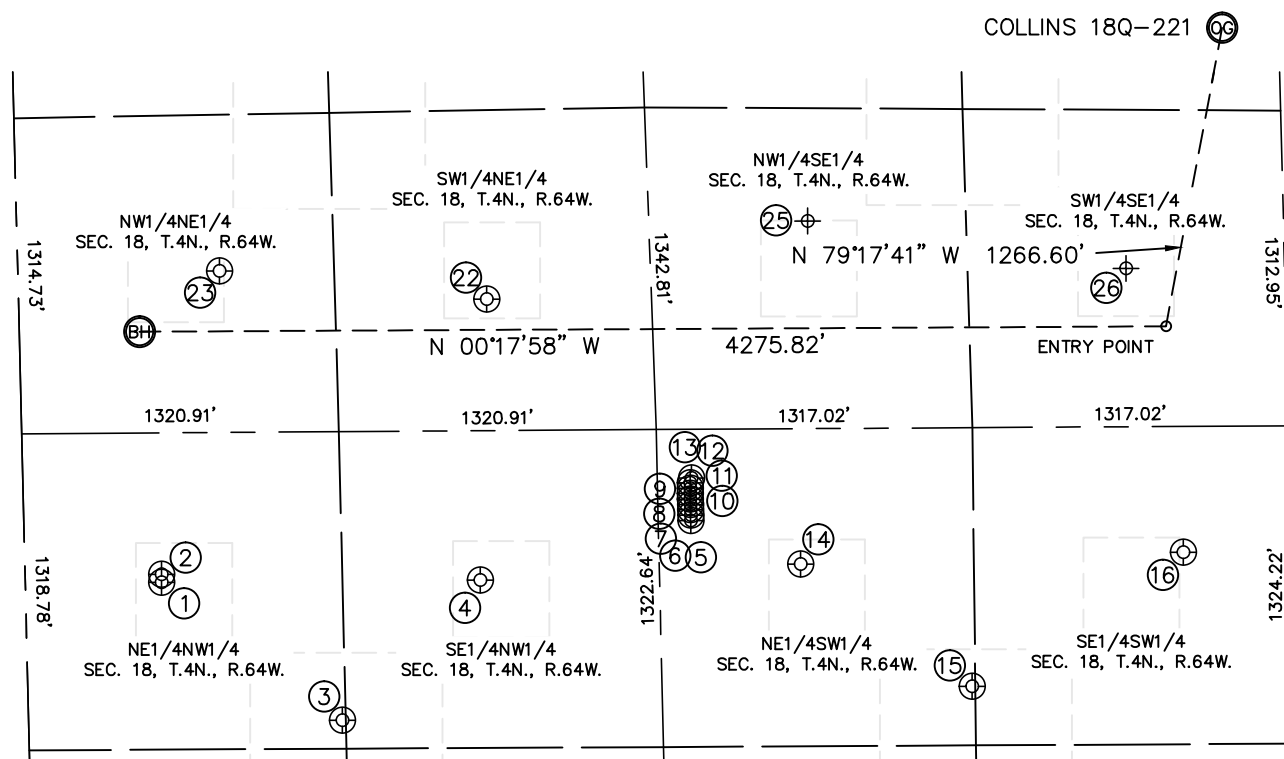
NOTE:

- 1) Bearings shown are Grid Bearings of the Colorado State Plane Coordinate System, North Zone, North American Datum 1983. The lineal dimensions as contained herein are based upon the "U.S. Survey Foot."
- 2) Ground elevations are based on an observed GPS elevation (NAVD 1988 DATUM).
- 3) IMPROVEMENTS: See LOCATION DRAWING for all visible improvements within 500' of disturbed area.
- 4) SURFACE USE: CROP LAND
- 5) INSTRUMENT OPERATOR: WYATT HALL
- 6) NEAREST CULTURAL ITEMS:
BUILDING: ±532' SE
BUILDING UNIT: ±1070' NE
HIGH OCCUPANCY BUILDING UNIT: +5280'
DESIGNATED OUTSIDE ACTIVITY AREA: +5280'
PUBLIC ROAD: ±223' S (CR 44)
ABOVEGROUND UTILITY: ±201' S
RAILROAD: +5280'
PROPERTY LINE: ±234' S

SITE SKETCH

COLLINS 18Q-221

SECTION: 18
TOWNSHIP: 4N
RANGE: 64W



WELL NO.	WELL NAME	SHL FOOTAGE				SHL LAT°	SHL LONG°	PDOP	ELEV (FT.)	1/4/1/4
1	FRY 21-18	567	FNL	1781	FWL	40.31794	-104.59567	2.0	4838	NENW
2	FRY 21-6I	567	FNL	1814	FWL	40.31794	-104.59556	2.0	4839	NENW
3	FRY 5	1306	FNL	1202	FWL	40.31589	-104.59776	1.9	4818	NENW
4	FRY 22-18	1895	FNL	1783	FWL	40.31429	-104.59569	2.1	4830	SENW
5	NEI C18-32D	2490	FSL	2026	FWL	40.31188	-104.59483	2.1	4834	NESW
6	NEI PC18-20D	2489	FSL	2049	FWL	40.31188	-104.59475	2.1	4834	NESW
7	NEI C18-33D	2490	FSL	2072	FWL	40.31188	-104.59467	2.1	4834	NESW
8	NEI C18-24D	2491	FSL	2094	FWL	40.31188	-104.59459	2.1	4834	NESW
9	OSTER C19-27D	2491	FSL	2116	FWL	40.31188	-104.59451	2.1	4834	NESW
10	NEI C18-23D	2492	FSL	2139	FWL	40.31188	-104.59443	2.1	4833	NESW
11	NEI C17-33D	2492	FSL	2161	FWL	40.31188	-104.59435	2.2	4833	NESW
12	NEI C18-21D	2492	FSL	2184	FWL	40.31188	-104.59427	2.2	4834	NESW
13	NEI C18-22D	2487	FSL	2204	FWL	40.31187	-104.59420	2.2	4834	NESW
14	FARR 2	2033	FSL	1844	FWL	40.31063	-104.59550	2.4	4829	NESW
15	FARR C 18-25	1318	FSL	1330	FWL	40.30868	-104.59735	2.4	4828	NESW
16	FARR 18-14	439	FSL	1885	FWL	40.30625	-104.59538	1.8	4843	SESW
22	FRICK 32-18	1949	FNL	2122	FEL	40.31419	-104.59149	1.6	4802	SWNE
23	FRICK C 18-2	839	FNL	1975	FEL	40.31724	-104.59104	1.8	4801	NWNE
25	RITER C 18-10	1981	FSL	1803	FEL	40.31065	-104.59044	NA	4805	NWSE
26	SCHNEIDER/DIC/COLTON 34-18	660	FSL	1980	FEL	40.30684	-104.59121	NA	4801	SWSE

NOTE: THE ABANDONED WELL DATA SHOWN IN RED ABOVE WAS OBTAINED FROM COGCC SCOUT CARDS.



DATE: 8/25/2014
PROJECT#: 2014149