

Synergy Resources

Well Name: **SRC Evans P-26-23-14CHZ**

Surface Location: SRC Evans Center Pad Sec.26-T5N-R66W
North American Datum 1983 , US State Plane 1983 , Colorado Northern Zone

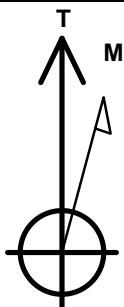
Ground Elevation: 4748.0

+N/-S	+E/-W	Northing	Easting	Latitude	Longitude	Slot
0.0	0.0	1379405.88	3210590.73	40.372407	-104.744166	

RKB - 15' WELL @ 4763.0ft (RKB - 15')

WELLBORE TARGET DETAILS

Name	TVD	+N/-S	+E/-W	Shape
SHL 1953'FNL, 2590'FEL, SEC.26	1.0	0.0	0.0	Point
BHL 2185'FSL, 2279'FEL, SEC.14	7200.0	9399.6	286.9	Point



Azimuths to True North
Magnetic North: 8.40°

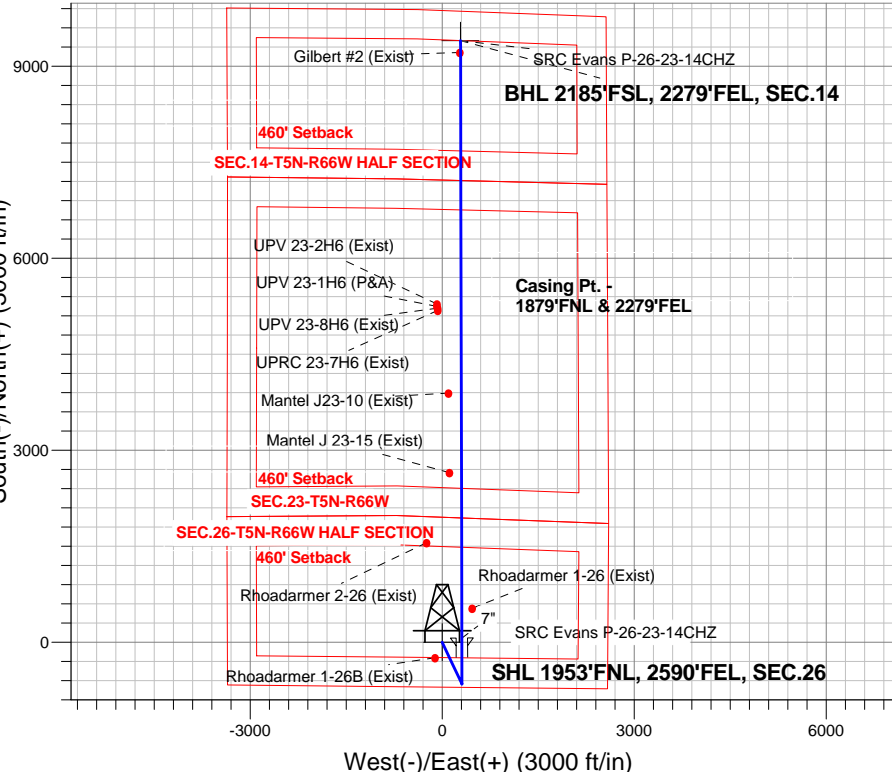
Magnetic Field
Strength: 52764.0snT
Dip Angle: 66.91°
Date: 10/30/2014
Model: IGRF2010

SRC Evans Center Pad Sec.26-T5N-R66W
SRC Evans P-26-23-14CHZ
Plan #1 (10-27-14)
8:37, October 30 2014

ANNOTATIONS

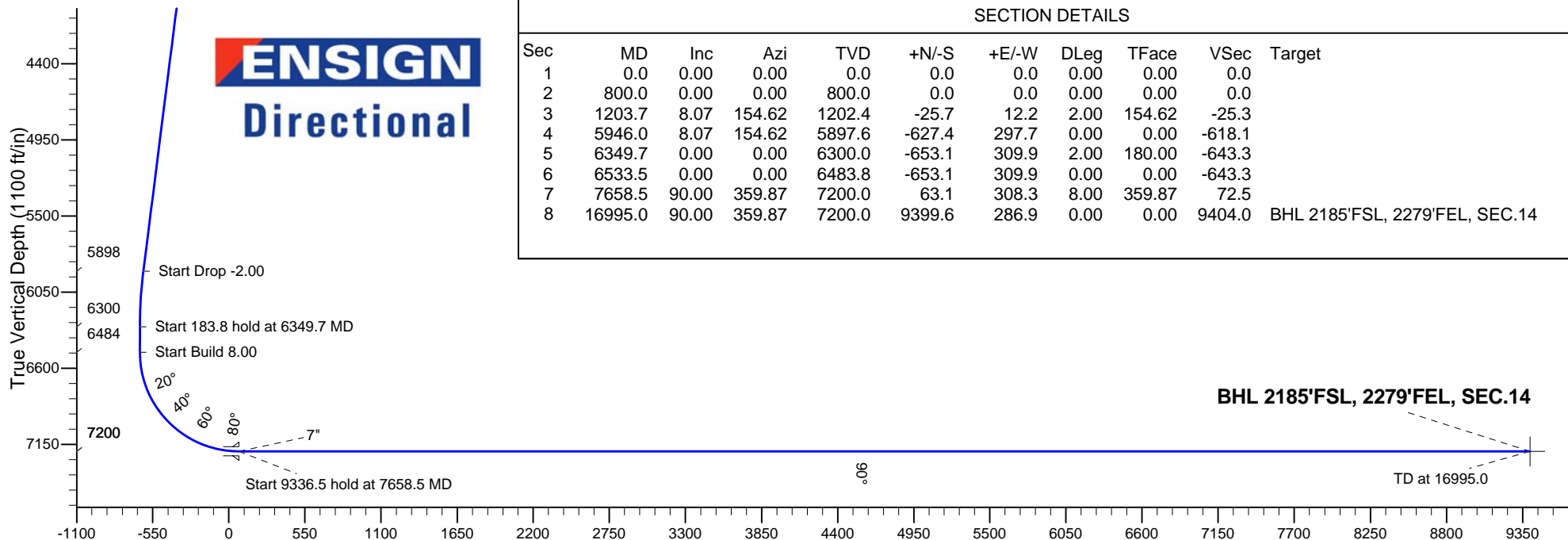
TVD	MD	Annotation
800.0	800.0	KOP - Start Build 2.00
5897.6	5946.0	Start Drop -2.00
6300.0	6349.7	Start 183.8 hold at 6349.7 MD
6483.8	6533.5	Start Build 8.00
7200.0	7658.5	Start 9336.5 hold at 7658.5 MD
7200.0	16995.0	TD at 16995.0

South(-)/North(+) (3000 ft/in)



West(-)/East(+) (3000 ft/in)

ENSIGN
Directional



Vertical Section at 1.75° (1100 ft/in)

SECTION DETAILS

Sec	MD	Inc	Azi	TVD	+N/-S	+E/-W	DLeg	TFace	VSec	Target
1	0.0	0.00	0.00	0.0	0.0	0.0	0.00	0.00	0.0	
2	800.0	0.00	0.00	800.0	0.0	0.0	0.00	0.00	0.0	
3	1203.7	8.07	154.62	1202.4	-25.7	12.2	2.00	154.62	-25.3	
4	5946.0	8.07	154.62	5897.6	-627.4	297.7	0.00	0.00	-618.1	
5	6349.7	0.00	0.00	6300.0	-653.1	309.9	2.00	180.00	-643.3	
6	6533.5	0.00	0.00	6483.8	-653.1	309.9	0.00	0.00	-643.3	
7	7658.5	90.00	359.87	7200.0	63.1	308.3	8.00	359.87	72.5	
8	16995.0	90.00	359.87	7200.0	9399.6	286.9	0.00	0.00	9404.0	BHL 2185'FSL, 2279'FEL, SEC.14

BHL 2185'FSL, 2279'FEL, SEC.14

TD at 16995.0



Synergy Resources

SEC.26-T5N-R66W

SRC Evans Center Pad Sec.26-T5N-R66W

SRC Evans P-26-23-14CHZ

Wellbore #1

Plan: Plan #1 (10-27-14)

Standard Planning Report

30 October, 2014

Plan Sections										
Measured Depth (ft)	Inclination (°)	Azimuth (°)	Vertical Depth (ft)	+N/-S (ft)	+E/-W (ft)	Dogleg Rate (°/100ft)	Build Rate (°/100ft)	Turn Rate (°/100ft)	TFO (°)	Target
0.0	0.00	0.00	0.0	0.0	0.0	0.00	0.00	0.00	0.00	
800.0	0.00	0.00	800.0	0.0	0.0	0.00	0.00	0.00	0.00	
1,203.7	8.07	154.62	1,202.4	-25.7	12.2	2.00	2.00	0.00	154.62	
5,946.0	8.07	154.62	5,897.6	-627.4	297.7	0.00	0.00	0.00	0.00	
6,349.7	0.00	0.00	6,300.0	-653.1	309.9	2.00	-2.00	0.00	180.00	
6,533.5	0.00	0.00	6,483.8	-653.1	309.9	0.00	0.00	0.00	0.00	
7,658.5	90.00	359.87	7,200.0	63.1	308.3	8.00	8.00	0.00	359.87	
16,995.0	90.00	359.87	7,200.0	9,399.6	286.9	0.00	0.00	0.00	0.00	BHL 2185'FSL, 227

Database:	Landmark	Local Co-ordinate Reference:	Well SRC Evans P-26-23-14CHZ
Company:	Synergy Resources	TVD Reference:	WELL @ 4763.0ft (RKB - 15')
Project:	SEC.26-T5N-R66W	MD Reference:	WELL @ 4763.0ft (RKB - 15')
Site:	SRC Evans Center Pad Sec.26-T5N-R66W	North Reference:	True
Well:	SRC Evans P-26-23-14CHZ	Survey Calculation Method:	Minimum Curvature
Wellbore:	Wellbore #1		
Design:	Plan #1 (10-27-14)		

Planned Survey									
Measured Depth (ft)	Inclination (°)	Azimuth (°)	Vertical Depth (ft)	+N/-S (ft)	+E/-W (ft)	Vertical Section (ft)	Dogleg Rate (°/100ft)	Build Rate (°/100ft)	Turn Rate (°/100ft)
0.0	0.00	0.00	0.0	0.0	0.0	0.0	0.00	0.00	0.00
1.0	0.00	0.00	1.0	0.0	0.0	0.0	0.00	0.00	0.00
SHL 1953'FNL, 2590'FEL, SEC.26									
100.0	0.00	0.00	100.0	0.0	0.0	0.0	0.00	0.00	0.00
200.0	0.00	0.00	200.0	0.0	0.0	0.0	0.00	0.00	0.00
300.0	0.00	0.00	300.0	0.0	0.0	0.0	0.00	0.00	0.00
400.0	0.00	0.00	400.0	0.0	0.0	0.0	0.00	0.00	0.00
500.0	0.00	0.00	500.0	0.0	0.0	0.0	0.00	0.00	0.00
600.0	0.00	0.00	600.0	0.0	0.0	0.0	0.00	0.00	0.00
700.0	0.00	0.00	700.0	0.0	0.0	0.0	0.00	0.00	0.00
800.0	0.00	0.00	800.0	0.0	0.0	0.0	0.00	0.00	0.00
KOP - Start Build 2.00									
900.0	2.00	154.62	900.0	-1.6	0.7	-1.6	2.00	2.00	0.00
1,000.0	4.00	154.62	999.8	-6.3	3.0	-6.2	2.00	2.00	0.00
1,100.0	6.00	154.62	1,099.5	-14.2	6.7	-14.0	2.00	2.00	0.00
1,200.0	8.00	154.62	1,198.7	-25.2	12.0	-24.8	2.00	2.00	0.00
1,203.7	8.07	154.62	1,202.4	-25.7	12.2	-25.3	2.00	2.00	0.00
1,300.0	8.07	154.62	1,297.7	-37.9	18.0	-37.3	0.00	0.00	0.00
1,400.0	8.07	154.62	1,396.7	-50.6	24.0	-49.8	0.00	0.00	0.00
1,500.0	8.07	154.62	1,495.7	-63.3	30.0	-62.3	0.00	0.00	0.00
1,600.0	8.07	154.62	1,594.7	-75.9	36.0	-74.8	0.00	0.00	0.00
1,700.0	8.07	154.62	1,693.7	-88.6	42.1	-87.3	0.00	0.00	0.00
1,800.0	8.07	154.62	1,792.8	-101.3	48.1	-99.8	0.00	0.00	0.00
1,900.0	8.07	154.62	1,891.8	-114.0	54.1	-112.3	0.00	0.00	0.00
2,000.0	8.07	154.62	1,990.8	-126.7	60.1	-124.8	0.00	0.00	0.00
2,100.0	8.07	154.62	2,089.8	-139.4	66.1	-137.3	0.00	0.00	0.00
2,200.0	8.07	154.62	2,188.8	-152.1	72.2	-149.8	0.00	0.00	0.00
2,300.0	8.07	154.62	2,287.8	-164.8	78.2	-162.3	0.00	0.00	0.00
2,400.0	8.07	154.62	2,386.8	-177.5	84.2	-174.8	0.00	0.00	0.00
2,500.0	8.07	154.62	2,485.8	-190.2	90.2	-187.3	0.00	0.00	0.00
2,600.0	8.07	154.62	2,584.8	-202.8	96.3	-199.8	0.00	0.00	0.00
2,700.0	8.07	154.62	2,683.8	-215.5	102.3	-212.3	0.00	0.00	0.00
2,800.0	8.07	154.62	2,782.8	-228.2	108.3	-224.8	0.00	0.00	0.00
2,900.0	8.07	154.62	2,881.8	-240.9	114.3	-237.3	0.00	0.00	0.00
3,000.0	8.07	154.62	2,980.9	-253.6	120.3	-249.8	0.00	0.00	0.00
3,100.0	8.07	154.62	3,079.9	-266.3	126.4	-262.3	0.00	0.00	0.00
3,200.0	8.07	154.62	3,178.9	-279.0	132.4	-274.8	0.00	0.00	0.00
3,300.0	8.07	154.62	3,277.9	-291.7	138.4	-287.3	0.00	0.00	0.00
3,400.0	8.07	154.62	3,376.9	-304.4	144.4	-299.8	0.00	0.00	0.00
3,500.0	8.07	154.62	3,475.9	-317.1	150.4	-312.3	0.00	0.00	0.00
3,600.0	8.07	154.62	3,574.9	-329.7	156.5	-324.8	0.00	0.00	0.00
3,700.0	8.07	154.62	3,673.9	-342.4	162.5	-337.3	0.00	0.00	0.00
3,800.0	8.07	154.62	3,772.9	-355.1	168.5	-349.8	0.00	0.00	0.00
3,900.0	8.07	154.62	3,871.9	-367.8	174.5	-362.3	0.00	0.00	0.00
4,000.0	8.07	154.62	3,970.9	-380.5	180.6	-374.8	0.00	0.00	0.00
4,100.0	8.07	154.62	4,070.0	-393.2	186.6	-387.3	0.00	0.00	0.00
4,200.0	8.07	154.62	4,169.0	-405.9	192.6	-399.8	0.00	0.00	0.00
4,300.0	8.07	154.62	4,268.0	-418.6	198.6	-412.3	0.00	0.00	0.00
4,400.0	8.07	154.62	4,367.0	-431.3	204.6	-424.8	0.00	0.00	0.00
4,500.0	8.07	154.62	4,466.0	-444.0	210.7	-437.3	0.00	0.00	0.00
4,600.0	8.07	154.62	4,565.0	-456.6	216.7	-449.8	0.00	0.00	0.00
4,700.0	8.07	154.62	4,664.0	-469.3	222.7	-462.3	0.00	0.00	0.00
4,800.0	8.07	154.62	4,763.0	-482.0	228.7	-474.8	0.00	0.00	0.00
4,900.0	8.07	154.62	4,862.0	-494.7	234.7	-487.3	0.00	0.00	0.00

Database:	Landmark	Local Co-ordinate Reference:	Well SRC Evans P-26-23-14CHZ
Company:	Synergy Resources	TVD Reference:	WELL @ 4763.0ft (RKB - 15')
Project:	SEC.26-T5N-R66W	MD Reference:	WELL @ 4763.0ft (RKB - 15')
Site:	SRC Evans Center Pad Sec.26-T5N-R66W	North Reference:	True
Well:	SRC Evans P-26-23-14CHZ	Survey Calculation Method:	Minimum Curvature
Wellbore:	Wellbore #1		
Design:	Plan #1 (10-27-14)		

Planned Survey									
Measured Depth (ft)	Inclination (°)	Azimuth (°)	Vertical Depth (ft)	+N/-S (ft)	+E/-W (ft)	Vertical Section (ft)	Dogleg Rate (°/100ft)	Build Rate (°/100ft)	Turn Rate (°/100ft)
5,000.0	8.07	154.62	4,961.0	-507.4	240.8	-499.8	0.00	0.00	0.00
5,100.0	8.07	154.62	5,060.0	-520.1	246.8	-512.3	0.00	0.00	0.00
5,200.0	8.07	154.62	5,159.0	-532.8	252.8	-524.8	0.00	0.00	0.00
5,300.0	8.07	154.62	5,258.1	-545.5	258.8	-537.3	0.00	0.00	0.00
5,400.0	8.07	154.62	5,357.1	-558.2	264.9	-549.8	0.00	0.00	0.00
5,500.0	8.07	154.62	5,456.1	-570.8	270.9	-562.3	0.00	0.00	0.00
5,600.0	8.07	154.62	5,555.1	-583.5	276.9	-574.8	0.00	0.00	0.00
5,700.0	8.07	154.62	5,654.1	-596.2	282.9	-587.3	0.00	0.00	0.00
5,800.0	8.07	154.62	5,753.1	-608.9	288.9	-599.8	0.00	0.00	0.00
5,900.0	8.07	154.62	5,852.1	-621.6	295.0	-612.3	0.00	0.00	0.00
5,946.0	8.07	154.62	5,897.7	-627.4	297.7	-618.1	0.00	0.00	0.00
Start Drop -2.00									
6,000.0	6.99	154.62	5,951.2	-633.8	300.8	-624.4	2.00	-2.00	0.00
6,100.0	4.99	154.62	6,050.6	-643.3	305.2	-633.7	2.00	-2.00	0.00
6,200.0	2.99	154.62	6,150.4	-649.6	308.2	-639.9	2.00	-2.00	0.00
6,300.0	0.99	154.62	6,250.3	-652.7	309.7	-643.0	2.00	-2.00	0.00
6,349.7	0.00	0.00	6,300.0	-653.1	309.9	-643.3	2.00	-2.00	0.00
Start 183.8 hold at 6349.7 MD									
6,400.0	0.00	0.00	6,350.3	-653.1	309.9	-643.3	0.00	0.00	0.00
6,500.0	0.00	0.00	6,450.3	-653.1	309.9	-643.3	0.00	0.00	0.00
6,533.5	0.00	0.00	6,483.8	-653.1	309.9	-643.3	0.00	0.00	0.00
Start Build 8.00									
6,600.0	5.32	359.87	6,550.2	-650.0	309.9	-640.3	8.00	8.00	0.00
6,700.0	13.32	359.87	6,648.8	-633.8	309.9	-624.1	8.00	8.00	0.00
6,800.0	21.32	359.87	6,744.2	-604.1	309.8	-594.3	8.00	8.00	0.00
6,900.0	29.32	359.87	6,834.5	-561.3	309.7	-551.6	8.00	8.00	0.00
7,000.0	37.32	359.87	6,918.0	-506.5	309.6	-496.8	8.00	8.00	0.00
7,100.0	45.32	359.87	6,993.1	-440.5	309.4	-430.8	8.00	8.00	0.00
7,200.0	53.32	359.87	7,058.2	-364.7	309.2	-355.1	8.00	8.00	0.00
7,300.0	61.32	359.87	7,112.1	-280.6	309.0	-271.0	8.00	8.00	0.00
7,400.0	69.32	359.87	7,153.9	-189.8	308.8	-180.3	8.00	8.00	0.00
7,500.0	77.32	359.87	7,182.5	-94.1	308.6	-84.6	8.00	8.00	0.00
7,600.0	85.32	359.87	7,197.6	4.7	308.4	14.1	8.00	8.00	0.00
7,658.5	90.00	359.87	7,200.0	63.1	308.3	72.5	8.00	8.00	0.00
Start 9336.5 hold at 7658.5 MD - 7"									
7,700.0	90.00	359.87	7,200.0	104.6	308.2	114.0	0.00	0.00	0.00
7,800.0	90.00	359.87	7,200.0	204.6	307.9	213.9	0.00	0.00	0.00
7,900.0	90.00	359.87	7,200.0	304.6	307.7	313.9	0.00	0.00	0.00
8,000.0	90.00	359.87	7,200.0	404.6	307.5	413.8	0.00	0.00	0.00
8,100.0	90.00	359.87	7,200.0	504.6	307.2	513.7	0.00	0.00	0.00
8,200.0	90.00	359.87	7,200.0	604.6	307.0	613.7	0.00	0.00	0.00
8,300.0	90.00	359.87	7,200.0	704.6	306.8	713.6	0.00	0.00	0.00
8,400.0	90.00	359.87	7,200.0	804.6	306.6	813.6	0.00	0.00	0.00
8,500.0	90.00	359.87	7,200.0	904.6	306.3	913.5	0.00	0.00	0.00
8,600.0	90.00	359.87	7,200.0	1,004.6	306.1	1,013.5	0.00	0.00	0.00
8,700.0	90.00	359.87	7,200.0	1,104.6	305.9	1,113.4	0.00	0.00	0.00
8,800.0	90.00	359.87	7,200.0	1,204.6	305.6	1,213.4	0.00	0.00	0.00
8,900.0	90.00	359.87	7,200.0	1,304.6	305.4	1,313.3	0.00	0.00	0.00
9,000.0	90.00	359.87	7,200.0	1,404.6	305.2	1,413.3	0.00	0.00	0.00
9,100.0	90.00	359.87	7,200.0	1,504.6	305.0	1,513.2	0.00	0.00	0.00
9,200.0	90.00	359.87	7,200.0	1,604.6	304.7	1,613.2	0.00	0.00	0.00
9,300.0	90.00	359.87	7,200.0	1,704.6	304.5	1,713.1	0.00	0.00	0.00
9,400.0	90.00	359.87	7,200.0	1,804.6	304.3	1,813.0	0.00	0.00	0.00

Database:	Landmark	Local Co-ordinate Reference:	Well SRC Evans P-26-23-14CHZ
Company:	Synergy Resources	TVD Reference:	WELL @ 4763.0ft (RKB - 15')
Project:	SEC.26-T5N-R66W	MD Reference:	WELL @ 4763.0ft (RKB - 15')
Site:	SRC Evans Center Pad Sec.26-T5N-R66W	North Reference:	True
Well:	SRC Evans P-26-23-14CHZ	Survey Calculation Method:	Minimum Curvature
Wellbore:	Wellbore #1		
Design:	Plan #1 (10-27-14)		

Planned Survey									
Measured Depth (ft)	Inclination (°)	Azimuth (°)	Vertical Depth (ft)	+N/-S (ft)	+E/-W (ft)	Vertical Section (ft)	Dogleg Rate (°/100ft)	Build Rate (°/100ft)	Turn Rate (°/100ft)
9,500.0	90.00	359.87	7,200.0	1,904.6	304.0	1,913.0	0.00	0.00	0.00
9,600.0	90.00	359.87	7,200.0	2,004.6	303.8	2,012.9	0.00	0.00	0.00
9,700.0	90.00	359.87	7,200.0	2,104.6	303.6	2,112.9	0.00	0.00	0.00
9,800.0	90.00	359.87	7,200.0	2,204.6	303.4	2,212.8	0.00	0.00	0.00
9,900.0	90.00	359.87	7,200.0	2,304.6	303.1	2,312.8	0.00	0.00	0.00
10,000.0	90.00	359.87	7,200.0	2,404.6	302.9	2,412.7	0.00	0.00	0.00
10,100.0	90.00	359.87	7,200.0	2,504.6	302.7	2,512.7	0.00	0.00	0.00
10,200.0	90.00	359.87	7,200.0	2,604.6	302.4	2,612.6	0.00	0.00	0.00
10,300.0	90.00	359.87	7,200.0	2,704.6	302.2	2,712.6	0.00	0.00	0.00
10,400.0	90.00	359.87	7,200.0	2,804.6	302.0	2,812.5	0.00	0.00	0.00
10,500.0	90.00	359.87	7,200.0	2,904.6	301.8	2,912.5	0.00	0.00	0.00
10,600.0	90.00	359.87	7,200.0	3,004.6	301.5	3,012.4	0.00	0.00	0.00
10,700.0	90.00	359.87	7,200.0	3,104.6	301.3	3,112.3	0.00	0.00	0.00
10,800.0	90.00	359.87	7,200.0	3,204.6	301.1	3,212.3	0.00	0.00	0.00
10,900.0	90.00	359.87	7,200.0	3,304.6	300.8	3,312.2	0.00	0.00	0.00
11,000.0	90.00	359.87	7,200.0	3,404.6	300.6	3,412.2	0.00	0.00	0.00
11,100.0	90.00	359.87	7,200.0	3,504.6	300.4	3,512.1	0.00	0.00	0.00
11,200.0	90.00	359.87	7,200.0	3,604.6	300.2	3,612.1	0.00	0.00	0.00
11,300.0	90.00	359.87	7,200.0	3,704.6	299.9	3,712.0	0.00	0.00	0.00
11,400.0	90.00	359.87	7,200.0	3,804.6	299.7	3,812.0	0.00	0.00	0.00
11,500.0	90.00	359.87	7,200.0	3,904.6	299.5	3,911.9	0.00	0.00	0.00
11,600.0	90.00	359.87	7,200.0	4,004.6	299.2	4,011.9	0.00	0.00	0.00
11,700.0	90.00	359.87	7,200.0	4,104.6	299.0	4,111.8	0.00	0.00	0.00
11,800.0	90.00	359.87	7,200.0	4,204.6	298.8	4,211.8	0.00	0.00	0.00
11,900.0	90.00	359.87	7,200.0	4,304.6	298.5	4,311.7	0.00	0.00	0.00
12,000.0	90.00	359.87	7,200.0	4,404.6	298.3	4,411.6	0.00	0.00	0.00
12,100.0	90.00	359.87	7,200.0	4,504.6	298.1	4,511.6	0.00	0.00	0.00
12,200.0	90.00	359.87	7,200.0	4,604.6	297.9	4,611.5	0.00	0.00	0.00
12,300.0	90.00	359.87	7,200.0	4,704.6	297.6	4,711.5	0.00	0.00	0.00
12,400.0	90.00	359.87	7,200.0	4,804.6	297.4	4,811.4	0.00	0.00	0.00
12,500.0	90.00	359.87	7,200.0	4,904.6	297.2	4,911.4	0.00	0.00	0.00
12,600.0	90.00	359.87	7,200.0	5,004.6	296.9	5,011.3	0.00	0.00	0.00
12,700.0	90.00	359.87	7,200.0	5,104.6	296.7	5,111.3	0.00	0.00	0.00
12,800.0	90.00	359.87	7,200.0	5,204.6	296.5	5,211.2	0.00	0.00	0.00
12,900.0	90.00	359.87	7,200.0	5,304.6	296.3	5,311.2	0.00	0.00	0.00
13,000.0	90.00	359.87	7,200.0	5,404.6	296.0	5,411.1	0.00	0.00	0.00
13,100.0	90.00	359.87	7,200.0	5,504.6	295.8	5,511.1	0.00	0.00	0.00
13,200.0	90.00	359.87	7,200.0	5,604.6	295.6	5,611.0	0.00	0.00	0.00
13,300.0	90.00	359.87	7,200.0	5,704.6	295.3	5,711.0	0.00	0.00	0.00
13,400.0	90.00	359.87	7,200.0	5,804.6	295.1	5,810.9	0.00	0.00	0.00
13,500.0	90.00	359.87	7,200.0	5,904.6	294.9	5,910.8	0.00	0.00	0.00
13,600.0	90.00	359.87	7,200.0	6,004.6	294.7	6,010.8	0.00	0.00	0.00
13,700.0	90.00	359.87	7,200.0	6,104.6	294.4	6,110.7	0.00	0.00	0.00
13,800.0	90.00	359.87	7,200.0	6,204.6	294.2	6,210.7	0.00	0.00	0.00
13,900.0	90.00	359.87	7,200.0	6,304.6	294.0	6,310.6	0.00	0.00	0.00
14,000.0	90.00	359.87	7,200.0	6,404.6	293.7	6,410.6	0.00	0.00	0.00
14,100.0	90.00	359.87	7,200.0	6,504.6	293.5	6,510.5	0.00	0.00	0.00
14,200.0	90.00	359.87	7,200.0	6,604.6	293.3	6,610.5	0.00	0.00	0.00
14,300.0	90.00	359.87	7,200.0	6,704.6	293.1	6,710.4	0.00	0.00	0.00
14,400.0	90.00	359.87	7,200.0	6,804.6	292.8	6,810.4	0.00	0.00	0.00
14,500.0	90.00	359.87	7,200.0	6,904.6	292.6	6,910.3	0.00	0.00	0.00
14,600.0	90.00	359.87	7,200.0	7,004.6	292.4	7,010.3	0.00	0.00	0.00
14,700.0	90.00	359.87	7,200.0	7,104.6	292.1	7,110.2	0.00	0.00	0.00
14,800.0	90.00	359.87	7,200.0	7,204.6	291.9	7,210.1	0.00	0.00	0.00

Database:	Landmark	Local Co-ordinate Reference:	Well SRC Evans P-26-23-14CHZ
Company:	Synergy Resources	TVD Reference:	WELL @ 4763.0ft (RKB - 15')
Project:	SEC.26-T5N-R66W	MD Reference:	WELL @ 4763.0ft (RKB - 15')
Site:	SRC Evans Center Pad Sec.26-T5N-R66W	North Reference:	True
Well:	SRC Evans P-26-23-14CHZ	Survey Calculation Method:	Minimum Curvature
Wellbore:	Wellbore #1		
Design:	Plan #1 (10-27-14)		

Planned Survey										
Measured Depth (ft)	Inclination (°)	Azimuth (°)	Vertical Depth (ft)	+N/-S (ft)	+E/-W (ft)	Vertical Section (ft)	Dogleg Rate (°/100ft)	Build Rate (°/100ft)	Turn Rate (°/100ft)	
14,900.0	90.00	359.87	7,200.0	7,304.6	291.7	7,310.1	0.00	0.00	0.00	
15,000.0	90.00	359.87	7,200.0	7,404.6	291.5	7,410.0	0.00	0.00	0.00	
15,100.0	90.00	359.87	7,200.0	7,504.6	291.2	7,510.0	0.00	0.00	0.00	
15,200.0	90.00	359.87	7,200.0	7,604.6	291.0	7,609.9	0.00	0.00	0.00	
15,300.0	90.00	359.87	7,200.0	7,704.6	290.8	7,709.9	0.00	0.00	0.00	
15,400.0	90.00	359.87	7,200.0	7,804.6	290.5	7,809.8	0.00	0.00	0.00	
15,500.0	90.00	359.87	7,200.0	7,904.6	290.3	7,909.8	0.00	0.00	0.00	
15,600.0	90.00	359.87	7,200.0	8,004.6	290.1	8,009.7	0.00	0.00	0.00	
15,700.0	90.00	359.87	7,200.0	8,104.6	289.9	8,109.7	0.00	0.00	0.00	
15,800.0	90.00	359.87	7,200.0	8,204.6	289.6	8,209.6	0.00	0.00	0.00	
15,900.0	90.00	359.87	7,200.0	8,304.6	289.4	8,309.6	0.00	0.00	0.00	
16,000.0	90.00	359.87	7,200.0	8,404.6	289.2	8,409.5	0.00	0.00	0.00	
16,100.0	90.00	359.87	7,200.0	8,504.6	288.9	8,509.4	0.00	0.00	0.00	
16,200.0	90.00	359.87	7,200.0	8,604.6	288.7	8,609.4	0.00	0.00	0.00	
16,300.0	90.00	359.87	7,200.0	8,704.6	288.5	8,709.3	0.00	0.00	0.00	
16,400.0	90.00	359.87	7,200.0	8,804.6	288.2	8,809.3	0.00	0.00	0.00	
16,500.0	90.00	359.87	7,200.0	8,904.6	288.0	8,909.2	0.00	0.00	0.00	
16,600.0	90.00	359.87	7,200.0	9,004.6	287.8	9,009.2	0.00	0.00	0.00	
16,700.0	90.00	359.87	7,200.0	9,104.6	287.6	9,109.1	0.00	0.00	0.00	
16,800.0	90.00	359.87	7,200.0	9,204.6	287.3	9,209.1	0.00	0.00	0.00	
16,900.0	90.00	359.87	7,200.0	9,304.6	287.1	9,309.0	0.00	0.00	0.00	
16,995.0	90.00	359.87	7,200.0	9,399.6	286.9	9,404.0	0.00	0.00	0.00	
TD at 16995.0 - BHL 2185'FSL, 2279'FEL, SEC.14										

Targets										
Target Name	Dip Angle (°)	Dip Dir. (°)	TVD (ft)	+N/-S (ft)	+E/-W (ft)	Northing (ft)	Easting (ft)	Latitude	Longitude	
- hit/miss target										
- Shape										
SHL 1953'FNL, 2590'I	0.00	0.00	1.0	0.0	0.0	1,379,405.88	3,210,590.73	40.372407	-104.744166	
- plan hits target center										
- Point										
BHL 2185'FSL, 2279'f	0.00	0.00	7,200.0	9,399.6	286.9	1,388,807.18	3,210,797.48	40.398208	-104.743136	
- plan hits target center										
- Point										

Casing Points						
Measured Depth (ft)	Vertical Depth (ft)	Name	Casing Diameter (")	Hole Diameter (")		
7,658.5	7,200.0	7"	7	7-1/2		

Database:	Landmark	Local Co-ordinate Reference:	Well SRC Evans P-26-23-14CHZ
Company:	Synergy Resources	TVD Reference:	WELL @ 4763.0ft (RKB - 15')
Project:	SEC.26-T5N-R66W	MD Reference:	WELL @ 4763.0ft (RKB - 15')
Site:	SRC Evans Center Pad Sec.26-T5N-R66W	North Reference:	True
Well:	SRC Evans P-26-23-14CHZ	Survey Calculation Method:	Minimum Curvature
Wellbore:	Wellbore #1		
Design:	Plan #1 (10-27-14)		

Plan Annotations				
Measured Depth (ft)	Vertical Depth (ft)	Local Coordinates		Comment
		+N/-S (ft)	+E/-W (ft)	
800.0	800.0	0.0	0.0	KOP - Start Build 2.00
5,946.0	5,897.6	-25.7	12.2	Start Drop -2.00
6,349.7	6,300.0	-627.4	297.7	Start 183.8 hold at 6349.7 MD
6,533.5	6,483.8	-653.1	309.9	Start Build 8.00
7,658.5	7,200.0	-653.1	309.9	Start 9336.5 hold at 7658.5 MD
16,995.0	7,200.0	63.1	308.3	TD at 16995.0



Synergy Resources

SEC.26-T5N-R66W

SRC Evans Center Pad Sec.26-T5N-R66W

SRC Evans P-26-23-14CHZ

Wellbore #1

Plan #1 (10-27-14)

Anticollision Report

30 October, 2014

Company:	Synergy Resources	Local Co-ordinate Reference:	Well SRC Evans P-26-23-14CHZ
Project:	SEC.26-T5N-R66W	TVD Reference:	WELL @ 4763.0ft (RKB - 15')
Reference Site:	SRC Evans Center Pad Sec.26-T5N-R66W	MD Reference:	WELL @ 4763.0ft (RKB - 15')
Site Error:	0.0ft	North Reference:	True
Reference Well:	SRC Evans P-26-23-14CHZ	Survey Calculation Method:	Minimum Curvature
Well Error:	0.0ft	Output errors are at	2.00 sigma
Reference Wellbore	Wellbore #1	Database:	Landmark
Reference Design:	Plan #1 (10-27-14)	Offset TVD Reference:	Offset Datum

Reference	Plan #1 (10-27-14)		
Filter type:	NO GLOBAL FILTER: Using user defined selection & filtering criteria		
Interpolation Method:	Stations	Error Model:	ISCWSA
Depth Range:	Unlimited	Scan Method:	Closest Approach 3D
Results Limited by:	Maximum center-center distance of 800.0ft	Error Surface:	Elliptical Conic
Warning Levels Evaluated at:	2.00 Sigma		

Survey Tool Program	Date 10/30/2014			
From (ft)	To (ft)	Survey (Wellbore)	Tool Name	Description
0.0	16,995.0	Plan #1 (10-27-14) (Wellbore #1)	MWD	MWD - Standard

Summary						
Site Name	Reference Measured Depth (ft)	Offset Measured Depth (ft)	Distance Between Centres (ft)	Distance Between Ellipses (ft)	Separation Factor	Warning
Offset Well - Wellbore - Design						
Existing Wells Sec.26-T5N-R66W						
Gilbert #2 (Exist) - Wellbore #1 - Wellbore #1	16,812.5	7,277.0	10.2	-316.9	0.031	Level 1, CC, ES, SF
Mantel J23-15 (Exist) - Wellbore #1 - Wellbore #1	10,245.5	7,227.0	189.2	-12.7	0.937	Level 1, CC, ES, SF
Mantel J23-10 (Exist) - Wellbore #1 - Wellbore #1	11,487.8	7,248.0	200.3	-25.0	0.889	Level 1, CC, ES, SF
Rhoadarmer 1-26 (Exist) - Wellbore #1 - Wellbore #1	8,124.4	7,215.0	162.6	-4.3	0.974	Level 1, CC, ES, SF
Rhoadarmer 1-26B (Exist) - Wellbore #1 - Wellbore #1	2,229.4	2,197.9	203.4	153.7	4.096	CC
Rhoadarmer 1-26B (Exist) - Wellbore #1 - Wellbore #1	2,500.0	2,465.8	206.9	151.0	3.703	ES
Rhoadarmer 1-26B (Exist) - Wellbore #1 - Wellbore #1	7,350.0	7,114.6	418.8	258.7	2.616	SF
Rhoadarmer 2-26 (Exist) - Wellbore #1 - Wellbore #1	9,153.4	7,210.0	548.4	366.1	3.010	CC, ES
Rhoadarmer 2-26 (Exist) - Wellbore #1 - Wellbore #1	9,200.0	7,210.0	550.3	367.3	3.007	SF
UPRC 23-7H6 (Exist) - Wellbore #1 - Wellbore #1	12,781.5	7,297.0	364.5	113.8	1.454	Level 3, CC, ES
UPRC 23-7H6 (Exist) - Wellbore #1 - Wellbore #1	12,800.0	7,297.0	365.0	113.9	1.454	Level 3, SF
UPV 23-1H6 (P&A) - Wellbore #1 - Wellbore #1	12,843.4	7,297.0	375.5	123.6	1.491	Level 3, CC, ES, SF
UPV 23-2H6 (Exist) - Wellbore #1 - Wellbore #1	12,879.9	7,297.0	378.2	125.6	1.497	Level 3, CC, ES
UPV 23-2H6 (Exist) - Wellbore #1 - Wellbore #1	12,900.0	7,297.0	378.7	125.8	1.497	Level 3, SF
UPV 23-8H6 (Exist) - Wellbore #1 - Wellbore #1	12,817.9	7,297.0	367.2	115.8	1.461	Level 3, CC, ES, SF
SRC Evans Center Pad Sec.26-T5N-R66W						
SRC Evans 23-26-23-14CHZ - Wellbore #1 - Plan #1 (10	400.0	399.0	44.8	43.2	28.521	CC, ES
SRC Evans 23-26-23-14CHZ - Wellbore #1 - Plan #1 (10	16,995.0	16,976.0	550.9	180.1	1.486	Level 3, SF
SRC Evans 23-26-23-14NHZ - Wellbore #1 - Plan #1 (10	600.0	600.0	22.2	19.8	8.988	CC, ES
SRC Evans 23-26-23-14NHZ - Wellbore #1 - Plan #1 (10	700.0	699.4	23.6	20.7	8.140	SF
SRC Evans 33-26-23-14NHZ - Wellbore #1 - Plan #1 (10	800.0	801.0	45.2	41.8	13.390	CC, ES
SRC Evans 33-26-23-14NHZ - Wellbore #1 - Plan #1 (10	16,995.0	16,701.9	430.8	166.7	1.631	SF
SRC Evans O-26-23-14CHZ - Wellbore #1 - Plan #1 (10-	800.0	800.0	22.6	19.2	6.699	CC, ES
SRC Evans O-26-23-14CHZ - Wellbore #1 - Plan #1 (10-	900.0	900.0	24.2	20.4	6.371	SF
SRC Evans O-26-23-14NHZ - Wellbore #1 - Plan #1 (10-	800.0	801.0	67.8	64.4	20.085	CC, ES
SRC Evans O-26-23-14NHZ - Wellbore #1 - Plan #1 (10-	1,000.0	1,000.8	74.1	69.9	17.647	SF
SRC Evans P-26-23-14NHZ - Wellbore #1 - Plan #1 (10-	200.0	199.0	67.4	66.7	100.280	CC, ES
SRC Evans P-26-23-14NHZ - Wellbore #1 - Plan #1 (10-	16,995.0	16,649.4	429.1	166.4	1.634	SF

Company:	Synergy Resources	Local Co-ordinate Reference:	Well SRC Evans P-26-23-14CHZ
Project:	SEC.26-T5N-R66W	TVD Reference:	WELL @ 4763.0ft (RKB - 15')
Reference Site:	SRC Evans Center Pad Sec.26-T5N-R66W	MD Reference:	WELL @ 4763.0ft (RKB - 15')
Site Error:	0.0ft	North Reference:	True
Reference Well:	SRC Evans P-26-23-14CHZ	Survey Calculation Method:	Minimum Curvature
Well Error:	0.0ft	Output errors are at	2.00 sigma
Reference Wellbore	Wellbore #1	Database:	Landmark
Reference Design:	Plan #1 (10-27-14)	Offset TVD Reference:	Offset Datum

Offset Design										Existing Wells Sec.26-T5N-R66W - Gilbert #2 (Exist) - Wellbore #1 - Wellbore #1				Offset Site Error:		0.0 ft
Survey Program: 7392-UNKNOWN														Offset Well Error:		0.0 ft
Reference		Offset		Semi Major Axis			Distance							Warning		
Measured Depth	Vertical Depth	Measured Depth	Vertical Depth	Reference	Offset	Highside Toolface	Offset Wellbore Centre		Between Centres	Between Ellipses	Minimum Separation	Separation Factor				
(ft)	(ft)	(ft)	(ft)	(ft)	(ft)	(°)	+N/-S (ft)	+E/-W (ft)	(ft)	(ft)	(ft)					
16,100.0	7,200.0	7,277.0	7,277.0	168.0	145.5	-90.00	9,214.5	277.4	710.0	396.5	313.50	2.265				
16,200.0	7,200.0	7,277.0	7,277.0	169.9	145.5	-90.00	9,214.5	277.4	610.0	294.6	315.41	1.934				
16,300.0	7,200.0	7,277.0	7,277.0	171.8	145.5	-90.00	9,214.5	277.4	510.1	192.7	317.32	1.607				
16,400.0	7,200.0	7,277.0	7,277.0	173.7	145.5	-90.00	9,214.5	277.4	410.1	90.8	319.23	1.285	Level 3			
16,500.0	7,200.0	7,277.0	7,277.0	175.6	145.5	-90.00	9,214.5	277.4	310.1	-11.0	321.15	0.966	Level 1			
16,600.0	7,200.0	7,277.0	7,277.0	177.6	145.5	-90.00	9,214.5	277.4	210.2	-112.9	323.06	0.651	Level 1			
16,700.0	7,200.0	7,277.0	7,277.0	179.5	145.5	-90.00	9,214.5	277.4	110.4	-214.6	324.97	0.340	Level 1			
16,800.0	7,200.0	7,277.0	7,277.0	181.4	145.5	-90.00	9,214.5	277.4	14.0	-312.8	326.88	0.043	Level 1			
16,812.5	7,200.0	7,277.0	7,277.0	181.6	145.5	-90.00	9,214.5	277.4	10.2	-316.9	327.12	0.031	Level 1, CC, ES, SF			
16,900.0	7,200.0	7,277.0	7,277.0	183.3	145.5	-90.00	9,214.5	277.4	90.6	-238.2	328.79	0.275	Level 1			
16,995.0	7,200.0	7,277.0	7,277.0	185.1	145.5	-90.00	9,214.5	277.4	185.3	-145.3	330.61	0.561	Level 1			

Company:	Synergy Resources	Local Co-ordinate Reference:	Well SRC Evans P-26-23-14CHZ
Project:	SEC.26-T5N-R66W	TVD Reference:	WELL @ 4763.0ft (RKB - 15')
Reference Site:	SRC Evans Center Pad Sec.26-T5N-R66W	MD Reference:	WELL @ 4763.0ft (RKB - 15')
Site Error:	0.0ft	North Reference:	True
Reference Well:	SRC Evans P-26-23-14CHZ	Survey Calculation Method:	Minimum Curvature
Well Error:	0.0ft	Output errors are at	2.00 sigma
Reference Wellbore	Wellbore #1	Database:	Landmark
Reference Design:	Plan #1 (10-27-14)	Offset TVD Reference:	Offset Datum

Offset Design Existing Wells Sec.26-T5N-R66W - Mantel J 23-15 (Exist) - Wellbore #1 - Wellbore #1													Offset Site Error:	0.0 ft
Survey Program: 7395-UNKNOWN													Offset Well Error:	0.0 ft
Reference		Offset		Semi Major Axis			Distance						Warning	
Measured Depth (ft)	Vertical Depth (ft)	Measured Depth (ft)	Vertical Depth (ft)	Reference (ft)	Offset (ft)	Highside Toolface (°)	Offset Wellbore Centre +N/-S (ft)	+E/-W (ft)	Between Centres (ft)	Between Ellipses (ft)	Minimum Separation (ft)	Separation Factor		
9,500.0	7,200.0	7,227.0	7,227.0	44.1	144.5	-90.00	2,649.6	113.1	769.1	580.6	188.53	4.079		
9,600.0	7,200.0	7,227.0	7,227.0	45.9	144.5	-90.00	2,649.6	113.1	672.6	482.3	190.30	3.535		
9,700.0	7,200.0	7,227.0	7,227.0	47.6	144.5	-90.00	2,649.6	113.1	577.4	385.3	192.07	3.006		
9,800.0	7,200.0	7,227.0	7,227.0	49.4	144.5	-90.00	2,649.6	113.1	484.0	290.1	193.86	2.497		
9,900.0	7,200.0	7,227.0	7,227.0	51.2	144.5	-90.00	2,649.6	113.1	393.9	198.2	195.65	2.013		
10,000.0	7,200.0	7,227.0	7,227.0	53.0	144.5	-90.00	2,649.6	113.1	309.9	112.5	197.46	1.570		
10,100.0	7,200.0	7,227.0	7,227.0	54.8	144.5	-90.00	2,649.6	113.1	238.7	39.4	199.27	1.198	Level 2	
10,200.0	7,200.0	7,227.0	7,227.0	56.7	144.5	-90.00	2,649.6	113.1	194.6	-6.5	201.09	0.968	Level 1	
10,245.5	7,200.0	7,227.0	7,227.0	57.5	144.5	-90.00	2,649.6	113.1	189.2	-12.7	201.92	0.937	Level 1, CC, ES, SF	
10,300.0	7,200.0	7,227.0	7,227.0	58.5	144.5	-90.00	2,649.6	113.1	196.9	-6.0	202.91	0.971	Level 1	
10,400.0	7,200.0	7,227.0	7,227.0	60.3	144.5	-90.00	2,649.6	113.1	244.3	39.6	204.74	1.193	Level 2	
10,500.0	7,200.0	7,227.0	7,227.0	62.1	144.5	-90.00	2,649.6	113.1	317.2	110.6	206.58	1.535		
10,600.0	7,200.0	7,227.0	7,227.0	64.0	144.5	-90.00	2,649.6	113.1	401.9	193.5	208.42	1.928		
10,700.0	7,200.0	7,227.0	7,227.0	65.8	144.5	-90.00	2,649.6	113.1	492.4	282.1	210.27	2.342		
10,800.0	7,200.0	7,227.0	7,227.0	67.7	144.5	-90.00	2,649.6	113.1	585.9	373.8	212.12	2.762		
10,900.0	7,200.0	7,227.0	7,227.0	69.5	144.5	-90.00	2,649.6	113.1	681.3	467.4	213.98	3.184		
11,000.0	7,200.0	7,227.0	7,227.0	71.4	144.5	-90.00	2,649.6	113.1	777.9	562.1	215.84	3.604		

Company:	Synergy Resources	Local Co-ordinate Reference:	Well SRC Evans P-26-23-14CHZ
Project:	SEC.26-T5N-R66W	TVD Reference:	WELL @ 4763.0ft (RKB - 15')
Reference Site:	SRC Evans Center Pad Sec.26-T5N-R66W	MD Reference:	WELL @ 4763.0ft (RKB - 15')
Site Error:	0.0ft	North Reference:	True
Reference Well:	SRC Evans P-26-23-14CHZ	Survey Calculation Method:	Minimum Curvature
Well Error:	0.0ft	Output errors are at	2.00 sigma
Reference Wellbore	Wellbore #1	Database:	Landmark
Reference Design:	Plan #1 (10-27-14)	Offset TVD Reference:	Offset Datum

Offset Design Existing Wells Sec.26-T5N-R66W - Mantel J23-10 (Exist) - Wellbore #1 - Wellbore #1												Offset Site Error:	0.0 ft
Survey Program: 7431-UNKNOWN												Offset Well Error:	0.0 ft
Reference	Offset	Semi Major Axis		Distance									
Measured Depth (ft)	Vertical Depth (ft)	Measured Depth (ft)	Vertical Depth (ft)	Reference (ft)	Offset (ft)	Highside Toolface (°)	Offset Wellbore Centre +N/-S (ft)	+E/-W (ft)	Between Centres (ft)	Between Ellipses (ft)	Minimum Separation (ft)	Separation Factor	Warning
10,800.0	7,200.0	7,248.0	7,248.0	67.7	145.0	-90.00	3,891.9	99.2	716.4	503.8	212.54	3.370	
10,900.0	7,200.0	7,248.0	7,248.0	69.5	145.0	-90.00	3,891.9	99.2	621.0	406.6	214.40	2.896	
11,000.0	7,200.0	7,248.0	7,248.0	71.4	145.0	-90.00	3,891.9	99.2	527.3	311.1	216.26	2.438	
11,100.0	7,200.0	7,248.0	7,248.0	73.2	145.0	-90.00	3,891.9	99.2	436.5	218.4	218.12	2.001	
11,200.0	7,200.0	7,248.0	7,248.0	75.1	145.0	-90.00	3,891.9	99.2	350.6	130.7	219.98	1.594	
11,300.0	7,200.0	7,248.0	7,248.0	77.0	145.0	-90.00	3,891.9	99.2	274.6	52.7	221.85	1.238	Level 2
11,400.0	7,200.0	7,248.0	7,248.0	78.8	145.0	-90.00	3,891.9	99.2	218.7	-5.0	223.72	0.978	Level 1
11,487.8	7,200.0	7,248.0	7,248.0	80.5	145.0	-90.00	3,891.9	99.2	200.3	-25.0	225.36	0.889	Level 1, CC, ES, SF
11,500.0	7,200.0	7,248.0	7,248.0	80.7	145.0	-90.00	3,891.9	99.2	200.7	-24.9	225.59	0.890	Level 1
11,600.0	7,200.0	7,248.0	7,248.0	82.6	145.0	-90.00	3,891.9	99.2	229.6	2.1	227.47	1.009	Level 2
11,700.0	7,200.0	7,248.0	7,248.0	84.5	145.0	-90.00	3,891.9	99.2	291.8	62.5	229.34	1.272	Level 3
11,800.0	7,200.0	7,248.0	7,248.0	86.3	145.0	-90.00	3,891.9	99.2	370.9	139.7	231.22	1.604	
11,900.0	7,200.0	7,248.0	7,248.0	88.2	145.0	-90.00	3,891.9	99.2	458.3	225.2	233.10	1.966	
12,000.0	7,200.0	7,248.0	7,248.0	90.1	145.0	-90.00	3,891.9	99.2	550.0	315.0	234.98	2.341	
12,100.0	7,200.0	7,248.0	7,248.0	92.0	145.0	-90.00	3,891.9	99.2	644.1	407.3	236.87	2.719	
12,200.0	7,200.0	7,248.0	7,248.0	93.9	145.0	-90.00	3,891.9	99.2	739.8	501.1	238.75	3.099	

Company:	Synergy Resources	Local Co-ordinate Reference:	Well SRC Evans P-26-23-14CHZ
Project:	SEC.26-T5N-R66W	TVD Reference:	WELL @ 4763.0ft (RKB - 15')
Reference Site:	SRC Evans Center Pad Sec.26-T5N-R66W	MD Reference:	WELL @ 4763.0ft (RKB - 15')
Site Error:	0.0ft	North Reference:	True
Reference Well:	SRC Evans P-26-23-14CHZ	Survey Calculation Method:	Minimum Curvature
Well Error:	0.0ft	Output errors are at	2.00 sigma
Reference Wellbore	Wellbore #1	Database:	Landmark
Reference Design:	Plan #1 (10-27-14)	Offset TVD Reference:	Offset Datum

Offset Design Existing Wells Sec.26-T5N-R66W - Rhoadarmer 1-26 (Exist) - Wellbore #1 - Wellbore #1												Offset Site Error:	0.0ft
Survey Program: 7813-UNKNOWN												Offset Well Error:	0.0ft
Reference		Offset		Semi Major Axis			Distance						
Measured Depth (ft)	Vertical Depth (ft)	Measured Depth (ft)	Vertical Depth (ft)	Reference (ft)	Offset (ft)	Highside Toolface (°)	Offset Wellbore Centre +N/-S (ft)	+E/-W (ft)	Between Centres (ft)	Between Ellipses (ft)	Minimum Separation (ft)	Separation Factor	Warning
0.0	0.0	15.0	15.0	0.0	0.3	41.59	529.3	469.8	707.7	707.4	0.30	2,357.546	
100.0	100.0	115.0	115.0	0.1	2.3	41.59	529.3	469.8	707.7	705.3	2.41	293.352	
200.0	200.0	215.0	215.0	0.3	4.3	41.59	529.3	469.8	707.7	703.1	4.64	152.616	
300.0	300.0	315.0	315.0	0.6	6.3	41.59	529.3	469.8	707.7	700.9	6.86	103.137	
400.0	400.0	415.0	415.0	0.8	8.3	41.59	529.3	469.8	707.7	698.6	9.09	77.885	
500.0	500.0	515.0	515.0	1.0	10.3	41.59	529.3	469.8	707.7	696.4	11.31	62.567	
600.0	600.0	615.0	615.0	1.2	12.3	41.59	529.3	469.8	707.7	694.2	13.54	52.284	
700.0	700.0	715.0	715.0	1.5	14.3	41.59	529.3	469.8	707.7	692.0	15.76	44.904	
800.0	800.0	815.0	815.0	1.7	16.3	41.59	529.3	469.8	707.7	689.7	17.99	39.349	
900.0	900.0	915.0	915.0	1.9	18.3	-113.14	529.3	469.8	708.4	688.2	20.18	35.102	
1,000.0	999.8	1,014.8	1,014.8	2.1	20.3	-113.49	529.3	469.8	710.5	688.1	22.35	31.782	
1,100.0	1,099.5	1,114.5	1,114.5	2.3	22.3	-114.07	529.3	469.8	714.0	689.5	24.53	29.103	
1,203.7	1,202.4	1,217.4	1,217.4	2.5	24.3	-114.89	529.3	469.8	719.3	692.5	26.80	26.837	
1,300.0	1,297.7	1,312.7	1,312.7	2.8	26.3	-115.85	529.3	469.8	725.2	696.2	28.94	25.054	
1,400.0	1,396.7	1,411.7	1,411.7	3.0	28.2	-116.84	529.3	469.8	731.4	700.3	31.18	23.458	
1,500.0	1,495.7	1,510.7	1,510.7	3.3	30.2	-117.80	529.3	469.8	737.9	704.5	33.43	22.075	
1,600.0	1,594.7	1,609.7	1,609.7	3.6	32.2	-118.75	529.3	469.8	744.6	709.0	35.68	20.869	
1,700.0	1,693.7	1,708.7	1,708.7	3.9	34.2	-119.68	529.3	469.8	751.6	713.6	37.94	19.809	
1,800.0	1,792.8	1,807.8	1,807.8	4.3	36.2	-120.60	529.3	469.8	758.7	718.5	40.20	18.872	
1,900.0	1,891.8	1,906.8	1,906.8	4.6	38.1	-121.49	529.3	469.8	766.0	723.5	42.46	18.038	
2,000.0	1,990.8	2,005.8	2,005.8	4.9	40.1	-122.38	529.3	469.8	773.4	728.7	44.73	17.293	
2,100.0	2,089.8	2,104.8	2,104.8	5.3	42.1	-123.24	529.3	469.8	781.1	734.1	46.99	16.623	
2,200.0	2,188.8	2,203.8	2,203.8	5.6	44.1	-124.09	529.3	469.8	788.9	739.7	49.25	16.019	
2,300.0	2,287.8	2,302.8	2,302.8	5.9	46.1	-124.92	529.3	469.8	797.0	745.4	51.51	15.471	
7,350.0	7,134.6	7,149.6	7,149.6	18.3	143.0	26.98	529.3	469.8	782.0	685.6	96.41	8.111	
7,400.0	7,153.9	7,168.9	7,168.9	18.2	143.4	32.64	529.3	469.8	736.9	635.5	101.45	7.264	
7,450.0	7,169.9	7,184.9	7,184.9	18.2	143.7	40.15	529.3	469.8	690.8	578.8	112.04	6.166	
7,500.0	7,182.5	7,197.5	7,197.5	18.2	144.0	49.93	529.3	469.8	643.9	516.4	127.56	5.048	
7,550.0	7,191.8	7,206.8	7,206.8	18.3	144.1	61.96	529.3	469.8	596.5	451.9	144.62	4.125	
7,600.0	7,197.6	7,212.6	7,212.6	18.4	144.3	75.26	529.3	469.8	548.9	391.3	157.61	3.483	
7,650.0	7,199.9	7,214.9	7,214.9	18.5	144.3	88.02	529.3	469.8	501.4	338.7	162.71	3.082	
7,658.5	7,200.0	7,215.0	7,215.0	18.6	144.3	90.00	529.3	469.8	493.4	330.6	162.81	3.031	
7,700.0	7,200.0	7,215.0	7,215.0	18.8	144.3	90.00	529.3	469.8	454.4	291.4	163.04	2.787	
7,800.0	7,200.0	7,215.0	7,215.0	19.4	144.3	90.00	529.3	469.8	362.8	199.1	163.70	2.216	
7,900.0	7,200.0	7,215.0	7,215.0	20.2	144.3	90.00	529.3	469.8	277.1	112.5	164.52	1.684	
8,000.0	7,200.0	7,215.0	7,215.0	21.2	144.3	90.00	529.3	469.8	204.7	39.2	165.49	1.237	Level 2
8,100.0	7,200.0	7,215.0	7,215.0	22.3	144.3	90.00	529.3	469.8	164.4	-2.2	166.58	0.987	Level 1
8,124.4	7,200.0	7,215.0	7,215.0	22.6	144.3	90.00	529.3	469.8	162.6	-4.3	166.87	0.974	Level 1, CC, ES, SF
8,200.0	7,200.0	7,215.0	7,215.0	23.5	144.3	90.00	529.3	469.8	179.3	11.5	167.78	1.069	Level 2
8,300.0	7,200.0	7,215.0	7,215.0	24.8	144.3	90.00	529.3	469.8	239.3	70.3	169.07	1.416	Level 3
8,400.0	7,200.0	7,215.0	7,215.0	26.2	144.3	90.00	529.3	469.8	320.0	149.6	170.43	1.878	
8,500.0	7,200.0	7,215.0	7,215.0	27.7	144.3	90.00	529.3	469.8	409.3	237.4	171.87	2.382	
8,600.0	7,200.0	7,215.0	7,215.0	29.2	144.3	90.00	529.3	469.8	502.7	329.3	173.36	2.900	
8,700.0	7,200.0	7,215.0	7,215.0	30.7	144.3	90.00	529.3	469.8	598.2	423.3	174.89	3.420	
8,800.0	7,200.0	7,215.0	7,215.0	32.3	144.3	90.00	529.3	469.8	694.9	518.5	176.47	3.938	
8,900.0	7,200.0	7,215.0	7,215.0	33.9	144.3	90.00	529.3	469.8	792.5	614.4	178.09	4.450	

Company:	Synergy Resources	Local Co-ordinate Reference:	Well SRC Evans P-26-23-14CHZ
Project:	SEC.26-T5N-R66W	TVD Reference:	WELL @ 4763.0ft (RKB - 15')
Reference Site:	SRC Evans Center Pad Sec.26-T5N-R66W	MD Reference:	WELL @ 4763.0ft (RKB - 15')
Site Error:	0.0ft	North Reference:	True
Reference Well:	SRC Evans P-26-23-14CHZ	Survey Calculation Method:	Minimum Curvature
Well Error:	0.0ft	Output errors are at	2.00 sigma
Reference Wellbore	Wellbore #1	Database:	Landmark
Reference Design:	Plan #1 (10-27-14)	Offset TVD Reference:	Offset Datum

Offset Design Existing Wells Sec.26-T5N-R66W - Rhoadarmer 1-26B (Exist) - Wellbore #1 - Wellbore #1													Offset Site Error:	0.0 ft
Survey Program: 7798-UNKNOWN													Offset Well Error:	0.0 ft
Reference		Offset		Semi Major Axis			Distance							Warning
Measured Depth (ft)	Vertical Depth (ft)	Measured Depth (ft)	Vertical Depth (ft)	Reference (ft)	Offset (ft)	Highside Toolface (°)	Offset Wellbore Centre +N/-S (ft)	+E/-W (ft)	Between Centres (ft)	Between Ellipses (ft)	Minimum Separation (ft)	Separation Factor		
0.0	0.0	0.0	0.0	0.0	0.0	-155.69	-243.0	-109.8	267.4					
100.0	100.0	80.0	80.0	0.1	1.6	-155.69	-243.0	-109.8	266.6	264.9	1.71	155.699		
200.0	200.0	180.0	180.0	0.3	3.6	-155.69	-243.0	-109.8	266.6	262.7	3.94	67.723		
300.0	300.0	280.0	280.0	0.6	5.6	-155.69	-243.0	-109.8	266.6	260.5	6.16	43.272		
400.0	400.0	380.0	380.0	0.8	7.6	-155.69	-243.0	-109.8	266.6	258.3	8.39	31.793		
500.0	500.0	480.0	480.0	1.0	9.6	-155.69	-243.0	-109.8	266.6	256.0	10.61	25.128		
600.0	600.0	580.0	580.0	1.2	11.6	-155.69	-243.0	-109.8	266.6	253.8	12.84	20.773		
700.0	700.0	680.0	680.0	1.5	13.6	-155.69	-243.0	-109.8	266.6	251.6	15.06	17.704		
800.0	800.0	780.0	780.0	1.7	15.6	-155.69	-243.0	-109.8	266.6	249.4	17.29	15.426		
900.0	900.0	880.0	880.0	1.9	17.6	50.00	-243.0	-109.8	265.5	246.0	19.48	13.631		
1,000.0	999.8	979.8	979.8	2.1	19.6	50.93	-243.0	-109.8	262.2	240.5	21.64	12.114		
1,100.0	1,099.5	1,079.5	1,079.5	2.3	21.6	52.52	-243.0	-109.8	256.8	233.0	23.81	10.786		
1,203.7	1,202.4	1,182.4	1,182.4	2.5	23.6	54.95	-243.0	-109.8	249.2	223.2	26.06	9.563		
1,300.0	1,297.7	1,277.7	1,277.7	2.8	25.6	57.56	-243.0	-109.8	241.7	213.4	28.21	8.566		
1,400.0	1,396.7	1,376.7	1,376.7	3.0	27.5	60.44	-243.0	-109.8	234.4	203.9	30.46	7.693		
1,500.0	1,495.7	1,475.7	1,475.7	3.3	29.5	63.49	-243.0	-109.8	227.7	195.0	32.74	6.955		
1,600.0	1,594.7	1,574.7	1,574.7	3.6	31.5	66.71	-243.0	-109.8	221.7	186.7	35.03	6.330		
1,700.0	1,693.7	1,673.7	1,673.7	3.9	33.5	70.10	-243.0	-109.8	216.5	179.2	37.34	5.799		
1,800.0	1,792.8	1,772.8	1,772.8	4.3	35.5	73.63	-243.0	-109.8	212.1	172.5	39.65	5.349		
1,900.0	1,891.8	1,871.8	1,871.8	4.6	37.4	77.30	-243.0	-109.8	208.6	166.6	41.98	4.968		
2,000.0	1,990.8	1,970.8	1,970.8	4.9	39.4	81.08	-243.0	-109.8	205.9	161.6	44.31	4.647		
2,100.0	2,089.8	2,069.8	2,069.8	5.3	41.4	84.94	-243.0	-109.8	204.2	157.5	46.64	4.378		
2,200.0	2,188.8	2,168.8	2,168.8	5.6	43.4	88.85	-243.0	-109.8	203.4	154.4	48.96	4.154		
2,229.4	2,217.9	2,197.9	2,197.9	5.7	44.0	90.00	-243.0	-109.8	203.4	153.7	49.64	4.096 CC		
2,300.0	2,287.8	2,267.8	2,267.8	5.9	45.4	92.76	-243.0	-109.8	203.6	152.3	51.28	3.971		
2,400.0	2,386.8	2,366.8	2,366.8	6.3	47.3	96.65	-243.0	-109.8	204.8	151.2	53.58	3.822		
2,500.0	2,485.8	2,465.8	2,465.8	6.6	49.3	100.48	-243.0	-109.8	206.9	151.0	55.87	3.703 ES		
2,600.0	2,584.8	2,564.8	2,564.8	6.9	51.3	104.22	-243.0	-109.8	209.9	151.8	58.14	3.610		
2,700.0	2,683.8	2,663.8	2,663.8	7.3	53.3	107.84	-243.0	-109.8	213.8	153.4	60.40	3.540		
2,800.0	2,782.8	2,762.8	2,762.8	7.6	55.3	111.31	-243.0	-109.8	218.6	155.9	62.64	3.489		
2,900.0	2,881.8	2,861.8	2,861.8	8.0	57.2	114.63	-243.0	-109.8	224.1	159.2	64.87	3.455		
3,000.0	2,980.9	2,960.9	2,960.9	8.3	59.2	117.79	-243.0	-109.8	230.4	163.3	67.08	3.434		
3,100.0	3,079.9	3,059.9	3,059.9	8.7	61.2	120.77	-243.0	-109.8	237.3	168.0	69.28	3.425		
3,200.0	3,178.9	3,158.9	3,158.9	9.0	63.2	123.57	-243.0	-109.8	244.8	173.3	71.47	3.425		
3,300.0	3,277.9	3,257.9	3,257.9	9.4	65.2	126.21	-243.0	-109.8	252.9	179.3	73.66	3.434		
3,400.0	3,376.9	3,356.9	3,356.9	9.7	67.1	128.68	-243.0	-109.8	261.5	185.7	75.83	3.449		
3,500.0	3,475.9	3,455.9	3,455.9	10.1	69.1	130.99	-243.0	-109.8	270.6	192.6	78.00	3.469		
3,600.0	3,574.9	3,554.9	3,554.9	10.4	71.1	133.15	-243.0	-109.8	280.0	199.9	80.17	3.493		
3,700.0	3,673.9	3,653.9	3,653.9	10.8	73.1	135.16	-243.0	-109.8	289.9	207.5	82.34	3.520		
3,800.0	3,772.9	3,752.9	3,752.9	11.1	75.1	137.04	-243.0	-109.8	300.0	215.5	84.50	3.551		
3,900.0	3,871.9	3,851.9	3,851.9	11.5	77.0	138.80	-243.0	-109.8	310.5	223.8	86.66	3.583		
4,000.0	3,970.9	3,950.9	3,950.9	11.8	79.0	140.45	-243.0	-109.8	321.2	232.4	88.82	3.617		
4,100.0	4,070.0	4,050.0	4,050.0	12.2	81.0	141.98	-243.0	-109.8	332.2	241.3	90.99	3.652		
4,200.0	4,169.0	4,149.0	4,149.0	12.5	83.0	143.42	-243.0	-109.8	343.5	250.3	93.15	3.687		
4,300.0	4,268.0	4,248.0	4,248.0	12.9	85.0	144.77	-243.0	-109.8	354.9	259.6	95.31	3.723		
4,400.0	4,367.0	4,347.0	4,347.0	13.2	86.9	146.03	-243.0	-109.8	366.5	269.0	97.48	3.760		
4,500.0	4,466.0	4,446.0	4,446.0	13.6	88.9	147.22	-243.0	-109.8	378.2	278.6	99.65	3.796		
4,600.0	4,565.0	4,545.0	4,545.0	13.9	90.9	148.33	-243.0	-109.8	390.2	288.3	101.81	3.832		
4,700.0	4,664.0	4,644.0	4,644.0	14.3	92.9	149.38	-243.0	-109.8	402.2	298.2	103.98	3.868		
4,800.0	4,763.0	4,743.0	4,743.0	14.6	94.9	150.37	-243.0	-109.8	414.4	308.2	106.15	3.904		
4,900.0	4,862.0	4,842.0	4,842.0	15.0	96.8	151.30	-243.0	-109.8	426.7	318.4	108.32	3.939		
5,000.0	4,961.0	4,941.0	4,941.0	15.3	98.8	152.18	-243.0	-109.8	439.1	328.6	110.50	3.974		

CC - Min centre to center distance or convergent point, SF - min separation factor, ES - min ellipse separation

Company:	Synergy Resources	Local Co-ordinate Reference:	Well SRC Evans P-26-23-14CHZ
Project:	SEC.26-T5N-R66W	TVD Reference:	WELL @ 4763.0ft (RKB - 15')
Reference Site:	SRC Evans Center Pad Sec.26-T5N-R66W	MD Reference:	WELL @ 4763.0ft (RKB - 15')
Site Error:	0.0ft	North Reference:	True
Reference Well:	SRC Evans P-26-23-14CHZ	Survey Calculation Method:	Minimum Curvature
Well Error:	0.0ft	Output errors are at	2.00 sigma
Reference Wellbore	Wellbore #1	Database:	Landmark
Reference Design:	Plan #1 (10-27-14)	Offset TVD Reference:	Offset Datum

Offset Design Existing Wells Sec.26-T5N-R66W - Rhoadarmer 1-26B (Exist) - Wellbore #1 - Wellbore #1													Offset Site Error:	0.0 ft
Survey Program: 7798-UNKNOWN													Offset Well Error:	0.0 ft
Reference		Offset		Semi Major Axis			Distance							Warning
Measured Depth (ft)	Vertical Depth (ft)	Measured Depth (ft)	Vertical Depth (ft)	Reference (ft)	Offset (ft)	Highside Toolface (°)	Offset Wellbore Centre +N/-S (ft)	+E/-W (ft)	Between Centres (ft)	Between Ellipses (ft)	Minimum Separation (ft)	Separation Factor		
5,100.0	5,060.0	5,040.0	5,040.0	15.7	100.8	153.01	-243.0	-109.8	451.6	338.9	112.67	4.008		
5,200.0	5,159.0	5,139.0	5,139.0	16.0	102.8	153.79	-243.0	-109.8	464.2	349.3	114.84	4.042		
5,300.0	5,258.1	5,238.1	5,238.1	16.4	104.8	154.53	-243.0	-109.8	476.8	359.8	117.02	4.075		
5,400.0	5,357.1	5,337.1	5,337.1	16.7	106.7	155.24	-243.0	-109.8	489.6	370.4	119.20	4.107		
5,500.0	5,456.1	5,436.1	5,436.1	17.1	108.7	155.91	-243.0	-109.8	502.4	381.0	121.38	4.139		
5,600.0	5,555.1	5,535.1	5,535.1	17.4	110.7	156.55	-243.0	-109.8	515.3	391.7	123.56	4.170		
5,700.0	5,654.1	5,634.1	5,634.1	17.8	112.7	157.15	-243.0	-109.8	528.2	402.5	125.74	4.201		
5,800.0	5,753.1	5,733.1	5,733.1	18.2	114.7	157.73	-243.0	-109.8	541.2	413.3	127.92	4.231		
5,900.0	5,852.1	5,832.1	5,832.1	18.5	116.6	158.28	-243.0	-109.8	554.2	424.1	130.10	4.260		
5,946.0	5,897.6	5,877.6	5,877.6	18.7	117.6	158.52	-243.0	-109.8	560.2	429.1	131.11	4.273		
6,000.0	5,951.2	5,931.2	5,931.2	18.8	118.6	158.83	-243.0	-109.8	566.8	434.3	132.53	4.277		
6,100.0	6,050.6	6,030.6	6,030.6	19.0	120.6	159.28	-243.0	-109.8	576.6	441.6	135.04	4.270		
6,200.0	6,150.4	6,130.4	6,130.4	19.2	122.6	159.56	-243.0	-109.8	583.1	445.7	137.44	4.243		
6,300.0	6,250.3	6,230.3	6,230.3	19.4	124.6	159.71	-243.0	-109.8	586.4	446.7	139.70	4.197		
6,349.7	6,300.0	6,280.0	6,280.0	19.5	125.6	-45.66	-243.0	-109.8	586.8	446.0	140.77	4.168		
6,400.0	6,350.3	6,330.3	6,330.3	19.5	126.6	-45.66	-243.0	-109.8	586.8	444.9	141.87	4.136		
6,500.0	6,450.3	6,430.3	6,430.3	19.7	128.6	-45.66	-243.0	-109.8	586.8	442.8	144.03	4.074		
6,533.5	6,483.8	6,463.8	6,463.8	19.7	129.3	-45.66	-243.0	-109.8	586.8	442.0	144.75	4.054		
6,550.0	6,500.3	6,480.3	6,480.3	19.7	129.6	-45.55	-243.0	-109.8	586.7	441.6	145.08	4.044		
6,600.0	6,550.2	6,530.2	6,530.2	19.8	130.6	-45.87	-243.0	-109.8	584.6	438.8	145.83	4.009		
6,650.0	6,599.8	6,579.8	6,579.8	19.8	131.6	-46.58	-243.0	-109.8	580.2	433.9	146.28	3.966		
6,700.0	6,648.8	6,628.8	6,628.8	19.8	132.6	-47.68	-243.0	-109.8	573.5	427.0	146.48	3.915		
6,750.0	6,697.0	6,677.0	6,677.0	19.7	133.5	-49.20	-243.0	-109.8	564.5	418.0	146.52	3.853		
6,800.0	6,744.2	6,724.2	6,724.2	19.6	134.5	-51.15	-243.0	-109.8	553.6	407.0	146.52	3.778		
6,850.0	6,790.1	6,770.1	6,770.1	19.6	135.4	-53.54	-243.0	-109.8	540.8	394.2	146.62	3.688		
6,900.0	6,834.5	6,814.5	6,814.5	19.4	136.3	-56.38	-243.0	-109.8	526.6	379.6	146.99	3.582		
6,950.0	6,877.2	6,857.2	6,857.2	19.3	137.1	-59.66	-243.0	-109.8	511.3	363.5	147.77	3.460		
7,000.0	6,918.0	6,898.0	6,898.0	19.2	138.0	-63.34	-243.0	-109.8	495.2	346.2	149.02	3.323		
7,050.0	6,956.7	6,936.7	6,936.7	19.1	138.7	-67.34	-243.0	-109.8	479.1	328.3	150.74	3.178		
7,100.0	6,993.1	6,973.1	6,973.1	18.9	139.5	-71.57	-243.0	-109.8	463.4	310.6	152.77	3.033		
7,150.0	7,026.9	7,006.9	7,006.9	18.8	140.1	-75.87	-243.0	-109.8	448.9	294.0	154.88	2.898		
7,200.0	7,058.2	7,038.2	7,038.2	18.6	140.8	-80.07	-243.0	-109.8	436.3	279.5	156.82	2.782		
7,250.0	7,086.6	7,066.6	7,066.6	18.5	141.3	-84.00	-243.0	-109.8	426.6	268.2	158.38	2.694		
7,300.0	7,112.1	7,092.1	7,092.1	18.4	141.8	-87.47	-243.0	-109.8	420.5	261.1	159.45	2.637		
7,343.3	7,131.7	7,111.7	7,111.7	18.3	142.2	-90.00	-243.0	-109.8	418.7	258.7	160.02	2.617		
7,350.0	7,134.6	7,114.6	7,114.6	18.3	142.3	-90.35	-243.0	-109.8	418.8	258.7	160.08	2.616 SF		
7,400.0	7,153.9	7,133.9	7,133.9	18.2	142.7	-92.52	-243.0	-109.8	422.0	261.6	160.40	2.631		
7,450.0	7,169.9	7,149.9	7,149.9	18.2	143.0	-93.90	-243.0	-109.8	430.4	269.8	160.60	2.680		
7,500.0	7,182.5	7,162.5	7,162.5	18.2	143.3	-94.43	-243.0	-109.8	444.1	283.3	160.83	2.761		
7,550.0	7,191.8	7,171.8	7,171.8	18.3	143.4	-94.06	-243.0	-109.8	462.8	301.6	161.20	2.871		
7,600.0	7,197.6	7,177.6	7,177.6	18.4	143.6	-92.75	-243.0	-109.8	486.0	324.3	161.68	3.006		
7,650.0	7,199.9	7,179.9	7,179.9	18.5	143.6	-90.48	-243.0	-109.8	513.2	351.1	162.07	3.166		
7,658.5	7,200.0	7,180.0	7,180.0	18.6	143.6	-90.00	-243.0	-109.8	518.1	356.0	162.11	3.196		
7,700.0	7,200.0	7,180.0	7,180.0	18.8	143.6	-90.00	-243.0	-109.8	543.6	381.3	162.34	3.349		
7,800.0	7,200.0	7,180.0	7,180.0	19.4	143.6	-90.00	-243.0	-109.8	612.2	449.2	163.00	3.756		
7,900.0	7,200.0	7,180.0	7,180.0	20.2	143.6	-90.00	-243.0	-109.8	688.6	524.8	163.82	4.203		
8,000.0	7,200.0	7,180.0	7,180.0	21.2	143.6	-90.00	-243.0	-109.8	770.4	605.6	164.79	4.675		

Company:	Synergy Resources	Local Co-ordinate Reference:	Well SRC Evans P-26-23-14CHZ
Project:	SEC.26-T5N-R66W	TVD Reference:	WELL @ 4763.0ft (RKB - 15')
Reference Site:	SRC Evans Center Pad Sec.26-T5N-R66W	MD Reference:	WELL @ 4763.0ft (RKB - 15')
Site Error:	0.0ft	North Reference:	True
Reference Well:	SRC Evans P-26-23-14CHZ	Survey Calculation Method:	Minimum Curvature
Well Error:	0.0ft	Output errors are at	2.00 sigma
Reference Wellbore	Wellbore #1	Database:	Landmark
Reference Design:	Plan #1 (10-27-14)	Offset TVD Reference:	Offset Datum

Offset Design Existing Wells Sec.26-T5N-R66W - Rhoadarmer 2-26 (Exist) - Wellbore #1 - Wellbore #1												Offset Site Error:	0.0 ft
Survey Program: 7352-UNKNOWN												Offset Well Error:	0.0 ft
Reference	Offset	Semi Major Axis		Distance									
Measured Depth (ft)	Vertical Depth (ft)	Measured Depth (ft)	Vertical Depth (ft)	Reference (ft)	Offset (ft)	Highside Toolface (°)	Offset Wellbore Centre +N/-S (ft)	+E/-W (ft)	Between Centres (ft)	Between Ellipses (ft)	Minimum Separation (ft)	Separation Factor	Warning
8,600.0	7,200.0	7,210.0	7,210.0	29.2	144.2	-90.00	1,556.7	-243.5	779.0	605.8	173.26	4.496	
8,700.0	7,200.0	7,210.0	7,210.0	30.7	144.2	-90.00	1,556.7	-243.5	711.5	536.7	174.79	4.070	
8,800.0	7,200.0	7,210.0	7,210.0	32.3	144.2	-90.00	1,556.7	-243.5	652.3	476.0	176.37	3.699	
8,900.0	7,200.0	7,210.0	7,210.0	33.9	144.2	-90.00	1,556.7	-243.5	604.0	426.1	177.99	3.394	
9,000.0	7,200.0	7,210.0	7,210.0	35.6	144.2	-90.00	1,556.7	-243.5	569.4	389.8	179.63	3.170	
9,100.0	7,200.0	7,210.0	7,210.0	37.2	144.2	-90.00	1,556.7	-243.5	550.9	369.6	181.30	3.039	
9,153.4	7,200.0	7,210.0	7,210.0	38.1	144.2	-90.00	1,556.7	-243.5	548.4	366.1	182.21	3.010 CC, ES	
9,200.0	7,200.0	7,210.0	7,210.0	38.9	144.2	-90.00	1,556.7	-243.5	550.3	367.3	183.00	3.007 SF	
9,300.0	7,200.0	7,210.0	7,210.0	40.6	144.2	-90.00	1,556.7	-243.5	567.6	382.9	184.71	3.073	
9,400.0	7,200.0	7,210.0	7,210.0	42.4	144.2	-90.00	1,556.7	-243.5	601.3	414.8	186.44	3.225	
9,500.0	7,200.0	7,210.0	7,210.0	44.1	144.2	-90.00	1,556.7	-243.5	648.7	460.5	188.19	3.447	
9,600.0	7,200.0	7,210.0	7,210.0	45.9	144.2	-90.00	1,556.7	-243.5	707.2	517.3	189.96	3.723	
9,700.0	7,200.0	7,210.0	7,210.0	47.6	144.2	-90.00	1,556.7	-243.5	774.3	582.6	191.73	4.038	

Company:	Synergy Resources	Local Co-ordinate Reference:	Well SRC Evans P-26-23-14CHZ
Project:	SEC.26-T5N-R66W	TVD Reference:	WELL @ 4763.0ft (RKB - 15')
Reference Site:	SRC Evans Center Pad Sec.26-T5N-R66W	MD Reference:	WELL @ 4763.0ft (RKB - 15')
Site Error:	0.0ft	North Reference:	True
Reference Well:	SRC Evans P-26-23-14CHZ	Survey Calculation Method:	Minimum Curvature
Well Error:	0.0ft	Output errors are at	2.00 sigma
Reference Wellbore	Wellbore #1	Database:	Landmark
Reference Design:	Plan #1 (10-27-14)	Offset TVD Reference:	Offset Datum

Offset Design		Existing Wells Sec.26-T5N-R66W - UPRC 23-7H6 (Exist) - Wellbore #1 - Wellbore #1											Offset Site Error:		0.0 ft	
Survey Program: 7463-UNKNOWN														Offset Well Error:		0.0 ft
Reference		Offset		Semi Major Axis			Distance							Warning		
Measured Depth Depth (ft)	Vertical Depth (ft)	Measured Depth Depth (ft)	Vertical Depth (ft)	Reference (ft)	Offset (ft)	Highside Toolface (°)	Offset Wellbore Centre +N/-S (ft)	+E/-W (ft)	Between Centres (ft)	Between Ellipses (ft)	Minimum Separation (ft)	Separation Factor				
12,100.0	7,200.0	7,297.0	7,297.0	92.0	145.9	-90.00	5,185.2	-68.0	772.8	535.0	237.85	3.249				
12,200.0	7,200.0	7,297.0	7,297.0	93.9	145.9	-90.00	5,185.2	-68.0	686.3	446.5	239.73	2.863				
12,300.0	7,200.0	7,297.0	7,297.0	95.8	145.9	-90.00	5,185.2	-68.0	603.9	362.3	241.62	2.499				
12,400.0	7,200.0	7,297.0	7,297.0	97.6	145.9	-90.00	5,185.2	-68.0	527.6	284.1	243.51	2.167				
12,500.0	7,200.0	7,297.0	7,297.0	99.5	145.9	-90.00	5,185.2	-68.0	460.5	215.1	245.40	1.877				
12,600.0	7,200.0	7,297.0	7,297.0	101.4	145.9	-90.00	5,185.2	-68.0	407.2	159.9	247.29	1.647				
12,700.0	7,200.0	7,297.0	7,297.0	103.3	145.9	-90.00	5,185.2	-68.0	373.5	124.3	249.18	1.499	Level 3			
12,781.5	7,200.0	7,297.0	7,297.0	104.9	145.9	-90.00	5,185.2	-68.0	364.5	113.8	250.72	1.454	Level 3, CC, ES			
12,800.0	7,200.0	7,297.0	7,297.0	105.2	145.9	-90.00	5,185.2	-68.0	365.0	113.9	251.07	1.454	Level 3, SF			
12,900.0	7,200.0	7,297.0	7,297.0	107.1	145.9	-90.00	5,185.2	-68.0	383.3	130.3	252.97	1.515				
13,000.0	7,200.0	7,297.0	7,297.0	109.0	145.9	-90.00	5,185.2	-68.0	425.0	170.1	254.86	1.668				
13,100.0	7,200.0	7,297.0	7,297.0	110.9	145.9	-90.00	5,185.2	-68.0	484.1	227.3	256.76	1.885				
13,200.0	7,200.0	7,297.0	7,297.0	112.8	145.9	-90.00	5,185.2	-68.0	555.0	296.3	258.65	2.146				
13,300.0	7,200.0	7,297.0	7,297.0	114.7	145.9	-90.00	5,185.2	-68.0	633.8	373.3	260.55	2.433				
13,400.0	7,200.0	7,297.0	7,297.0	116.6	145.9	-90.00	5,185.2	-68.0	717.9	455.5	262.45	2.736				

Company:	Synergy Resources	Local Co-ordinate Reference:	Well SRC Evans P-26-23-14CHZ
Project:	SEC.26-T5N-R66W	TVD Reference:	WELL @ 4763.0ft (RKB - 15')
Reference Site:	SRC Evans Center Pad Sec.26-T5N-R66W	MD Reference:	WELL @ 4763.0ft (RKB - 15')
Site Error:	0.0ft	North Reference:	True
Reference Well:	SRC Evans P-26-23-14CHZ	Survey Calculation Method:	Minimum Curvature
Well Error:	0.0ft	Output errors are at	2.00 sigma
Reference Wellbore	Wellbore #1	Database:	Landmark
Reference Design:	Plan #1 (10-27-14)	Offset TVD Reference:	Offset Datum

Offset Design Existing Wells Sec.26-T5N-R66W - UPV 23-1H6 (P&A) - Wellbore #1 - Wellbore #1												Offset Site Error:	0.0 ft
Survey Program: 7925-UNKNOWN												Offset Well Error:	0.0 ft
Reference	Offset	Semi Major Axis			Distance								Warning
Measured Depth (ft)	Vertical Depth (ft)	Measured Depth (ft)	Vertical Depth (ft)	Reference (ft)	Offset (ft)	Highside Toolface (°)	Offset Wellbore Centre +N/-S (ft)	+E/-W (ft)	Between Centres (ft)	Between Ellipses (ft)	Minimum Separation (ft)	Separation Factor	
12,200.0	7,200.0	7,297.0	7,297.0	93.9	145.9	-90.00	5,247.2	-79.1	745.0	505.3	239.73	3.108	
12,300.0	7,200.0	7,297.0	7,297.0	95.8	145.9	-90.00	5,247.2	-79.1	660.5	418.9	241.62	2.734	
12,400.0	7,200.0	7,297.0	7,297.0	97.6	145.9	-90.00	5,247.2	-79.1	581.1	337.6	243.51	2.386	
12,500.0	7,200.0	7,297.0	7,297.0	99.5	145.9	-90.00	5,247.2	-79.1	508.9	263.5	245.40	2.074	
12,600.0	7,200.0	7,297.0	7,297.0	101.4	145.9	-90.00	5,247.2	-79.1	447.5	200.2	247.29	1.810	
12,700.0	7,200.0	7,297.0	7,297.0	103.3	145.9	-90.00	5,247.2	-79.1	402.0	152.8	249.18	1.613	
12,800.0	7,200.0	7,297.0	7,297.0	105.2	145.9	-90.00	5,247.2	-79.1	378.0	126.9	251.07	1.506	
12,843.4	7,200.0	7,297.0	7,297.0	106.0	145.9	-90.00	5,247.2	-79.1	375.5	123.6	251.90	1.491	Level 3, CC, ES, SF
12,900.0	7,200.0	7,297.0	7,297.0	107.1	145.9	-90.00	5,247.2	-79.1	379.7	126.8	252.97	1.501	
13,000.0	7,200.0	7,297.0	7,297.0	109.0	145.9	-90.00	5,247.2	-79.1	406.8	152.0	254.86	1.596	
13,100.0	7,200.0	7,297.0	7,297.0	110.9	145.9	-90.00	5,247.2	-79.1	454.8	198.0	256.76	1.771	
13,200.0	7,200.0	7,297.0	7,297.0	112.8	145.9	-90.00	5,247.2	-79.1	517.8	259.2	258.65	2.002	
13,300.0	7,200.0	7,297.0	7,297.0	114.7	145.9	-90.00	5,247.2	-79.1	591.2	330.6	260.55	2.269	
13,400.0	7,200.0	7,297.0	7,297.0	116.6	145.9	-90.00	5,247.2	-79.1	671.4	408.9	262.45	2.558	
13,500.0	7,200.0	7,297.0	7,297.0	118.5	145.9	-90.00	5,247.2	-79.1	756.4	492.0	264.35	2.861	

Company:	Synergy Resources	Local Co-ordinate Reference:	Well SRC Evans P-26-23-14CHZ
Project:	SEC.26-T5N-R66W	TVD Reference:	WELL @ 4763.0ft (RKB - 15')
Reference Site:	SRC Evans Center Pad Sec.26-T5N-R66W	MD Reference:	WELL @ 4763.0ft (RKB - 15')
Site Error:	0.0ft	North Reference:	True
Reference Well:	SRC Evans P-26-23-14CHZ	Survey Calculation Method:	Minimum Curvature
Well Error:	0.0ft	Output errors are at	2.00 sigma
Reference Wellbore	Wellbore #1	Database:	Landmark
Reference Design:	Plan #1 (10-27-14)	Offset TVD Reference:	Offset Datum

Offset Design Existing Wells Sec.26-T5N-R66W - UPV 23-2H6 (Exist) - Wellbore #1 - Wellbore #1												Offset Site Error:	0.0 ft
Survey Program: 7787-UNKNOWN												Offset Well Error:	0.0 ft
Reference	Offset	Semi Major Axis			Distance								Warning
Measured Depth (ft)	Vertical Depth (ft)	Measured Depth (ft)	Vertical Depth (ft)	Reference (ft)	Offset (ft)	Highside Toolface (°)	Offset Wellbore Centre +N/-S (ft)	+E/-W (ft)	Between Centres (ft)	Between Ellipses (ft)	Minimum Separation (ft)	Separation Factor	
12,200.0	7,200.0	7,297.0	7,297.0	93.9	145.9	-90.00	5,283.6	-81.9	778.0	538.3	239.73	3.245	
12,300.0	7,200.0	7,297.0	7,297.0	95.8	145.9	-90.00	5,283.6	-81.9	692.3	450.7	241.62	2.865	
12,400.0	7,200.0	7,297.0	7,297.0	97.6	145.9	-90.00	5,283.6	-81.9	611.0	367.5	243.51	2.509	
12,500.0	7,200.0	7,297.0	7,297.0	99.5	145.9	-90.00	5,283.6	-81.9	536.0	290.6	245.40	2.184	
12,600.0	7,200.0	7,297.0	7,297.0	101.4	145.9	-90.00	5,283.6	-81.9	470.5	223.2	247.29	1.903	
12,700.0	7,200.0	7,297.0	7,297.0	103.3	145.9	-90.00	5,283.6	-81.9	418.8	169.6	249.18	1.681	
12,800.0	7,200.0	7,297.0	7,297.0	105.2	145.9	-90.00	5,283.6	-81.9	386.6	135.5	251.07	1.540	
12,879.9	7,200.0	7,297.0	7,297.0	106.7	145.9	-90.00	5,283.6	-81.9	378.2	125.6	252.59	1.497	Level 3, CC, ES
12,900.0	7,200.0	7,297.0	7,297.0	107.1	145.9	-90.00	5,283.6	-81.9	378.7	125.8	252.97	1.497	Level 3, SF
13,000.0	7,200.0	7,297.0	7,297.0	109.0	145.9	-90.00	5,283.6	-81.9	396.8	142.0	254.86	1.557	
13,100.0	7,200.0	7,297.0	7,297.0	110.9	145.9	-90.00	5,283.6	-81.9	437.6	180.8	256.76	1.704	
13,200.0	7,200.0	7,297.0	7,297.0	112.8	145.9	-90.00	5,283.6	-81.9	495.5	236.9	258.65	1.916	
13,300.0	7,200.0	7,297.0	7,297.0	114.7	145.9	-90.00	5,283.6	-81.9	565.3	304.7	260.55	2.170	
13,400.0	7,200.0	7,297.0	7,297.0	116.6	145.9	-90.00	5,283.6	-81.9	643.1	380.6	262.45	2.450	
13,500.0	7,200.0	7,297.0	7,297.0	118.5	145.9	-90.00	5,283.6	-81.9	726.4	462.0	264.35	2.748	

Company:	Synergy Resources	Local Co-ordinate Reference:	Well SRC Evans P-26-23-14CHZ
Project:	SEC.26-T5N-R66W	TVD Reference:	WELL @ 4763.0ft (RKB - 15')
Reference Site:	SRC Evans Center Pad Sec.26-T5N-R66W	MD Reference:	WELL @ 4763.0ft (RKB - 15')
Site Error:	0.0ft	North Reference:	True
Reference Well:	SRC Evans P-26-23-14CHZ	Survey Calculation Method:	Minimum Curvature
Well Error:	0.0ft	Output errors are at	2.00 sigma
Reference Wellbore	Wellbore #1	Database:	Landmark
Reference Design:	Plan #1 (10-27-14)	Offset TVD Reference:	Offset Datum

Offset Design Existing Wells Sec.26-T5N-R66W - UPV 23-8H6 (Exist) - Wellbore #1 - Wellbore #1												Offset Site Error:	0.0 ft
Survey Program: 7879-UNKNOWN												Offset Well Error:	0.0 ft
Reference	Offset	Semi Major Axis			Distance								Warning
Measured Depth (ft)	Vertical Depth (ft)	Measured Depth (ft)	Vertical Depth (ft)	Reference (ft)	Offset (ft)	Highside Toolface (°)	Offset Wellbore Centre +N/-S (ft)	+E/-W (ft)	Between Centres (ft)	Between Ellipses (ft)	Minimum Separation (ft)	Separation Factor	
12,200.0	7,200.0	7,297.0	7,297.0	93.9	145.9	-90.00	5,221.7	-70.8	718.8	479.1	239.73	2.998	
12,300.0	7,200.0	7,297.0	7,297.0	95.8	145.9	-90.00	5,221.7	-70.8	634.9	393.3	241.62	2.628	
12,400.0	7,200.0	7,297.0	7,297.0	97.6	145.9	-90.00	5,221.7	-70.8	556.3	312.8	243.51	2.285	
12,500.0	7,200.0	7,297.0	7,297.0	99.5	145.9	-90.00	5,221.7	-70.8	485.7	240.3	245.40	1.979	
12,600.0	7,200.0	7,297.0	7,297.0	101.4	145.9	-90.00	5,221.7	-70.8	427.0	179.7	247.29	1.727	
12,700.0	7,200.0	7,297.0	7,297.0	103.3	145.9	-90.00	5,221.7	-70.8	385.7	136.5	249.18	1.548	
12,800.0	7,200.0	7,297.0	7,297.0	105.2	145.9	-90.00	5,221.7	-70.8	367.6	116.6	251.07	1.464	Level 3
12,817.9	7,200.0	7,297.0	7,297.0	105.5	145.9	-90.00	5,221.7	-70.8	367.2	115.8	251.41	1.461	Level 3, CC, ES, SF
12,900.0	7,200.0	7,297.0	7,297.0	107.1	145.9	-90.00	5,221.7	-70.8	376.3	123.3	252.97	1.487	Level 3
13,000.0	7,200.0	7,297.0	7,297.0	109.0	145.9	-90.00	5,221.7	-70.8	409.9	155.0	254.86	1.608	
13,100.0	7,200.0	7,297.0	7,297.0	110.9	145.9	-90.00	5,221.7	-70.8	463.0	206.3	256.76	1.803	
13,200.0	7,200.0	7,297.0	7,297.0	112.8	145.9	-90.00	5,221.7	-70.8	529.9	271.3	258.65	2.049	
13,300.0	7,200.0	7,297.0	7,297.0	114.7	145.9	-90.00	5,221.7	-70.8	606.0	345.5	260.55	2.326	
13,400.0	7,200.0	7,297.0	7,297.0	116.6	145.9	-90.00	5,221.7	-70.8	688.2	425.8	262.45	2.622	
13,500.0	7,200.0	7,297.0	7,297.0	118.5	145.9	-90.00	5,221.7	-70.8	774.7	510.3	264.35	2.930	

Company:	Synergy Resources	Local Co-ordinate Reference:	Well SRC Evans P-26-23-14CHZ
Project:	SEC.26-T5N-R66W	TVD Reference:	WELL @ 4763.0ft (RKB - 15')
Reference Site:	SRC Evans Center Pad Sec.26-T5N-R66W	MD Reference:	WELL @ 4763.0ft (RKB - 15')
Site Error:	0.0ft	North Reference:	True
Reference Well:	SRC Evans P-26-23-14CHZ	Survey Calculation Method:	Minimum Curvature
Well Error:	0.0ft	Output errors are at	2.00 sigma
Reference Wellbore	Wellbore #1	Database:	Landmark
Reference Design:	Plan #1 (10-27-14)	Offset TVD Reference:	Offset Datum

Offset Design													Offset Site Error:	0.0 ft
Survey Program: 0-MWD													Offset Well Error:	0.0 ft
Reference		Offset		Semi Major Axis			Distance							Warning
Measured Depth (ft)	Vertical Depth (ft)	Measured Depth (ft)	Vertical Depth (ft)	Reference (ft)	Offset (ft)	Highside Toolface (°)	Offset Wellbore Centre +N/-S (ft)	+E/-W (ft)	Between Centres (ft)	Between Ellipses (ft)	Minimum Separation (ft)	Separation Factor		
0.0	0.0	0.0	0.0	0.0	0.0	180.00	-44.8	0.0	44.8					
100.0	100.0	99.0	99.0	0.1	0.1	180.00	-44.8	0.0	44.8	44.6	0.22	200.364		
200.0	200.0	199.0	199.0	0.3	0.3	180.00	-44.8	0.0	44.8	44.1	0.67	66.677		
300.0	300.0	299.0	299.0	0.6	0.6	180.00	-44.8	0.0	44.8	43.7	1.12	39.953		
400.0	400.0	399.0	399.0	0.8	0.8	180.00	-44.8	0.0	44.8	43.2	1.57	28.521 CC, ES		
500.0	500.0	497.5	497.5	1.0	1.0	-179.24	-46.4	-0.6	46.4	44.4	1.99	23.262		
600.0	600.0	595.8	595.7	1.2	1.2	-177.21	-51.0	-2.5	51.2	48.8	2.41	21.240		
700.0	700.0	693.7	693.2	1.5	1.4	-174.58	-58.8	-5.6	59.3	56.5	2.84	20.888		
800.0	800.0	792.2	791.1	1.7	1.6	-172.00	-69.1	-9.7	70.3	67.0	3.28	21.412		
900.0	900.0	891.7	889.9	1.9	1.9	35.94	-79.8	-14.0	80.2	76.5	3.69	21.728		
1,000.0	999.8	991.3	988.8	2.1	2.2	39.33	-90.6	-18.3	87.5	83.4	4.08	21.421		
1,100.0	1,099.5	1,090.9	1,087.7	2.3	2.5	43.65	-101.3	-22.6	92.5	88.0	4.50	20.574		
1,203.7	1,202.4	1,194.2	1,190.3	2.5	2.8	49.26	-112.4	-27.0	95.8	90.9	4.96	19.337		
1,300.0	1,297.7	1,289.9	1,285.4	2.8	3.1	54.95	-122.7	-31.1	98.7	93.2	5.42	18.188		
1,400.0	1,396.7	1,389.3	1,384.2	3.0	3.4	60.47	-133.4	-35.4	102.6	96.6	5.95	17.247		
1,500.0	1,495.7	1,488.8	1,483.0	3.3	3.7	65.54	-144.1	-39.7	107.4	100.9	6.50	16.510		
1,600.0	1,594.7	1,588.2	1,581.7	3.6	4.0	70.16	-154.8	-43.9	113.0	105.9	7.09	15.936		
1,700.0	1,693.7	1,687.7	1,680.5	3.9	4.3	74.31	-165.5	-48.2	119.2	111.5	7.70	15.491		
1,800.0	1,792.8	1,787.1	1,779.3	4.3	4.6	78.04	-176.2	-52.5	126.0	117.7	8.32	15.149		
1,900.0	1,891.8	1,886.6	1,878.1	4.6	4.9	81.38	-186.9	-56.8	133.3	124.4	8.95	14.890		
2,000.0	1,990.8	1,986.0	1,976.8	4.9	5.2	84.36	-197.6	-61.1	141.0	131.4	9.60	14.694		
2,100.0	2,089.8	2,085.5	2,075.6	5.3	5.6	87.03	-208.3	-65.3	149.0	138.8	10.24	14.549		
2,200.0	2,188.8	2,184.9	2,174.4	5.6	5.9	89.42	-219.0	-69.6	157.4	146.5	10.89	14.444		
2,300.0	2,287.8	2,284.4	2,273.2	5.9	6.2	91.57	-229.7	-73.9	165.9	154.4	11.55	14.370		
2,400.0	2,386.8	2,383.8	2,372.0	6.3	6.5	93.51	-240.4	-78.2	174.7	162.5	12.20	14.320		
2,500.0	2,485.8	2,483.3	2,470.7	6.6	6.8	95.26	-251.1	-82.4	183.7	170.8	12.85	14.288		
2,600.0	2,584.8	2,582.7	2,569.5	6.9	7.1	96.84	-261.8	-86.7	192.8	179.3	13.51	14.272		
2,700.0	2,683.8	2,682.2	2,668.3	7.3	7.4	98.29	-272.5	-91.0	202.0	187.9	14.16	14.266		
2,800.0	2,782.8	2,781.6	2,767.1	7.6	7.8	99.60	-283.2	-95.3	211.4	196.6	14.81	14.270		
2,900.0	2,881.8	2,881.1	2,865.8	8.0	8.1	100.81	-293.9	-99.5	220.8	205.4	15.46	14.280		
3,000.0	2,980.9	2,980.5	2,964.6	8.3	8.4	101.91	-304.7	-103.8	230.4	214.3	16.12	14.296		
3,100.0	3,079.9	3,080.0	3,063.4	8.7	8.7	102.93	-315.4	-108.1	240.0	223.3	16.77	14.316		
3,200.0	3,178.9	3,179.4	3,162.2	9.0	9.0	103.87	-326.1	-112.4	249.7	232.3	17.42	14.339		
3,300.0	3,277.9	3,278.9	3,261.0	9.4	9.3	104.73	-336.8	-116.6	259.5	241.4	18.06	14.364		
3,400.0	3,376.9	3,378.3	3,359.7	9.7	9.7	105.54	-347.5	-120.9	269.3	250.6	18.71	14.391		
3,500.0	3,475.9	3,477.8	3,458.5	10.1	10.0	106.29	-358.2	-125.2	279.2	259.8	19.36	14.419		
3,600.0	3,574.9	3,577.2	3,557.3	10.4	10.3	106.99	-368.9	-129.5	289.1	269.1	20.01	14.449		
3,700.0	3,673.9	3,676.7	3,656.1	10.8	10.6	107.64	-379.6	-133.8	299.0	278.4	20.65	14.478		
3,800.0	3,772.9	3,776.1	3,754.8	11.1	10.9	108.24	-390.3	-138.0	309.0	287.7	21.30	14.508		
3,900.0	3,871.9	3,875.6	3,853.6	11.5	11.2	108.82	-401.0	-142.3	319.0	297.1	21.95	14.538		
4,000.0	3,970.9	3,975.0	3,952.4	11.8	11.6	109.35	-411.7	-146.6	329.1	306.5	22.59	14.567		
4,100.0	4,070.0	4,074.4	4,051.2	12.2	11.9	109.86	-422.4	-150.9	339.2	315.9	23.23	14.597		
4,200.0	4,169.0	4,173.9	4,150.0	12.5	12.2	110.33	-433.1	-155.1	349.3	325.4	23.88	14.626		
4,300.0	4,268.0	4,273.3	4,248.7	12.9	12.5	110.78	-443.8	-159.4	359.4	334.9	24.52	14.655		
4,400.0	4,367.0	4,372.8	4,347.5	13.2	12.8	111.20	-454.5	-163.7	369.5	344.3	25.17	14.683		
4,500.0	4,466.0	4,472.2	4,446.3	13.6	13.1	111.60	-465.2	-168.0	379.7	353.9	25.81	14.711		
4,600.0	4,565.0	4,571.7	4,545.1	13.9	13.5	111.98	-475.9	-172.2	389.9	363.4	26.45	14.738		
4,700.0	4,664.0	4,671.1	4,643.8	14.3	13.8	112.35	-486.6	-176.5	400.0	373.0	27.09	14.765		
4,800.0	4,763.0	4,770.6	4,742.6	14.6	14.1	112.69	-497.3	-180.8	410.3	382.5	27.74	14.791		
4,900.0	4,862.0	4,870.0	4,841.4	15.0	14.4	113.01	-508.0	-185.1	420.5	392.1	28.38	14.817		
5,000.0	4,961.0	4,969.5	4,940.2	15.3	14.7	113.33	-518.7	-189.3	430.7	401.7	29.02	14.842		
5,100.0	5,060.0	5,068.9	5,039.0	15.7	15.0	113.62	-529.4	-193.6	441.0	411.3	29.66	14.866		

CC - Min centre to center distance or convergent point, SF - min separation factor, ES - min ellipse separation

SRC Evans Center Pad Sec.26-T5N-R66W - SRC Evans 23-26-23-14CHZ - Wellbore #1 - Plan #1 (10-													Offset Site Error:	0.0 ft
Survey Program: 0-MWD													Offset Well Error:	0.0 ft
Reference		Offset		Semi Major Axis			Distance							
Measured Depth (ft)	Vertical Depth (ft)	Measured Depth (ft)	Vertical Depth (ft)	Reference (ft)	Offset (ft)	Highside Toolface (°)	Offset Wellbore Centre +N/-S (ft)	+E/-W (ft)	Between Centres (ft)	Between Ellipses (ft)	Minimum Separation (ft)	Separation Factor	Warning	
5,200.0	5,159.0	5,168.4	5,137.7	16.0	15.4	113.91	-540.1	-197.9	451.2	420.9	30.30	14.890		
5,300.0	5,258.1	5,267.8	5,236.5	16.4	15.7	114.18	-550.8	-202.2	461.5	430.5	30.94	14.914		
5,400.0	5,357.1	5,367.3	5,335.3	16.7	16.0	114.43	-561.5	-206.4	471.8	440.2	31.59	14.936		
5,500.0	5,456.1	5,466.7	5,434.1	17.1	16.3	114.68	-572.2	-210.7	482.1	449.8	32.23	14.959		
5,600.0	5,555.1	5,566.2	5,532.9	17.4	16.6	114.92	-582.9	-215.0	492.4	459.5	32.87	14.980		
5,700.0	5,654.1	5,665.6	5,631.6	17.8	16.9	115.15	-593.6	-219.3	502.7	469.1	33.51	15.001		
5,800.0	5,753.1	5,765.1	5,730.4	18.2	17.3	115.36	-604.3	-223.6	513.0	478.8	34.15	15.022		
5,900.0	5,852.1	5,864.5	5,829.2	18.5	17.6	115.57	-615.0	-227.8	523.3	488.5	34.79	15.042		
5,946.0	5,897.6	5,910.2	5,874.6	18.7	17.7	115.67	-620.0	-229.8	528.0	492.9	35.08	15.051		
6,000.0	5,951.2	5,964.0	5,928.0	18.8	17.9	115.82	-625.8	-232.1	533.4	498.0	35.41	15.063		
6,100.0	6,050.6	6,067.9	6,031.3	19.0	18.2	115.89	-636.3	-236.3	541.9	506.0	35.92	15.085		
6,200.0	6,150.4	6,175.1	6,138.2	19.2	18.4	115.91	-643.8	-239.3	547.7	511.3	36.33	15.075		
6,300.0	6,250.3	6,282.5	6,245.5	19.4	18.6	115.91	-647.5	-240.8	550.6	513.9	36.66	15.018		
6,349.7	6,300.0	6,335.9	6,298.9	19.5	18.6	-89.47	-648.0	-241.0	550.9	514.1	36.82	14.965		
6,400.0	6,350.3	6,386.3	6,349.3	19.5	18.7	-89.47	-648.0	-241.0	550.9	514.0	36.97	14.904		
6,500.0	6,450.3	6,486.3	6,449.3	19.7	18.8	-89.47	-648.0	-241.0	550.9	513.7	37.23	14.797		
6,533.5	6,483.8	6,519.8	6,482.8	19.7	18.9	-89.47	-648.0	-241.0	550.9	513.6	37.32	14.762		
6,550.0	6,500.3	6,536.2	6,499.2	19.7	18.9	-89.34	-647.8	-241.0	550.9	513.6	37.36	14.746		
6,600.0	6,550.2	6,585.8	6,548.7	19.8	18.9	-89.35	-645.1	-241.0	550.9	513.5	37.44	14.713		
6,650.0	6,599.8	6,635.3	6,597.8	19.8	19.0	-89.36	-638.9	-241.0	550.9	513.5	37.47	14.703		
6,700.0	6,648.8	6,684.9	6,646.5	19.8	19.0	-89.38	-629.3	-241.0	550.9	513.5	37.44	14.715		
6,750.0	6,697.0	6,734.5	6,694.3	19.7	18.9	-89.40	-616.4	-241.1	550.9	513.6	37.36	14.746		
6,800.0	6,744.2	6,784.1	6,741.2	19.6	18.9	-89.42	-600.2	-241.1	550.9	513.7	37.23	14.796		
6,850.0	6,790.1	6,833.7	6,786.9	19.6	18.8	-89.45	-580.7	-241.2	550.9	513.8	37.07	14.863		
6,900.0	6,834.5	6,883.4	6,831.1	19.4	18.7	-89.47	-558.2	-241.2	550.9	514.0	36.87	14.944		
6,950.0	6,877.2	6,933.0	6,873.6	19.3	18.6	-89.50	-532.6	-241.3	550.9	514.3	36.64	15.035		
7,000.0	6,918.0	6,982.7	6,914.3	19.2	18.5	-89.54	-504.2	-241.3	550.9	514.5	36.40	15.134		
7,050.0	6,956.7	7,032.4	6,953.0	19.1	18.4	-89.57	-472.9	-241.4	550.9	514.7	36.16	15.235		
7,100.0	6,993.1	7,082.1	6,989.4	18.9	18.2	-89.61	-439.1	-241.5	550.9	515.0	35.93	15.335		
7,150.0	7,026.9	7,131.9	7,023.4	18.8	18.1	-89.65	-402.8	-241.6	550.9	515.2	35.71	15.427		
7,200.0	7,058.2	7,181.7	7,054.8	18.6	18.0	-89.69	-364.1	-241.6	550.9	515.4	35.52	15.507		
7,250.0	7,086.6	7,231.5	7,083.4	18.5	17.9	-89.73	-323.4	-241.7	550.9	515.5	35.38	15.569		
7,300.0	7,112.1	7,281.3	7,109.2	18.4	17.9	-89.77	-280.8	-241.8	550.9	515.6	35.30	15.608		
7,350.0	7,134.6	7,331.2	7,132.0	18.3	17.8	-89.82	-236.4	-241.9	550.9	515.6	35.27	15.618		
7,400.0	7,153.9	7,381.1	7,151.6	18.2	17.8	-89.86	-190.6	-242.0	550.9	515.6	35.32	15.595		
7,450.0	7,169.9	7,431.0	7,168.0	18.2	17.8	-89.91	-143.5	-242.2	550.9	515.4	35.46	15.537		
7,500.0	7,182.5	7,480.9	7,181.1	18.2	17.9	-89.95	-95.3	-242.3	550.9	515.2	35.67	15.442		
7,550.0	7,191.8	7,530.9	7,190.8	18.3	18.0	-90.00	-46.2	-242.4	550.9	514.9	35.98	15.310		
7,552.8	7,192.2	7,533.7	7,191.2	18.3	18.0	-90.00	-43.5	-242.4	550.9	514.9	36.00	15.302		
7,600.0	7,197.6	7,580.9	7,197.1	18.4	18.2	-90.05	3.4	-242.5	550.9	514.5	36.38	15.144		
7,650.0	7,199.9	7,631.0	7,199.8	18.5	18.4	-90.09	53.3	-242.6	550.9	514.0	36.86	14.946		
7,658.5	7,200.0	7,639.5	7,200.0	18.6	18.5	-90.10	61.8	-242.6	550.9	513.9	36.95	14.911		
7,700.0	7,200.0	7,681.0	7,200.0	18.8	18.7	-90.10	103.3	-242.7	550.9	513.5	37.43	14.719		
7,800.0	7,200.0	7,781.0	7,200.0	19.4	19.4	-90.10	203.3	-242.9	550.9	512.1	38.83	14.187		
7,900.0	7,200.0	7,881.0	7,200.0	20.2	20.3	-90.10	303.3	-243.2	550.9	510.3	40.54	13.589		
8,000.0	7,200.0	7,981.0	7,200.0	21.2	21.4	-90.10	403.3	-243.4	550.9	508.4	42.53	12.953		
8,100.0	7,200.0	8,081.0	7,200.0	22.3	22.5	-90.10	503.3	-243.6	550.9	506.1	44.76	12.306		
8,200.0	7,200.0	8,181.0	7,200.0	23.5	23.8	-90.10	603.3	-243.9	550.9	503.7	47.20	11.670		
8,300.0	7,200.0	8,281.0	7,200.0	24.8	25.1	-90.10	703.3	-244.1	550.9	501.1	49.82	11.057		
8,400.0	7,200.0	8,381.0	7,200.0	26.2	26.5	-90.10	803.3	-244.3	550.9	498.3	52.59	10.475		
8,500.0	7,200.0	8,481.0	7,200.0	27.7	28.0	-90.10	903.3	-244.6	550.9	495.4	55.49	9.928		
8,600.0	7,200.0	8,581.0	7,200.0	29.2	29.5	-90.10	1,003.3	-244.8	550.9	492.4	58.49	9.418		

Company:	Synergy Resources	Local Co-ordinate Reference:	Well SRC Evans P-26-23-14CHZ
Project:	SEC.26-T5N-R66W	TVD Reference:	WELL @ 4763.0ft (RKB - 15')
Reference Site:	SRC Evans Center Pad Sec.26-T5N-R66W	MD Reference:	WELL @ 4763.0ft (RKB - 15')
Site Error:	0.0ft	North Reference:	True
Reference Well:	SRC Evans P-26-23-14CHZ	Survey Calculation Method:	Minimum Curvature
Well Error:	0.0ft	Output errors are at	2.00 sigma
Reference Wellbore	Wellbore #1	Database:	Landmark
Reference Design:	Plan #1 (10-27-14)	Offset TVD Reference:	Offset Datum

Offset Design												Offset Site Error:	0.0 ft
Survey Program: 0-MWD												Offset Well Error:	0.0 ft
Reference		Offset		Semi Major Axis			Distance						Warning
Measured Depth (ft)	Vertical Depth (ft)	Measured Depth (ft)	Vertical Depth (ft)	Reference (ft)	Offset (ft)	Highside Toolface (°)	Offset Wellbore Centre +N/-S (ft)	+E/-W (ft)	Between Centres (ft)	Between Ellipses (ft)	Minimum Separation (ft)	Separation Factor	
8,700.0	7,200.0	8,681.0	7,200.0	30.7	31.1	-90.10	1,103.3	-245.0	550.9	489.3	61.59	8.944	
8,800.0	7,200.0	8,781.0	7,200.0	32.3	32.7	-90.10	1,203.3	-245.2	550.9	486.1	64.77	8.505	
8,900.0	7,200.0	8,881.0	7,200.0	33.9	34.3	-90.10	1,303.3	-245.5	550.9	482.9	68.02	8.099	
9,000.0	7,200.0	8,981.0	7,200.0	35.6	36.0	-90.10	1,403.3	-245.7	550.9	479.6	71.32	7.724	
9,100.0	7,200.0	9,081.0	7,200.0	37.2	37.7	-90.10	1,503.3	-245.9	550.9	476.2	74.68	7.376	
9,200.0	7,200.0	9,181.0	7,200.0	38.9	39.4	-90.10	1,603.3	-246.2	550.9	472.8	78.08	7.055	
9,300.0	7,200.0	9,281.0	7,200.0	40.6	41.1	-90.10	1,703.3	-246.4	550.9	469.4	81.53	6.757	
9,400.0	7,200.0	9,381.0	7,200.0	42.4	42.8	-90.10	1,803.3	-246.6	550.9	465.9	85.00	6.481	
9,500.0	7,200.0	9,481.0	7,200.0	44.1	44.6	-90.10	1,903.3	-246.8	550.9	462.4	88.51	6.224	
9,600.0	7,200.0	9,581.0	7,200.0	45.9	46.4	-90.10	2,003.3	-247.1	550.9	458.8	92.04	5.985	
9,700.0	7,200.0	9,681.0	7,200.0	47.6	48.1	-90.10	2,103.3	-247.3	550.9	455.3	95.60	5.762	
9,800.0	7,200.0	9,781.0	7,200.0	49.4	49.9	-90.10	2,203.3	-247.5	550.9	451.7	99.18	5.554	
9,900.0	7,200.0	9,881.0	7,200.0	51.2	51.7	-90.10	2,303.3	-247.8	550.9	448.1	102.78	5.360	
10,000.0	7,200.0	9,981.0	7,200.0	53.0	53.5	-90.10	2,403.3	-248.0	550.9	444.5	106.39	5.178	
10,100.0	7,200.0	10,081.0	7,200.0	54.8	55.4	-90.10	2,503.3	-248.2	550.9	440.9	110.02	5.007	
10,200.0	7,200.0	10,181.0	7,200.0	56.7	57.2	-90.10	2,603.3	-248.4	550.9	437.2	113.67	4.847	
10,300.0	7,200.0	10,281.0	7,200.0	58.5	59.0	-90.10	2,703.3	-248.7	550.9	433.6	117.32	4.695	
10,400.0	7,200.0	10,381.0	7,200.0	60.3	60.8	-90.10	2,803.3	-248.9	550.9	429.9	120.99	4.553	
10,500.0	7,200.0	10,481.0	7,200.0	62.1	62.7	-90.10	2,903.3	-249.1	550.9	426.2	124.67	4.419	
10,600.0	7,200.0	10,581.0	7,200.0	64.0	64.5	-90.10	3,003.3	-249.4	550.9	422.5	128.36	4.292	
10,700.0	7,200.0	10,681.0	7,200.0	65.8	66.4	-90.10	3,103.3	-249.6	550.9	418.8	132.06	4.172	
10,800.0	7,200.0	10,781.0	7,200.0	67.7	68.2	-90.10	3,203.3	-249.8	550.9	415.1	135.76	4.058	
10,900.0	7,200.0	10,881.0	7,200.0	69.5	70.1	-90.10	3,303.3	-250.0	550.9	411.4	139.47	3.950	
11,000.0	7,200.0	10,981.0	7,200.0	71.4	72.0	-90.10	3,403.3	-250.3	550.9	407.7	143.19	3.847	
11,100.0	7,200.0	11,081.0	7,200.0	73.2	73.8	-90.10	3,503.3	-250.5	550.9	404.0	146.92	3.750	
11,200.0	7,200.0	11,181.0	7,200.0	75.1	75.7	-90.10	3,603.3	-250.7	550.9	400.2	150.65	3.657	
11,300.0	7,200.0	11,281.0	7,200.0	77.0	77.6	-90.10	3,703.3	-251.0	550.9	396.5	154.39	3.568	
11,400.0	7,200.0	11,381.0	7,200.0	78.8	79.4	-90.10	3,803.3	-251.2	550.9	392.8	158.13	3.484	
11,500.0	7,200.0	11,481.0	7,200.0	80.7	81.3	-90.10	3,903.3	-251.4	550.9	389.0	161.88	3.403	
11,600.0	7,200.0	11,581.0	7,200.0	82.6	83.2	-90.10	4,003.3	-251.6	550.9	385.3	165.63	3.326	
11,700.0	7,200.0	11,681.0	7,200.0	84.5	85.1	-90.10	4,103.3	-251.9	550.9	381.5	169.39	3.252	
11,800.0	7,200.0	11,781.0	7,200.0	86.3	86.9	-90.10	4,203.3	-252.1	550.9	377.7	173.15	3.182	
11,900.0	7,200.0	11,881.0	7,200.0	88.2	88.8	-90.10	4,303.3	-252.3	550.9	374.0	176.91	3.114	
12,000.0	7,200.0	11,981.0	7,200.0	90.1	90.7	-90.10	4,403.3	-252.6	550.9	370.2	180.67	3.049	
12,100.0	7,200.0	12,081.0	7,200.0	92.0	92.6	-90.10	4,503.3	-252.8	550.9	366.4	184.44	2.987	
12,200.0	7,200.0	12,181.0	7,200.0	93.9	94.5	-90.10	4,603.3	-253.0	550.9	362.7	188.22	2.927	
12,300.0	7,200.0	12,281.0	7,200.0	95.8	96.4	-90.10	4,703.3	-253.2	550.9	358.9	191.99	2.869	
12,400.0	7,200.0	12,381.0	7,200.0	97.6	98.2	-90.10	4,803.3	-253.5	550.9	355.1	195.77	2.814	
12,500.0	7,200.0	12,481.0	7,200.0	99.5	100.1	-90.10	4,903.3	-253.7	550.9	351.3	199.55	2.761	
12,600.0	7,200.0	12,581.0	7,200.0	101.4	102.0	-90.10	5,003.3	-253.9	550.9	347.6	203.33	2.709	
12,700.0	7,200.0	12,681.0	7,200.0	103.3	103.9	-90.10	5,103.3	-254.2	550.9	343.8	207.12	2.660	
12,800.0	7,200.0	12,781.0	7,200.0	105.2	105.8	-90.10	5,203.3	-254.4	550.9	340.0	210.90	2.612	
12,900.0	7,200.0	12,881.0	7,200.0	107.1	107.7	-90.10	5,303.3	-254.6	550.9	336.2	214.69	2.566	
13,000.0	7,200.0	12,981.0	7,200.0	109.0	109.6	-90.10	5,403.3	-254.9	550.9	332.4	218.48	2.521	
13,100.0	7,200.0	13,081.0	7,200.0	110.9	111.5	-90.10	5,503.3	-255.1	550.9	328.6	222.28	2.478	
13,200.0	7,200.0	13,181.0	7,200.0	112.8	113.4	-90.10	5,603.3	-255.3	550.9	324.8	226.07	2.437	
13,300.0	7,200.0	13,281.0	7,200.0	114.7	115.3	-90.10	5,703.3	-255.5	550.9	321.0	229.87	2.397	
13,400.0	7,200.0	13,381.0	7,200.0	116.6	117.2	-90.10	5,803.3	-255.8	550.9	317.2	233.66	2.358	
13,500.0	7,200.0	13,481.0	7,200.0	118.5	119.1	-90.10	5,903.3	-256.0	550.9	313.4	237.46	2.320	
13,600.0	7,200.0	13,581.0	7,200.0	120.4	121.0	-90.10	6,003.3	-256.2	550.9	309.6	241.26	2.283	
13,700.0	7,200.0	13,681.0	7,200.0	122.3	122.9	-90.10	6,103.3	-256.5	550.9	305.8	245.07	2.248	
13,800.0	7,200.0	13,781.0	7,200.0	124.2	124.8	-90.10	6,203.3	-256.7	550.9	302.0	248.87	2.214	

CC - Min centre to center distance or convergent point, SF - min separation factor, ES - min ellipse separation

Company:	Synergy Resources	Local Co-ordinate Reference:	Well SRC Evans P-26-23-14CHZ
Project:	SEC.26-T5N-R66W	TVD Reference:	WELL @ 4763.0ft (RKB - 15')
Reference Site:	SRC Evans Center Pad Sec.26-T5N-R66W	MD Reference:	WELL @ 4763.0ft (RKB - 15')
Site Error:	0.0ft	North Reference:	True
Reference Well:	SRC Evans P-26-23-14CHZ	Survey Calculation Method:	Minimum Curvature
Well Error:	0.0ft	Output errors are at	2.00 sigma
Reference Wellbore	Wellbore #1	Database:	Landmark
Reference Design:	Plan #1 (10-27-14)	Offset TVD Reference:	Offset Datum

Offset Design												Offset Site Error:	0.0 ft
Survey Program: 0-MWD												Offset Well Error:	0.0 ft
Reference		Offset		Semi Major Axis			Distance						Warning
Measured Depth (ft)	Vertical Depth (ft)	Measured Depth (ft)	Vertical Depth (ft)	Reference (ft)	Offset (ft)	Highside Toolface (°)	Offset Wellbore Centre +N/-S (ft)	+E/-W (ft)	Between Centres (ft)	Between Ellipses (ft)	Minimum Separation (ft)	Separation Factor	
13,900.0	7,200.0	13,881.0	7,200.0	126.1	126.7	-90.10	6,303.3	-256.9	550.9	298.2	252.67	2.180	
14,000.0	7,200.0	13,981.0	7,200.0	128.0	128.6	-90.10	6,403.3	-257.1	550.9	294.4	256.48	2.148	
14,100.0	7,200.0	14,081.0	7,200.0	129.9	130.5	-90.10	6,503.3	-257.4	550.9	290.6	260.28	2.116	
14,200.0	7,200.0	14,181.0	7,200.0	131.8	132.4	-90.10	6,603.3	-257.6	550.9	286.8	264.09	2.086	
14,300.0	7,200.0	14,281.0	7,200.0	133.7	134.3	-90.10	6,703.3	-257.8	550.9	283.0	267.90	2.056	
14,400.0	7,200.0	14,381.0	7,200.0	135.6	136.2	-90.10	6,803.3	-258.1	550.9	279.2	271.71	2.027	
14,500.0	7,200.0	14,481.0	7,200.0	137.5	138.1	-90.10	6,903.3	-258.3	550.9	275.4	275.52	1.999	
14,600.0	7,200.0	14,581.0	7,200.0	139.4	140.0	-90.10	7,003.3	-258.5	550.9	271.6	279.33	1.972	
14,700.0	7,200.0	14,681.0	7,200.0	141.3	141.9	-90.10	7,103.3	-258.7	550.9	267.7	283.14	1.946	
14,800.0	7,200.0	14,781.0	7,200.0	143.2	143.8	-90.10	7,203.3	-259.0	550.9	263.9	286.96	1.920	
14,900.0	7,200.0	14,881.0	7,200.0	145.1	145.7	-90.10	7,303.3	-259.2	550.9	260.1	290.77	1.895	
15,000.0	7,200.0	14,981.0	7,200.0	147.0	147.7	-90.10	7,403.3	-259.4	550.9	256.3	294.58	1.870	
15,100.0	7,200.0	15,081.0	7,200.0	148.9	149.6	-90.10	7,503.3	-259.7	550.9	252.5	298.40	1.846	
15,200.0	7,200.0	15,181.0	7,200.0	150.8	151.5	-90.10	7,603.3	-259.9	550.9	248.7	302.21	1.823	
15,300.0	7,200.0	15,281.0	7,200.0	152.7	153.4	-90.10	7,703.3	-260.1	550.9	244.9	306.03	1.800	
15,400.0	7,200.0	15,381.0	7,200.0	154.6	155.3	-90.10	7,803.3	-260.3	550.9	241.0	309.85	1.778	
15,500.0	7,200.0	15,481.0	7,200.0	156.6	157.2	-90.10	7,903.3	-260.6	550.9	237.2	313.67	1.756	
15,600.0	7,200.0	15,581.0	7,200.0	158.5	159.1	-90.10	8,003.3	-260.8	550.9	233.4	317.48	1.735	
15,700.0	7,200.0	15,681.0	7,200.0	160.4	161.0	-90.10	8,103.3	-261.0	550.9	229.6	321.30	1.715	
15,800.0	7,200.0	15,781.0	7,200.0	162.3	162.9	-90.10	8,203.3	-261.3	550.9	225.8	325.12	1.694	
15,900.0	7,200.0	15,881.0	7,200.0	164.2	164.8	-90.10	8,303.3	-261.5	550.9	221.9	328.94	1.675	
16,000.0	7,200.0	15,981.0	7,200.0	166.1	166.7	-90.10	8,403.3	-261.7	550.9	218.1	332.76	1.655	
16,100.0	7,200.0	16,081.0	7,200.0	168.0	168.7	-90.10	8,503.3	-261.9	550.9	214.3	336.58	1.637	
16,200.0	7,200.0	16,181.0	7,200.0	169.9	170.6	-90.10	8,603.3	-262.2	550.9	210.5	340.41	1.618	
16,300.0	7,200.0	16,281.0	7,200.0	171.8	172.5	-90.10	8,703.3	-262.4	550.9	206.7	344.23	1.600	
16,400.0	7,200.0	16,381.0	7,200.0	173.7	174.4	-90.10	8,803.3	-262.6	550.9	202.8	348.05	1.583	
16,500.0	7,200.0	16,481.0	7,200.0	175.6	176.3	-90.10	8,903.3	-262.9	550.9	199.0	351.87	1.566	
16,600.0	7,200.0	16,581.0	7,200.0	177.6	178.2	-90.10	9,003.3	-263.1	550.9	195.2	355.70	1.549	
16,700.0	7,200.0	16,681.0	7,200.0	179.5	180.1	-90.10	9,103.3	-263.3	550.9	191.4	359.52	1.532	
16,800.0	7,200.0	16,781.0	7,200.0	181.4	182.0	-90.10	9,203.3	-263.5	550.9	187.5	363.35	1.516	
16,900.0	7,200.0	16,881.0	7,200.0	183.3	183.9	-90.10	9,303.3	-263.8	550.9	183.7	367.17	1.500	
16,995.0	7,200.0	16,976.0	7,200.0	185.1	185.8	-90.10	9,398.3	-264.0	550.9	180.1	370.80	1.486	Level 3, SF

Company:	Synergy Resources	Local Co-ordinate Reference:	Well SRC Evans P-26-23-14CHZ
Project:	SEC.26-T5N-R66W	TVD Reference:	WELL @ 4763.0ft (RKB - 15')
Reference Site:	SRC Evans Center Pad Sec.26-T5N-R66W	MD Reference:	WELL @ 4763.0ft (RKB - 15')
Site Error:	0.0ft	North Reference:	True
Reference Well:	SRC Evans P-26-23-14CHZ	Survey Calculation Method:	Minimum Curvature
Well Error:	0.0ft	Output errors are at	2.00 sigma
Reference Wellbore	Wellbore #1	Database:	Landmark
Reference Design:	Plan #1 (10-27-14)	Offset TVD Reference:	Offset Datum

Offset Design													Offset Site Error:	0.0 ft
Survey Program: 0-MWD													Offset Well Error:	0.0 ft
Reference		Offset		Semi Major Axis			Distance							Warning
Measured Depth (ft)	Vertical Depth (ft)	Measured Depth (ft)	Vertical Depth (ft)	Reference (ft)	Offset (ft)	Highside Toolface (°)	Offset Wellbore Centre +N/-S (ft)	+E/-W (ft)	Between Centres (ft)	Between Ellipses (ft)	Minimum Separation (ft)	Separation Factor		
0.0	0.0	0.0	0.0	0.0	0.0	180.00	-22.2	0.0	22.2					
100.0	100.0	100.0	100.0	0.1	0.1	180.00	-22.2	0.0	22.2	22.0	0.22	98.871		
200.0	200.0	200.0	200.0	0.3	0.3	180.00	-22.2	0.0	22.2	21.5	0.67	32.957		
300.0	300.0	300.0	300.0	0.6	0.6	180.00	-22.2	0.0	22.2	21.1	1.12	19.774		
400.0	400.0	400.0	400.0	0.8	0.8	180.00	-22.2	0.0	22.2	20.6	1.57	14.124		
500.0	500.0	500.0	500.0	1.0	1.0	180.00	-22.2	0.0	22.2	20.2	2.02	10.986		
600.0	600.0	600.0	600.0	1.2	1.2	180.00	-22.2	0.0	22.2	19.8	2.47	8.988 CC, ES		
700.0	700.0	699.4	699.3	1.5	1.4	-177.33	-23.5	-1.1	23.6	20.7	2.90	8.140 SF		
800.0	800.0	798.5	798.3	1.7	1.6	-170.94	-27.5	-4.4	27.9	24.6	3.31	8.428		
900.0	900.0	897.2	896.7	1.9	1.8	43.29	-34.1	-9.8	34.3	30.6	3.71	9.260		
1,000.0	999.8	995.3	994.1	2.1	2.1	53.92	-43.2	-17.4	42.5	38.4	4.09	10.387		
1,100.0	1,099.5	1,093.1	1,090.7	2.3	2.4	64.30	-54.8	-27.0	53.5	49.0	4.51	11.863		
1,203.7	1,202.4	1,195.5	1,191.7	2.5	2.7	74.11	-67.7	-37.7	66.1	61.2	4.98	13.291		
1,300.0	1,297.7	1,290.4	1,285.3	2.8	3.0	81.65	-79.8	-47.7	78.9	73.4	5.47	14.432		
1,400.0	1,396.7	1,389.1	1,382.6	3.0	3.3	87.22	-92.3	-58.1	93.1	87.1	6.01	15.499		
1,500.0	1,495.7	1,487.7	1,479.9	3.3	3.7	91.30	-104.8	-68.4	108.0	101.4	6.58	16.416		
1,600.0	1,594.7	1,586.3	1,577.2	3.6	4.0	94.38	-117.3	-78.8	123.3	116.1	7.17	17.195		
1,700.0	1,693.7	1,685.0	1,674.5	3.9	4.4	96.78	-129.8	-89.1	138.8	131.1	7.78	17.855		
1,800.0	1,792.8	1,783.6	1,771.8	4.3	4.8	98.69	-142.3	-99.5	154.6	146.2	8.39	18.417		
1,900.0	1,891.8	1,882.3	1,869.1	4.6	5.1	100.25	-154.8	-109.8	170.5	161.4	9.02	18.899		
2,000.0	1,990.8	1,980.9	1,966.4	4.9	5.5	101.54	-167.3	-120.2	186.4	176.8	9.65	19.315		
2,100.0	2,089.8	2,079.5	2,063.6	5.3	5.9	102.63	-179.8	-130.6	202.5	192.2	10.29	19.676		
2,200.0	2,188.8	2,178.2	2,160.9	5.6	6.3	103.56	-192.3	-140.9	218.6	207.7	10.94	19.992		
2,300.0	2,287.8	2,276.8	2,258.2	5.9	6.6	104.36	-204.8	-151.3	234.8	223.2	11.58	20.271		
2,400.0	2,386.8	2,375.4	2,355.5	6.3	7.0	105.06	-217.3	-161.6	251.0	238.8	12.23	20.518		
2,500.0	2,485.8	2,474.1	2,452.8	6.6	7.4	105.67	-229.8	-172.0	267.2	254.4	12.89	20.738		
2,600.0	2,584.8	2,572.7	2,550.1	6.9	7.8	106.21	-242.3	-182.4	283.5	270.0	13.54	20.936		
2,700.0	2,683.8	2,671.3	2,647.4	7.3	8.1	106.70	-254.8	-192.7	299.8	285.6	14.20	21.114		
2,800.0	2,782.8	2,770.0	2,744.7	7.6	8.5	107.13	-267.3	-203.1	316.1	301.3	14.86	21.275		
2,900.0	2,881.8	2,868.6	2,842.0	8.0	8.9	107.52	-279.8	-213.4	332.4	316.9	15.52	21.422		
3,000.0	2,980.9	2,967.2	2,939.2	8.3	9.3	107.88	-292.3	-223.8	348.8	332.6	16.18	21.556		
3,100.0	3,079.9	3,065.9	3,036.5	8.7	9.7	108.20	-304.8	-234.1	365.1	348.3	16.84	21.678		
3,200.0	3,178.9	3,164.5	3,133.8	9.0	10.0	108.50	-317.3	-244.5	381.5	364.0	17.51	21.791		
3,300.0	3,277.9	3,263.1	3,231.1	9.4	10.4	108.77	-329.8	-254.9	397.9	379.7	18.17	21.895		
3,400.0	3,376.9	3,361.8	3,328.4	9.7	10.8	109.02	-342.3	-265.2	414.2	395.4	18.84	21.991		
3,500.0	3,475.9	3,460.4	3,425.7	10.1	11.2	109.25	-354.8	-275.6	430.6	411.1	19.50	22.080		
3,600.0	3,574.9	3,559.0	3,523.0	10.4	11.6	109.46	-367.3	-285.9	447.0	426.9	20.17	22.163		
3,700.0	3,673.9	3,657.7	3,620.3	10.8	12.0	109.66	-379.8	-296.3	463.4	442.6	20.84	22.240		
3,800.0	3,772.9	3,756.3	3,717.6	11.1	12.3	109.84	-392.3	-306.7	479.8	458.3	21.51	22.312		
3,900.0	3,871.9	3,854.9	3,814.9	11.5	12.7	110.02	-404.8	-317.0	496.2	474.1	22.17	22.379		
4,000.0	3,970.9	3,953.6	3,912.1	11.8	13.1	110.18	-417.3	-327.4	512.6	489.8	22.84	22.443		
4,100.0	4,070.0	4,052.2	4,009.4	12.2	13.5	110.33	-429.8	-337.7	529.1	505.5	23.51	22.502		
4,200.0	4,169.0	4,150.8	4,106.7	12.5	13.9	110.47	-442.3	-348.1	545.5	521.3	24.18	22.558		
4,300.0	4,268.0	4,249.5	4,204.0	12.9	14.3	110.61	-454.8	-358.5	561.9	537.0	24.85	22.611		
4,400.0	4,367.0	4,348.1	4,301.3	13.2	14.6	110.73	-467.3	-368.8	578.3	552.8	25.52	22.661		
4,500.0	4,466.0	4,446.7	4,398.6	13.6	15.0	110.85	-479.8	-379.2	594.7	568.6	26.19	22.708		
4,600.0	4,565.0	4,545.4	4,495.9	13.9	15.4	110.97	-492.3	-389.5	611.2	584.3	26.86	22.753		
4,700.0	4,664.0	4,644.0	4,593.2	14.3	15.8	111.07	-504.8	-399.9	627.6	600.1	27.53	22.795		
4,800.0	4,763.0	4,742.6	4,690.5	14.6	16.2	111.18	-517.3	-410.2	644.0	615.8	28.20	22.835		
4,900.0	4,862.0	4,841.3	4,787.7	15.0	16.6	111.27	-529.8	-420.6	660.5	631.6	28.88	22.873		
5,000.0	4,961.0	4,939.9	4,885.0	15.3	17.0	111.36	-542.3	-431.0	676.9	647.4	29.55	22.910		
5,100.0	5,060.0	5,038.5	4,982.3	15.7	17.3	111.45	-554.8	-441.3	693.3	663.1	30.22	22.944		

CC - Min centre to center distance or convergent point, SF - min separation factor, ES - min ellipse separation

Company:	Synergy Resources	Local Co-ordinate Reference:	Well SRC Evans P-26-23-14CHZ
Project:	SEC.26-T5N-R66W	TVD Reference:	WELL @ 4763.0ft (RKB - 15')
Reference Site:	SRC Evans Center Pad Sec.26-T5N-R66W	MD Reference:	WELL @ 4763.0ft (RKB - 15')
Site Error:	0.0ft	North Reference:	True
Reference Well:	SRC Evans P-26-23-14CHZ	Survey Calculation Method:	Minimum Curvature
Well Error:	0.0ft	Output errors are at	2.00 sigma
Reference Wellbore	Wellbore #1	Database:	Landmark
Reference Design:	Plan #1 (10-27-14)	Offset TVD Reference:	Offset Datum

Offset Design												Offset Site Error:	0.0 ft
SRC Evans Center Pad Sec.26-T5N-R66W - SRC Evans 23-26-23-14NHZ - Wellbore #1 - Plan #1 (10-												Offset Well Error:	0.0 ft
Survey Program: 0-MWD													
Reference		Offset		Semi Major Axis			Distance						
Measured Depth (ft)	Vertical Depth (ft)	Measured Depth (ft)	Vertical Depth (ft)	Reference (ft)	Offset (ft)	Highside Toolface (°)	Offset Wellbore Centre +N/-S (ft)	+E/-W (ft)	Between Centres (ft)	Between Ellipses (ft)	Minimum Separation (ft)	Separation Factor	Warning
5,200.0	5,159.0	5,137.2	5,079.6	16.0	17.7	111.54	-567.3	-451.7	709.8	678.9	30.89	22.978	
5,300.0	5,258.1	5,235.8	5,176.9	16.4	18.1	111.62	-579.8	-462.0	726.2	694.7	31.56	23.009	
5,400.0	5,357.1	5,334.4	5,274.2	16.7	18.5	111.69	-592.3	-472.4	742.7	710.4	32.23	23.039	
5,500.0	5,456.1	5,433.1	5,371.5	17.1	18.9	111.77	-604.8	-482.8	759.1	726.2	32.91	23.068	
5,600.0	5,555.1	5,531.7	5,468.8	17.4	19.3	111.83	-617.3	-493.1	775.6	742.0	33.58	23.096	
5,700.0	5,654.1	5,639.1	5,574.7	17.8	19.6	111.93	-630.6	-504.1	791.8	757.6	34.24	23.126	

Company:	Synergy Resources	Local Co-ordinate Reference:	Well SRC Evans P-26-23-14CHZ
Project:	SEC.26-T5N-R66W	TVD Reference:	WELL @ 4763.0ft (RKB - 15')
Reference Site:	SRC Evans Center Pad Sec.26-T5N-R66W	MD Reference:	WELL @ 4763.0ft (RKB - 15')
Site Error:	0.0ft	North Reference:	True
Reference Well:	SRC Evans P-26-23-14CHZ	Survey Calculation Method:	Minimum Curvature
Well Error:	0.0ft	Output errors are at	2.00 sigma
Reference Wellbore	Wellbore #1	Database:	Landmark
Reference Design:	Plan #1 (10-27-14)	Offset TVD Reference:	Offset Datum

Offset Design													Offset Site Error:	0.0 ft
Survey Program: 0-MWD													Offset Well Error:	0.0 ft
Reference		Offset		Semi Major Axis			Distance							Warning
Measured Depth (ft)	Vertical Depth (ft)	Measured Depth (ft)	Vertical Depth (ft)	Reference (ft)	Offset (ft)	Highside Toolface (°)	Offset Wellbore Centre +N/-S (ft)	+E/-W (ft)	Between Centres (ft)	Between Ellipses (ft)	Minimum Separation (ft)	Separation Factor		
0.0	0.0	1.0	1.0	0.0	0.0	-0.35	45.2	-0.3	45.2	45.2	0.00	N/A		
100.0	100.0	101.0	101.0	0.1	0.1	-0.35	45.2	-0.3	45.2	44.9	0.23	198.998		
200.0	200.0	201.0	201.0	0.3	0.3	-0.35	45.2	-0.3	45.2	44.5	0.68	66.774		
300.0	300.0	301.0	301.0	0.6	0.6	-0.35	45.2	-0.3	45.2	44.0	1.13	40.117		
400.0	400.0	401.0	401.0	0.8	0.8	-0.35	45.2	-0.3	45.2	43.6	1.58	28.672		
500.0	500.0	501.0	501.0	1.0	1.0	-0.35	45.2	-0.3	45.2	43.2	2.03	22.307		
600.0	600.0	601.0	601.0	1.2	1.2	-0.35	45.2	-0.3	45.2	42.7	2.47	18.255		
700.0	700.0	701.0	701.0	1.5	1.5	-0.35	45.2	-0.3	45.2	42.3	2.92	15.449		
800.0	800.0	801.0	801.0	1.7	1.7	-0.35	45.2	-0.3	45.2	41.8	3.37	13.390 CC, ES		
900.0	900.0	901.0	901.0	1.9	1.9	-155.86	45.2	-0.3	46.8	43.0	3.80	12.315		
1,000.0	999.8	1,000.8	1,000.8	2.1	2.1	-158.20	45.2	-0.3	51.6	47.4	4.20	12.279		
1,100.0	1,099.5	1,100.5	1,100.5	2.3	2.4	-161.25	45.2	-0.3	59.8	55.2	4.61	12.962		
1,203.7	1,202.4	1,203.5	1,203.5	2.5	2.6	-164.44	45.2	-0.3	71.9	66.9	5.04	14.273		
1,300.0	1,297.7	1,301.3	1,301.3	2.8	2.8	-166.37	43.8	0.9	83.5	78.1	5.43	15.380		
1,400.0	1,396.7	1,403.7	1,403.5	3.0	3.0	-166.89	39.6	4.4	92.5	86.7	5.82	15.882		
1,500.0	1,495.7	1,506.6	1,506.0	3.3	3.2	-166.33	32.6	10.2	98.3	92.1	6.24	15.760		
1,600.0	1,594.7	1,609.7	1,608.3	3.6	3.4	-164.83	22.7	18.5	101.0	94.3	6.68	15.130		
1,700.0	1,693.7	1,712.7	1,710.0	3.9	3.7	-162.33	10.1	29.1	100.7	93.6	7.15	14.094		
1,800.0	1,792.8	1,815.4	1,810.7	4.3	4.0	-158.60	-5.4	41.9	97.6	90.0	7.66	12.748		
1,900.0	1,891.8	1,915.1	1,908.0	4.6	4.3	-154.06	-21.7	55.6	93.6	85.4	8.22	11.380		
2,000.0	1,990.8	2,014.7	2,005.4	4.9	4.7	-149.15	-38.0	69.2	90.2	81.3	8.85	10.191		
2,100.0	2,089.8	2,114.3	2,102.7	5.3	5.0	-143.89	-54.3	82.8	87.5	78.0	9.54	9.171		
2,200.0	2,188.8	2,213.9	2,200.0	5.6	5.4	-138.36	-70.7	96.5	85.6	75.3	10.30	8.311		
2,300.0	2,287.8	2,313.6	2,297.4	5.9	5.8	-132.63	-87.0	110.1	84.5	73.4	11.12	7.603		
2,373.0	2,360.1	2,386.3	2,368.4	6.2	6.1	-128.39	-98.9	120.1	84.3	72.5	11.74	7.177		
2,400.0	2,386.8	2,413.2	2,394.7	6.3	6.3	-126.81	-103.3	123.7	84.3	72.3	11.98	7.038		
2,500.0	2,485.8	2,512.8	2,492.0	6.6	6.7	-121.03	-119.6	137.4	85.0	72.1	12.87	6.604		
2,600.0	2,584.8	2,612.5	2,589.4	6.9	7.1	-115.39	-135.9	151.0	86.5	72.8	13.77	6.285		
2,700.0	2,683.8	2,712.1	2,686.7	7.3	7.5	-110.00	-152.3	164.6	88.9	74.2	14.65	6.066		
2,800.0	2,782.8	2,811.7	2,784.0	7.6	8.0	-104.92	-168.6	178.3	91.9	76.4	15.51	5.929		
2,900.0	2,881.8	2,911.4	2,881.4	8.0	8.4	-100.21	-184.9	191.9	95.7	79.4	16.34	5.859		
3,000.0	2,980.9	3,011.0	2,978.7	8.3	8.9	-95.88	-201.2	205.5	100.1	82.9	17.13	5.842		
3,100.0	3,079.9	3,110.6	3,076.0	8.7	9.3	-91.92	-217.6	219.2	104.9	87.1	17.89	5.868		
3,200.0	3,178.9	3,210.2	3,173.4	9.0	9.8	-88.34	-233.9	232.8	110.3	91.7	18.61	5.925		
3,300.0	3,277.9	3,309.9	3,270.7	9.4	10.2	-85.09	-250.2	246.4	116.0	96.7	19.31	6.007		
3,400.0	3,376.9	3,409.5	3,368.0	9.7	10.7	-82.16	-266.5	260.1	122.1	102.1	19.99	6.107		
3,500.0	3,475.9	3,509.1	3,465.4	10.1	11.1	-79.51	-282.8	273.7	128.4	107.8	20.65	6.220		
3,600.0	3,574.9	3,608.8	3,562.7	10.4	11.6	-77.11	-299.2	287.3	135.1	113.8	21.29	6.343		
3,700.0	3,673.9	3,708.4	3,660.0	10.8	12.1	-74.94	-315.5	301.0	141.9	119.9	21.93	6.471		
3,800.0	3,772.9	3,808.0	3,757.4	11.1	12.5	-72.97	-331.8	314.6	148.9	126.3	22.55	6.603		
3,900.0	3,871.9	3,907.6	3,854.7	11.5	13.0	-71.18	-348.1	328.2	156.0	132.9	23.16	6.737		
4,000.0	3,970.9	4,007.3	3,952.0	11.8	13.4	-69.55	-364.5	341.9	163.3	139.6	23.77	6.871		
4,100.0	4,070.0	4,106.9	4,049.4	12.2	13.9	-68.06	-380.8	355.5	170.8	146.4	24.38	7.005		
4,200.0	4,169.0	4,206.5	4,146.7	12.5	14.4	-66.69	-397.1	369.2	178.3	153.3	24.98	7.138		
4,300.0	4,268.0	4,306.2	4,244.0	12.9	14.8	-65.43	-413.4	382.8	185.9	160.3	25.58	7.269		
4,400.0	4,367.0	4,405.8	4,341.4	13.2	15.3	-64.28	-429.8	396.4	193.6	167.5	26.17	7.398		
4,500.0	4,466.0	4,505.4	4,438.7	13.6	15.8	-63.21	-446.1	410.1	201.4	174.6	26.77	7.523		
4,600.0	4,565.0	4,605.1	4,536.0	13.9	16.2	-62.22	-462.4	423.7	209.2	181.9	27.36	7.646		
4,700.0	4,664.0	4,704.7	4,633.4	14.3	16.7	-61.30	-478.7	437.3	217.1	189.2	27.96	7.766		
4,800.0	4,763.0	4,804.3	4,730.7	14.6	17.2	-60.45	-495.0	451.0	225.1	196.5	28.55	7.883		
4,900.0	4,862.0	4,903.9	4,828.0	15.0	17.6	-59.66	-511.4	464.6	233.1	203.9	29.15	7.997		
5,000.0	4,961.0	5,003.6	4,925.4	15.3	18.1	-58.92	-527.7	478.2	241.1	211.4	29.74	8.108		

CC - Min centre to center distance or convergent point, SF - min separation factor, ES - min ellipse separation

Company:	Synergy Resources	Local Co-ordinate Reference:	Well SRC Evans P-26-23-14CHZ
Project:	SEC.26-T5N-R66W	TVD Reference:	WELL @ 4763.0ft (RKB - 15')
Reference Site:	SRC Evans Center Pad Sec.26-T5N-R66W	MD Reference:	WELL @ 4763.0ft (RKB - 15')
Site Error:	0.0ft	North Reference:	True
Reference Well:	SRC Evans P-26-23-14CHZ	Survey Calculation Method:	Minimum Curvature
Well Error:	0.0ft	Output errors are at	2.00 sigma
Reference Wellbore	Wellbore #1	Database:	Landmark
Reference Design:	Plan #1 (10-27-14)	Offset TVD Reference:	Offset Datum

Offset Design													Offset Site Error:	0.0 ft
Survey Program: 0-MWD													Offset Well Error:	0.0 ft
Reference		Offset		Semi Major Axis			Distance						Warning	
Measured Depth (ft)	Vertical Depth (ft)	Measured Depth (ft)	Vertical Depth (ft)	Reference (ft)	Offset (ft)	Highside Toolface (°)	Offset Wellbore Centre +N/-S (ft)	+E/-W (ft)	Between Centres (ft)	Between Ellipses (ft)	Minimum Separation (ft)	Separation Factor		
5,100.0	5,060.0	5,103.2	5,022.7	15.7	18.6	-58.22	-544.0	491.9	249.2	218.9	30.33	8.215		
5,200.0	5,159.0	5,202.8	5,120.0	16.0	19.0	-57.57	-560.3	505.5	257.3	226.4	30.93	8.320		
5,300.0	5,258.1	5,302.5	5,217.4	16.4	19.5	-56.96	-576.7	519.1	265.5	233.9	31.52	8.421		
5,400.0	5,357.1	5,402.1	5,314.7	16.7	20.0	-56.39	-593.0	532.8	273.6	241.5	32.12	8.520		
5,500.0	5,456.1	5,503.6	5,413.9	17.1	20.4	-55.86	-609.5	546.6	281.7	249.0	32.70	8.615		
5,600.0	5,555.1	5,611.5	5,519.9	17.4	20.8	-55.70	-624.9	559.4	287.9	254.6	33.28	8.649		
5,700.0	5,654.1	5,719.6	5,626.8	17.8	21.1	-56.08	-637.3	569.8	291.2	257.2	33.94	8.579		
5,800.0	5,753.1	5,827.7	5,734.2	18.2	21.3	-56.98	-646.5	577.5	291.7	257.0	34.67	8.413		
5,900.0	5,852.1	5,935.4	5,841.6	18.5	21.5	-58.43	-652.7	582.6	289.6	254.1	35.48	8.161		
5,946.0	5,897.6	5,984.7	5,890.8	18.7	21.6	-59.29	-654.4	584.1	287.7	251.9	35.88	8.019		
6,000.0	5,951.2	6,042.5	5,948.6	18.8	21.7	-60.33	-655.7	585.1	285.2	248.9	36.32	7.854		
6,100.0	6,050.6	6,145.5	6,051.6	19.0	21.8	-62.10	-656.0	585.4	280.5	243.5	36.99	7.582		
6,200.0	6,150.4	6,245.3	6,151.4	19.2	21.9	-63.31	-656.0	585.4	277.3	239.8	37.51	7.392		
6,300.0	6,250.3	6,345.1	6,251.0	19.4	22.0	-65.30	-649.4	585.4	275.7	237.6	38.07	7.242		
6,322.6	6,272.9	6,367.2	6,272.8	19.4	22.0	-66.05	-646.1	585.4	275.6	237.4	38.22	7.211		
6,349.7	6,300.0	6,393.6	6,298.7	19.5	22.0	87.53	-641.2	585.4	275.8	237.3	38.40	7.180		
6,400.0	6,350.3	6,441.3	6,345.1	19.5	21.9	85.21	-630.0	585.4	276.5	237.7	38.81	7.124		
6,500.0	6,450.3	6,530.9	6,429.7	19.7	21.8	79.24	-600.7	585.3	281.2	241.5	39.65	7.091		
6,533.5	6,483.8	6,559.1	6,455.5	19.7	21.7	76.97	-589.4	585.3	284.2	244.2	39.91	7.120		
6,550.0	6,500.3	6,572.7	6,467.8	19.7	21.7	75.84	-583.5	585.3	285.9	245.9	40.06	7.138		
6,600.0	6,550.2	6,613.3	6,503.8	19.8	21.6	72.15	-564.7	585.2	292.1	251.8	40.36	7.237		
6,650.0	6,599.8	6,650.0	6,535.3	19.8	21.5	68.89	-546.0	585.2	299.4	258.9	40.49	7.393		
6,700.0	6,648.8	6,692.4	6,570.5	19.8	21.4	65.39	-522.3	585.1	307.4	266.9	40.46	7.598		
6,750.0	6,697.0	6,731.0	6,601.3	19.7	21.3	62.36	-499.0	585.1	316.1	275.8	40.25	7.853		
6,800.0	6,744.2	6,769.0	6,630.3	19.6	21.1	59.56	-474.5	585.0	325.2	285.3	39.88	8.153		
6,850.0	6,790.1	6,806.5	6,657.6	19.6	21.0	56.99	-448.8	584.9	334.5	295.2	39.37	8.498		
6,900.0	6,834.5	6,843.6	6,683.3	19.4	20.9	54.65	-422.1	584.9	343.9	305.2	38.71	8.884		
6,950.0	6,877.2	6,880.3	6,707.3	19.3	20.7	52.53	-394.4	584.8	353.3	315.4	37.95	9.311		
7,000.0	6,918.0	6,916.6	6,729.6	19.2	20.6	50.61	-365.7	584.8	362.5	325.4	37.09	9.774		
7,050.0	6,956.7	6,950.0	6,748.9	19.1	20.5	48.96	-338.4	584.7	371.4	335.2	36.17	10.268		
7,100.0	6,993.1	6,988.2	6,769.3	18.9	20.4	47.34	-306.1	584.6	379.9	344.7	35.18	10.800		
7,150.0	7,026.9	7,023.7	6,786.6	18.8	20.2	45.97	-275.2	584.5	387.9	353.8	34.18	11.351		
7,200.0	7,058.2	7,058.8	6,802.3	18.6	20.1	44.75	-243.7	584.5	395.4	362.2	33.19	11.915		
7,250.0	7,086.6	7,100.0	6,818.7	18.5	19.9	43.58	-206.0	584.4	402.4	370.2	32.20	12.496		
7,300.0	7,112.1	7,128.6	6,828.8	18.4	19.9	42.77	-179.2	584.3	408.5	377.2	31.35	13.030		
7,350.0	7,134.6	7,163.3	6,839.6	18.3	19.7	41.99	-146.2	584.3	414.1	383.5	30.57	13.545		
7,400.0	7,153.9	7,200.0	6,849.3	18.2	19.6	41.30	-110.8	584.2	418.8	388.9	29.91	14.005		
7,450.0	7,169.9	7,232.3	6,856.3	18.2	19.5	40.79	-79.3	584.1	422.8	393.4	29.41	14.375		
7,500.0	7,182.5	7,266.6	6,862.2	18.2	19.4	40.37	-45.5	584.0	426.0	396.9	29.09	14.643		
7,550.0	7,191.8	7,300.0	6,866.3	18.3	19.3	40.07	-12.4	583.9	428.4	399.4	28.96	14.791		
7,600.0	7,197.6	7,335.1	6,869.0	18.4	19.2	39.87	22.6	583.9	429.9	400.9	29.04	14.804		
7,650.0	7,199.9	7,372.7	6,870.0	18.5	19.1	39.77	60.2	583.8	430.6	401.3	29.33	14.682		
7,651.8	7,200.0	7,372.7	6,870.0	18.6	19.1	39.77	60.2	583.8	430.6	401.3	29.34	14.678		
7,658.5	7,200.0	7,376.2	6,870.0	18.6	19.1	39.77	63.7	583.8	430.7	401.3	29.39	14.653		
7,700.0	7,200.0	7,417.8	6,870.0	18.8	19.0	39.77	105.2	583.7	430.7	400.9	29.80	14.450		
7,800.0	7,200.0	7,517.8	6,870.0	19.4	19.0	39.77	205.2	583.4	430.7	399.7	30.93	13.926		
7,900.0	7,200.0	7,617.8	6,870.0	20.2	19.7	39.77	305.2	583.2	430.7	398.4	32.24	13.359		
8,000.0	7,200.0	7,717.8	6,870.0	21.2	20.7	39.77	405.2	583.0	430.7	396.9	33.72	12.773		
8,100.0	7,200.0	7,817.8	6,870.0	22.3	21.8	39.77	505.2	582.8	430.7	395.3	35.34	12.186		
8,200.0	7,200.0	7,917.8	6,870.0	23.5	23.0	39.77	605.2	582.5	430.7	393.6	37.09	11.611		
8,300.0	7,200.0	8,017.8	6,870.0	24.8	24.4	39.77	705.2	582.3	430.7	391.7	38.95	11.056		
8,400.0	7,200.0	8,117.8	6,870.0	26.2	25.7	39.77	805.2	582.1	430.7	389.7	40.91	10.528		

CC - Min centre to center distance or convergent point, SF - min separation factor, ES - min ellipse separation

Company:	Synergy Resources	Local Co-ordinate Reference:	Well SRC Evans P-26-23-14CHZ
Project:	SEC.26-T5N-R66W	TVD Reference:	WELL @ 4763.0ft (RKB - 15')
Reference Site:	SRC Evans Center Pad Sec.26-T5N-R66W	MD Reference:	WELL @ 4763.0ft (RKB - 15')
Site Error:	0.0ft	North Reference:	True
Reference Well:	SRC Evans P-26-23-14CHZ	Survey Calculation Method:	Minimum Curvature
Well Error:	0.0ft	Output errors are at	2.00 sigma
Reference Wellbore	Wellbore #1	Database:	Landmark
Reference Design:	Plan #1 (10-27-14)	Offset TVD Reference:	Offset Datum

Offset Design													Offset Site Error:	0.0 ft
Survey Program: 0-MWD													Offset Well Error:	0.0 ft
Reference		Offset		Semi Major Axis			Distance							Warning
Measured Depth (ft)	Vertical Depth (ft)	Measured Depth (ft)	Vertical Depth (ft)	Reference (ft)	Offset (ft)	Highside Toolface (°)	Offset Wellbore Centre +N/-S (ft)	+E/-W (ft)	Between Centres (ft)	Between Ellipses (ft)	Minimum Separation (ft)	Separation Factor		
8,500.0	7,200.0	8,217.8	6,870.0	27.7	27.2	39.77	905.2	581.8	430.7	387.7	42.94	10.029		
8,600.0	7,200.0	8,317.8	6,870.0	29.2	28.7	39.77	1,005.2	581.6	430.7	385.6	45.05	9.560		
8,700.0	7,200.0	8,417.8	6,870.0	30.7	30.2	39.77	1,105.2	581.4	430.7	383.4	47.22	9.121		
8,800.0	7,200.0	8,517.8	6,870.0	32.3	31.8	39.77	1,205.2	581.1	430.7	381.2	49.44	8.711		
8,900.0	7,200.0	8,617.8	6,870.0	33.9	33.4	39.77	1,305.2	580.9	430.7	378.9	51.71	8.329		
9,000.0	7,200.0	8,717.8	6,870.0	35.6	35.0	39.77	1,405.2	580.7	430.7	376.6	54.01	7.973		
9,100.0	7,200.0	8,817.8	6,870.0	37.2	36.7	39.77	1,505.2	580.5	430.7	374.3	56.36	7.641		
9,200.0	7,200.0	8,917.8	6,870.0	38.9	38.4	39.77	1,605.2	580.2	430.7	371.9	58.73	7.333		
9,300.0	7,200.0	9,017.8	6,870.0	40.6	40.1	39.77	1,705.2	580.0	430.7	369.5	61.13	7.044		
9,400.0	7,200.0	9,117.8	6,870.0	42.4	41.8	39.77	1,805.2	579.8	430.6	367.1	63.56	6.775		
9,500.0	7,200.0	9,217.8	6,870.0	44.1	43.6	39.77	1,905.2	579.5	430.6	364.6	66.01	6.524		
9,600.0	7,200.0	9,317.8	6,870.0	45.9	45.3	39.77	2,005.2	579.3	430.6	362.2	68.48	6.289		
9,700.0	7,200.0	9,417.8	6,870.0	47.6	47.1	39.77	2,105.2	579.1	430.6	359.7	70.96	6.069		
9,800.0	7,200.0	9,517.8	6,870.0	49.4	48.8	39.77	2,205.2	578.9	430.6	357.2	73.46	5.862		
9,900.0	7,200.0	9,617.8	6,870.0	51.2	50.6	39.77	2,305.2	578.6	430.6	354.7	75.98	5.668		
10,000.0	7,200.0	9,717.8	6,870.0	53.0	52.4	39.77	2,405.2	578.4	430.6	352.1	78.50	5.486		
10,100.0	7,200.0	9,817.8	6,870.0	54.8	54.2	39.77	2,505.2	578.2	430.6	349.6	81.04	5.314		
10,200.0	7,200.0	9,917.8	6,870.0	56.7	56.0	39.77	2,605.2	577.9	430.6	347.1	83.59	5.152		
10,300.0	7,200.0	10,017.8	6,870.0	58.5	57.9	39.77	2,705.2	577.7	430.6	344.5	86.15	4.999		
10,400.0	7,200.0	10,117.8	6,870.0	60.3	59.7	39.77	2,805.2	577.5	430.6	341.9	88.72	4.854		
10,500.0	7,200.0	10,217.8	6,870.0	62.1	61.5	39.77	2,905.2	577.2	430.6	339.3	91.30	4.717		
10,600.0	7,200.0	10,317.8	6,870.0	64.0	63.3	39.77	3,005.2	577.0	430.6	336.8	93.88	4.587		
10,700.0	7,200.0	10,417.8	6,870.0	65.8	65.2	39.77	3,105.2	576.8	430.6	334.2	96.47	4.464		
10,800.0	7,200.0	10,517.8	6,870.0	67.7	67.0	39.77	3,205.2	576.6	430.6	331.6	99.06	4.347		
10,900.0	7,200.0	10,617.8	6,870.0	69.5	68.9	39.77	3,305.2	576.3	430.6	329.0	101.67	4.236		
11,000.0	7,200.0	10,717.8	6,870.0	71.4	70.7	39.77	3,405.2	576.1	430.6	326.4	104.27	4.130		
11,100.0	7,200.0	10,817.8	6,870.0	73.2	72.6	39.77	3,505.2	575.9	430.6	323.8	106.89	4.029		
11,200.0	7,200.0	10,917.8	6,870.0	75.1	74.4	39.77	3,605.2	575.6	430.6	321.1	109.50	3.933		
11,300.0	7,200.0	11,017.8	6,870.0	77.0	76.3	39.77	3,705.2	575.4	430.6	318.5	112.12	3.841		
11,400.0	7,200.0	11,117.8	6,870.0	78.8	78.2	39.77	3,805.2	575.2	430.6	315.9	114.75	3.753		
11,500.0	7,200.0	11,217.8	6,870.0	80.7	80.0	39.77	3,905.2	574.9	430.6	313.3	117.38	3.669		
11,600.0	7,200.0	11,317.8	6,870.0	82.6	81.9	39.77	4,005.2	574.7	430.6	310.6	120.01	3.588		
11,700.0	7,200.0	11,417.8	6,870.0	84.5	83.8	39.77	4,105.2	574.5	430.6	308.0	122.64	3.511		
11,800.0	7,200.0	11,517.8	6,870.0	86.3	85.6	39.77	4,205.2	574.3	430.6	305.4	125.28	3.437		
11,900.0	7,200.0	11,617.8	6,870.0	88.2	87.5	39.77	4,305.2	574.0	430.6	302.7	127.92	3.366		
12,000.0	7,200.0	11,717.8	6,870.0	90.1	89.4	39.77	4,405.2	573.8	430.6	300.1	130.57	3.298		
12,100.0	7,200.0	11,817.8	6,870.0	92.0	91.3	39.77	4,505.2	573.6	430.6	297.4	133.21	3.233		
12,200.0	7,200.0	11,917.8	6,870.0	93.9	93.2	39.77	4,605.2	573.3	430.6	294.8	135.86	3.170		
12,300.0	7,200.0	12,017.8	6,870.0	95.8	95.0	39.77	4,705.2	573.1	430.6	292.1	138.51	3.109		
12,400.0	7,200.0	12,117.8	6,870.0	97.6	96.9	39.77	4,805.2	572.9	430.6	289.5	141.16	3.051		
12,500.0	7,200.0	12,217.8	6,870.0	99.5	98.8	39.77	4,905.2	572.6	430.6	286.8	143.82	2.994		
12,600.0	7,200.0	12,317.8	6,870.0	101.4	100.7	39.77	5,005.2	572.4	430.6	284.2	146.47	2.940		
12,700.0	7,200.0	12,417.8	6,870.0	103.3	102.6	39.77	5,105.2	572.2	430.6	281.5	149.13	2.888		
12,800.0	7,200.0	12,517.8	6,870.0	105.2	104.5	39.77	5,205.2	572.0	430.6	278.8	151.79	2.837		
12,900.0	7,200.0	12,617.8	6,870.0	107.1	106.4	39.77	5,305.2	571.7	430.6	276.2	154.45	2.788		
13,000.0	7,200.0	12,717.8	6,870.0	109.0	108.3	39.77	5,405.2	571.5	430.6	273.5	157.12	2.741		
13,100.0	7,200.0	12,817.8	6,870.0	110.9	110.1	39.77	5,505.2	571.3	430.6	270.9	159.78	2.695		
13,200.0	7,200.0	12,917.8	6,870.0	112.8	112.0	39.77	5,605.2	571.0	430.6	268.2	162.45	2.651		
13,300.0	7,200.0	13,017.8	6,870.0	114.7	113.9	39.77	5,705.2	570.8	430.6	265.5	165.12	2.608		
13,400.0	7,200.0	13,117.8	6,870.0	116.6	115.8	39.77	5,805.2	570.6	430.6	262.8	167.78	2.567		
13,500.0	7,200.0	13,217.8	6,870.0	118.5	117.7	39.77	5,905.2	570.4	430.6	260.2	170.45	2.526		
13,600.0	7,200.0	13,317.8	6,870.0	120.4	119.6	39.77	6,005.2	570.1	430.6	257.5	173.12	2.487		

CC - Min centre to center distance or convergent point, SF - min separation factor, ES - min ellipse separation

Company:	Synergy Resources	Local Co-ordinate Reference:	Well SRC Evans P-26-23-14CHZ
Project:	SEC.26-T5N-R66W	TVD Reference:	WELL @ 4763.0ft (RKB - 15')
Reference Site:	SRC Evans Center Pad Sec.26-T5N-R66W	MD Reference:	WELL @ 4763.0ft (RKB - 15')
Site Error:	0.0ft	North Reference:	True
Reference Well:	SRC Evans P-26-23-14CHZ	Survey Calculation Method:	Minimum Curvature
Well Error:	0.0ft	Output errors are at	2.00 sigma
Reference Wellbore	Wellbore #1	Database:	Landmark
Reference Design:	Plan #1 (10-27-14)	Offset TVD Reference:	Offset Datum

Offset Design												Offset Site Error:	0.0 ft
Survey Program: 0-MWD												Offset Well Error:	0.0 ft
Reference		Offset		Semi Major Axis			Distance						Warning
Measured Depth (ft)	Vertical Depth (ft)	Measured Depth (ft)	Vertical Depth (ft)	Reference (ft)	Offset (ft)	Highside Toolface (°)	Offset Wellbore Centre +N/-S (ft)	+E/-W (ft)	Between Centres (ft)	Between Ellipses (ft)	Minimum Separation (ft)	Separation Factor	
13,700.0	7,200.0	13,417.8	6,870.0	122.3	121.5	39.77	6,105.2	569.9	430.6	254.8	175.80	2.450	
13,800.0	7,200.0	13,517.8	6,870.0	124.2	123.4	39.77	6,205.2	569.7	430.6	252.2	178.47	2.413	
13,900.0	7,200.0	13,617.8	6,870.0	126.1	125.3	39.77	6,305.2	569.4	430.6	249.5	181.14	2.377	
14,000.0	7,200.0	13,717.8	6,870.0	128.0	127.2	39.77	6,405.2	569.2	430.6	246.8	183.82	2.343	
14,100.0	7,200.0	13,817.8	6,870.0	129.9	129.1	39.77	6,505.2	569.0	430.6	244.1	186.49	2.309	
14,200.0	7,200.0	13,917.8	6,870.0	131.8	131.0	39.77	6,605.2	568.7	430.6	241.5	189.17	2.276	
14,300.0	7,200.0	14,017.8	6,870.0	133.7	132.9	39.77	6,705.2	568.5	430.6	238.8	191.85	2.245	
14,400.0	7,200.0	14,117.8	6,870.0	135.6	134.8	39.77	6,805.2	568.3	430.6	236.1	194.52	2.214	
14,500.0	7,200.0	14,217.8	6,870.0	137.5	136.7	39.77	6,905.2	568.1	430.6	233.4	197.20	2.184	
14,600.0	7,200.0	14,317.8	6,870.0	139.4	138.6	39.77	7,005.2	567.8	430.6	230.7	199.88	2.154	
14,700.0	7,200.0	14,417.8	6,870.0	141.3	140.5	39.77	7,105.2	567.6	430.6	228.1	202.56	2.126	
14,800.0	7,200.0	14,517.8	6,870.0	143.2	142.4	39.77	7,205.2	567.4	430.6	225.4	205.24	2.098	
14,900.0	7,200.0	14,617.8	6,870.0	145.1	144.3	39.77	7,305.2	567.1	430.6	222.7	207.93	2.071	
15,000.0	7,200.0	14,717.8	6,870.0	147.0	146.2	39.77	7,405.2	566.9	430.6	220.0	210.61	2.045	
15,100.0	7,200.0	14,817.8	6,870.0	148.9	148.1	39.77	7,505.2	566.7	430.6	217.3	213.29	2.019	
15,200.0	7,200.0	14,917.8	6,870.0	150.8	150.0	39.77	7,605.2	566.4	430.6	214.6	215.97	1.994	
15,300.0	7,200.0	15,017.8	6,870.0	152.7	152.0	39.77	7,705.2	566.2	430.6	212.0	218.66	1.969	
15,400.0	7,200.0	15,117.8	6,870.0	154.6	153.9	39.77	7,805.2	566.0	430.6	209.3	221.34	1.946	
15,500.0	7,200.0	15,217.8	6,870.0	156.6	155.8	39.77	7,905.2	565.8	430.6	206.6	224.03	1.922	
15,600.0	7,200.0	15,317.8	6,870.0	158.5	157.7	39.77	8,005.2	565.5	430.6	203.9	226.71	1.899	
15,700.0	7,200.0	15,417.8	6,870.0	160.4	159.6	39.77	8,105.2	565.3	430.6	201.2	229.40	1.877	
15,800.0	7,200.0	15,517.8	6,870.0	162.3	161.5	39.77	8,205.2	565.1	430.6	198.5	232.08	1.855	
15,900.0	7,200.0	15,617.8	6,870.0	164.2	163.4	39.77	8,305.2	564.8	430.6	195.8	234.77	1.834	
16,000.0	7,200.0	15,717.8	6,870.0	166.1	165.3	39.77	8,405.2	564.6	430.6	193.2	237.46	1.813	
16,100.0	7,200.0	15,817.8	6,870.0	168.0	167.2	39.77	8,505.2	564.4	430.6	190.5	240.15	1.793	
16,200.0	7,200.0	15,917.8	6,870.0	169.9	169.1	39.77	8,605.2	564.2	430.6	187.8	242.83	1.773	
16,300.0	7,200.0	16,017.8	6,870.0	171.8	171.0	39.77	8,705.2	563.9	430.6	185.1	245.52	1.754	
16,400.0	7,200.0	16,117.8	6,870.0	173.7	172.9	39.77	8,805.2	563.7	430.6	182.4	248.21	1.735	
16,500.0	7,200.0	16,217.8	6,870.0	175.6	174.8	39.77	8,905.2	563.5	430.6	179.7	250.90	1.716	
16,600.0	7,200.0	16,317.8	6,870.0	177.6	176.8	39.77	9,005.2	563.2	430.6	177.0	253.59	1.698	
16,700.0	7,200.0	16,417.8	6,870.0	179.5	178.7	39.77	9,105.2	563.0	430.6	174.3	256.28	1.680	
16,800.0	7,200.0	16,517.8	6,870.0	181.4	180.6	39.77	9,205.2	562.8	430.6	171.6	258.97	1.663	
16,900.0	7,200.0	16,617.8	6,870.0	183.3	182.5	39.77	9,305.2	562.5	430.6	169.0	261.66	1.646	
16,964.3	7,200.0	16,682.0	6,870.0	184.5	183.7	39.77	9,369.5	562.4	430.6	167.2	263.39	1.635	
16,995.0	7,200.0	16,701.9	6,870.0	185.1	184.1	39.77	9,389.4	562.4	430.8	166.7	264.07	1.631 SF	

Company:	Synergy Resources	Local Co-ordinate Reference:	Well SRC Evans P-26-23-14CHZ
Project:	SEC.26-T5N-R66W	TVD Reference:	WELL @ 4763.0ft (RKB - 15')
Reference Site:	SRC Evans Center Pad Sec.26-T5N-R66W	MD Reference:	WELL @ 4763.0ft (RKB - 15')
Site Error:	0.0ft	North Reference:	True
Reference Well:	SRC Evans P-26-23-14CHZ	Survey Calculation Method:	Minimum Curvature
Well Error:	0.0ft	Output errors are at	2.00 sigma
Reference Wellbore	Wellbore #1	Database:	Landmark
Reference Design:	Plan #1 (10-27-14)	Offset TVD Reference:	Offset Datum

Offset Design													Offset Site Error:	0.0 ft
Survey Program: 0-MWD													Offset Well Error:	0.0 ft
Reference		Offset		Semi Major Axis			Distance							Warning
Measured Depth (ft)	Vertical Depth (ft)	Measured Depth (ft)	Vertical Depth (ft)	Reference (ft)	Offset (ft)	Highside Toolface (°)	Offset Wellbore Centre +N/-S (ft)	+E/-W (ft)	Between Centres (ft)	Between Ellipses (ft)	Minimum Separation (ft)	Separation Factor		
0.0	0.0	0.0	0.0	0.0	0.0	0.00	22.6	0.0	22.6					
100.0	100.0	100.0	100.0	0.1	0.1	0.00	22.6	0.0	22.6	22.4	0.22	100.492		
200.0	200.0	200.0	200.0	0.3	0.3	0.00	22.6	0.0	22.6	21.9	0.67	33.497		
300.0	300.0	300.0	300.0	0.6	0.6	0.00	22.6	0.0	22.6	21.5	1.12	20.098		
400.0	400.0	400.0	400.0	0.8	0.8	0.00	22.6	0.0	22.6	21.0	1.57	14.356		
500.0	500.0	500.0	500.0	1.0	1.0	0.00	22.6	0.0	22.6	20.6	2.02	11.166		
600.0	600.0	600.0	600.0	1.2	1.2	0.00	22.6	0.0	22.6	20.1	2.47	9.136		
700.0	700.0	700.0	700.0	1.5	1.5	0.00	22.6	0.0	22.6	19.7	2.92	7.730		
800.0	800.0	800.0	800.0	1.7	1.7	0.00	22.6	0.0	22.6	19.2	3.37	6.699 CC, ES		
900.0	900.0	900.0	900.0	1.9	1.9	-156.38	22.6	0.0	24.2	20.4	3.79	6.371 SF		
1,000.0	999.8	999.8	999.8	2.1	2.1	-160.48	22.6	0.0	29.0	24.8	4.20	6.918		
1,100.0	1,099.5	1,100.1	1,100.0	2.3	2.3	-167.33	21.5	-1.3	36.6	32.0	4.58	7.974		
1,203.7	1,202.4	1,203.6	1,203.4	2.5	2.5	-176.72	18.0	-5.6	47.1	42.1	4.97	9.477		
1,300.0	1,297.7	1,299.2	1,298.7	2.8	2.7	174.64	12.6	-12.0	58.7	53.4	5.36	10.955		
1,400.0	1,396.7	1,398.1	1,396.8	3.0	3.0	166.08	4.9	-21.2	71.6	65.8	5.80	12.335		
1,500.0	1,495.7	1,496.3	1,493.8	3.3	3.2	157.97	-4.8	-33.0	85.9	79.6	6.30	13.641		
1,600.0	1,594.7	1,593.5	1,589.3	3.6	3.5	150.46	-16.6	-47.1	102.3	95.5	6.85	14.931		
1,700.0	1,693.7	1,690.6	1,684.1	3.9	3.8	143.89	-29.9	-63.2	120.9	113.5	7.45	16.220		
1,800.0	1,792.8	1,788.0	1,779.1	4.3	4.2	138.99	-43.5	-79.5	140.7	132.7	8.08	17.428		
1,900.0	1,891.8	1,885.4	1,874.2	4.6	4.6	135.31	-57.0	-95.8	161.3	152.6	8.71	18.525		
2,000.0	1,990.8	1,982.8	1,969.3	4.9	5.0	132.46	-70.5	-112.1	182.4	173.0	9.35	19.510		
2,100.0	2,089.8	2,080.2	2,064.3	5.3	5.4	130.21	-84.1	-128.3	203.8	193.8	10.00	20.390		
2,200.0	2,188.8	2,177.6	2,159.4	5.6	5.8	128.38	-97.6	-144.6	225.5	214.8	10.65	21.176		
2,300.0	2,287.8	2,275.0	2,254.5	5.9	6.2	126.88	-111.1	-160.9	247.3	236.0	11.30	21.878		
2,400.0	2,386.8	2,372.4	2,349.5	6.3	6.7	125.62	-124.6	-177.2	269.3	257.3	11.96	22.509		
2,500.0	2,485.8	2,469.8	2,444.6	6.6	7.1	124.54	-138.2	-193.5	291.4	278.7	12.63	23.076		
2,600.0	2,584.8	2,567.2	2,539.7	6.9	7.6	123.62	-151.7	-209.8	313.5	300.2	13.29	23.589		
2,700.0	2,683.8	2,664.6	2,634.7	7.3	8.0	122.83	-165.2	-226.1	335.8	321.8	13.96	24.053		
2,800.0	2,782.8	2,761.9	2,729.8	7.6	8.4	122.13	-178.8	-242.4	358.1	343.4	14.63	24.476		
2,900.0	2,881.8	2,859.3	2,824.9	8.0	8.9	121.51	-192.3	-258.6	380.4	365.1	15.30	24.861		
3,000.0	2,980.9	2,956.7	2,919.9	8.3	9.3	120.96	-205.8	-274.9	402.8	386.8	15.97	25.214		
3,100.0	3,079.9	3,054.1	3,015.0	8.7	9.8	120.47	-219.4	-291.2	425.2	408.5	16.65	25.538		
3,200.0	3,178.9	3,151.5	3,110.1	9.0	10.3	120.02	-232.9	-307.5	447.6	430.3	17.32	25.837		
3,300.0	3,277.9	3,248.9	3,205.1	9.4	10.7	119.62	-246.4	-323.8	470.1	452.1	18.00	26.113		
3,400.0	3,376.9	3,346.3	3,300.2	9.7	11.2	119.26	-260.0	-340.1	492.5	473.9	18.68	26.368		
3,500.0	3,475.9	3,443.7	3,395.3	10.1	11.6	118.93	-273.5	-356.4	515.0	495.7	19.36	26.606		
3,600.0	3,574.9	3,541.1	3,490.3	10.4	12.1	118.62	-287.0	-372.6	537.5	517.5	20.04	26.827		
3,700.0	3,673.9	3,638.5	3,585.4	10.8	12.5	118.34	-300.6	-388.9	560.0	539.3	20.72	27.033		
3,800.0	3,772.9	3,735.9	3,680.5	11.1	13.0	118.09	-314.1	-405.2	582.6	561.2	21.40	27.226		
3,900.0	3,871.9	3,833.3	3,775.5	11.5	13.5	117.85	-327.6	-421.5	605.1	583.0	22.08	27.406		
4,000.0	3,970.9	3,930.7	3,870.6	11.8	13.9	117.63	-341.2	-437.8	627.7	604.9	22.76	27.575		
4,100.0	4,070.0	4,028.1	3,965.7	12.2	14.4	117.42	-354.7	-454.1	650.2	626.8	23.44	27.735		
4,200.0	4,169.0	4,125.5	4,060.7	12.5	14.8	117.23	-368.2	-470.4	672.8	648.7	24.13	27.885		
4,300.0	4,268.0	4,222.9	4,155.8	12.9	15.3	117.05	-381.8	-486.7	695.4	670.6	24.81	28.026		
4,400.0	4,367.0	4,320.3	4,250.9	13.2	15.8	116.88	-395.3	-502.9	717.9	692.4	25.50	28.160		
4,500.0	4,466.0	4,417.7	4,345.9	13.6	16.2	116.72	-408.8	-519.2	740.5	714.3	26.18	28.287		
4,600.0	4,565.0	4,515.1	4,441.0	13.9	16.7	116.57	-422.4	-535.5	763.1	736.3	26.86	28.406		
4,700.0	4,664.0	4,612.5	4,536.1	14.3	17.2	116.43	-435.9	-551.8	785.7	758.2	27.55	28.520		

Company:	Synergy Resources	Local Co-ordinate Reference:	Well SRC Evans P-26-23-14CHZ
Project:	SEC.26-T5N-R66W	TVD Reference:	WELL @ 4763.0ft (RKB - 15')
Reference Site:	SRC Evans Center Pad Sec.26-T5N-R66W	MD Reference:	WELL @ 4763.0ft (RKB - 15')
Site Error:	0.0ft	North Reference:	True
Reference Well:	SRC Evans P-26-23-14CHZ	Survey Calculation Method:	Minimum Curvature
Well Error:	0.0ft	Output errors are at	2.00 sigma
Reference Wellbore	Wellbore #1	Database:	Landmark
Reference Design:	Plan #1 (10-27-14)	Offset TVD Reference:	Offset Datum

Offset Design													Offset Site Error:	0.0 ft
Survey Program: 0-MWD													Offset Well Error:	0.0 ft
Reference		Offset		Semi Major Axis			Distance							Warning
Measured Depth (ft)	Vertical Depth (ft)	Measured Depth (ft)	Vertical Depth (ft)	Reference (ft)	Offset (ft)	Highside Toolface (°)	Offset Wellbore Centre +N/-S (ft)	+E/-W (ft)	Between Centres (ft)	Between Ellipses (ft)	Minimum Separation (ft)	Separation Factor		
0.0	0.0	1.0	1.0	0.0	0.0	-0.24	67.8	-0.3	67.8	67.8	0.00	N/A		
100.0	100.0	101.0	101.0	0.1	0.1	-0.24	67.8	-0.3	67.8	67.5	0.23	298.494		
200.0	200.0	201.0	201.0	0.3	0.3	-0.24	67.8	-0.3	67.8	67.1	0.68	100.159		
300.0	300.0	301.0	301.0	0.6	0.6	-0.24	67.8	-0.3	67.8	66.6	1.13	60.176		
400.0	400.0	401.0	401.0	0.8	0.8	-0.24	67.8	-0.3	67.8	66.2	1.58	43.007		
500.0	500.0	501.0	501.0	1.0	1.0	-0.24	67.8	-0.3	67.8	65.7	2.03	33.461		
600.0	600.0	601.0	601.0	1.2	1.2	-0.24	67.8	-0.3	67.8	65.3	2.47	27.382		
700.0	700.0	701.0	701.0	1.5	1.5	-0.24	67.8	-0.3	67.8	64.8	2.92	23.173		
800.0	800.0	801.0	801.0	1.7	1.7	-0.24	67.8	-0.3	67.8	64.4	3.37	20.085 CC, ES		
900.0	900.0	901.0	901.0	1.9	1.9	-155.45	67.8	-0.3	69.3	65.5	3.80	18.263		
1,000.0	999.8	1,000.8	1,000.8	2.1	2.1	-157.09	67.8	-0.3	74.1	69.9	4.20	17.647 SF		
1,100.0	1,099.5	1,100.5	1,100.5	2.3	2.4	-159.40	67.8	-0.3	82.2	77.6	4.61	17.834		
1,203.7	1,202.4	1,203.4	1,203.4	2.5	2.6	-162.04	67.8	-0.3	94.2	89.2	5.04	18.695		
1,300.0	1,297.7	1,298.7	1,298.7	2.8	2.8	-164.27	67.8	-0.3	107.2	101.7	5.45	19.659		
1,400.0	1,396.7	1,397.7	1,397.7	3.0	3.0	-166.07	67.8	-0.3	120.8	114.9	5.89	20.519		
1,500.0	1,495.7	1,498.3	1,498.3	3.3	3.2	-168.22	66.8	-1.7	133.9	127.6	6.30	21.239		
1,600.0	1,594.7	1,598.8	1,598.6	3.6	3.4	-171.29	64.0	-6.0	146.1	139.4	6.71	21.787		
1,700.0	1,693.7	1,699.0	1,698.4	3.9	3.6	-175.11	59.2	-13.3	157.9	150.8	7.12	22.166		
1,800.0	1,792.8	1,798.5	1,797.2	4.3	3.8	-179.53	52.6	-23.4	169.7	162.1	7.56	22.441		
1,900.0	1,891.8	1,897.3	1,894.8	4.6	4.1	175.61	44.1	-36.2	182.1	174.1	8.04	22.661		
2,000.0	1,990.8	1,995.0	1,990.7	4.9	4.4	170.44	33.9	-51.7	195.7	187.2	8.56	22.869		
2,100.0	2,089.8	2,091.4	2,084.7	5.3	4.7	165.13	22.1	-69.6	211.1	202.0	9.14	23.102		
2,200.0	2,188.8	2,186.4	2,176.6	5.6	5.0	159.83	8.8	-89.9	228.7	219.0	9.78	23.399		
2,300.0	2,287.8	2,279.8	2,266.0	5.9	5.4	154.68	-5.9	-112.3	249.0	238.6	10.47	23.793		
2,400.0	2,386.8	2,371.4	2,352.9	6.3	5.9	149.78	-21.9	-136.6	272.3	261.1	11.20	24.317		
2,500.0	2,485.8	2,465.0	2,441.0	6.6	6.4	145.23	-39.2	-162.8	298.2	286.2	11.97	24.915		
2,600.0	2,584.8	2,558.9	2,529.5	6.9	7.0	141.37	-56.5	-189.1	325.6	312.9	12.74	25.562		
2,700.0	2,683.8	2,652.8	2,618.0	7.3	7.5	138.10	-73.8	-215.5	354.3	340.8	13.50	26.236		
2,800.0	2,782.8	2,746.7	2,706.4	7.6	8.1	135.31	-91.2	-241.8	383.9	369.6	14.26	26.914		
2,900.0	2,881.8	2,840.6	2,794.9	8.0	8.7	132.91	-108.5	-268.2	414.2	399.2	15.02	27.584		
3,000.0	2,980.9	2,934.5	2,883.3	8.3	9.3	130.83	-125.8	-294.5	445.1	429.4	15.76	28.237		
3,100.0	3,079.9	3,028.4	2,971.8	8.7	9.9	129.02	-143.2	-320.9	476.5	460.0	16.51	28.869		
3,200.0	3,178.9	3,122.4	3,060.2	9.0	10.5	127.43	-160.5	-347.2	508.3	491.1	17.24	29.475		
3,300.0	3,277.9	3,216.3	3,148.7	9.4	11.2	126.02	-177.8	-373.6	540.4	522.4	17.98	30.056		
3,400.0	3,376.9	3,310.2	3,237.2	9.7	11.8	124.77	-195.2	-399.9	572.7	554.0	18.71	30.609		
3,500.0	3,475.9	3,404.1	3,325.6	10.1	12.4	123.65	-212.5	-426.3	605.3	585.9	19.44	31.136		
3,600.0	3,574.9	3,498.0	3,414.1	10.4	13.0	122.65	-229.9	-452.6	638.1	617.9	20.17	31.637		
3,700.0	3,673.9	3,591.9	3,502.5	10.8	13.7	121.74	-247.2	-479.0	671.0	650.1	20.90	32.113		
3,800.0	3,772.9	3,685.8	3,591.0	11.1	14.3	120.92	-264.5	-505.3	704.1	682.4	21.62	32.565		
3,900.0	3,871.9	3,779.7	3,679.4	11.5	15.0	120.17	-281.9	-531.7	737.2	714.9	22.34	32.995		
4,000.0	3,970.9	3,873.6	3,767.9	11.8	15.6	119.48	-299.2	-558.0	770.5	747.5	23.07	33.404		

SRC Evans Center Pad Sec.26-T5N-R66W - SRC Evans P-26-23-14NHZ - Wellbore #1 - Plan #1 (10-2)													Offset Site Error:	0.0 ft
Survey Program: 0-MWD													Offset Well Error:	0.0 ft
Reference		Offset		Semi Major Axis			Distance							
Measured Depth	Vertical Depth	Measured Depth	Vertical Depth	Reference	Offset	Highside Toolface	Offset Wellbore Centre		Between Centres	Between Ellipses	Minimum Separation	Separation Factor	Warning	
(ft)	(ft)	(ft)	(ft)	(ft)	(ft)	(°)	+N/-S (ft)	+E/-W (ft)	(ft)	(ft)	(ft)			
0.0	0.0	0.0	0.0	0.0	0.0	-180.00	-67.4	0.0	67.4					
100.0	100.0	99.0	99.0	0.1	0.1	-180.00	-67.4	0.0	67.4	67.2	0.22	301.342		
200.0	200.0	199.0	199.0	0.3	0.3	-180.00	-67.4	0.0	67.4	66.7	0.67	100.280 CC, ES		
300.0	300.0	296.7	296.7	0.6	0.5	179.92	-69.0	0.1	69.1	68.0	1.10	63.047		
400.0	400.0	394.1	394.0	0.8	0.7	179.70	-74.0	0.4	74.1	72.6	1.52	48.648		
500.0	500.0	491.1	490.6	1.0	1.0	179.39	-82.1	0.9	82.6	80.6	1.97	41.909		
600.0	600.0	587.8	586.7	1.2	1.2	179.06	-93.5	1.5	94.4	91.9	2.43	38.760		
700.0	700.0	687.0	684.9	1.5	1.5	178.76	-106.5	2.3	107.4	104.5	2.90	37.041		
800.0	800.0	786.1	783.2	1.7	1.9	178.53	-119.5	3.1	120.5	117.2	3.37	35.765		
900.0	900.0	885.4	881.7	1.9	2.2	23.94	-132.4	3.8	132.0	128.3	3.74	35.286		
1,000.0	999.8	985.1	980.5	2.1	2.5	24.56	-145.5	4.6	140.4	136.2	4.15	33.812		
1,100.0	1,099.5	1,084.9	1,079.4	2.3	2.8	25.71	-158.5	5.4	145.6	141.0	4.58	31.812		
1,203.7	1,202.4	1,188.5	1,182.1	2.5	3.2	27.48	-172.0	6.2	147.8	142.7	5.03	29.350		
1,300.0	1,297.7	1,284.6	1,277.5	2.8	3.5	29.43	-184.6	6.9	148.4	142.9	5.49	27.054		
1,400.0	1,396.7	1,384.5	1,376.5	3.0	3.8	31.43	-197.7	7.7	149.2	143.3	5.97	24.991		
1,500.0	1,495.7	1,484.4	1,475.5	3.3	4.2	33.40	-210.7	8.4	150.3	143.8	6.47	23.207		
1,600.0	1,594.7	1,584.2	1,574.5	3.6	4.5	35.35	-223.8	9.2	151.5	144.5	6.99	21.655		
1,700.0	1,693.7	1,684.1	1,673.5	3.9	4.9	37.26	-236.8	10.0	152.8	145.3	7.53	20.297		
1,800.0	1,792.8	1,783.9	1,772.5	4.3	5.2	39.14	-249.9	10.7	154.4	146.3	8.08	19.103		
1,900.0	1,891.8	1,883.8	1,871.5	4.6	5.5	40.97	-262.9	11.5	156.1	147.4	8.65	18.049		
2,000.0	1,990.8	1,983.7	1,970.5	4.9	5.9	42.77	-276.0	12.3	157.9	148.7	9.23	17.115		
2,100.0	2,089.8	2,083.5	2,069.5	5.3	6.2	44.52	-289.0	13.0	159.9	150.1	9.82	16.283		
2,200.0	2,188.8	2,183.4	2,168.5	5.6	6.5	46.23	-302.1	13.8	162.1	151.7	10.43	15.542		
2,300.0	2,287.8	2,283.2	2,267.5	5.9	6.9	47.89	-315.1	14.6	164.4	153.3	11.05	14.878		
2,400.0	2,386.8	2,383.1	2,366.5	6.3	7.2	49.51	-328.2	15.3	166.8	155.1	11.68	14.282		
2,500.0	2,485.8	2,483.0	2,465.5	6.6	7.6	51.08	-341.2	16.1	169.4	157.0	12.32	13.746		
2,600.0	2,584.8	2,582.8	2,564.5	6.9	7.9	52.60	-354.3	16.9	172.1	159.1	12.97	13.263		
2,700.0	2,683.8	2,682.7	2,663.5	7.3	8.2	54.07	-367.3	17.6	174.9	161.2	13.63	12.827		
2,800.0	2,782.8	2,782.6	2,762.5	7.6	8.6	55.49	-380.4	18.4	177.8	163.5	14.30	12.431		
2,900.0	2,881.8	2,882.4	2,861.5	8.0	8.9	56.87	-393.4	19.2	180.8	165.8	14.97	12.072		
3,000.0	2,980.9	2,982.3	2,960.5	8.3	9.2	58.21	-406.5	19.9	183.9	168.2	15.66	11.746		
3,100.0	3,079.9	3,082.1	3,059.5	8.7	9.6	59.49	-419.5	20.7	187.1	170.8	16.34	11.449		
3,200.0	3,178.9	3,182.0	3,158.5	9.0	9.9	60.74	-432.6	21.5	190.4	173.4	17.04	11.178		
3,300.0	3,277.9	3,281.9	3,257.5	9.4	10.3	61.94	-445.6	22.2	193.8	176.1	17.73	10.931		
3,400.0	3,376.9	3,381.7	3,356.5	9.7	10.6	63.10	-458.7	23.0	197.3	178.9	18.43	10.704		
3,500.0	3,475.9	3,481.6	3,455.5	10.1	10.9	64.21	-471.7	23.8	200.8	181.7	19.14	10.496		
3,600.0	3,574.9	3,581.4	3,554.5	10.4	11.3	65.29	-484.8	24.6	204.5	184.6	19.84	10.305		
3,700.0	3,673.9	3,681.3	3,653.5	10.8	11.6	66.34	-497.8	25.3	208.2	187.6	20.55	10.130		
3,800.0	3,772.9	3,781.2	3,752.5	11.1	12.0	67.34	-510.9	26.1	211.9	190.7	21.26	9.968		
3,900.0	3,871.9	3,881.0	3,851.5	11.5	12.3	68.31	-523.9	26.9	215.8	193.8	21.97	9.819		
4,000.0	3,970.9	3,980.9	3,950.5	11.8	12.6	69.24	-537.0	27.6	219.7	197.0	22.69	9.681		
4,100.0	4,070.0	4,080.7	4,049.5	12.2	13.0	70.15	-550.0	28.4	223.6	200.2	23.40	9.554		
4,200.0	4,169.0	4,180.6	4,148.5	12.5	13.3	71.02	-563.1	29.2	227.6	203.5	24.12	9.436		
4,300.0	4,268.0	4,280.5	4,247.5	12.9	13.7	71.86	-576.1	29.9	231.6	206.8	24.84	9.326		
4,400.0	4,367.0	4,380.3	4,346.5	13.2	14.0	72.67	-589.2	30.7	235.7	210.2	25.56	9.225		
4,500.0	4,466.0	4,480.2	4,445.5	13.6	14.3	73.45	-602.2	31.5	239.9	213.6	26.27	9.130		
4,600.0	4,565.0	4,580.1	4,544.5	13.9	14.7	74.21	-615.3	32.2	244.1	217.1	26.99	9.042		
4,700.0	4,664.0	4,680.9	4,644.5	14.3	15.0	74.96	-628.4	33.0	248.2	220.5	27.70	8.961		
4,800.0	4,763.0	4,786.2	4,749.2	14.6	15.2	76.20	-639.5	33.7	251.0	222.7	28.38	8.844		
4,900.0	4,862.0	4,891.1	4,853.9	15.0	15.4	78.12	-646.8	34.1	251.9	222.8	29.09	8.659		
5,000.0	4,961.0	4,995.4	4,958.1	15.3	15.6	80.75	-650.2	34.3	251.1	221.2	29.81	8.422		
5,100.0	5,060.0	5,096.4	5,059.0	15.7	15.7	83.91	-650.5	34.3	249.3	218.8	30.54	8.163		

Company:	Synergy Resources	Local Co-ordinate Reference:	Well SRC Evans P-26-23-14CHZ
Project:	SEC.26-T5N-R66W	TVD Reference:	WELL @ 4763.0ft (RKB - 15')
Reference Site:	SRC Evans Center Pad Sec.26-T5N-R66W	MD Reference:	WELL @ 4763.0ft (RKB - 15')
Site Error:	0.0ft	North Reference:	True
Reference Well:	SRC Evans P-26-23-14CHZ	Survey Calculation Method:	Minimum Curvature
Well Error:	0.0ft	Output errors are at	2.00 sigma
Reference Wellbore	Wellbore #1	Database:	Landmark
Reference Design:	Plan #1 (10-27-14)	Offset TVD Reference:	Offset Datum

Offset Design												Offset Site Error:	0.0 ft
Survey Program: 0-MWD												Offset Well Error:	0.0 ft
Reference		Offset		Semi Major Axis			Distance						Warning
Measured Depth (ft)	Vertical Depth (ft)	Measured Depth (ft)	Vertical Depth (ft)	Reference (ft)	Offset (ft)	Highside Toolface (°)	Offset Wellbore Centre +N/-S (ft)	+E/-W (ft)	Between Centres (ft)	Between Ellipses (ft)	Minimum Separation (ft)	Separation Factor	
5,200.0	5,159.0	5,195.4	5,158.0	16.0	15.8	87.10	-650.5	34.3	248.2	217.0	31.21	7.952	
5,290.2	5,248.4	5,284.7	5,247.4	16.4	15.9	90.00	-650.5	34.3	247.9	216.1	31.79	7.797	
5,300.0	5,258.1	5,294.4	5,257.1	16.4	16.0	90.31	-650.5	34.3	247.9	216.0	31.85	7.783	
5,400.0	5,357.1	5,393.4	5,356.1	16.7	16.1	93.52	-650.5	34.3	248.4	215.9	32.45	7.654	
5,500.0	5,456.1	5,492.4	5,455.1	17.1	16.2	96.71	-650.5	34.3	249.6	216.6	33.00	7.564	
5,600.0	5,555.1	5,591.4	5,554.1	17.4	16.3	99.86	-650.5	34.3	251.7	218.2	33.51	7.510	
5,700.0	5,654.1	5,690.4	5,653.1	17.8	16.5	102.95	-650.5	34.3	254.5	220.5	33.98	7.489	
5,800.0	5,753.1	5,789.4	5,752.1	18.2	16.6	105.96	-650.5	34.3	258.0	223.6	34.40	7.500	
5,900.0	5,852.1	5,888.4	5,851.1	18.5	16.7	108.89	-650.5	34.3	262.3	227.5	34.79	7.539	
5,946.0	5,897.6	5,933.9	5,896.6	18.7	16.8	110.20	-650.5	34.3	264.4	229.5	34.95	7.565	
6,000.0	5,951.2	5,987.5	5,950.2	18.8	16.9	111.66	-650.5	34.3	267.0	231.9	35.12	7.603	
6,100.0	6,050.6	6,087.0	6,049.6	19.0	17.0	113.78	-650.5	34.3	271.0	235.7	35.36	7.665	
6,200.0	6,150.4	6,186.7	6,149.4	19.2	17.1	115.16	-650.5	34.3	273.9	238.3	35.60	7.695	
6,300.0	6,250.3	6,285.7	6,248.1	19.4	17.2	117.14	-644.3	34.3	275.6	239.9	35.70	7.719	
6,349.7	6,300.0	6,333.7	6,295.5	19.5	17.2	-86.52	-636.3	34.3	276.2	240.5	35.63	7.751	
6,400.0	6,350.3	6,381.2	6,341.6	19.5	17.2	-84.27	-625.4	34.2	277.1	241.7	35.49	7.809	
6,500.0	6,450.3	6,470.3	6,425.9	19.7	17.1	-78.46	-596.8	34.2	282.4	247.4	34.98	8.073	
6,533.5	6,483.8	6,500.0	6,453.2	19.7	17.0	-76.11	-584.9	34.2	285.6	250.9	34.73	8.222	
6,550.0	6,500.3	6,511.9	6,463.9	19.7	17.0	-74.88	-579.9	34.1	287.5	252.8	34.62	8.303	
6,600.0	6,550.2	6,550.0	6,497.9	19.8	17.0	-71.43	-562.4	34.1	293.9	259.7	34.18	8.597	
6,650.0	6,599.8	6,592.1	6,534.2	19.8	16.9	-67.84	-541.1	34.1	301.3	267.6	33.65	8.954	
6,700.0	6,648.8	6,631.2	6,566.7	19.8	16.8	-64.65	-519.5	34.0	309.4	276.3	33.10	9.348	
6,750.0	6,697.0	6,669.7	6,597.5	19.7	16.7	-61.69	-496.5	33.9	318.2	285.6	32.52	9.784	
6,800.0	6,744.2	6,707.6	6,626.7	19.6	16.6	-58.96	-472.2	33.9	327.2	295.3	31.91	10.257	
6,850.0	6,790.1	6,750.0	6,657.7	19.6	16.5	-56.23	-443.3	33.8	336.6	305.4	31.22	10.780	
6,900.0	6,834.5	6,782.1	6,680.0	19.4	16.5	-54.19	-420.2	33.8	345.9	315.3	30.60	11.302	
6,950.0	6,877.2	6,818.7	6,704.1	19.3	16.4	-52.13	-392.6	33.7	355.1	325.2	29.92	11.869	
7,000.0	6,918.0	6,850.0	6,723.6	19.2	16.3	-50.43	-368.2	33.7	364.2	335.0	29.26	12.447	
7,050.0	6,956.7	6,891.0	6,747.5	19.1	16.3	-48.60	-334.9	33.6	372.9	344.4	28.53	13.068	
7,100.0	6,993.1	6,926.7	6,766.7	18.9	16.3	-47.10	-304.8	33.5	381.2	353.3	27.85	13.685	
7,150.0	7,026.9	6,962.1	6,784.3	18.8	16.3	-45.78	-274.1	33.4	389.0	361.8	27.20	14.302	
7,200.0	7,058.2	7,000.0	6,801.4	18.6	16.3	-44.56	-240.3	33.4	396.3	369.7	26.58	14.912	
7,250.0	7,086.6	7,032.3	6,814.5	18.5	16.3	-43.59	-210.8	33.3	402.9	376.9	26.04	15.472	
7,300.0	7,112.1	7,067.1	6,827.1	18.4	16.4	-42.71	-178.3	33.2	408.9	383.3	25.58	15.988	
7,350.0	7,134.6	7,100.0	6,837.6	18.3	16.4	-41.98	-147.2	33.2	414.2	389.0	25.21	16.430	
7,400.0	7,153.9	7,136.4	6,847.6	18.2	16.5	-41.34	-112.2	33.1	418.7	393.7	24.96	16.775	
7,450.0	7,169.9	7,170.8	6,855.3	18.2	16.7	-40.83	-78.6	33.0	422.4	397.6	24.84	17.004	
7,500.0	7,182.5	7,200.0	6,860.6	18.2	16.8	-40.48	-49.9	32.9	425.4	400.5	24.85	17.118	
7,550.0	7,191.8	7,239.5	6,865.9	18.3	17.0	-40.17	-10.7	32.8	427.5	402.4	25.03	17.077	
7,600.0	7,197.6	7,273.8	6,868.8	18.4	17.1	-40.01	23.4	32.8	428.7	403.4	25.35	16.914	
7,650.0	7,199.9	7,308.1	6,870.0	18.5	17.4	-39.95	57.7	32.7	429.2	403.4	25.80	16.634	
7,658.5	7,200.0	7,316.1	6,870.0	18.6	17.4	-39.95	65.7	32.7	429.2	403.3	25.90	16.569	
7,673.5	7,200.0	7,327.9	6,870.0	18.6	17.5	-39.95	77.5	32.6	429.2	403.1	26.03	16.487	
7,700.0	7,200.0	7,354.4	6,870.0	18.8	17.7	-39.95	104.0	32.6	429.2	402.9	26.29	16.325	
7,800.0	7,200.0	7,454.4	6,870.0	19.4	18.5	-39.95	204.0	32.4	429.2	401.8	27.40	15.661	
7,900.0	7,200.0	7,554.4	6,870.0	20.2	19.4	-39.95	304.0	32.1	429.2	400.4	28.73	14.939	
8,000.0	7,200.0	7,654.4	6,870.0	21.2	20.5	-39.95	404.0	31.9	429.2	398.9	30.24	14.194	
8,100.0	7,200.0	7,754.4	6,870.0	22.3	21.7	-39.95	504.0	31.7	429.2	397.3	31.90	13.452	
8,200.0	7,200.0	7,854.4	6,870.0	23.5	23.0	-39.95	604.0	31.4	429.2	395.5	33.71	12.732	
8,300.0	7,200.0	7,954.4	6,870.0	24.8	24.4	-39.95	704.0	31.2	429.2	393.5	35.63	12.047	
8,400.0	7,200.0	8,054.4	6,870.0	26.2	25.9	-39.95	804.0	31.0	429.2	391.5	37.64	11.401	
8,500.0	7,200.0	8,154.4	6,870.0	27.7	27.4	-39.95	904.0	30.8	429.2	389.4	39.74	10.799	

CC - Min centre to center distance or convergent point, SF - min separation factor, ES - min ellipse separation

Company:	Synergy Resources	Local Co-ordinate Reference:	Well SRC Evans P-26-23-14CHZ
Project:	SEC.26-T5N-R66W	TVD Reference:	WELL @ 4763.0ft (RKB - 15')
Reference Site:	SRC Evans Center Pad Sec.26-T5N-R66W	MD Reference:	WELL @ 4763.0ft (RKB - 15')
Site Error:	0.0ft	North Reference:	True
Reference Well:	SRC Evans P-26-23-14CHZ	Survey Calculation Method:	Minimum Curvature
Well Error:	0.0ft	Output errors are at	2.00 sigma
Reference Wellbore	Wellbore #1	Database:	Landmark
Reference Design:	Plan #1 (10-27-14)	Offset TVD Reference:	Offset Datum

Offset Design												Offset Site Error:	0.0 ft
Survey Program: 0-MWID												Offset Well Error:	0.0 ft
Reference		Offset		Semi Major Axis			Distance						Warning
Measured Depth (ft)	Vertical Depth (ft)	Measured Depth (ft)	Vertical Depth (ft)	Reference (ft)	Offset (ft)	Highside Toolface (°)	Offset Wellbore Centre +N/-S (ft)	+E/-W (ft)	Between Centres (ft)	Between Ellipses (ft)	Minimum Separation (ft)	Separation Factor	
8,600.0	7,200.0	8,254.4	6,870.0	29.2	29.0	-39.95	1,004.0	30.5	429.2	387.3	41.91	10.240	
8,700.0	7,200.0	8,354.4	6,870.0	30.7	30.6	-39.95	1,104.0	30.3	429.2	385.0	44.14	9.723	
8,800.0	7,200.0	8,454.4	6,870.0	32.3	32.2	-39.95	1,204.0	30.1	429.2	382.7	46.42	9.246	
8,900.0	7,200.0	8,554.4	6,870.0	33.9	33.9	-39.95	1,304.0	29.9	429.2	380.4	48.74	8.805	
9,000.0	7,200.0	8,654.4	6,870.0	35.6	35.6	-39.95	1,404.0	29.6	429.2	378.1	51.10	8.398	
9,100.0	7,200.0	8,754.4	6,870.0	37.2	37.3	-39.95	1,504.0	29.4	429.2	375.7	53.50	8.022	
9,200.0	7,200.0	8,854.4	6,870.0	38.9	39.0	-39.95	1,604.0	29.2	429.2	373.2	55.92	7.674	
9,300.0	7,200.0	8,954.4	6,870.0	40.6	40.8	-39.95	1,704.0	28.9	429.2	370.8	58.37	7.352	
9,400.0	7,200.0	9,054.4	6,870.0	42.4	42.5	-39.95	1,804.0	28.7	429.2	368.3	60.84	7.053	
9,500.0	7,200.0	9,154.4	6,870.0	44.1	44.3	-39.95	1,904.0	28.5	429.2	365.8	63.33	6.776	
9,600.0	7,200.0	9,254.4	6,870.0	45.9	46.1	-39.95	2,004.0	28.3	429.2	363.3	65.84	6.518	
9,700.0	7,200.0	9,354.4	6,870.0	47.6	47.9	-39.95	2,104.0	28.0	429.1	360.8	68.36	6.277	
9,800.0	7,200.0	9,454.4	6,870.0	49.4	49.7	-39.95	2,204.0	27.8	429.1	358.2	70.90	6.053	
9,900.0	7,200.0	9,554.4	6,870.0	51.2	51.5	-39.95	2,304.0	27.6	429.1	355.7	73.45	5.843	
10,000.0	7,200.0	9,654.4	6,870.0	53.0	53.3	-39.95	2,404.0	27.4	429.1	353.1	76.01	5.646	
10,100.0	7,200.0	9,754.4	6,870.0	54.8	55.2	-39.95	2,504.0	27.1	429.1	350.6	78.58	5.461	
10,200.0	7,200.0	9,854.4	6,870.0	56.7	57.0	-39.95	2,604.0	26.9	429.1	348.0	81.16	5.287	
10,300.0	7,200.0	9,954.4	6,870.0	58.5	58.9	-39.95	2,704.0	26.7	429.1	345.4	83.75	5.124	
10,400.0	7,200.0	10,054.4	6,870.0	60.3	60.7	-39.95	2,804.0	26.4	429.1	342.8	86.35	4.970	
10,500.0	7,200.0	10,154.4	6,870.0	62.1	62.6	-39.95	2,904.0	26.2	429.1	340.2	88.95	4.825	
10,600.0	7,200.0	10,254.4	6,870.0	64.0	64.4	-39.95	3,004.0	26.0	429.1	337.6	91.56	4.687	
10,700.0	7,200.0	10,354.4	6,870.0	65.8	66.3	-39.95	3,104.0	25.8	429.1	335.0	94.17	4.557	
10,800.0	7,200.0	10,454.4	6,870.0	67.7	68.1	-39.95	3,204.0	25.5	429.1	332.3	96.79	4.434	
10,900.0	7,200.0	10,554.4	6,870.0	69.5	70.0	-39.95	3,304.0	25.3	429.1	329.7	99.41	4.317	
11,000.0	7,200.0	10,654.4	6,870.0	71.4	71.9	-39.95	3,404.0	25.1	429.1	327.1	102.04	4.205	
11,100.0	7,200.0	10,754.4	6,870.0	73.2	73.7	-39.95	3,504.0	24.9	429.1	324.5	104.67	4.100	
11,200.0	7,200.0	10,854.4	6,870.0	75.1	75.6	-39.95	3,604.0	24.6	429.1	321.8	107.31	3.999	
11,300.0	7,200.0	10,954.4	6,870.0	77.0	77.5	-39.95	3,704.0	24.4	429.1	319.2	109.95	3.903	
11,400.0	7,200.0	11,054.4	6,870.0	78.8	79.4	-39.94	3,804.0	24.2	429.1	316.5	112.59	3.811	
11,500.0	7,200.0	11,154.4	6,870.0	80.7	81.3	-39.94	3,904.0	23.9	429.1	313.9	115.24	3.724	
11,600.0	7,200.0	11,254.4	6,870.0	82.6	83.1	-39.94	4,004.0	23.7	429.1	311.2	117.89	3.640	
11,700.0	7,200.0	11,354.4	6,870.0	84.5	85.0	-39.94	4,104.0	23.5	429.1	308.6	120.54	3.560	
11,800.0	7,200.0	11,454.4	6,870.0	86.3	86.9	-39.94	4,204.0	23.3	429.1	305.9	123.20	3.483	
11,900.0	7,200.0	11,554.4	6,870.0	88.2	88.8	-39.94	4,304.0	23.0	429.1	303.3	125.85	3.410	
12,000.0	7,200.0	11,654.4	6,870.0	90.1	90.7	-39.94	4,404.0	22.8	429.1	300.6	128.51	3.339	
12,100.0	7,200.0	11,754.4	6,870.0	92.0	92.6	-39.94	4,504.0	22.6	429.1	298.0	131.17	3.271	
12,200.0	7,200.0	11,854.4	6,870.0	93.9	94.5	-39.94	4,604.0	22.4	429.1	295.3	133.84	3.206	
12,300.0	7,200.0	11,954.4	6,870.0	95.8	96.4	-39.94	4,704.0	22.1	429.1	292.6	136.50	3.144	
12,400.0	7,200.0	12,054.4	6,870.0	97.6	98.3	-39.94	4,804.0	21.9	429.1	290.0	139.17	3.083	
12,500.0	7,200.0	12,154.4	6,870.0	99.5	100.1	-39.94	4,904.0	21.7	429.1	287.3	141.84	3.025	
12,600.0	7,200.0	12,254.4	6,870.0	101.4	102.0	-39.94	5,004.0	21.4	429.1	284.6	144.51	2.970	
12,700.0	7,200.0	12,354.4	6,870.0	103.3	103.9	-39.94	5,104.0	21.2	429.1	281.9	147.18	2.916	
12,800.0	7,200.0	12,454.4	6,870.0	105.2	105.8	-39.94	5,204.0	21.0	429.1	279.3	149.85	2.864	
12,900.0	7,200.0	12,554.4	6,870.0	107.1	107.7	-39.94	5,304.0	20.8	429.1	276.6	152.52	2.813	
13,000.0	7,200.0	12,654.4	6,870.0	109.0	109.6	-39.94	5,404.0	20.5	429.1	273.9	155.20	2.765	
13,100.0	7,200.0	12,754.4	6,870.0	110.9	111.5	-39.94	5,504.0	20.3	429.1	271.2	157.87	2.718	
13,200.0	7,200.0	12,854.4	6,870.0	112.8	113.4	-39.94	5,604.0	20.1	429.1	268.6	160.55	2.673	
13,300.0	7,200.0	12,954.4	6,870.0	114.7	115.3	-39.94	5,704.0	19.8	429.1	265.9	163.23	2.629	
13,400.0	7,200.0	13,054.4	6,870.0	116.6	117.2	-39.94	5,804.0	19.6	429.1	263.2	165.91	2.586	
13,500.0	7,200.0	13,154.4	6,870.0	118.5	119.1	-39.94	5,904.0	19.4	429.1	260.5	168.59	2.545	
13,600.0	7,200.0	13,254.4	6,870.0	120.4	121.0	-39.94	6,004.0	19.2	429.1	257.8	171.27	2.505	
13,700.0	7,200.0	13,354.4	6,870.0	122.3	123.0	-39.94	6,104.0	18.9	429.1	255.2	173.95	2.467	

CC - Min centre to center distance or convergent point, SF - min separation factor, ES - min ellipse separation

Company:	Synergy Resources	Local Co-ordinate Reference:	Well SRC Evans P-26-23-14CHZ
Project:	SEC.26-T5N-R66W	TVD Reference:	WELL @ 4763.0ft (RKB - 15')
Reference Site:	SRC Evans Center Pad Sec.26-T5N-R66W	MD Reference:	WELL @ 4763.0ft (RKB - 15')
Site Error:	0.0ft	North Reference:	True
Reference Well:	SRC Evans P-26-23-14CHZ	Survey Calculation Method:	Minimum Curvature
Well Error:	0.0ft	Output errors are at	2.00 sigma
Reference Wellbore	Wellbore #1	Database:	Landmark
Reference Design:	Plan #1 (10-27-14)	Offset TVD Reference:	Offset Datum

Offset Design												Offset Site Error:	0.0 ft
Survey Program: 0-MWD												Offset Well Error:	0.0 ft
Reference		Offset		Semi Major Axis			Distance						
Measured Depth (ft)	Vertical Depth (ft)	Measured Depth (ft)	Vertical Depth (ft)	Reference (ft)	Offset (ft)	Highside Toolface (°)	Offset Wellbore Centre +N/-S (ft)	+E/-W (ft)	Between Centres (ft)	Between Ellipses (ft)	Minimum Separation (ft)	Separation Factor	Warning
13,800.0	7,200.0	13,454.4	6,870.0	124.2	124.9	-39.94	6,204.0	18.7	429.1	252.5	176.63	2.429	
13,900.0	7,200.0	13,554.4	6,870.0	126.1	126.8	-39.94	6,304.0	18.5	429.1	249.8	179.32	2.393	
14,000.0	7,200.0	13,654.4	6,870.0	128.0	128.7	-39.94	6,404.0	18.3	429.1	247.1	182.00	2.358	
14,100.0	7,200.0	13,754.4	6,870.0	129.9	130.6	-39.94	6,504.0	18.0	429.1	244.4	184.69	2.323	
14,200.0	7,200.0	13,854.4	6,870.0	131.8	132.5	-39.94	6,604.0	17.8	429.1	241.7	187.37	2.290	
14,300.0	7,200.0	13,954.4	6,870.0	133.7	134.4	-39.94	6,704.0	17.6	429.1	239.0	190.06	2.258	
14,400.0	7,200.0	14,054.4	6,870.0	135.6	136.3	-39.94	6,804.0	17.3	429.1	236.4	192.75	2.226	
14,500.0	7,200.0	14,154.4	6,870.0	137.5	138.2	-39.94	6,904.0	17.1	429.1	233.7	195.43	2.196	
14,600.0	7,200.0	14,254.4	6,870.0	139.4	140.1	-39.94	7,004.0	16.9	429.1	231.0	198.12	2.166	
14,700.0	7,200.0	14,354.4	6,870.0	141.3	142.0	-39.94	7,104.0	16.7	429.1	228.3	200.81	2.137	
14,800.0	7,200.0	14,454.4	6,870.0	143.2	143.9	-39.94	7,204.0	16.4	429.1	225.6	203.50	2.109	
14,900.0	7,200.0	14,554.4	6,870.0	145.1	145.8	-39.94	7,304.0	16.2	429.1	222.9	206.19	2.081	
15,000.0	7,200.0	14,654.4	6,870.0	147.0	147.7	-39.94	7,404.0	16.0	429.1	220.2	208.88	2.054	
15,100.0	7,200.0	14,754.4	6,870.0	148.9	149.7	-39.94	7,504.0	15.8	429.1	217.5	211.57	2.028	
15,200.0	7,200.0	14,854.4	6,870.0	150.8	151.6	-39.94	7,604.0	15.5	429.1	214.8	214.26	2.003	
15,300.0	7,200.0	14,954.4	6,870.0	152.7	153.5	-39.94	7,704.0	15.3	429.1	212.1	216.95	1.978	
15,400.0	7,200.0	15,054.4	6,870.0	154.6	155.4	-39.94	7,804.0	15.1	429.1	209.4	219.65	1.954	
15,500.0	7,200.0	15,154.4	6,870.0	156.6	157.3	-39.94	7,904.0	14.8	429.1	206.8	222.34	1.930	
15,600.0	7,200.0	15,254.4	6,870.0	158.5	159.2	-39.94	8,004.0	14.6	429.1	204.1	225.03	1.907	
15,700.0	7,200.0	15,354.4	6,870.0	160.4	161.1	-39.94	8,104.0	14.4	429.1	201.4	227.72	1.884	
15,800.0	7,200.0	15,454.4	6,870.0	162.3	163.0	-39.94	8,204.0	14.2	429.1	198.7	230.42	1.862	
15,900.0	7,200.0	15,554.4	6,870.0	164.2	164.9	-39.94	8,304.0	13.9	429.1	196.0	233.11	1.841	
16,000.0	7,200.0	15,654.4	6,870.0	166.1	166.9	-39.94	8,404.0	13.7	429.1	193.3	235.81	1.820	
16,100.0	7,200.0	15,754.4	6,870.0	168.0	168.8	-39.94	8,504.0	13.5	429.1	190.6	238.50	1.799	
16,200.0	7,200.0	15,854.4	6,870.0	169.9	170.7	-39.94	8,604.0	13.3	429.1	187.9	241.19	1.779	
16,300.0	7,200.0	15,954.4	6,870.0	171.8	172.6	-39.94	8,704.0	13.0	429.1	185.2	243.89	1.759	
16,400.0	7,200.0	16,054.4	6,870.0	173.7	174.5	-39.94	8,804.0	12.8	429.1	182.5	246.59	1.740	
16,500.0	7,200.0	16,154.4	6,870.0	175.6	176.4	-39.94	8,904.0	12.6	429.1	179.8	249.28	1.721	
16,600.0	7,200.0	16,254.4	6,870.0	177.6	178.3	-39.94	9,004.0	12.3	429.1	177.1	251.98	1.703	
16,700.0	7,200.0	16,354.4	6,870.0	179.5	180.2	-39.94	9,104.0	12.1	429.1	174.4	254.67	1.685	
16,800.0	7,200.0	16,454.4	6,870.0	181.4	182.2	-39.94	9,204.0	11.9	429.1	171.7	257.37	1.667	
16,900.0	7,200.0	16,554.4	6,870.0	183.3	184.1	-39.94	9,304.0	11.7	429.1	169.0	260.07	1.650	
16,995.0	7,200.0	16,649.4	6,870.0	185.1	185.9	-39.94	9,399.0	11.4	429.1	166.4	262.63	1.634 SF	

Company: Synergy Resources
Project: SEC.26-T5N-R66W
Reference Site: SRC Evans Center Pad Sec.26-T5N-R66W
Site Error: 0.0ft
Reference Well: SRC Evans P-26-23-14CHZ
Well Error: 0.0ft
Reference Wellbore: Wellbore #1
Reference Design: Plan #1 (10-27-14)

Local Co-ordinate Reference: Well SRC Evans P-26-23-14CHZ
TVD Reference: WELL @ 4763.0ft (RKB - 15')
MD Reference: WELL @ 4763.0ft (RKB - 15')
North Reference: True
Survey Calculation Method: Minimum Curvature
Output errors are at 2.00 sigma
Database: Landmark
Offset TVD Reference: Offset Datum

Reference Depths are relative to WELL @ 4763.0ft (RKB - 15')

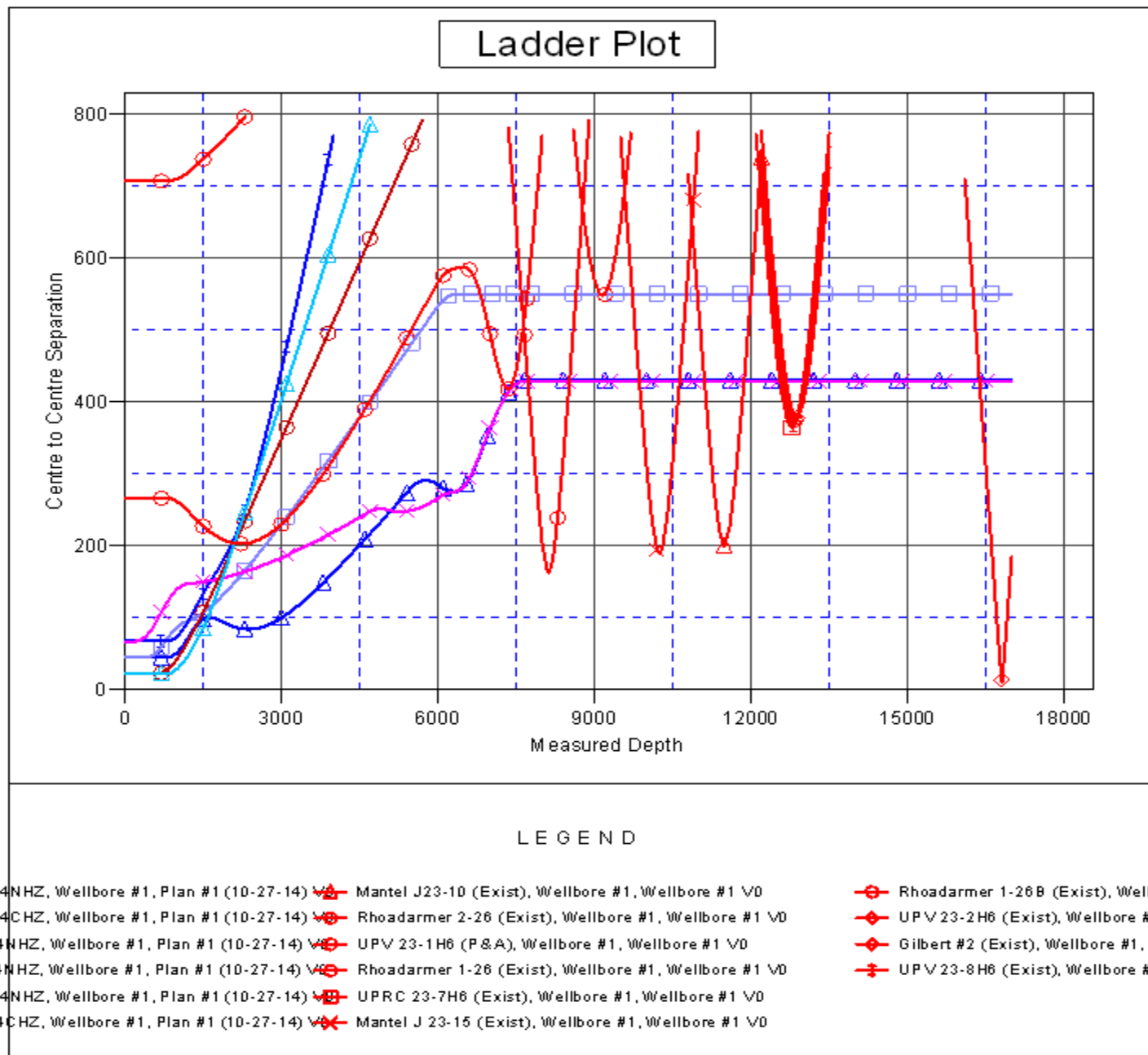
Offset Depths are relative to Offset Datum

Central Meridian is -105.500000 °

Coordinates are relative to: SRC Evans P-26-23-14CHZ

Coordinate System is US State Plane 1983, Colorado Northern Zone

Grid Convergence at Surface is: 0.49°



Reference Depths are relative to WELL @ 4763.0ft (RKB - 15')	Coordinates are relative to: SRC Evans P-26-23-14CHZ
Offset Depths are relative to Offset Datum	Coordinate System is US State Plane 1983, Colorado Northern Zone
Central Meridian is -105.500000 °	Grid Convergence at Surface is: 0.49°

