

OPERATOR: **WPX ENERGY**

WELL NAME: AP 523-17-695

FIELD NAME: ALLEN POINT

DRILLING RIG: NABORS 573

API #: 05-045-21379

LOCATION: SEC. 17 T 6S R 95W

SURFACE HOLE: 23' FNL , 2497' FWL

BOTTOM HOLE: 1571' FSL , 2220' FWL

SCALE: 1"=100'



533 Bogart Lane, Unit A
Grand Junction, CO 81505
Office (970) 424-5162

AP 523-17-695

COUNTY: GARFIELD

STATE: COLORADO

DRILLING FLUID: LSND

LOGGER: LUKE DAVENPORT

GROUND ELEVATION: 6909'

KELLY BUSHING: 6935'

TVD VS. MD = -200'

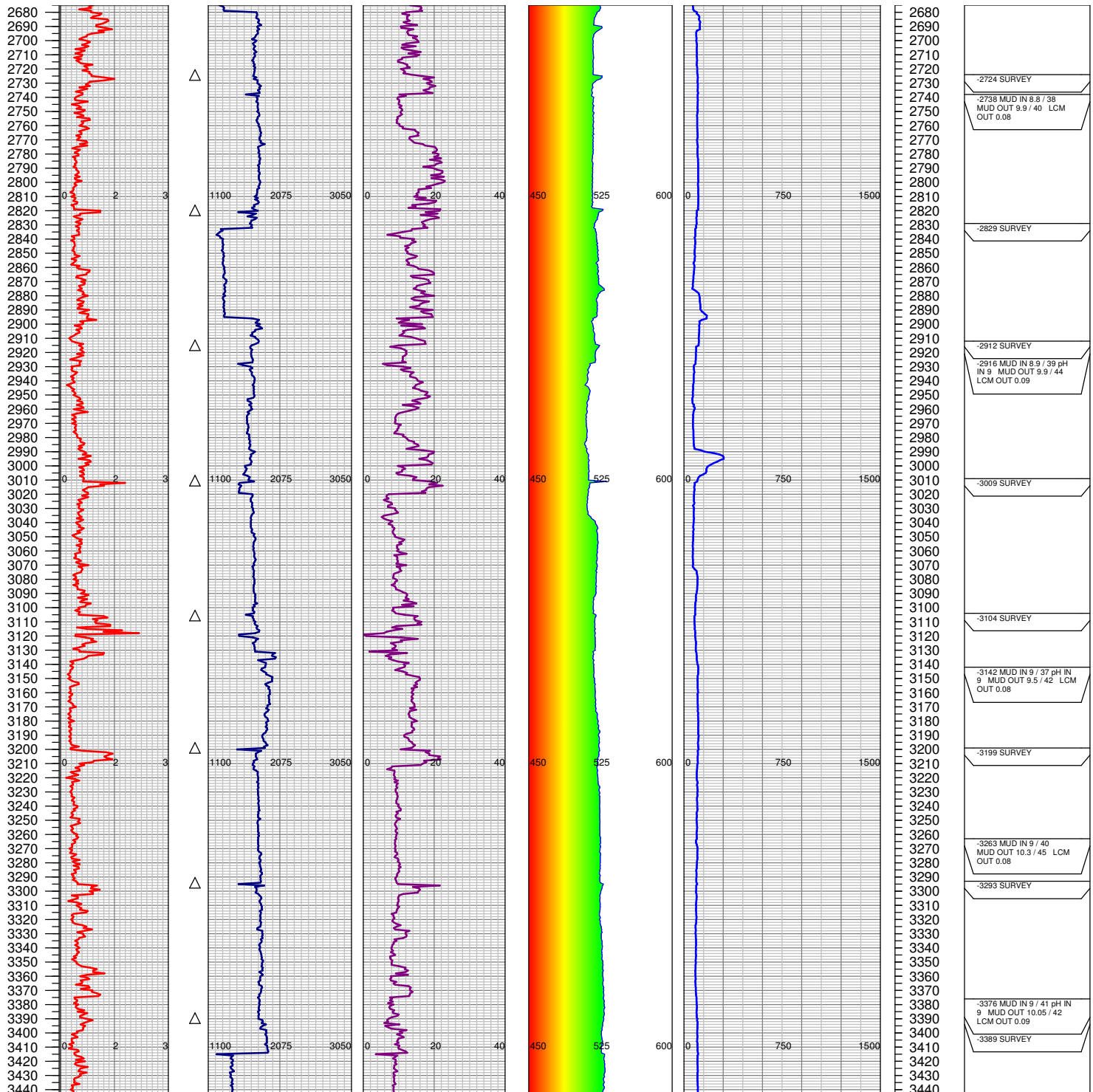
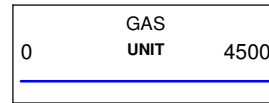
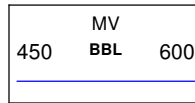
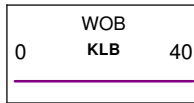
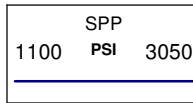
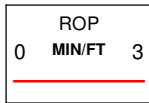
DEPTHS LOGGED: 2675'-9770'

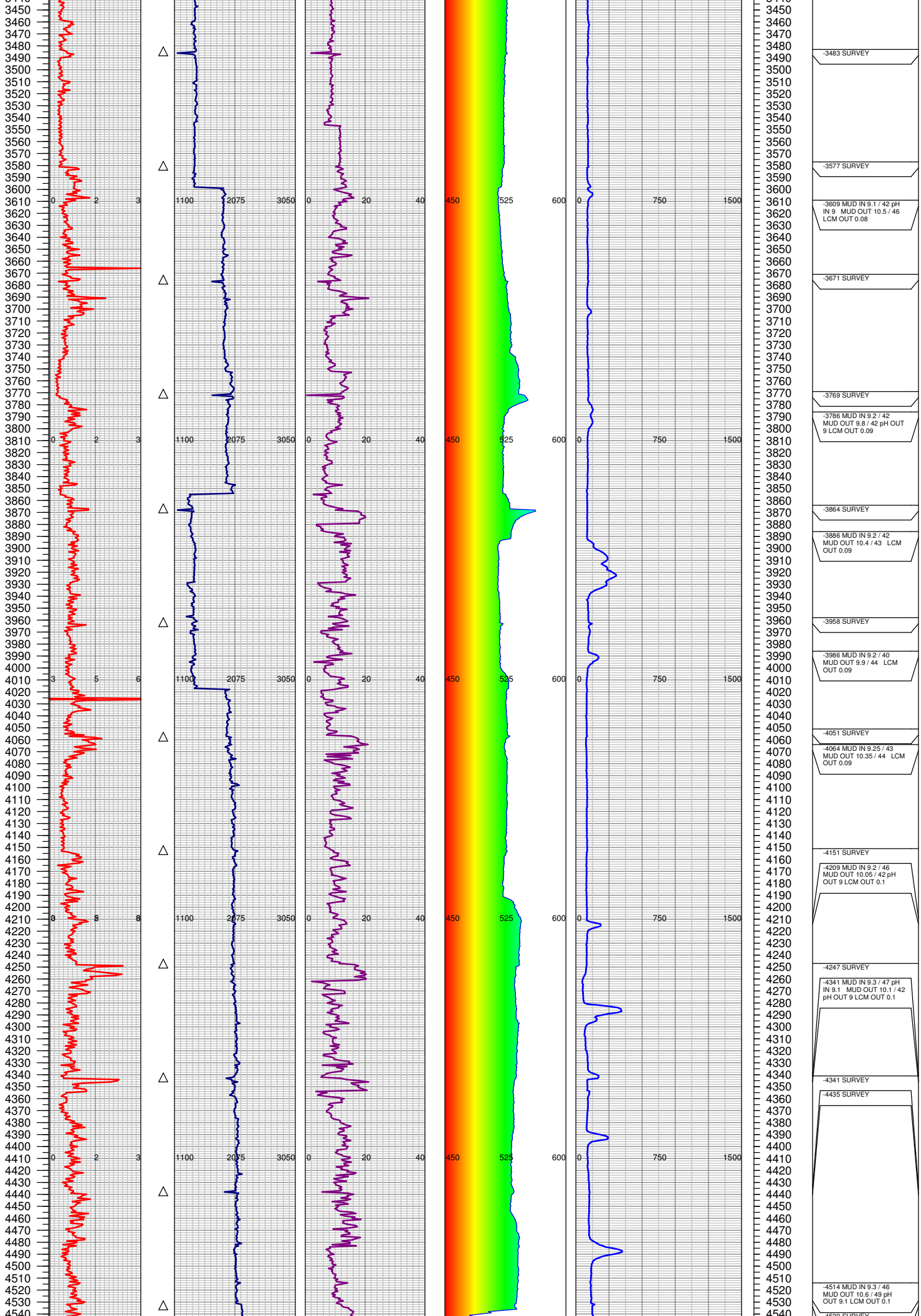
SPUD DATE: 9/3/2014

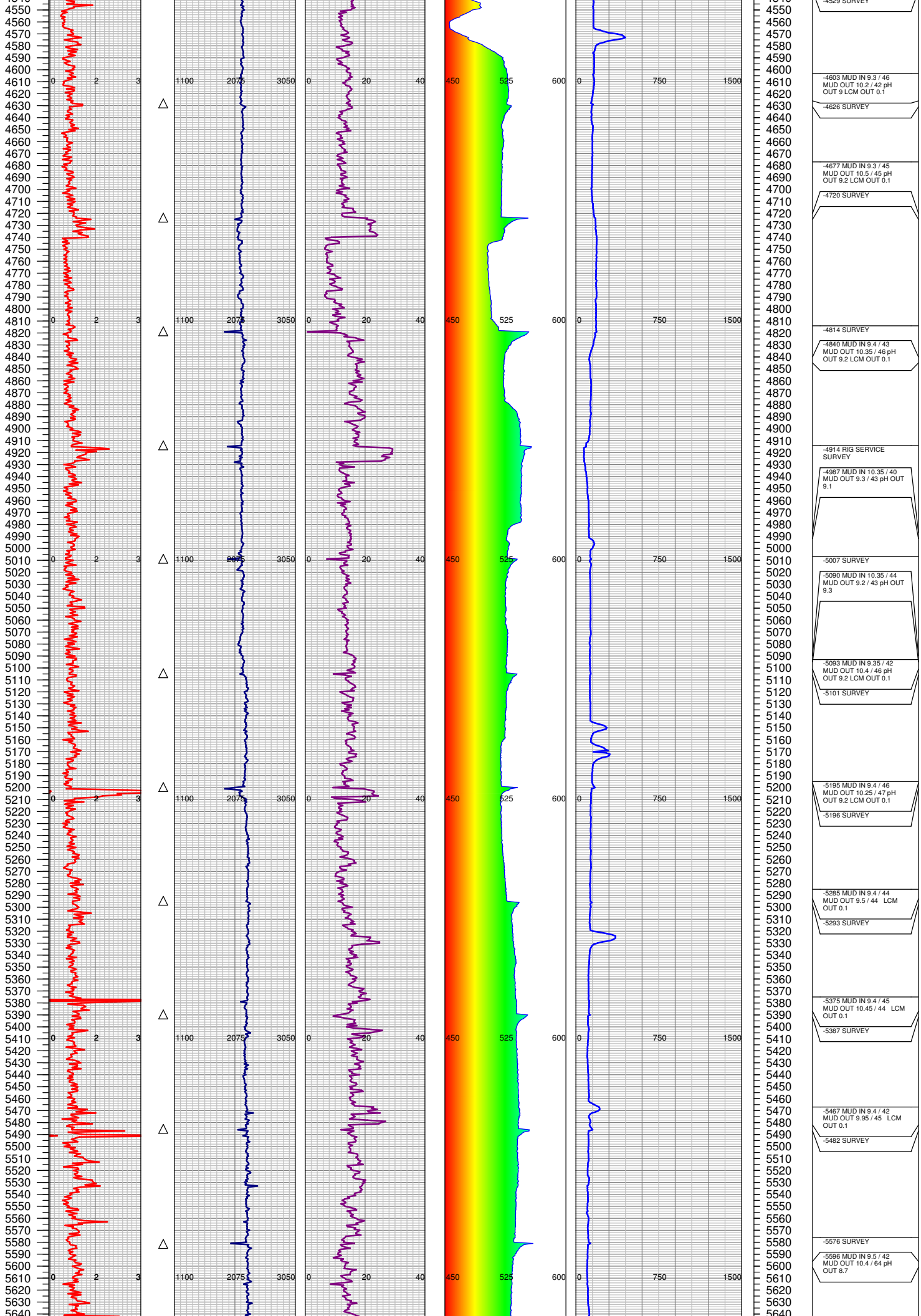
FGS BEGIN LOGGING: 9/6/2014

TD DATE: 9/12/2014

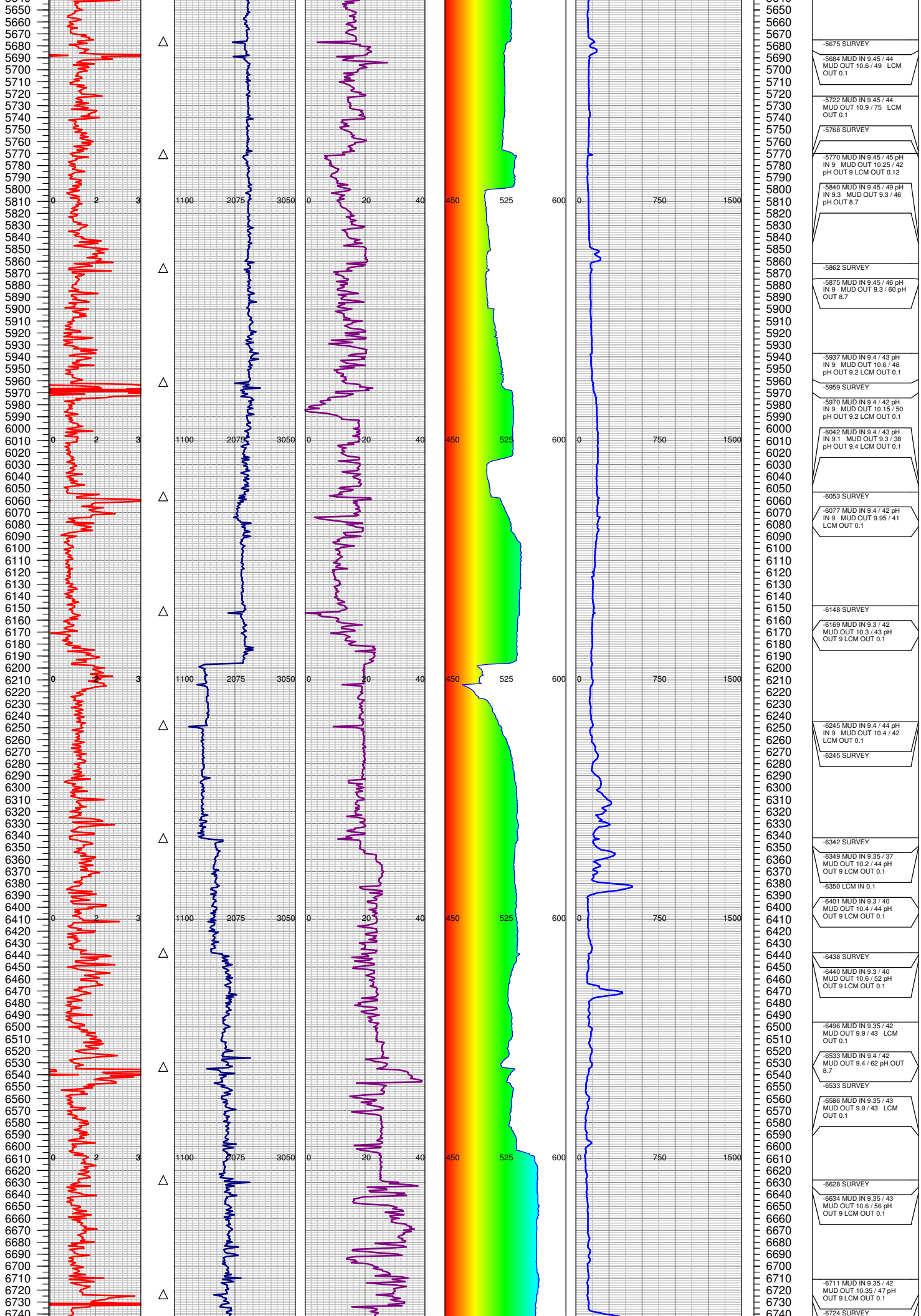
DATES LOGGED: 9/6/2014-9/12/2014

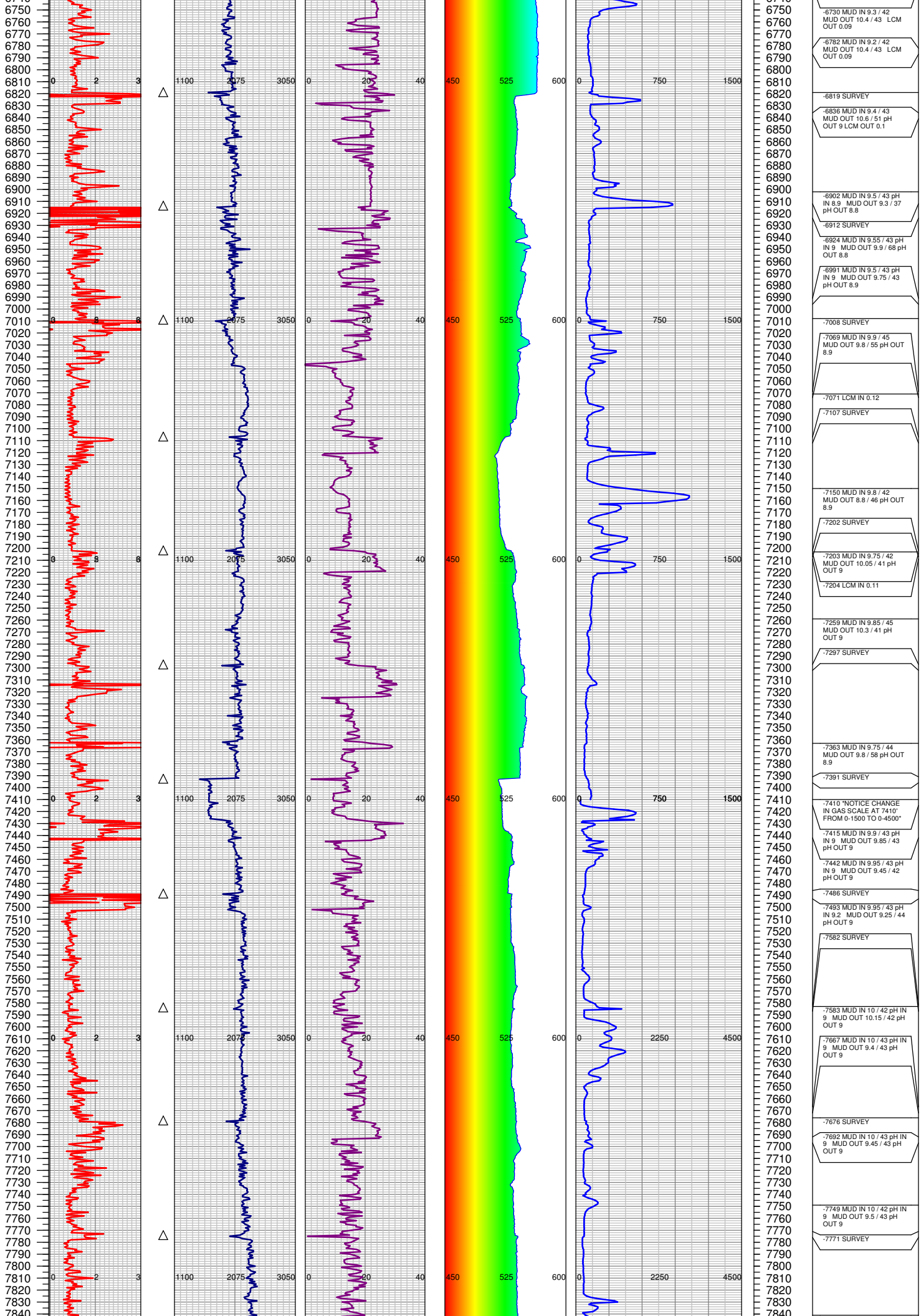


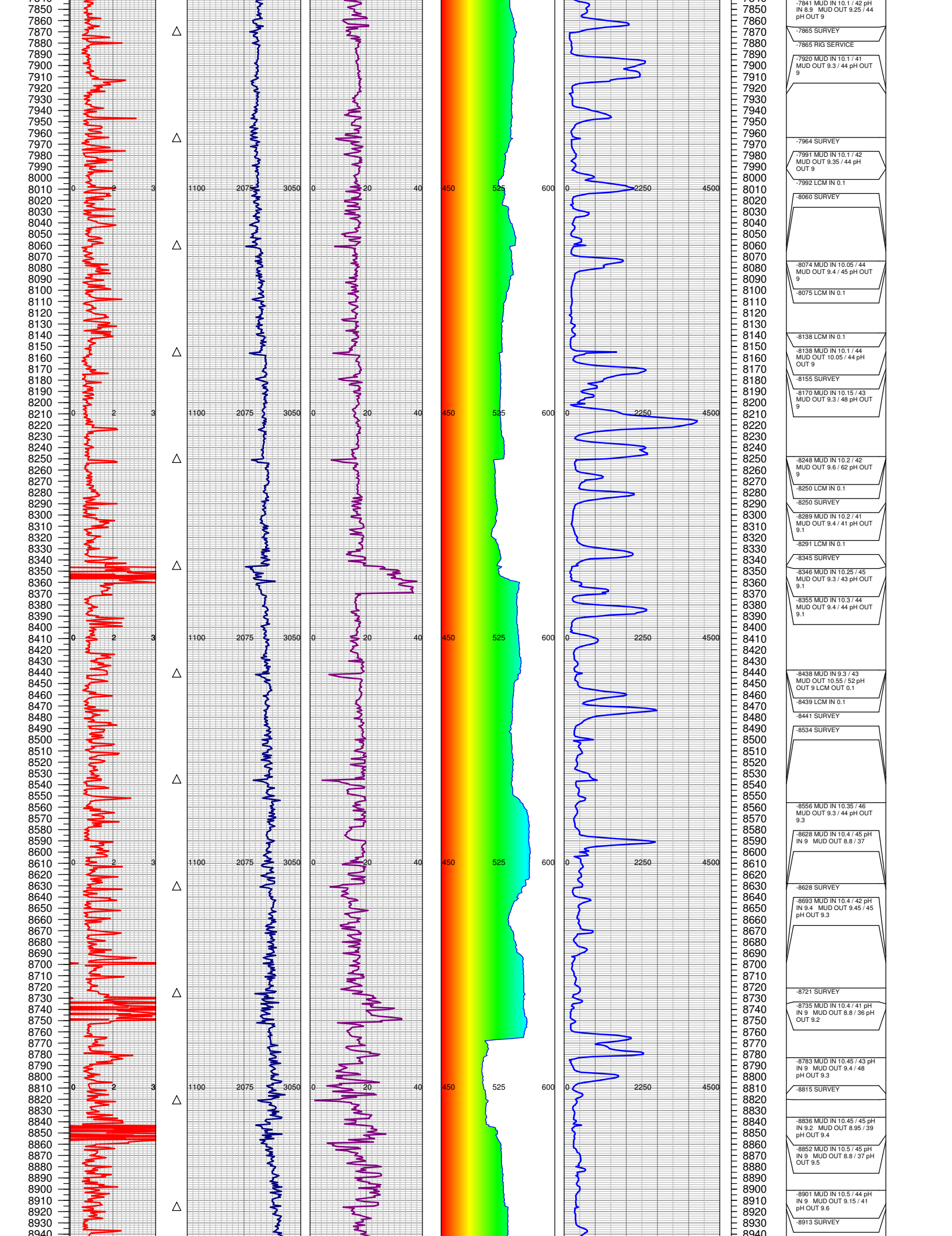


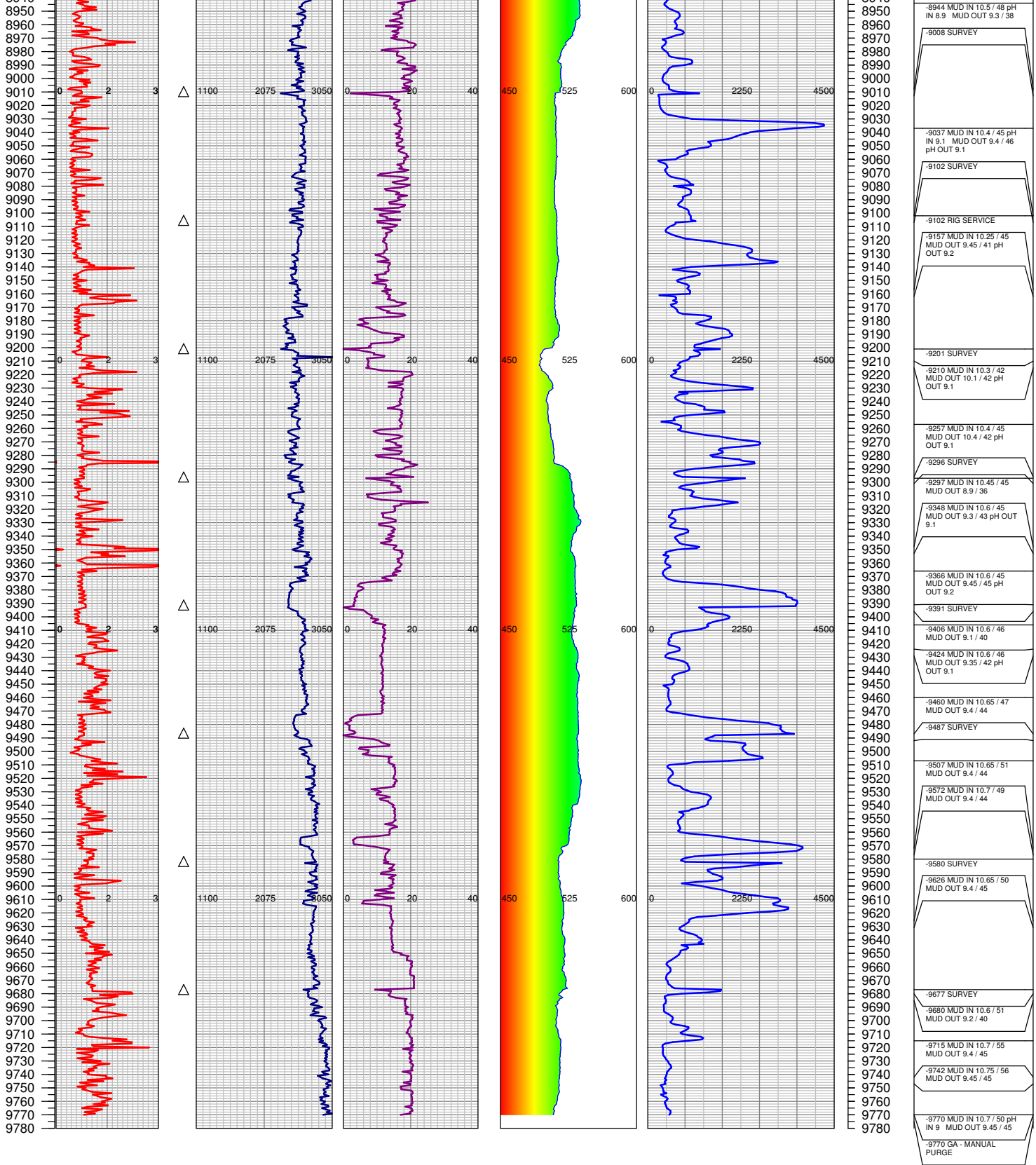


4550	-529 SURVEY
4560	
4570	
4580	
4590	
4600	
4610	-4603 MUD IN 9.3 / 46
4620	MUD OUT 10.2 / 42 pH
4630	OUT 9 LCM OUT 0.1
4640	-4626 SURVEY
4650	
4660	
4670	
4680	-4677 MUD IN 9.3 / 45
4690	MUD OUT 10.5 / 45 pH
4700	OUT 9.2 LCM OUT 0.1
4710	-4720 SURVEY
4720	
4730	
4740	
4750	
4760	
4770	
4780	
4790	
4800	
4810	
4820	-4814 SURVEY
4830	
4840	-4840 MUD IN 9.4 / 43
4850	MUD OUT 10.35 / 46 pH
4860	OUT 9.2 LCM OUT 0.1
4870	
4880	
4890	
4900	
4910	
4920	-4914 RIG SERVICE
4930	SURVEY
4940	
4950	-4987 MUD IN 10.35 / 40
4960	MUD OUT 9.3 / 43 pH OUT
4970	9.1
4980	
4990	
5000	
5010	-5007 SURVEY
5020	
5030	-5090 MUD IN 10.35 / 44
5040	MUD OUT 9.2 / 43 pH OUT
5050	9.3
5060	
5070	
5080	
5090	
5100	-5093 MUD IN 9.35 / 42
5110	MUD OUT 10.4 / 46 pH
5120	OUT 9.2 LCM OUT 0.1
5130	-5101 SURVEY
5140	
5150	
5160	
5170	
5180	
5190	
5200	
5210	-5195 MUD IN 9.4 / 46
5220	MUD OUT 10.25 / 47 pH
5230	OUT 9.2 LCM OUT 0.1
5240	-5196 SURVEY
5250	
5260	
5270	
5280	
5290	
5300	-5285 MUD IN 9.4 / 44
5310	MUD OUT 9.5 / 44 LCM
5320	OUT 0.1
5330	-5293 SURVEY
5340	
5350	
5360	
5370	
5380	
5390	-5375 MUD IN 9.4 / 45
5400	MUD OUT 10.45 / 44 LCM
5410	OUT 0.1
5420	-5387 SURVEY
5430	
5440	
5450	
5460	
5470	
5480	-5467 MUD IN 9.4 / 42
5490	MUD OUT 9.95 / 45 LCM
5500	OUT 0.1
5510	-5482 SURVEY
5520	
5530	
5540	
5550	
5560	
5570	
5580	
5590	-5576 SURVEY
5600	
5610	-5596 MUD IN 9.5 / 42
5620	MUD OUT 10.4 / 64 pH
5630	OUT 8.7
5640	









TOTAL DEPTH = 9770'

FGS RELEASED: 9/12/2014