

WPX Rocky Mountain LLC - EBUS

AP 424-17-695

Nabors 573

Post Job Summary

Cement Surface Casing

Date Prepared: 08/27/2014

Job Date: 08/16/2014

Submitted by: Patrick Ealey – Grand Junction Cement Engineer

The Road to Excellence Starts with Safety

Sold To #: 300721	Ship To #: 3123283	Quote #:	Sales Order #: 0901591614
Customer: WPX ENERGY ROCKY MOUNTAIN LLC-EBUS		Customer Rep: HARRY SAMSON	
Well Name: AP		Well #: 424-17-695	API/UWI #: 05-045-21381-00
Field: PARACHUTE	City (SAP): PARACHUTE	County/Parish: GARFIELD	State: COLORADO
Legal Description: NE NW-20-6S-95W-47FNL-2492FWL			
Contractor: NABORS DRLG		Rig/Platform Name/Num: NABORS 573	
Job BOM: 7521			
Well Type: DIRECTIONAL GAS			
Sales Person: HALAMERICA\H110657		Srvc Supervisor: THOMAS PONDER	
Job			

Formation Name			
Formation Depth (MD)	Top		Bottom
Form Type	BHST		
Job depth MD	2548ft		Job Depth TVD
Water Depth			Wk Ht Above Floor 5ft
Perforation Depth (MD)	From		To

Well Data										
Description	New / Used	Size in	ID in	Weight lbm/ft	Thread	Grade	Top MD ft	Bottom MD ft	Top TVD ft	Bottom TVD ft
Open Hole Section			13.5				0	2548	0	0
Casing	0	9.625	9.001	32.3	8 RD	J-55	0	2548	0	0

Tools and Accessories									
Type	Size in	Qty	Make	Depth ft		Type	Size in	Qty	Make
Guide Shoe	9.625	1	WTF	2548.2		Top Plug	9.625	1	HES
Float Shoe	9.625					Bottom Plug	9.625		
Float Collar	9.625	1	WTF	2504.2		SSR plug set	9.625		
Insert Float	9.625					Plug Container	9.625	1	HES
Stage Tool	9.625					Centralizers	9.625		

Miscellaneous Materials											
Gelling Agt		Conc		Surfactant		Conc		Acid Type		Qty	Conc
Treatment Fld		Conc		Inhibitor		Conc		Sand Type		Size	Qty

Fluid Data										
Stage/Plug #: 1										
Fluid #	Stage Type	Fluid Name	Qty	Qty UoM	Mixing Density lbm/gal	Yield ft3/sack	Mix Fluid Gal	Rate bbl/min	Total Mix Fluid Gal	
1	Fresh Water	Fresh Water	20	bbl	8.34			4		
Fluid #	Stage Type	Fluid Name	Qty	Qty UoM	Mixing Density lbm/gal	Yield ft3/sack	Mix Fluid Gal	Rate bbl/min	Total Mix Fluid Gal	
2	VariCem GJ1	VARICEM (TM) CEMENT	410	sack	12.3	2.38		8	13.77	
13.77 Gal			FRESH WATER							

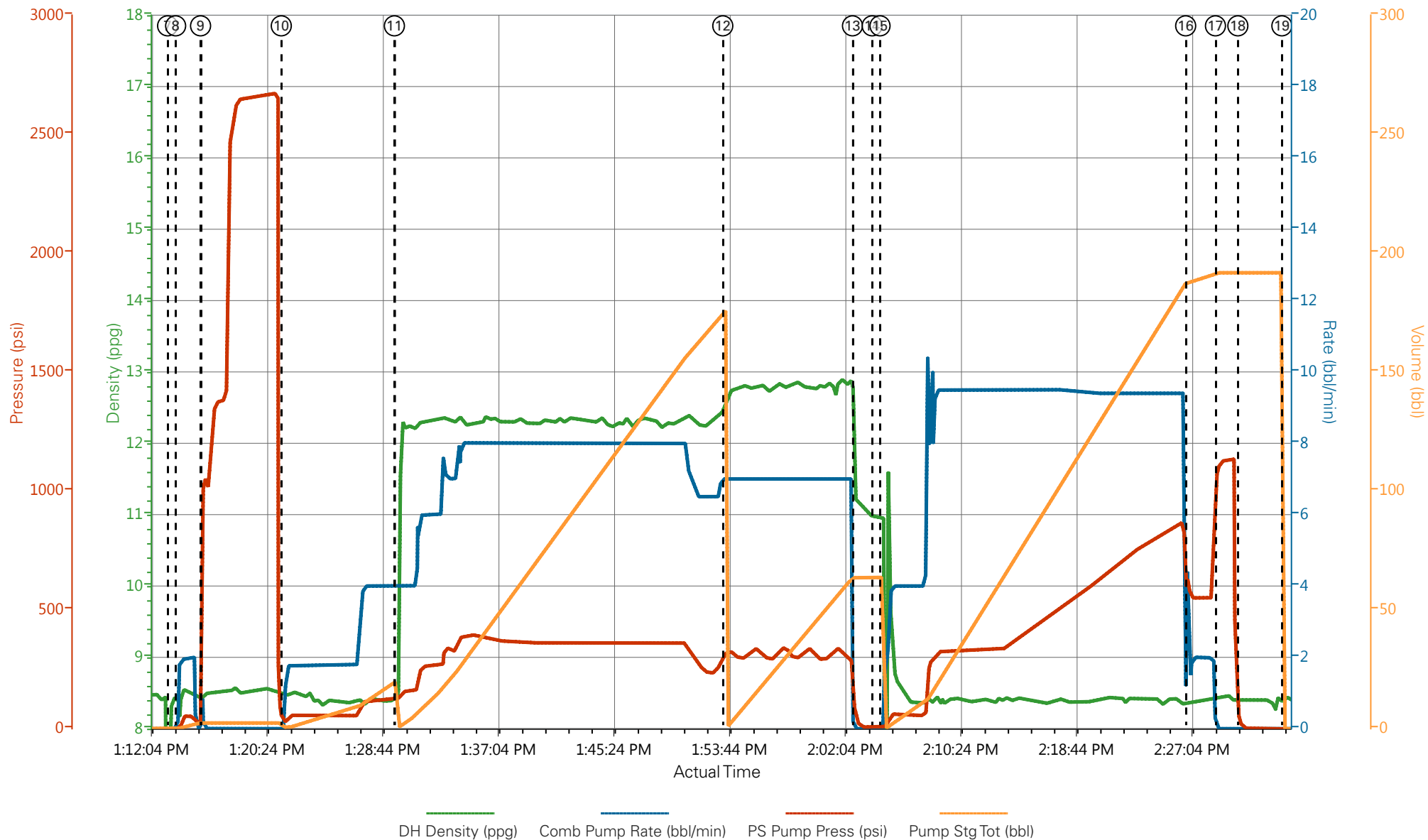
Fluid #	Stage Type	Fluid Name	Qty	Qty UoM	Mixing Density lbm/gal	Yield ft3/sack	Mix Fluid Gal	Rate bbl/min	Total Mix Fluid Gal
3	VariCem GJ1	VARICEM (TM) CEMENT	165	sack	12.8	2.11		8	11.77
11.77 Gal		FRESH WATER							
Fluid #	Stage Type	Fluid Name	Qty	Qty UoM	Mixing Density lbm/gal	Yield ft3/sack	Mix Fluid Gal	Rate bbl/min	Total Mix Fluid Gal
4	Fresh Water Displacement	Fresh Water Displacement	197.1	bbl	8.34			10	
Cement Left In Pipe		Amount	44 ft		Reason		Shoe Joint		
Comment									

1.1 Job Event Log

Type	Seq. No.	Activity	Graph Label	Date	Time	Source	DH Density (ppg)	Comb Pump Rate (bbl/min)	PS Pump Press (psi)	Pump Stg Tot (bbl)	Comment
Event	1	Call Out	Call Out	8/16/2014	05:00:00	USER					ON LOCATION TIME @ 1000
Event	2	Crew Leave Yard	Crew Leave Yard	8/16/2014	08:00:00	USER					ALL HES PRESENT FOR PRE-CONVOY SAFETY HUDDLE
Event	3	Arrive At Loc	Arrive At Loc	8/16/2014	10:00:00	USER					RIG WAS STILL RUNNING CASING WHEN CREW ARRIVED ON LOCATION, LOADED SILO WITH FREUHAUF
Event	4	Assessment Of Location Safety Meeting	Assessment Of Location Safety Meeting	8/16/2014	11:30:00	USER					TD- 2548.2', TP- 2548.2', SJ- 44', MUD- 9.9 PPG, HOLE- 13 1/2", SURFACE CASING- 9 5/8" 32.3# H-40
Event	5	Rig-Up Equipment	Rig-Up Equipment	8/16/2014	12:00:00	USER					1-550 PICKUP, 1-ELITE PUMP, 1-660 CUFT BULK TRUCK, 1- 1700 CUFT STORAGER SILO
Event	6	Pre-Job Safety Meeting	Pre-Job Safety Meeting	8/16/2014	13:00:00	USER					ALL HES PRESENT, RIG CREW PRESENT, RIG TD CASING @ 1130
Event	7	Start Job	Start Job	8/16/2014	13:13:26	COM6					
Event	8	Prime Pumps	Prime Pumps	8/16/2014	13:14:01	COM6	8.33	2	57	2	FILL LINES
Event	9	Test Lines	Test Lines	8/16/2014	13:15:49	COM6		.1	2672	.1	GOOD PRESSURE TEST NO LEAKS IN THE LINES
Event	10	Pump Spacer 1	Pump Spacer 1	8/16/2014	13:21:38	COM6	8.33	4	120	20	FRESH WATER, STARTED RECIPROCATING THE WORK STRING
Event	11	Pump Lead Cement	Pump Lead Cement	8/16/2014	13:29:47	COM6	12.3	8	400	173.8	410 SKS 12.3 PPG 2.38 FT3/SK 13.77 GAL/SK, SLOWED RATE AT THE END OF LEAD TO ENSURE THAT DENSITY WAS KEPT AT THE END OF THE SILO
Event	12	Pump Tail Cement	Pump Tail Cement	8/16/2014	13:53:27	COM6	12.8	7	340	62	165 SKS 12.8 PPG 2.11 FT3/SK 11.77 GAL/SK

Event	13	Shutdown	Shutdown	8/16/2014	14:02:48	USER						
Event	14	Drop Top Plug	Drop Top Plug	8/16/2014	14:04:13	USER						PLUG DROP VERIFIED VIA TATTLE TELL
Event	15	Pump Displacement	Pump Displacement	8/16/2014	14:04:47	COM6	8.33	10	879	187		FRESH WATER, WASHED UP ON TOP OF THE PLUG WITH THE FIRST 10 BBL OF DISPLACEMENT OUT OF THE MIXING TUB
Event	16	Slow Rate	Slow Rate	8/16/2014	14:26:49	USER	8.33	2	543	10.1		GOOD RETURNS THROUGHOUT THE JOB, RECIPROCATED UNTIL CEMENT CAME TO SURFACE, CIRCULATED 35 BBL OF CEMENT TO SURFACE
Event	17	Bump Plug	Bump Plug	8/16/2014	14:28:58	USER		2	550	197.1		PLUG BUMPED
Event	18	Check Floats	Check Floats	8/16/2014	14:30:34	USER			1133	197.1		FLOATS HELD, 1 BBL BACK TO THE DISPLACEMENT TANKS
Event	19	End Job	End Job	8/16/2014	14:33:45	COM6						THANK YOU FOR CHOOSING HALLIBURTON, THOMAS PONDER AND CREW

WPX - AP 424-17-695 - 9.625 IN SURFACE



- | | | | | | | |
|-------------------|---|---------------|--------------------|---------------------|----------------|-----------|
| ① Call Out | ④ Assessment Of Location Safety Meeting | ⑦ Start Job | ⑩ Pump Spacer 1 | ⑬ Shutdown | ⑯ Slow Rate | ⑲ End Job |
| ② Crew Leave Yard | ⑤ Rig-Up Equipment | ⑧ Prime Pumps | ⑪ Pump Lead Cement | ⑭ Drop Top Plug | ⑰ Bump Plug | |
| ③ Arrive At Loc | ⑥ Pre-Job Safety Meeting | ⑨ Test Lines | ⑫ Pump Tail Cement | ⑮ Pump Displacement | ⑱ Check Floats | |

▼ **HALLIBURTON** | iCem® Service

Created: 2014-08-16 11:48:50, Version: 3.0.121

Edit

Customer: WPX ENERGY ROCKY MOUNTAIN LLC-EBUS

Job Date: 8/16/2014 12:35:43 PM

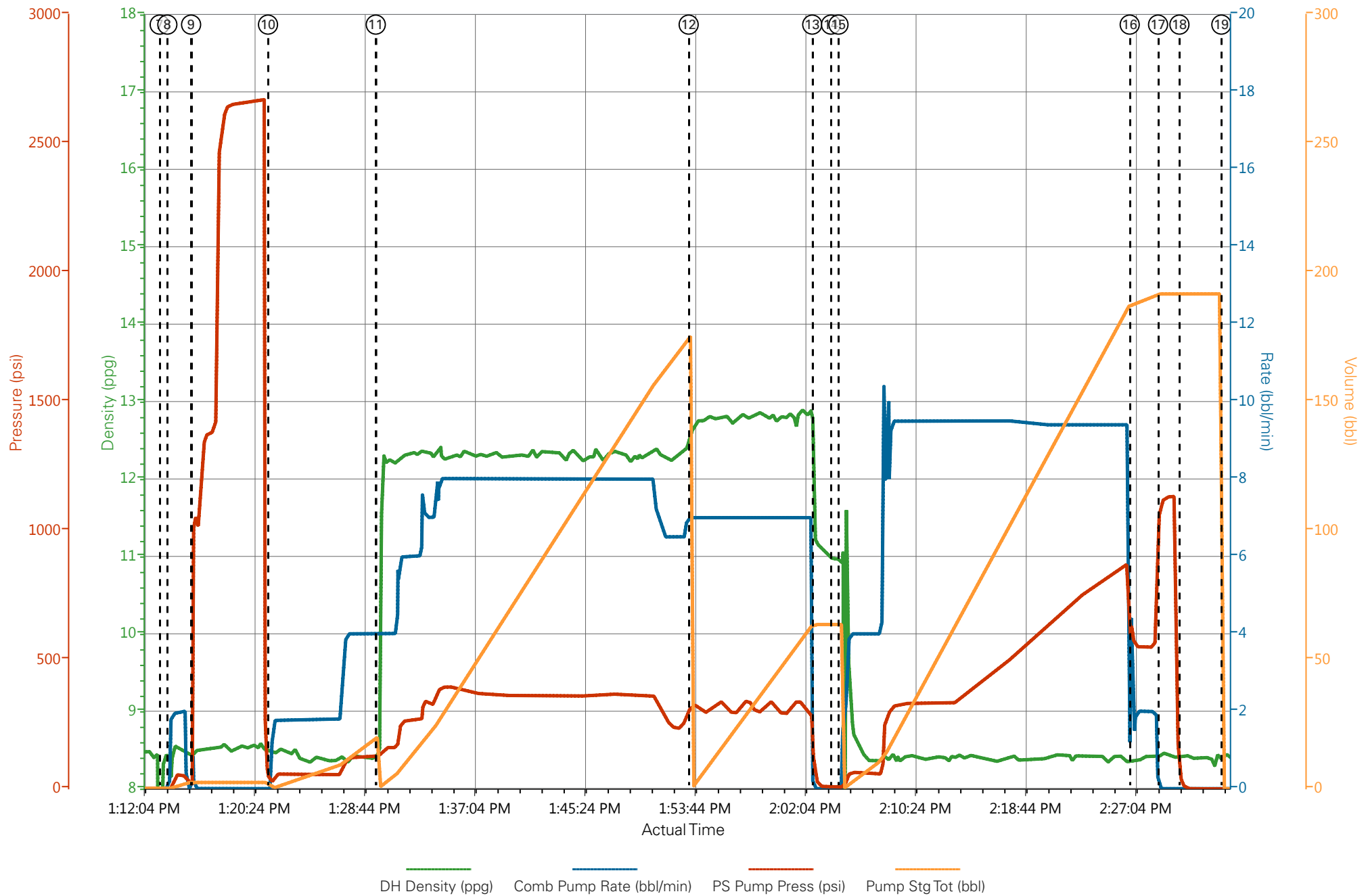
Well: AP 424-17-695

Representative: HARRY SAMSON

Sales Order #: 901591614

ELITE #7: TRAVIS BROWN / THOMAS PONDER

WPX - AP 424-17-695 - 9.625 IN SURFACE



HALLIBURTON

Company:	<u>WPX</u>	Date:	<u>8/16/2014</u>
Submitted by:	<u>THOMAS PONDER</u>	Date Rec.:	<u>8/16/2014</u>
Attention:	<u>LARRY COOKSEY</u>	S.O.#	<u>901591614</u>
Lease	<u>AP</u>	Job Type:	<u>SURFACE</u>
Well #	<u>424-17-695</u>		

Specific Gravity	<i>MAX</i>	<i>1</i>
pH	<i>8</i>	<i>7.2</i>
Potassium (K)	<i>5000</i>	<i>0 Mg / L</i>
Calcium (Ca)	<i>500</i>	<i>0 Mg / L</i>
Iron (FE2)	<i>300</i>	<i>0 Mg / L</i>
Chlorides (Cl)	<i>3000</i>	<i>0 Mg / L</i>
Sulfates (SO ₄)	<i>1500</i>	<i><200 Mg / L</i>
Carbonates hardness		
Temp	<i>40-80</i>	<i>78 Deg</i>
Total Dissolved Solids		<i>215 Mg / L</i>

Respectfully: THOMAS PONDER

Title: CEMENTING SUPERVISOR

Location: GRAND JCT, CO

Sales Order #: 0901591614	Line Item: 10	Survey Conducted Date: 8/16/2014
Customer: WPX ENERGY ROCKY MOUNTAIN LLC-EBUS		Job Type (BOM): CMT SURFACE CASING BOM
Customer Representative: HARRY SAMSON		API / UWI: (leave blank if unknown) 05-045-21381-00
Well Name: AP		Well Number: 0080125211
Well Type: DIRECTIONAL GAS	Well Country: USA	
H2S Present: No	Well State: COLORADO	Well County: GARFIELD

Dear Customer,

We hope that you were satisfied with the service quality of this job performed by Halliburton. It is the aim of our management and service personnel to deliver equipment and service of a standard unmatched in the service sector of the energy industry.

Please take the time to let us know if our performance met with your satisfaction. Please be as critical as possible to ensure we constantly improve our service. Your comments are of great value to us and are intended for the exclusive use of Halliburton.

CUSTOMER SATISFACTION SURVEY

CATEGORY	CUSTOMER SATISFACTION RESPONSE	
Survey Conducted Date	The date the survey was conducted	8/16/2014
Survey Interviewer	The survey interviewer is the person who initiated the survey.	HX41187
Customer Participation	Did the customer participate in this survey? (Y/N)	Yes
Customer Representative	Enter the Customer representative name	HARRY SAMSON
HSE	Was our HSE performance satisfactory? Circle Y or N	Yes
Equipment	Were you satisfied with our Equipment? Circle Y or N	Yes
Personnel	Were you satisfied with our people? Circle Y or N	Yes
Customer Comment	Customer's Comment	

CUSTOMER SIGNATURE

Sales Order #: 0901591614	Line Item: 10	Survey Conducted Date: 8/16/2014
Customer: WPX ENERGY ROCKY MOUNTAIN LLC-EBUS		Job Type (BOM): CMT SURFACE CASING BOM
Customer Representative: HARRY SAMSON		API / UWI: (leave blank if unknown) 05-045-21381-00
Well Name: AP		Well Number: 0080125211
Well Type: DIRECTIONAL GAS	Well Country: USA	
H2S Present: No	Well State: COLORADO	Well County: GARFIELD

KEY PERFORMANCE INDICATORS

General	
Survey Conducted Date The date the survey was conducted	8/16/2014

Cementing KPI Survey	
Type of Job Select the type of job. (Cementing or Non-Cementing)	0
Select the Maximum Deviation range for this Job What is the highest deviation for the job you just completed? This may not be the maximum well deviation.	Vertical
Total Operating Time (hours) Total Operating Hours Including Rig-up, Pumping, Rig-down. Enter in decimal format.	4
HSE Incident, Accident, Injury HSE Incident, Accident, Injury. This should be recordable incidents only.	No
Was the job purpose achieved? Was the job delivered correctly as per customer agreed design?	Yes
Operating Hours (Pumping Hours) Total number of hours pumping fluid on this job. Enter in decimal format.	1.5
Customer Non-Productive Rig Time (hrs) Lost time due to Halliburton in the start, execution, or completion of an ordered service or product, or delays in a follow-on service. Enter in decimal format. 0 if none.	0
Type of Rig Classification Job Was Performed Type Of Rig (classification) Job Was Performed On	Drilling Rig (Portable)
Number Of JSAs Performed Number Of Jsas Performed	6
Number of Unplanned Shutdowns Unplanned shutdown is when injection stops for any period of time.	0
Was this a Primary Cement Job (Yes / No)	Yes

Sales Order #: 0901591614	Line Item: 10	Survey Conducted Date: 8/16/2014
Customer: WPX ENERGY ROCKY MOUNTAIN LLC-EBUS		Job Type (BOM): CMT SURFACE CASING BOM
Customer Representative: HARRY SAMSON		API / UWI: (leave blank if unknown) 05-045-21381-00
Well Name: AP		Well Number: 0080125211
Well Type: DIRECTIONAL GAS	Well Country: USA	
H2S Present: No	Well State: COLORADO	Well County: GARFIELD

Primary Cement Job= Casing job, Liner job, or Tie-back job.	
Did We Run Wiper Plugs? Did We Run Top And Bottom Casing Wiper Plugs?	Top
Mixing Density of Job Stayed in Designed Density Range (0-100%) Density Range defined as +/- .20 ppg. Calculation: Total BBLs cement mixed at designed density divided by total BBLs of cement multiplied by 100	99
Was Automated Density Control Used? Was Automated Density Control (ADC) Used ?	Yes
Pump Rate (percent) of Job Stayed At Designed Pump Rate Pump Rate range defined as +/- 1bbl/min. Calculation: Total BBLs of fluid pumped at the designed rate divided by Total BBLs of fluid pumped, multiplied by 100	99
Nbr of Remedial Sqz Jobs Rqd - Competition Number Of Remedial Squeeze Jobs Required After Primary Job Performed By Competition	0
Nbr of Remedial Plug Jobs Rqd - HES Number Of Remedial Plug Jobs Needed After Primary Plug Pumped By HES	0
Nbr of Remedial Sqz Jobs Rqd - HES Number Of Remedial Squeeze Jobs Required After Primary Job Performed By HES	0