



RESERVOIR PERFORMANCE MONITOR

Baker Atlas

File No: CH090082	Company Well Field County	WPX ENERGY AP 424-17-695 PARACHUTE GARFIELD	State COLORADO
API No: 05045213810000	Location SHL: 32' FNL & 2488' FWL (20 6S 95W) BHL: 519' FSL & 2243' FWL (17 6S 95W) SEC 17 TWP 6S RGE 95W		Other Services BOND LOG
17 6S 95W AP 21-20-695 PAD NABORS 673	Permanent Datum Log Measured From Drill Measured From		Elevations KB 6935 ft DF GL 6909 ft
GL KB 26 ft KELLY BUSHING		Above P. D.	

Date	11/OCT/14	
Run	ONE	
Service Order	US090082J	
Depth Driller	9501 ft	
Depth Logger	9468 ft	
Bottom Logged Interval	9458 ft	
Top Logged Interval	5767 ft	
Time Started	14:00	
Time Finished	20:30	
Operator Rig Time	6.5 HRS	
Type of Fluid in Hole	WATER	
Fluid Density	NA	
Salinity	NA	
Fluid Level	76 ft	
Logged Cement Top	NA	
Wellhead Pressure	0 psi	
Maximum Hole Deviation	NA	
Nominal Logging Speed	10 fpm	
Maximum Recorded Temperature	262 degF	
Reference Log Date	11/OCT/14	
Equipment No.	4271	GRAND JCT
Recorded By	FLOYD RENEAU	
Witnessed By	ORAN JACOBS	

- FOLD HERE

In making interpretations of logs, our employees will give the customer the benefit of their best judgement. But since all interpretations are opinions based on inferences from electrical or other measurements, we cannot, and we do not guarantee the accuracy or correctness of any interpretation. We shall not be liable or responsible for any loss, cost, damages, or expenses whatsoever incurred or sustained by the customer resulting from any interpretation made by any of our employees.

Borehole Record		
Bit Size	From	To
13.5 in	26 ft	2508 ft
8.75 in	2508 ft	9501 ft

Casing Record				
Size	Weight	Grade	From	To
9.625 in			26 ft	2508 ft
4.5 in	11.6 lbm/ft	I-80	26 ft	9501 ft

Remarks
All data on this log is shifted and depth matched using the Gamma Ray curve to the Baker Hughes bond log dated 10/11/2014 at the client's request.
The amount of linear shift is -3 feet.
Logged in PNC-3D mode.
BHT = 262°F
SJ = 5831'-5853'

Equipment Data					
Run	Trip	Tool	Series Number	Serial Number	Position
1	1	TEMP	8255XA	Z120516	FREE
1	1	RPM	8281FA	10460082	FREE
1	1	RPM	8281PA	10169251	FREE
1	1	RPM	8281EA	10423671	FREE
1	1	GR	2812LA	10274382	FREE
1	1	TEL/CCL	8248ED	10296408	FREE
1	1	PCM	8250EA	10397894	FREE

MAIN SECTION
PNC 3-D MODE

SPL PROCESSING

MEASUREMENT TYPE	PARAMETER	VALUE	UNITS	TOP	BOTTOM
PNC Porosity	Borehole	Cased		5749.750	5810.000
PNC Porosity	Borehole Size	8.750	inch	5749.750	5810.000
PNC Porosity	Casing Size	4.500	inch	5749.750	5810.000
PNC Porosity	Gas Filled	Non Gas Filled		5749.750	5810.000
PNC Porosity	Matrix	Sandstone		5749.750	5810.000
TPS Pressure	Temperature Corr. Source	Fixed (72.00)	degF	5749.750	5810.000
PNC Porosity	Borehole	Cased		5810.000	6112.000
PNC Porosity	Borehole Size	8.750	inch	5810.000	6112.000
PNC Porosity	Casing Size	4.500	inch	5810.000	6112.000
PNC Porosity	Gas Filled	Non Gas Filled		5810.000	6112.000
PNC Porosity	Matrix	Sandstone		5810.000	6112.000
TPS Pressure	Temperature Corr. Source	Fixed (72.00)	degF	5810.000	6112.000
PNC Porosity	Borehole	Cased		6122.284	6877.000
PNC Porosity	Borehole Size	8.750	inch	6122.284	6877.000
PNC Porosity	Casing Size	4.500	inch	6122.284	6877.000
PNC Porosity	Gas Filled	Non Gas Filled		6122.284	6877.000
PNC Porosity	Matrix	Sandstone		6122.284	6877.000
TPS Pressure	Temperature Corr. Source	Fixed (72.00)	degF	6122.284	6877.000
PNC Porosity	Borehole	Cased		6879.250	7690.000
PNC Porosity	Borehole Size	8.750	inch	6879.250	7690.000
PNC Porosity	Casing Size	4.500	inch	6879.250	7690.000
PNC Porosity	Gas Filled	Non Gas Filled		6879.250	7690.000
PNC Porosity	Matrix	Sandstone		6879.250	7690.000
TPS Pressure	Temperature Corr. Source	Fixed (72.00)	degF	6879.250	7690.000

PNC Porosity	Casing Size	4.500	inch	6879.250	7690.000
PNC Porosity	Gas Filled	Non Gas Filled			
PNC Porosity	Matrix	Sandstone		6879.250	7690.000
TPS Pressure	Temperature Corr. Source	Fixed (72.00)	degF	6879.250	7690.000
PNC Porosity	Borehole	Cased		7699.659	9484.000
PNC Porosity	Borehole Size	8.750	inch	7699.659	9484.000
PNC Porosity	Casing Size	4.500	inch	7699.659	9484.000
PNC Porosity	Gas Filled	Non Gas Filled		7699.659	9484.000
PNC Porosity	Matrix	Sandstone		7699.659	9484.000
TPS Pressure	Temperature Corr. Source	Fixed (72.00)	degF	7699.659	9484.000

DEPTH OFFSETS

(for Acquired Curves)

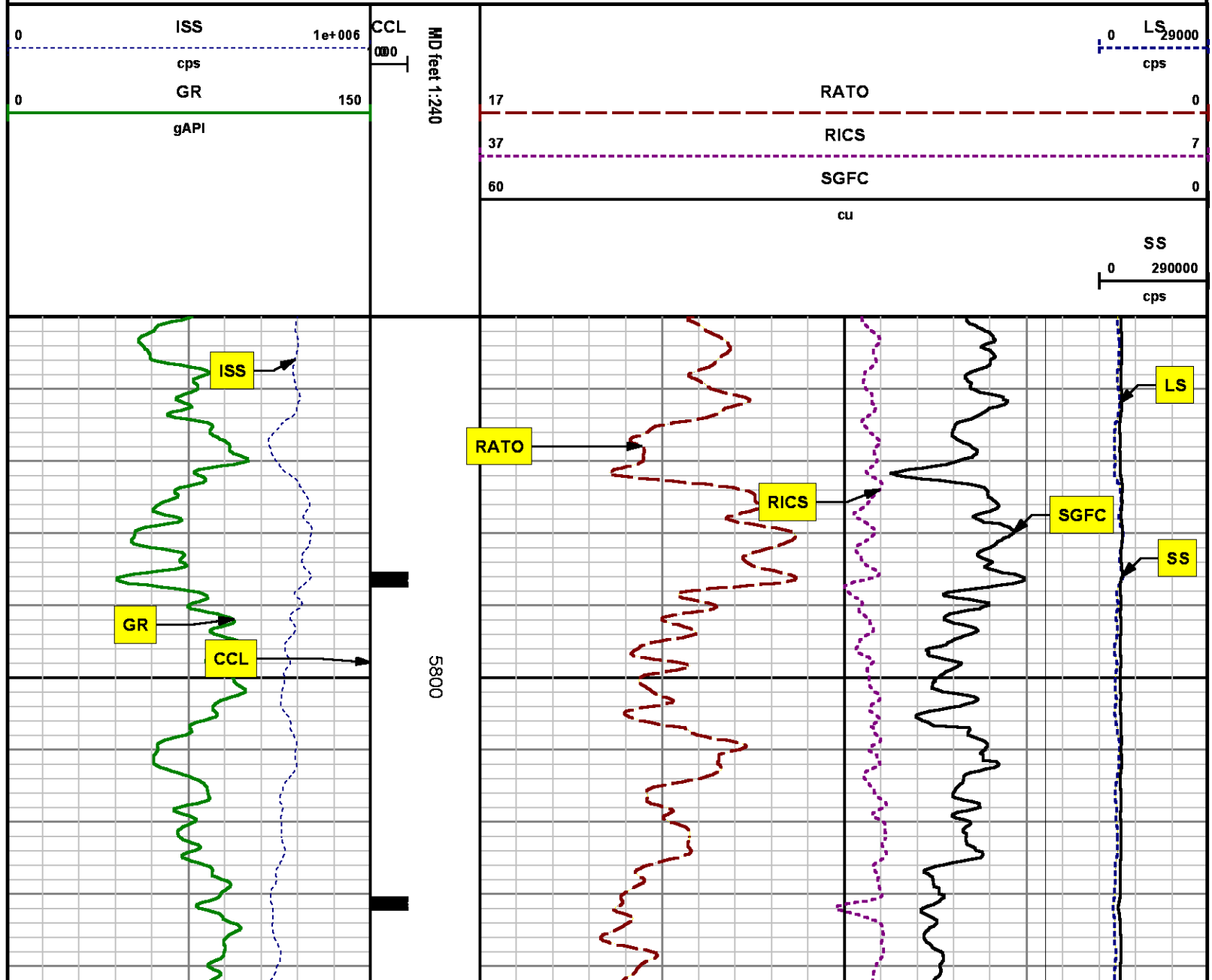
SERIES	DEPTH OFFSET	ACQUIRED CURVES
8248ED	-26.519	FLTM
8248ED	-24.519	CCL CHV
2812LA	-21.969	GR
8281XA	-12.702	HVC3Q0 SEQ3 AMA3 AML3 BKX CXS CPT3Q0 CPT3Q2 CPT3Q3 CPT3Q4 ET3 IXS MCS3 MCS3Q0 QCAL3 RGN3 RICX SDA3 SDL3 SGA3 SGL3 STA3 XS ASPEC3 AMB3 AMF3 CHF3 IXSC IXSN RATO23 RICXC RIN13C RIN23 RIN23C SD3D SG3D SGB3 SGF3 WDT3 CXSR IXSR XSR RICXR
8281XA	-12.291	HVC2Q0 SEQ2 AMA2 AMB2 AMF2 AML2 BKL CHF2 CLS CPT2Q0 CPT2Q2 CPT2Q3 CPT2Q4 ET2 ILS LS MCS2 MCS2Q0 QCAL2 RGN2 RICL RONE23 RTWO23 SDA2 SDL2 SGA2 SGB2 SGF2 SGK2 SGL2 STA2 ASPEC2 ILSC ILSN WDT2 RICLC CLSR ILSR LSR RICLR
8281XA	-12.041	CPRS HVC1Q0 MV SEQ SEQ1 AMA1 AMB1 AME1 AMF1 AML1 BKS CHF1 CSS CORB CORF CPT1Q0 CPT1Q2 CPT1Q2A CPT1Q2B CPT1Q2C CPT1Q3 CPT1Q4 CPT1Q5 ET1 G1 G2 GE1S GE2S ISS MCS1 MCS1Q0 QA1 QCAL1 QM1 RATO RATO13 RBOR RGN1 RICS RIN RONE RPOR RTWO RIN13 RONE13 RTWO13 SALB SC1 SDA1 SDL1 SGA1 SGB1 SBC SGE1 SGF1 SGFC SGK1 SGL1 SS SS2 STA1 PD1S PD2S PD3S MD1S MD2S MD3S DG1S DG2S DG3S PD1M PD2M PD3M MD1M MD2M MD3M DG1M DG2M DG3M MVS MA MVM FILV IAM TA PVM PVS IAS SSTAT QPD1 QPD2 QPD3 QMD1 QMD2 QMD3 QDG1 QDG2 QDG3 QMA QTA QFILV QMV QPV QV QFB QNT QK1 QK4

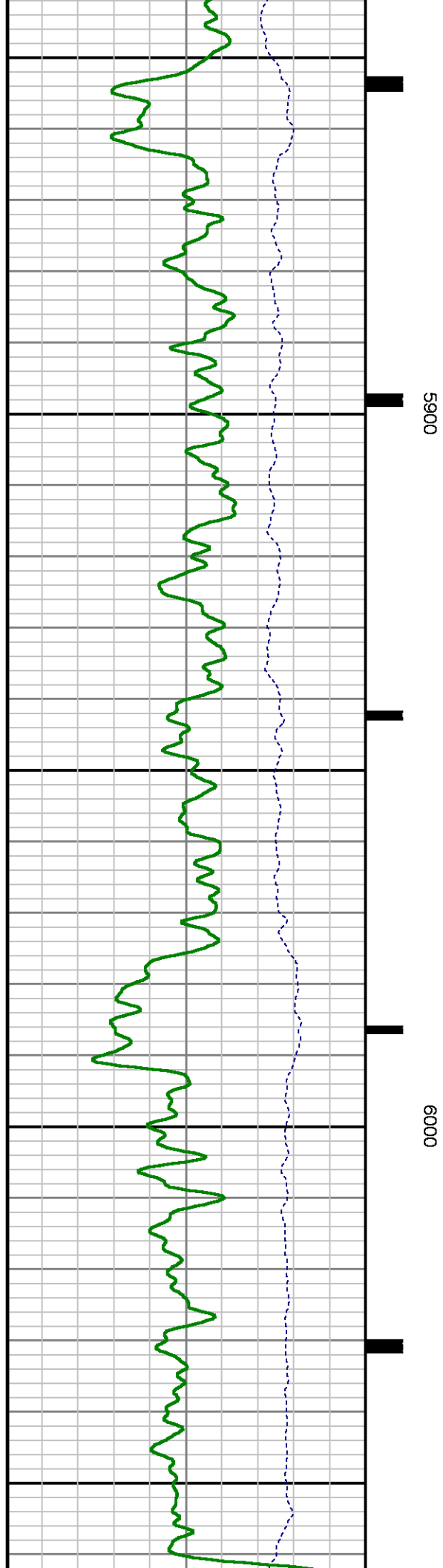
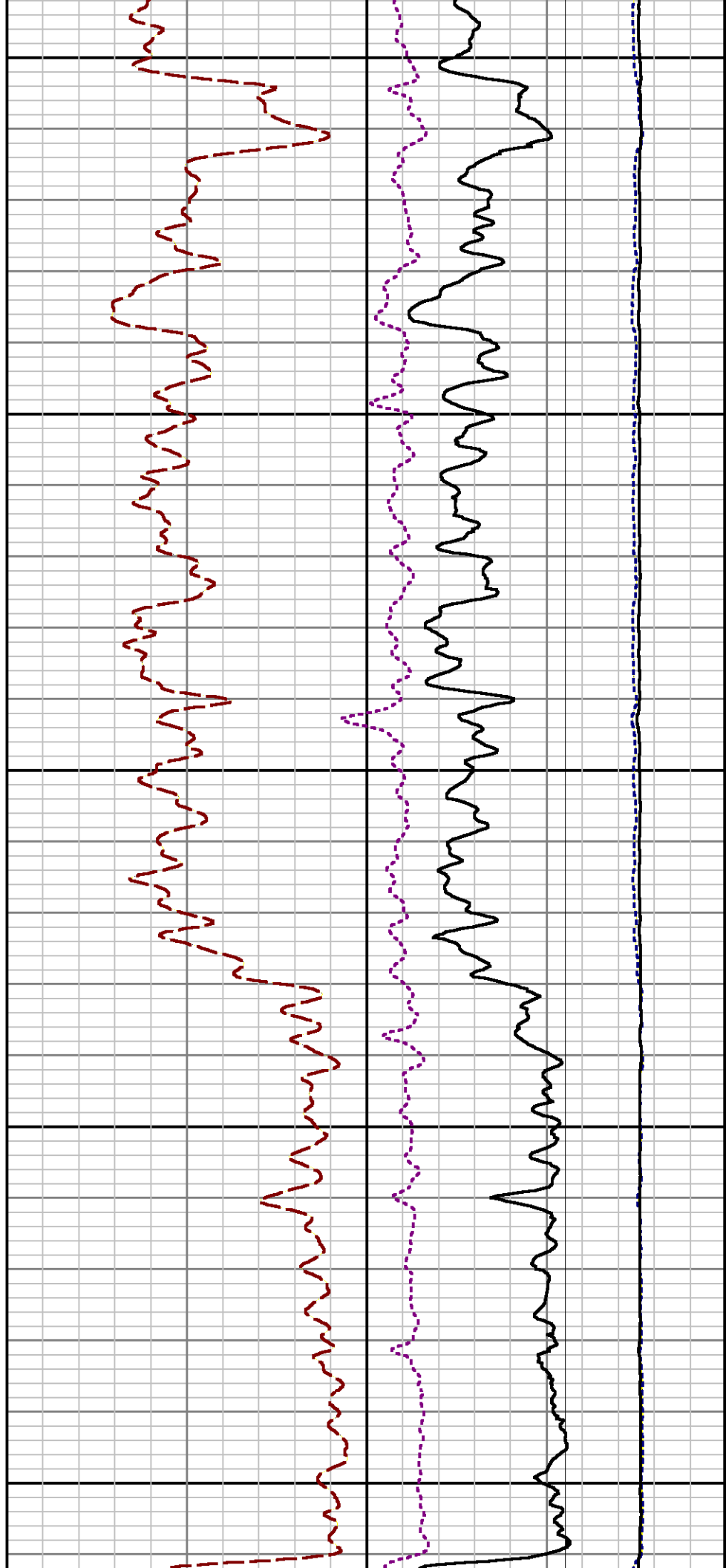
QPV	QIA	DERR	DCNT	QPKT	QSAT
PKS1	ASPEC1	H0C	FE2XC	ISSC	RINC
ISSN	RDEN	WDTH1	RICSC	CSSR	G1R
G2R	ISSR	SSR	SS2R	RATOR	RATO13R
RBORR	RICSR	RINR	RIN13R	RONER	RPORR
RTWOR					
PTFS	PTMS				
SPF1	SPFQ	TSCP	TSDP		
DTEM	TEMP	TNF			
TEN	TTEN				

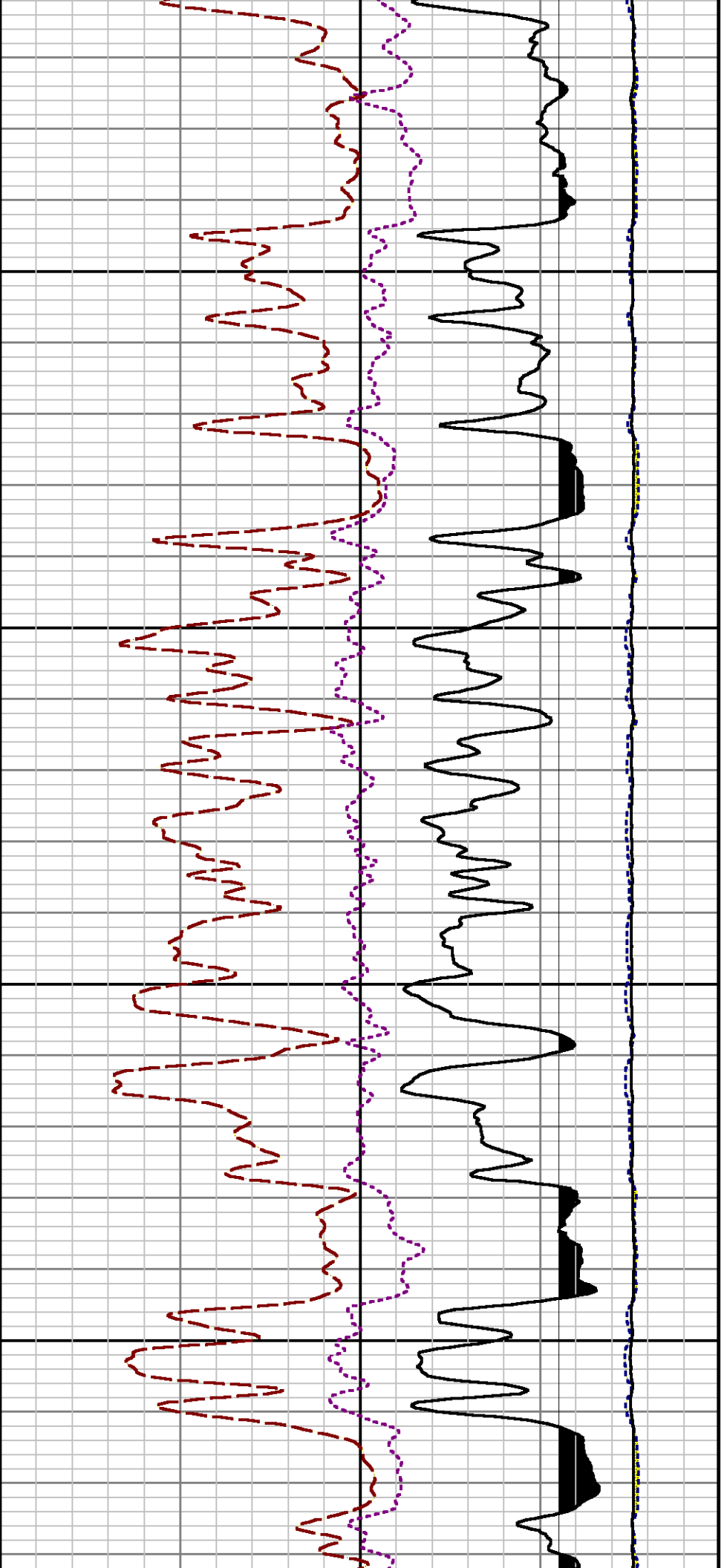
8255XA	-0.792
8255XA	-0.775
8255XA	0.000
SYSTEM	0.000

Created by : RPM9, v5.3.1.0
 Plotted by : PlotMgr, v5.4.504

Company : WPX ENERGY
 Well : AP 424-17-695
 File Name : d:\well\data\wpx\ap 424-17-695\rpm424\mainsplice.xtf
 Mode : PlotMgr 5.4.504
 Interval : 5750.00 - 9484.00 feet UP
 Created : 10/11/2014 7:50:35 PM

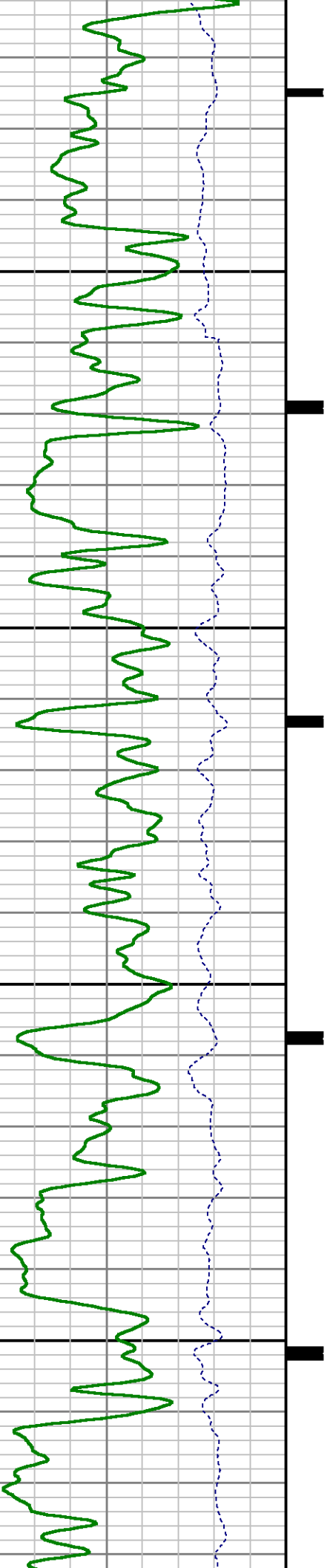


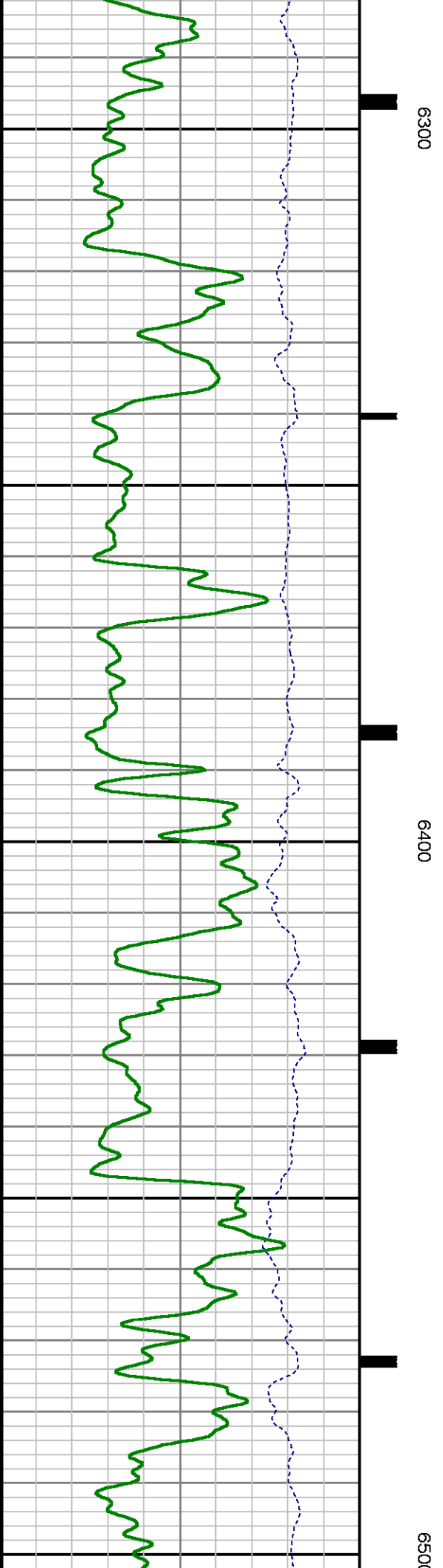
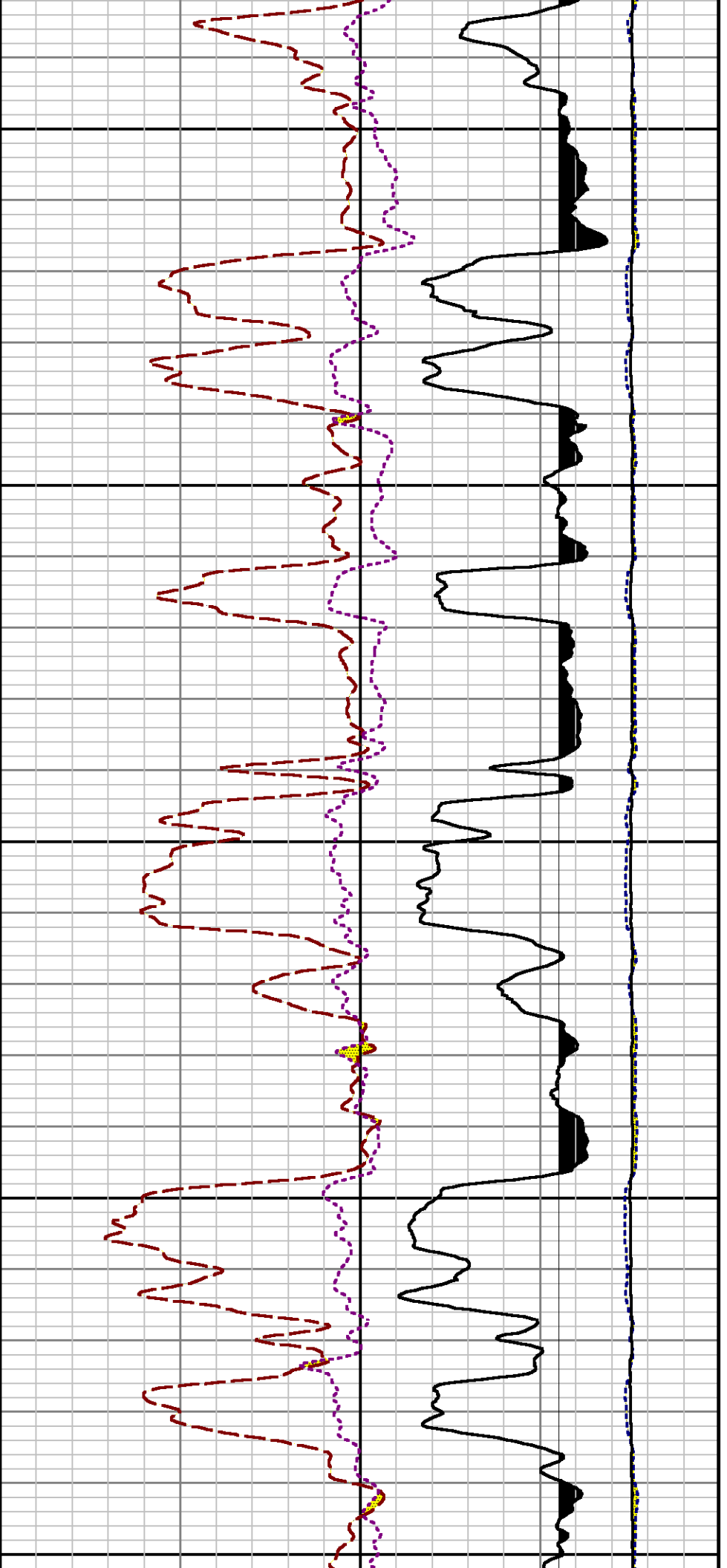


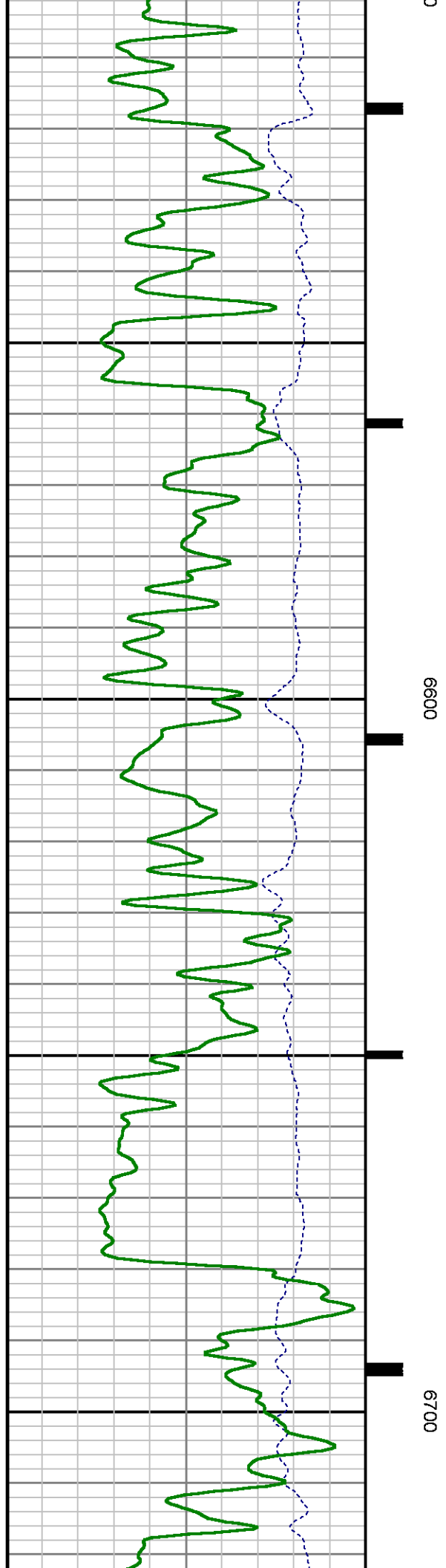
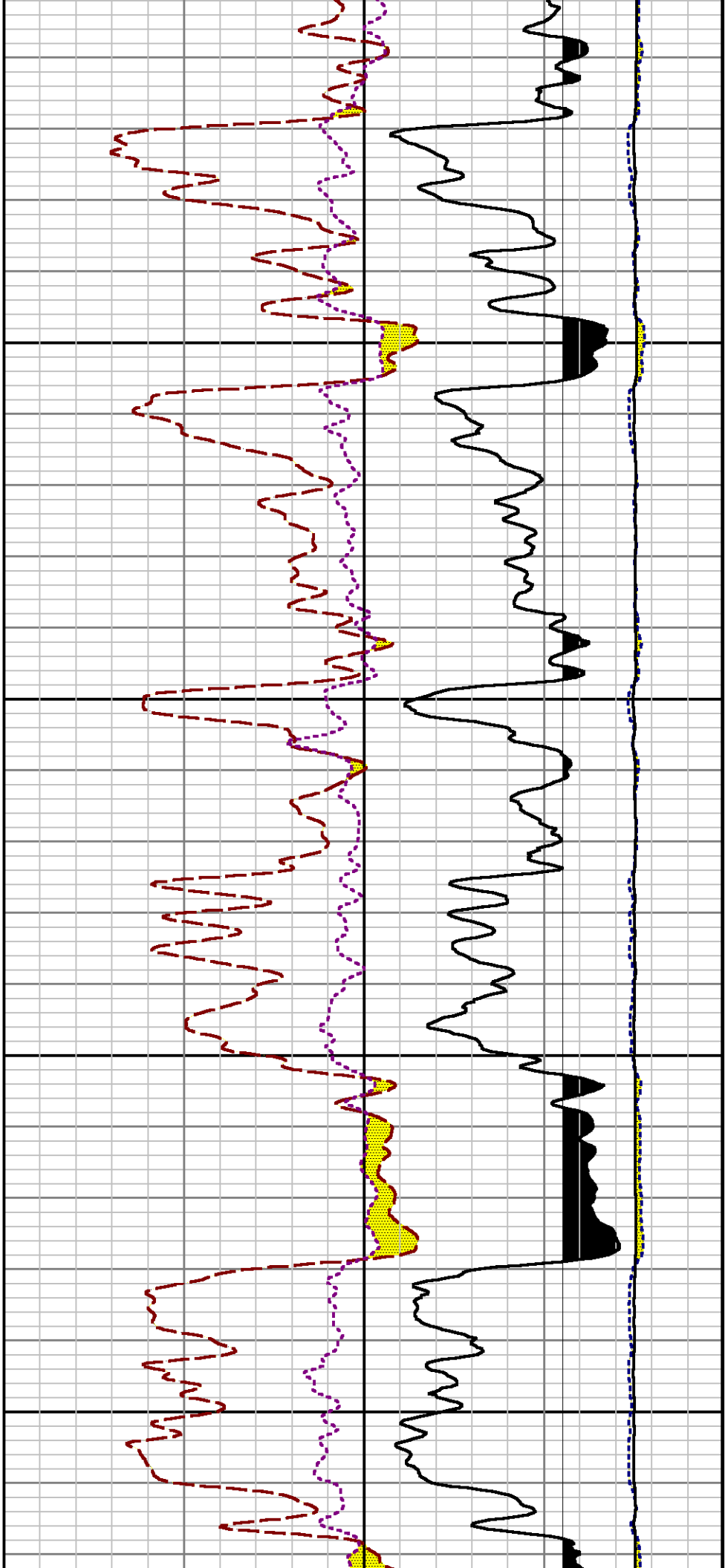


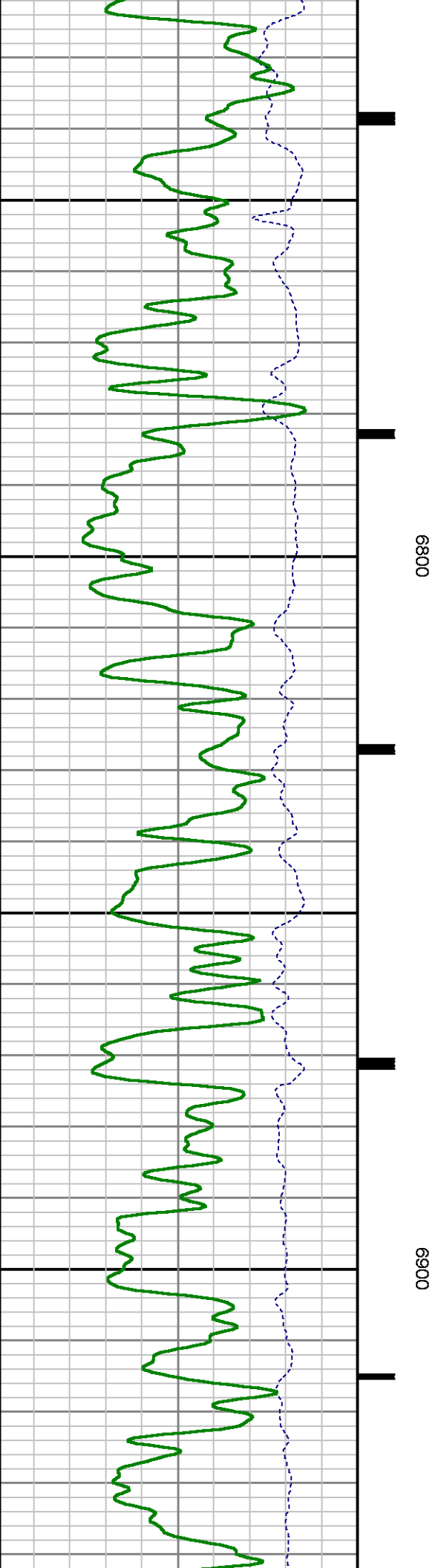
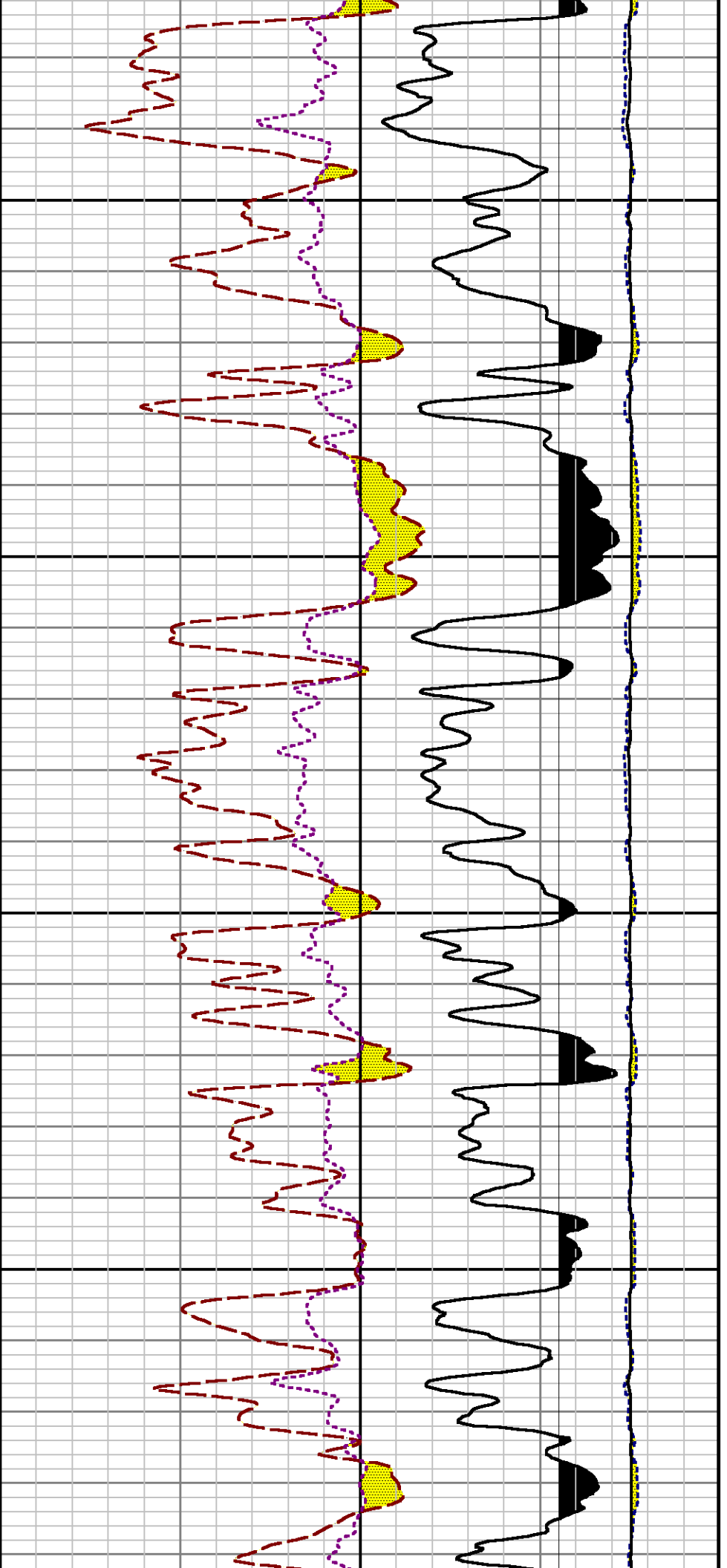
6100

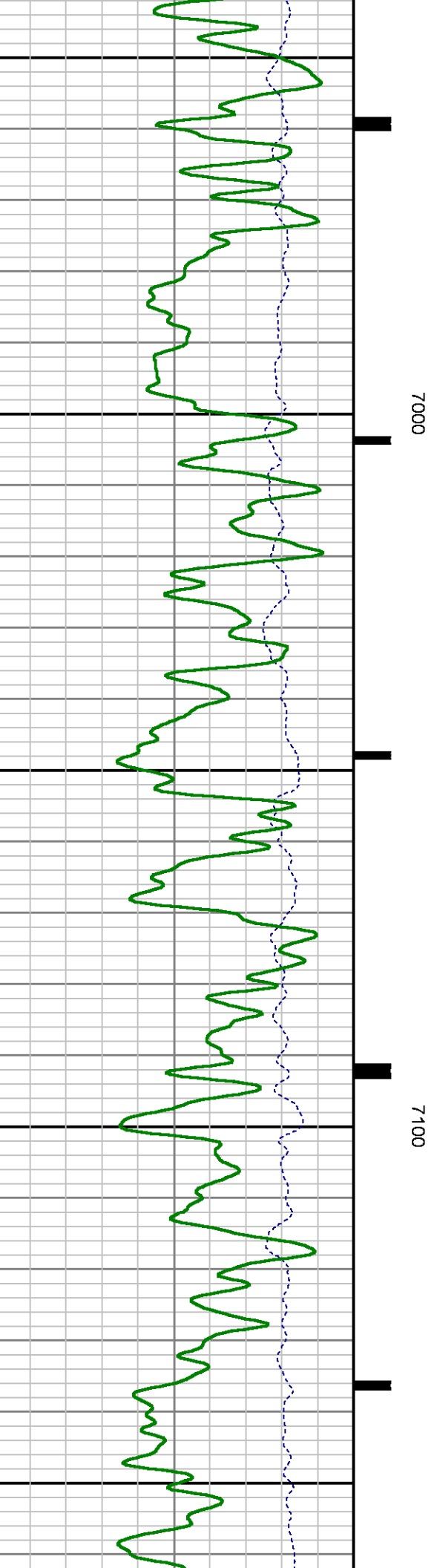
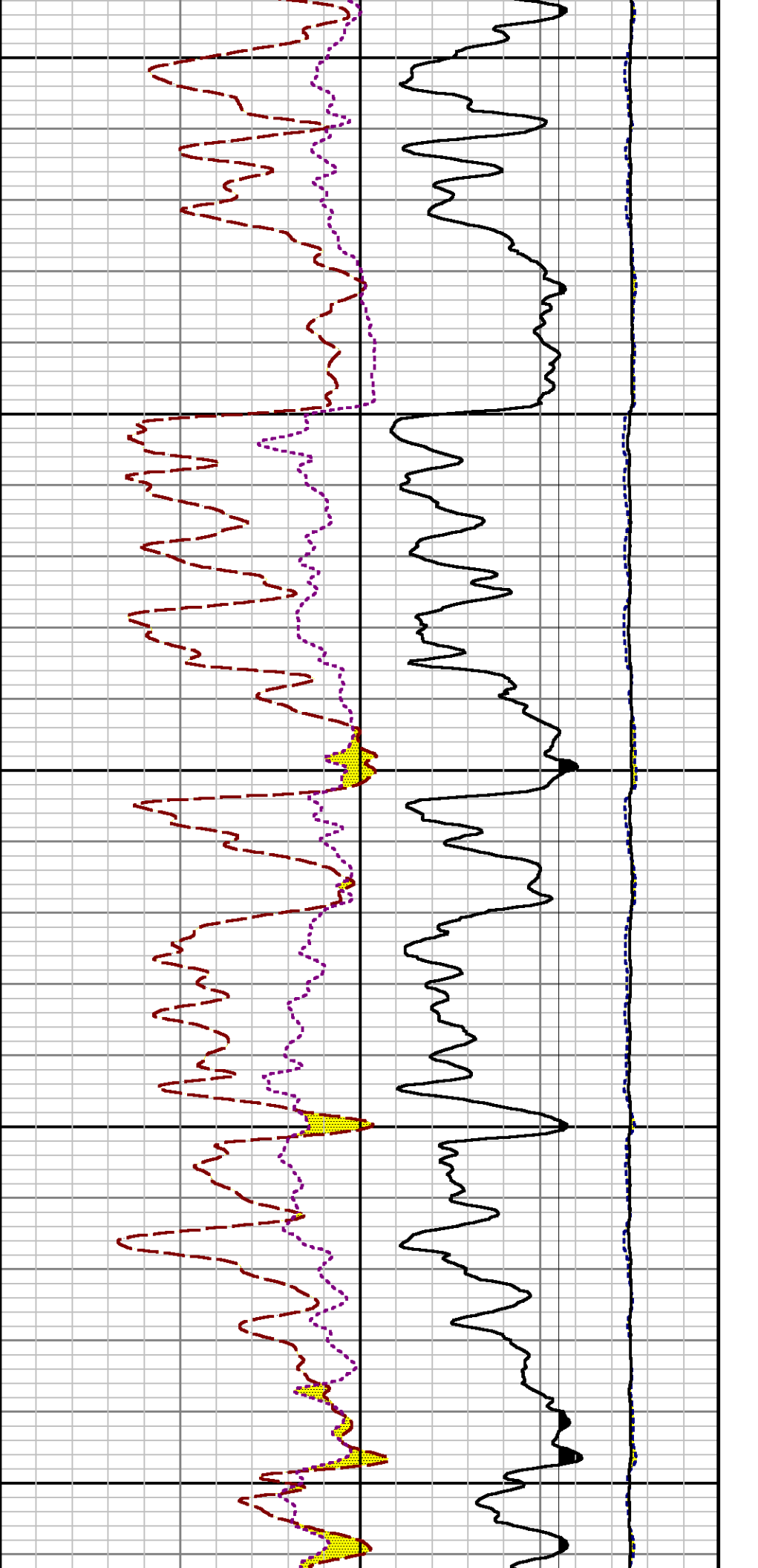
6200

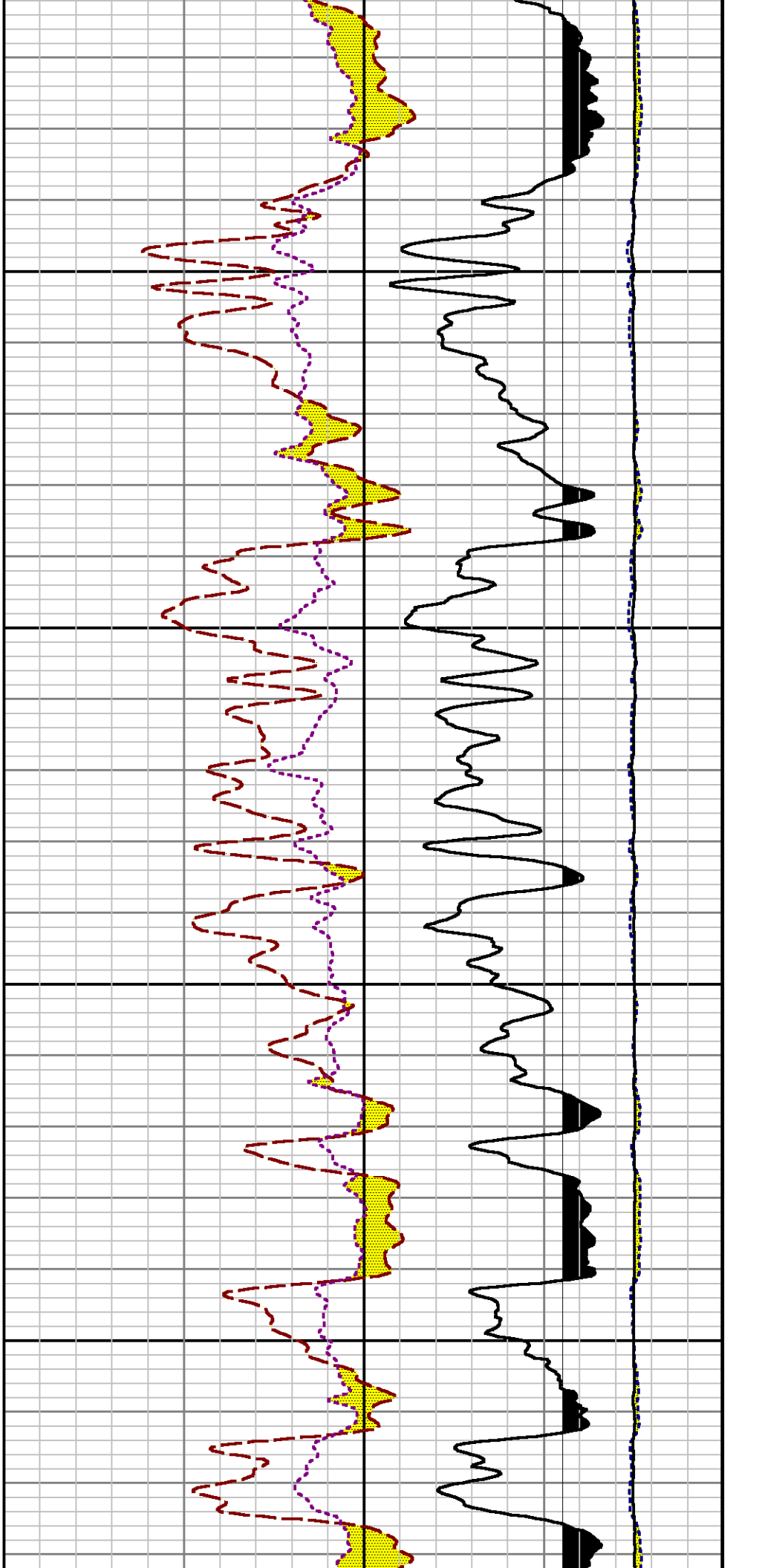






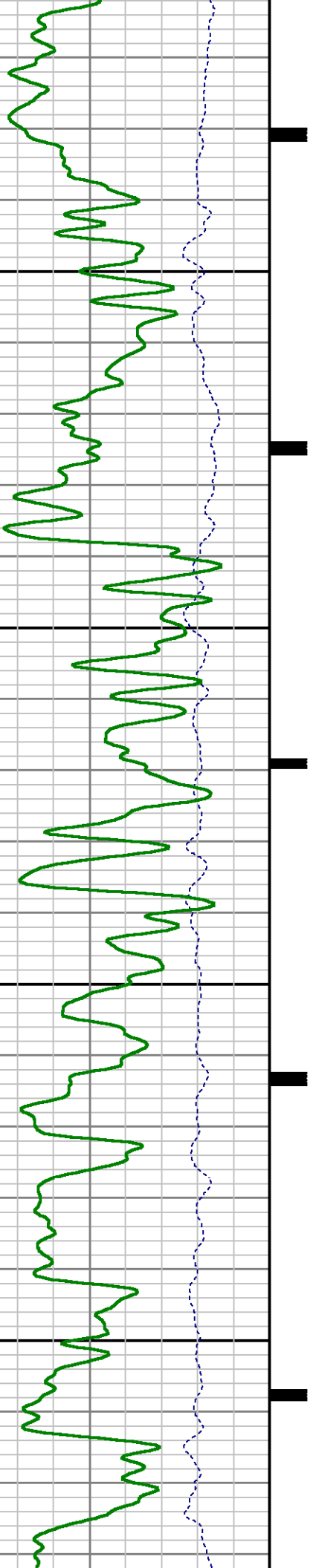


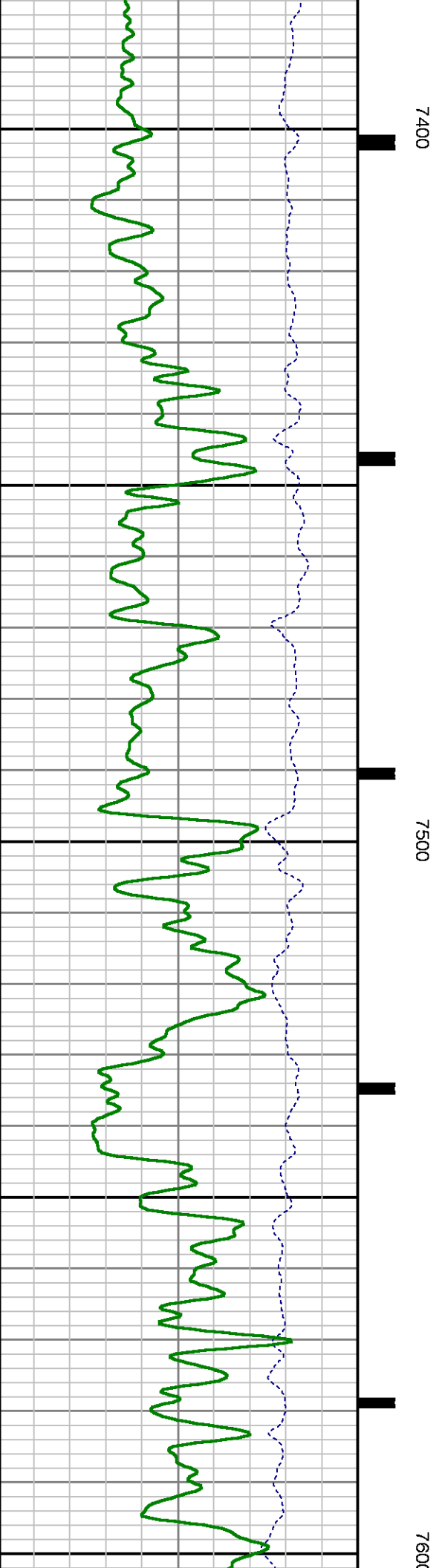
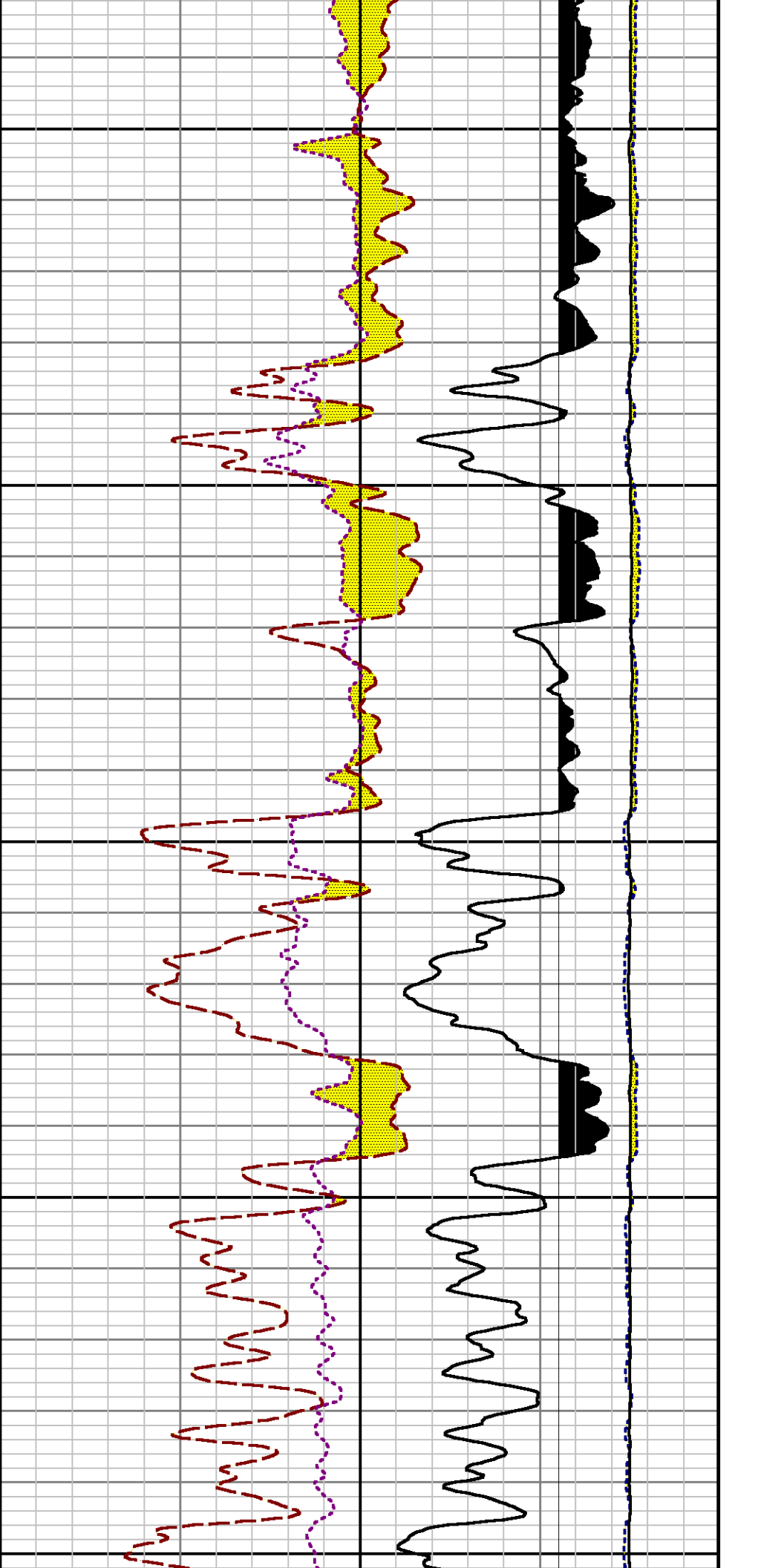


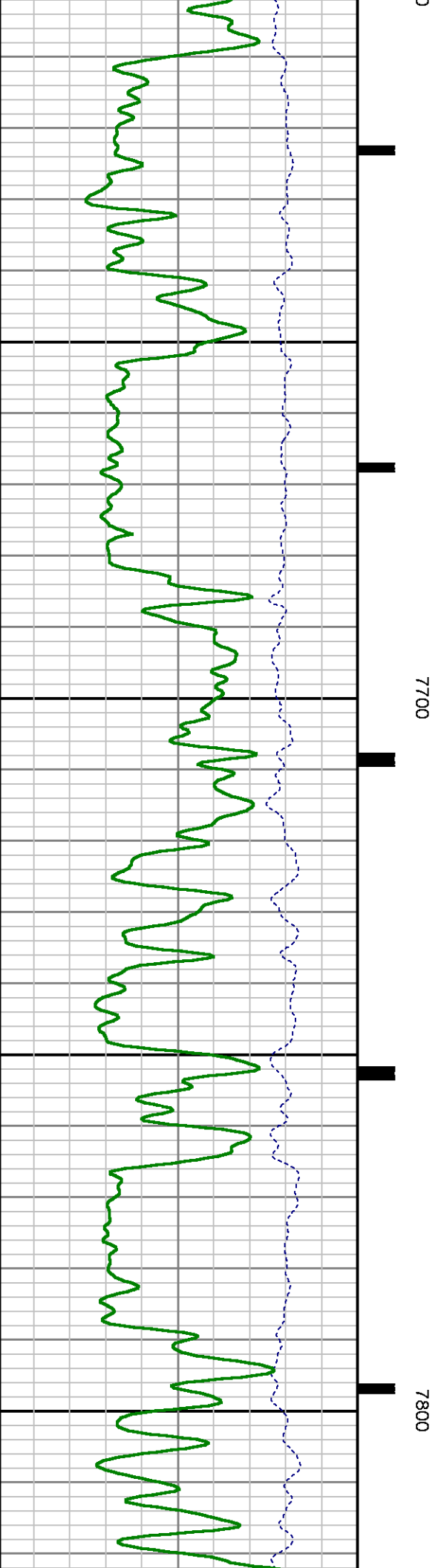
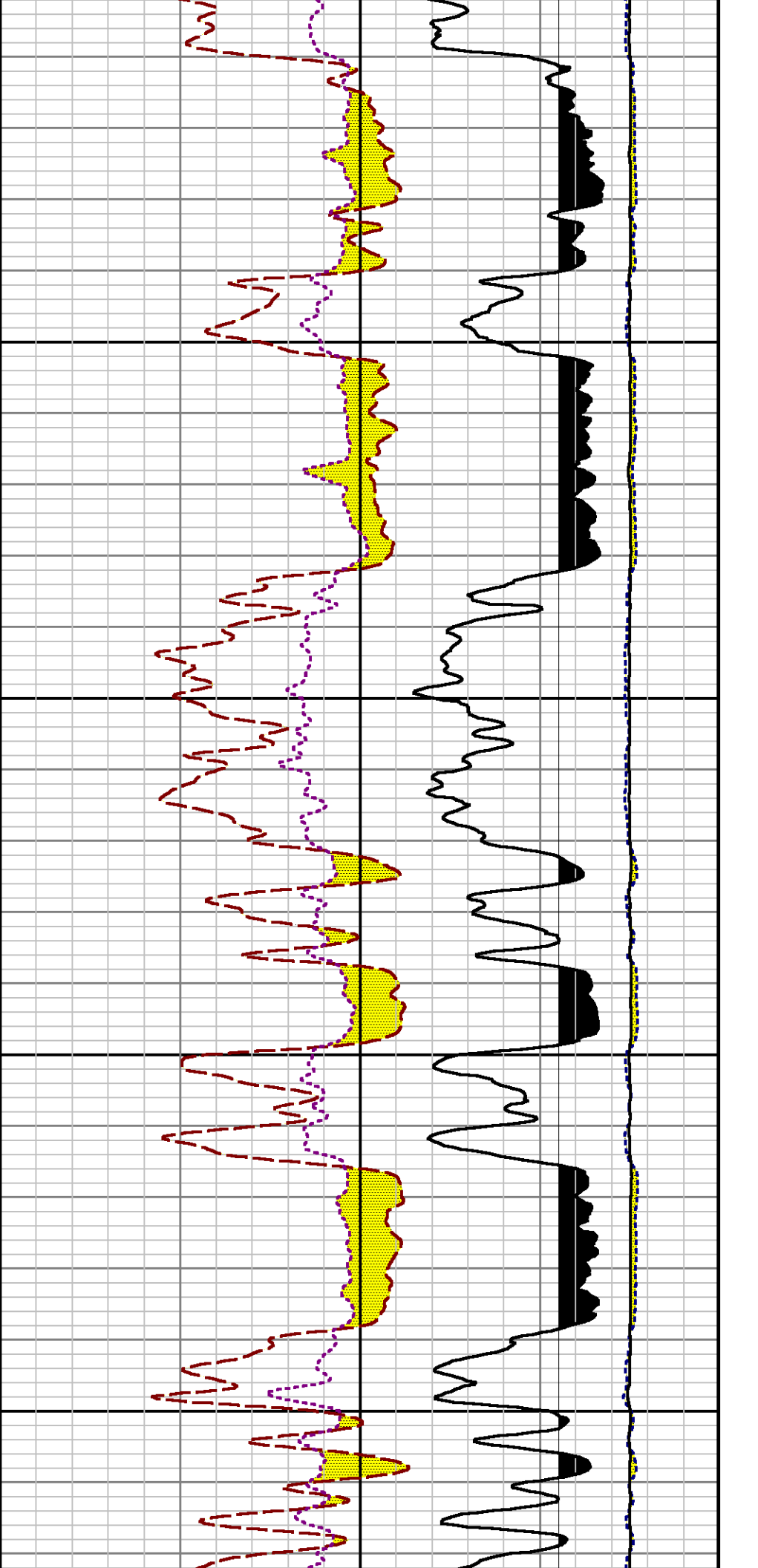


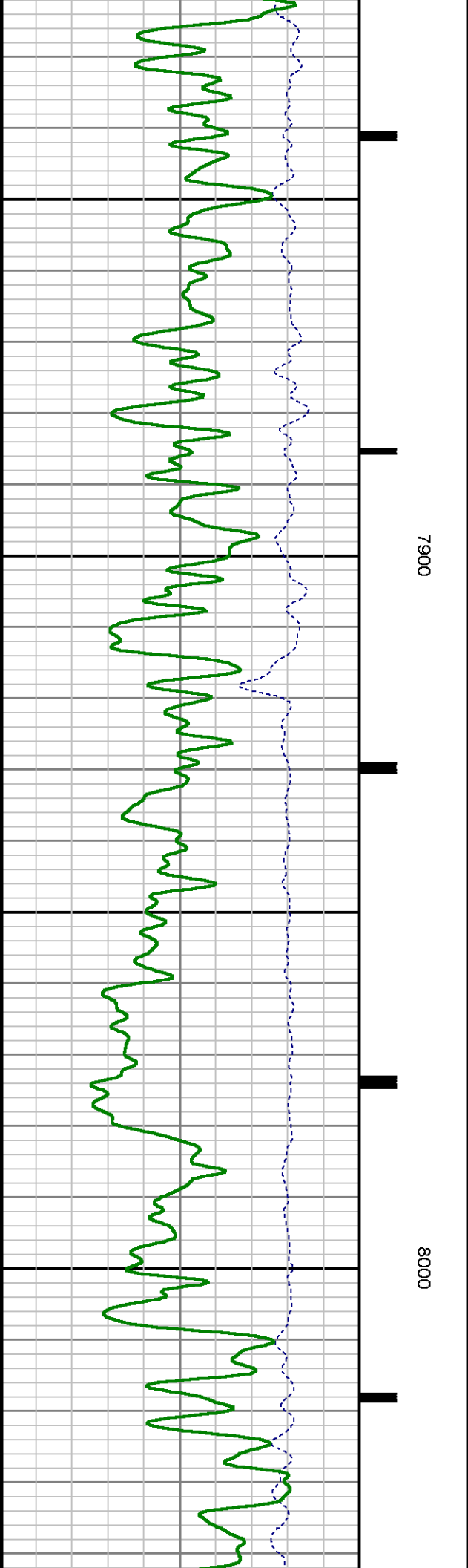
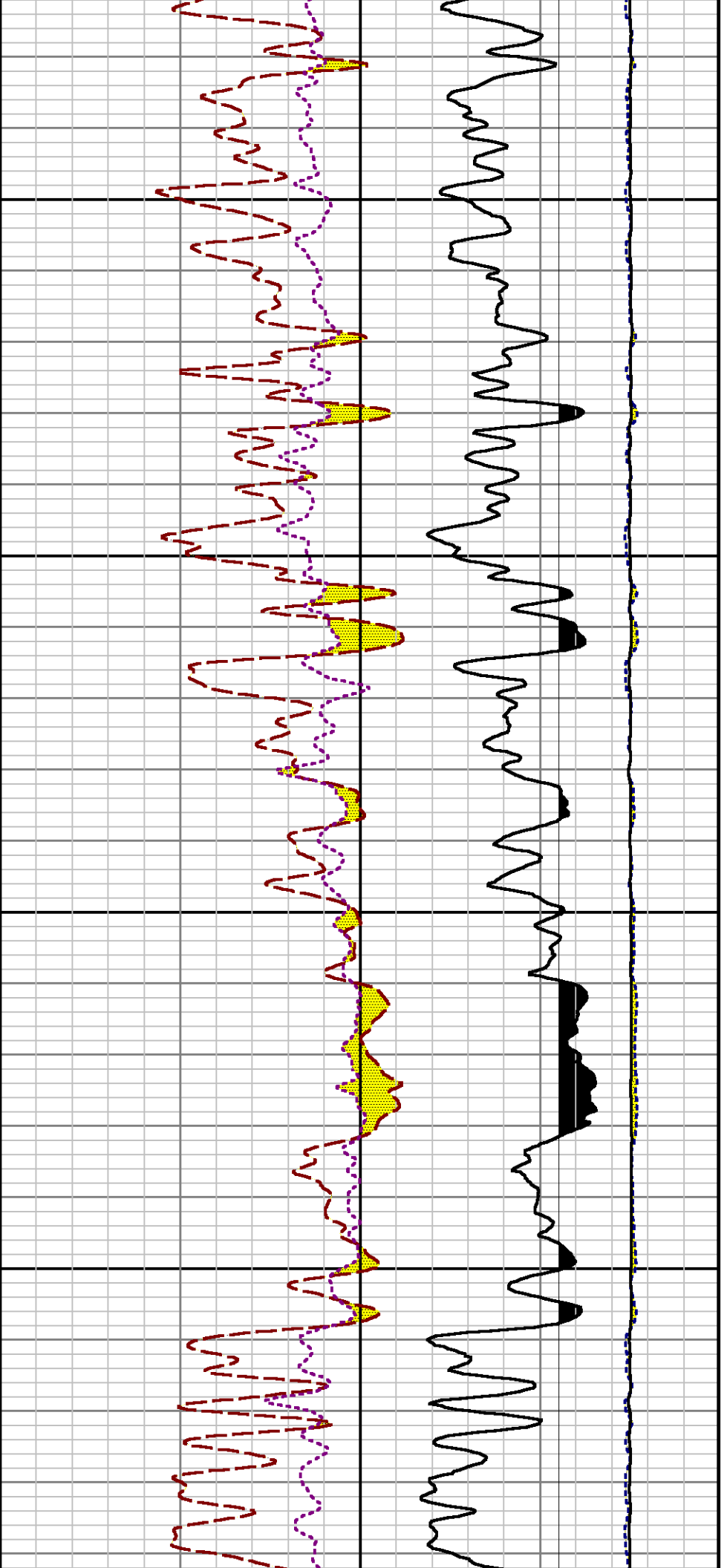
7200

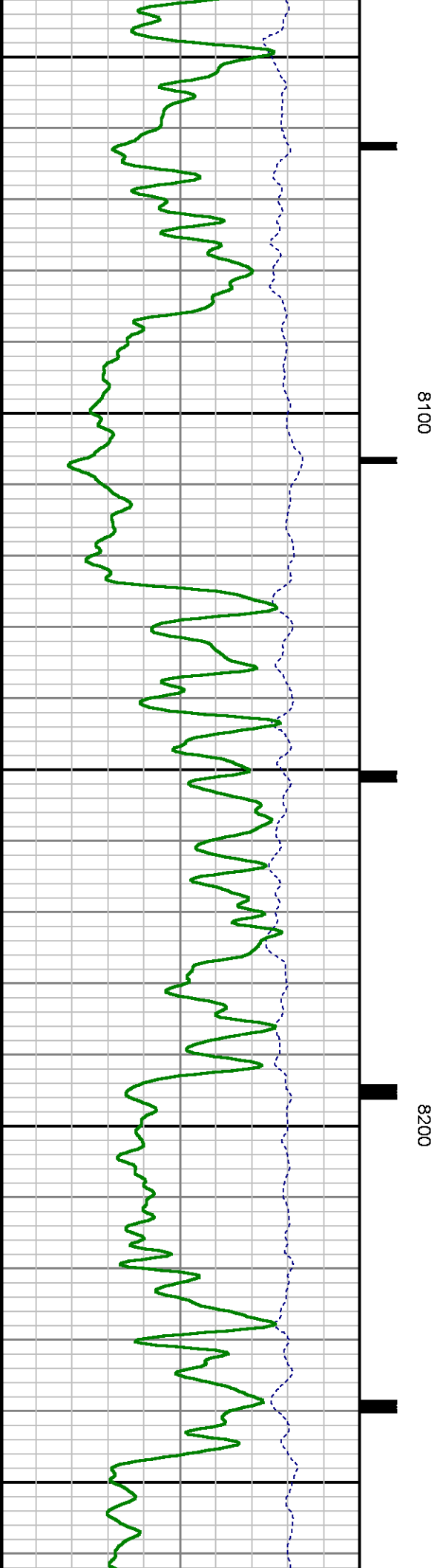
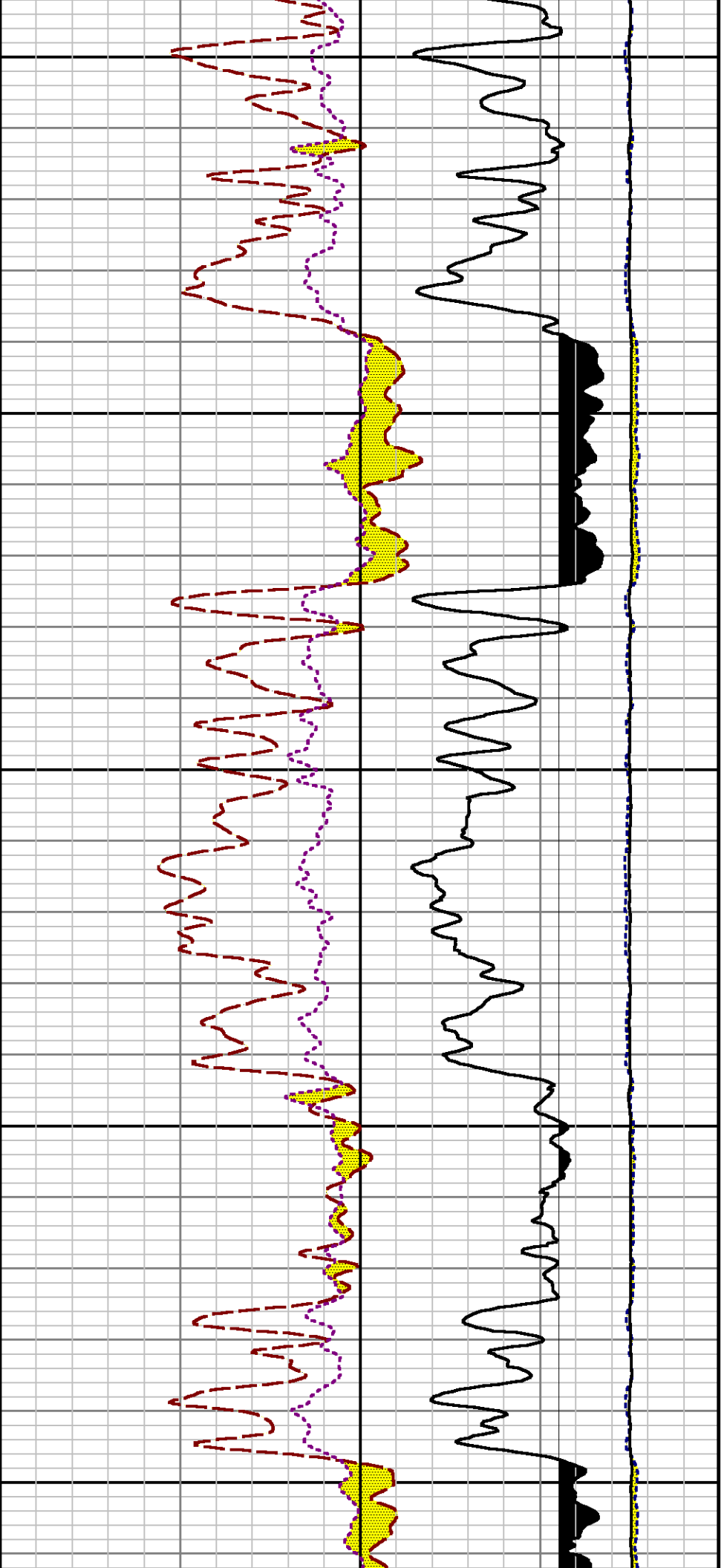
7300

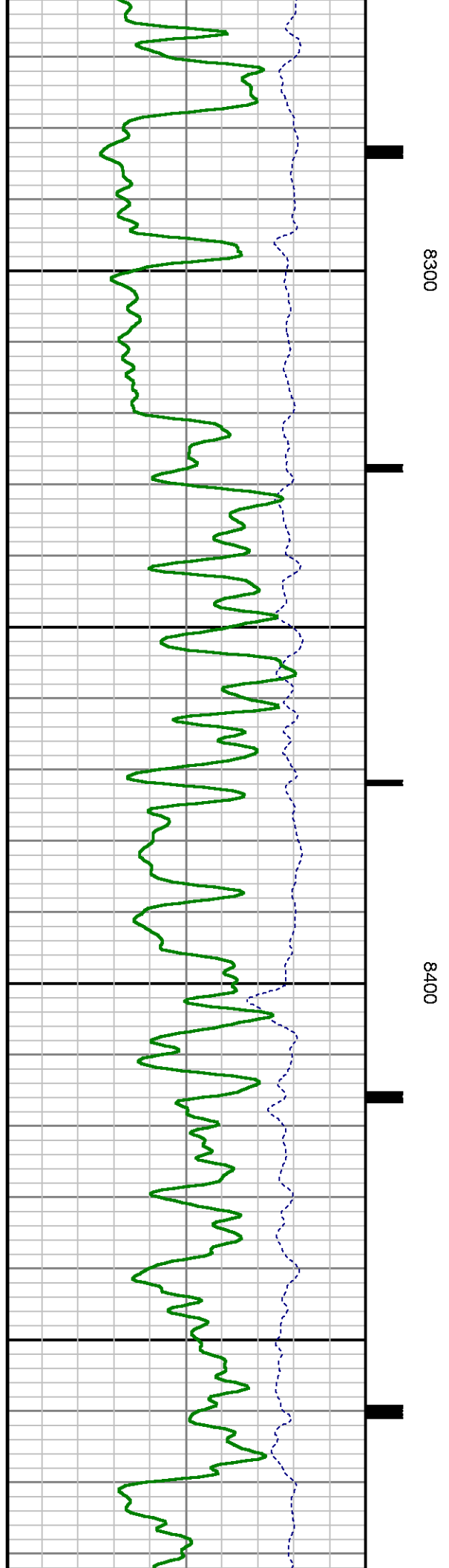
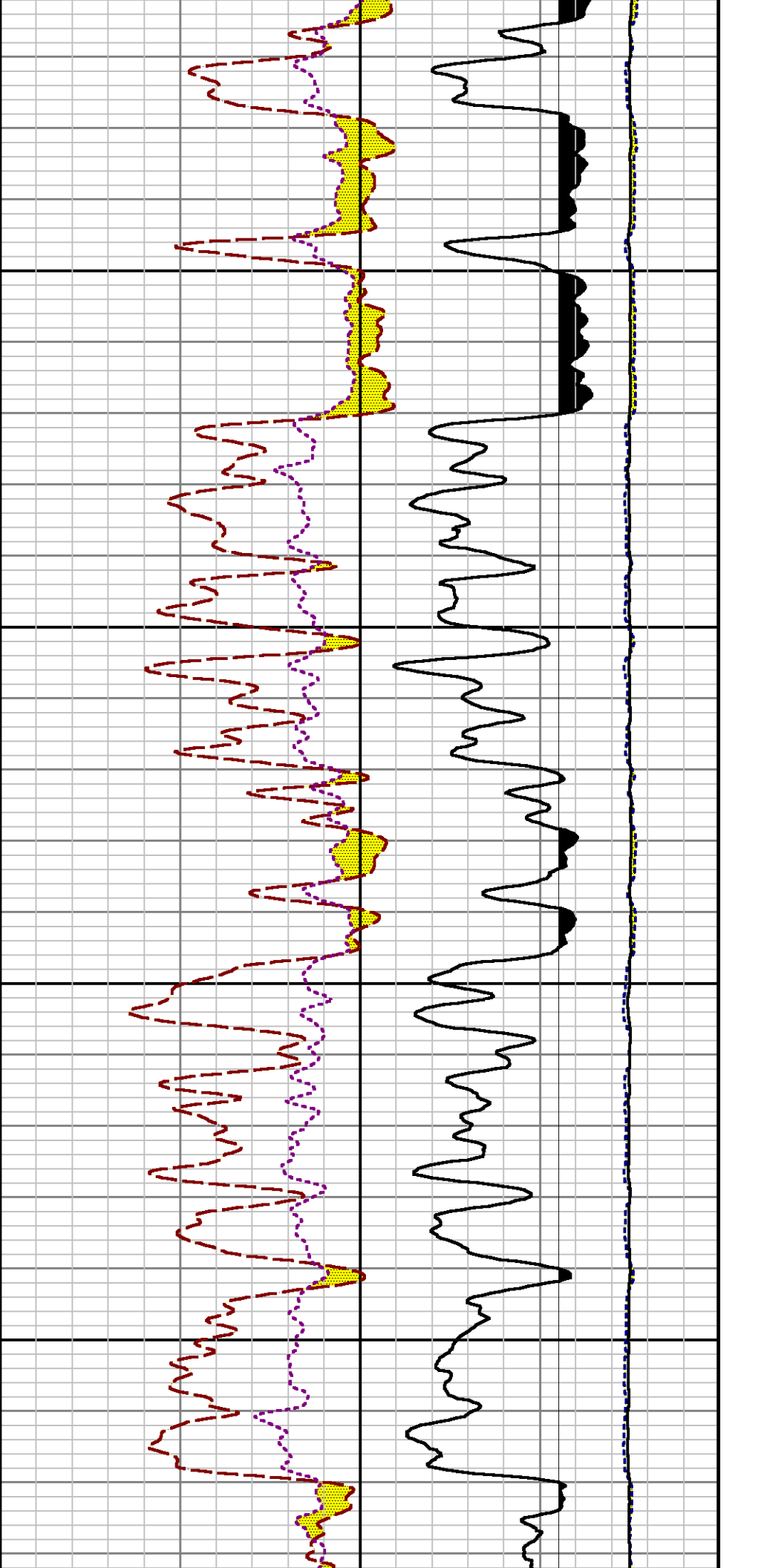


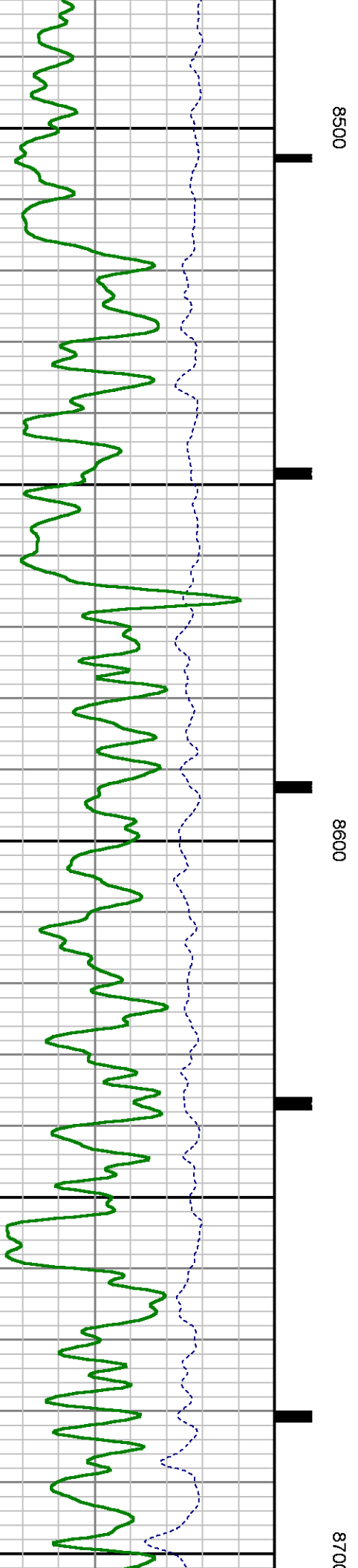
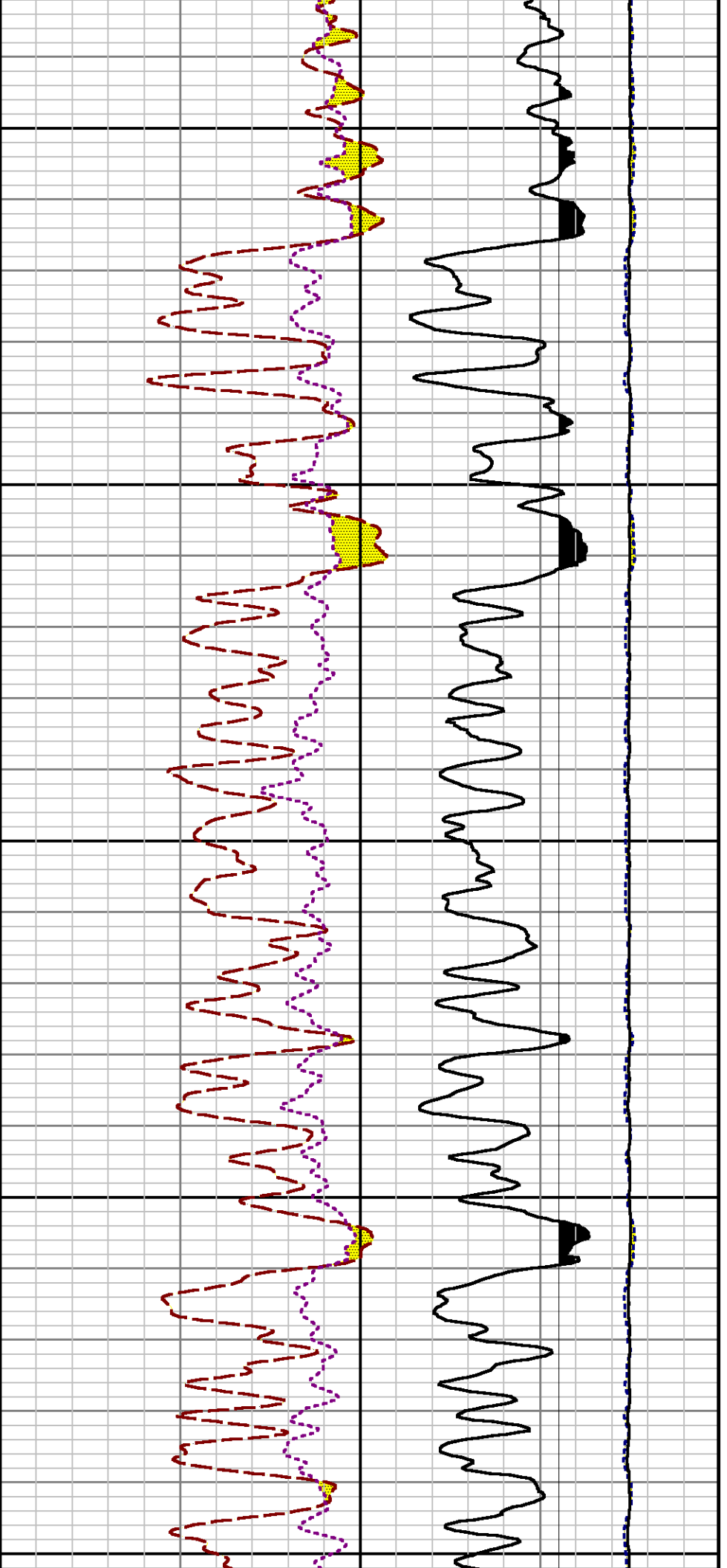


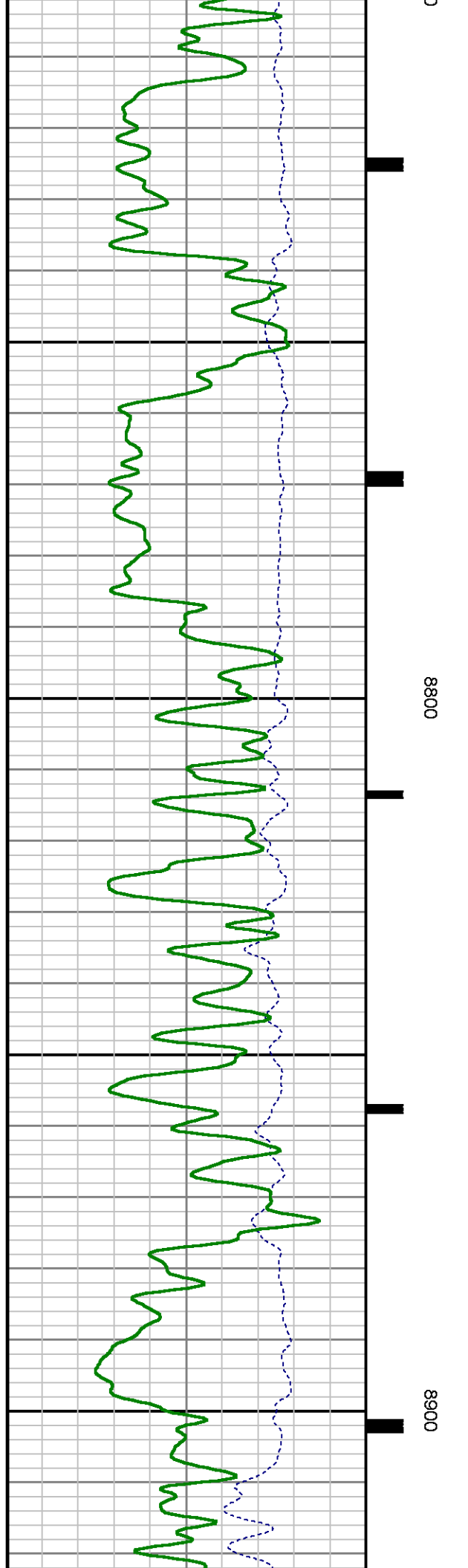
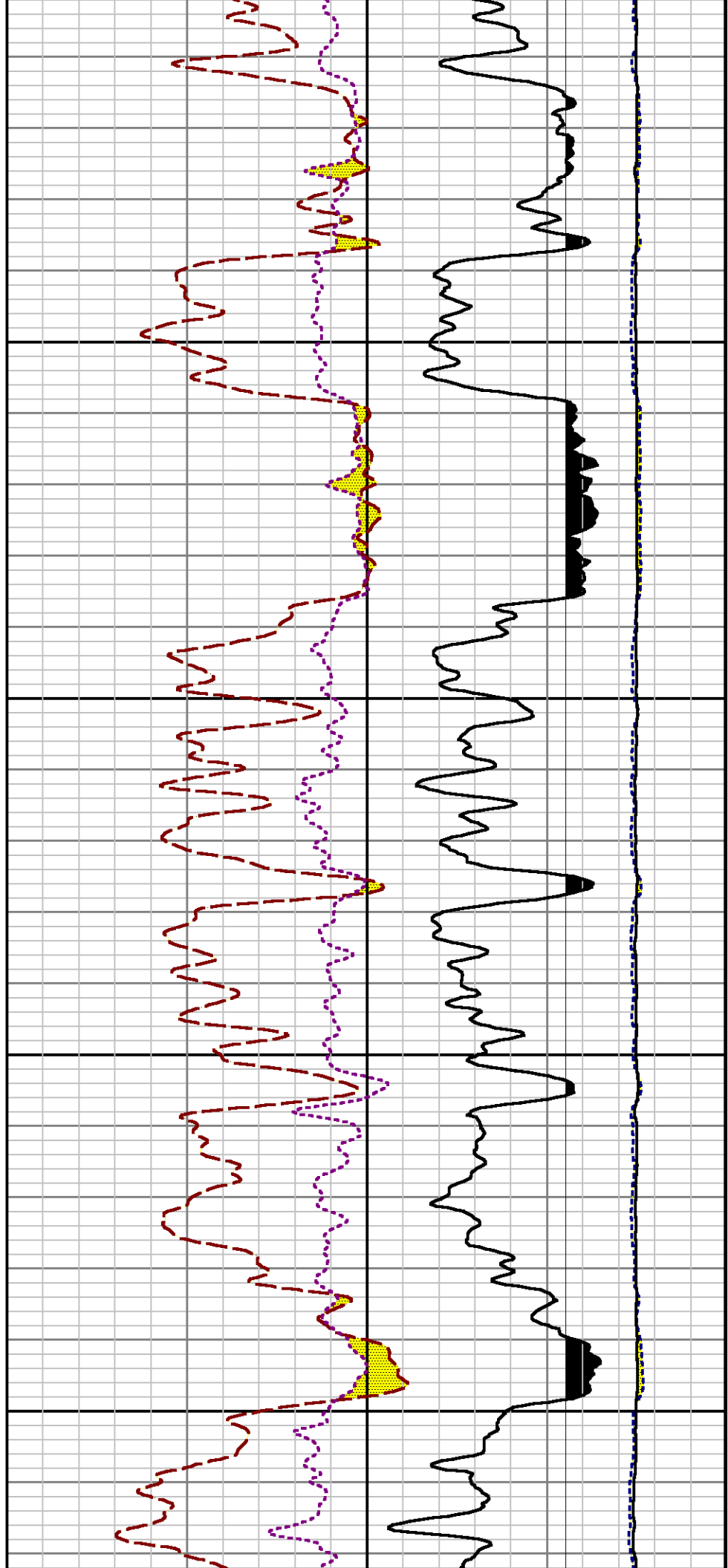


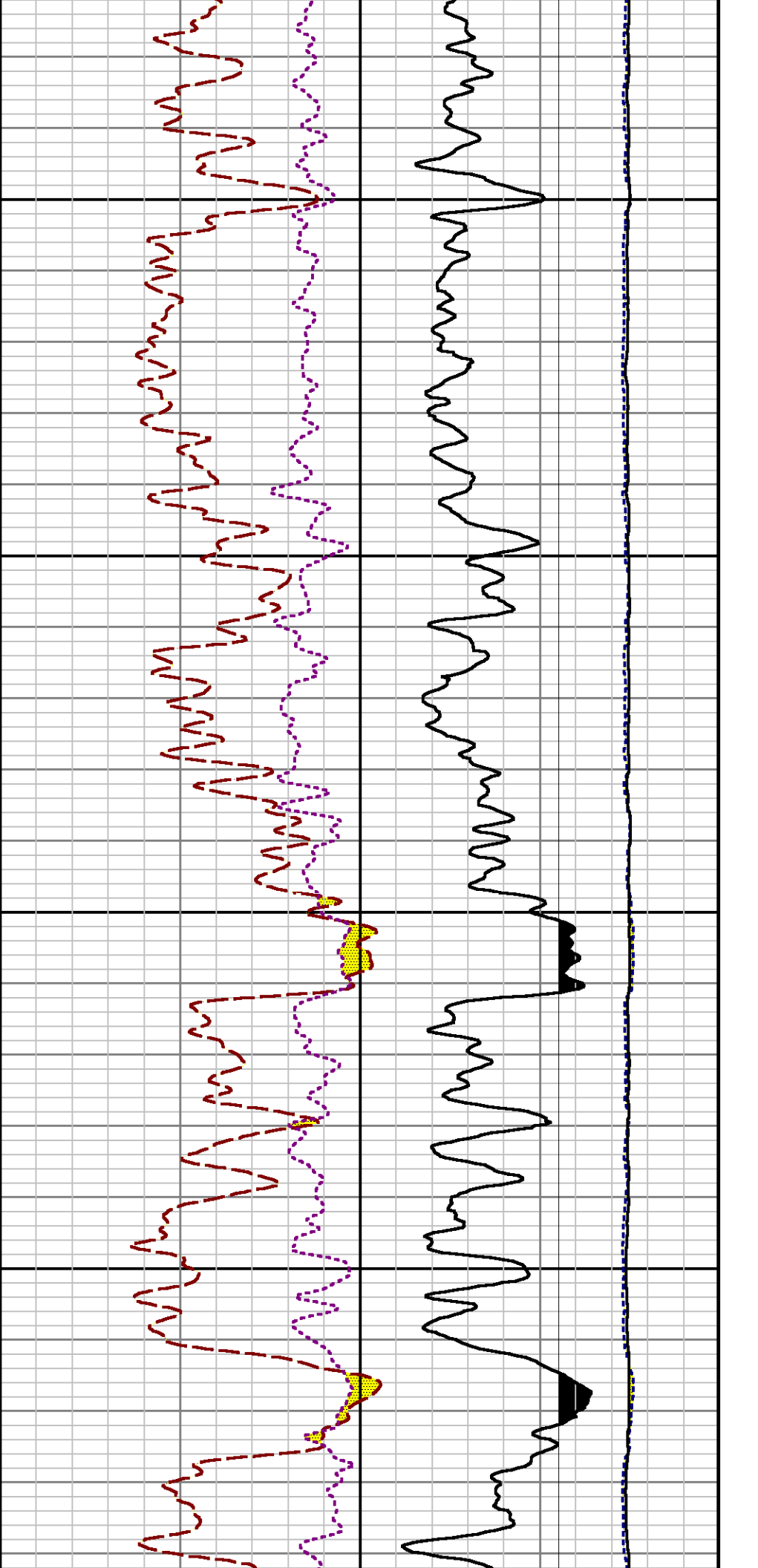






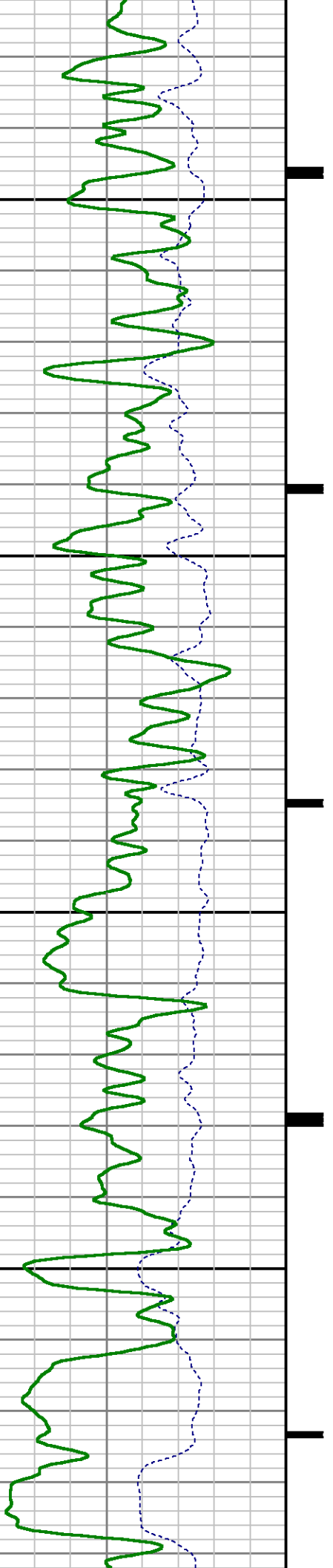


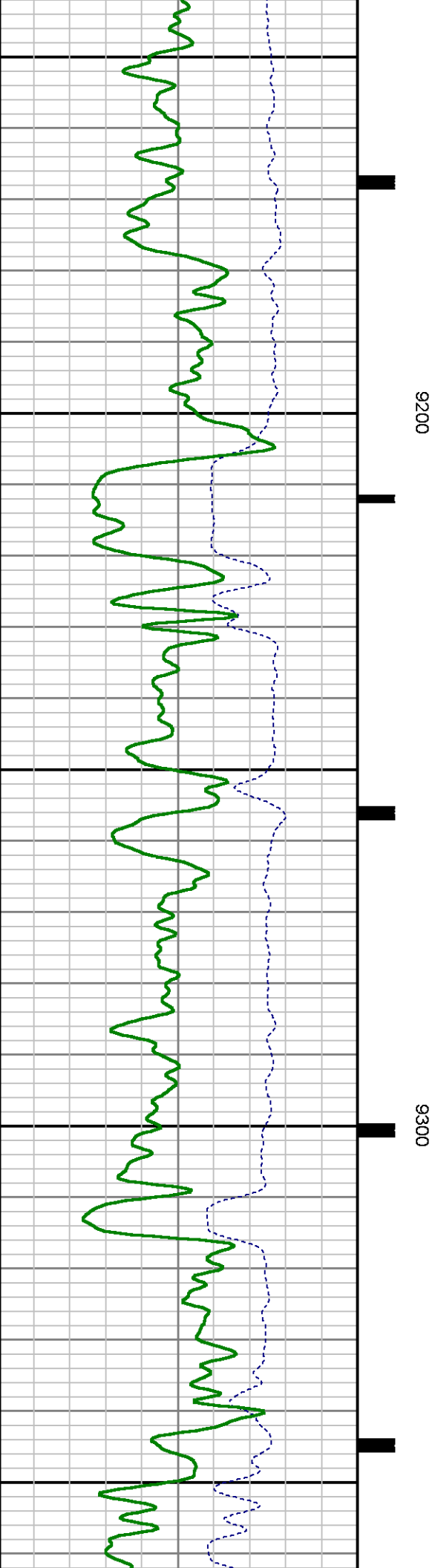
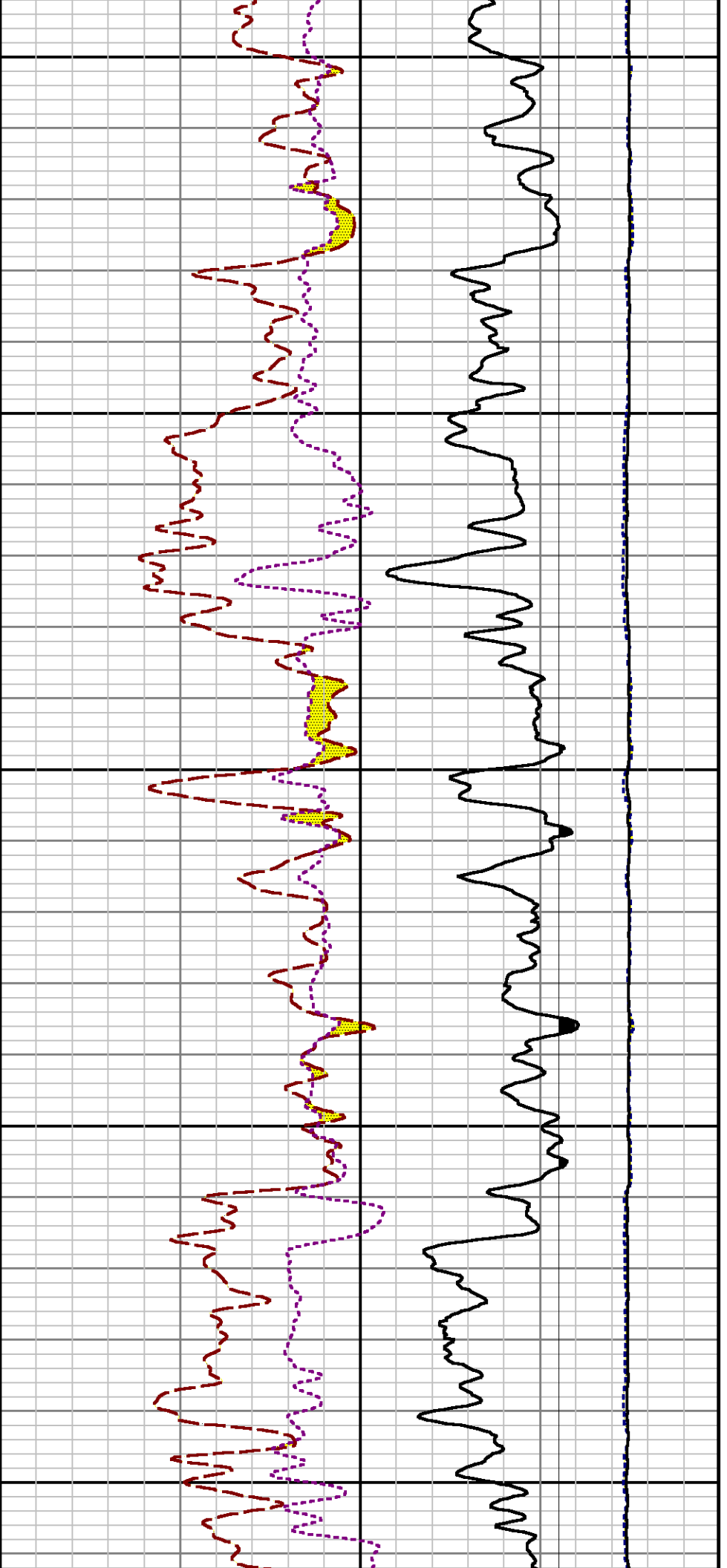


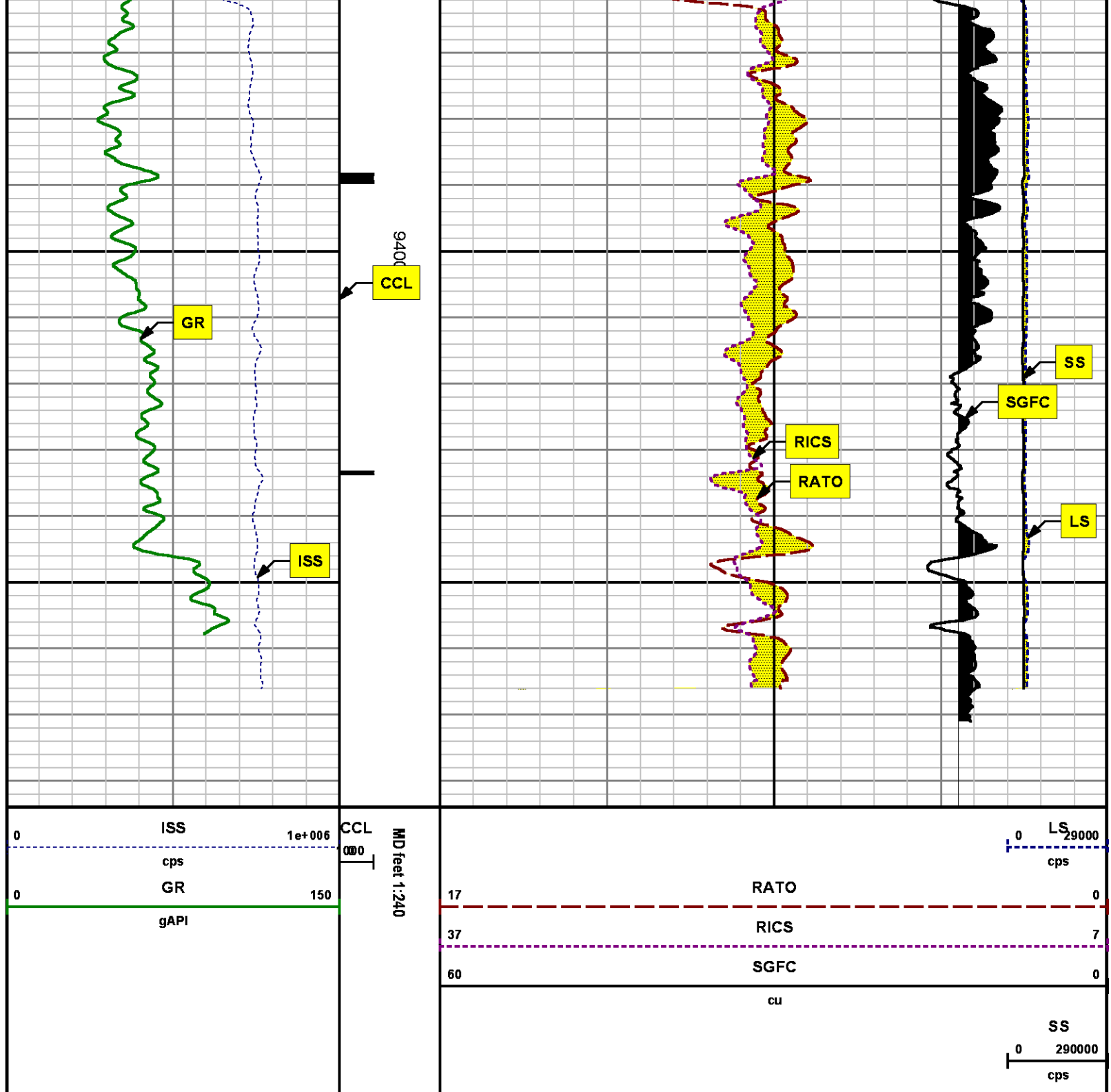


9000

9100







REPEAT SECTION
PNC 3-D MODE

SPL PROCESSING

MEASUREMENT TYPE	PARAMETER	VALUE	UNITS	TOP	BOTTOM
PNC Porosity	Borehole	Cased		9166.650	9484.150
PNC Porosity	Borehole Size	8.750	inch	9166.650	9484.150
PNC Porosity	Casing Size	4.500	inch	9166.650	9484.150
PNC Porosity	Gas Filled	Non Gas Filled		9166.650	9484.150
PNC Porosity	Matrix	Sandstone		9166.650	9484.150
TPS Pressure	Temperature Corr. Source	Fixed (72.00)	degF	9166.650	9484.150

DEPTH OFFSETS

(for Acquired Curves)

SERIES	DEPTH OFFSET	ACQUIRED CURVES
8248ED	-26.519	FLTM
8248ED	-24.519	CCL CHV
2812LA	-21.969	GR
8281XA	-12.702	HVC3Q0 SEQ3 AMA3 AML3 BKX CXS CPT3Q0 CPT3Q2 CPT3Q3 CPT3Q4 ET3 IXS MCS3 MCS3Q0 QCAL3 RGN3 RICX SDA3 SDL3 SGA3 SGL3 STA3 XS ASPEC3 AMB3 AMF3 CHF3 IXSC IXSN RATO23 RICXC RIN13C RIN23 RIN23C SD3D SG3D SGB3 SGF3 WDT3 CXSR IXSR XSR RICXR
8281XA	-12.291	HVC2Q0 SEQ2 AMA2 AMB2 AMF2 AML2 BKL CHF2 CLS CPT2Q0 CPT2Q2 CPT2Q3 CPT2Q4 ET2 ILS LS MCS2 MCS2Q0 QCAL2 RGN2 RICL RONE23 RTWO23 SDA2 SDL2 SGA2 SGB2 SGF2 SGK2 SGL2 STA2 ASPEC2 ILSC ILSN WDT2 RICLC CLSR ILSR LSR RICLR
8281XA	-12.041	CPRS HVC1Q0 MV SEQ SEQ1 AMA1 AMB1 AME1 AMF1 AML1 BKS CHF1 CSS CORB CORF CPT1Q0 CPT1Q2 CPT1Q2A CPT1Q2B CPT1Q2C CPT1Q3 CPT1Q4 CPT1Q5 ET1 G1 G2 GE1S GE2S ISS MCS1 MCS1Q0 QA1 QCAL1 QM1 RATO RATO13 RBOR RGN1 RICS RIN RONE RPOR RTWO RIN13 RONE13 RTWO13 SALB SC1 SDA1 SDL1 SGA1 SGB1 SGBC SGE1 SGF1 SGFC SGK1 SGL1 SS SS2 STA1 PD1S PD2S PD3S MD1S MD2S MD3S DG1S DG2S DG3S PD1M PD2M PD3M MD1M MD2M MD3M DG1M DG2M DG3M MVS MA MVM FILV IAM TA PVM PVS IAS SSTAT QPD1 QPD2 QPD3 QMD1 QMD2 QMD3 QDG1

QDG2	QDG3	QMA	QTA	QFILV	QMV
QPV	QIA	DERR	DCNT	QPK1	QSA1
PKS1	ASPEC1	H0C	FE2XC	ISSC	RINC
ISSN	RDEN	WDTH1	RICSC	CSSR	G1R
G2R	ISSR	SSR	SS2R	RATOR	RATO13R
RBORR	RICSR	RINR	RIN13R	RONER	RPORR
RTWOR					
PTFS	PTMS				
SPF1	SPFQ	TSCP	TSDP		
DTEM	TEMP	TNF			
TEN	TTEN				

8255XA	-0.792
8255XA	-0.775
8255XA	0.000
SYSTEM	0.000

Created by : RPM9, v5.3.1.0

Plotted by : PlotMgr, v5.4.504

Company : WPX ENERGY

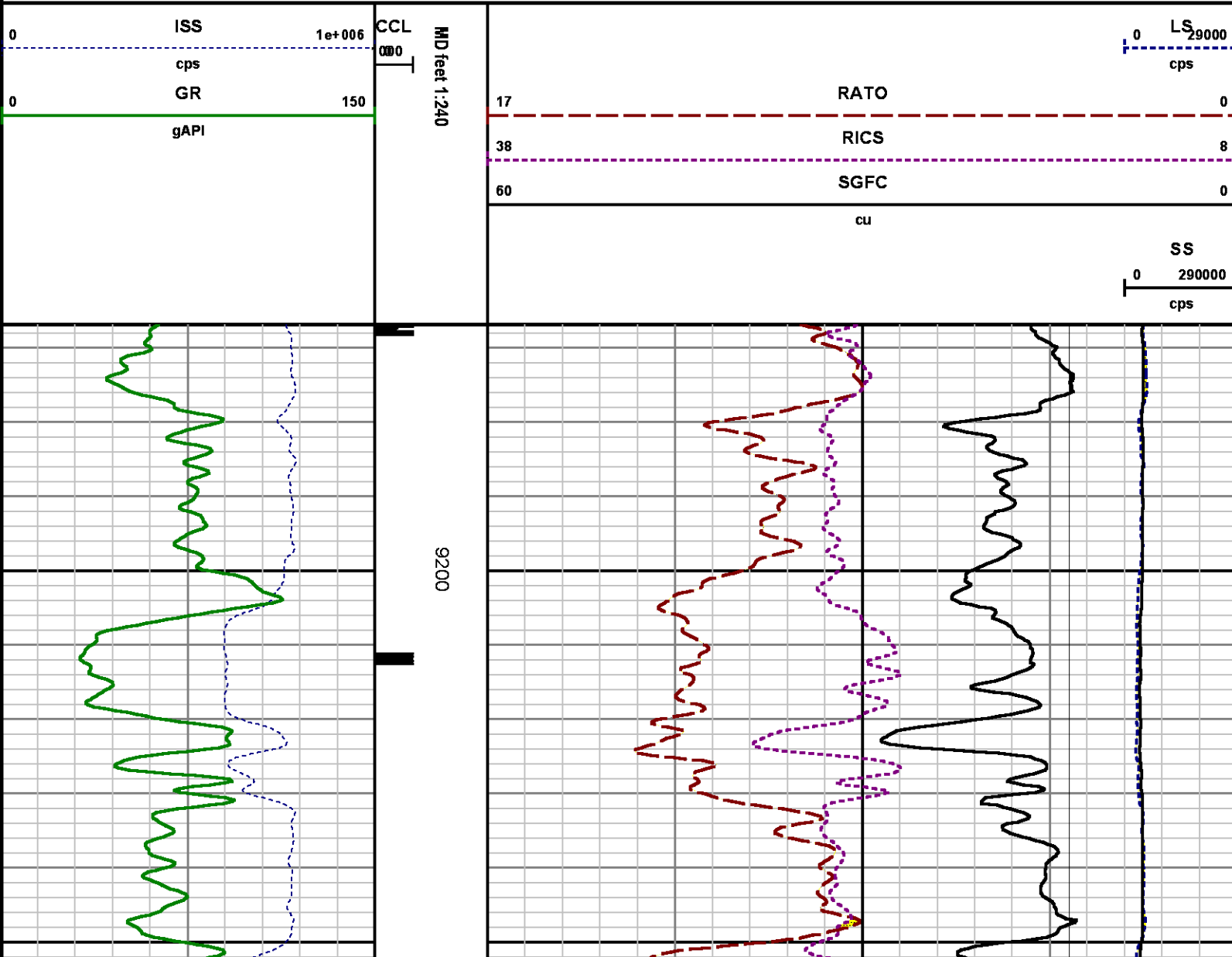
Well : AP 424-17-695

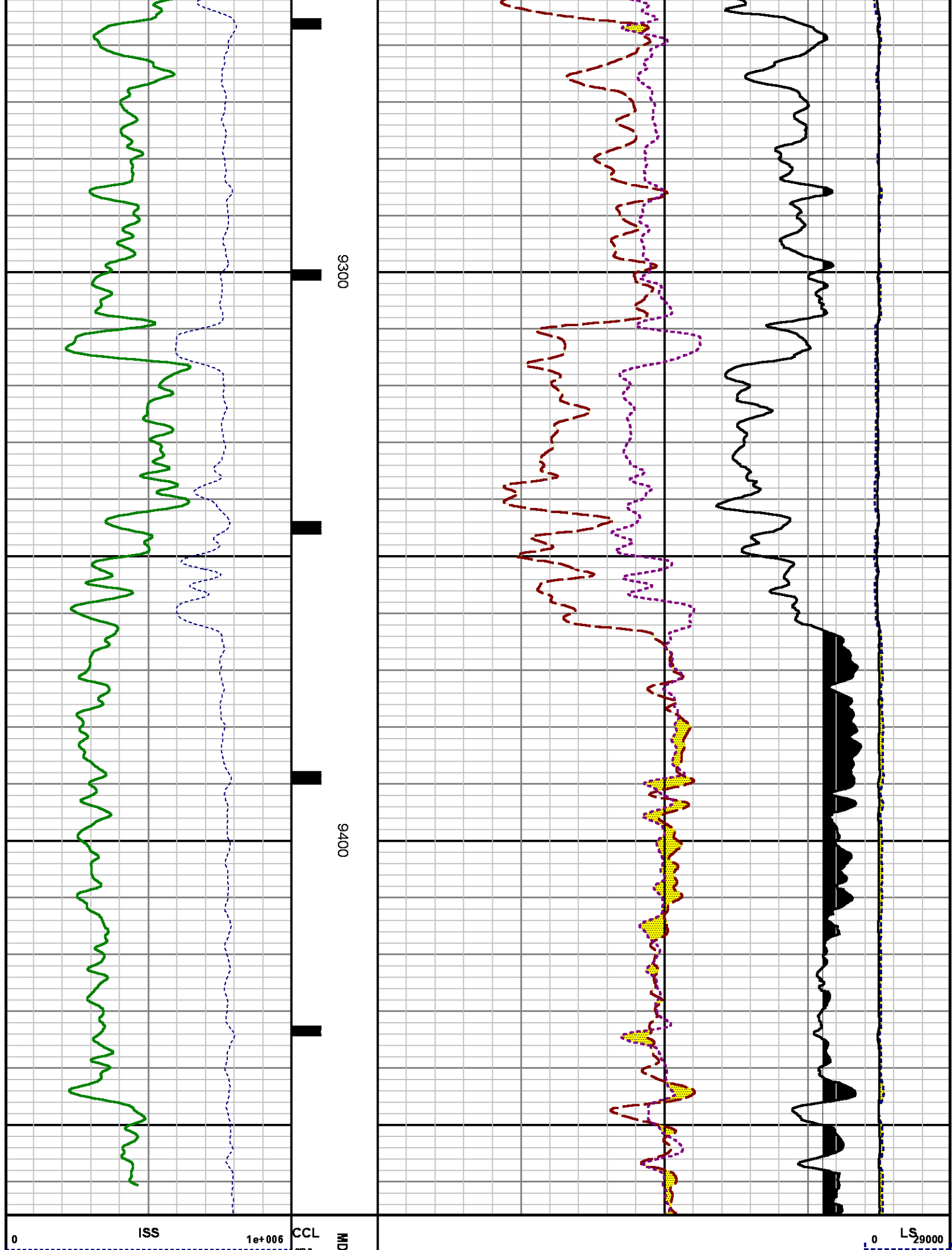
File Name : d:\well\data\wpx\ap 424-17-695\rpm424\repeat.xtf

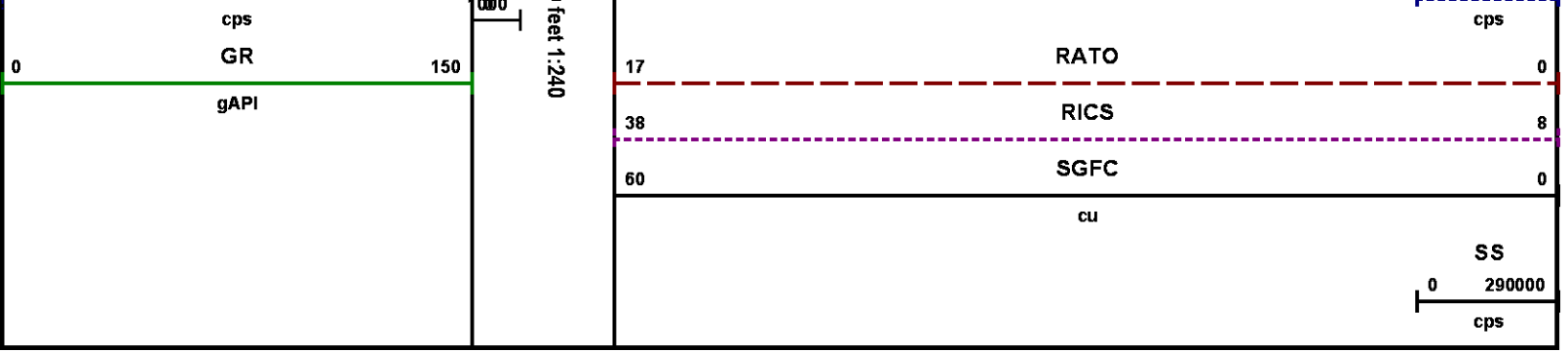
Mode : PlotMgr 5.4.504

Interval : 9166.90 - 9466.00 feet UP

Created : 10/11/2014 9:24:49 PM







CALIBRATION SUMMARY

GAMMA RAY

Calibration File: C:\case\calver\GR\382O1.cal

CALIBRATION SUMMARY						
DATE/TIME PERFORMED:		Fri Oct 10 20:18:37 2014		TOOL SERIES:	2812LA	ASSET: 382 SEQ: O1
Calibrator #	Background [cps]	Calibrator On [cps]	Multiplicative	Background [api]	Calibrator On [api]	Differential [api]
S2K WA612	67.31	273.64	1.018	68.51	278.51	210.00

Verification File: C:\case\calver\GR\382O1.VP

PRIMARY VERIFICATION						
DATE/TIME PERFORMED:		Fri Oct 10 20:21:02 2014		TOOL SERIES:	2812LA	ASSET: 382 SEQ: O1
Calibrator #	Background [cps]	Calibrator On [cps]	Multiplicative	Background [api]	Calibrator On [api]	Differential [api]
S2K WA612	64.02	275.47	1.018	65.16	280.36	215.20

PNC

Calibration File: C:\case\calver\PNC\25117.cal

PNC 3D CALIBRATION SUMMARY						
DATE/TIME PERFORMED:		Wed Sep 17 13:32:09 2014		TOOL SERIES:	8281XA	ASSET: 251 SEQ: 17
Calibrator #			Source #			
2437XB 112674			8281AA 10220684			

	ISS	Mtr Vits (V)	SS Gain	LS Gain	XLS Gain	EA Temp (degF)	Sync Delay (usec)	RCAL
Raw Data	816811	123.00	2297.00	2292.00	2306.00	108.96	7.00	0.9925
Interpolated	1300000	142.22	2278.61	2286.35	2301.44			

	ISS	BKS	BKL	BKX	SGA1	SDA1	SGA2	SDA2
Raw Data	816811	7824.32	1325.50	169.22	25.76	0.14	24.27	0.28
					25.35 26.40	0.00 0.20	23.60 24.80	0.00 0.40

	ISS	ILS	IXS	SS	SS2	LS	CSS	CLS
Raw Data	816811	169831.69	26829.93	88232.01	31440.33	8315.89	53438.83	13288.97
Fit Quality %		0.64	0.57	0.66	0.62	0.64	0.62	0.67

	ISS	RBOR	RIN ISS/ILS	RIN13 ISS/IXS	RICS ISS/CSS	RATO SS/LS	RTWO SS2/LS	RONE CSS/CLS
Raw Data	816811	1.43	4.81	30.45	15.28	10.61	3.78	4.02
		1.42 1.45	3.55 5.52	22.20 32.70	10.99 16.34	10.06 11.10	3.57 3.95	3.76 4.22
Fit Quality %		0.05	0.09	0.07	0.08	0.03	0.02	0.05
Reduced	1370106	1.43	4.83	30.56	15.35	10.60	3.78	4.02
		1.42 1.45	4.33 5.52	27.60 32.70	13.70 16.34	10.06 11.10	3.57 3.95	3.76 4.22

TEMPERATURE

Calibration File: C:\case\calver\TEMP\120516AU.cal

CALIBRATION SUMMARY

DATE/TIME PERFORMED: 09 AUG 2010 TOOL SERIES: 8255XA ASSET: 120516 SEQ: AU

	T(0)	T(1)	T(2)	T(3)	T(4)	T(5)
Coefficients	-8.673169e+000	9.576065e-002	6.395448e-006	-9.461013e-010	0.000000e+000	0.000000e+000

TOOL DIAGRAM

33.24'

OTA SHORT CABLE HEAD**PCM POWER SUPPLY**

Series 8250EA
 Mnemonic PCM
 Diameter 1.70"
 Weight 18.00 lb
 Length 3.86'
 Temp Rating 350.00 °F

TELEMETRY / CCL

Series 8248EA
 Mnemonic PCM
 Diameter 1.70"
 Weight 20.00 lb
 Length 4.46'
 Measure Point 1.00' CCL MP
 Temp Rating 350.00 °F
 Press Rating 15000.00 PSI

SONDEX GAMMA RAY

Series 2812LA
 Mnemonic SNDX
 Diameter 1.69"

RESERVOIR PERFORMANCE MONITOR

Series 8281XA
 Mnemonic RPM
 Diameter 1.70"
 Weight 75.00 lb
 Length 18.58'
 Measure Point 9.49' SS DETECTOR
 Measure Point 9.72' LS DETECTOR
 Measure Point 12.69' XLS DETECTOR
 Temp Rating 350.00 °F
 Press Rating 20000.00 PSI

TEMPERATURE / PRESSURE

Series 8255XA
 Mnemonic SRPL
 Diameter 1.70"
 Weight 13.00 lb
 Length 3.30'

CCL MP 25.15'

MP 22.70'

XLS DETECTOR 16.08'

 LS DETECTOR 13.10'
 SS DETECTOR 12.88'

PRES MP 1.61'

0.00'

Total Length: 33.24'**Total Weight: Not Available****Max Diameter: 0' 1.70"****Baker Atlas****Company****WPX ENERGY****Well****AP 424-17-695****Field****PARACHUTE****County****GARFIELD****State****COLORADO****Location****Elevations****File No:**

CH090082

API No:

05045213810000



Location

SHL: 32' FNL & 2488' FWL (20 6S 95W)
BHL: 519' FSL & 2243' FWL (17 6S 95W)

SEC 17 TWP 6S RGE 95W

Elevations

KB 6935 ft
DF
GL 6909 ft

17 6S 95W
AP 21-20-695 PAD
NABORS 573