



RESERVOIR PERFORMANCE MONITOR

Baker Atlas

File No: CH091483

Company Well WPX ENERGY AP 423-17-695

API No: PARACHUTE

County GARFIELD State CO

05045213920000

Location

17 6S 95W SHL: 18' FNL & 2485' FWL (20 6S 95W)

AP 21-20-695 PAD BHL: 1937' FSL & 2204' FWL (17 6S 95W)

NABORS 573

SEC 17 TWP 6S RGE 95W

Other Services

BOND LOG

Permanent Datum GL Elevation 6909

Log Measured From KB 26 Above P. D.

Drill Measured From KB

Elevations

KB 6935

DF

GL 6909

Date	13/OCT/14	
Run	ONE	
Service Order	US091483	
Depth Driller	9907	
Depth Logger	9881	
Bottom Logged Interval	9871	
Top Logged Interval	26	
Time Started	3:00	
Time Finished	8:30	
Operator Rig Time	5.5 HOURS	
Type of Fluid in Hole	WATER	
Fluid Density	NA	
Salinity	NA	
Fluid Level	79	
Logged Cement Top	NA	
Wellhead Pressure	0	
Maximum Hole Deviation	NA	
Nominal Logging Speed	10	
Maximum Recorded Temperature	266	
Reference Log	BAKER HUGHES BOND LOG	
Reference Log Date	13/OCT/14	
Equipment No.	Location	GRAND JUNCTION
Recorded By	ORAN JACOBS	
Witnessed By	NEMELL	

- FOLD HERE

In making interpretations of logs, our employees will give the customer the benefit of their best judgement. But since all interpretations are opinions based on inferences from electrical or other measurements, we cannot, and we do not guarantee the accuracy or correctness of any interpretation. We shall not be liable or responsible for any loss, cost, damages, or expenses whatsoever incurred or sustained by the customer resulting from any interpretation made by any of our employees.

Borehole Record		
Bit Size	From	To
13.5	0	2591
8.75	2591	9886

Casing Record				
Size	Weight	Grade	From	To
9.625			0	2591
4.5	11.6	1-80	0	9886

Remarks
All data on this log is shifted and depth matched using the Gamma Ray curve to the Baker Hughes bond log dated 13/OCT/2014 at the client's request.
The depth matching process creates potential for collar lengths to vary from those recorded on other cased hole wireline units without a Gamma Ray reference.
The amount of linear shift is 4 feet.

BHT = 266 °F

SJ = 6232' - 6251'

Equipment Data					
Run	Trip	Tool	Series Number	Serial Number	Position
1	1	PCM	8250EA	10397894	FREE
1	1	TEL/CCL	8248ED	10296408	FREE
1	1	GR	2812LA	10274382	FREE
1	1	RPM	8281EA	10273848	FREE
1	1	RPM	8283PA	10585555	FREE
1	1	RPM	8281FA	10191667	FREE
1	1	TEMP	8255XA	2120516	FREE

MAIN SECTION
PNC 3-D MODE

SPL PROCESSING

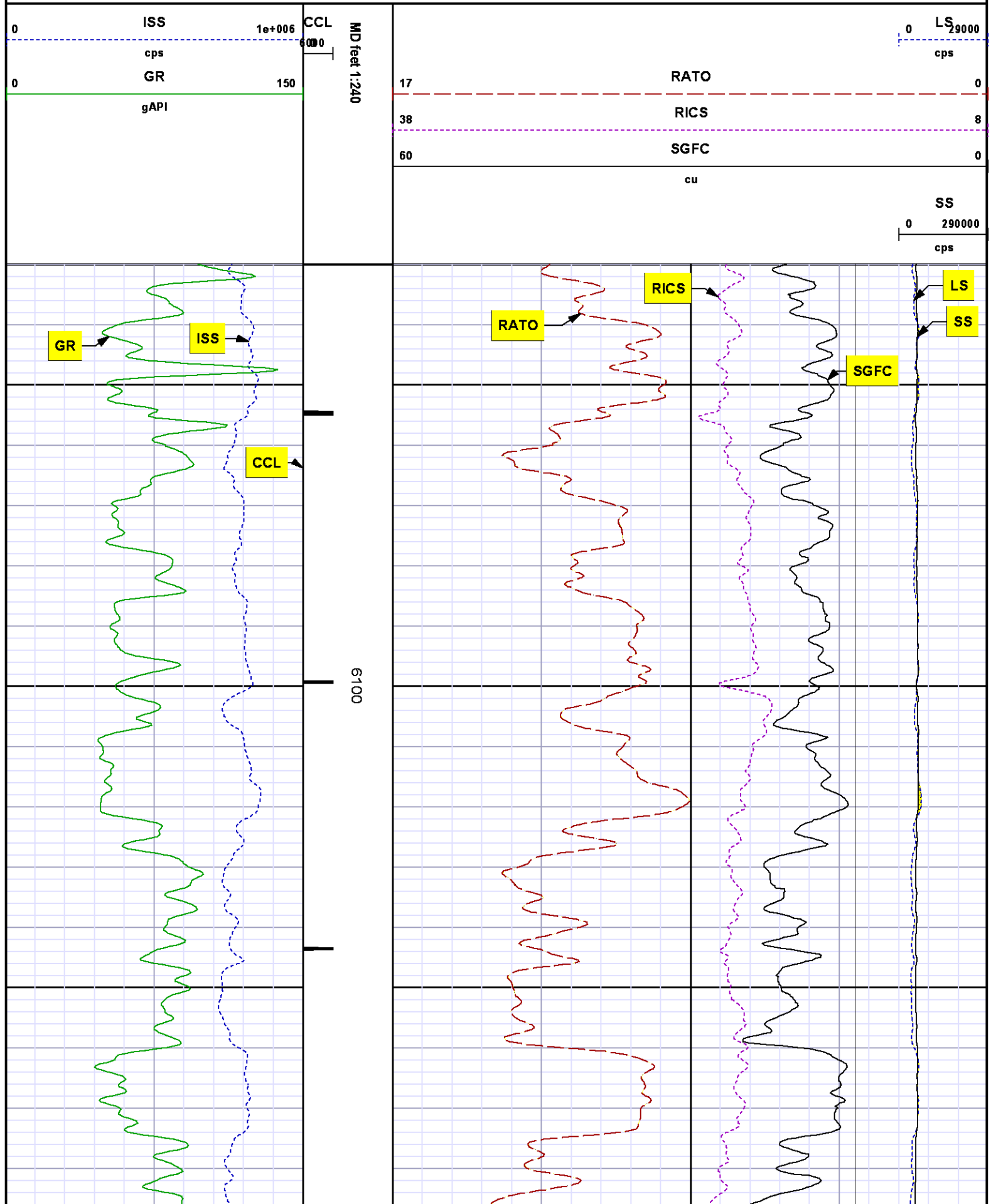
MEASUREMENT TYPE	PARAMETER	VALUE	UNITS	TOP	BOTTOM
PNC Porosity	Borehole	Cased		6018.393	7500.000
PNC Porosity	Borehole Size	8.750	inch	6018.393	7500.000
PNC Porosity	Casing Size	4.500	inch	6018.393	7500.000
PNC Porosity	Gas Filled	Non Gas Filled		6018.393	7500.000
PNC Porosity	Matrix	Sandstone		6018.393	7500.000
TPS Pressure	Temperature Corr. Source	Fixed (72.00)	degF	6018.393	7500.000
PNC Porosity	Borehole	Cased		7500.000	9883.955
PNC Porosity	Borehole Size	8.750	inch	7500.000	9883.955
PNC Porosity	Casing Size	4.500	inch	7500.000	9883.955
PNC Porosity	Gas Filled	Non Gas Filled		7500.000	9883.955
PNC Porosity	Matrix	Sandstone		7500.000	9883.955
TPS Pressure	Temperature Corr. Source	Fixed (72.00)	degF	7500.000	9883.955

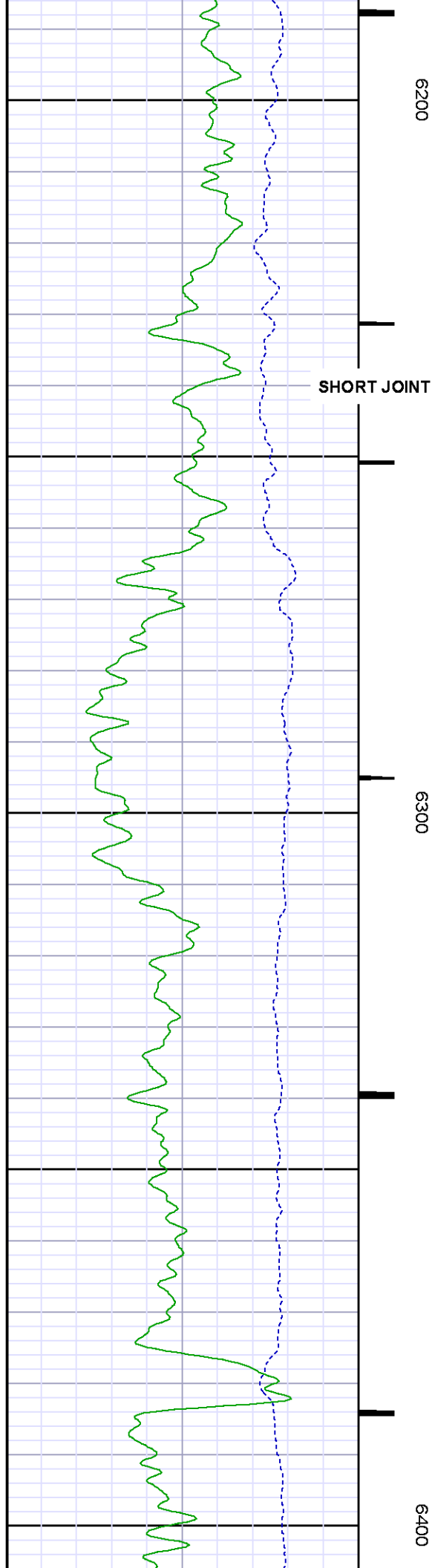
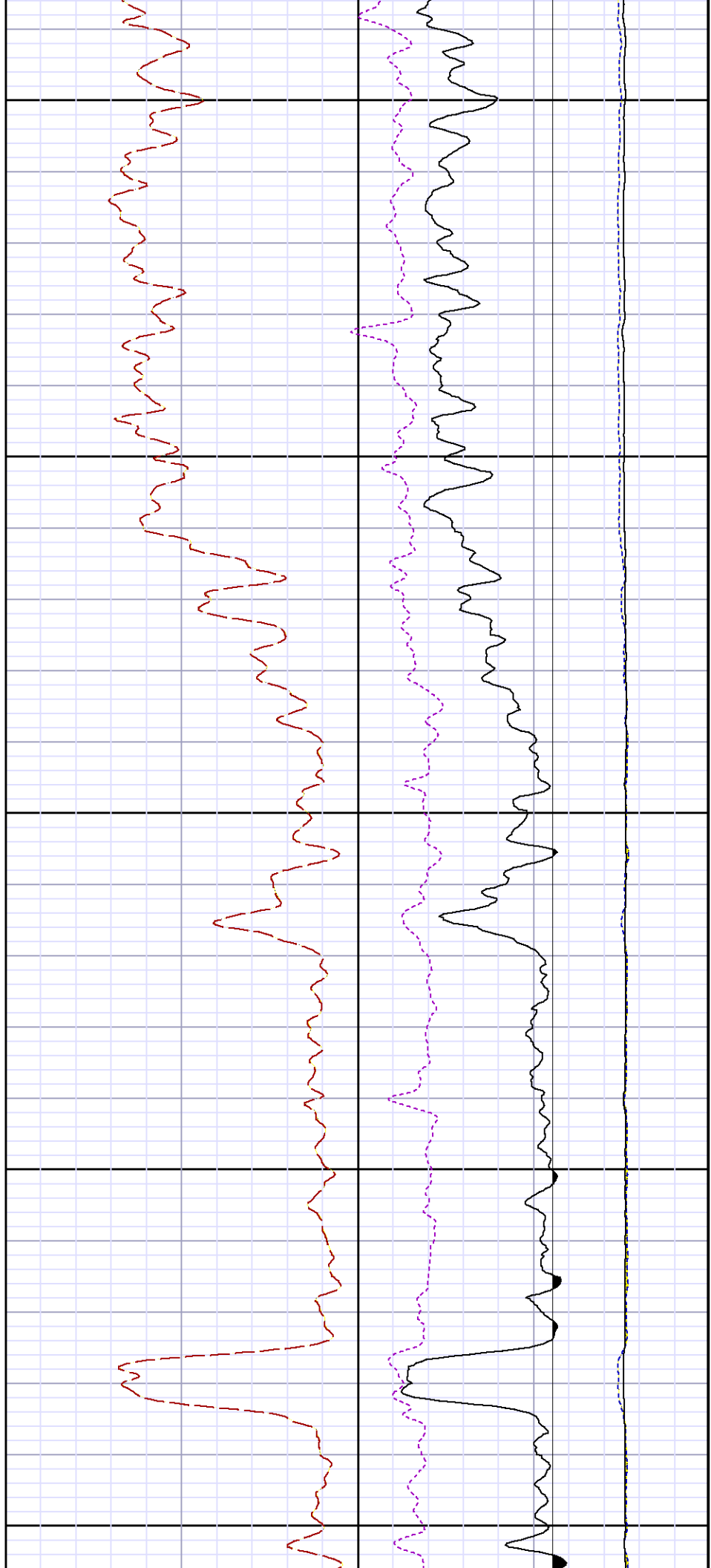
DEPTH OFFSETS

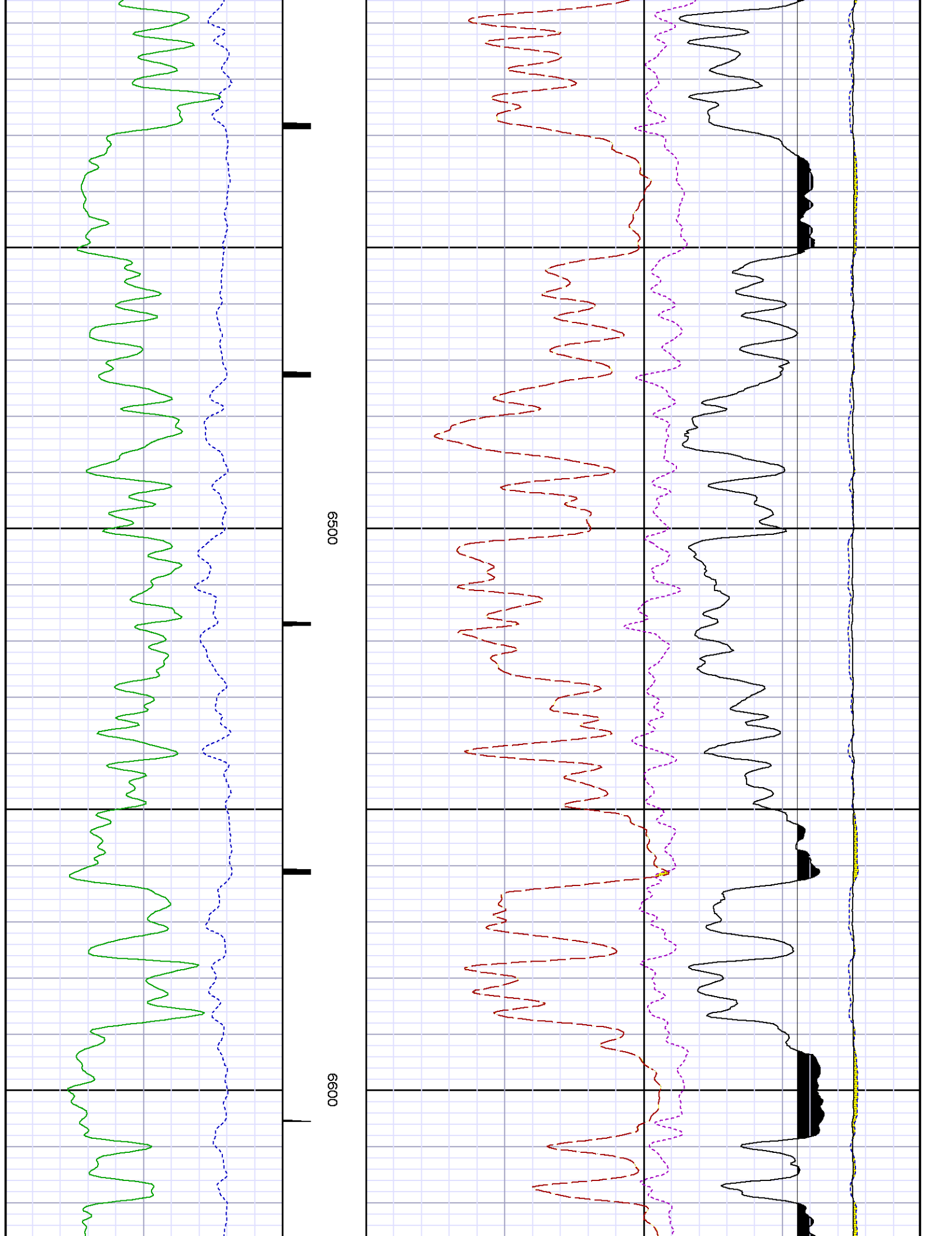
(for Acquired Curves)

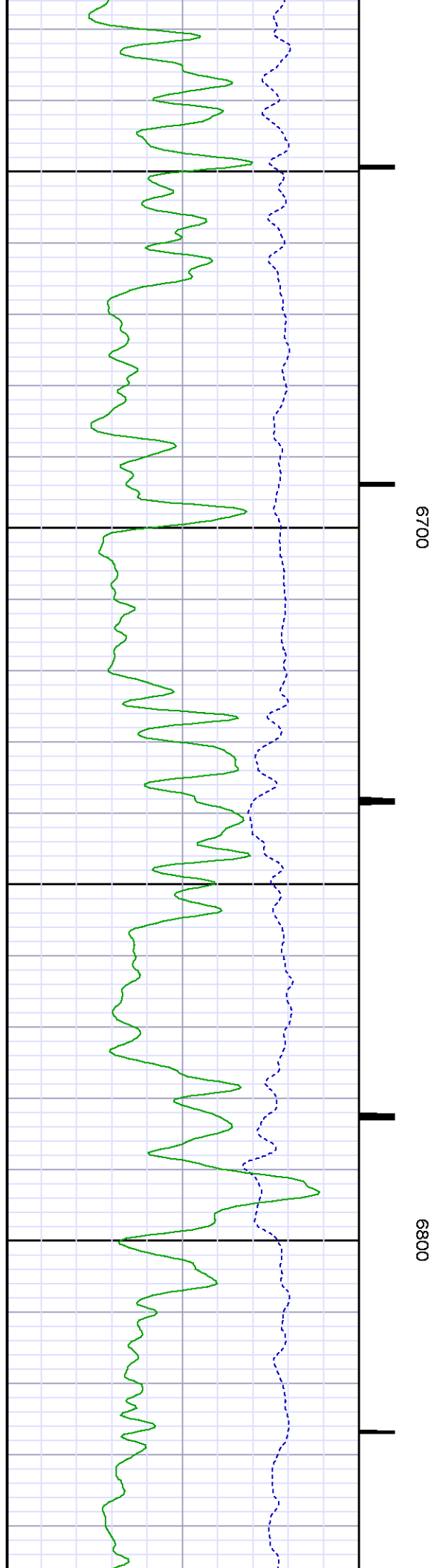
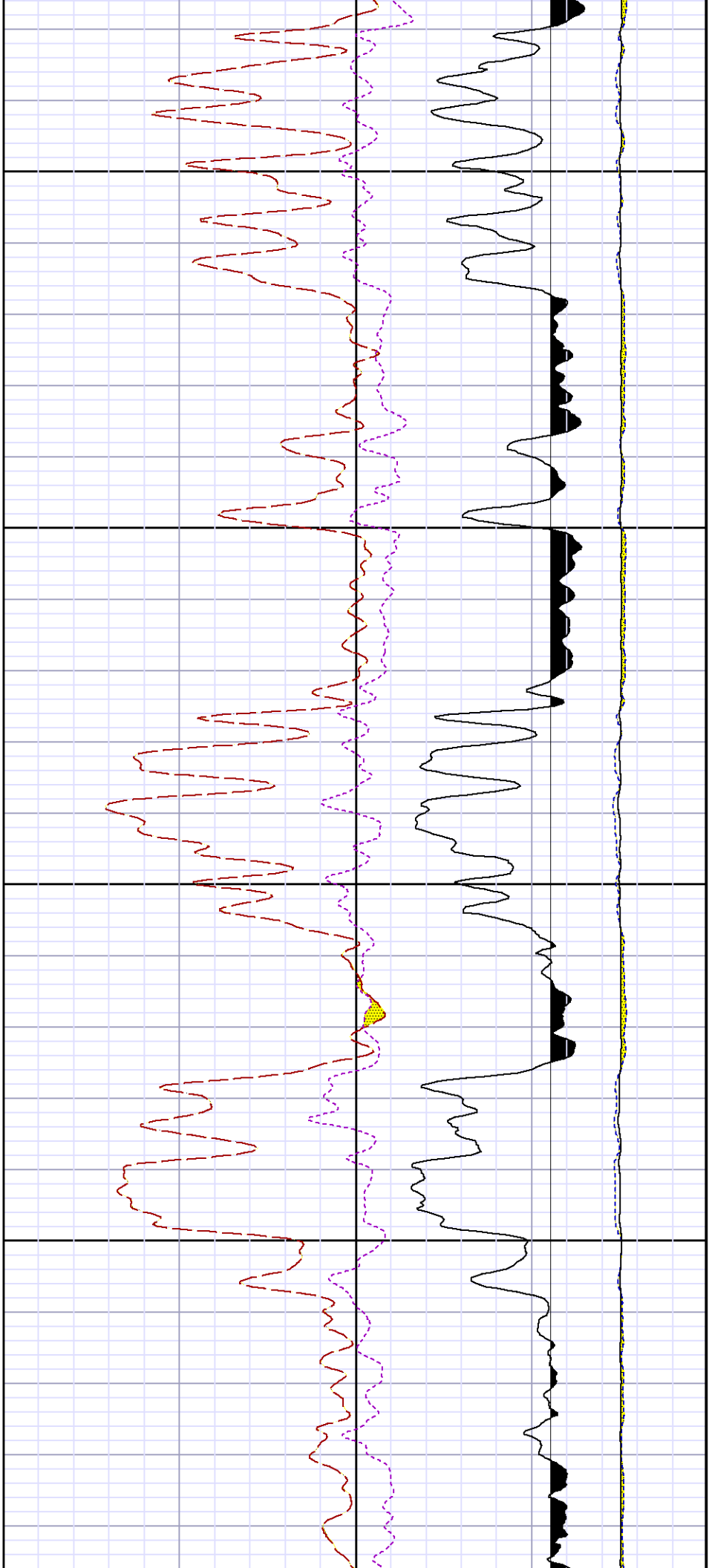
SERIES	DEPTH OFFSET	ACQUIRED CURVES
8248ED	-26.519	FLTM
8248ED	-24.519	CCL CHV
2812LA	-21.969	GR
8281XA	-12.702	HVC3Q0 SEQ3 AMA3 AML3 BKX CXS CPT3Q0 CPT3Q2 CPT3Q3 CPT3Q4 ET3 IXS MCS3 MCS3Q0 QCAL3 RGN3 RICX SDA3 SDL3 SGA3 SGL3 STA3 XS ASPEC3 AMB3 AMF3 CHF3 IXSC IXSN RATO23 RICXC RIN13C RIN23 RIN23C SD3D SG3D SGB3 SGF3 WDT3 CXSR IXSR XSR RICXR
8281XA	-12.291	HVC2Q0 SEQ2 AMA2 AMB2 AMF2 AML2 BKL CHF2 CLS CPT2Q0 CPT2Q2 CPT2Q3 CPT2Q4 ET2 ILS LS MCS2 MCS2Q0 QCAL2 RGN2 RICL RONE23 RTWO23 SDA2 SDL2 SGA2 SGB2 SGF2 SGK2 SGL2 STA2 ASPEC2 ILSC ILSN WDT2 RICLC CLSR ILSR LSR RICLR
8281XA	-12.041	CPRS HVC1Q0 MV SEQ SEQ1 AMA1 AMB1 AME1 AMF1 AML1 BKS CHF1 CSS CORB CORF CPT1Q0 CPT1Q2 CPT1Q2A CPT1Q2B CPT1Q2C CPT1Q3 CPT1Q4 CPT1Q5 ET1 G1 G2 GE1S GE2S ISS MCS1 MCS1Q0 QA1 QCAL1 QM1 RATO RATO13 RBOR RGN1 RICS RIN RONE RPOR RTWO RIN13 RONE13 RTWO13 SALB SC1 SDA1 SDL1 SGA1 SGB1 SGBC SGE1 SGF1 SGFC SGK1 SGL1 SS SS2 STA1 PD1S PD2S PD3S MD1S MD2S MD3S DG1S DG2S DG3S PD1M PD2M PD3M MD1M MD2M MD3M DG1M DG2M DG3M MVS MA MVM FILV IAM TA PVM PVS IAS SSTAT QPD1 QPD2 QPD3 QMD1 QMD2 QMD3 QDG1 QDG2 QDG3 QMA QTA QFILV QMV QPV QIA DERR DCNT QPK1 QSA1 PKS1 ASPEC1 H0C FE2XC ISSC RINC ISSN RDN WDT1 RICSC CSSR G1R G2R ISSR SSR SS2R RATOR RATO13R RBORR RICSR RINR RIN13R RONE RPORR RTWOR
8255XA	-0.792	PTFS PTMS
8255XA	-0.775	SPF1 SPFQ TSCP TSDP
8255XA	0.000	DTEM TEMP TNF
SYSTEM	0.000	TEN TTEN

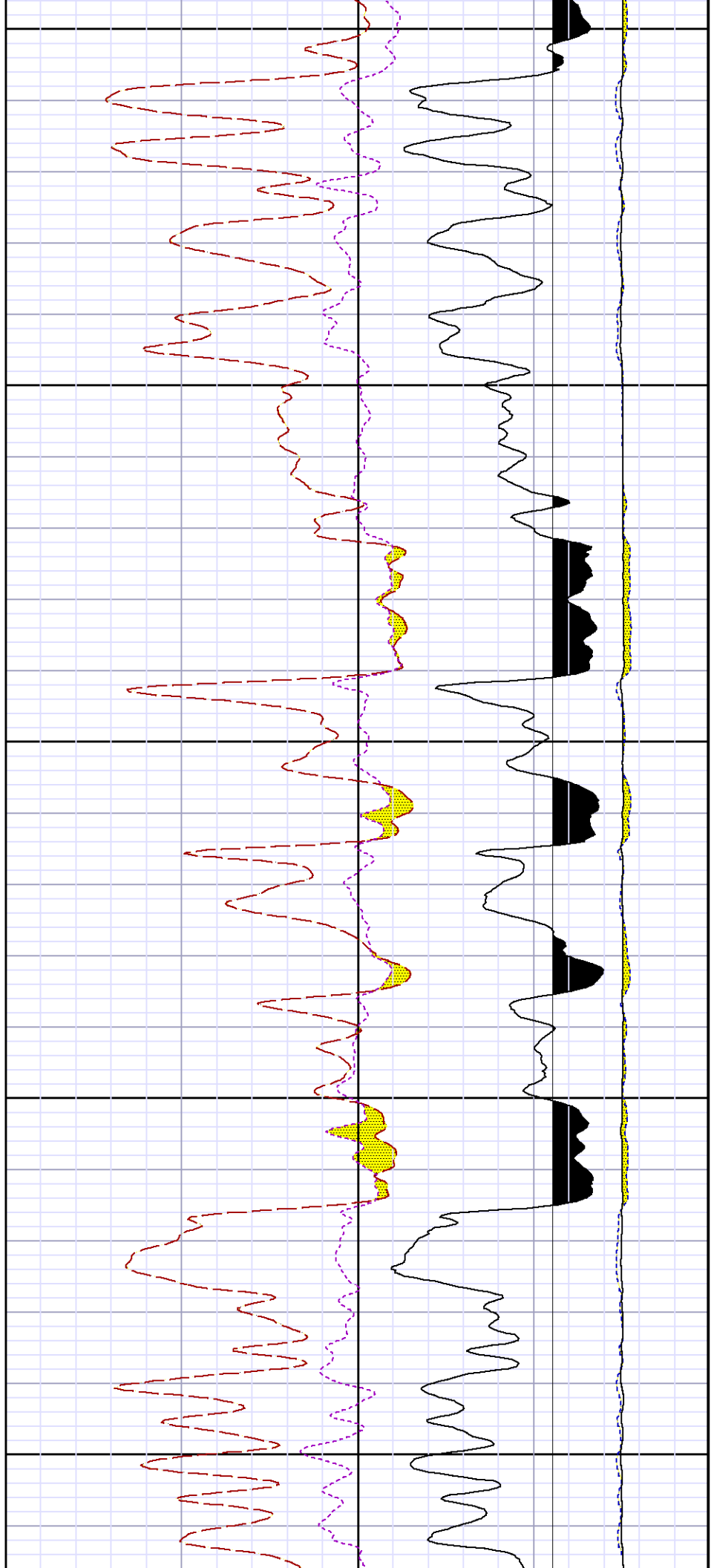
Created : 10/13/2014 6:44:13 AM





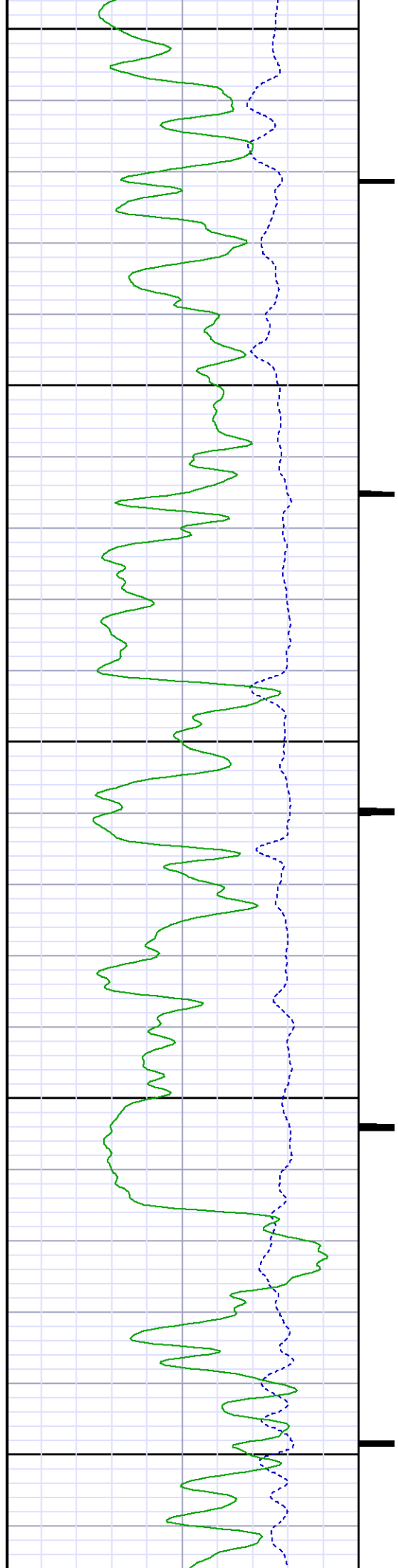


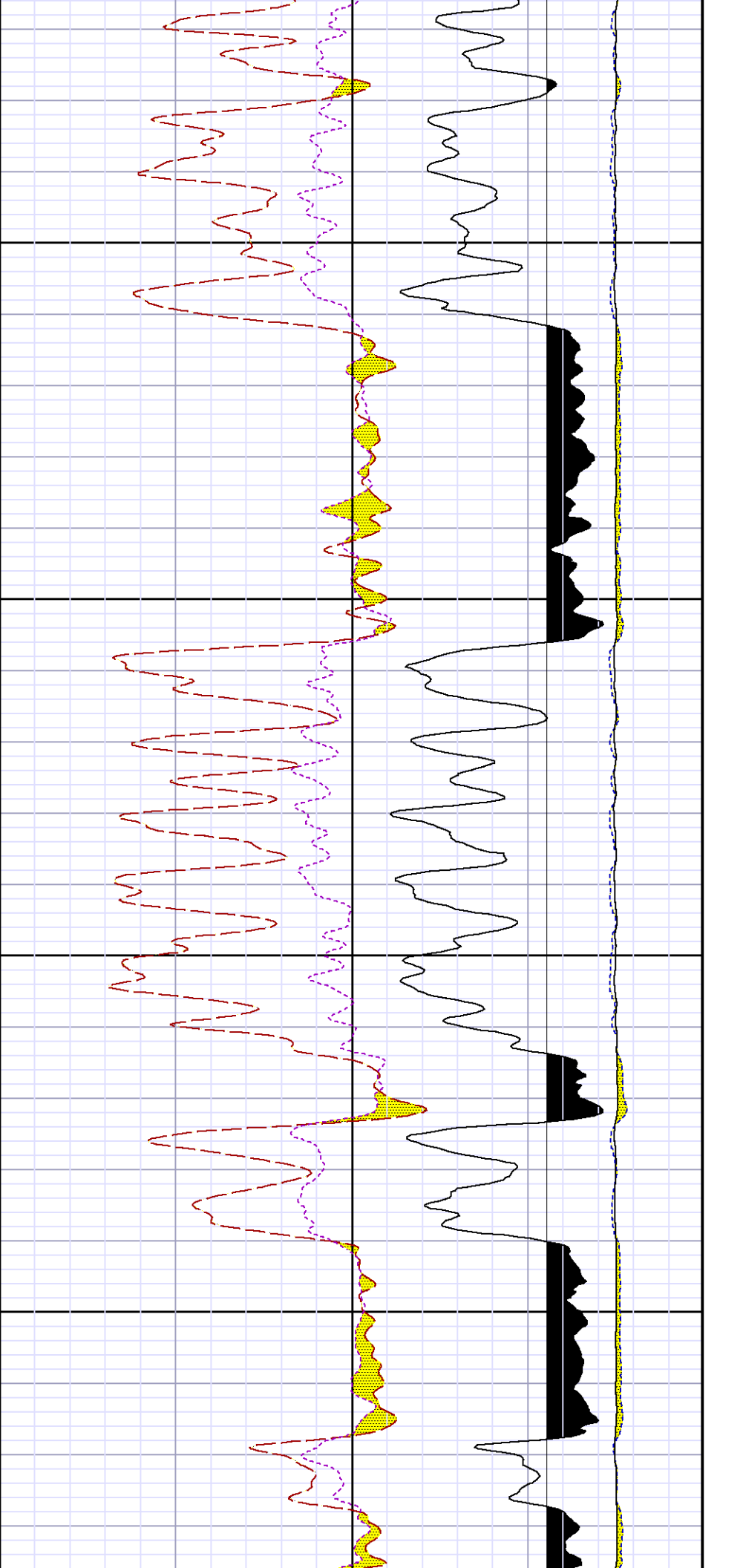




6900

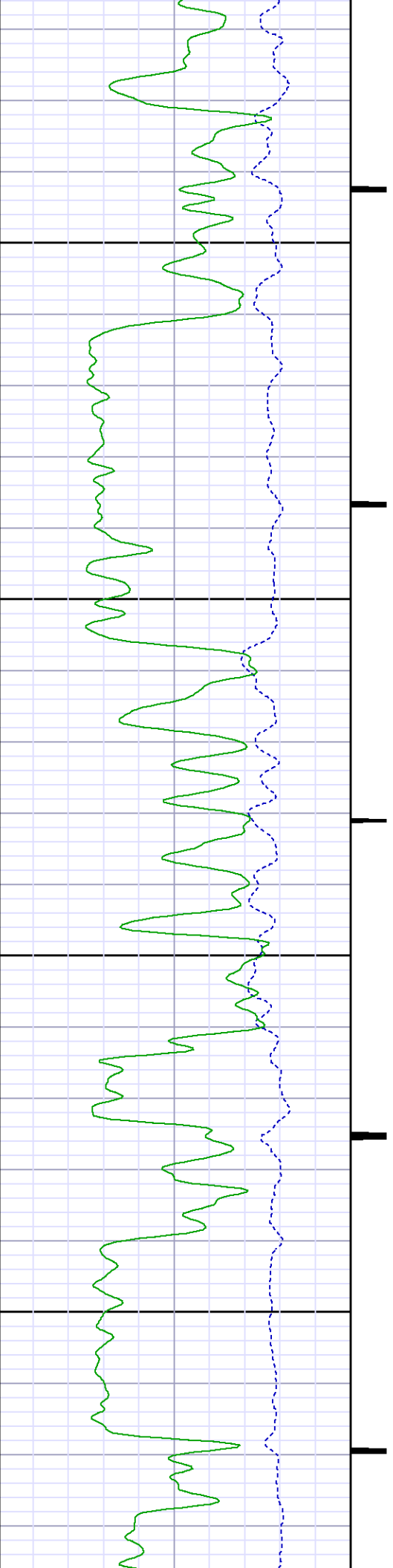
7000

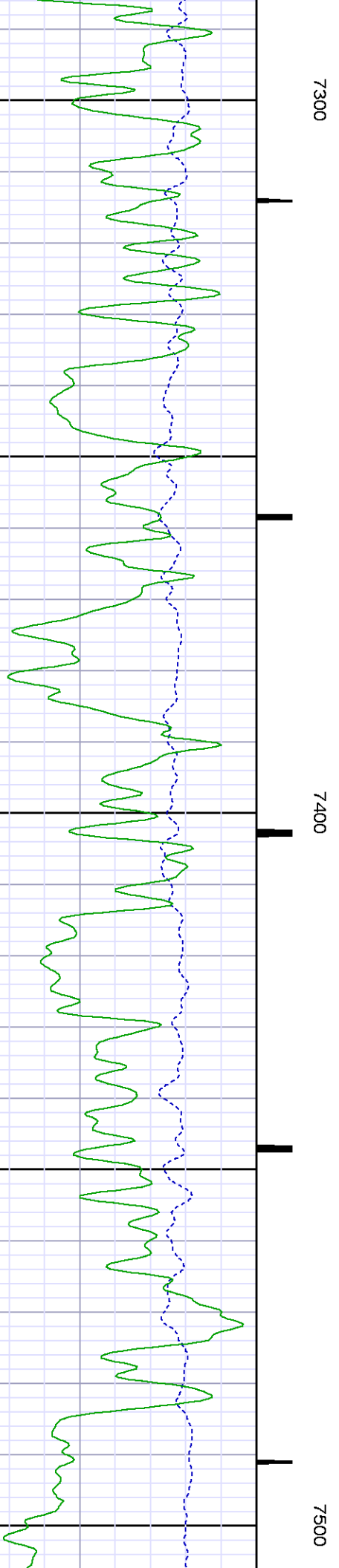
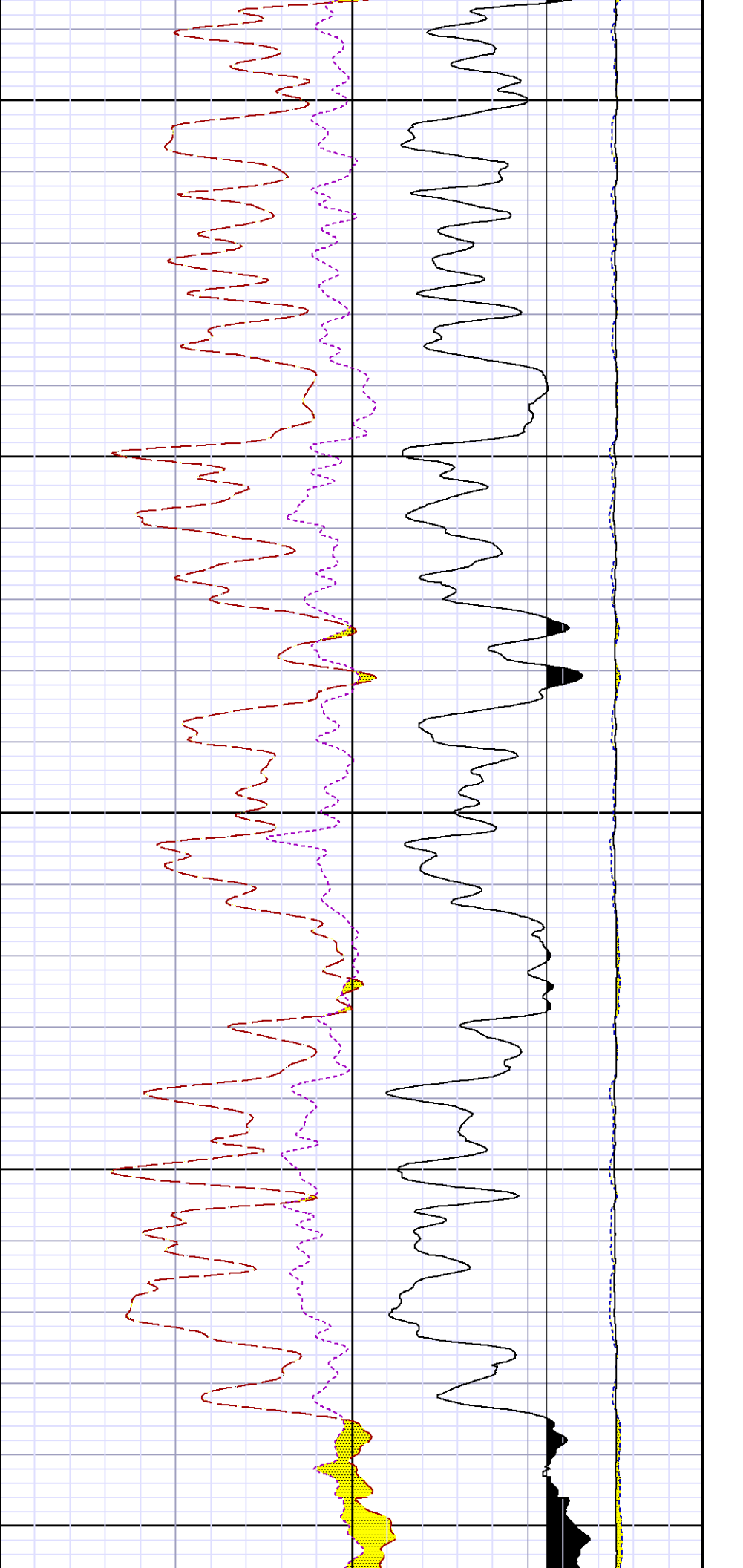


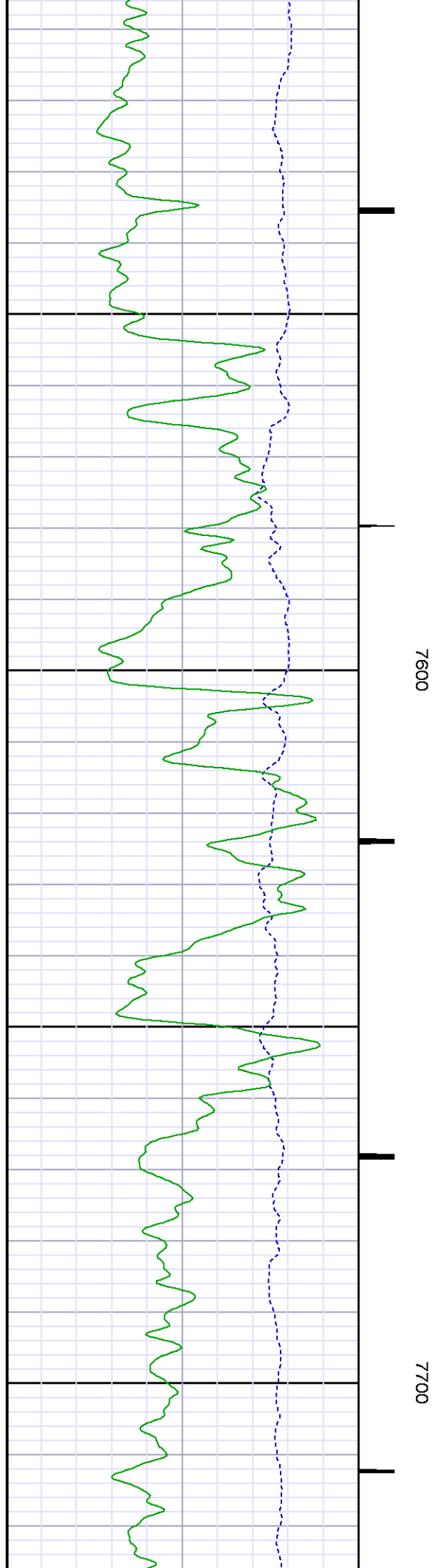
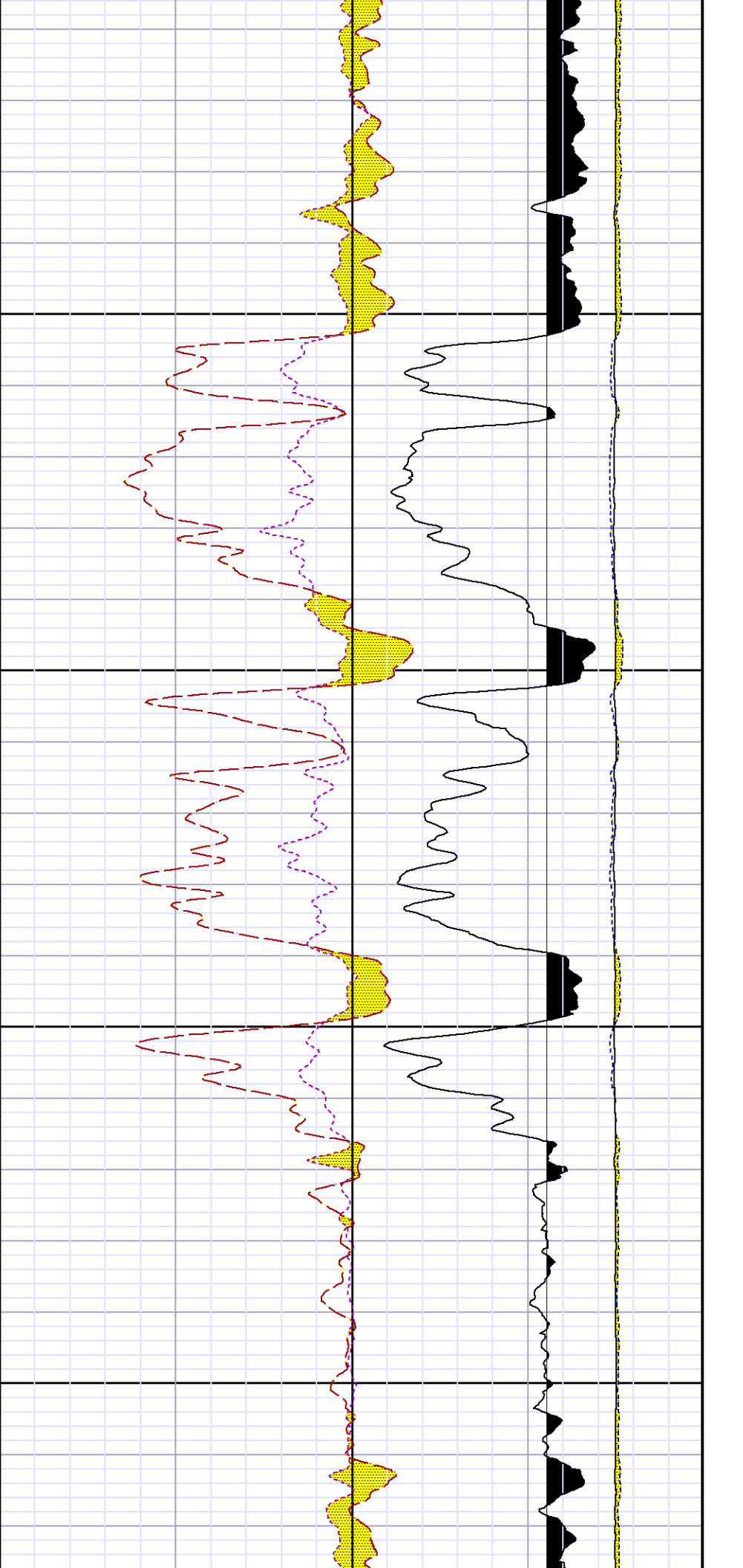


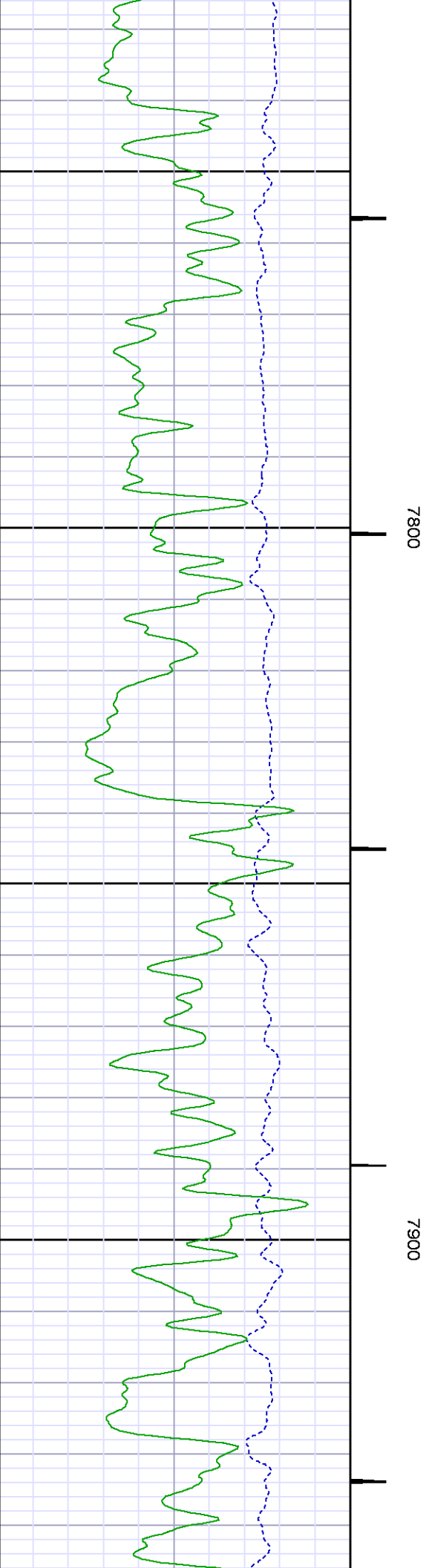
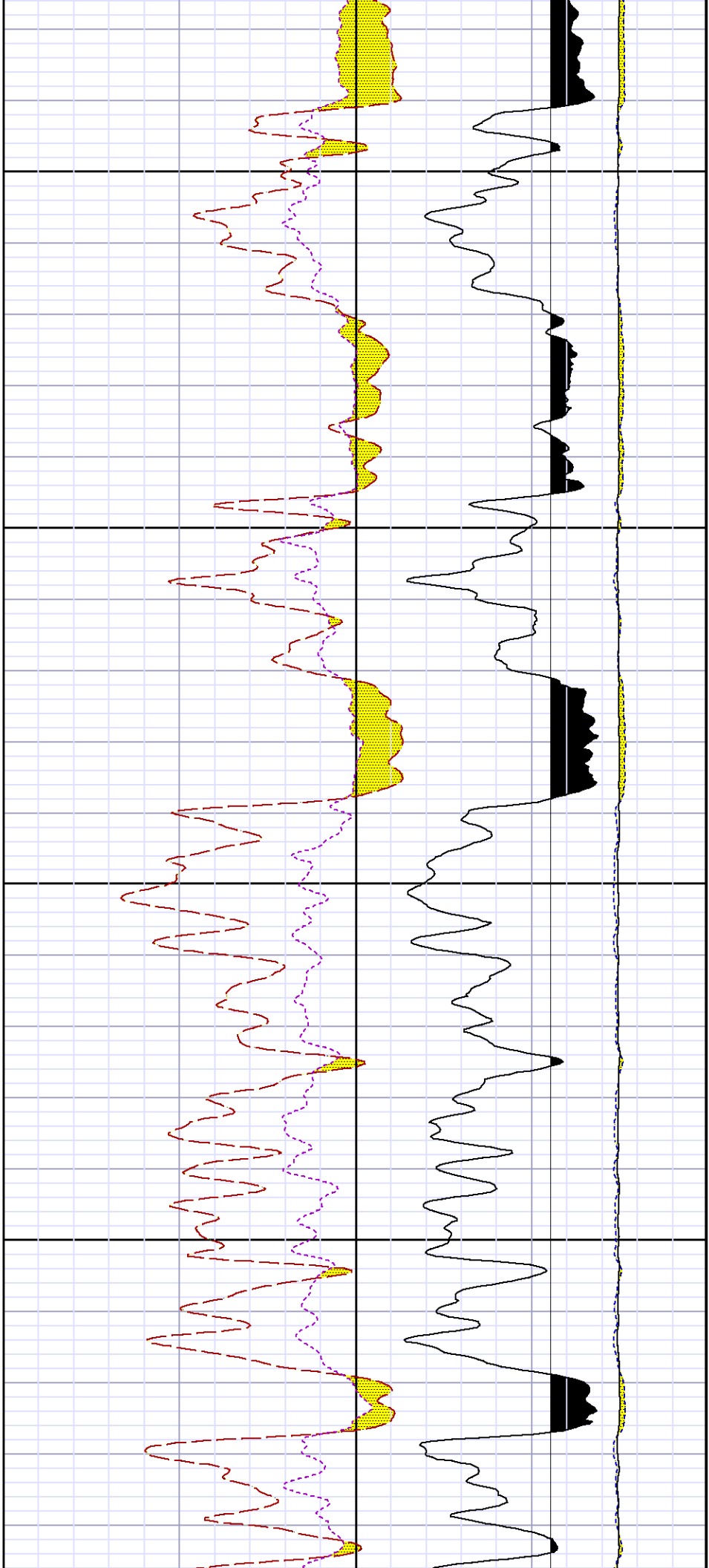
7100

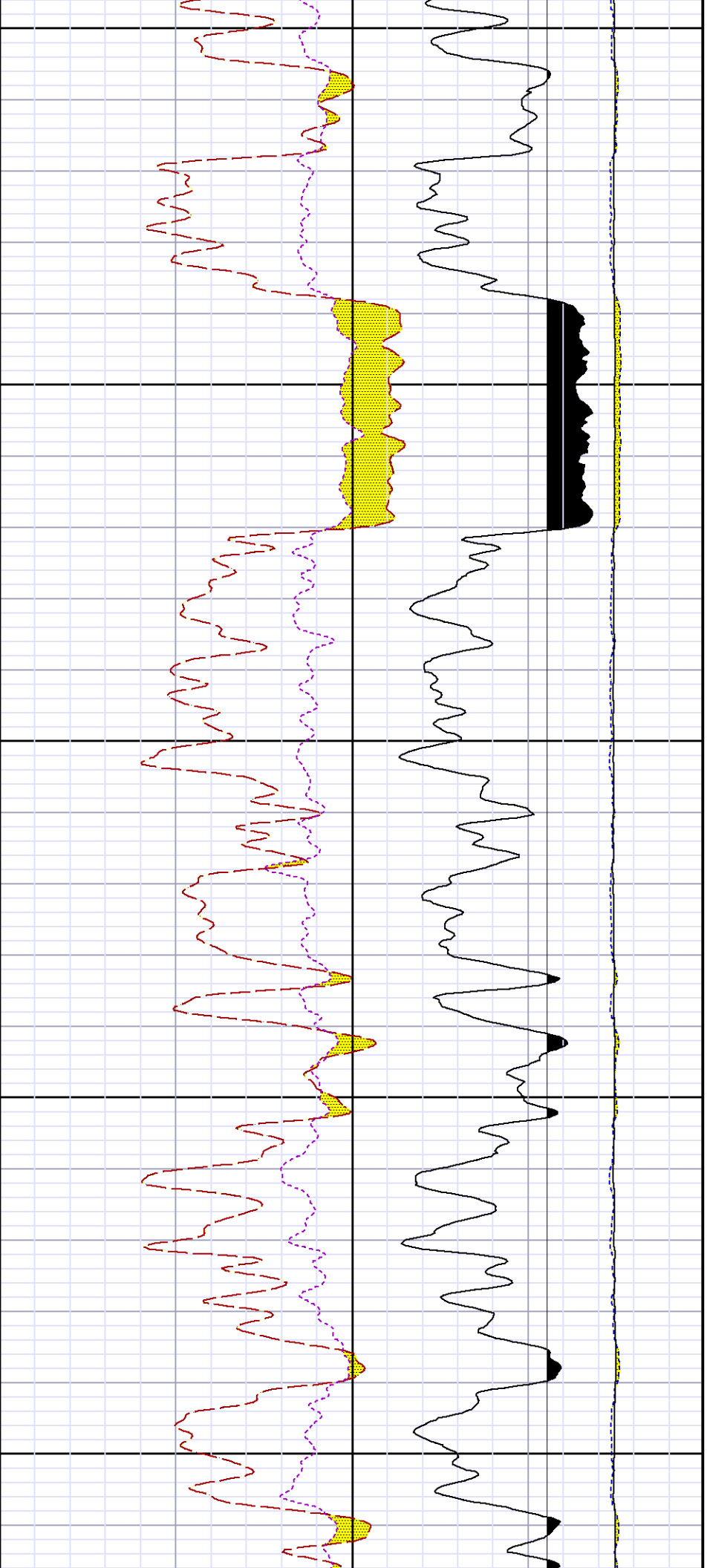
7200





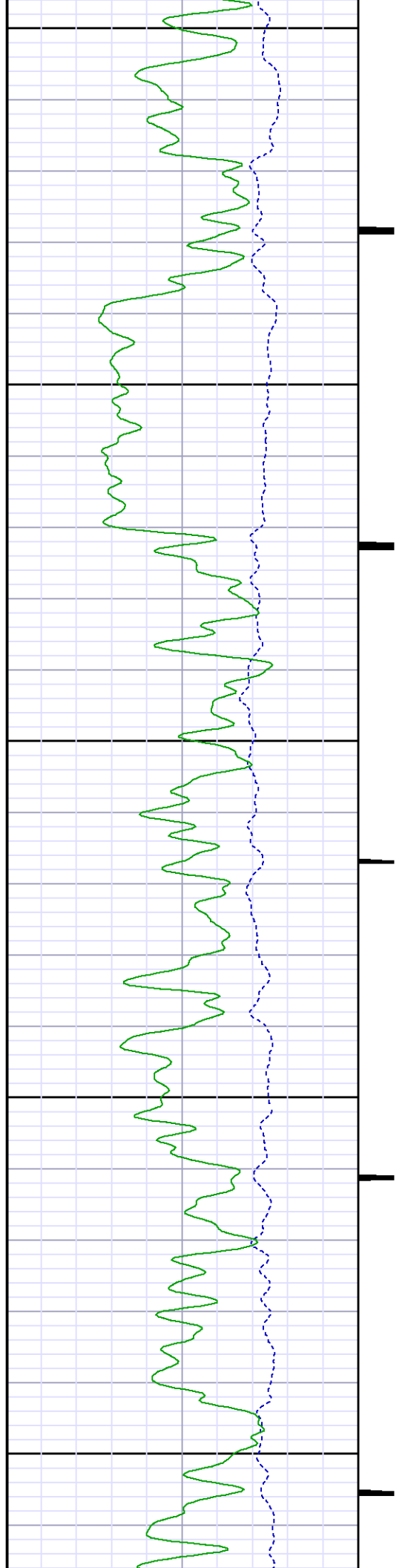


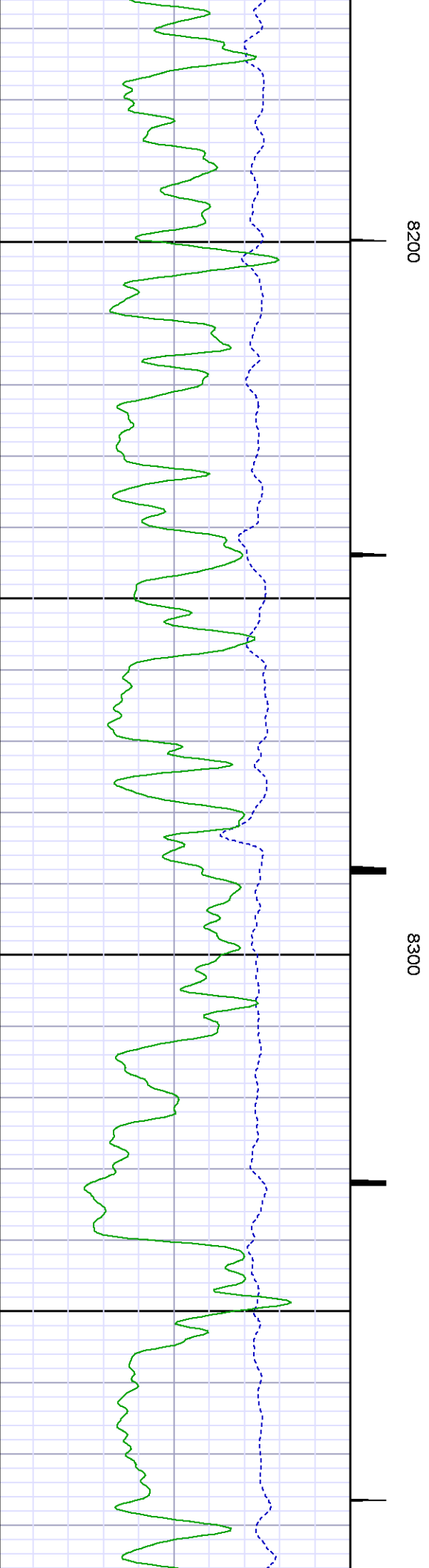
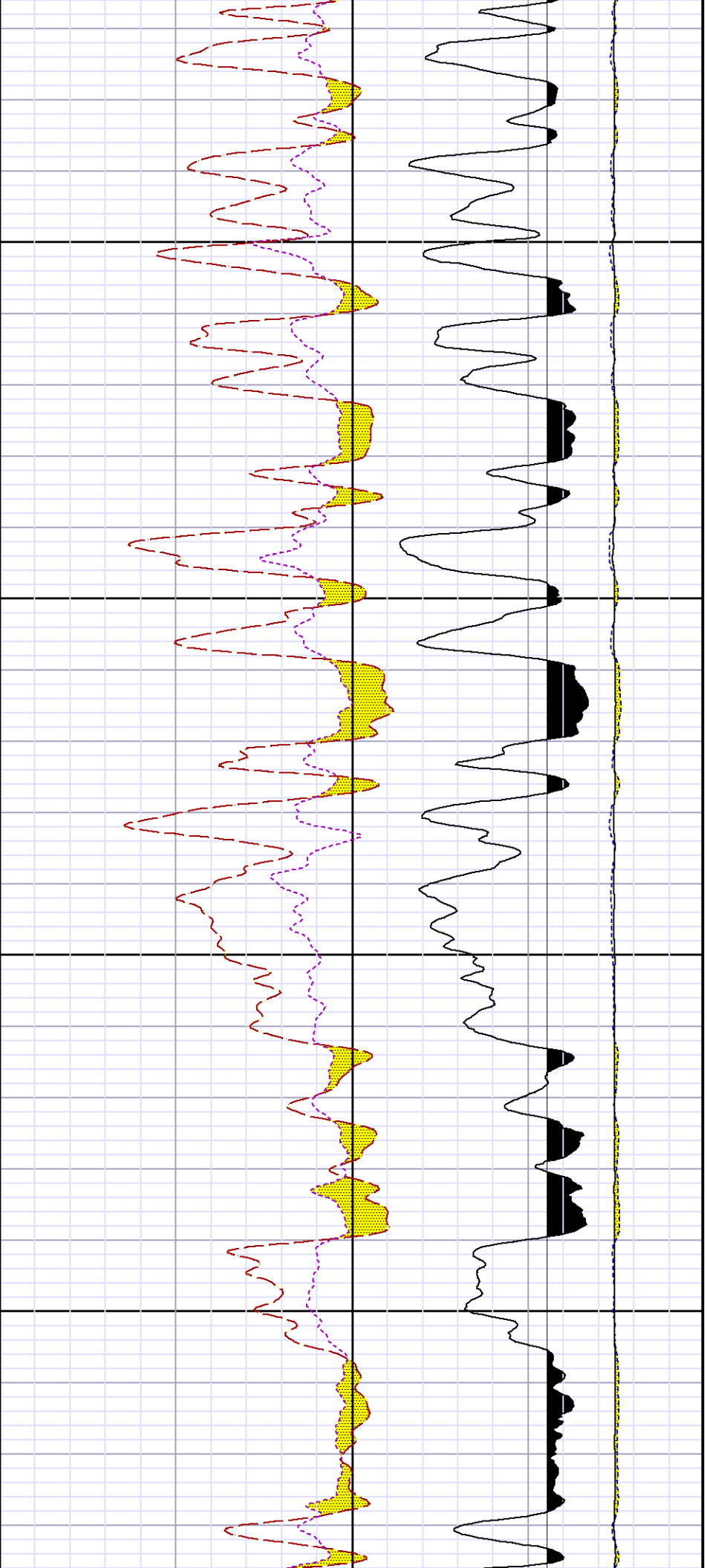


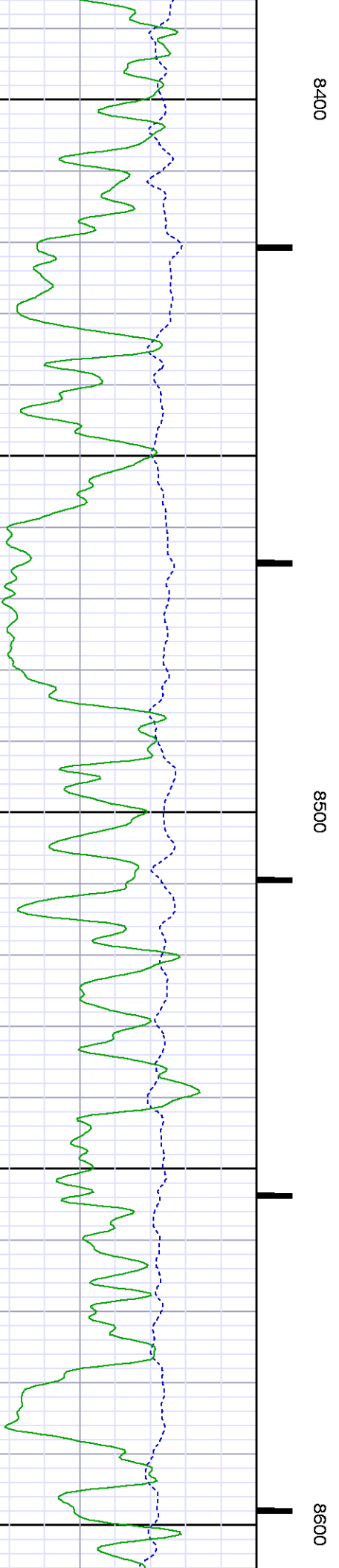
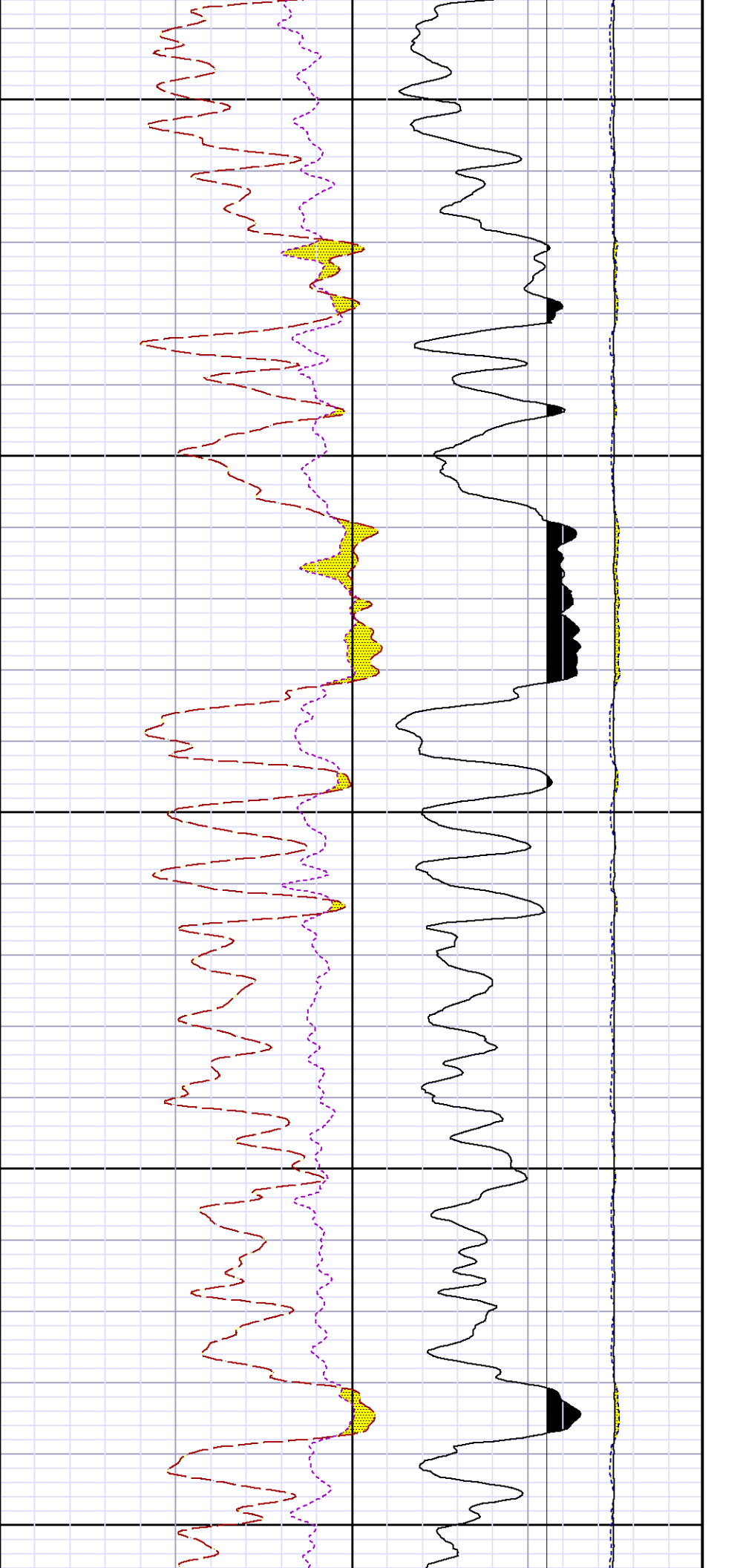


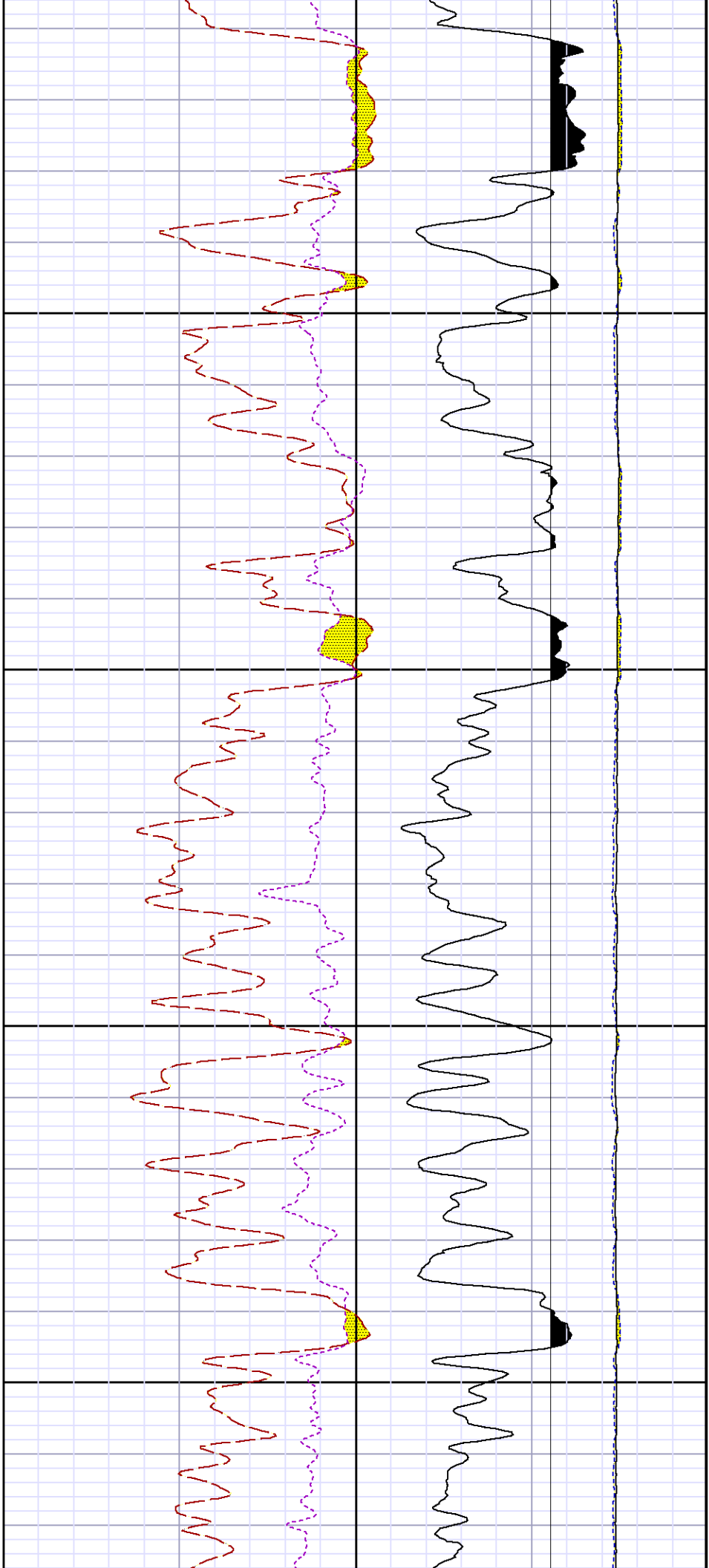
8000

8100



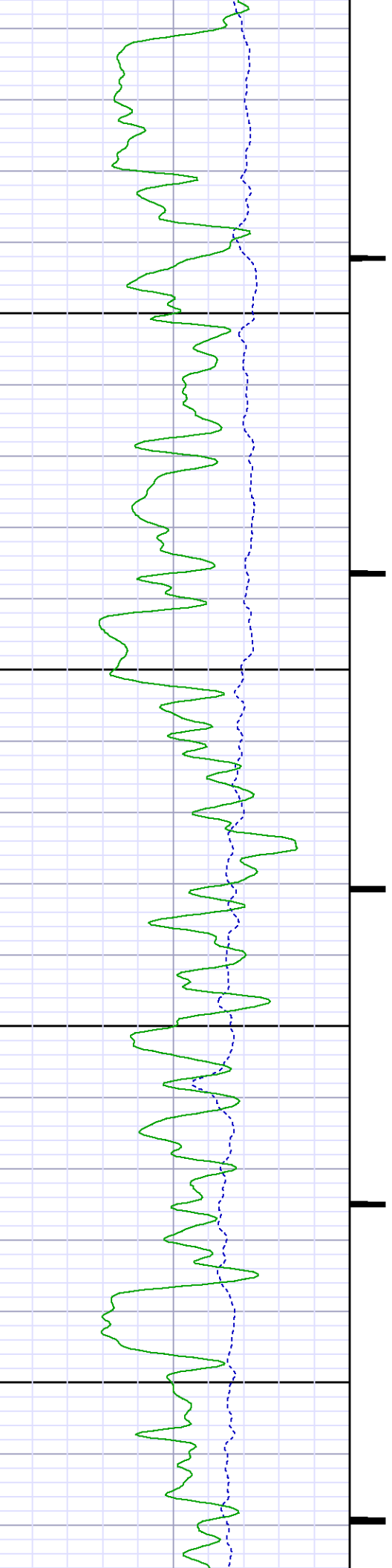


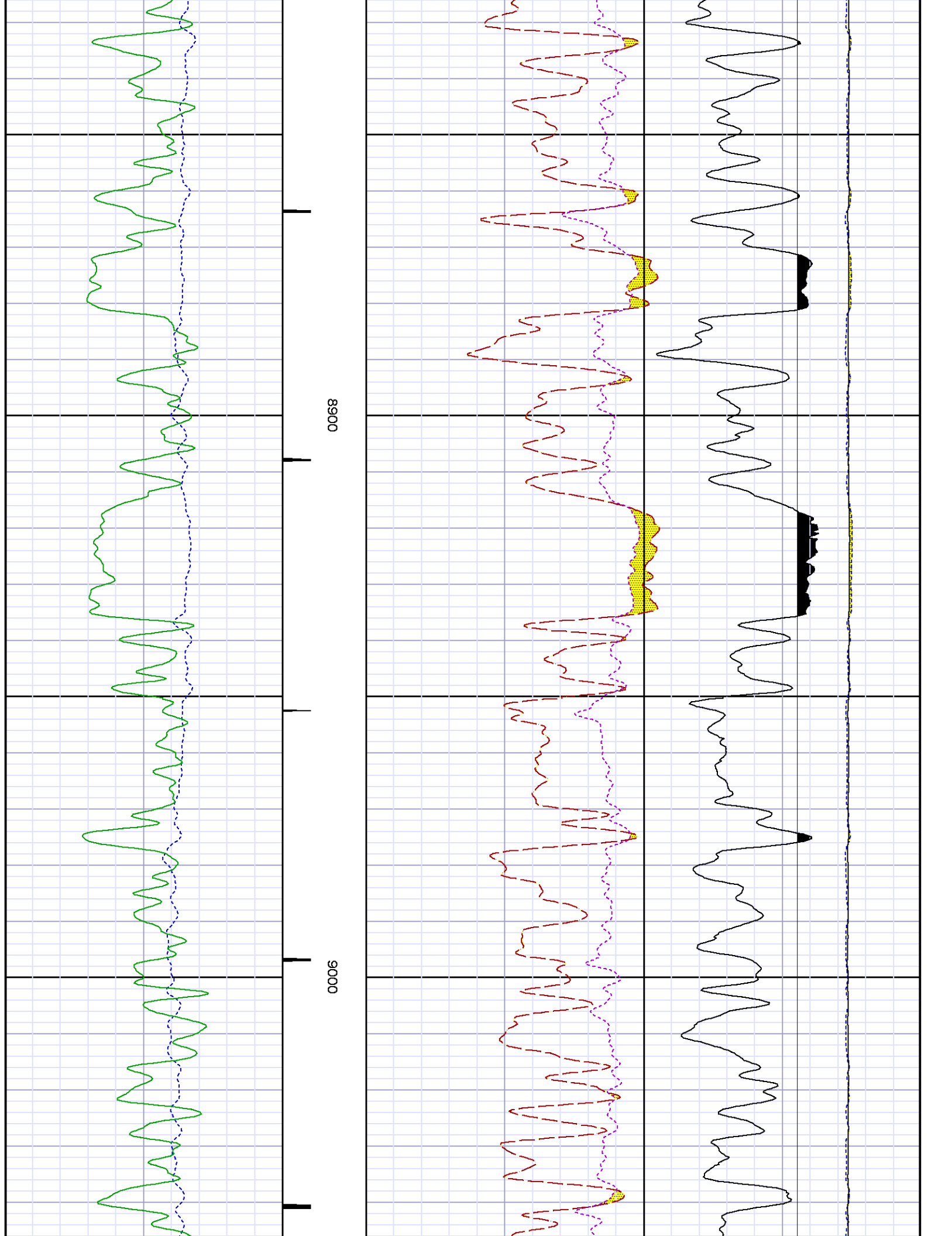


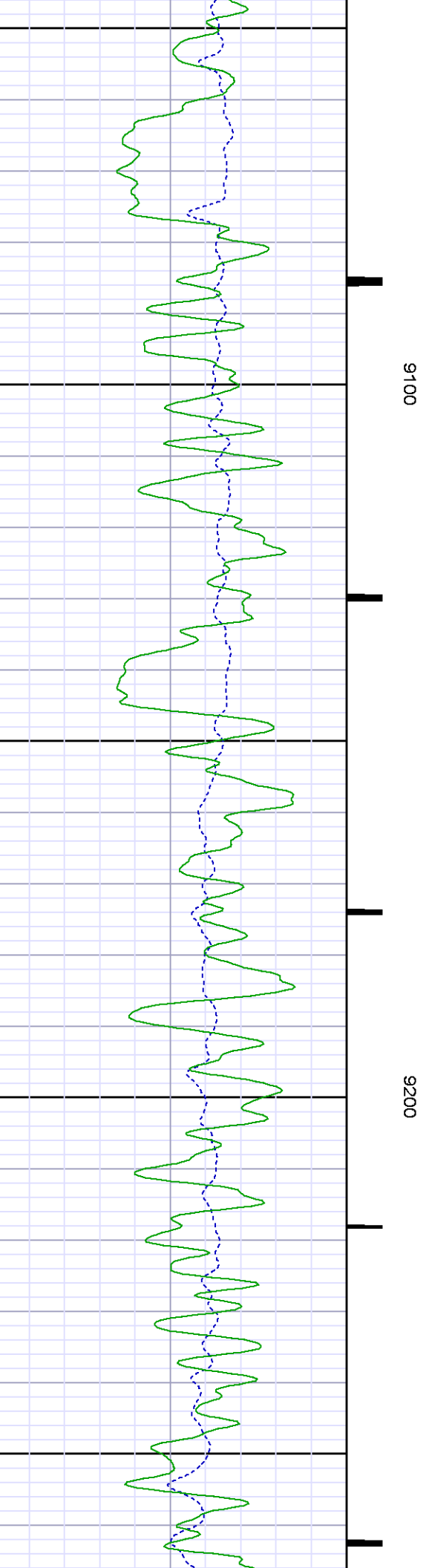
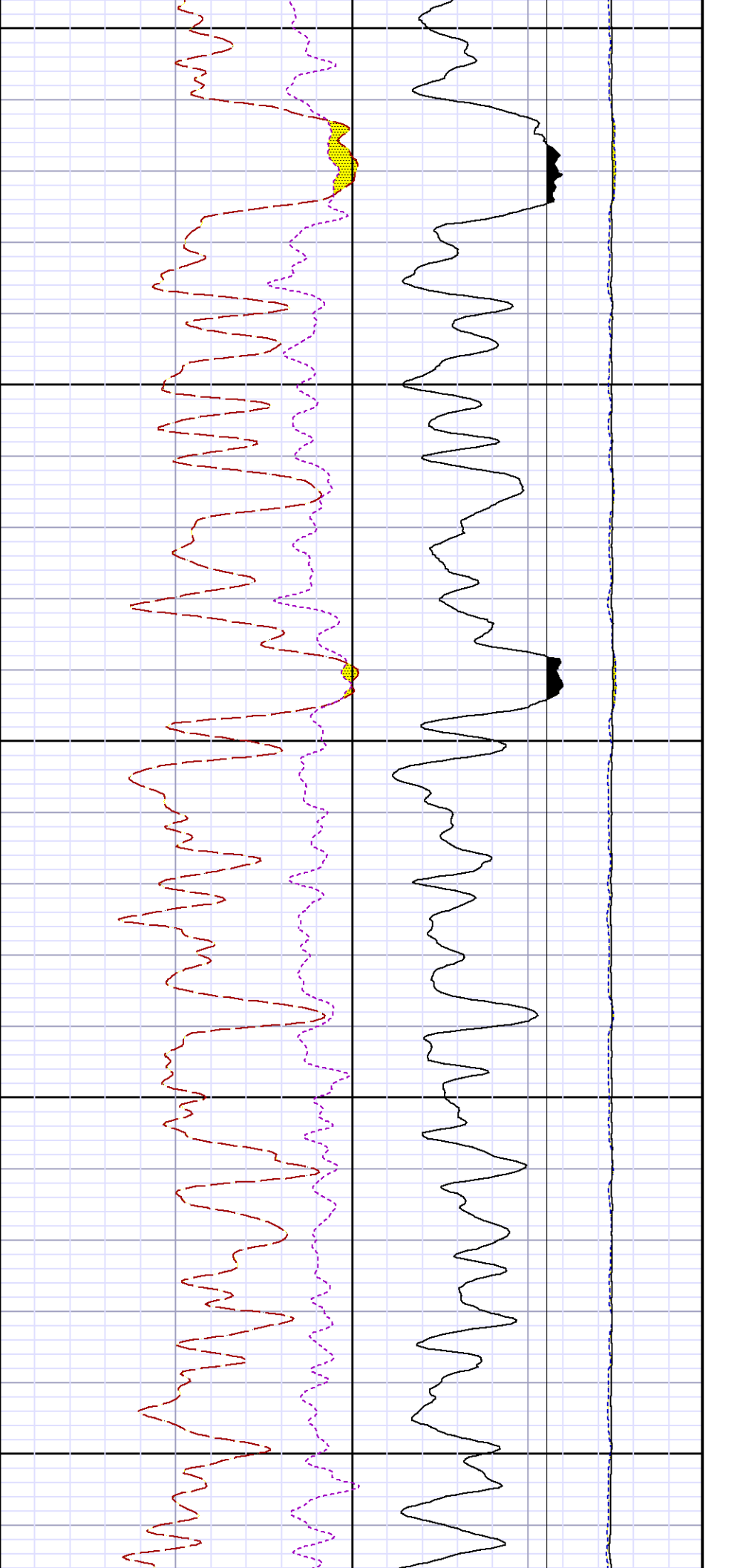


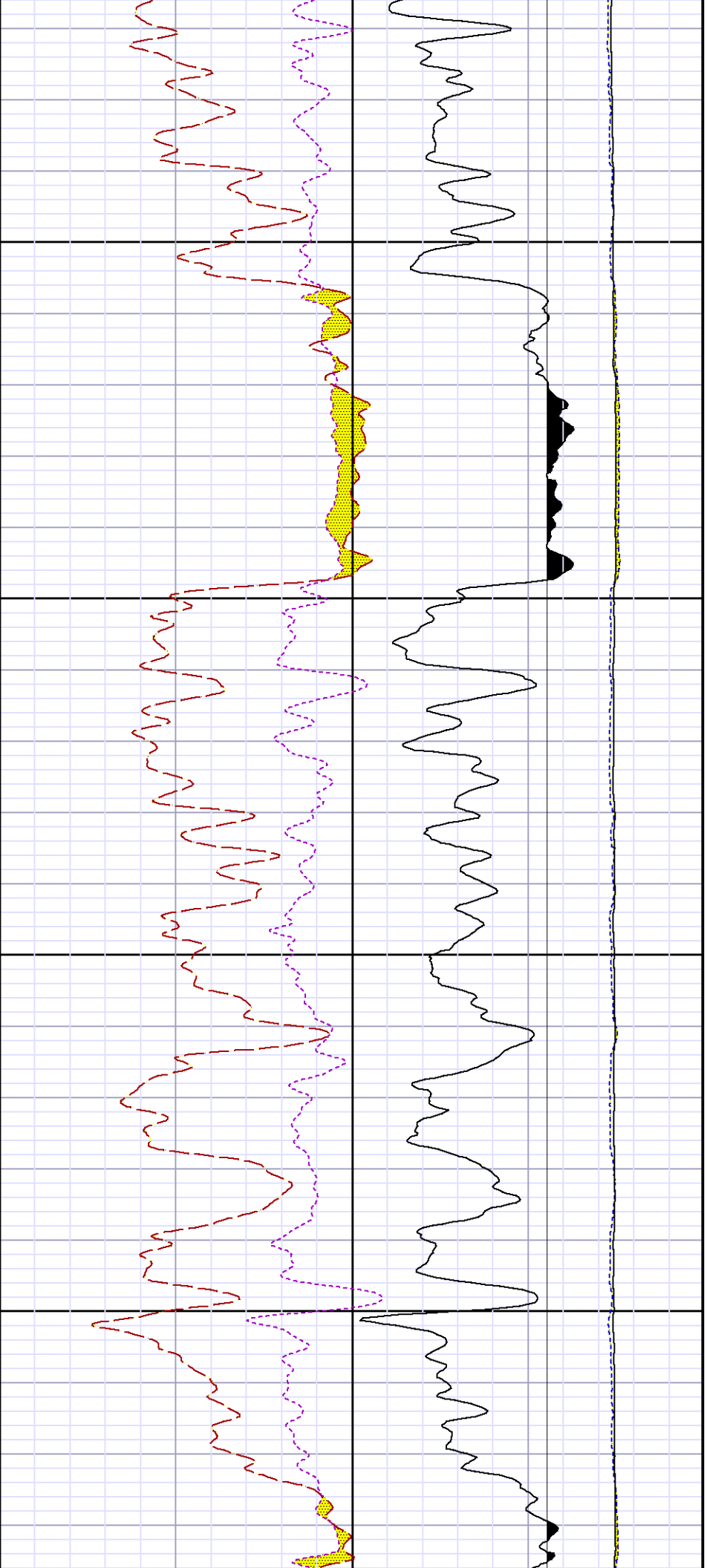
8700

8800



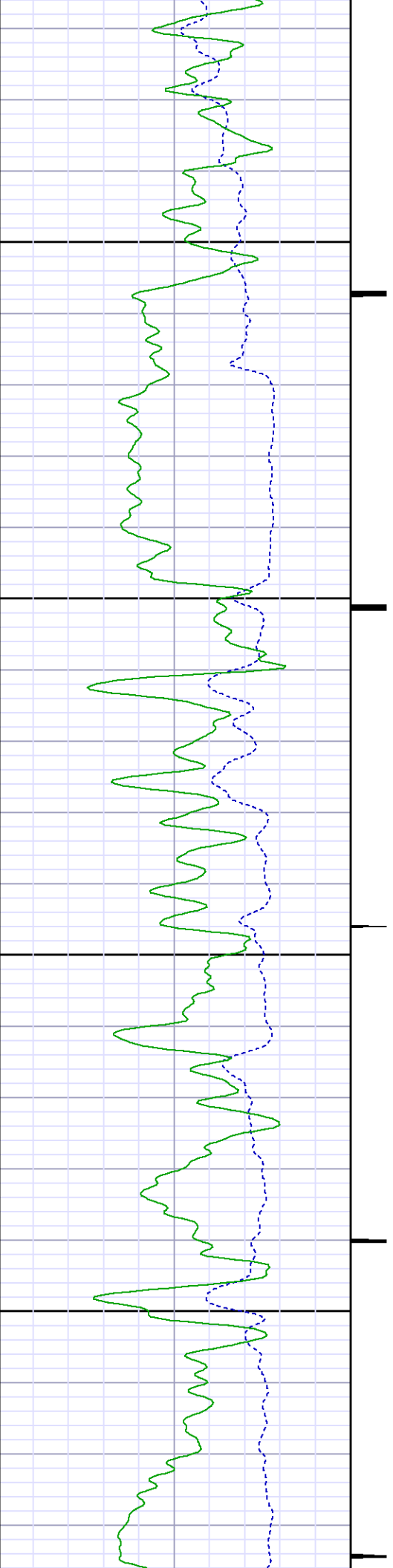


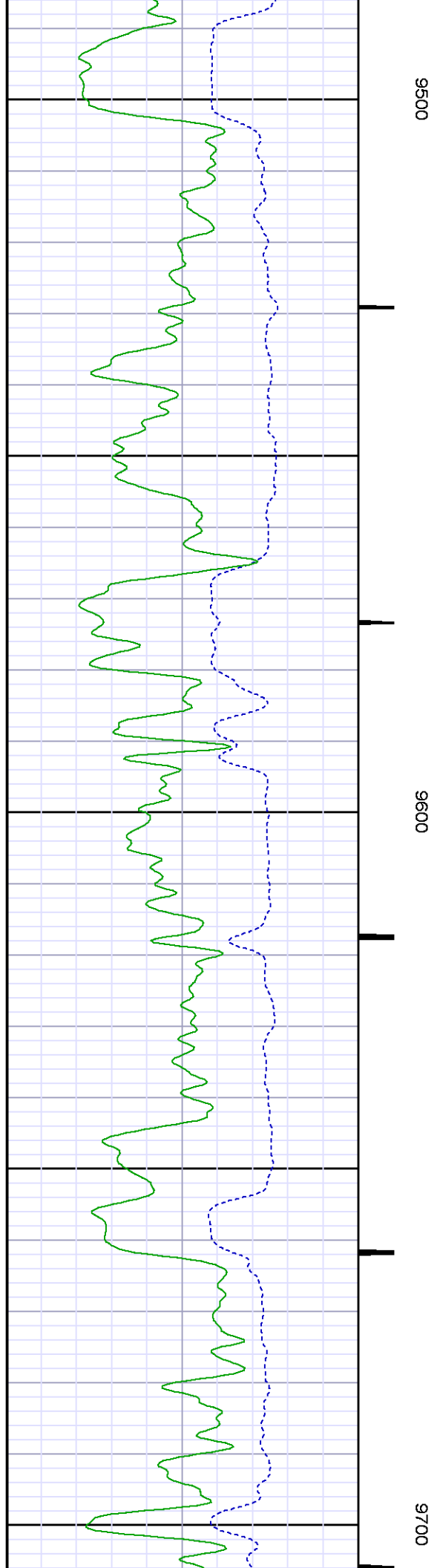
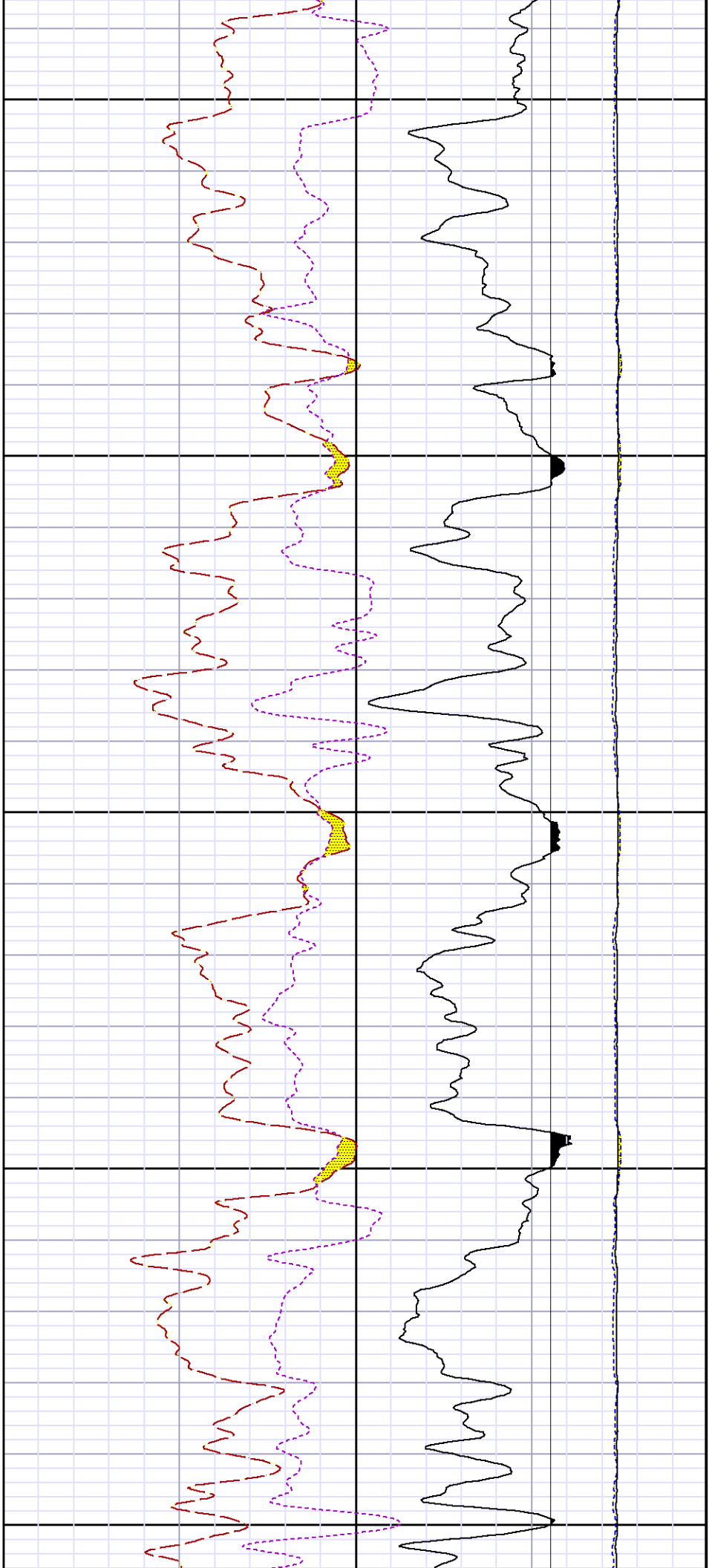


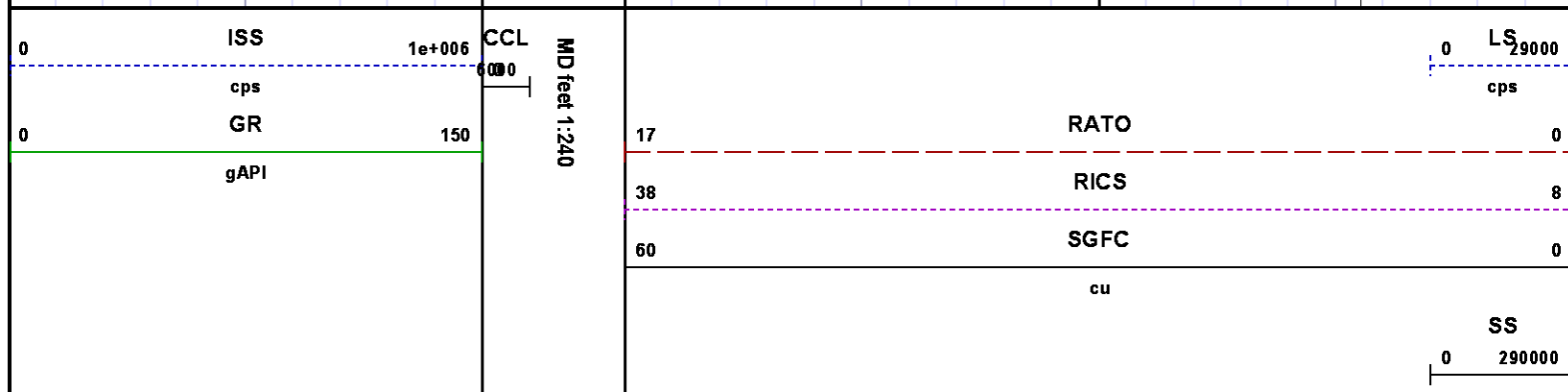
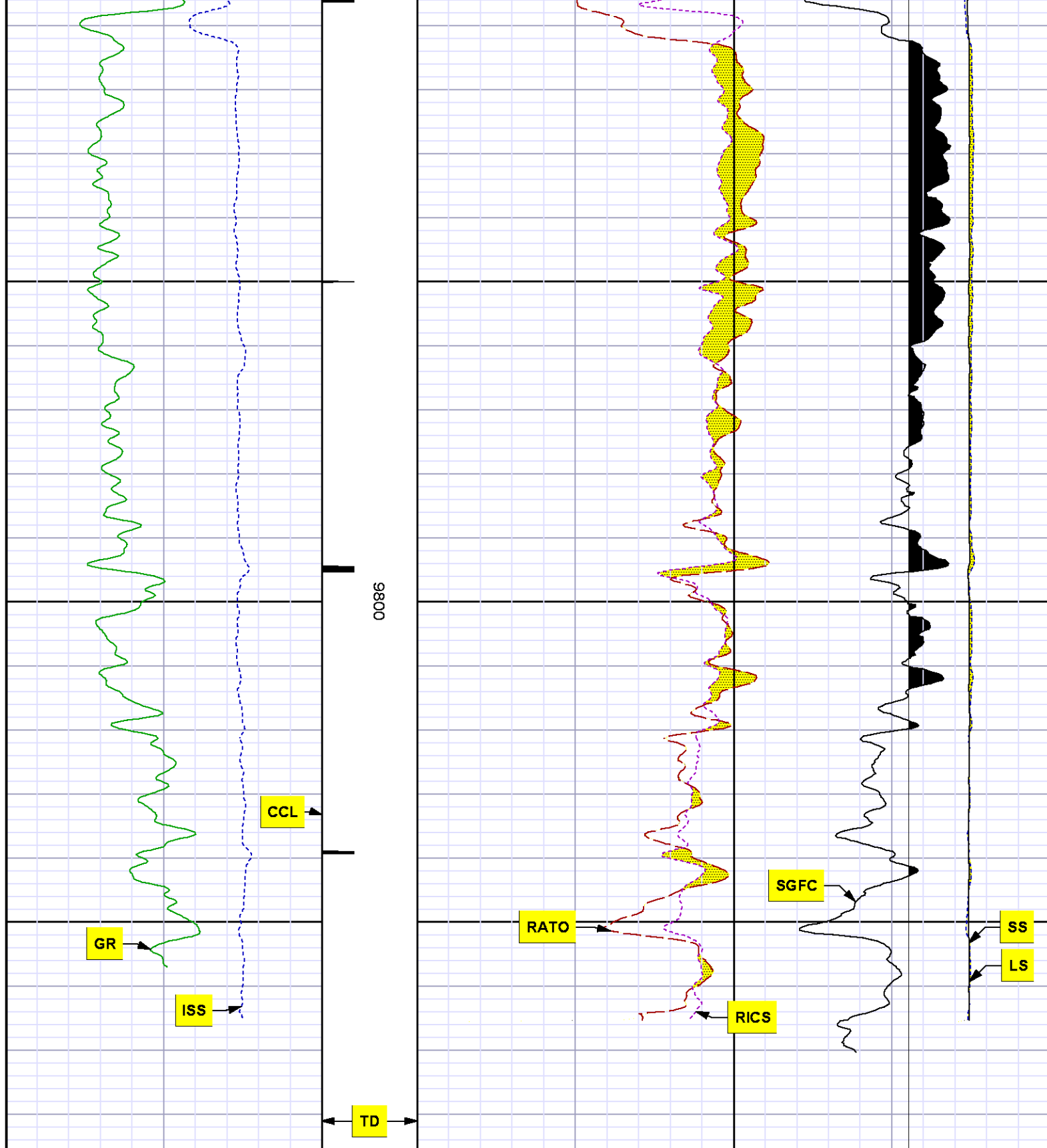


9300

9400







REPEAT SECTION PNC 3-D MODE

SPL PROCESSING

MEASUREMENT TYPE	PARAMETER	VALUE	UNITS	TOP	BOTTOM
PNC Porosity	Borehole	Cased		9060.060	9388.060
PNC Porosity	Borehole Size	8.750	inch	9060.060	9388.060
PNC Porosity	Casing Size	4.500	inch	9060.060	9388.060
PNC Porosity	Gas Filled	Non Gas Filled		9060.060	9388.060
PNC Porosity	Matrix	Sandstone		9060.060	9388.060
TPS Pressure	Temperature Corr. Source	Fixed (72.00)	degF	9060.060	9388.060

DEPTH OFFSETS

(for Acquired Curves)

SERIES	DEPTH OFFSET	ACQUIRED CURVES
8248ED	-26.519	FLTM
8248ED	-24.519	CCL CHV
2812LA	-21.969	GR
8281XA	-12.702	HVC3Q0 SEQ3 AMA3 AML3 BKX CXS CPT3Q0 CPT3Q2 CPT3Q3 CPT3Q4 ET3 IXS MCS3 MCS3Q0 QCAL3 RGN3 RICX SDA3 SDL3 SGA3 SGL3 STA3 XS ASPEC3 AMB3 AMF3 CHF3 IXSC IXSN RATO23 RICXC RIN13C RIN23 RIN23C SD3D SG3D SGB3 SGF3 WDTH3 CXSR IXSR XSR RICXR
8281XA	-12.291	HVC2Q0 SEQ2 AMA2 AMB2 AMF2 AML2 BKL CHF2 CLS CPT2Q0 CPT2Q2 CPT2Q3 CPT2Q4 ET2 ILS LS MCS2 MCS2Q0 QCAL2 RGN2 RICL RONE23 RTWO23 SDA2 SDL2 SGA2 SGB2 SGF2 SGK2 SGL2 STA2 ASPEC2 ILSC ILSN WDTH2 RICLC CLSR ILSR LSR RICLR
8281XA	-12.041	CPRS HVC1Q0 MV SEQ SEQ1 AMA1

AMB1	AME1	AMF1	AML1	BKS	CHF1
CSS	CORB	CORF	CPT1Q0	CPT1Q2	CPT1Q2A
CPT1Q2B	CPT1Q2C	CPT1Q3	CPT1Q4	CPT1Q5	ET1
G1	G2	GE1S	GE2S	ISS	MCS1
MCS1Q0	QA1	QCAL1	QM1	RATO	RATO13
RBOR	RGN1	RICS	RIN	RONE	RPOR
RTWO	RIN13	RONE13	RTWO13	SALB	SC1
SDA1	SDL1	SGA1	SGB1	SGBC	SGE1
SGF1	SGFC	SGK1	SGL1	SS	SS2
STA1	PD1S	PD2S	PD3S	MD1S	MD2S
MD3S	DG1S	DG2S	DG3S	PD1M	PD2M
PD3M	MD1M	MD2M	MD3M	DG1M	DG2M
DG3M	MVS	MA	MVM	FILV	IAM
TA	PVM	PVS	IAS	SSTAT	QPD1
QPD2	QPD3	QMD1	QMD2	QMD3	QDG1
QDG2	QDG3	QMA	QTA	QFILV	QMV
QPV	QIA	DERR	DCNT	QPK1	QSA1
PKS1	ASPEC1	H0C	FE2XC	ISSC	RINC
ISSN	RDEN	WDTH1	RICSC	CSSR	G1R
G2R	ISSR	SSR	SS2R	RATOR	RATO13R
RBORR	RICSR	RINR	RIN13R	RONER	RPORR
RTWOR					
PTFS	PTMS				
SPF1	SPFQ	TSCP	TSDP		
DTEM	TEMP	TNF			
TEN	TTEN				

8255XA	-0.792
8255XA	-0.775
8255XA	0.000
SYSTEM	0.000

Created by : RPM9, v5.3.1.0

Plotted by : PlotMgr, v5.4.504

Company : WPX ENERGY

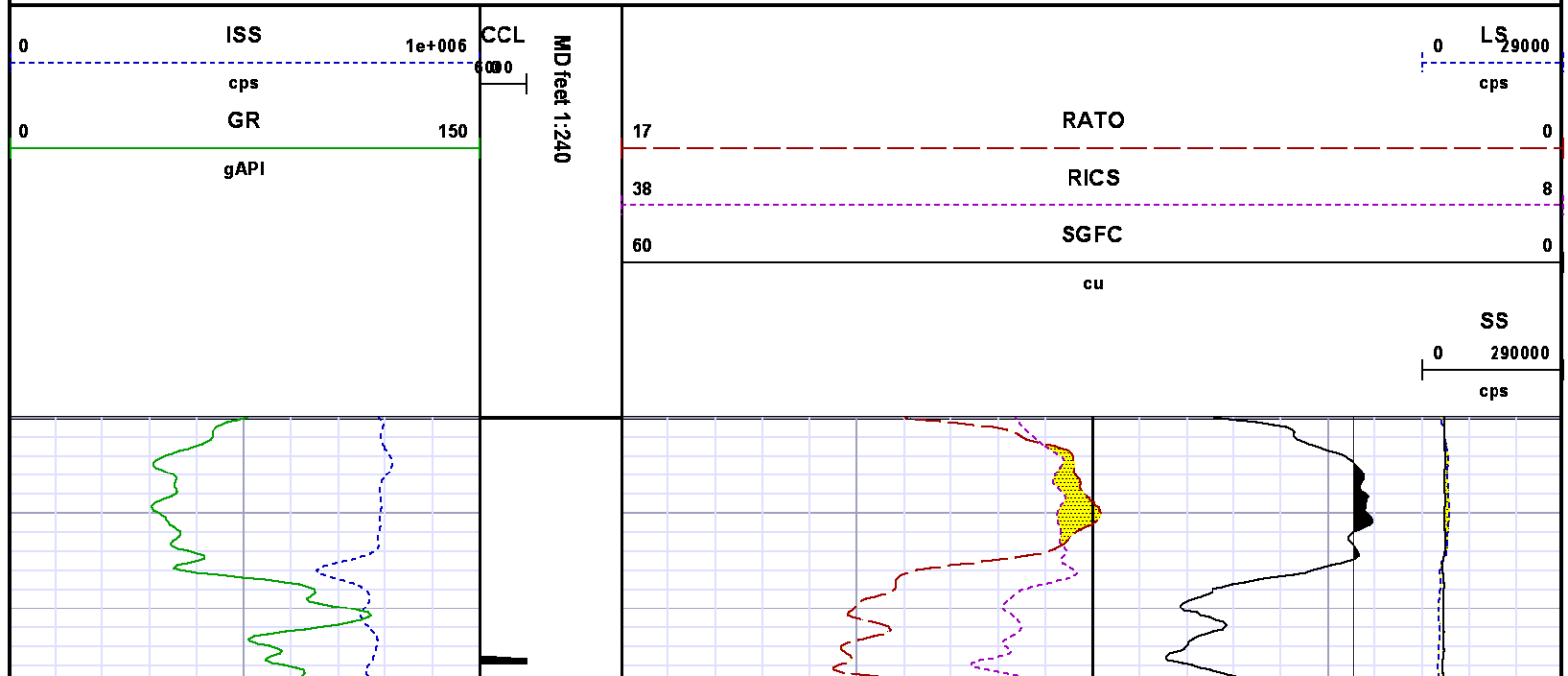
Well : AP 423-17-695

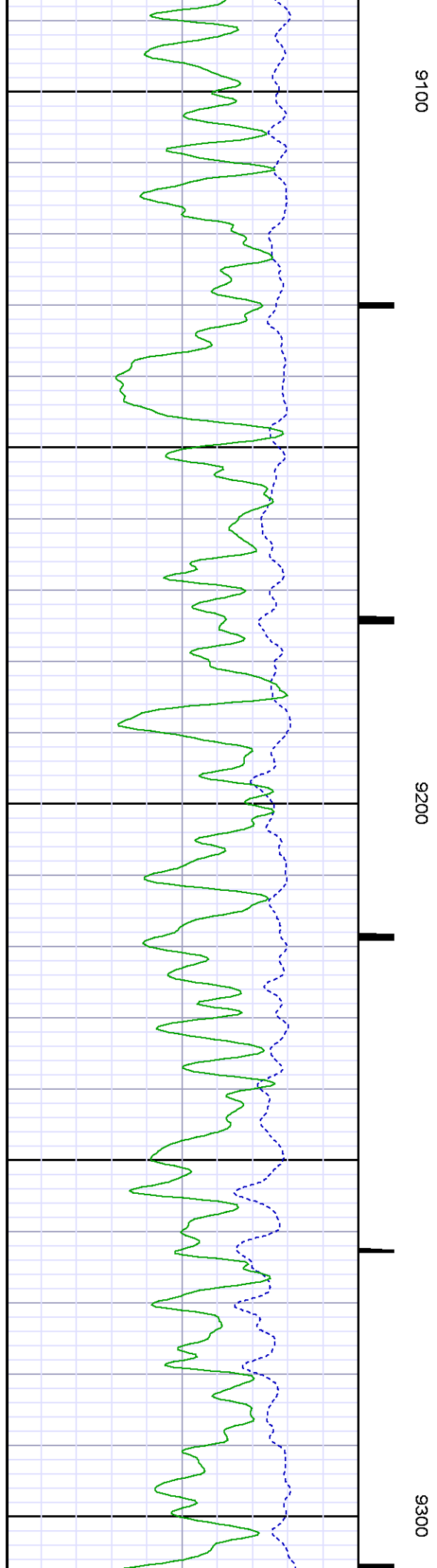
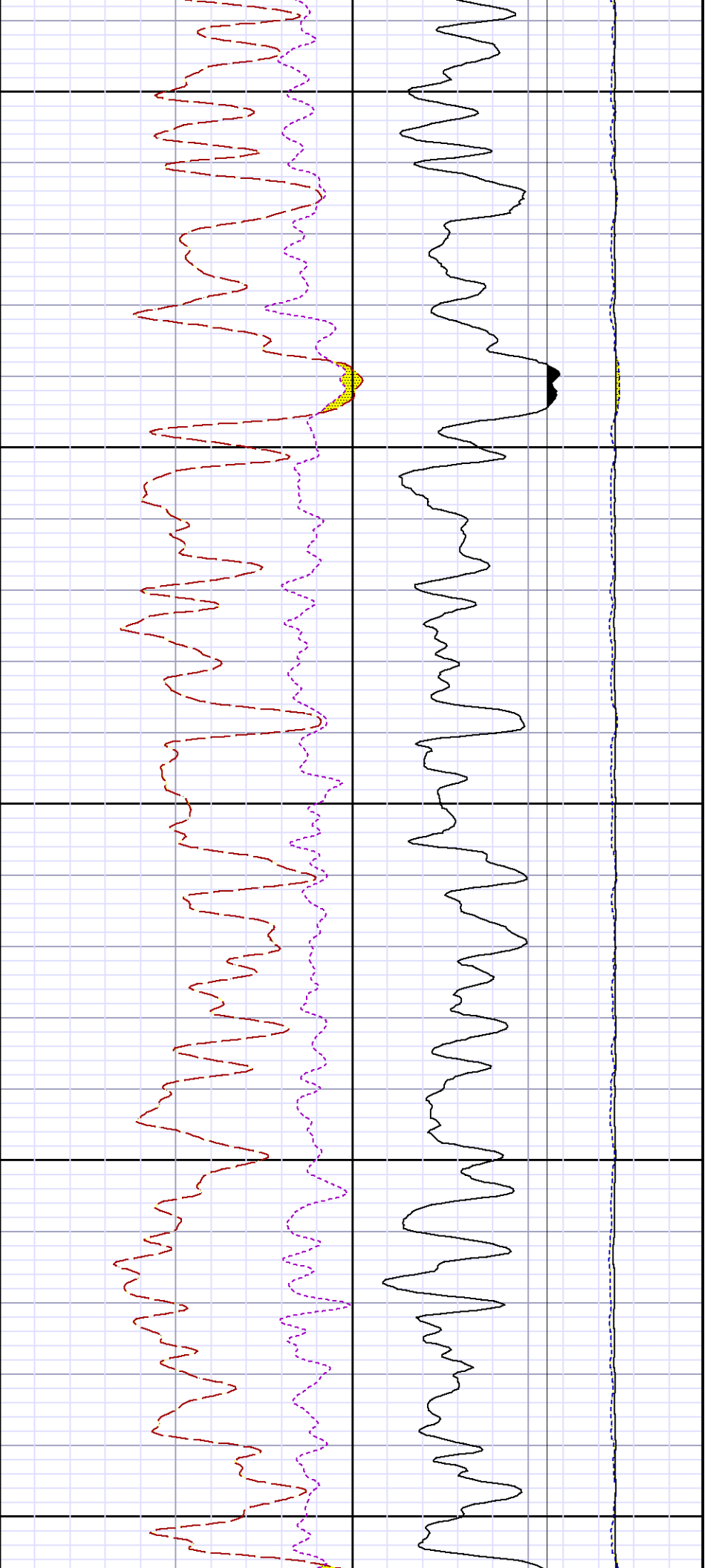
File Name : d:\well\data\wpx\ap 423-17-695\rpm423\repeat.xtf

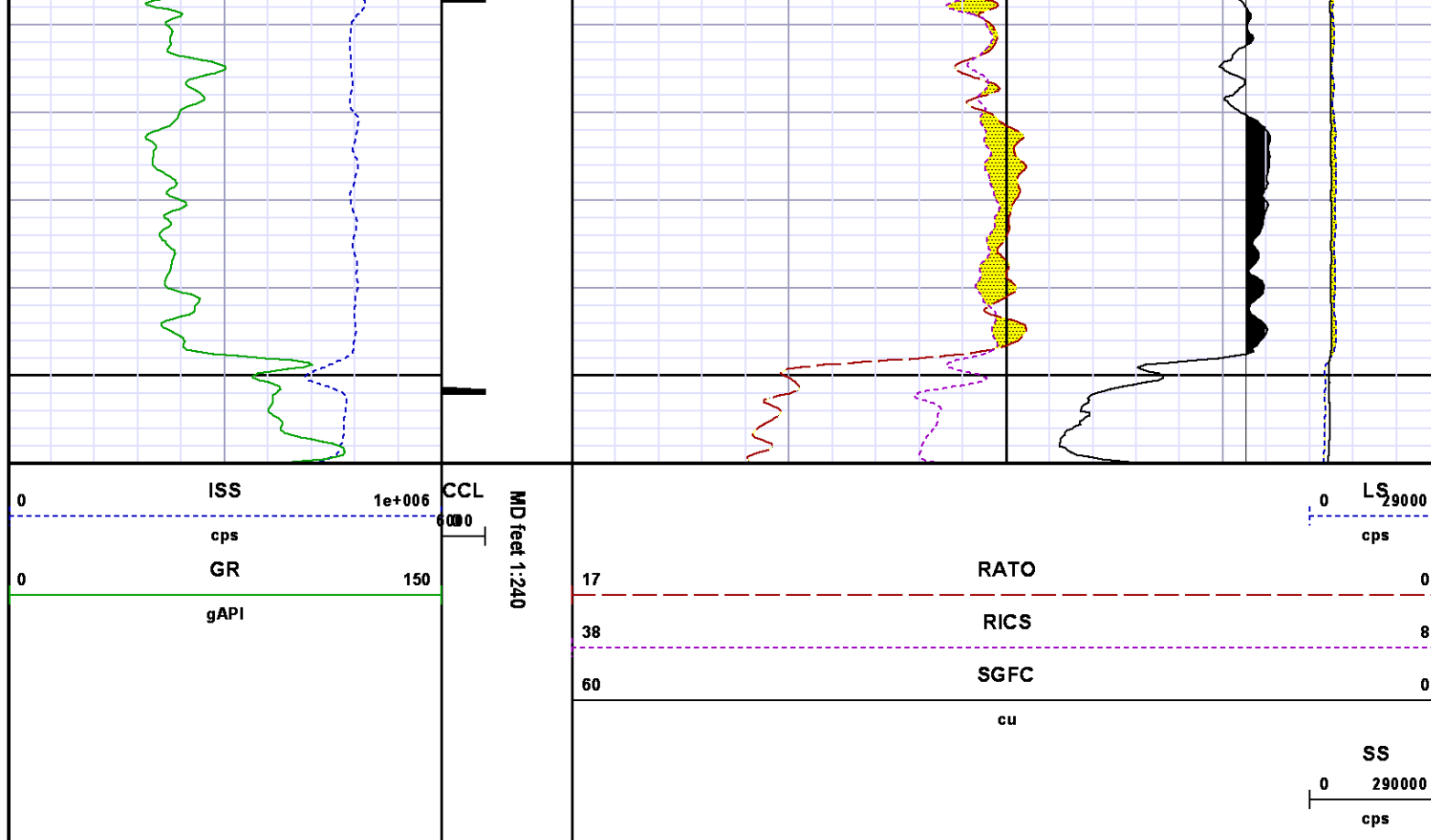
Mode : PlotMgr 5.4.504

Interval : 9060.00 - 9360.00 feet UP

Created : 10/13/2014 3:34:32 AM







CALIBRATION SUMMARY

PNC

Calibration File: C:\case\calver\PNC\555S7.cal

PNC 3D CALIBRATION SUMMARY

DATE/TIME PERFORMED: Wed Sep 17 10:41:50 2014 TOOL SERIES: 8281XA ASSET: 555 SEQ: S7

Calibrator #

GJ SHOP

Source #

8281AA 11765054

	ISS	Mtr Vits (V)	SS Gain	LS Gain	XLS Gain	EA Temp (degF)	Sync Delay (usec)	RCAL
Raw Data	810519	123.00	2328.00	2274.00	2230.00	98.97	7.00	0.9839
Interpolated	1300000	144.15	2313.58	2271.51	2227.05			

ISS

BKS

BKL

BKX

SGA1

SDA1

SGA2

SDA2

Raw Data	810519	7904.47	1481.33	242.23	25.73 25.35 26.40	0.14 0.00 0.20	24.23 23.60 24.80	0.28 0.00 0.40
	ISS	ILS	IXS	SS	SS2	LS	CSS	CLS
Raw Data	810519	169037.59	26667.59	88216.89	31442.44	8261.72	53409.88	13185.37
Fit Quality %		0.36	0.48	0.36	0.36	0.45	0.35	0.37
	ISS	RBOR	RIN ISS/ILS	RIN13 ISS/IXS	RICS ISS/CSS	RATO SS/LS	RTWO SS2/LS	RONE CSS/CLS
Raw Data	810519	1.43 1.42 1.45	4.79 3.55 5.52	30.40 22.20 32.70	15.18 10.99 16.34	10.68 10.06 11.10	3.81 3.57 3.95	4.05 3.76 4.22
Fit Quality %		0.03	0.16	0.08	0.13	0.13	0.15	0.07
Reduced	1411256	1.43 1.42 1.45	4.82 4.33 5.52	30.51 27.60 32.70	15.22 13.70 16.34	10.70 10.06 11.10	3.81 3.57 3.95	4.05 3.76 4.22

GAMMA RAY

Calibration File:		C:\case\calver\GR\382O1.cal										
CALIBRATION SUMMARY												
DATE/TIME PERFORMED:		Fri Oct 10 20:18:37 2014		TOOL SERIES:		2812LA	ASSET:		382	SEQ:		O1
Calibrator #		Background		Calibrator On		Multiplicative		Background		Calibrator On		Differential
		[cps]		[cps]				[api]		[api]		[api]
S2K WA612		67.31		273.64		1.018		68.51		278.51		210.00

Verification File:		C:\case\calver\GR\382O1.VP											
PRIMARY VERIFICATION													
DATE/TIME PERFORMED:		Fri Oct 10 20:21:02 2014		TOOL SERIES:		2812LA	ASSET:		382	SEQ:		O1	
Calibrator #		Background		Calibrator On		Multiplicative		Background		Calibrator On		Differential	
		[cps]		[cps]				[api]		[api]		[api]	
S2K WA612		64.02		275.47		1.018		65.16		280.36		215.20	

TEMPERATURE

Calibration File:		C:\case\calver\TEMP\120516AU.cal													
CALIBRATION SUMMARY															
DATE/TIME PERFORMED:		09 AUG 2010		TOOL SERIES:		8255XA		ASSET:		120516		SEQ:		AU	
T(0)		T(1)		T(2)		T(3)		T(4)		T(5)					

Coefficients	-8.673169e+000	9.576065e-002	6.395448e-006	-9.461013e-010	0.000000e+000	0.000000e+000
--------------	----------------	---------------	---------------	----------------	---------------	---------------

TOOL DIAGRAM

OTA SHORT CABLE HEAD

PCM POWER SUPPLY

Series	8250EA
Mnemonic	PCM
Diameter	1.70"
Weight	18.00 lb
Length	3.86'
Temp Rating	350.00 °F

TELEMETRY / CCL

Series	8248EA
Mnemonic	PCM
Diameter	1.70"
Weight	20.00 lb
Length	4.46'
Measure Point	1.00' CCL MP
Temp Rating	350.00 °F
Press Rating	15000.00 PSI

SONDEX GAMMA RAY

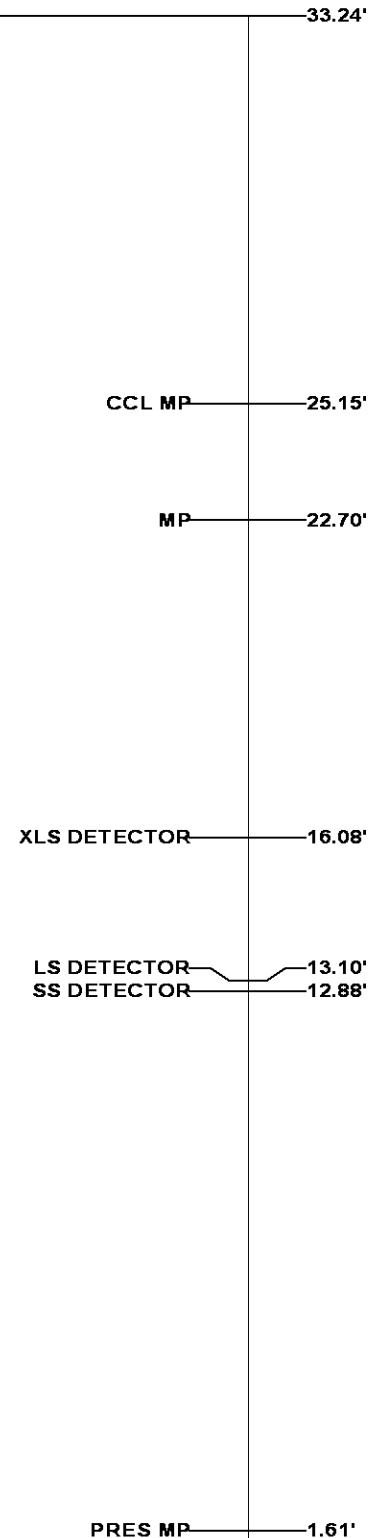
Series	2812LA
Mnemonic	SNDX
Diameter	1.69"

RESERVOIR PERFORMANCE MONITOR

Series	8281XA
Mnemonic	RPM
Diameter	1.70"
Weight	75.00 lb
Length	18.58'
Measure Point	9.49' SS DETECTOR
Measure Point	9.72' LS DETECTOR
Measure Point	12.69' XLS DETECTOR
Temp Rating	350.00 °F
Press Rating	20000.00 PSI

TEMPERATURE / PRESSURE

Series	8255XA
Mnemonic	SRPL
Diameter	1.70"
Weight	12.82 lb



Weight	13.00 lb
Length	3.30'

	0.00'
--	-------

Total Length: 33.24'
Total Weight: Not Available
Max Diameter: 0' 1.70"



Baker Atlas



<div>Company</div> <div>Well</div> <div>Field</div> <div>County</div>	WPX ENERGY				File No:	
	AP 423-17-695				CH091483	
	PARACHUTE				API No:	
	GARFIELD		State	CO	05045213920000	
<div>Location</div> <div>SHL: 18' FNL & 2485' FWL (20 6S 95W)</div> <div>BHL: 1937' FSL & 2204' FWL (17 6S 95W)</div> <div>SEC17TWP6SRGE95W</div>					<div>Elevations</div> <div>KB6935</div> <div>DF</div> <div>GL6909</div>	<div>17 6S 95W</div> <div>AP 21-20-695 PAD</div> <div>NABORS 573</div>