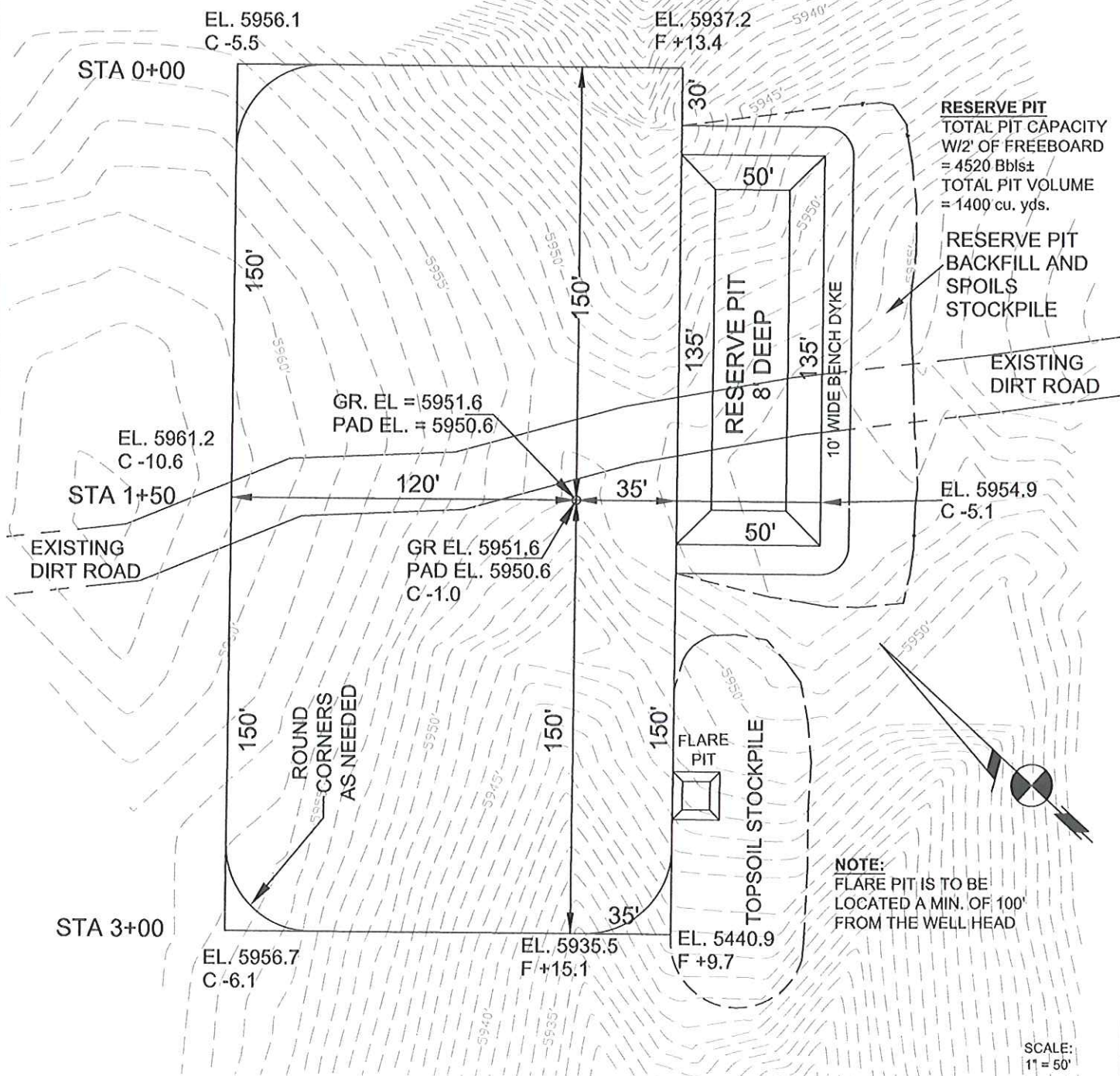


KGH OPERATING COMPANY

CONSTRUCTION LAYOUT FOR
MEAGHER #3-5
LOCATED IN RIO BLANCO COUNTY, COLORADO
SECTION 3, T1S, R104W, 6TH P.M.
822' FNL & 595' FWL



150 W. 84TH AVENUE
THORNTON, COLORADO 80260
PH. 303-702-1617
FAX. 303-702-1488
WWW.POWERSURVEYING.COM

CONSTRUCTION LAYOUT

SURVEYED BY: C. VAN MATRE
DRAWN BY: D. YOSHIDA
APPROVED BY: R. GABRIEL

REVISED:

SCALE:
1" = 50'

DATE:
4/29/14

P6

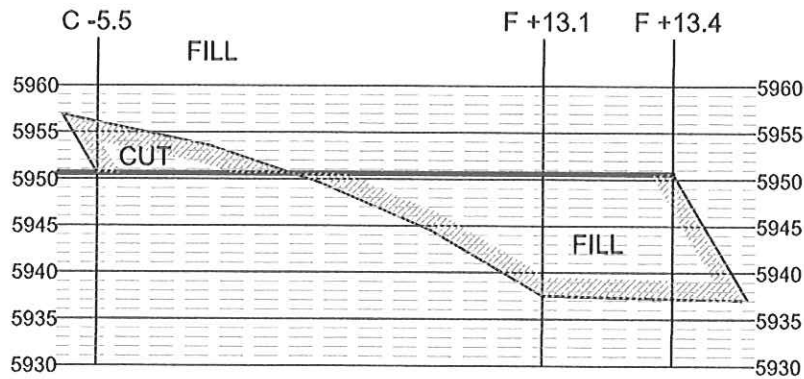
KGH OPERATING COMPANY

CONSTRUCTION LAYOUT CROSS SECTIONS FOR
MEAGHER #3-5
LOCATED IN RIO BLANCO COUNTY, COLORADO
SECTION 3, T1S, R104W, 6TH P.M.
822' FNL & 595' FWL

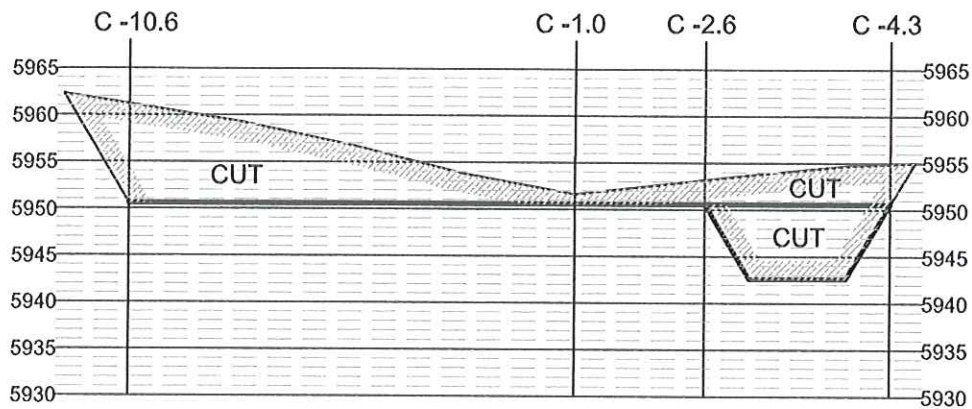
FIGURE #2

1" = 20'
CROSS
SECTION
DETAIL
1" = 50'

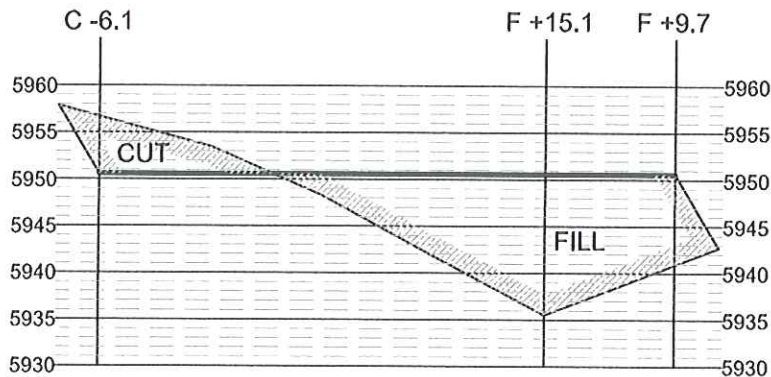
STA 0+00



STA 1+50



STA 3+00



APPROXIMATE YARDAGES

(6") TOPSOIL STRIPPING = ±1032 CU. YDS
REMAINING LOCATION = ±6325 CU. YDS.
TOTAL CUT = ±7357 CU. YDS
FILL = ±3869 CU. YDS

APPROXIMATE ACREAGES

WELL SITE DISTURBANCE = ±1.3 ACRES
ACCESS ROAD DISTURBANCE = ±0.0 ACRES
TOTAL = ±1.3 ACRES

NOTE:
TOPSOIL SHOULD
NOT BE STRIPPED
BELOW FINISHED
GRADE ON
SUBSTRUCTURE
AREA.



150 W. 84TH AVENUE
THORNTON, COLORADO 80260
PH. 303-702-1617
FAX. 303-702-1488
WWW.POWERSURVEYING.COM

PAD CROSS SECTIONS

SURVEYED BY: C. VAN MATRE
DRAWN BY: D. YOSHIDA
APPROVED BY: R. GABRIEL

REVISED:

SCALE:
HORIZ = 1" = 50'
VERT = 1" = 20'

DATE:
4/29/14

P7