

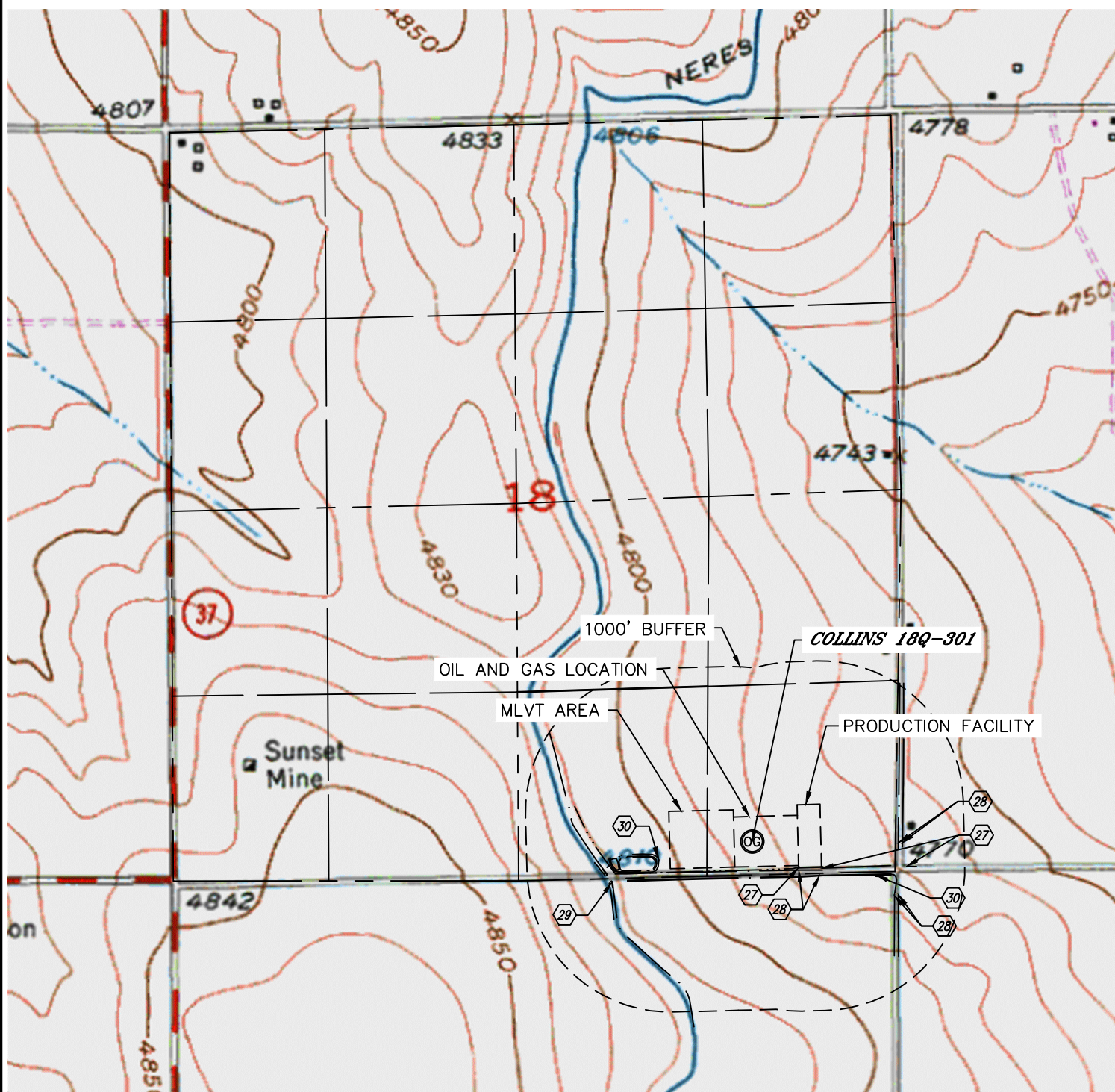


Lat40°, Inc. 1635 Foxtrail Drive, Suite 325 Loveland, CO 970-776-3321

HYDROLOGY MAP

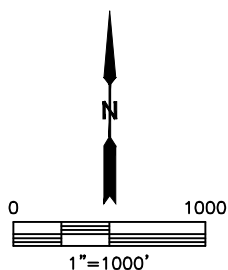
COLLINS 4N64W18T PAD

SECTION: 18
TOWNSHIP: 4N
RANGE: 64W



DISTANCES MEASURED FROM EDGE OF OIL AND GAS LOCATION

- ②⑦ DITCH 0' (INSIDE LOCATION), 7' S, 594' E
- ②⑧ BARROW DITCH 15' & 56' S, 545' & 569' SE, 549' & 579' E
- ②⑨ NERES CANAL 419' SW
- ③⑩ POND 79' W, 385' SE



NEAREST DOWN GRADIENT SURFACE WATER: DITCH 0' (INSIDE LOCATION)

DATE: 2/19/2015
PROJECT#: 2014149