

T12N, R63W, 6th P.M.

2009 Alum. Cap,
#17492, Fenceline
Lat: 40.973211°
Long: 104.447603°

285'

280'

N89°37'06"W - 5214.05' (Meas.)

FOX CREEK #508-33H

Elev. Ungraded Ground = 5479.0'

2008 Alum. Cap,
#36073 1.0' High,
E-W-S Fence Corner
Lat: 40.973125°
Long: 104.428728°

LINE TABLE

LINE	DIRECTION	LENGTH
L1	S45°29'27"E	402.13'

NOTE:
THE PROPOSED TARGET BOTTOM HOLE FOR THIS
WELL IS LOCATED IN THE NE 1/4 NE 1/4 OF
SECTION 29, T12N, R63W, 6th P.M. AT A
DISTANCE OF 600' FNL 600' FEL. IT BEARS
N09°41'11"W 4922.26' FROM THE PROPOSED WELL
HEAD.

33

N00°21'03"W - 5303.66' (Meas.)

N00°27'30"W - 5266.03' (Meas.)

2009 Alum. Cap,
0.5' Below Ground,
Fenceline
Lat: 40.958667°
Long: 104.447467°

1921 Brass Cap,
1.0' High, E-W
Fenceline
Lat: 40.958675°
Long: 104.438008°

2009 Alum. Cap,
0.5' Below Ground,
Fenceline
0.7' Below Road
Lat: 40.958681°
Long: 104.428558°

T12N
T11N

S89°57'56"W - 2612.90' (Meas.)

S89°58'10"W - 2610.69' (Meas.)

PDOP = 1.4

EOG RESOURCES, INC.

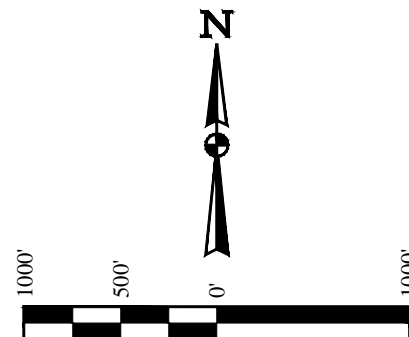
FOX CREEK #508-33H (SURFACE LOCATION)
NW 1/4 NW 1/4, SECTION 33, T12N, R63W, 6th P.M.
WELD COUNTY, COLORADO

BASIS OF BEARINGS

BASIS OF BEARINGS IS A G.P.S. OBSERVATION

BASIS OF ELEVATION

SPOT ELEVATION LOCATED AT THE NORTHEAST CORNER OF SECTION 1, T11N, R63W, 6th P.M. TAKEN FROM THE HEREFORD, QUADRANGLE, COLORADO, WELD COUNTY, 7.5 MINUTE QUAD (TOPOGRAPHIC MAP) PUBLISHED BY THE UNITED STATES DEPARTMENT OF THE INTERIOR, GEOLOGICAL SURVEY. SAID ELEVATION IS MARKED AS BEING 5352 FEET.



CERTIFICATE

THIS IS TO CERTIFY THAT THE ABOVE PLAT WAS PREPARED FROM FIELD NOTES OF ACTUAL SURVEYS MADE BY ME OR UNDER MY SUPERVISION AND THAT THE SAME ARE TRUE AND CORRECT TO THE BEST OF MY KNOWLEDGE AND BELIEF.

REGISTERED LAND SURVEYOR
REGISTRATION NO. 28285
STATE OF COLORADO 02-18-15

LEGEND:

- 90° SYMBOL
- PROPOSED WELLHEAD.
- SECTION CORNERS LOCATED.

NAD 83 (SURFACE LOCATION)
LATITUDE = 40°58'20.77" (40.972436)
LONGITUDE = 104°26'47.63" (104.446564)
NAD 27 (SURFACE LOCATION)
LATITUDE = 40°58'20.84" (40.972456)
LONGITUDE = 104°26'45.78" (104.446056)
STATE PLANE NAD 83 (COLORADO NORTH)
N: 1598841.92 E: 3290908.24
STATE PLANE NAD 27 (COLORADO NORTH)
N: 598839.54 E: 2291057.79



UELS, LLC
Corporate Office * 85 South 200 East
Vernal, UT 84078 * (435) 789-1017

SURVEYED BY: GREG WEIMER, C.J.	DATE: 02-18-15
DRAWN BY: T.B.	DATE DRAWN: 02-19-15
SCALE: 1" = 1000'	REVISED: 00-00-00

WELL LOCATION PLAT

T12N, R63W, 6th P.M.

EOG RESOURCES, INC.

FOX CREEK #508-33H (WELLBORE)
SW 1/4 SW 1/4, SECTION 28, T12N, R63W, 6th P.M.
WELD COUNTY, COLORADO

BASIS OF BEARINGS

BASIS OF BEARINGS IS A G.P.S. OBSERVATION

BASIS OF ELEVATION

SPOT ELEVATION LOCATED AT THE NORTHEAST CORNER OF SECTION 1, T11N, R63W, 6th P.M. TAKEN FROM THE HERFORD, QUADRANGLE, COLORADO, WELD COUNTY, 7.5 MINUTE QUAD (TOPOGRAPHIC MAP) PUBLISHED BY THE UNITED STATES DEPARTMENT OF THE INTERIOR, GEOLOGICAL SURVEY. SAID ELEVATION IS MARKED AS BEING 5352 FEET.

Target
Bottom
Hole

2009 Alum. Cap,
#17492
Lat: 40.987417°
Long: 104.447378°

2009 Alum. Cap,
#17492
Lat: 40.987561°
Long: 104.428600°

NOTE:
THE PROPOSED TARGET BOTTOM HOLE FOR THIS
WELL IS LOCATED IN THE NE 1/4 NE 1/4 OF
SECTION 29, T12N, R63W, 6th P.M. AT A
DISTANCE OF 600' FNL 600' FEL. IT BEARS
N09°41'11"W 4922.26' FROM THE PROPOSED WELL
HEAD.

NOTE:
THE PROPOSED TARGET BOTTOM HOLE
BEARS N09°41'11"W 4922.26' FROM THE
PROPOSED WELLHEAD WHICH IS LOCATED IN
THE NW 1/4 NW 1/4 OF SECTION 33, T12N,
R63W, 6th P.M. AT 280' FNL 285' FWL.

Set Marked Stone,
N-S Fenceline
Lat: 40.980353°
Long: 104.428711°

2008 Alum. Cap,
#36073 1.0' High,
E-W-S Fence Corner
Lat: 40.973125°
Long: 104.428728°

2009 Alum. Cap,
#17492, Fenceline
Lat: 40.973211°
Long: 104.447603°

Surface
Location

LEGEND:

- = 90° SYMBOL
- = PROPOSED WELLHEAD.
- = TARGET BOTTOM HOLE.
- ▲ = SECTION CORNERS LOCATED.

N



CERTIFICATE

THIS IS TO CERTIFY THAT THE ABOVE PLAT WAS PREPARED FROM FIELD
NOTES OF ACTUAL SURVEYS MADE BY ME OR UNDER MY SUPERVISION
AND THAT THE SAME ARE TRUE AND CORRECT TO THE BEST OF MY
KNOWLEDGE AND BELIEF.

REGISTERED LAND SURVEYOR
REGISTRATION NO. 28285
STATE OF COLORADO



UELS, LLC
Corporate Office * 85 South 200 East
Vernal, UT 84078 * (435) 789-1017

SURVEYED BY: GREG WEIMER, C.J.	DATE: 02-18-15
DRAWN BY: T.B.	DATE DRAWN: 02-19-15
SCALE: 1" = 1000'	REVISED: 00-00-00

WELL LOCATION PLAT

T12N, R63W, 6th P.M.

EOG RESOURCES, INC.

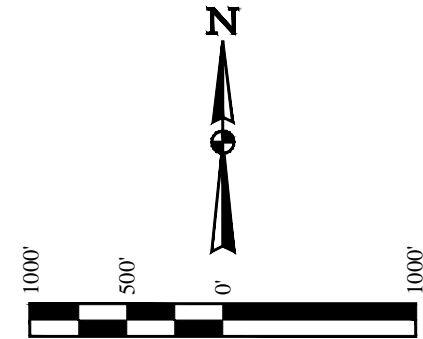
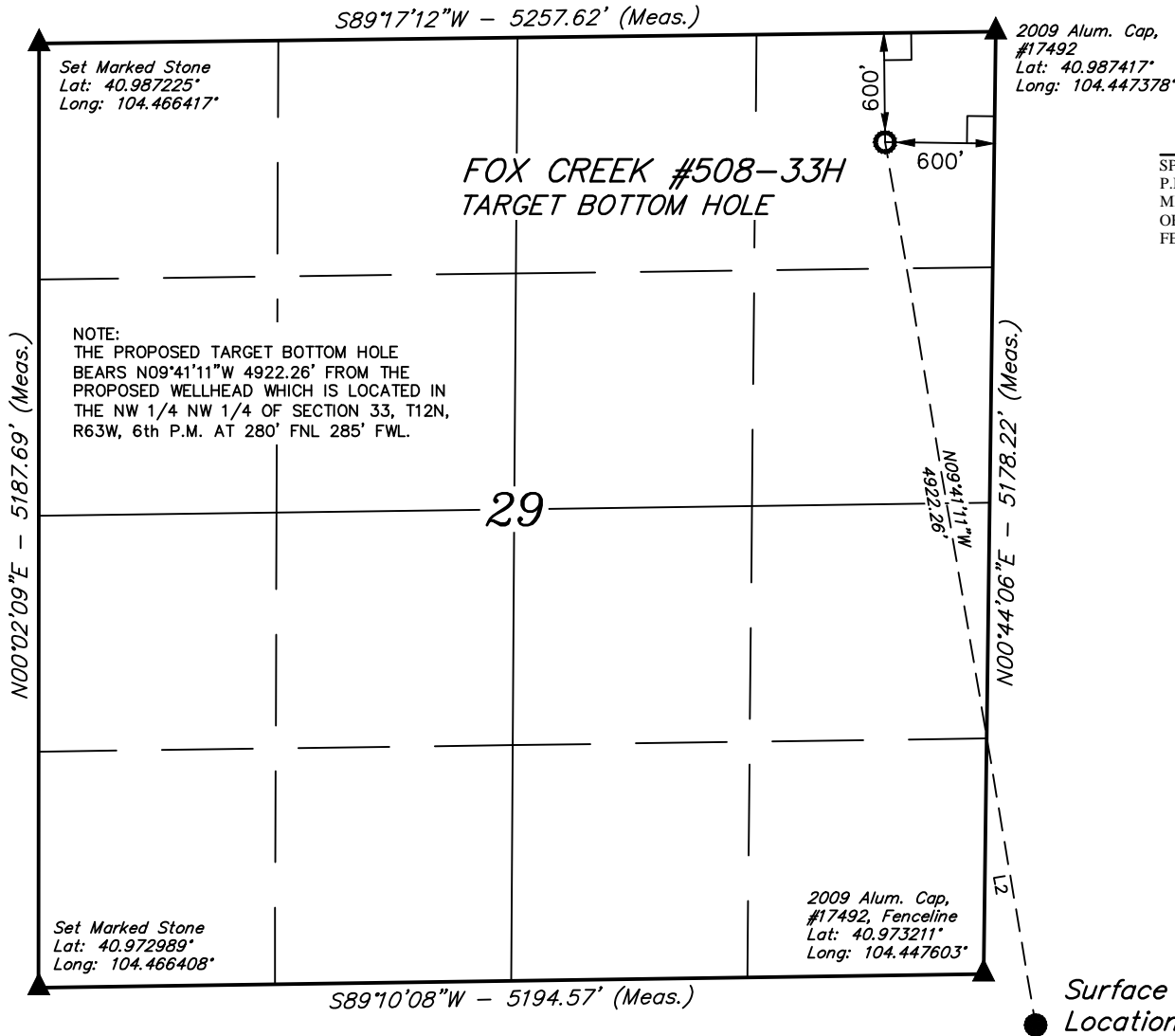
FOX CREEK #508-33H (TARGET BOTTOM HOLE)
NE 1/4 NE 1/4, SECTION 29, T12N, R63W, 6th P.M.
WELD COUNTY, COLORADO

BASIS OF BEARINGS

BASIS OF BEARINGS IS A G.P.S. OBSERVATION

BASIS OF ELEVATION

SPOT ELEVATION LOCATED AT THE NORTHEAST CORNER OF SECTION 1, T11N, R63W, 6th P.M. TAKEN FROM THE HERFORD, QUADRANGLE, COLORADO, WELD COUNTY, 7.5 MINUTE QUAD (TOPOGRAPHIC MAP) PUBLISHED BY THE UNITED STATES DEPARTMENT OF THE INTERIOR, GEOLOGICAL SURVEY. SAID ELEVATION IS MARKED AS BEING 5352 FEET.



CERTIFICATE

THIS IS TO CERTIFY THAT THE ABOVE PLAT WAS PREPARED FROM FIELD NOTES OF ACTUAL SURVEYS MADE BY ME OR UNDER MY SUPERVISION AND THAT THE SAME ARE TRUE AND CORRECT TO THE BEST OF MY KNOWLEDGE AND BELIEF.

[Signature]
REGISTERED LAND SURVEYOR
REGISTRATION NO. 28285
STATE OF COLORADO 02-18-15

LEGEND:

- └─┘ = 90° SYMBOL
- = PROPOSED WELLHEAD.
- = TARGET BOTTOM HOLE.
- ▲ = SECTION CORNERS LOCATED.

NAD 83 (TARGET BOTTOM HOLE)
LATITUDE = 40°59'08.70" (40.985750)
LONGITUDE = 104°26'58.48" (104.449578)
NAD 27 (TARGET BOTTOM HOLE)
LATITUDE = 40°59'08.76" (40.985767)
LONGITUDE = 104°26'56.63" (104.449064)
STATE PLANE NAD 83 (COLORADO NORTH)
N: 1603682.03 E: 3290018.61
STATE PLANE NAD 27 (COLORADO NORTH)
N: 603679.56 E: 2290168.19



UELS, LLC
Corporate Office * 85 South 200 East
Vernal, UT 84078 * (435) 789-1017

SURVEYED BY: GREG WEIMER, C.J.	DATE: 02-18-15
DRAWN BY: T.B.	DATE DRAWN: 02-19-15
SCALE: 1" = 1000'	REVISED: 00-00-00

WELL LOCATION PLAT