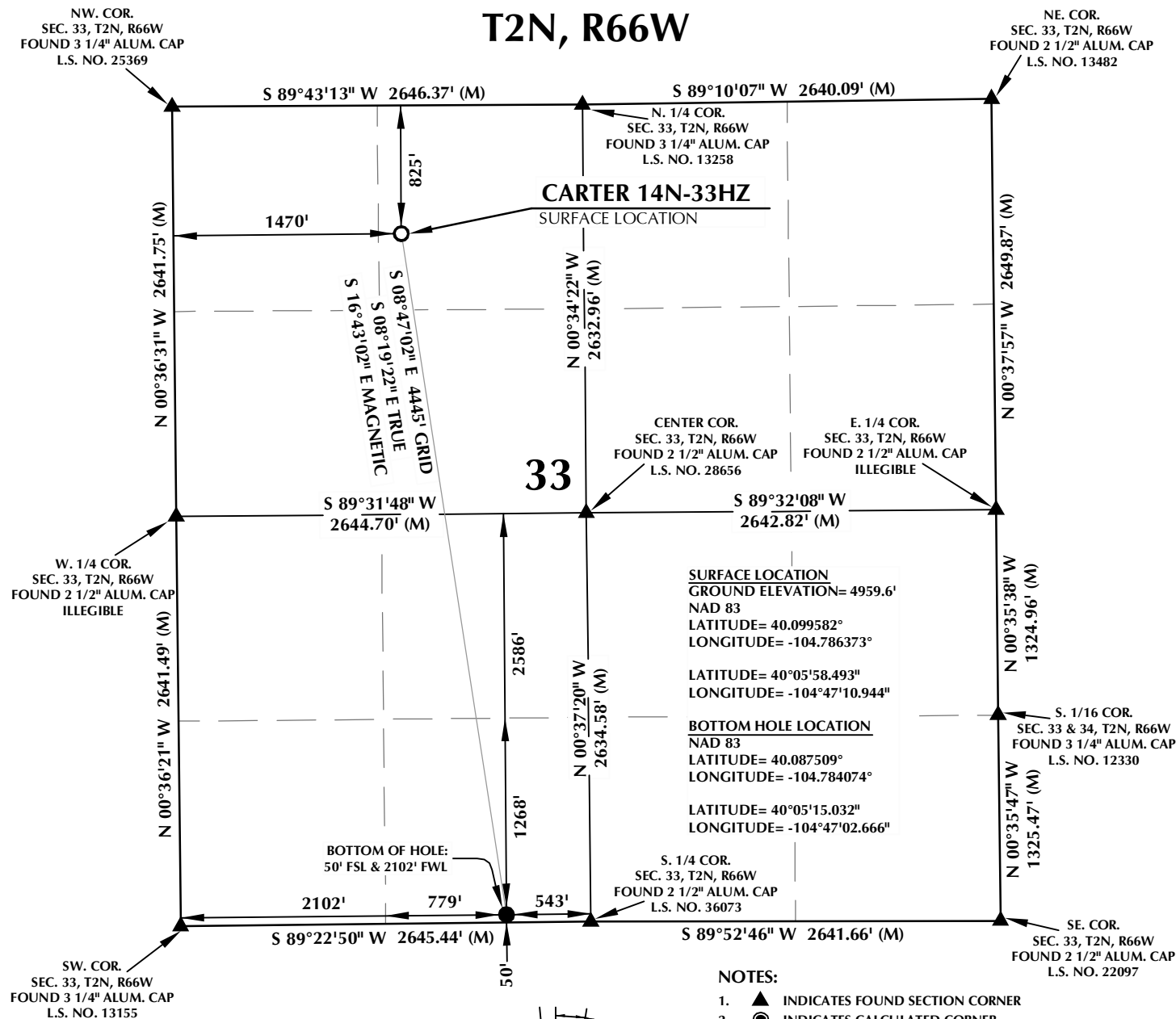


K:\AMDAR\2014\2014.77 CARTER SEC. 33, T2N, R66W\PLAT5\CARTER\_35C-33HZ.PLT.dwg, 12/29/2014 4:15:48 PM, apf

T2N, R66W



#### CERTIFICATE OF SURVEYOR:

THIS IS TO CERTIFY THAT THE ABOVE PLAT WAS PREPARED FROM FIELD NOTES OF ACTUAL SURVEY MADE BY ME OR UNDER MY SUPERVISION AND THAT THE SAME ARE TRUE AND CORRECT TO THE BEST OF MY KNOWLEDGE AND BELIEF. THIS CERTIFICATE DOES NOT REPRESENT A LAND SURVEY PLAT OR IMPROVEMENT SURVEY PLAT AS DEFINED BY C.S. 38-51-102 AND CANNOT BE RELIED UPON TO DETERMINE OWNERSHIP.

*Benjamin J. Reenders*  
BENJAMIN J. REENDERS  
PROFESSIONAL LAND SURVEYOR  
COLORADO REGISTRATION NUMBER 14306  
12/29/14

NOTICE:  
ACCORDING TO COLORADO STATE LAW YOU MUST COMMENCE ANY LEGAL ACTION BASED UPON ANY DEFECT IN THIS SURVEY WITHIN THREE YEARS AFTER YOU FIRST DISCOVER SUCH DEFECT. IN NO EVENT MAY ANY ACTION BASED UPON ANY DEFECT IN THIS SURVEY BE COMMENCED MORE THAN TEN YEARS FROM THE DATE ON THE CERTIFICATION SHOWN HEREON.

NOTE:  
MAGNETIC NORTH IS CURRENT AS OF 12/22/2014.  
MAGNETIC NORTH CHANGES WEST 0°08' PER YEAR.

#### WELL PAD - CARTER 35C-33HZ

CARTER 14N-33HZ  
WELL LOCATION CERTIFICATE  
825' FNL & 1470' FWL NENW (SURFACE)  
50' FSL & 2102' FWL SEW (BOTTOM)  
LOCATED IN SECTION 33  
T2N, R66W, 6TH P.M.  
WELD COUNTY, COLORADO

Kerr-McGee Oil &  
Gas Onshore L.P.  
1099 18th Street  
Denver, Colorado 80202



#### CONSULTING, LLC

SHERIDAN OFFICE  
2155 North Main Street  
Sheridan, Wyoming 82801  
Phone 307-674-0609



LOVELAND OFFICE  
1635 Foxtrail Drive, Suite 204  
Loveland, Colorado 80538  
Phone 970-776-4331

|               |          |                |         |
|---------------|----------|----------------|---------|
| DRAFTED BY:   | APF      | CHECKED BY:    | BJR     |
| DATE DRAFTED: | 12/29/14 | DATE SURVEYED: | 10/4/14 |
| REVISED:      |          | FILE NAME:     | 14-77   |

\\ANADARKO\2014\2014 77 CARTER SEC 33 T2N R66W\PLATS\HARDLINES\CARTER 34N-33HZ HARDLINE.dwg, 1/16/2015 9:30:36 AM, lisa



**NOTES:**

1.  INDICATES FOUND SECTION CORNER
2.  INDICATES CALCULATED CORNER
3. BEARINGS, DISTANCES, AND OFFSETS ARE BASED ON COLORADO COORDINATE SYSTEM 1983, NORTH ZONE
4. COMBINED SCALE FACTOR: .99972633
5. N / E COORDINATES ARE BASED ON UTM COORDINATE SYSTEM NAD83, ZONE 13
6. LATITUDE AND LONGITUDE COORDINATES ARE NAD83 (CORS96)(EPOCH:2002)
7. THIS EXHIBIT DOES NOT REPRESENT A LAND SURVEY PLAT OR IMPROVEMENT SURVEY PLAT AS DEFINED BY C.R.S. 38-51-102 AND CANNOT BE RELIED UPON TO DETERMINE OWNERSHIP.

**T2N, R66W, 6TH P.M.  
WELD COUNTY, COLORADO**

**Kerr-McGee Oil &  
Gas Onshore L.P.**  
1099 18th Street  
Denver, Colorado 80202



**CONSULTING, LLC**

**SHERIDAN OFFICE**  
2155 North Main Street  
Sheridan, Wyoming 82801  
Phone 307-674-0609

**LOVELAND OFFICE**  
1635 Foxtrail Drive, Suite 204  
Loveland, Colorado 80538  
Phone 970-776-4331

|                        |  |                        |   |
|------------------------|--|------------------------|---|
| DRAFTED BY: LMO        |  | CHECKED BY: BJR        | SHEET NO:<br><br><b>2</b><br><br>2 OF 3 |
| DATE DRAFTED: 12/24/14 |  | DATE SURVEYED: 10/4/14 |   |
| REVISED: 1/16/15       |  | FILE NAME: 14-77       |   |