

K:\AMDAR\2014\2014_77_CARTER_SEC_33_T2N_R66W\PLAT\35C-33HZ.PLT.dwg, 12/29/2014 4:16:17 PM, .dwg

T2N, R66W

NW. COR.
SEC. 33, T2N, R66W
FOUND 3 1/4" ALUM. CAP
L.S. NO. 25369

NE. COR.
SEC. 33, T2N, R66W
FOUND 2 1/2" ALUM. CAP
L.S. NO. 13482

S 89°43'13" W 2646.37' (M)

S 89°10'07" W 2640.09' (M)

N. 1/4 COR.
SEC. 33, T2N, R66W
FOUND 3 1/4" ALUM. CAP
L.S. NO. 13258

CARTER 14C-33HZ
SURFACE LOCATION

N 00°36'31" W 2641.75' (M)

1500'

S 12°04'08" E 4489' TRUE
S 11°36'28" E TRUE
S 20°00'08" E MAGNETIC

N 00°34'22" W
2632.96' (M)

CENTER COR.
SEC. 33, T2N, R66W
FOUND 2 1/2" ALUM. CAP
L.S. NO. 28656

E. 1/4 COR.
SEC. 33, T2N, R66W
FOUND 2 1/2" ALUM. CAP
ILLEGIBLE

N 00°37'57" W 2649.87' (M)

33

S 89°31'48" W
2644.70' (M)

S 89°32'08" W
2642.82' (M)

SURFACE LOCATION
GROUND ELEVATION= 4959.3'
NAD 83
LATITUDE= 40.099581°
LONGITUDE= -104.786266°

LATITUDE= 40°05'58.492"
LONGITUDE= -104°47'10.558"

BOTTOM HOLE LOCATION
NAD 83
LATITUDE= 40.087511°
LONGITUDE= -104.783038°

LATITUDE= 40°05'15.040"
LONGITUDE= -104°46'58.937"

BOTTOM OF HOLE:
50' FSL & 2392' FWL

2585'

N 00°37'20" W
2634.58' (M)

1268'

253'

2392'

1069'

S 89°22'50" W 2645.44' (M)

S 89°52'46" W 2641.66' (M)

50'

50'

50'

50'

50'

50'

50'

50'

50'

50'

50'

50'

50'

50'

50'

50'

50'

50'

50'

50'

50'

50'

50'

50'

50'

50'

50'

50'

50'

50'

50'

50'

50'

50'

50'

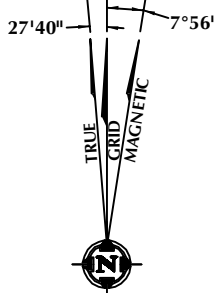
50'

50'

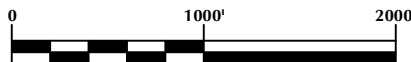
50'

NOTES:

- ▲ INDICATES FOUND SECTION CORNER
- INDICATES CALCULATED CORNER
- ELEVATION BASED ON NAVD88 (GEOID09)
- BASIS OF BEARING DERIVED FROM COLORADO COORDINATE SYSTEM 1983 NORTH ZONE UNLESS OTHERWISE NOTED.
- ALL MEASURED DISTANCES ARE GRID.
COMBINED SCALE FACTOR: .99972633
- OPERATOR: ROB WILSON / PDOP = 1.3
- SEE ADDENDUM TO WELL LOCATION CERTIFICATE FOR EXISTING IMPROVEMENTS WITHIN 500' OF THE WELL PAD.
- WELL FOOTAGES ARE MEASURED AT RIGHT ANGLES TO THE SECTION LINES.
- THE BOTTOM OF HOLE BEARS S12°04'08"E 4489' FROM THE SURFACE LOCATION.



NOTE:
MAGNETIC NORTH IS CURRENT AS OF 12/22/2014.
MAGNETIC NORTH CHANGES WEST 0°08' PER YEAR.



SCALE: 1" = 1000'

CERTIFICATE OF SURVEYOR:

THIS IS TO CERTIFY THAT THE ABOVE PLAT WAS PREPARED FROM FIELD NOTES OF ACTUAL SURVEY MADE BY ME OR UNDER MY SUPERVISION AND THAT THE SAME ARE TRUE AND CORRECT TO THE BEST OF MY KNOWLEDGE AND BELIEF. THIS CERTIFICATE DOES NOT REPRESENT A LAND SURVEY PLAT OR IMPROVEMENT SURVEY PLAT AS DEFINED BY C.S. 38-51-102 AND CANNOT BE RELIED UPON TO DETERMINE OWNERSHIP.

Benjamin J. Reenders
BENJAMIN J. REENDERS
PROFESSIONAL LAND SURVEYOR
COLORADO REGISTRATION NUMBER 14336
12/29/14

NOTICE:
ACCORDING TO COLORADO STATE LAW YOU MUST COMMENCE ANY LEGAL ACTION BASED UPON ANY DEFECT IN THIS SURVEY WITHIN THREE YEARS AFTER YOU FIRST DISCOVER SUCH DEFECT. IN NO EVENT MAY ANY ACTION BASED UPON ANY DEFECT IN THIS SURVEY BE COMMENCED MORE THAN TEN YEARS FROM THE DATE ON THE CERTIFICATION SHOWN HEREON.

WELL PAD - CARTER 35C-33HZ

CARTER 14C-33HZ
WELL LOCATION CERTIFICATE
825' FNL & 1500' FWL NENW (SURFACE)
50' FSL & 2392' FWL SEW (BOTTOM)
LOCATED IN SECTION 33
T2N, R66W, 6TH P.M.
WELD COUNTY, COLORADO

Kerr-McGee Oil &
Gas Onshore L.P.

1099 18th Street
Denver, Colorado 80202



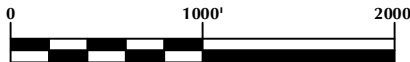
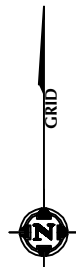
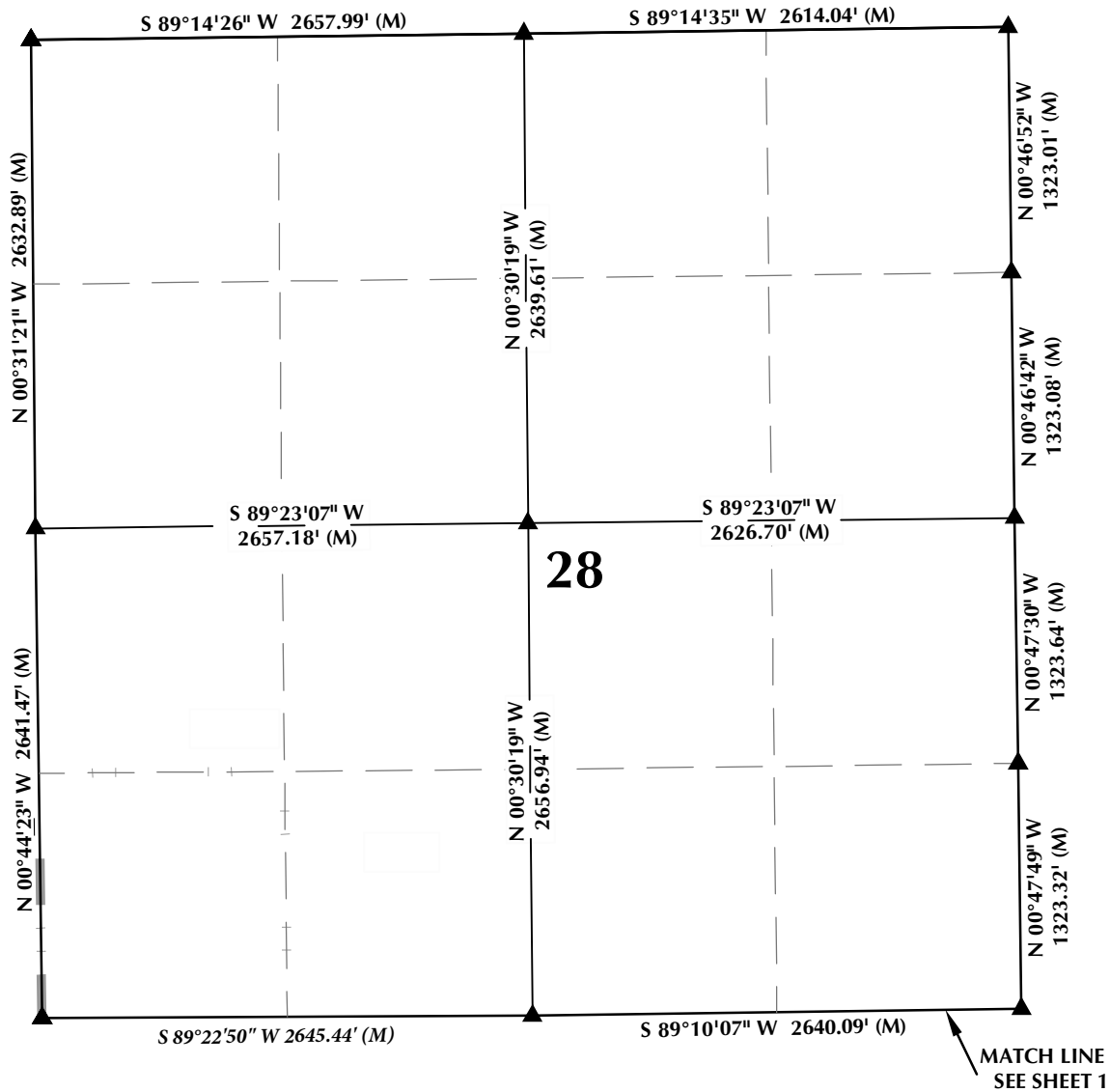
CONSULTING, LLC

SHERIDAN OFFICE
2155 North Main Street
Sheridan, Wyoming 82801
Phone 307-674-0609

LOVELAND OFFICE
1635 Foxtrail Drive, Suite 204
Loveland, Colorado 80538
Phone 970-776-4331

DRAFTED BY:	APF	CHECKED BY:	BJR
DATE DRAFTED:	12/29/14	DATE SURVEYED:	10/4/14
REVISED:		FILE NAME:	14-77

T2N, R66W



SCALE: 1" = 1000'

NOTES:

- ▲ INDICATES FOUND SECTION CORNER
- INDICATES CALCULATED CORNER
- BEARINGS, DISTANCES, AND OFFSETS ARE BASED ON COLORADO COORDINATE SYSTEM 1983, NORTH ZONE
- COMBINED SCALE FACTOR: .99972633
- N / E COORDINATES ARE BASED ON UTM COORDINATE SYSTEM NAD83, ZONE 13
- LATITUDE AND LONGITUDE COORDINATES ARE NAD83 (CORS96)(EPOCH:2002)
- THIS EXHIBIT DOES NOT REPRESENT A LAND SURVEY PLAT OR IMPROVEMENT SURVEY PLAT AS DEFINED BY C.R.S. 38-51-102 AND CANNOT BE RELIED UPON TO DETERMINE OWNERSHIP.

WELL PAD - CARTER 35C-33HZ

T2N, R66W, 6TH P.M.
WELD COUNTY, COLORADO

**Kerr-McGee Oil &
Gas Onshore L.P.**
1099 18th Street
Denver, Colorado 80202



CONSULTING, LLC

SHERIDAN OFFICE
2155 North Main Street
Sheridan, Wyoming 82801
Phone 307-674-0609

LOVELAND OFFICE
1635 Foxtrail Drive, Suite 204
Loveland, Colorado 80538
Phone 970-776-4331

DRAFTED BY:	LMO	CHECKED BY:	BJR	SHEET NO:
DATE DRAFTED:	12/24/14	DATE SURVEYED:	10/4/14	2
REVISED:	1/16/15	FILE NAME:	14-77	2 OF 3