



**RADIAL
SECTOR BOND LOG
WITH GAMMA RAY**

Pioneer Energy Services

Company Kerr-McGee Oil & Gas Onshore LP

Well Devon 38-8
Field Wattenberg
County Weld State Colo.

Company **Kerr-McGee Oil & Gas Onshore LP**
Well **Devon 38-8**
Field **Wattenberg**
County **Weld** State **Colo.**

Location: API # : 05123242570000 Other Services
SHL: 716' FSL & 622' FEL
BHL: 50' FSL & 50' FEL
SEC 8 TWP 3n RGE 66w
Permanent Datum GL Elevation 4890
Log Measured From KB
Drilling Measured From KB
K.B. 4902
D.F. NA
G.L. 4890

Date of Service	2-17-15		
Run Number	1		
Depth Driller or PBTD	8109		
Depth Logger	4012'		
Bottom Log Interval	4000'		
Top Log Interval	SURFACE		
Open Hole Size	7.875		
Type Fluid	WATER		
Fluid Level	120'		
Fluid Density	NA		
Max. Recorded Temperature	170		
Max. Wellhead Pressure	0		
Wellhead Connection	5K BOP		
Estimated Cement Top	3506'		
Unit Number	132		
Wireline Size	9/32"		
Location	FT. MORGAN		
Recorded By	N.BIVENS		
Witnessed By	Nick Lang		
	Size	WMFt	Top
Tubing Record			Bottom
Surface Casing			
Production Casing	4.5"	11.6	surface
Liner Record			8109'

<<< Fold Here >>>

All interpretations are opinions based on inferences from electrical or other measurements and Pioneer Wireline Services, LLC cannot and does not guarantee the accuracy or correctness of any interpretation, and Pioneer Wireline Services, LLC will not be liable or responsible for any loss, costs, damages, or expenses incurred or sustained by anyone resulting from any interpretation made by any of our officers, agents or employees.


Comments

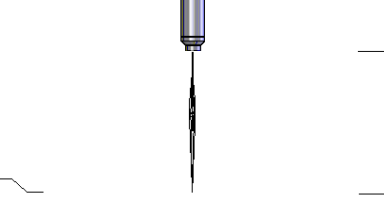
N/A DENOTES NOT AVAILABLE OR NON-APPLICABLE.
s.o. # 2-220118

THANK YOU FOR USING PIONEER Energy SERVICES

Your Pioneer Energy Services Crew	Tool Data - Services	Serial Number
Engineer: Operator: Operator: Operator:		

		Company	Kerr-McGee Oil & Gas Onshore LP
		Well	Devon 38-8
		Field	Wattenberg
		County	Weld
		State	Colo.

Sensor	Offset (ft)	Schematic	Description	Len (ft)	OD (in)	Wt (lb)
			PTS275	2.83	2.75	
WVF3FT	13.18		RBT-Probe (4.5040904) Prototype Probe Radii Bond Tool with Digital Telemetry	8.88	2.75	90.00
WVFCAL	13.18					
WVFS1	13.18					
WVFS2	13.18					
WVFS3	13.18					
WVFS4	13.18					
WVFS5	13.18					
WVFS6	13.18					
WVFS7	13.18					
WVFS8	13.18					
WVF5FT	12.18					
			PTS275	2.83	2.75	
CCL	5.18					
GR	3.85		GR-Probe275 (030606)	4.54	2.75	57.00

TEMP	0.01		TEMP-Probe (P071024) Probe temp tool	1.55	1.69	5.00
Dataset: 05123242570000_devon_38_8_rbl.db: field/well/run1/pass1 Total Length: 20.63 ft Total Weight: 152.00 lb O.D. 2.75 in						

		Calibration Report
Database File:	05123242570000_devon_38_8_rbl.db	
Dataset Pathname:	pass2	
Dataset Creation:	Tue Feb 17 09:38:30 2015 by Log 7.0 B1	

Temperature Calibration Report				
Serial Number:	P071024			
Tool Model:	Probe			
Performed:	Mon Jan 19 07:10:38 2015			
	Reference		Reading	
Low Reference:	56.00	degF	596.24	cps
High Reference:	100.00	degF	1200.00	cps
Gain:	0.10			
Offset:	10.96			
Delta Spacing	1			

Gamma Ray Calibration Report		
Serial Number:	030606	
Tool Model:	Probe275	
Performed:	Thu Jul 03 10:46:52 2014	
Calibrator Value:	138.0	GAPI
Background Reading:	35.9	cps
Calibrator Reading:	244.8	cps
Sensitivity:	0.7607	GAPI/cps

Segmented Cement Bond Log Calibration Report		
Serial Number:	4.5040904	
Tool Model:	Probe	
Calibration Casing Diameter:	4.500	in
Calibration Depth:	2178.817	ft

Master Calibration, performed Tue Feb 17 09:38:17 2015:						
	Raw (v)		Calibrated (mv)		Results	
	Zero	Cal	Zero	Cal	Gain	Offset
3'	0.000	0.804	1.000	81.196	99.749	1.000
CAL	0.000	0.660				
5'	0.000	0.529	1.000	81.196	151.609	1.000
SUM						
S1	0.000	0.701	0.000	95.000	135.551	0.000
S2	0.000	0.797	0.000	95.000	119.236	0.000
S3	0.000	0.894	0.000	95.000	106.300	0.000
S4	0.000	0.991	0.000	95.000	93.271	0.000

S4	0.000	0.929	0.000	95.000	102.271	0.000
S5	0.000	0.935	0.000	95.000	101.648	0.000
S6	0.000	0.906	0.000	95.000	104.826	0.000
S7	0.000	0.805	0.000	95.000	118.048	0.000
S8	0.000	0.706	0.000	95.000	134.655	0.000

Internal Reference Calibration, performed Wed Dec 31 17:00:00 1969:

	Raw (v)		Calibrated (v)		Results	
	Zero	Cal	Zero	Cal	Gain	Offset
CAL	0.000	0.000	0.000	0.660	1.000	0.000

Air Zero Calibration, performed Tue Jan 27 10:16:17 2015:

	Raw (v)		Calibrated (v)		Results	
	Zero		Zero		Offset	
3'	0.000		0.000		0.000	
5'	0.000		0.000		0.000	
SUM						
S1	0.000		0.000		0.000	
S2	0.000		0.000		0.000	
S3	0.000		0.000		0.000	
S4	0.000		0.000		0.000	
S5	0.000		0.000		0.000	
S6	0.000		0.000		0.000	
S7	0.000		0.000		0.000	
S8	0.000		0.000		0.000	

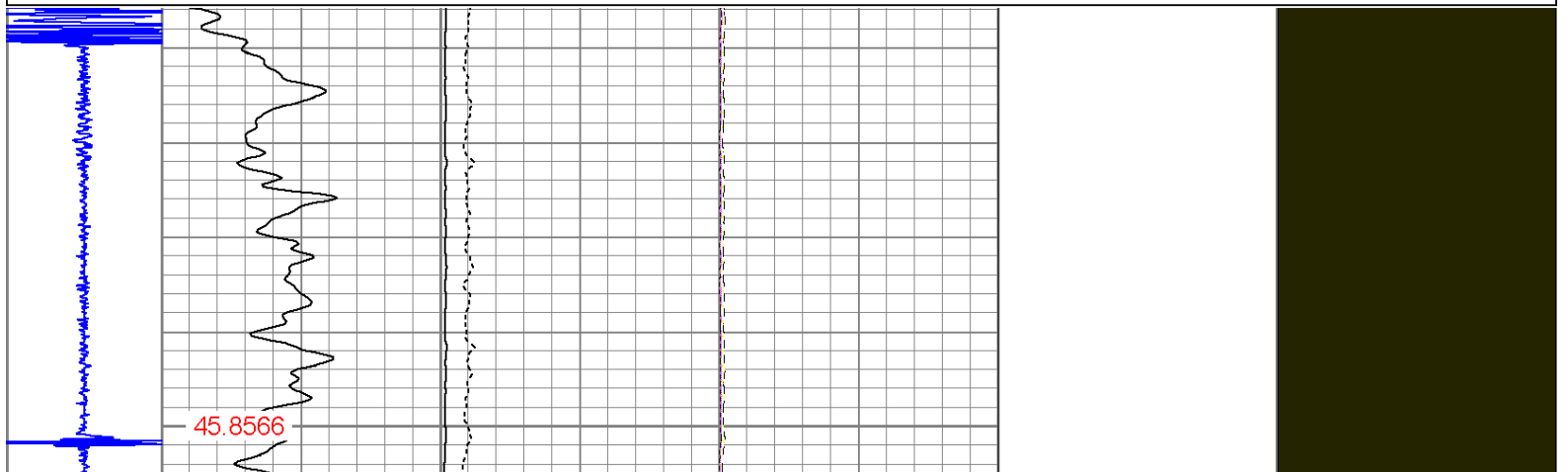


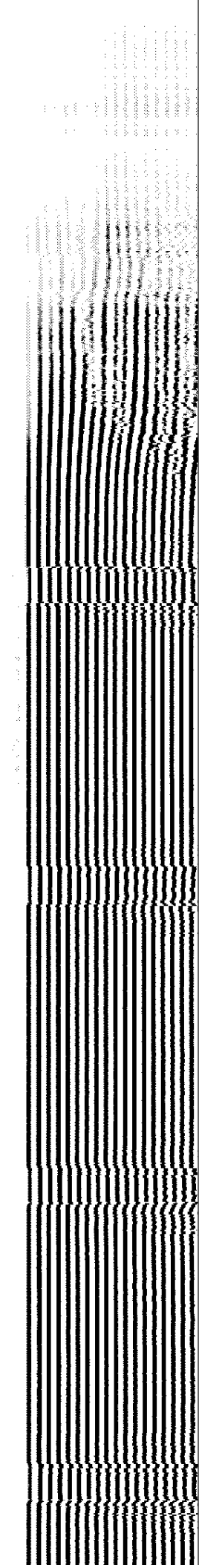
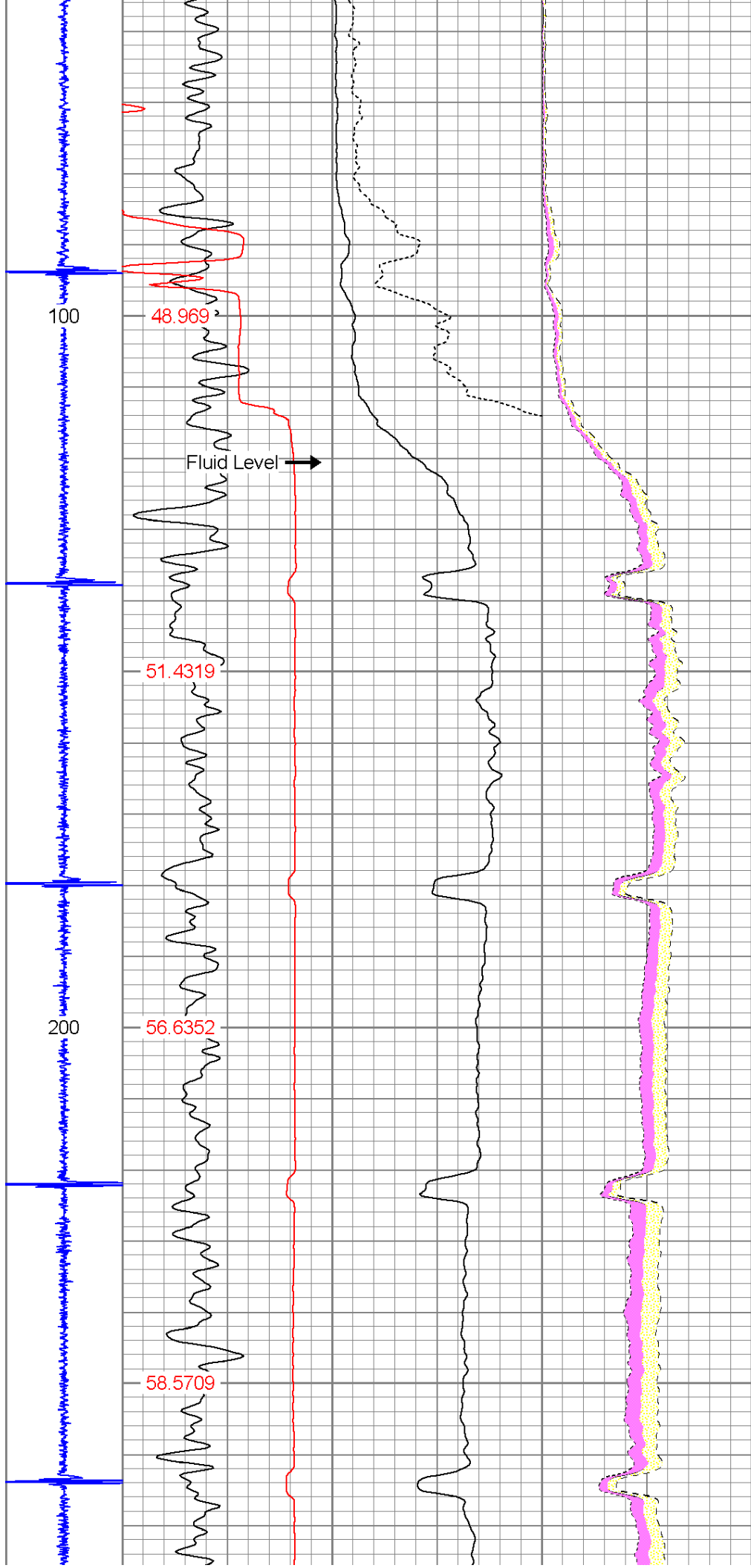
Pioneer Energy Services

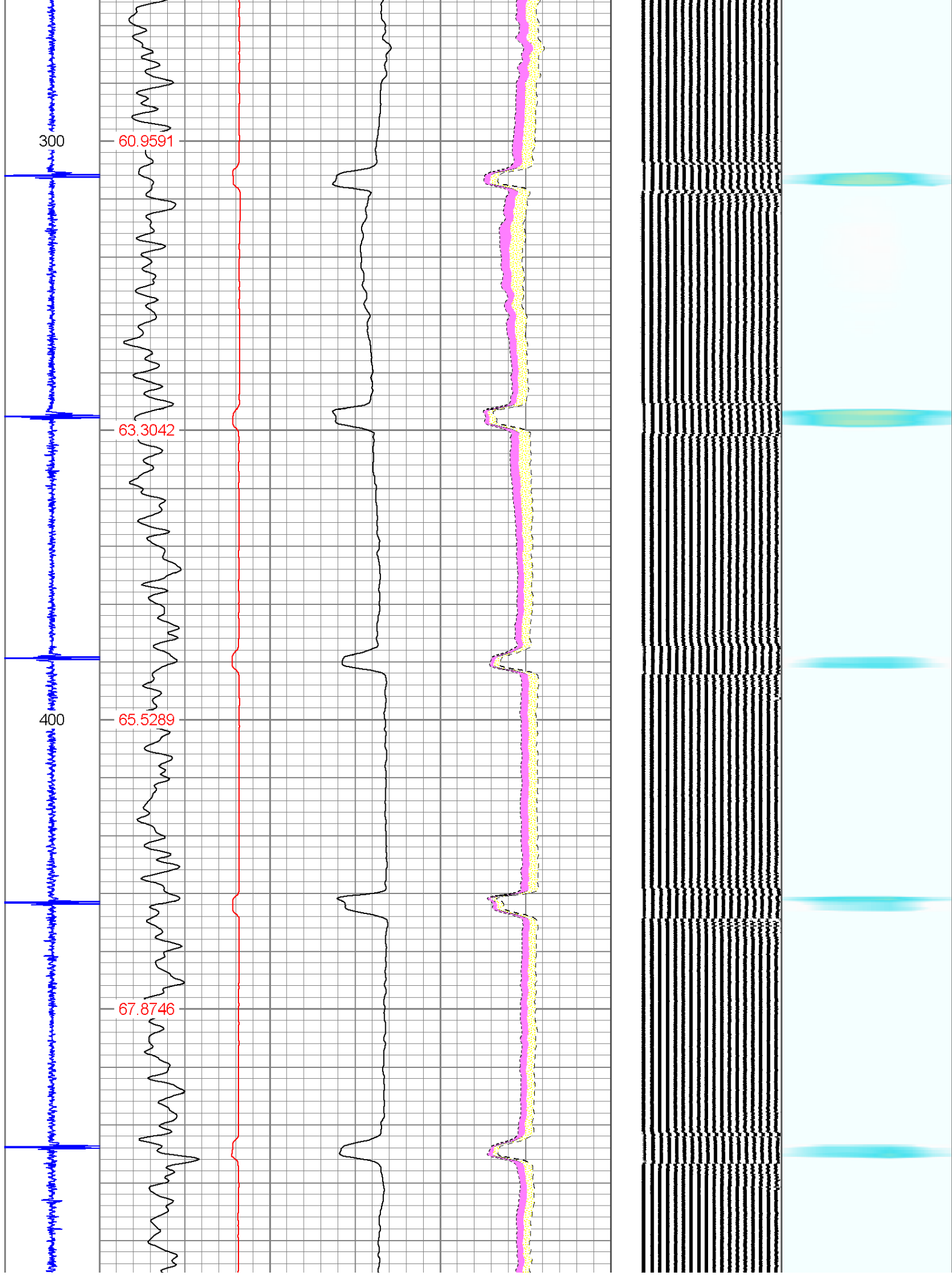
Main Pass

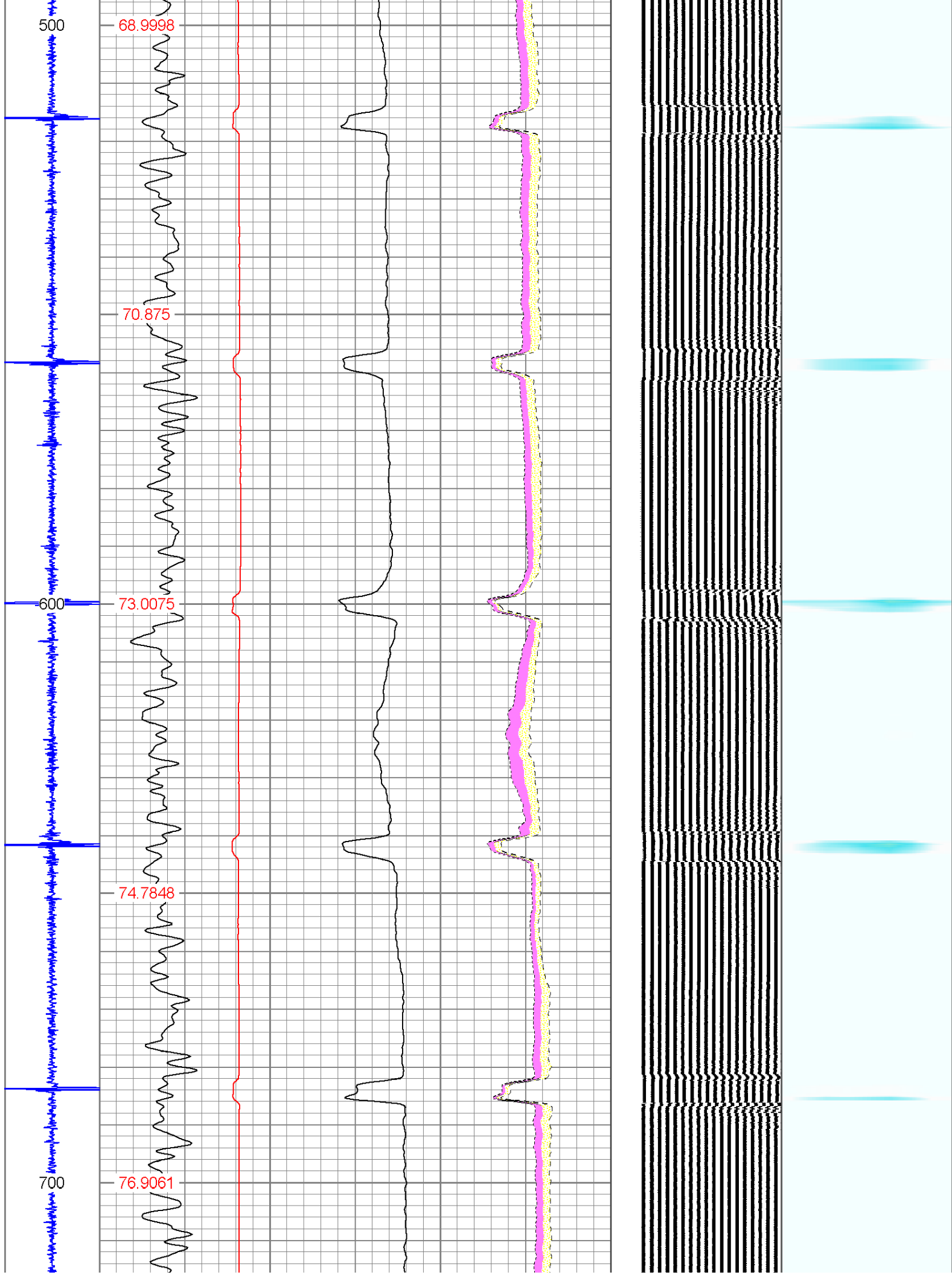
Database File: 05123242570000_devon_38_8_rbl.db
Dataset Pathname: pass2
Presentation Format: scbl02
Dataset Creation: Tue Feb 17 09:38:30 2015 by Log 7.0 B1
Charted by: Depth in Feet scaled 1:240

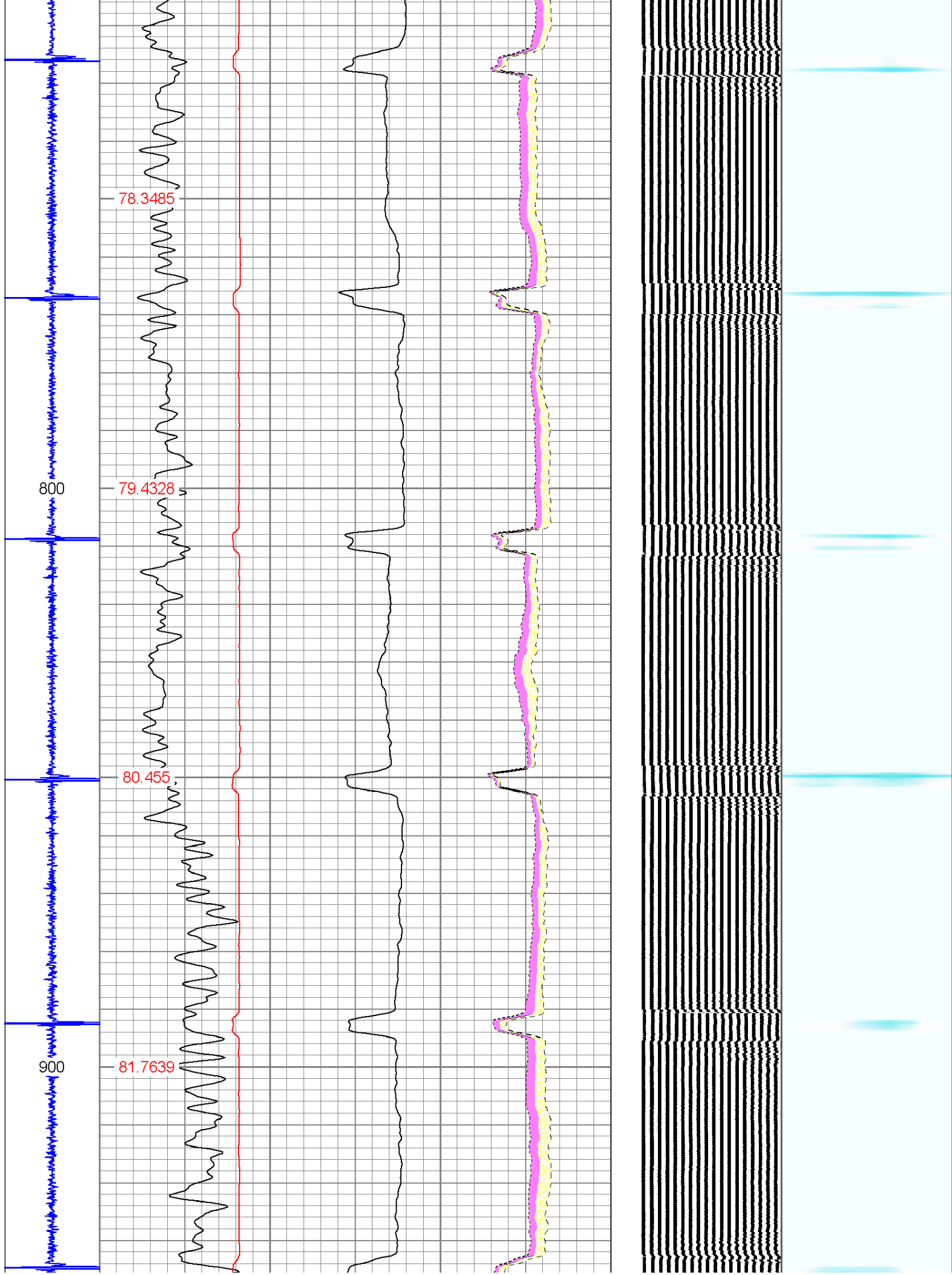
5	CCL	-5	0	GR (GAPI)	150	0	AMP (mV)	100	0	AMPAVG	150	200	VDL	1200	1	SECTOR MAP	8
				400 TT3FT (usec)	200	0	AMPx5 (mV)	20	0	AMPMAX	150				10		60
				TEMP					0	AMPMIN	150						
				(degF)													

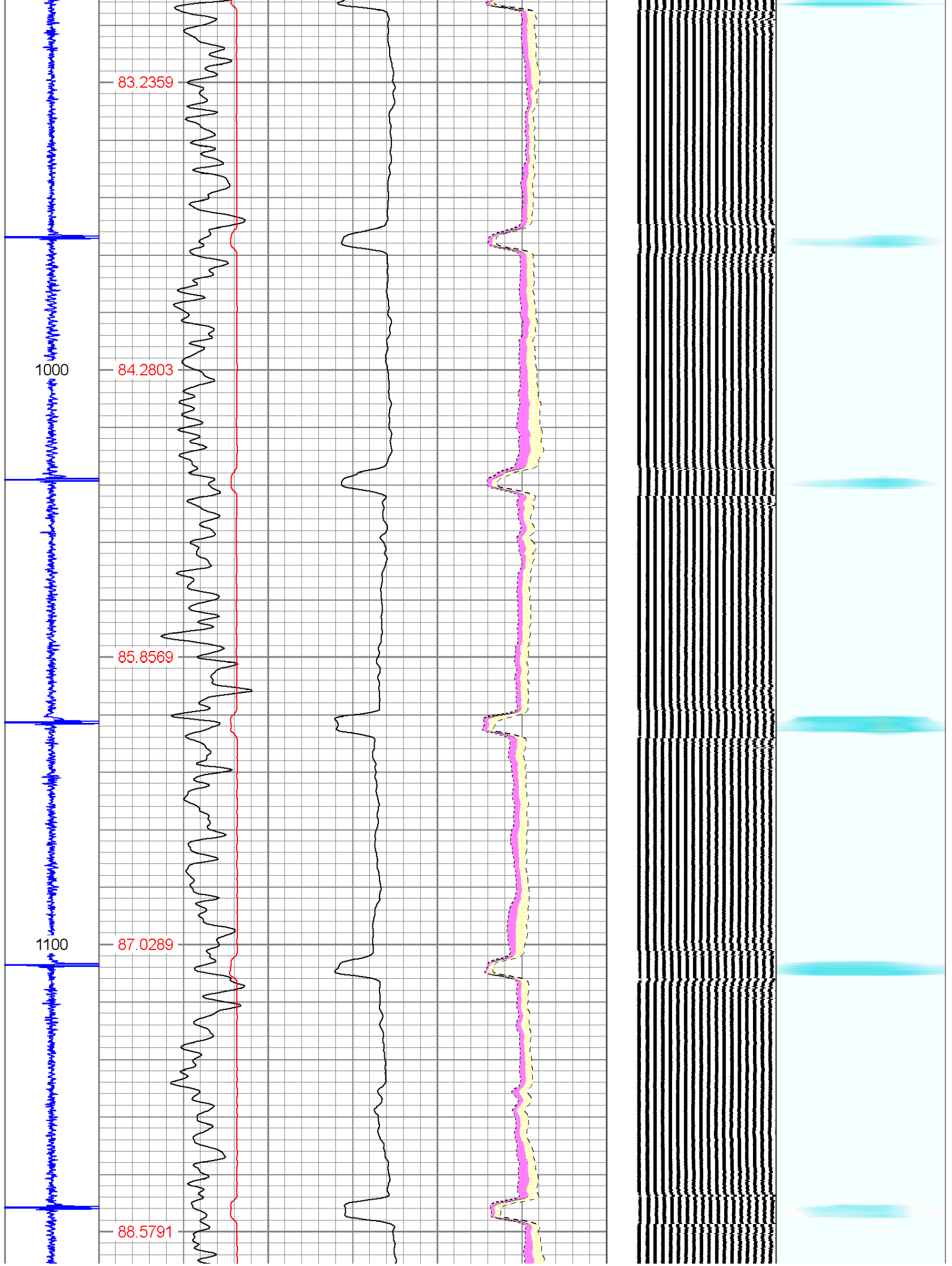


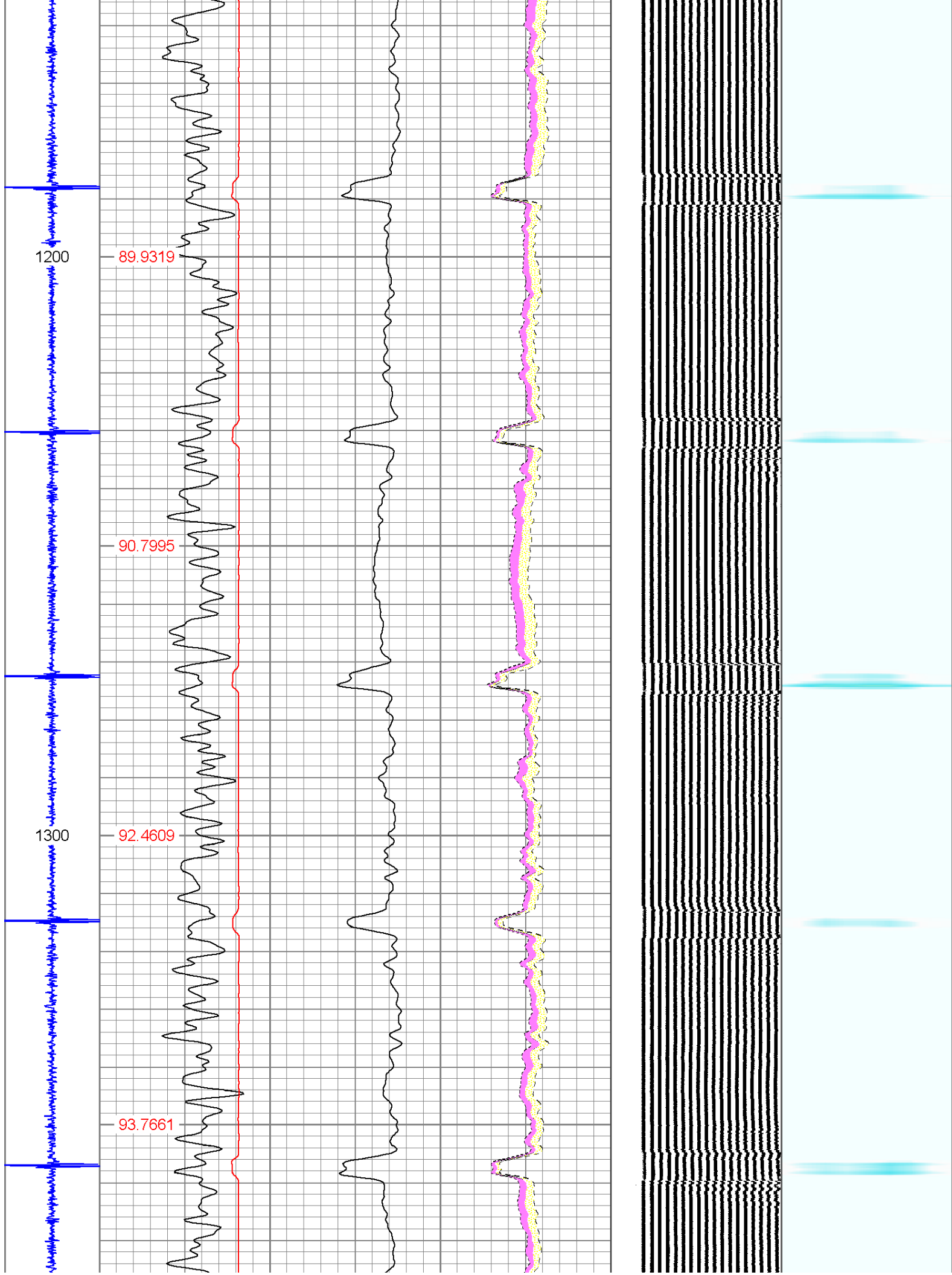


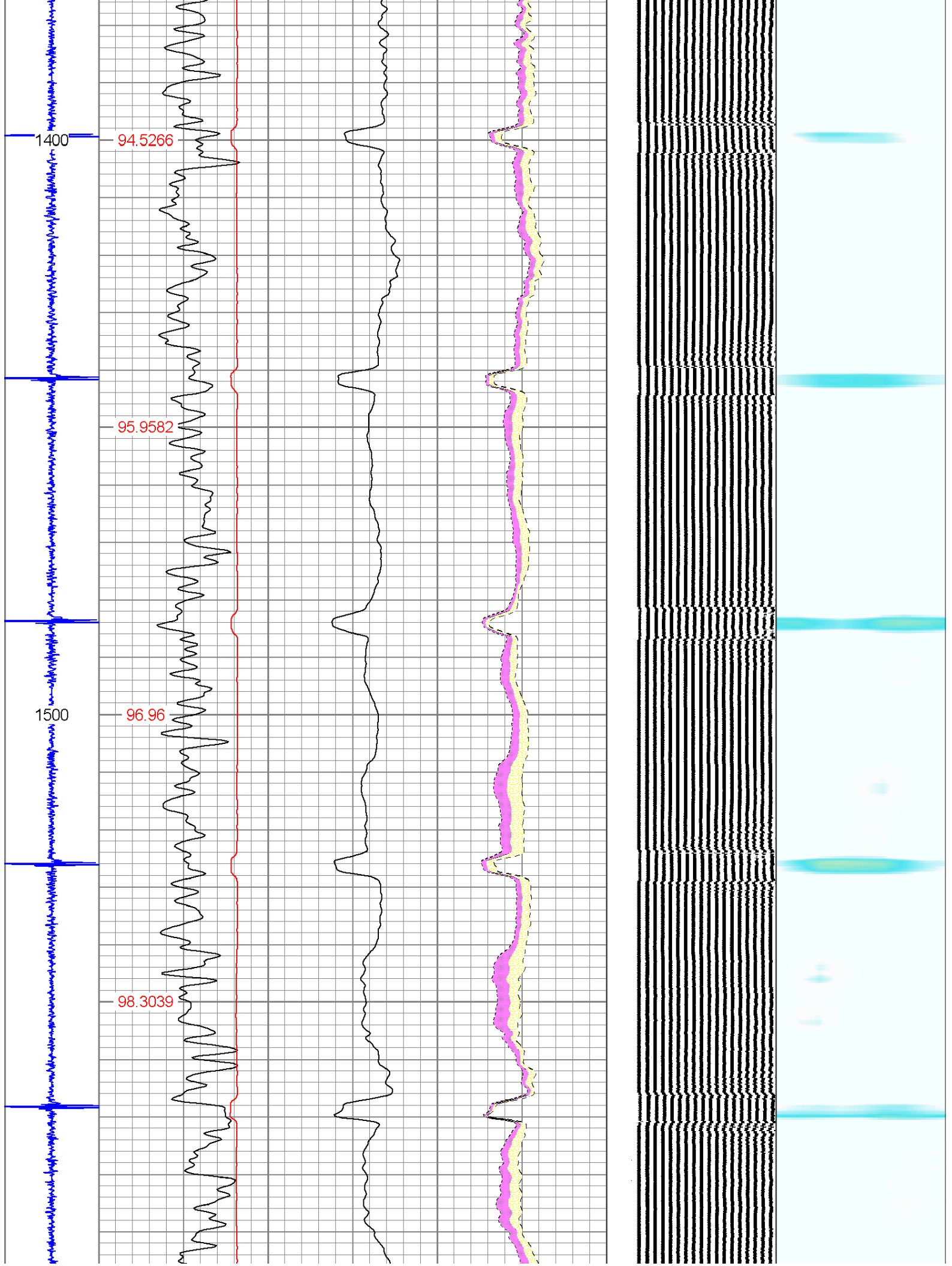


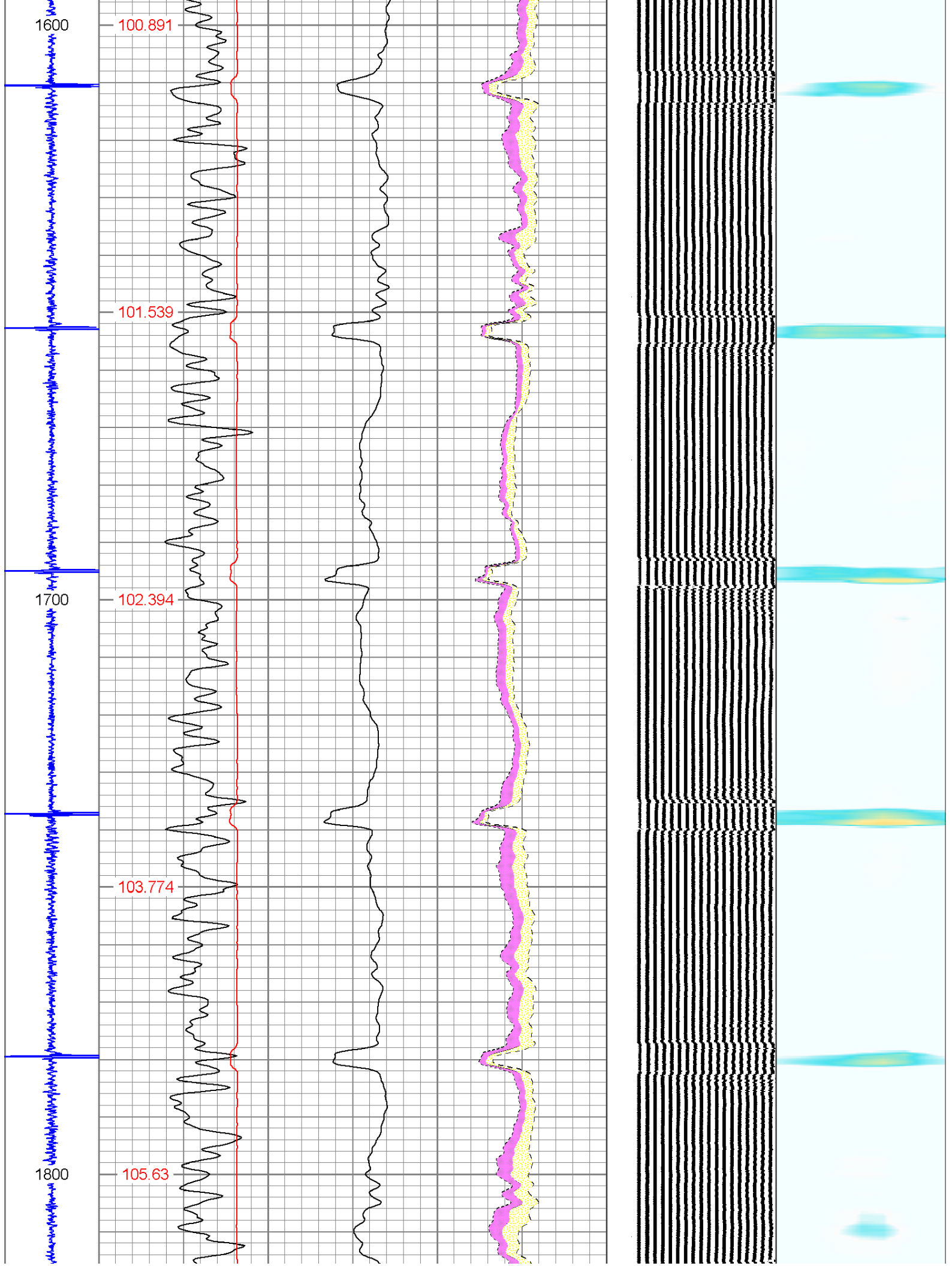


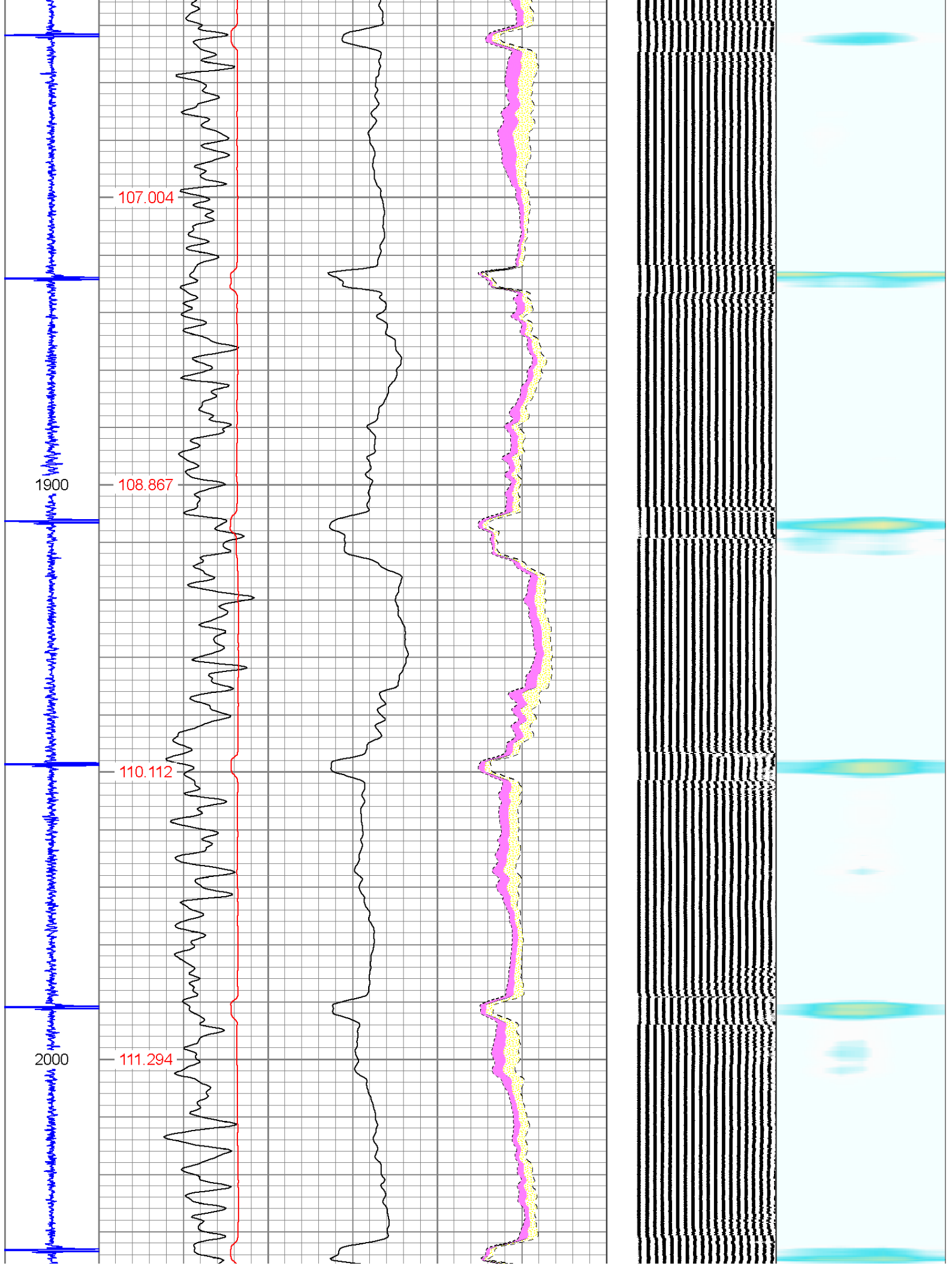


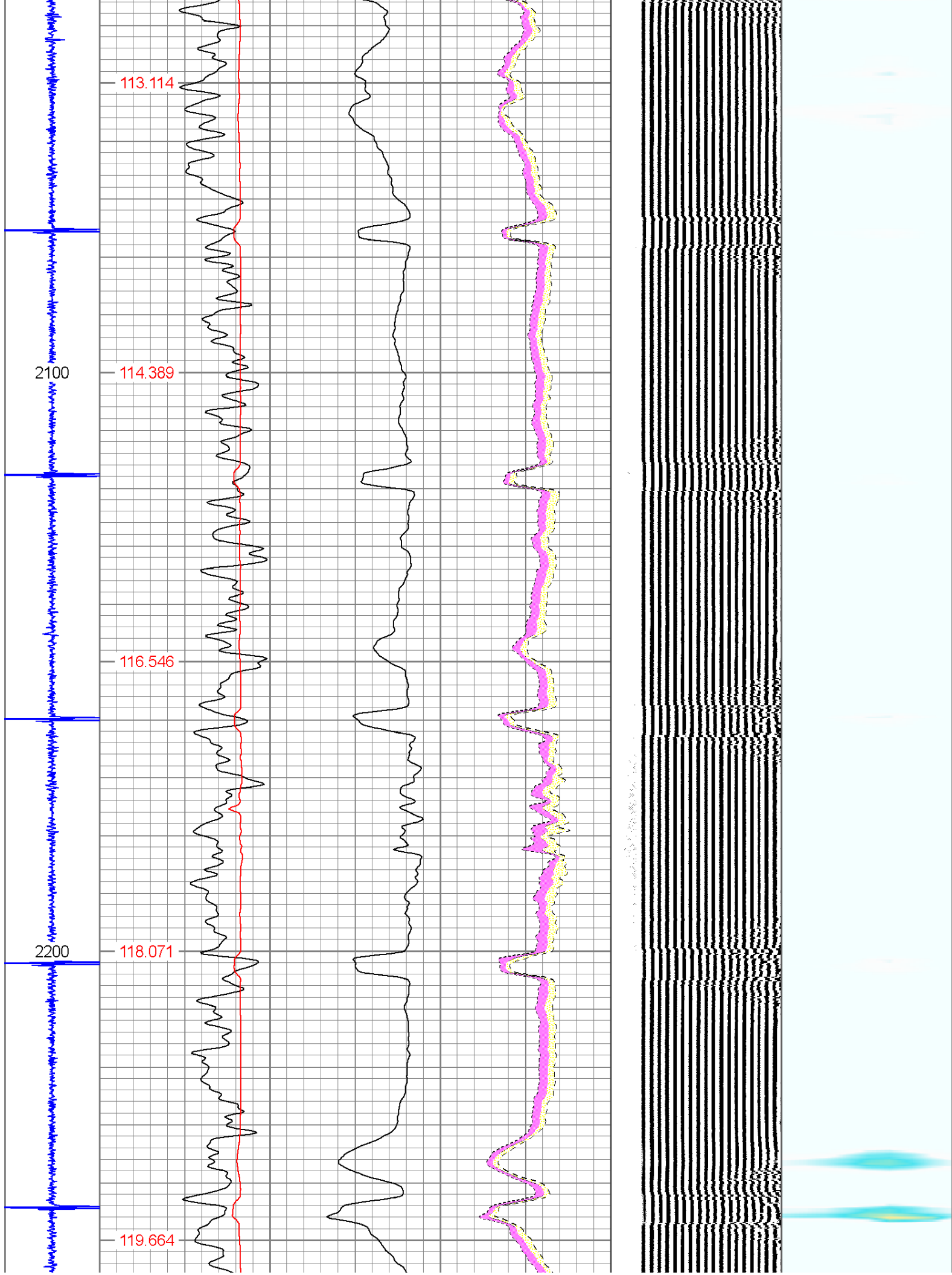


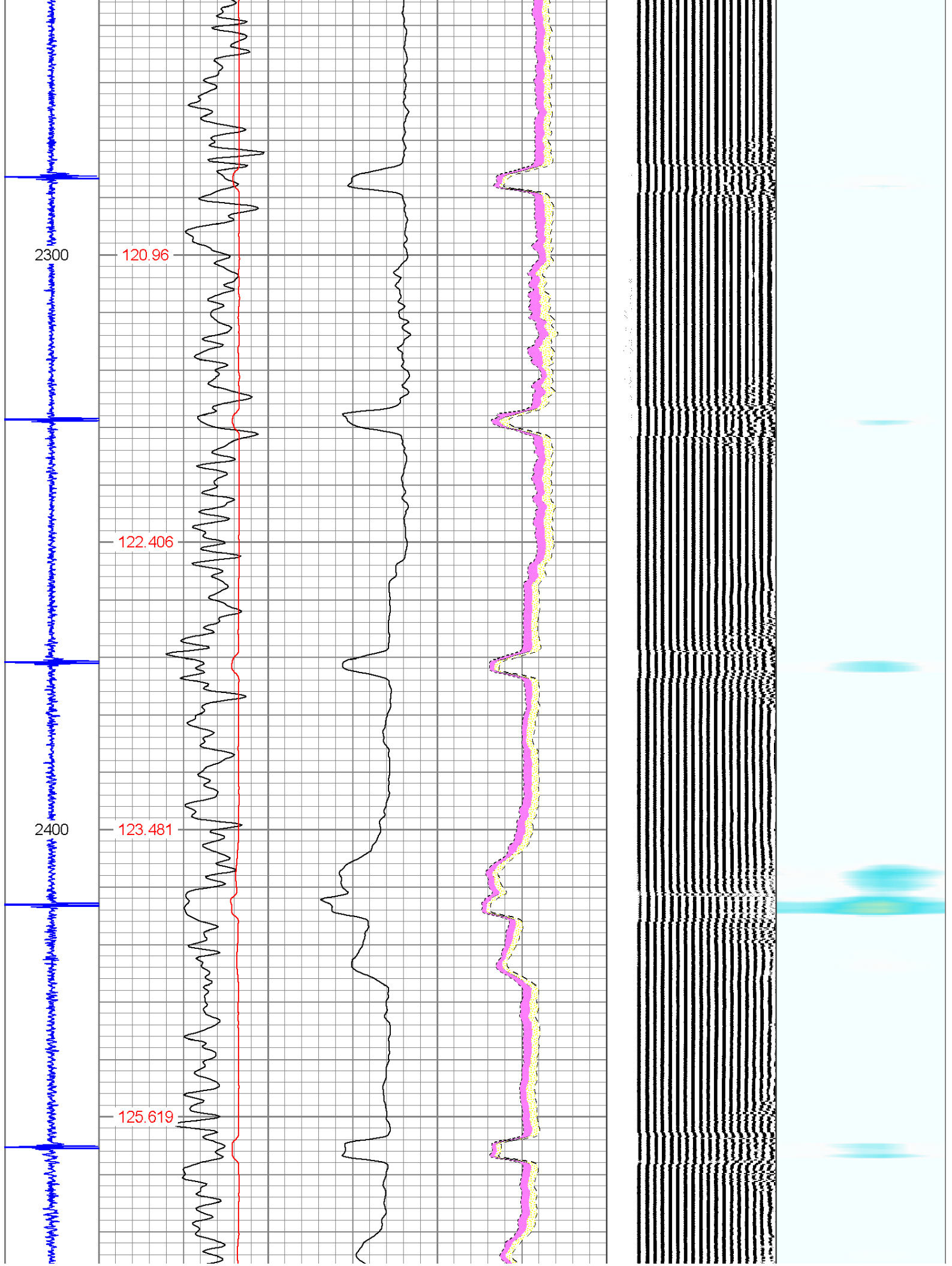


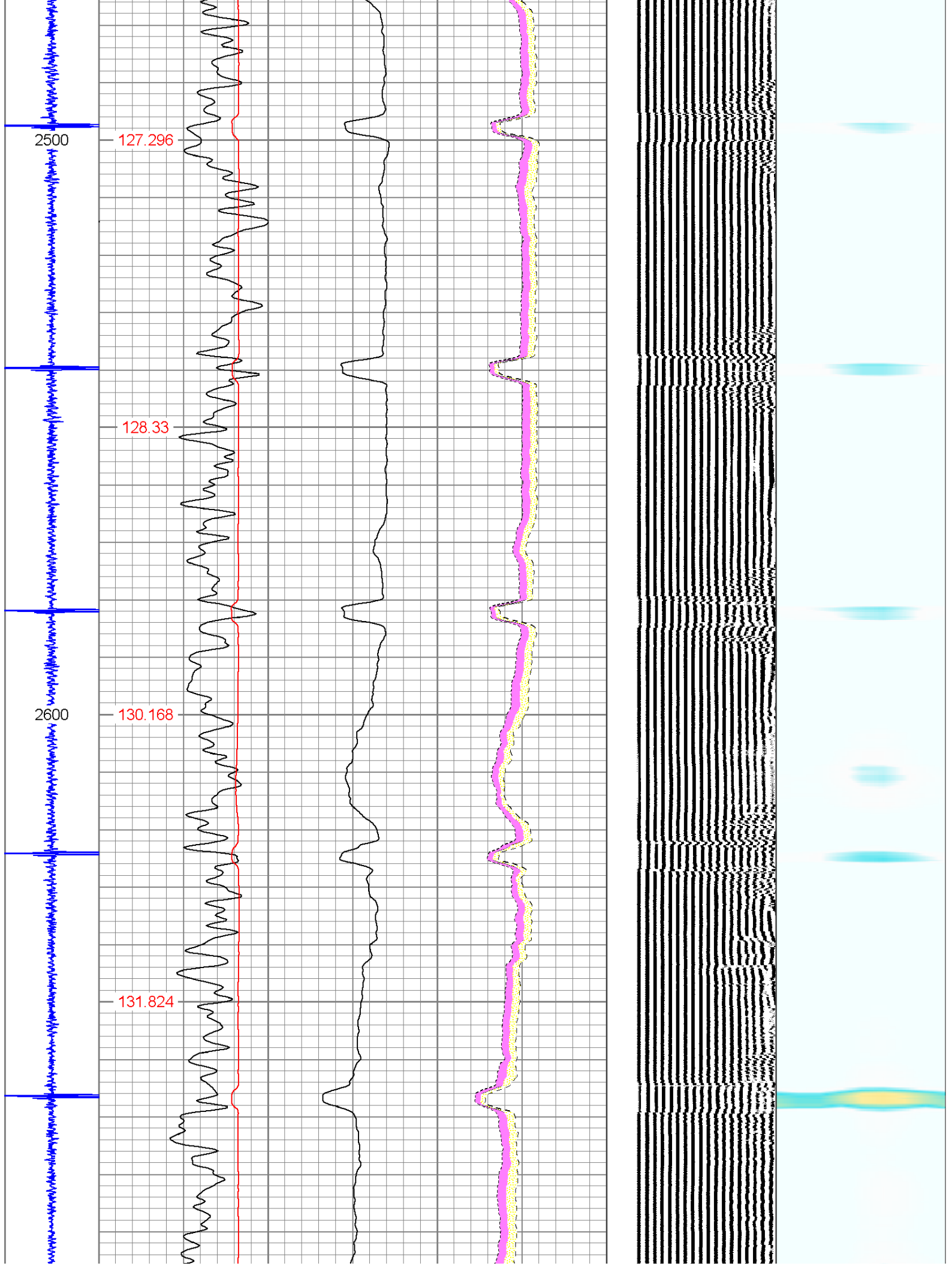


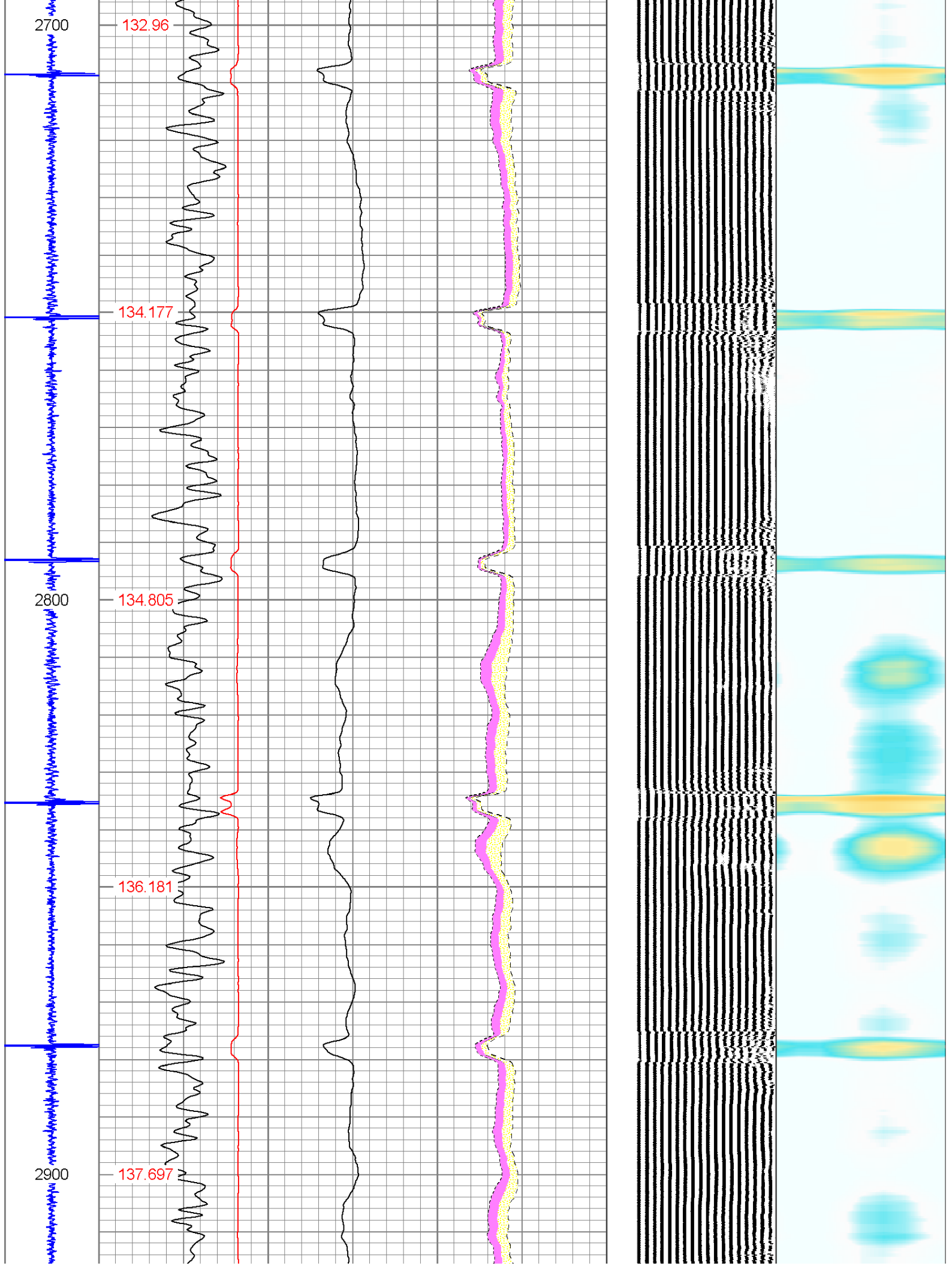


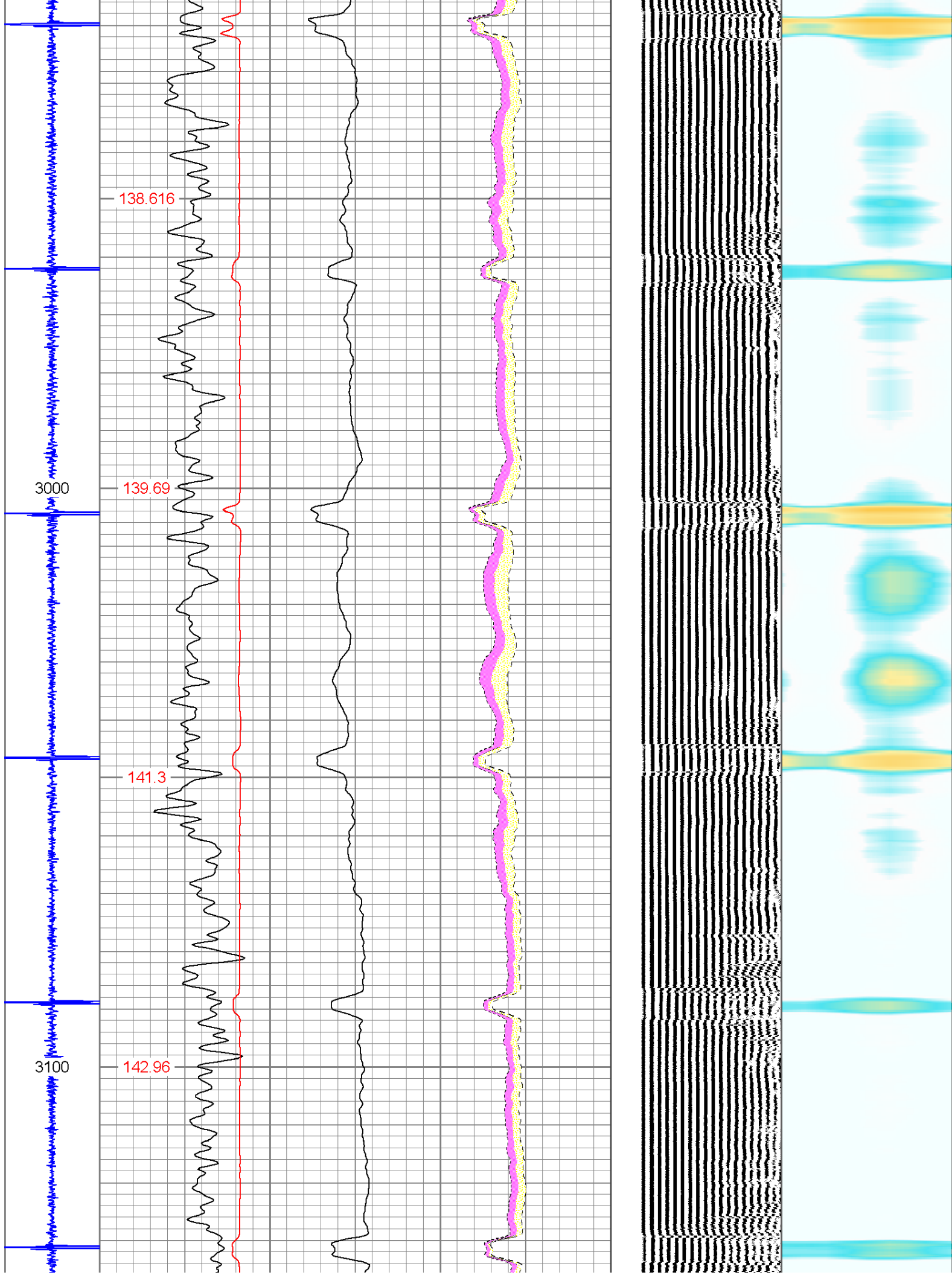


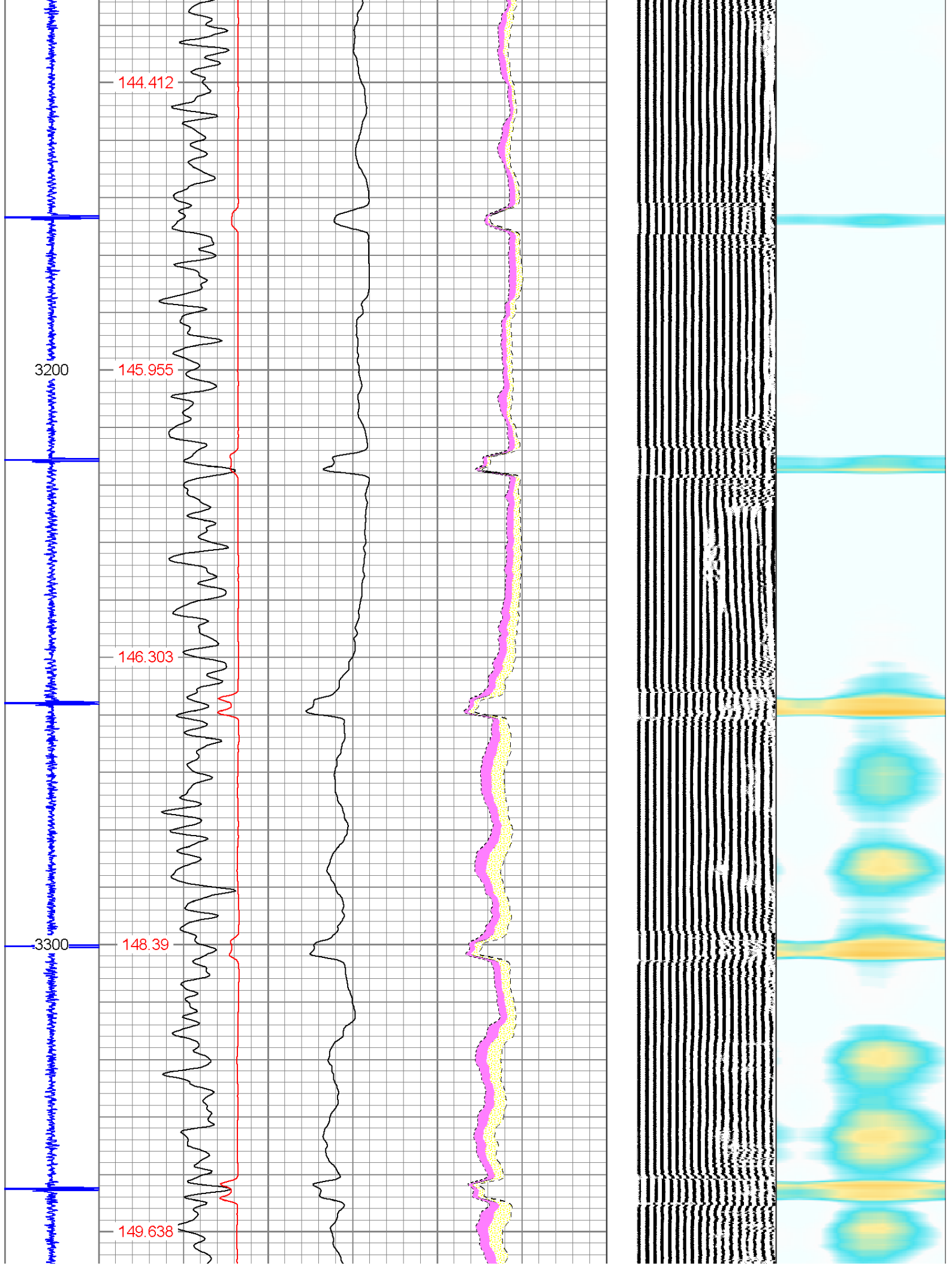


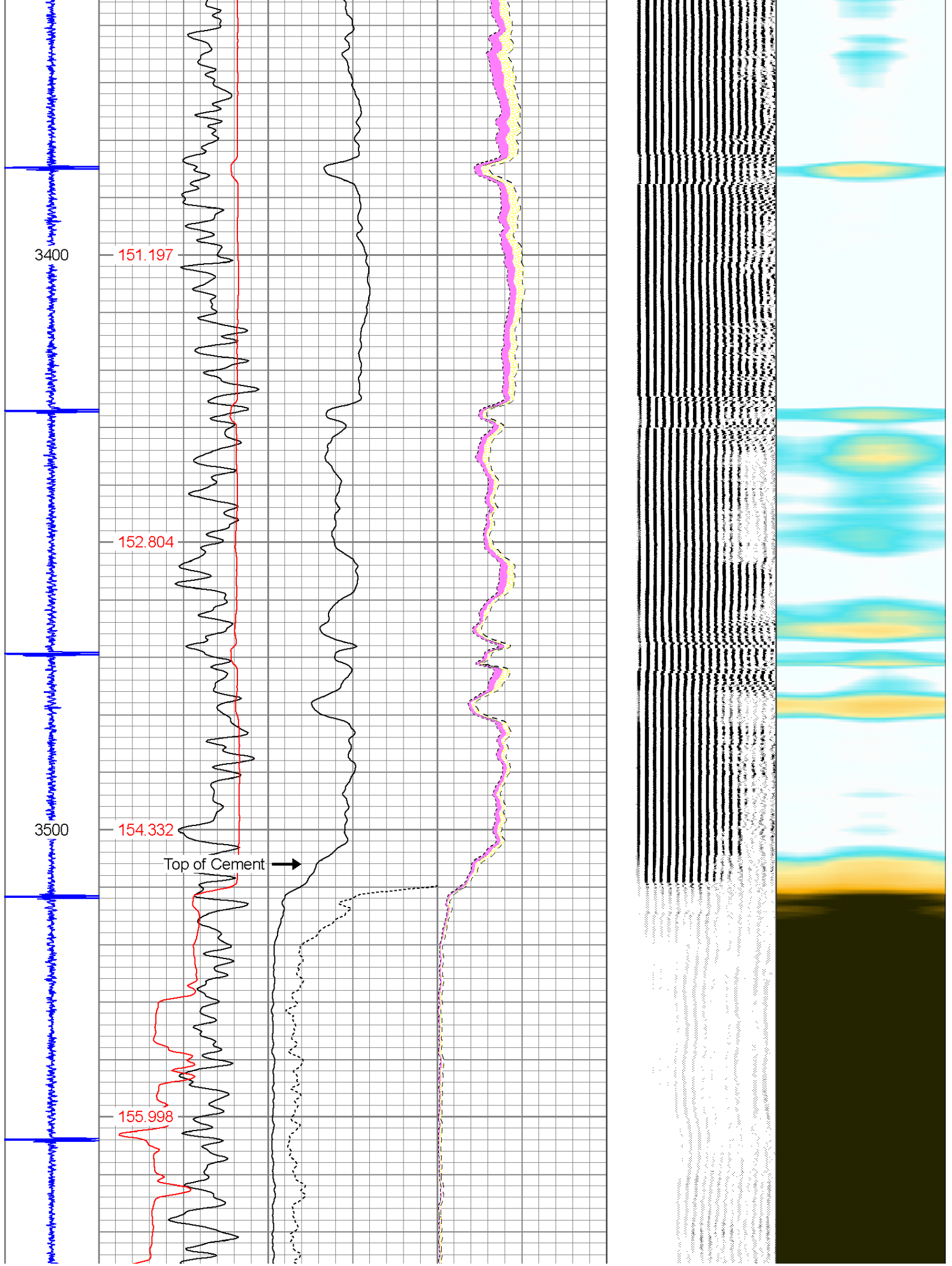


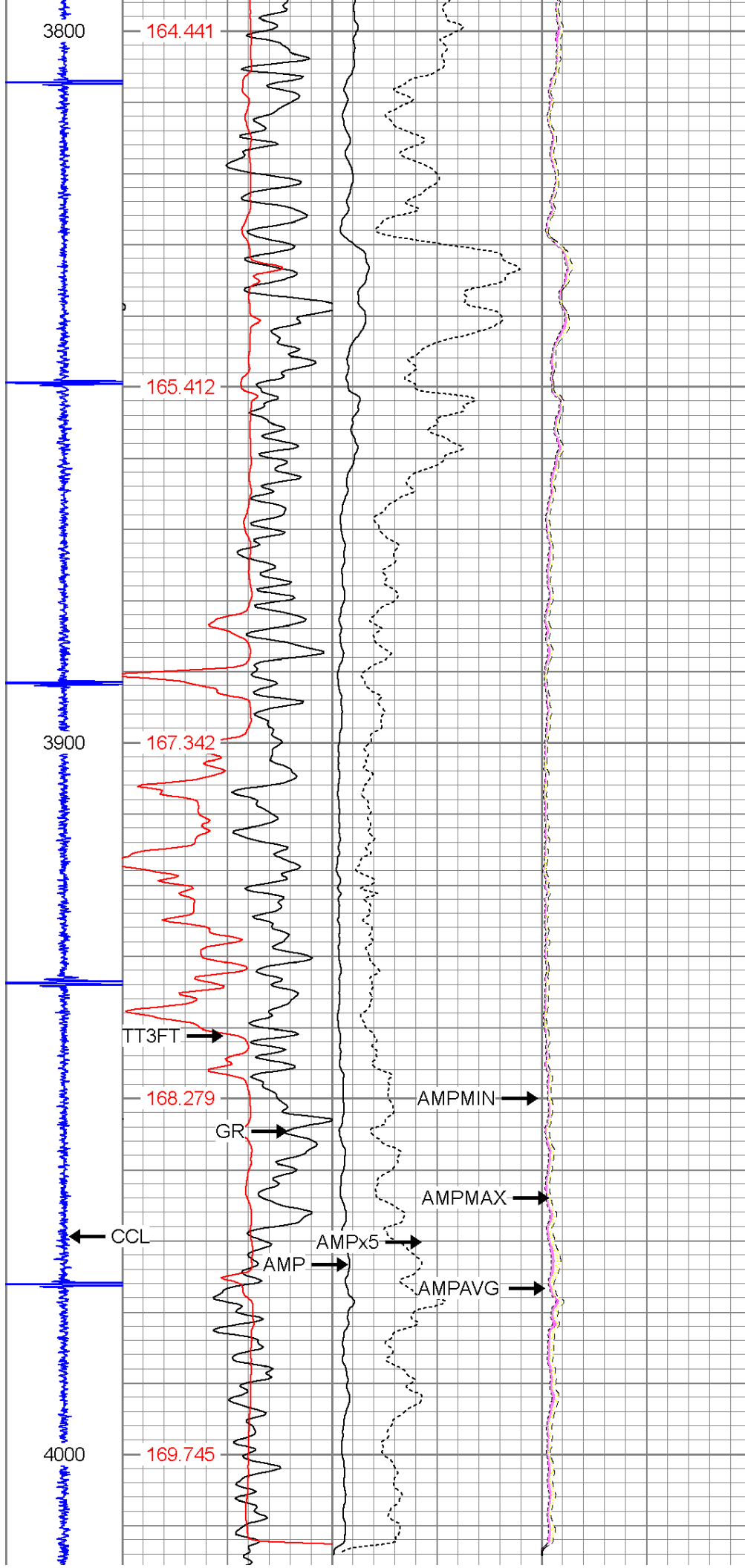


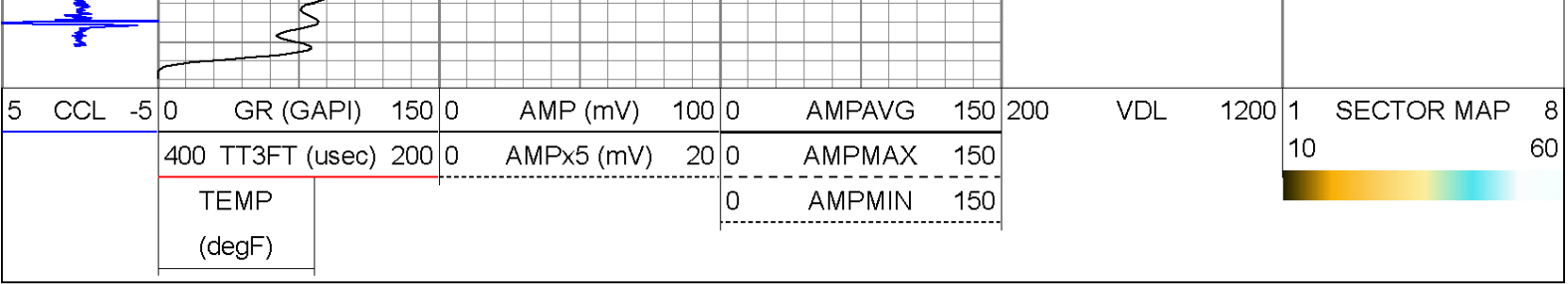














PIONEER

Pioneer Energy Services

Repeat Pass

Database File: 05123242570000_devon_38_8_rbl.db
Dataset Pathname: pass1
Presentation Format: scbl02
Dataset Creation: Tue Feb 17 10:22:31 2015
Charted by: Depth in Feet scaled 1:240

