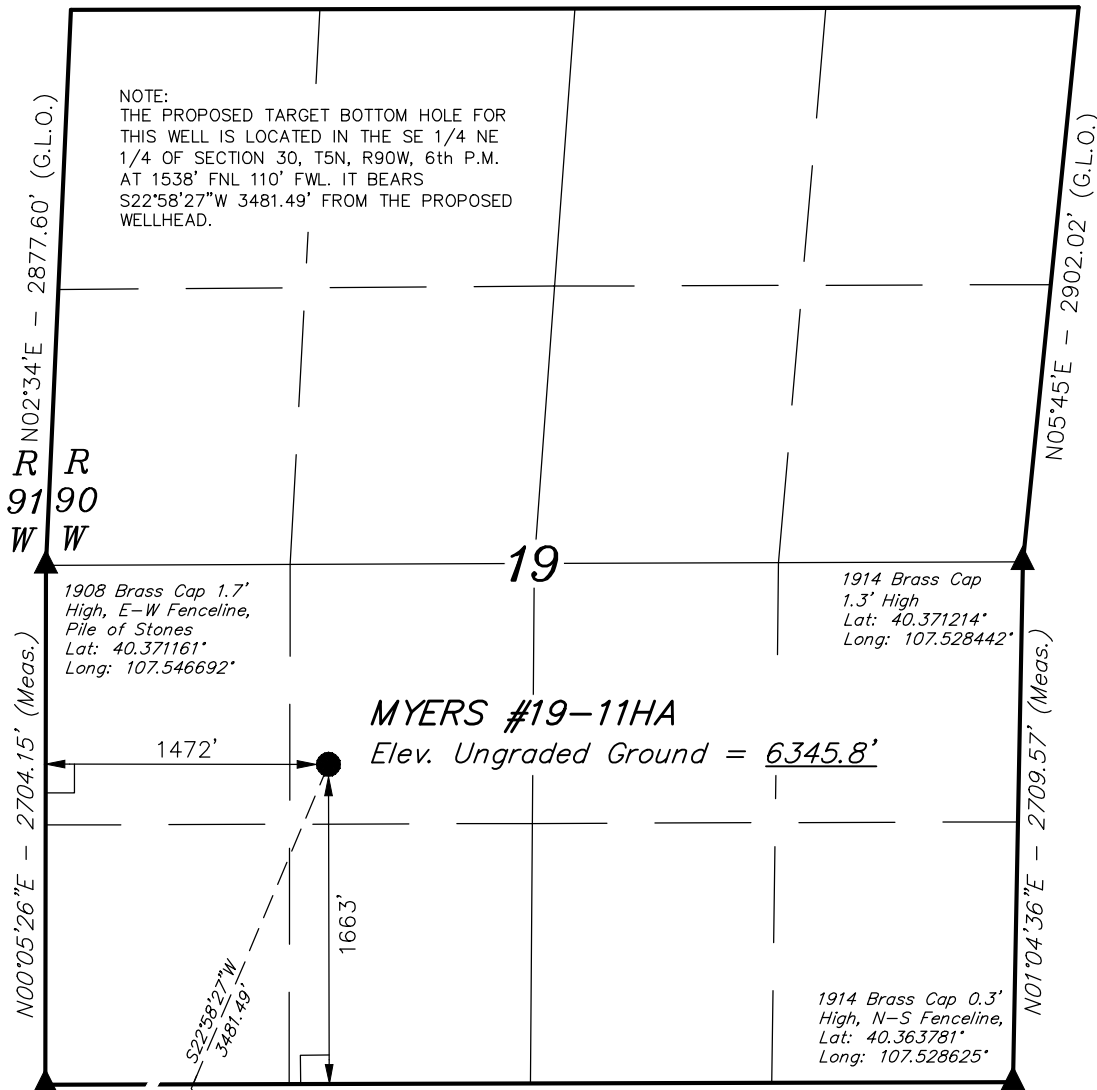


T5N, R90W, 6th P.M.

S89°51'W - 5305.74' (G.L.O.)



1908 Brass Cap
0.6' High
Lat: 40.363742°
Long: 107.546706°

LEGEND:

- └─┘ = 90° SYMBOL
- = PROPOSED WELLHEAD.
- = TARGET BOTTOM HOLE.
- ▲ = SECTION CORNERS LOCATED.

NOTE:
SEE LOCATION DRAWING FOR
EXISTING IMPROVEMENTS WITHIN 500'
OF THE PROPOSED DISTURBANCE.

NAD 83 (SURFACE LOCATION)	
LATITUDE = 40°22'05.94" (40.368317)	
LONGITUDE = 107°32'29.09" (107.541414)	
NAD 27 (SURFACE LOCATION)	
LATITUDE = 40°22'06.03" (40.368342)	
LONGITUDE = 107°32'26.86" (107.540794)	
STATE PLANE NAD 83	
N: 1383565.39 E: 2431229.48	
STATE PLANE NAD 27	
N: 383564.37 E: 1431387.15	

PDOP = 1.4

GRMR OIL & GAS

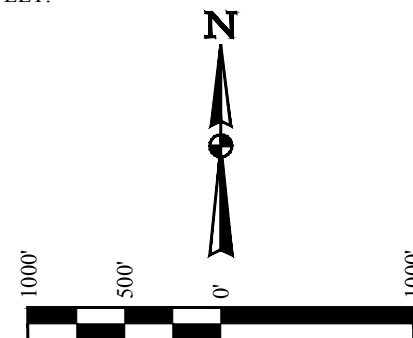
MYERS #19-11HA (SURFACE LOCATION)
NE 1/4 SW 1/4, SECTION 19, T5N, R90W, 6th P.M.
MOFFAT COUNTY, COLORADO

BASIS OF BEARINGS

BASIS OF BEARINGS IS A G.P.S. OBSERVATION

BASIS OF ELEVATION

SPOT ELEVATION AT THE NORTHEAST CORNER OF SECTION 31, T5N, R90W, 6th P.M. TAKEN FROM THE HAMILTON, QUADRANGLE, COLORADO, MOFFAT COUNTY, 7.5 MINUTE QUAD (TOPOGRAPHIC MAP) PUBLISHED BY THE UNITED STATES DEPARTMENT OF THE INTERIOR, GEOLOGICAL SURVEY. SAID ELEVATION IS MARKED AS BEING 6664 FEET.



CERTIFICATE

THIS IS TO CERTIFY THAT THE ABOVE PLAT WAS PREPARED FROM FIELD NOTES OF ACTUAL SURVEYS MADE BY ME OR UNDER MY SUPERVISION AND THAT THE SAME ARE TRUE AND CORRECT TO THE BEST OF MY KNOWLEDGE AND BELIEF.

Harold Marshall
REGISTERED LAND SURVEYOR
REGISTRATION NO. 38130
STATE OF COLORADO 12-01-14



UELS, LLC
Corporate Office * 85 South 200 East
Vernal, UT 84078 * (435) 789-1017

SURVEYED BY: GLENN MCELROY, N.E.	DATE: 10-02-14
DRAWN BY: M.O.B.	DATE DRAWN: 10-10-14
SCALE: 1" = 1000'	REVISED: 12-04-14 M.O.B.

WELL LOCATION PLAT

1908 Brass Cap
0.6' High
Lat: 40.363742°
Long: 107.546706°

Surface
Location

T5N, R90W, 6th P.M.

S89°50'44"W - 5040.07' (Meas.)

1914 Brass Cap 0.3'
High, N-S Fenceline,
Lat: 40.363781°
Long: 107.528625°

N00°13'18"W
2702.55' (Meas.)
110'

MYERS #19-11HA
Target Bottom Hole

1910 Brass Cap
1.0' High
Lat: 40.356325°
Long: 107.546667°

30

NOTE:
THE PROPOSED TARGET BOTTOM HOLE
BEARS S22°58'27"W 3481.49' FROM THE
PROPOSED WELLHEAD WHICH IS LOCATED IN
THE NE 1/4 SW 1/4 OF SECTION 19, T5N,
R90W, 6th P.M. AT 1663' FSL 1472' FWL.

1908 Brass Cap 1.2'
High, N-S Fenceline,
Lat: 40.356253°
Long: 107.528542°

N00°02'34"E - 2694.23' (Meas.)

1908 Brass Cap
0.9' High
Lat: 40.348931°
Long: 107.546669°

1914 Brass Cap
0.5' High
Lat: 40.348836°
Long: 107.537503°

1914 Brass Cap, 0.2'
High, Pile of Stones,
Steel Post
Lat: 40.348761°
Long: 107.528433°

N89°12'14"W - 2556.57' (Meas.)

N89°19'23"W - 2531.00' (Meas.)

R
91
W
R
90
W

LEGEND:

- = 90° SYMBOL
- = PROPOSED WELLHEAD.
- = TARGET BOTTOM HOLE.
- ▲ = SECTION CORNERS LOCATED.

NAD 83 (TARGET BOTTOM HOLE)	
LATITUDE = 40°21'34.27" (40.359520)	
LONGITUDE = 107°32'46.63" (107.546287)	
NAD 27 (TARGET BOTTOM HOLE)	
LATITUDE = 40°21'34.37" (40.359547)	
LONGITUDE = 107°32'44.40" (107.545667)	
STATE PLANE NAD 83	
N: 1380393.12 E: 2429798.16	
STATE PLANE NAD 27	
N: 380392.10 E: 1429955.84	

GRMR OIL & GAS

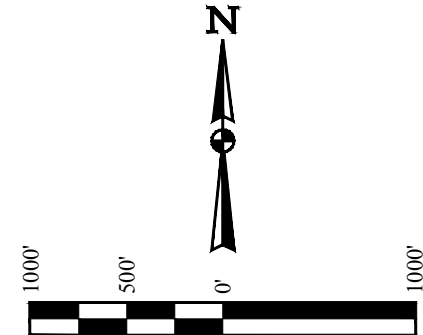
MYERS #19-11HA (TARGET BOTTOM HOLE)
SE 1/4 NE 1/4, SECTION 25, T5N, R91W, 6th P.M.
MOFFAT COUNTY, COLORADO

BASIS OF BEARINGS

BASIS OF BEARINGS IS A G.P.S. OBSERVATION

BASIS OF ELEVATION

SPOT ELEVATION AT THE NORTHEAST CORNER OF SECTION 31, T5N, R90W, 6th P.M. TAKEN FROM THE HAMILTON, QUADRANGLE, COLORADO, MOFFAT COUNTY, 7.5 MINUTE QUAD (TOPOGRAPHIC MAP) PUBLISHED BY THE UNITED STATES DEPARTMENT OF THE INTERIOR, GEOLOGICAL SURVEY. SAID ELEVATION IS MARKED AS BEING 6664 FEET.



CERTIFICATE

THIS IS TO CERTIFY THAT THE ABOVE PLAT WAS PREPARED FROM FIELD NOTES OF ACTUAL SURVEYS MADE BY ME OR UNDER MY SUPERVISION AND THAT THE SAME ARE TRUE AND CORRECT TO THE BEST OF MY KNOWLEDGE AND BELIEF.

Harold Marshall
REGISTERED LAND SURVEYOR
REGISTRATION NO. 38130
STATE OF COLORADO
12-15-14



UELS, LLC
Corporate Office * 85 South 200 East
Vernal, UT 84078 * (435) 789-1017

SURVEYED BY: GLENN MCELROY, N.E.	DATE: 10-02-14
DRAWN BY: M.O.B.	DATE DRAWN: 10-10-14
SCALE: 1" = 1000'	REVISED: 00-00-00

WELL LOCATION PLAT