

OPERATOR: **WPX ENERGY**

WELL NAME: AP 323-17-695

FIELD NAME: ALLEN POINT

DRILLING RIG: NABORS 573

API #: 05-045-21384

LOCATION: SEC. 17 T 6S R 95W

SURFACE HOLE: 15' FNL , 2495' FWL

BOTTOM HOLE: 2268' FSL , 2177' FWL

SCALE: 1"=100'



533 Bogart Lane, Unit A
Grand Junction, CO 81505
Office (970) 424-5162

AP 323-17-695

COUNTY: GARFIELD

STATE: COLORADO

DRILLING FLUID: LSND

LOGGER: LUKE DAVENPORT

GROUND ELEVATION: 6909'

KELLY BUSHING: 6935'

TVD VS. MD = -370'

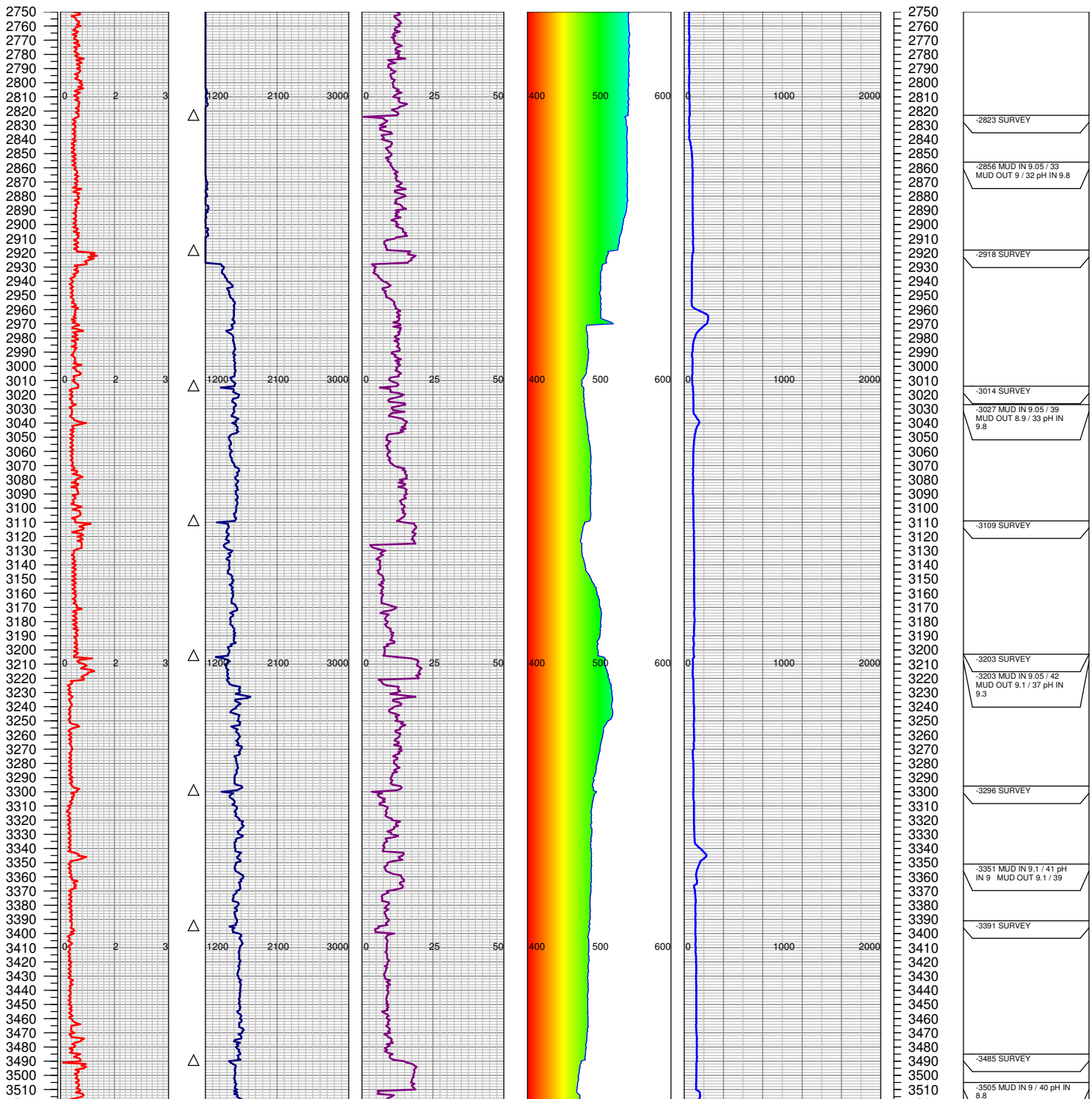
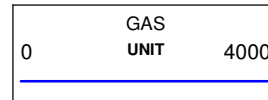
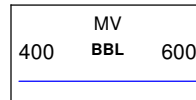
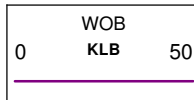
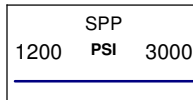
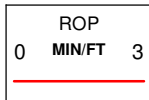
DEPTHS LOGGED: 2750'-10015'

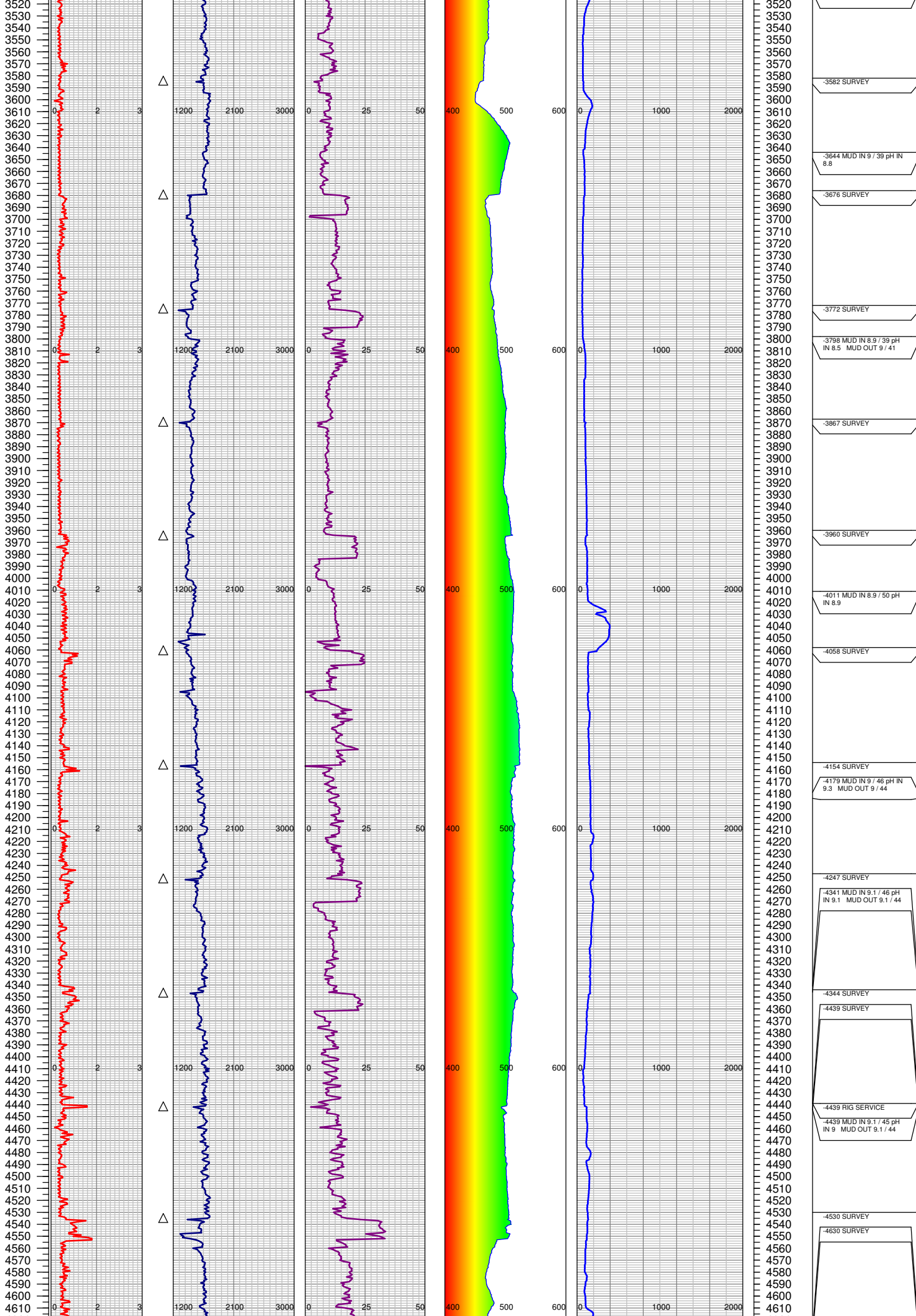
SPUD DATE: 9/14/2014

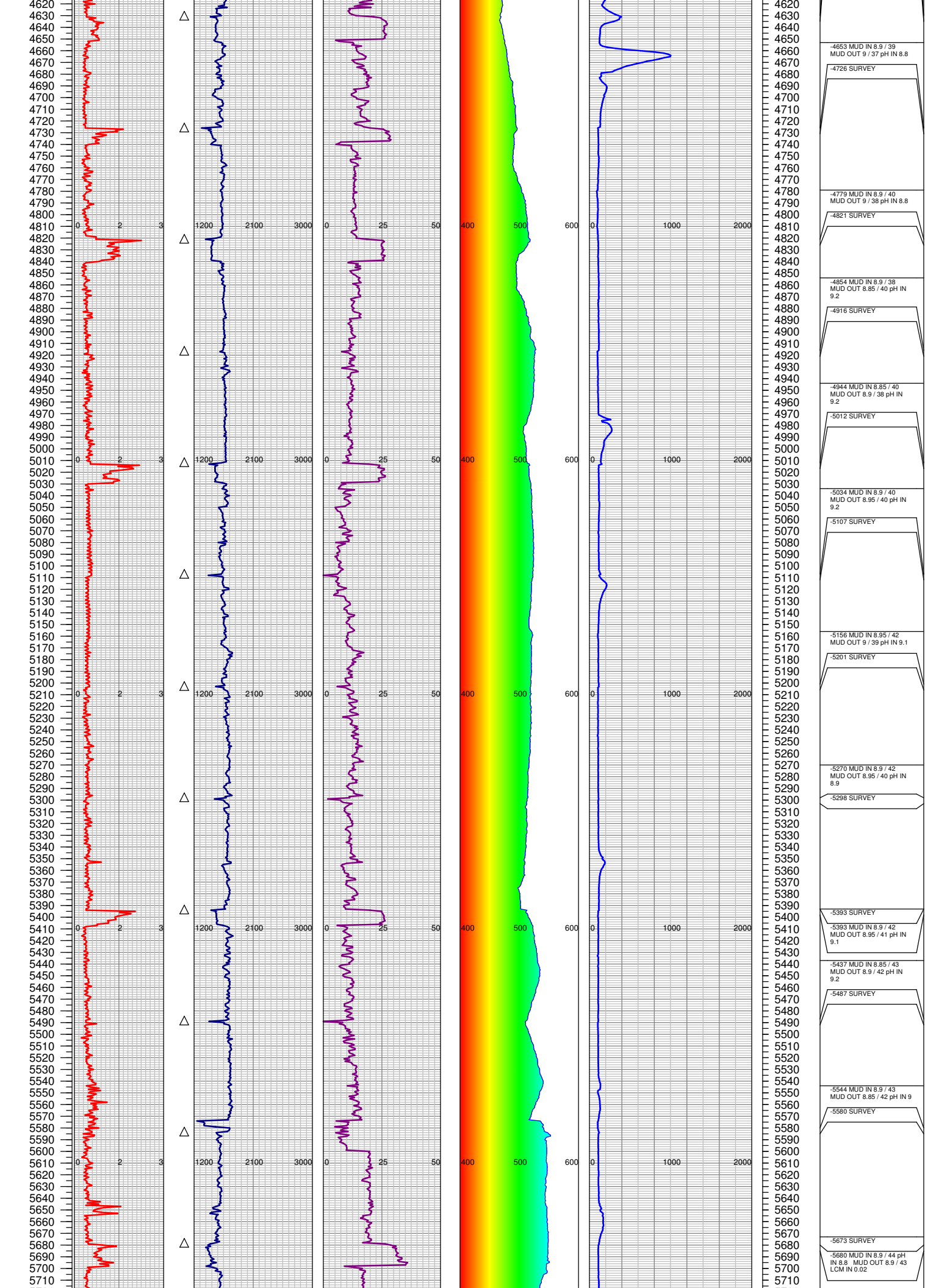
FGS BEGIN LOGGING: 9/18/2014

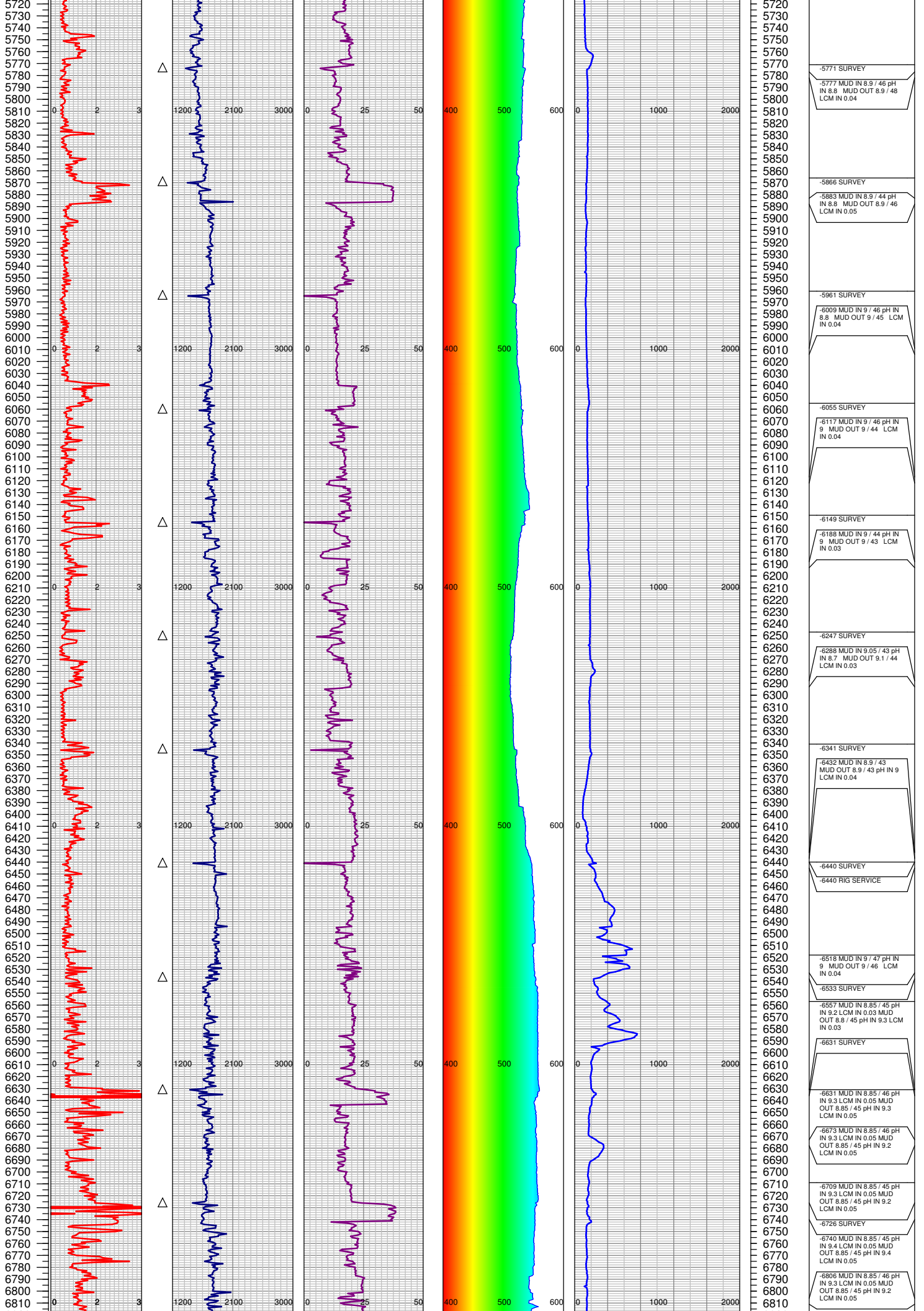
TD DATE: 9/24/2014

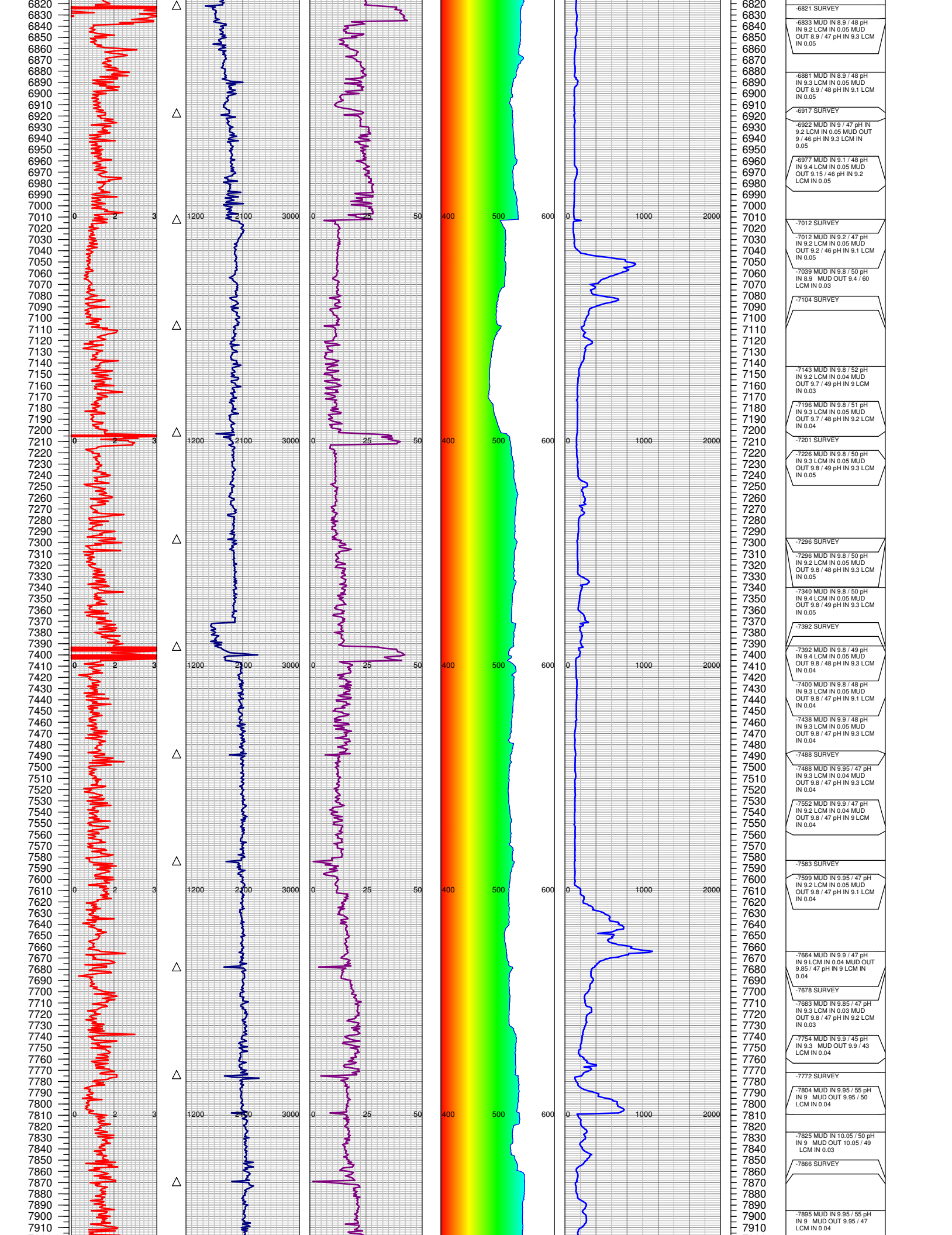
DATES LOGGED: 9/18/2014-9/24/2014

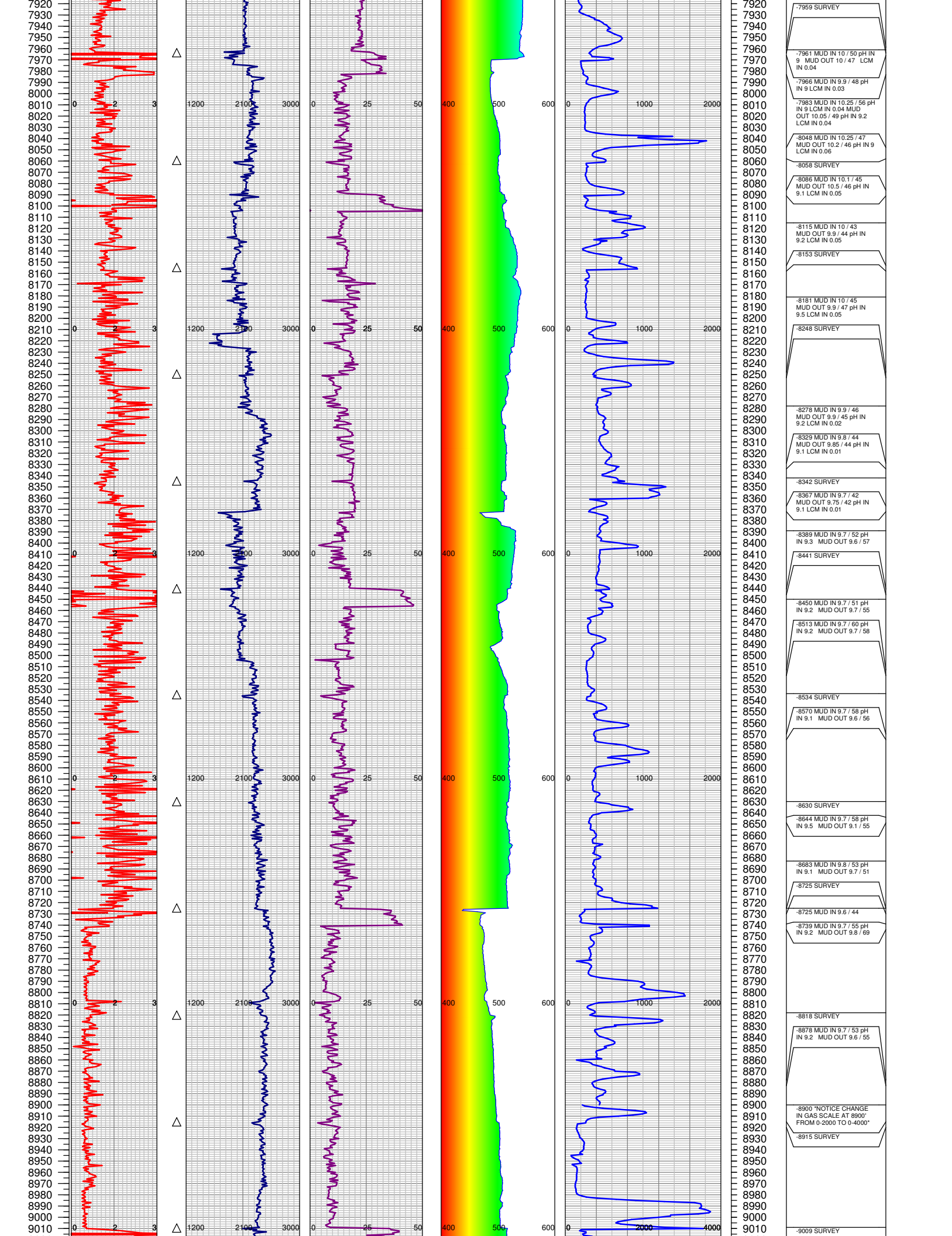


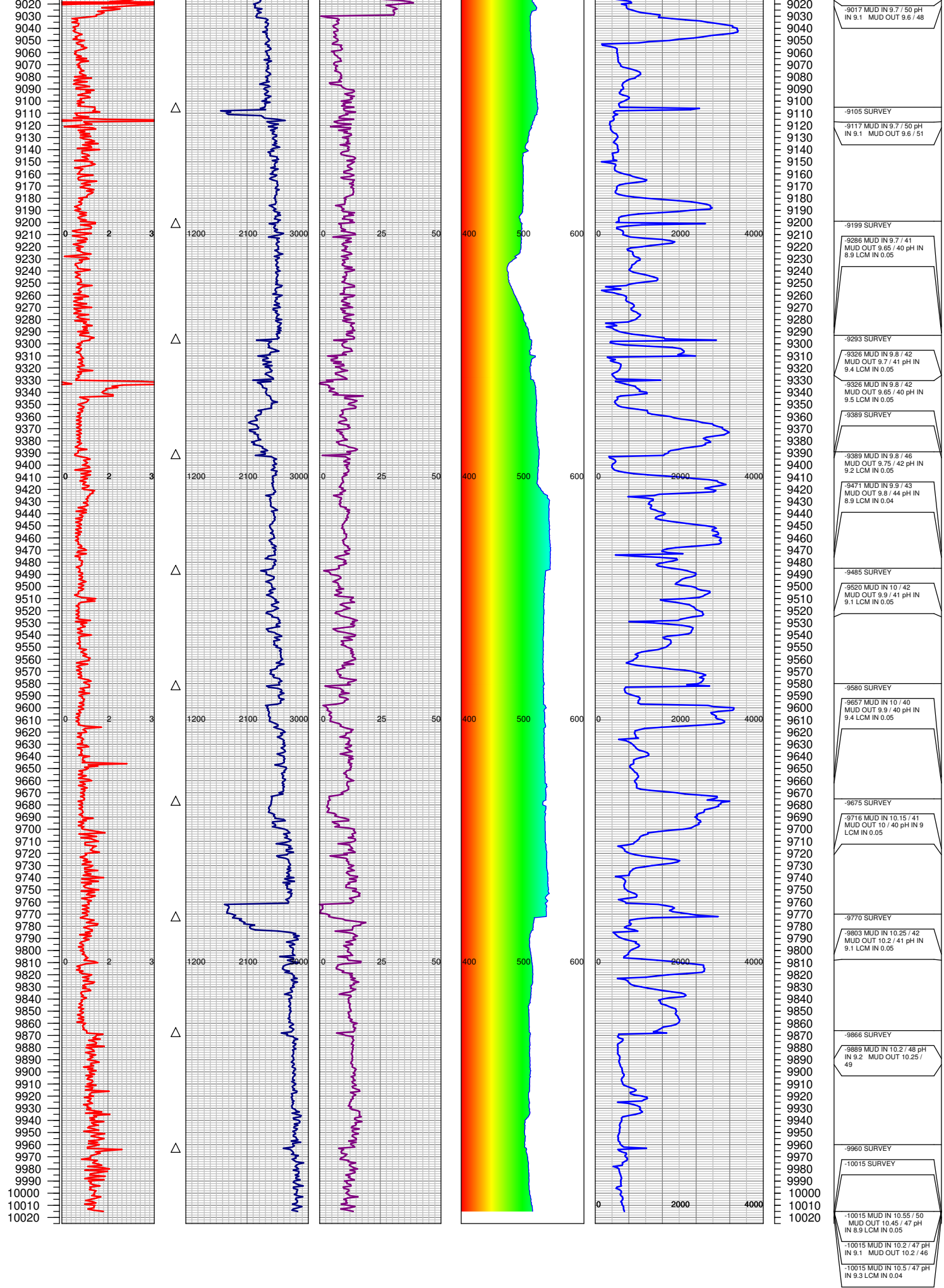












-9017 MUD IN 9.7 / 50 pH
IN 9.1 MUD OUT 9.6 / 48

-9105 SURVEY

-9117 MUD IN 9.7 / 50 pH
IN 9.1 MUD OUT 9.6 / 51

-9199 SURVEY

-9286 MUD IN 9.7 / 41
MUD OUT 9.65 / 40 pH IN
8.9 LCM IN 0.05

-9293 SURVEY

-9326 MUD IN 9.8 / 42
MUD OUT 9.7 / 41 pH IN
9.4 LCM IN 0.05

-9326 MUD IN 9.8 / 42
MUD OUT 9.65 / 40 pH IN
9.5 LCM IN 0.05

-9389 SURVEY

-9389 MUD IN 9.8 / 46
MUD OUT 9.75 / 42 pH IN
9.2 LCM IN 0.05

-9471 MUD IN 9.9 / 43
MUD OUT 9.9 / 40 pH IN
8.9 LCM IN 0.04

-9485 SURVEY

-9520 MUD IN 10 / 42
MUD OUT 9.9 / 41 pH IN
9.1 LCM IN 0.05

-9580 SURVEY

-9657 MUD IN 10 / 40
MUD OUT 10.2 / 41 pH IN
9.4 LCM IN 0.05

-9675 SURVEY

-9716 MUD IN 10.15 / 41
MUD OUT 10 / 40 pH IN 9
LCM IN 0.05

-9770 SURVEY

-9803 MUD IN 10.25 / 42
MUD OUT 10.2 / 41 pH IN
9.1 LCM IN 0.05

-9866 SURVEY

-9889 MUD IN 10.2 / 48 pH
IN 9.2 MUD OUT 10.25 /
49

-9960 SURVEY

-10015 SURVEY

-10015 MUD IN 10.55 / 50
MUD OUT 10.45 / 47 pH
IN 8.9 LCM IN 0.05

-10015 MUD IN 10.2 / 47 pH
IN 9.1 MUD OUT 10.2 / 46

-10015 MUD IN 10.5 / 47 pH
IN 9.3 LCM IN 0.04

TOTAL DEPTH = 10015'

FGS RELEASED: 9/24/2014