



DDC

**RM-140937**

5":100' - MD

9/23/2014 8:51:54 AM

**Oper. Company:** Noble Energy Inc  
**Country:** USA  
**State / Province:** Colorado  
**County / Parish:** WELD  
**Started:** 09/19/2014 01:47 PM

**API/UWI:** 05-123-37618  
**Field:** Wattenberg  
**Well:** Rohn State LD10-67HN  
**Rig:** H&P 326  
**Ended:** 09/23/2014 08:00 AM

**Personnel**

**Day Hand:** Bob Kubistek  
**Night Hand:** Worth Barham  
**Comp. Emp:** DDC

**Location**

**Latitude:** 40° 46' 7.068 N  
**Longitude:** 103° 51' 40.104 W  
**Elev. GL:** 4,730'  
**Elev. DF:** 30  
**Elev. KB:** 4,760'

**Hole Data**

Size	From	To
13 3/4	0	1210
8 3/4	1210	6210
6 1/8	6210	9637

**Casing Data**

Size	From	To
9 5/8	0	1210
7	1210	6200
4 1/2	6200	9637

**Bit Sizes**

Size	From	To
13 3/4	0	1210
8 3/4	1210	6210
6 1/8	6210	9637

**Mud Data**

Type	Weight	Density	Viscosity	Rm	Rmf	Rmc	From	To
LSND	8.55		26				1210	6210
LSND	10		36				6210	9637

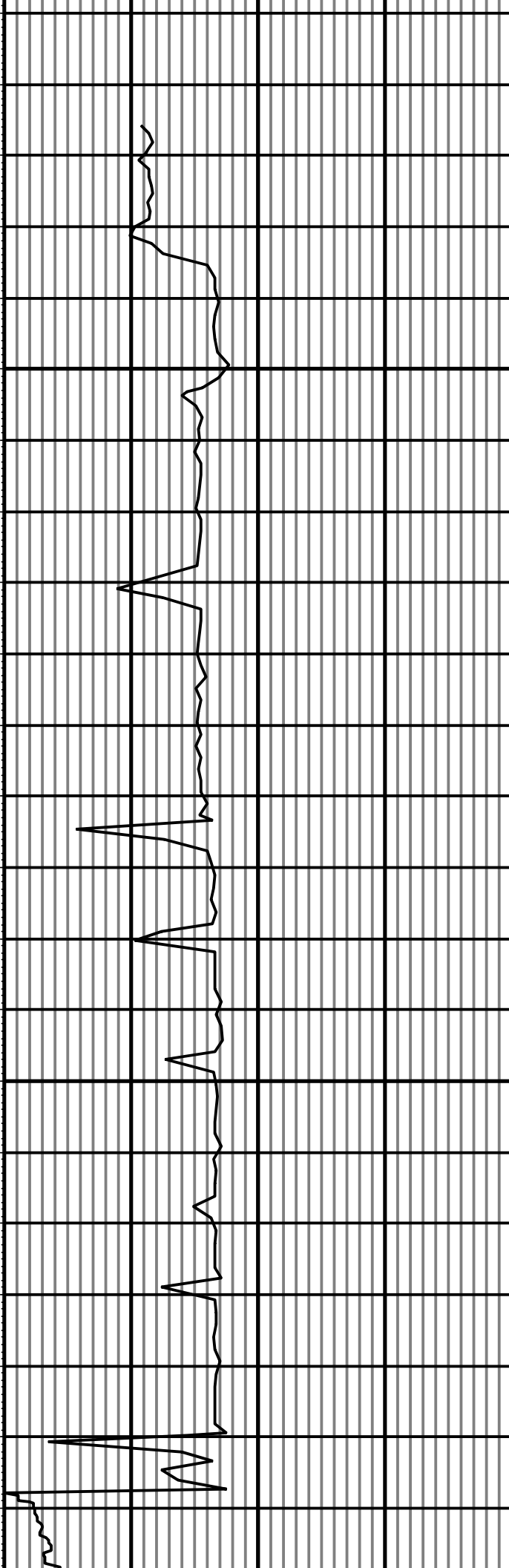
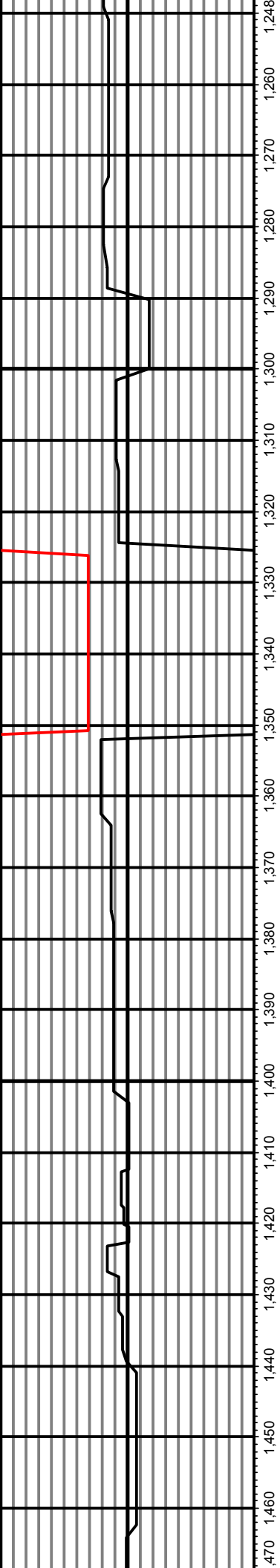
**Tool Run Data**

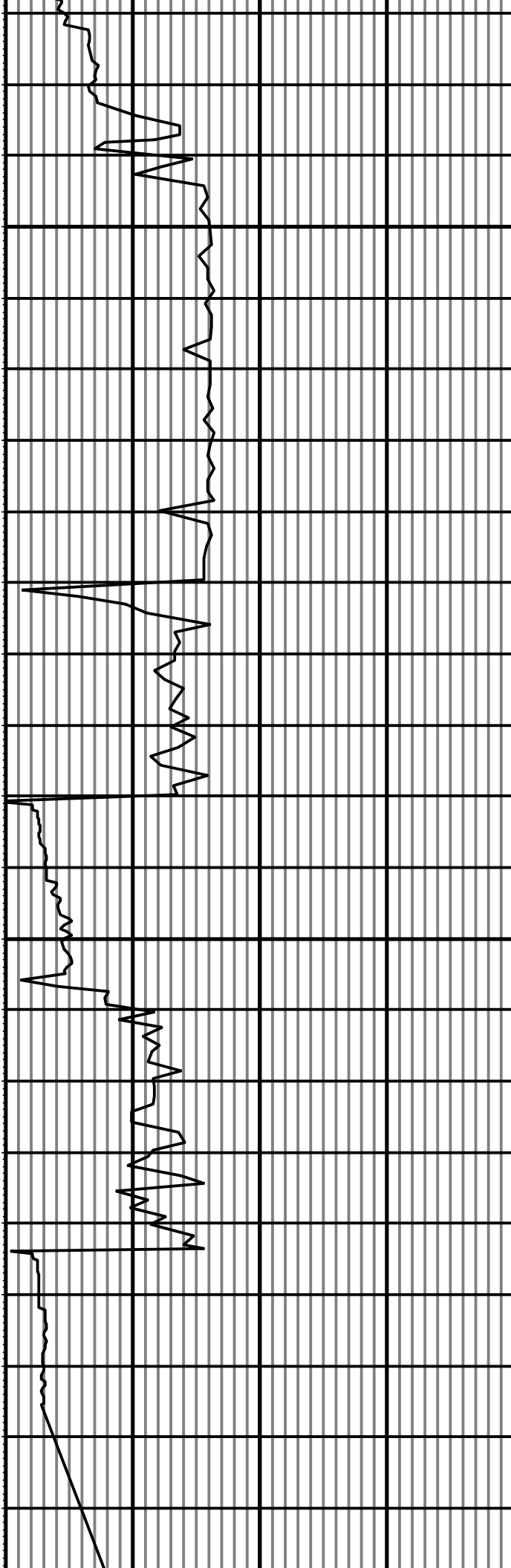
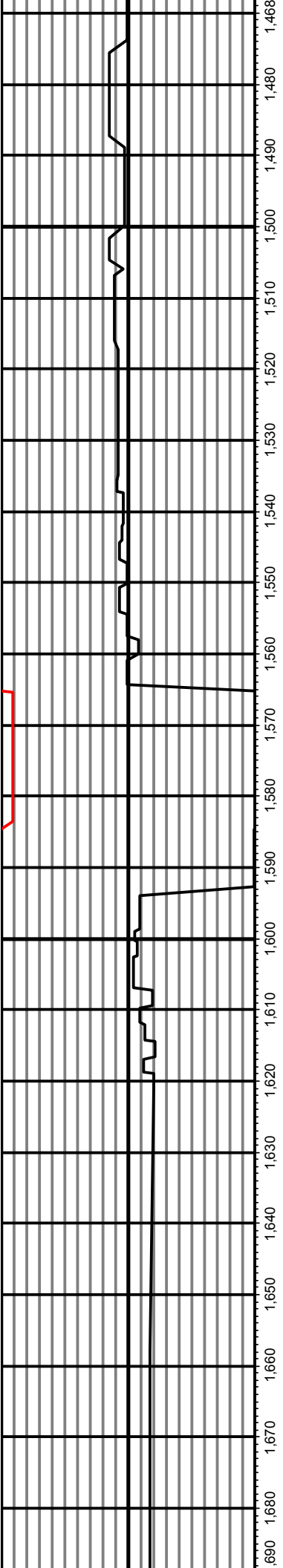
Serial Number	Gamma Offset	Resist. Offset	Start Time	Start Depth	End Time	End Depth
420	45	0	9/19/2014 1:47:09 PM	1210	9/20/2014 8:30:09 PM	6210
420	52	0	9/20/2014 9:30:28 PM	6210	9/23/2014 8:00:28 AM	9637

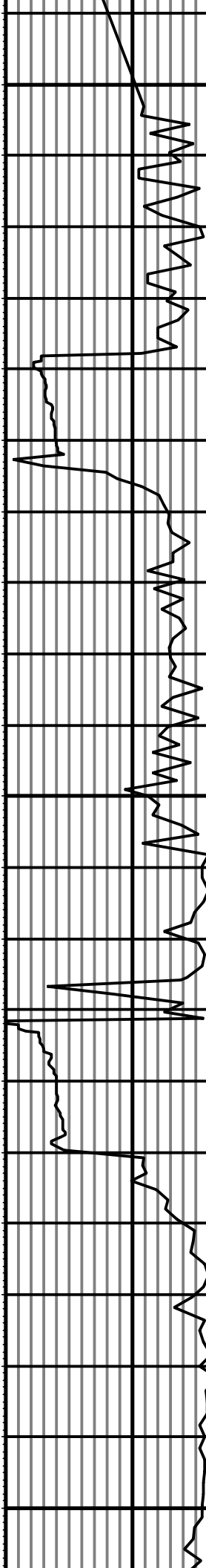
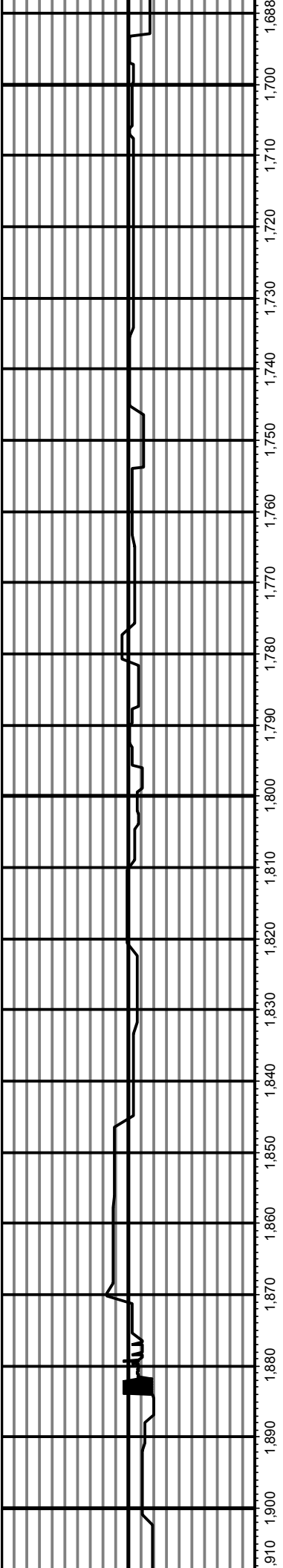
*All interpretations are opinions based on inferences from electrical or other measurements and we cannot and do not guarantee the accuracy or correctness of any interpretation, and we shall not except in the case of gross or willful negligence on our part, be liable or responsible for any loss, cost damages or expenses incurred or sustained by anyone resulting from an interpretation made by any of our officers, agents, or employees.*

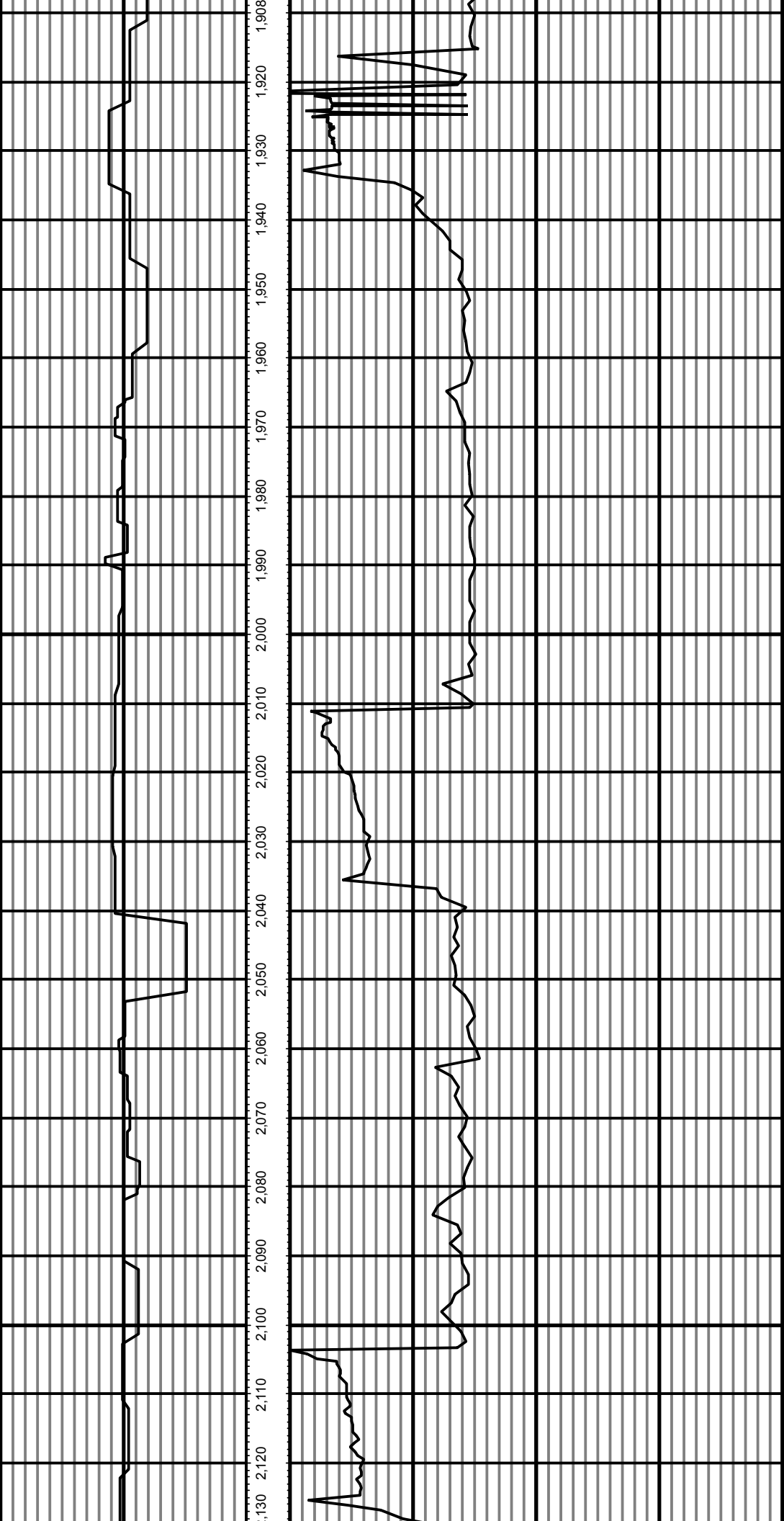
0.00      Gamma (API)      150.00      MD      0.00      ROP(FT/HR)      1,500.00  
 150.00      2      300.00      FT      1,500.00      2      3,000.00

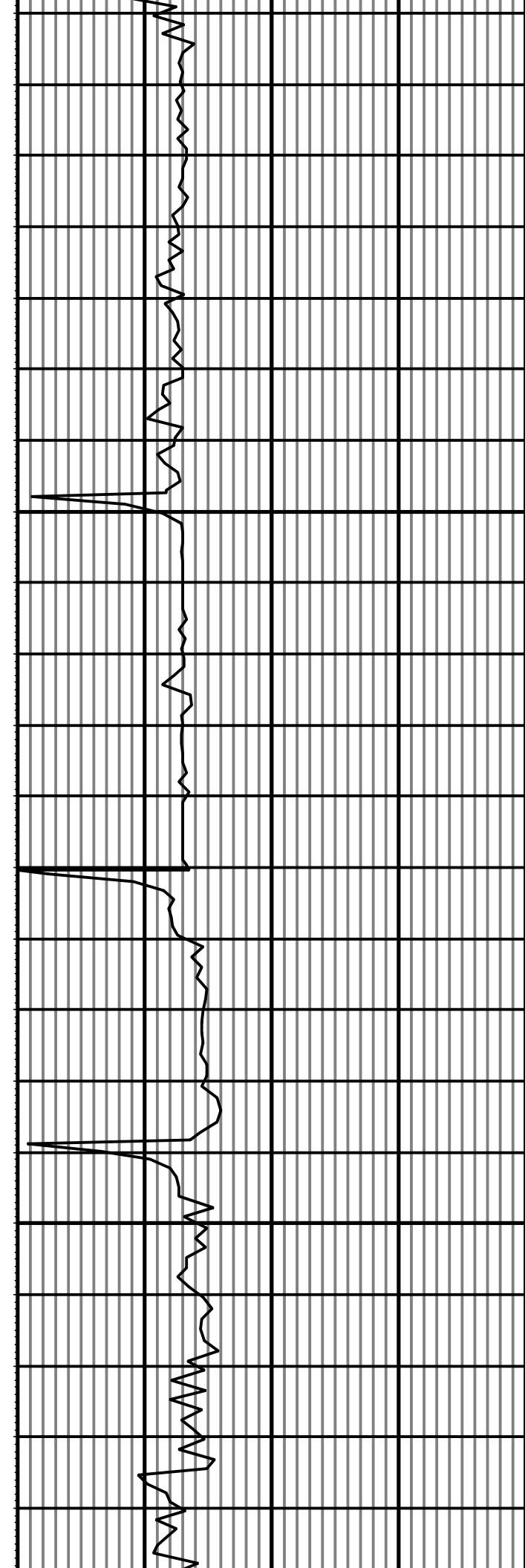
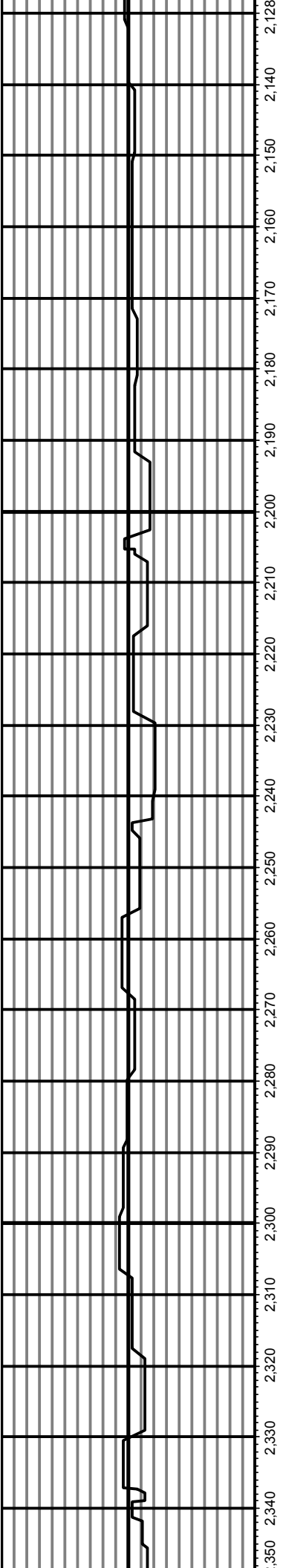


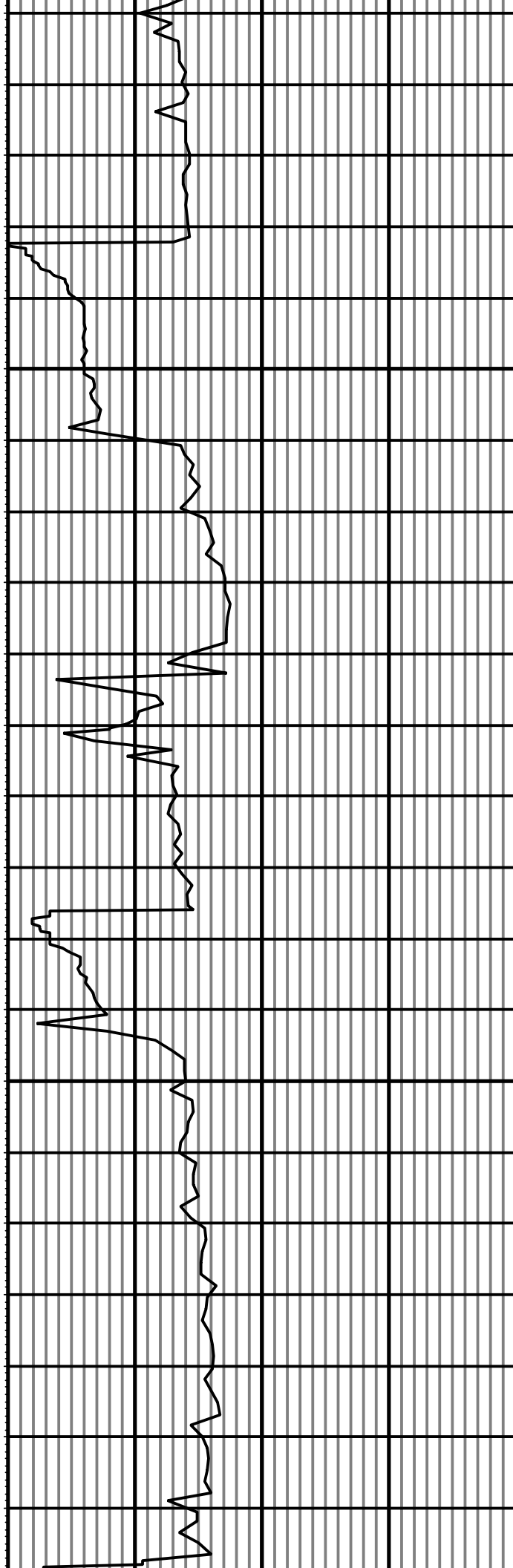
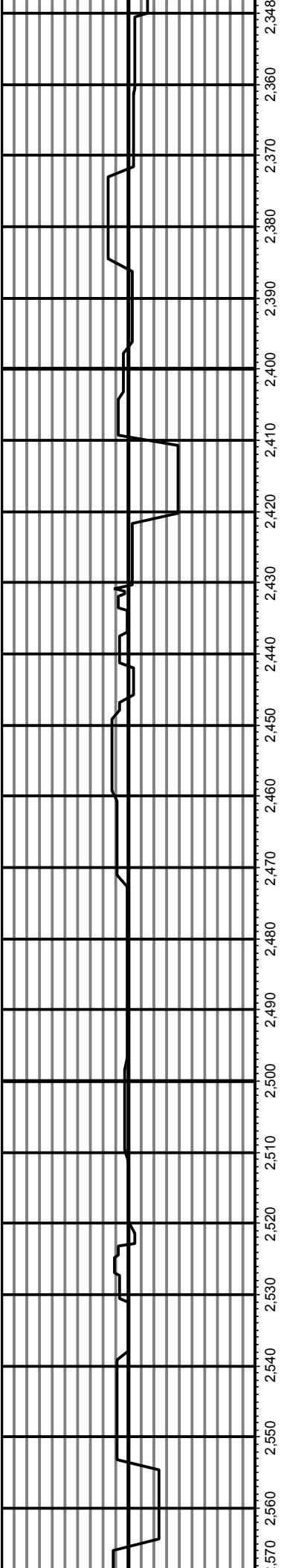


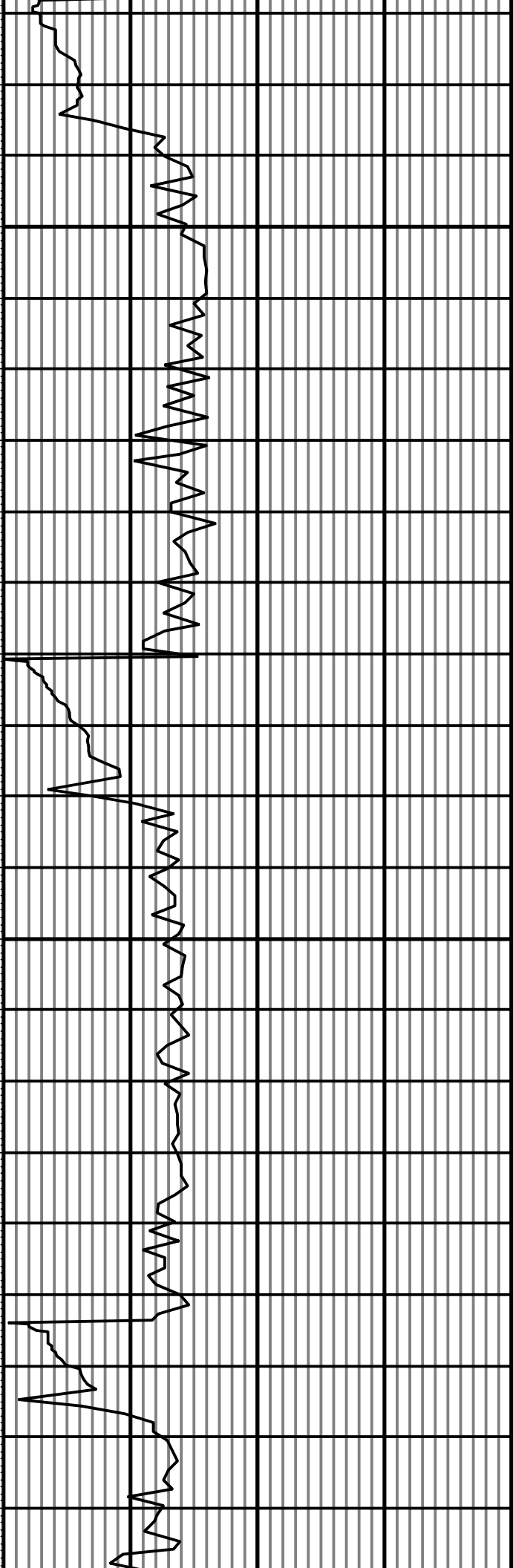
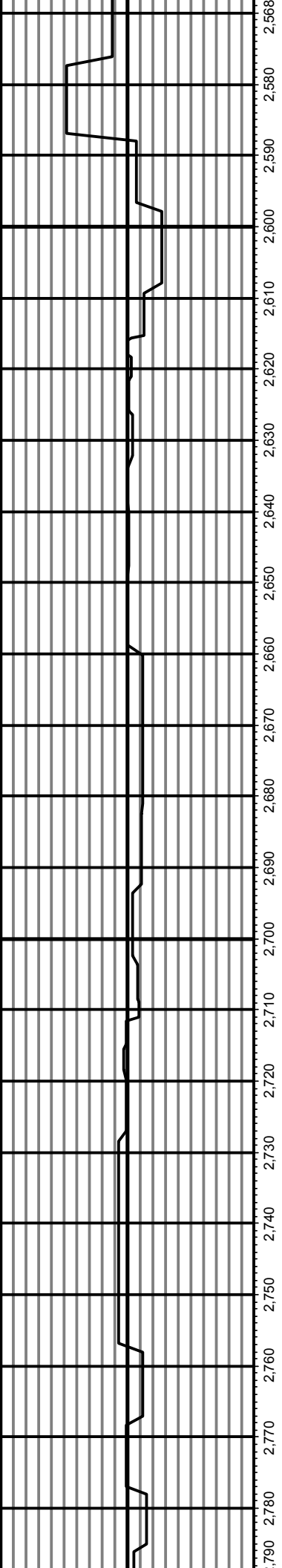


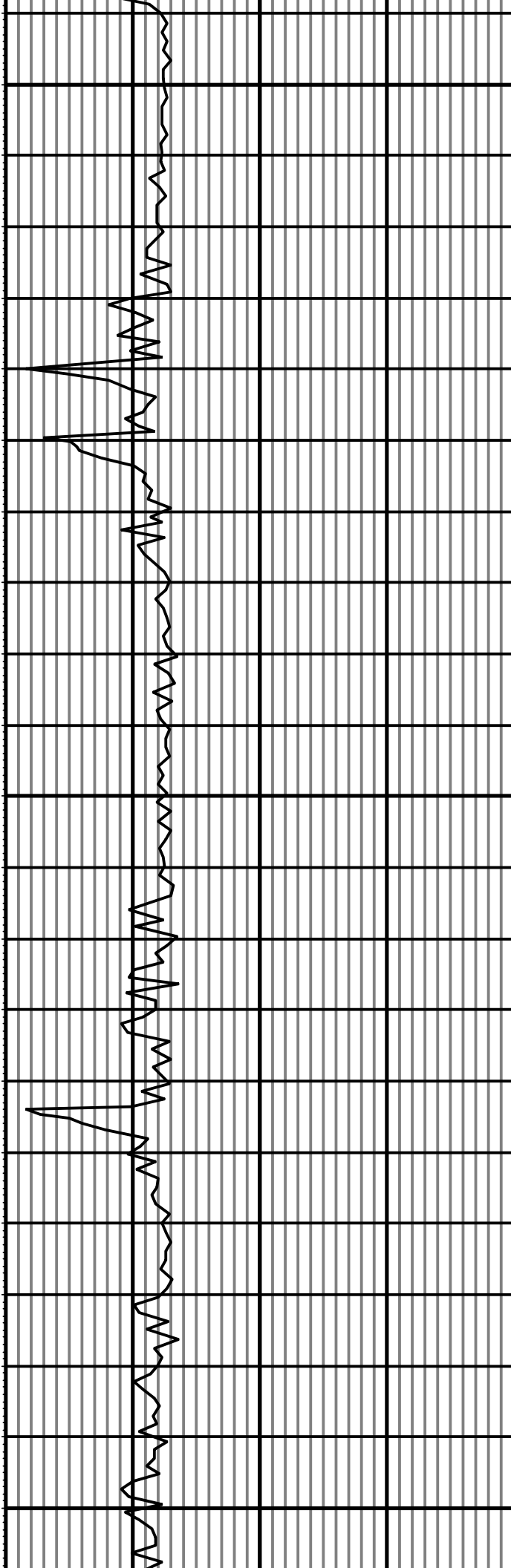
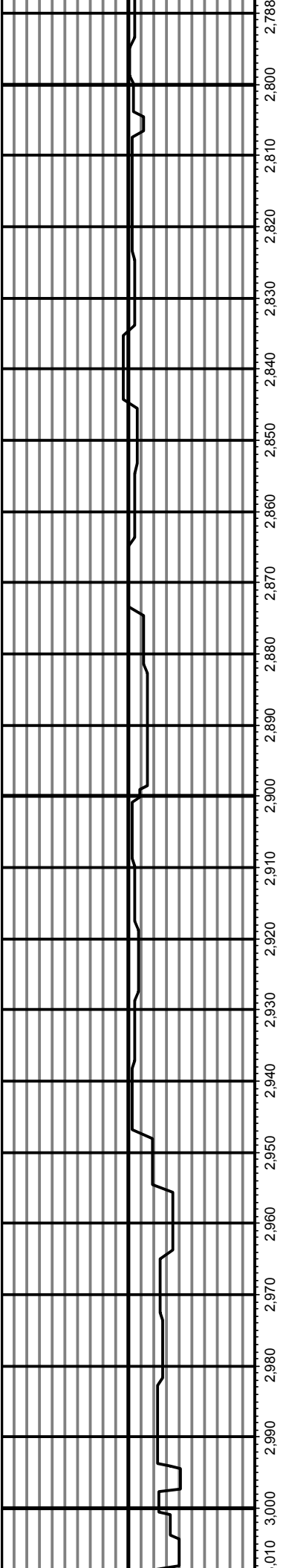


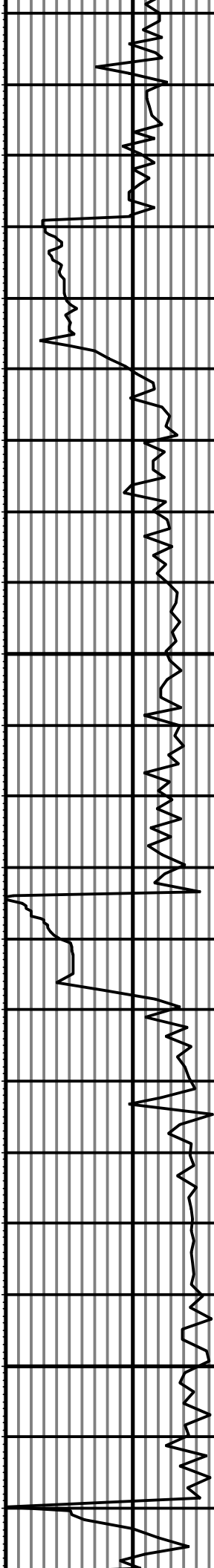
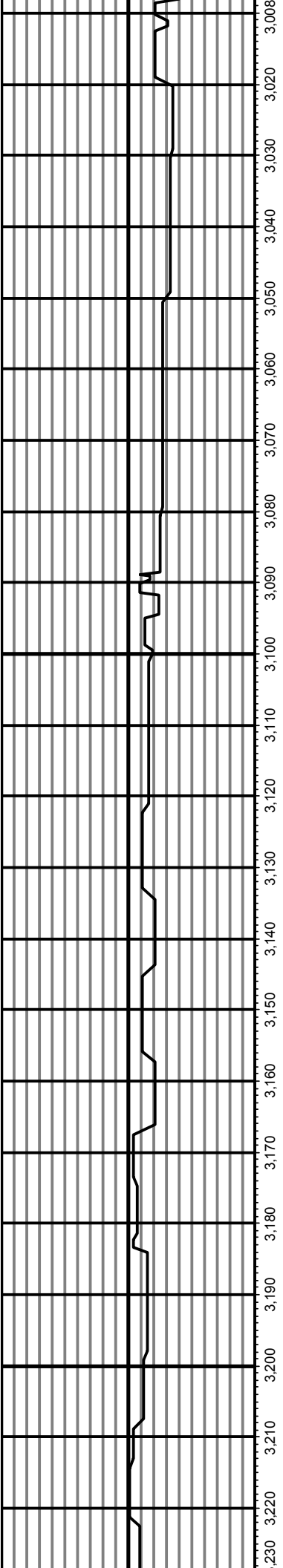


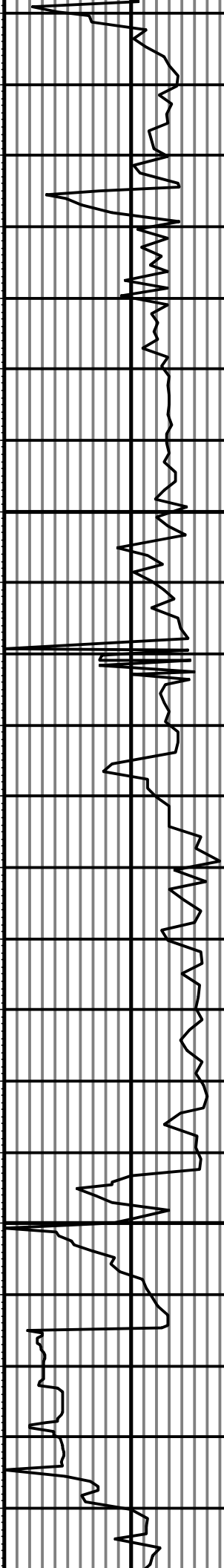
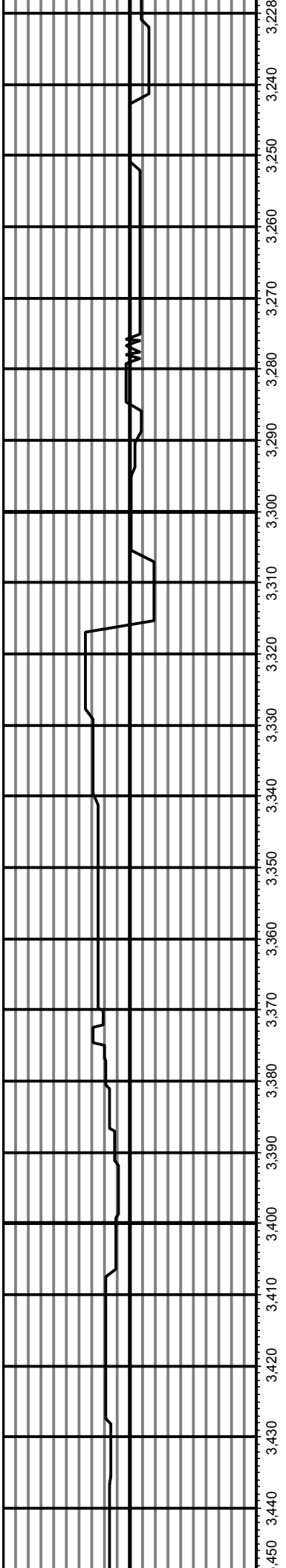


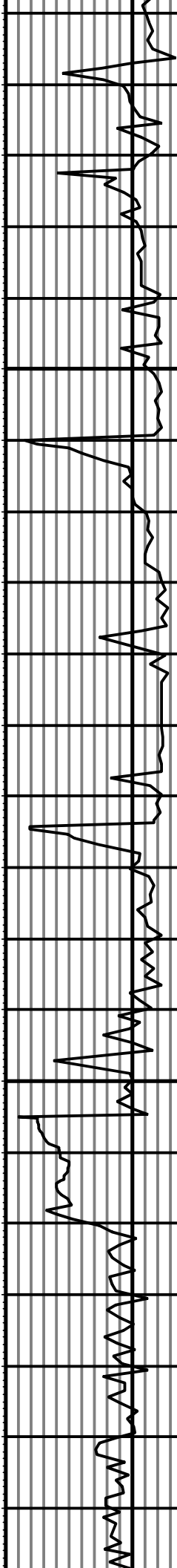
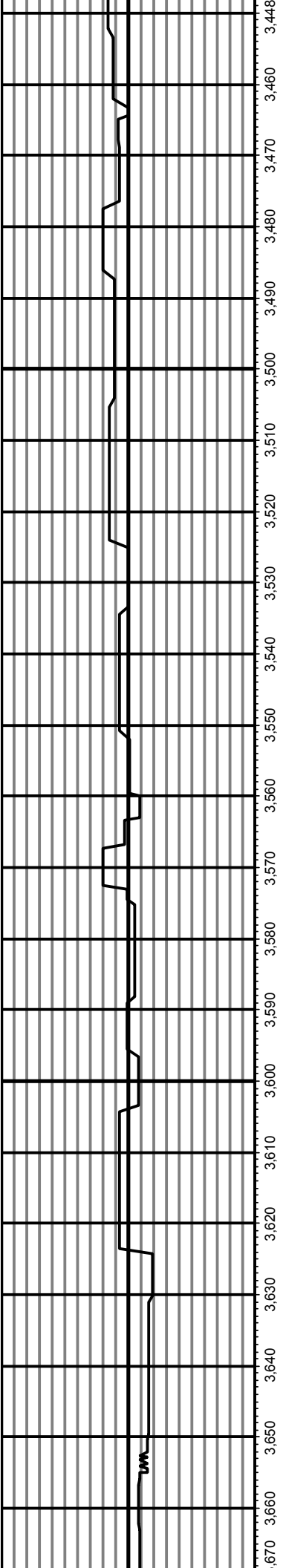


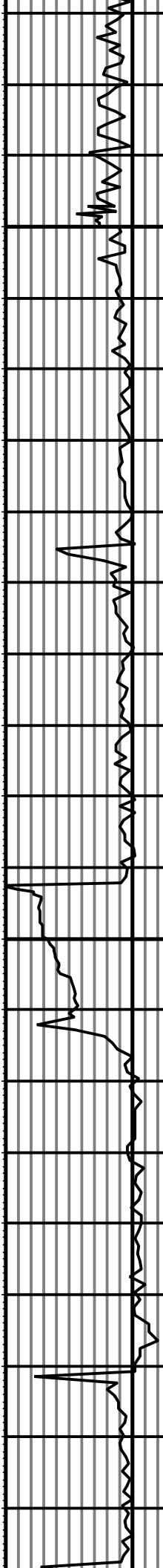
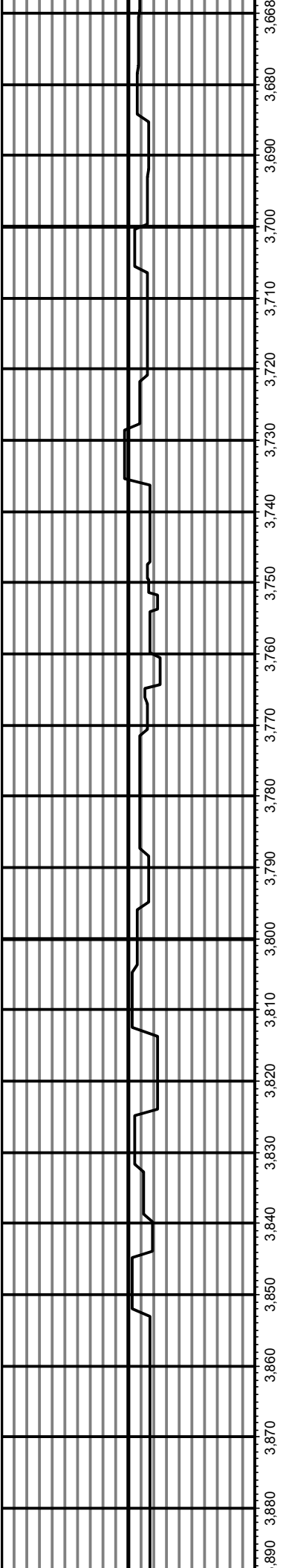


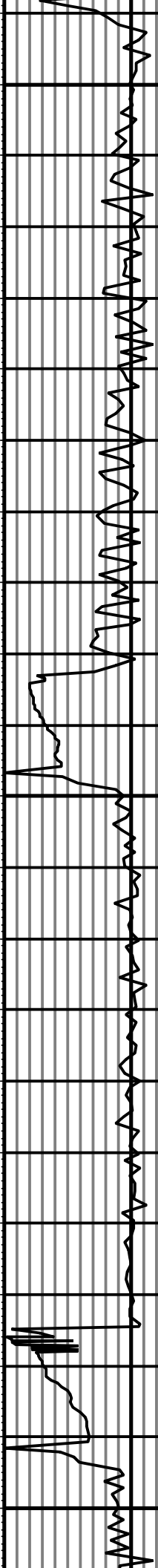
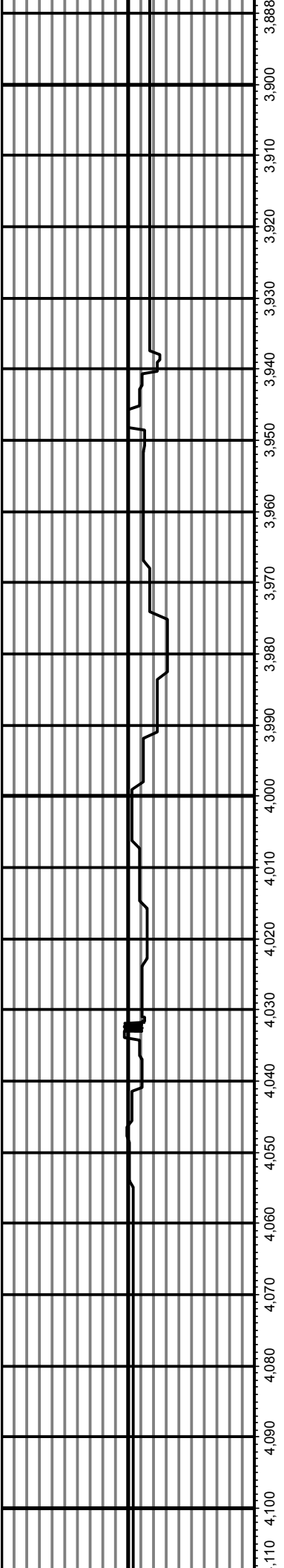


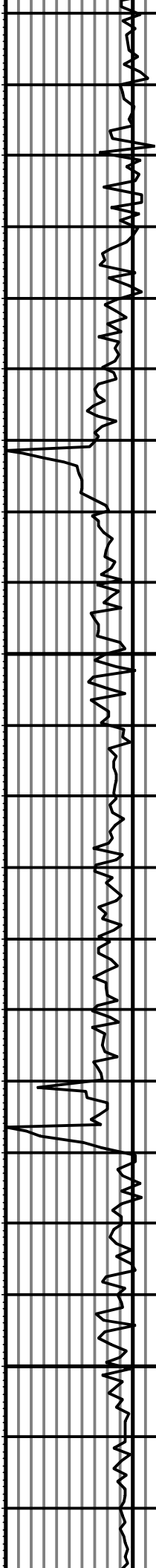
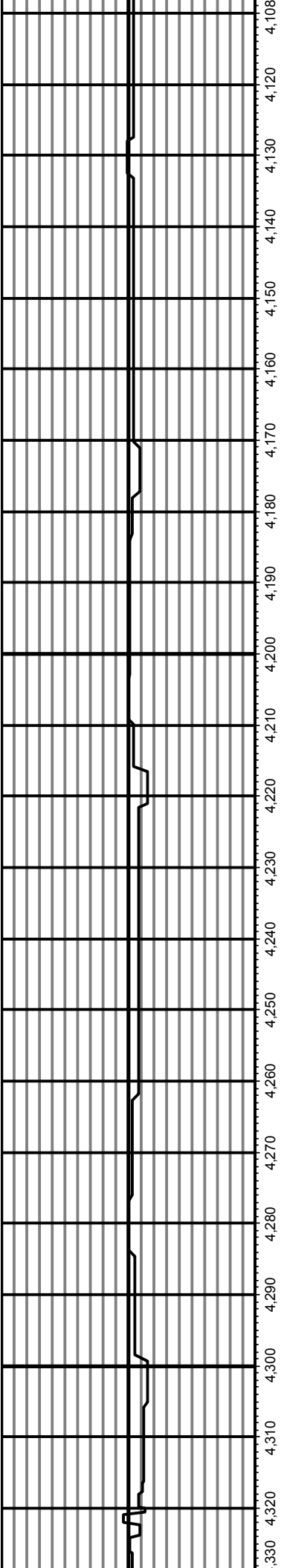


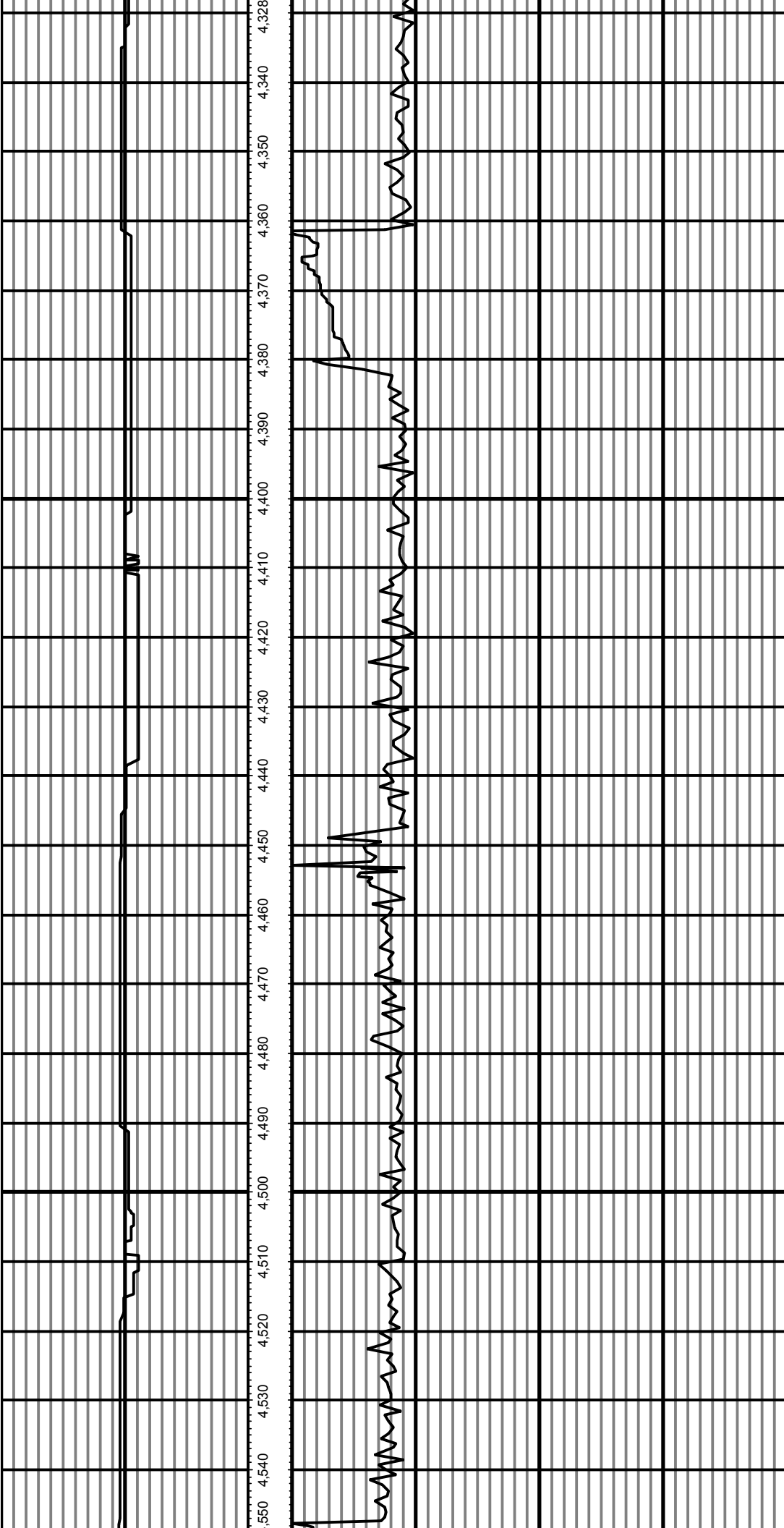


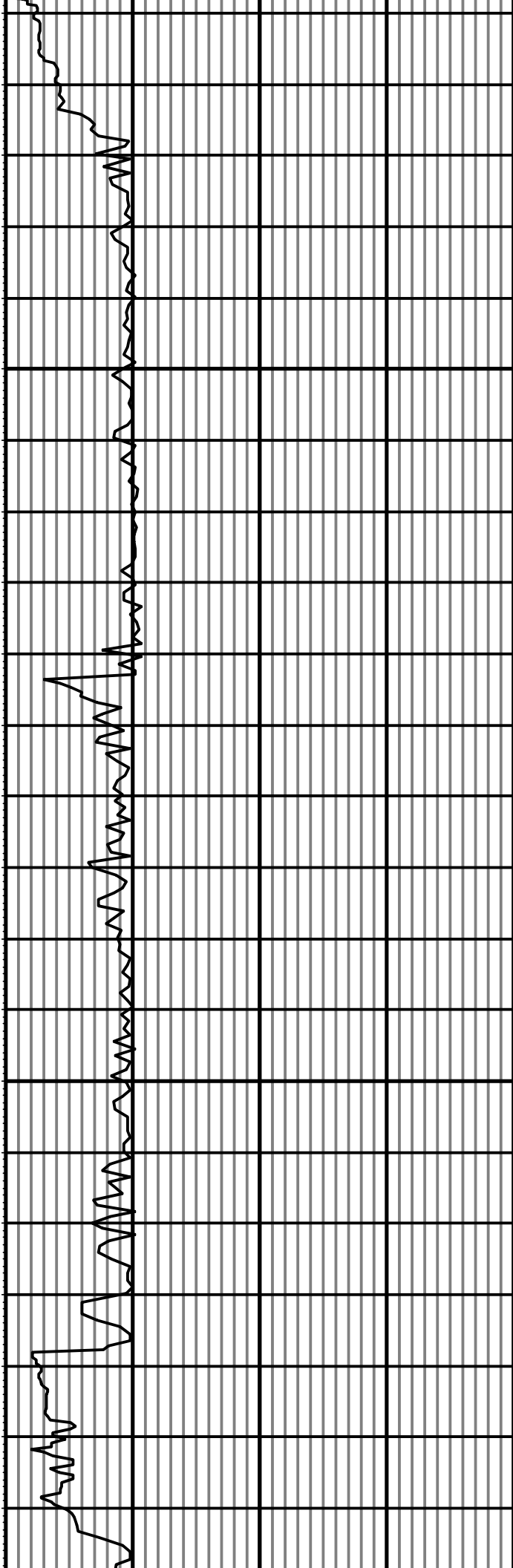
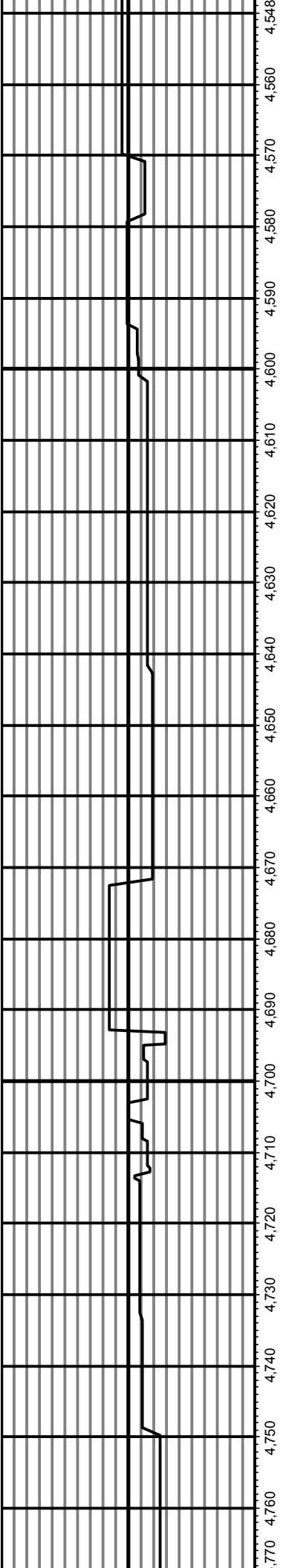


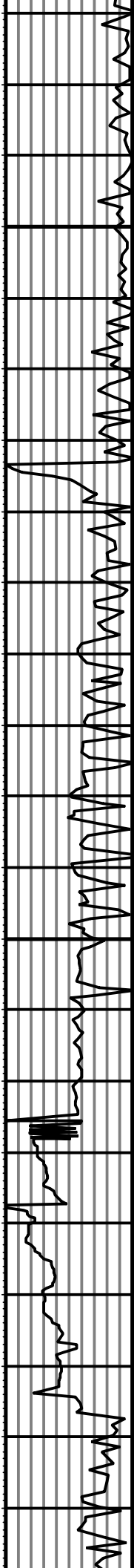
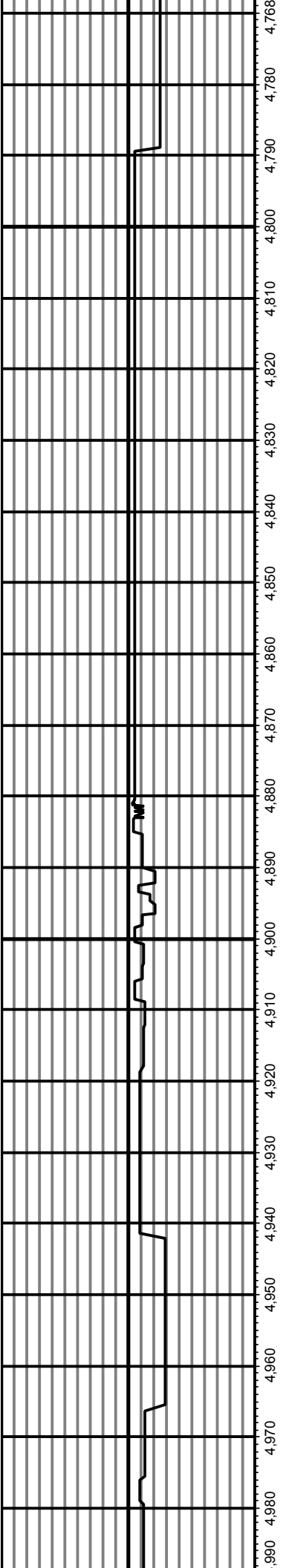


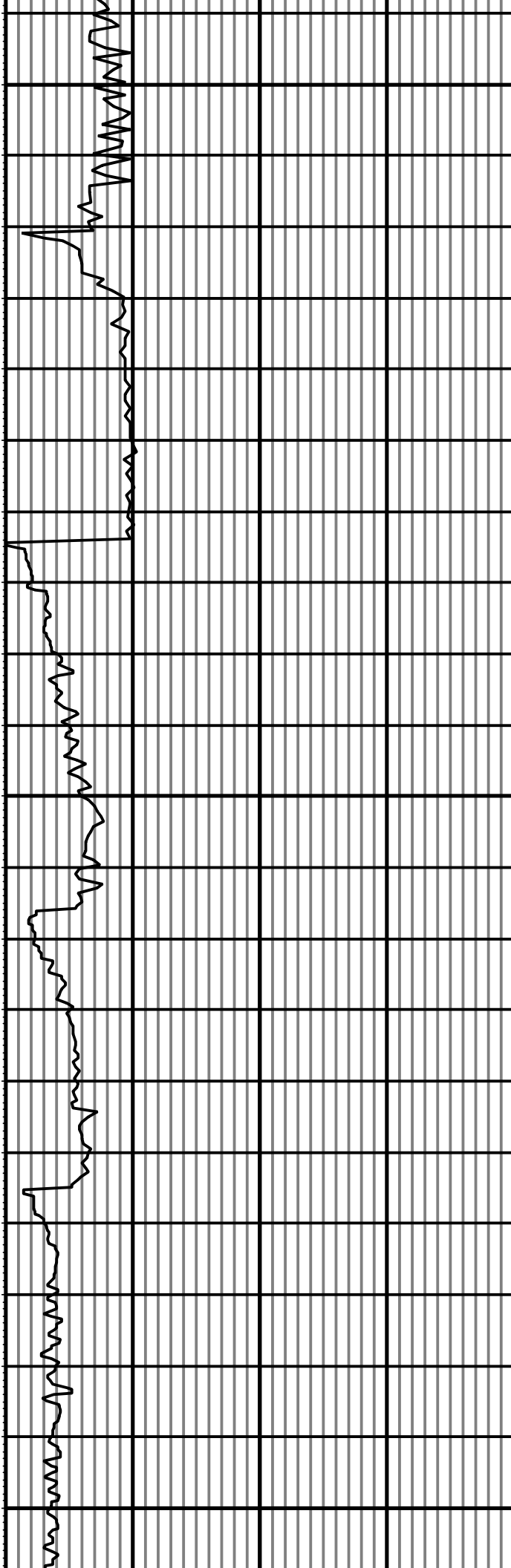
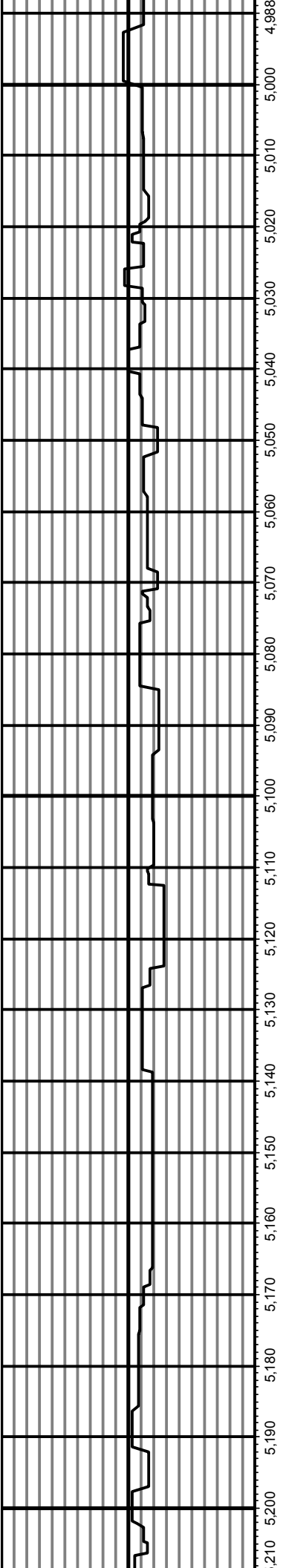


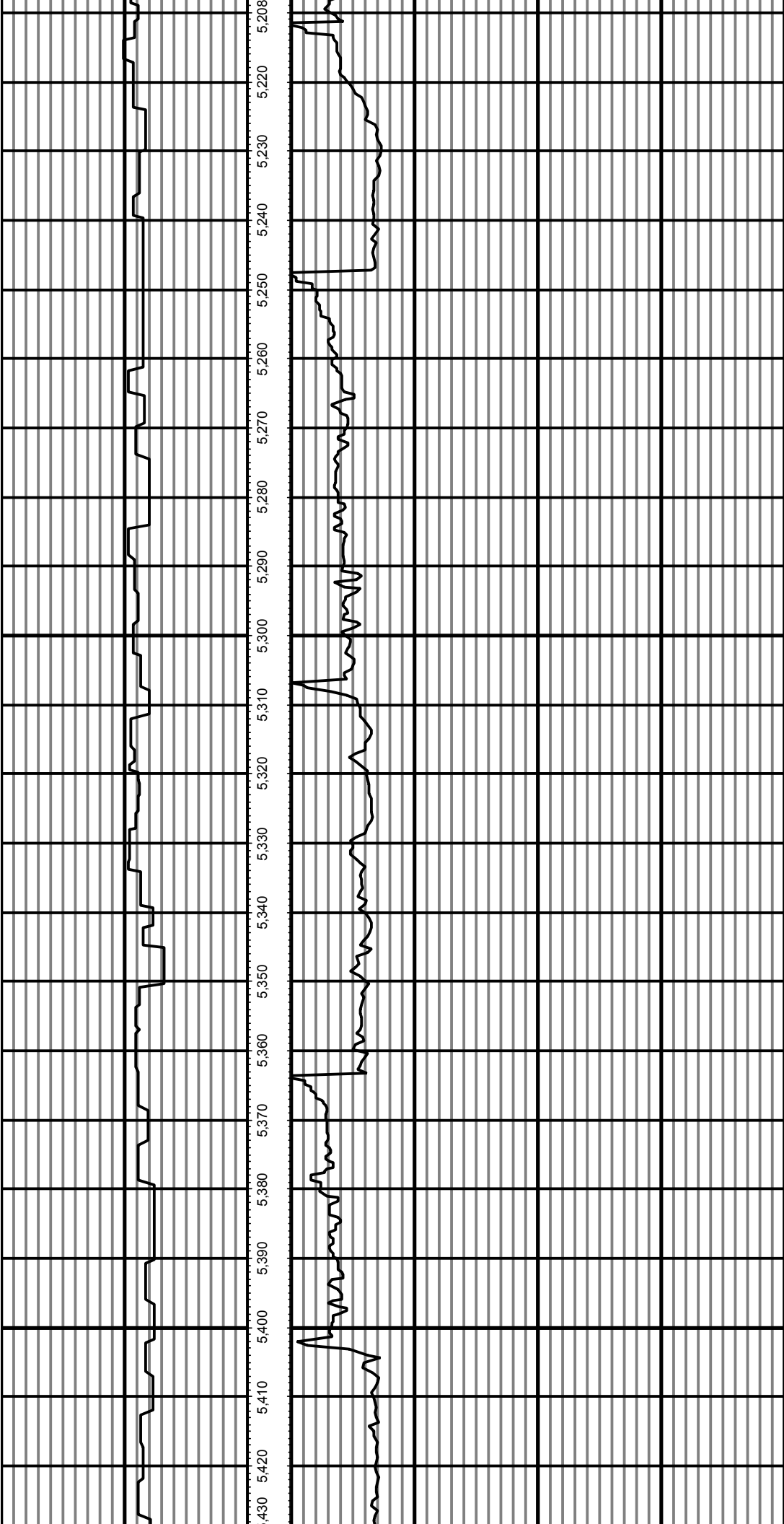


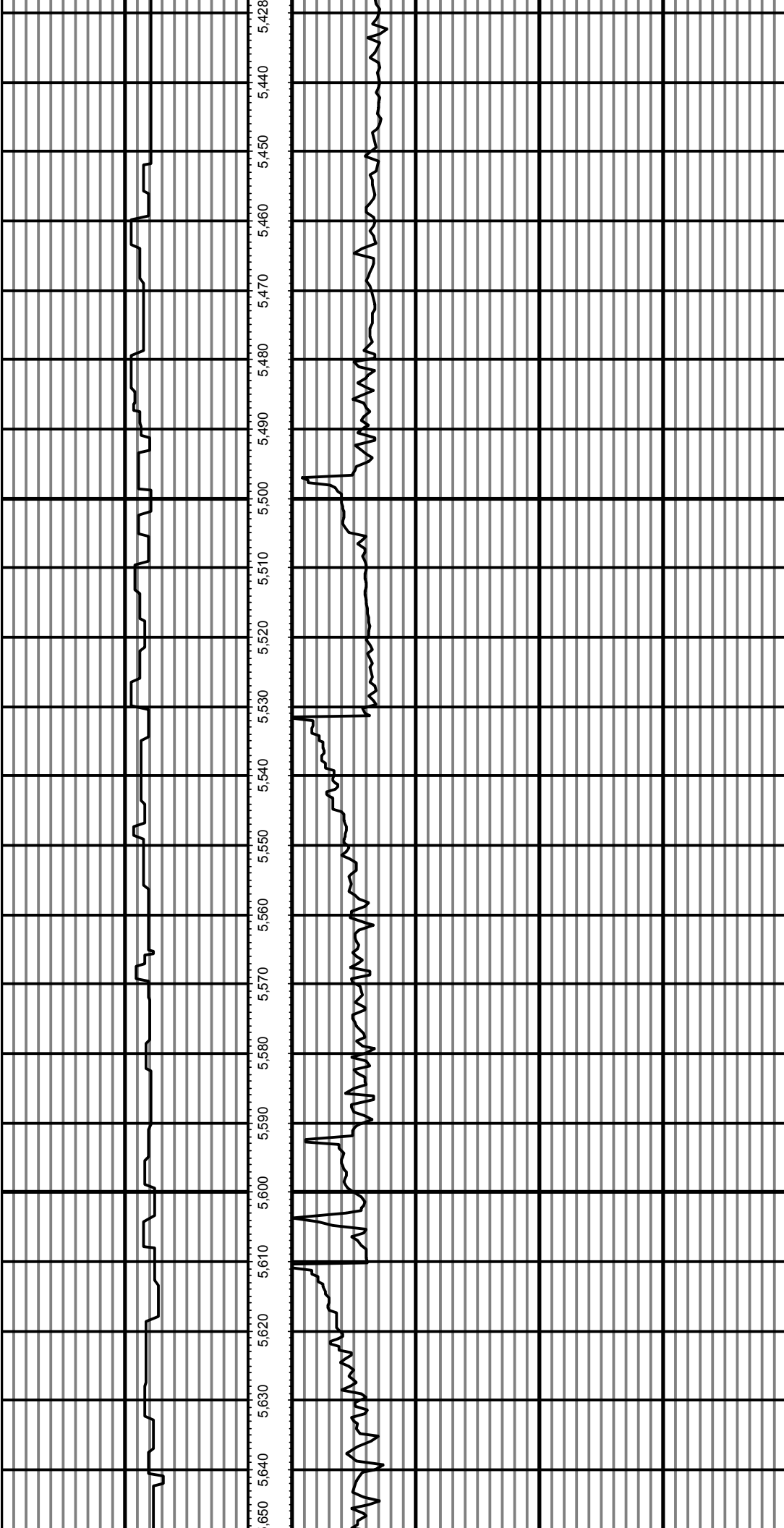


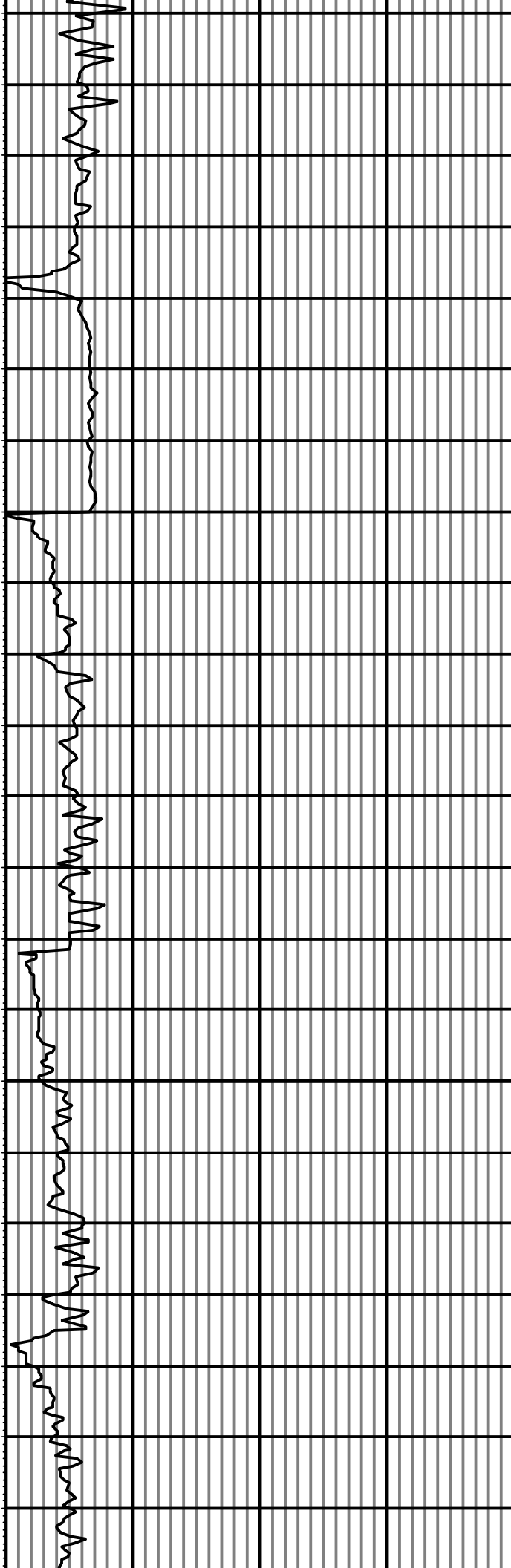
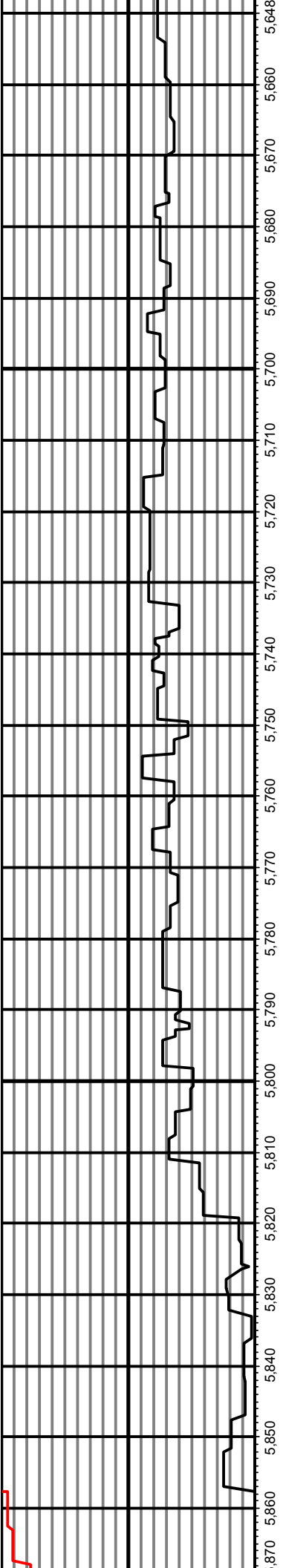


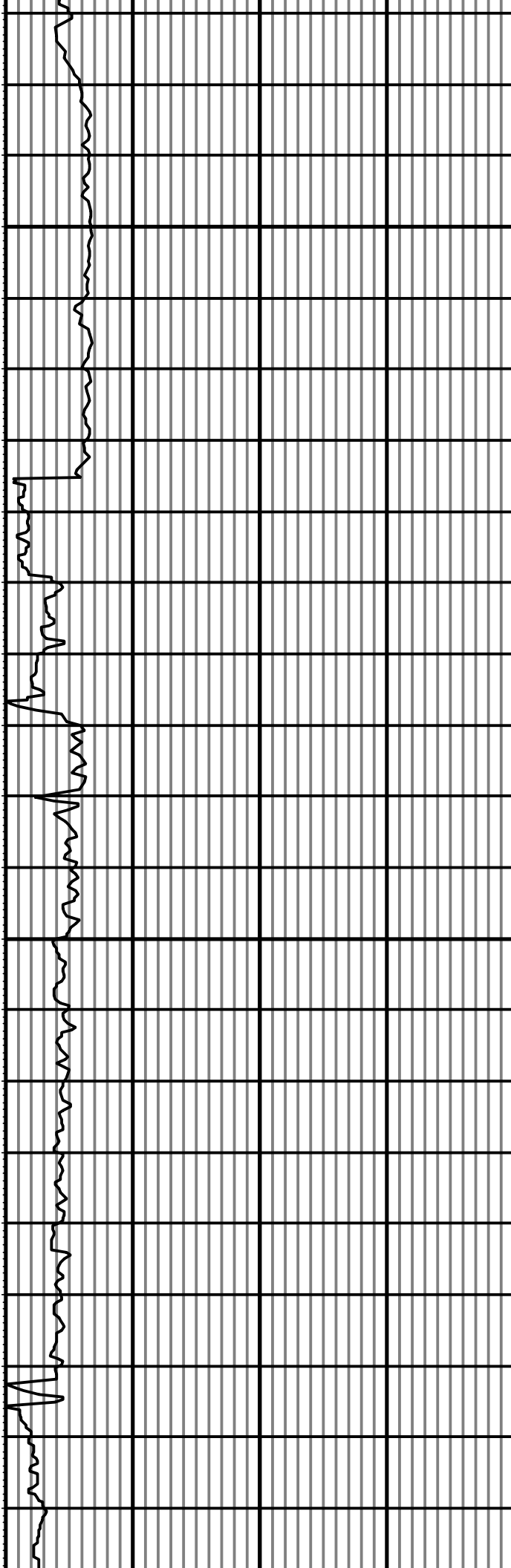
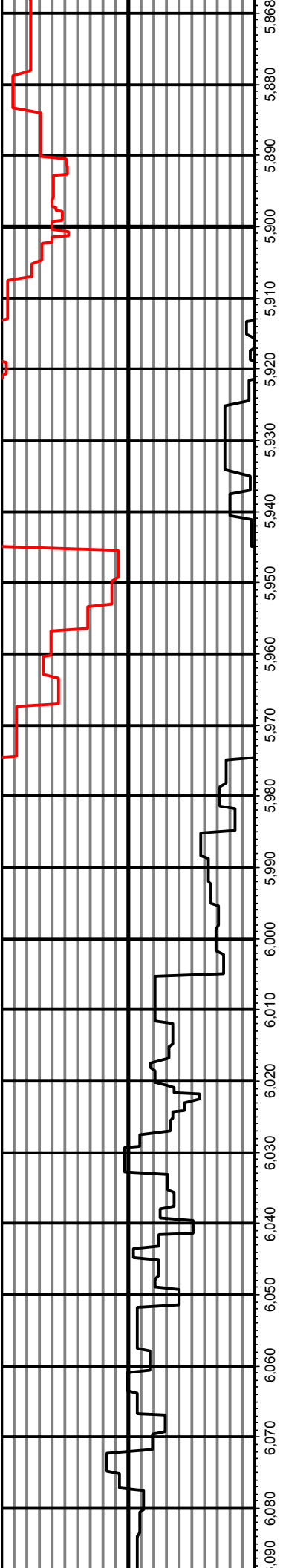


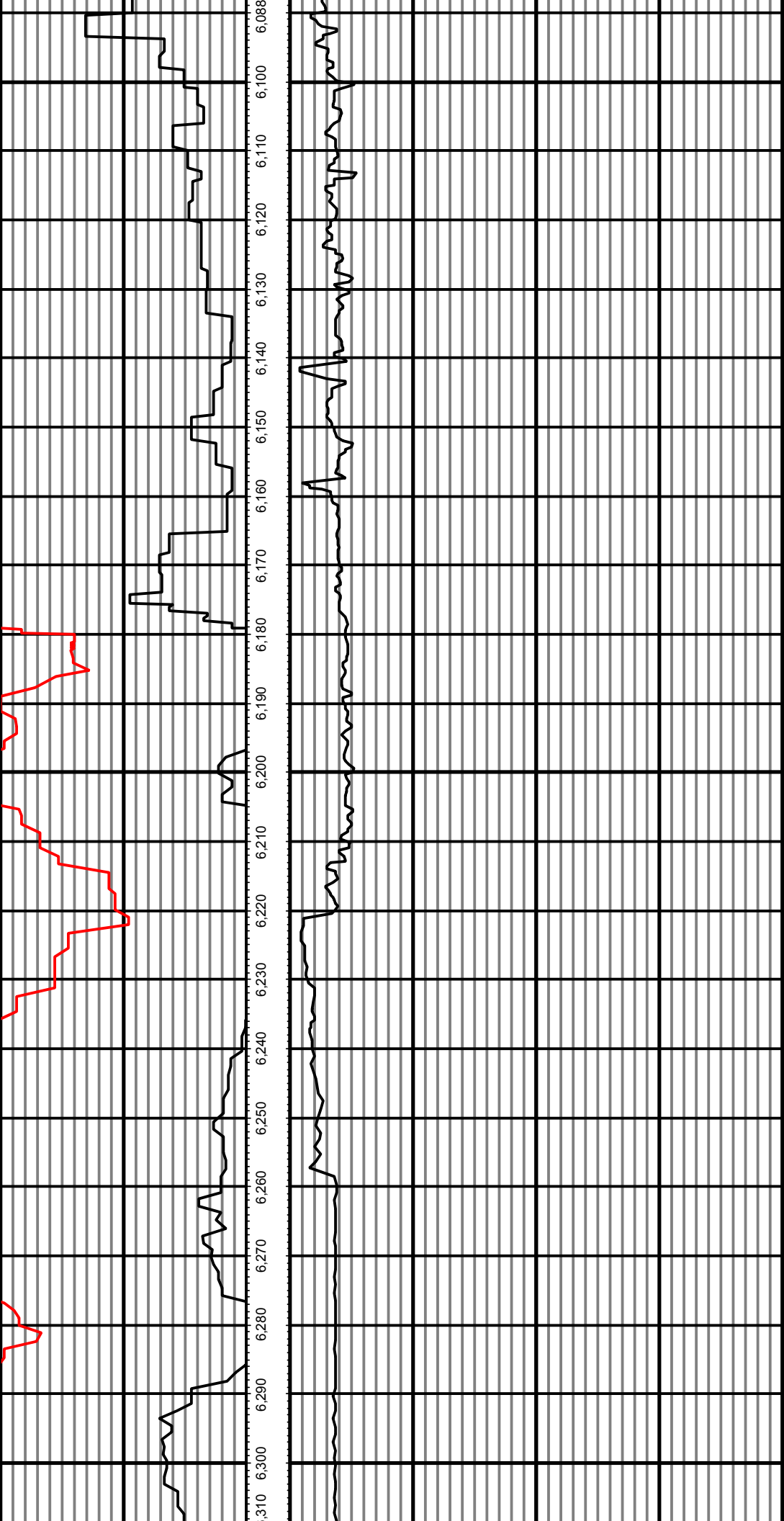


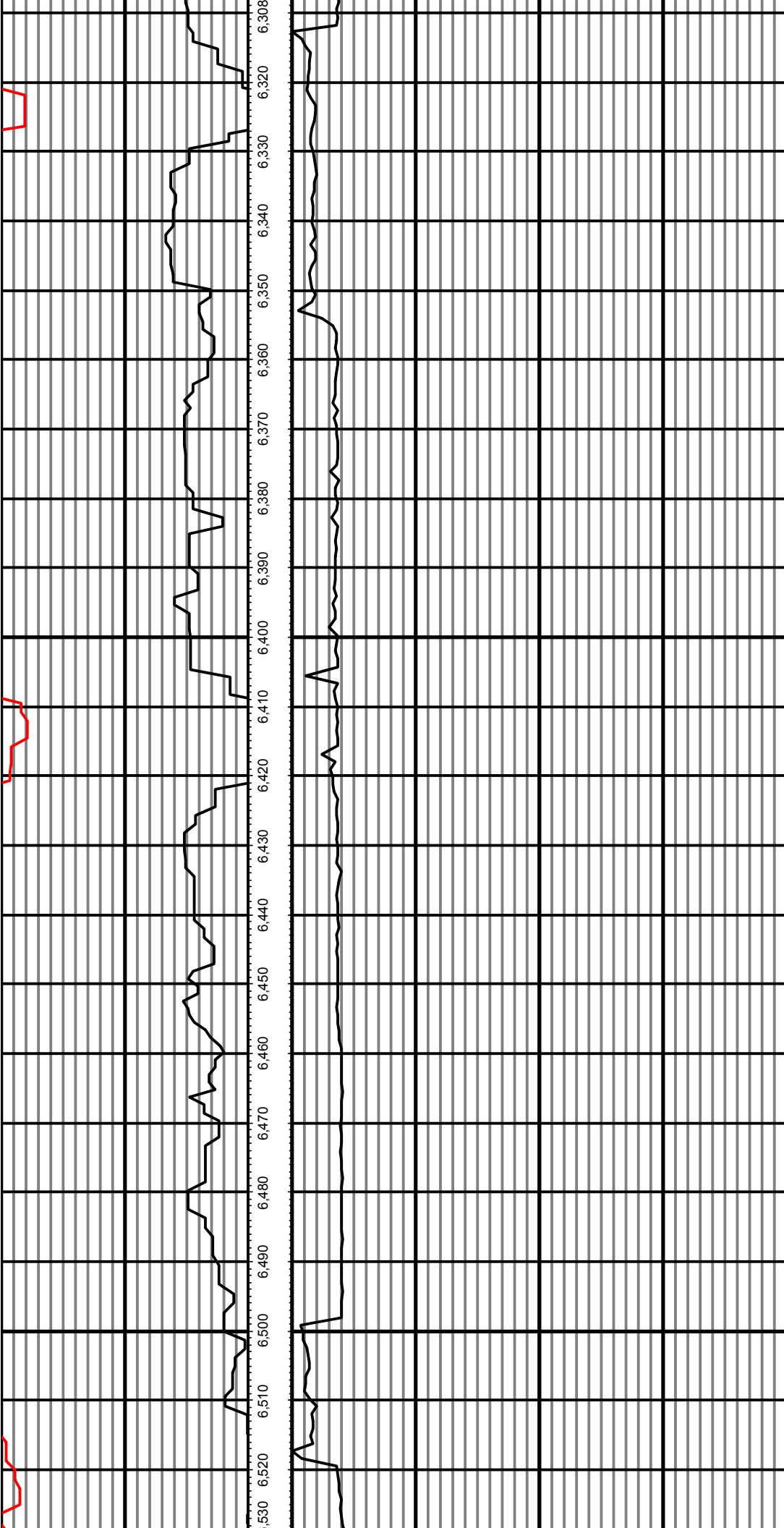


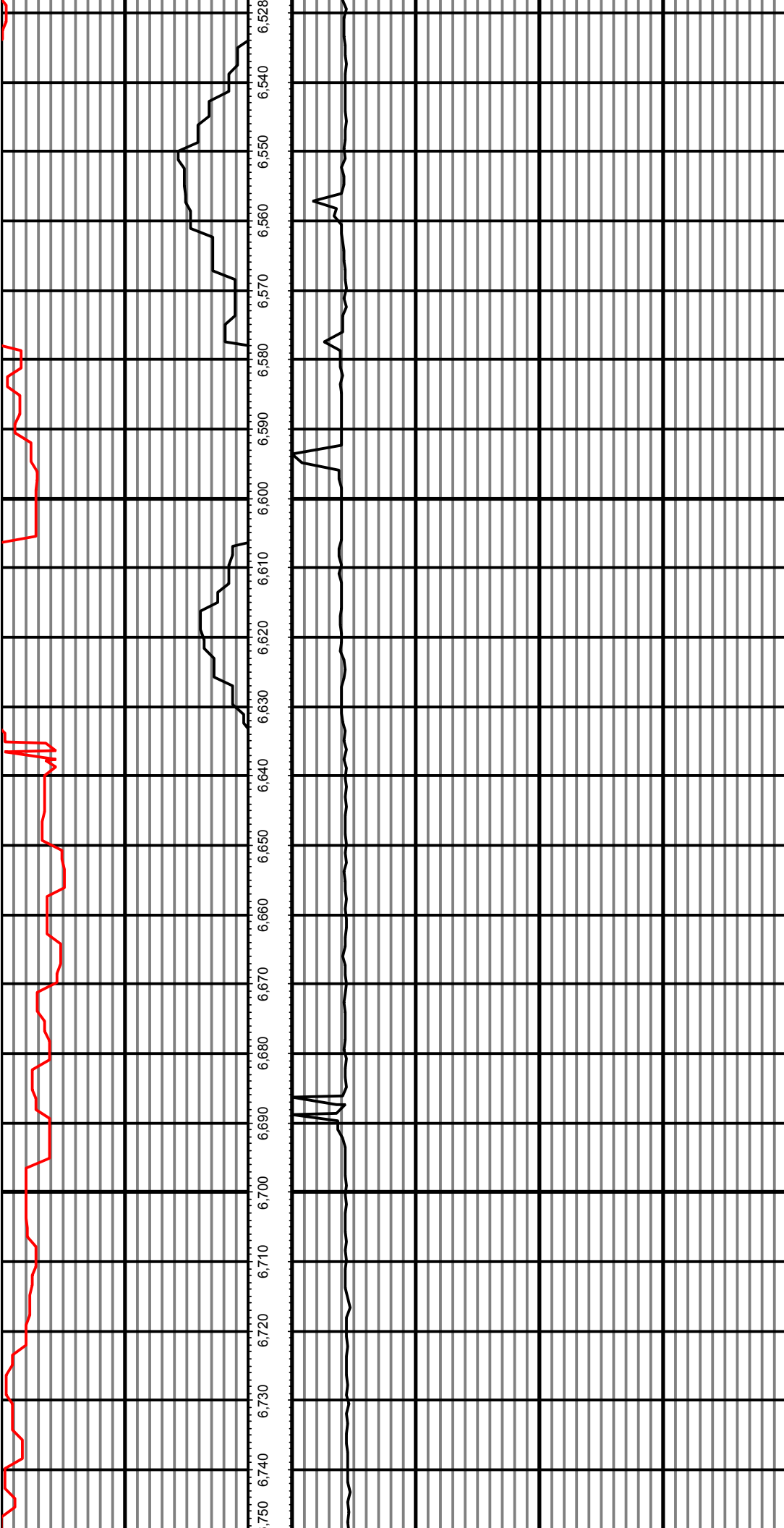


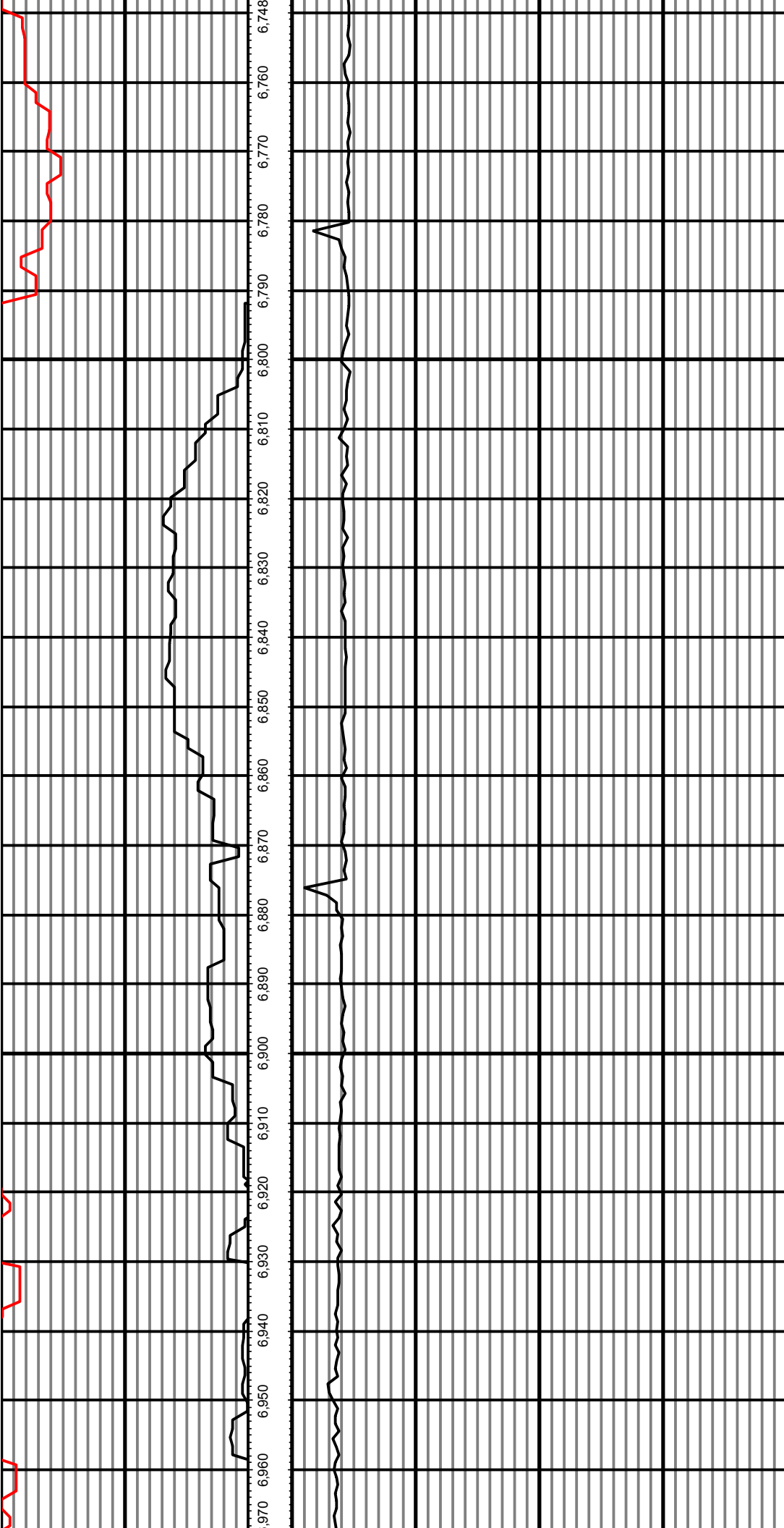


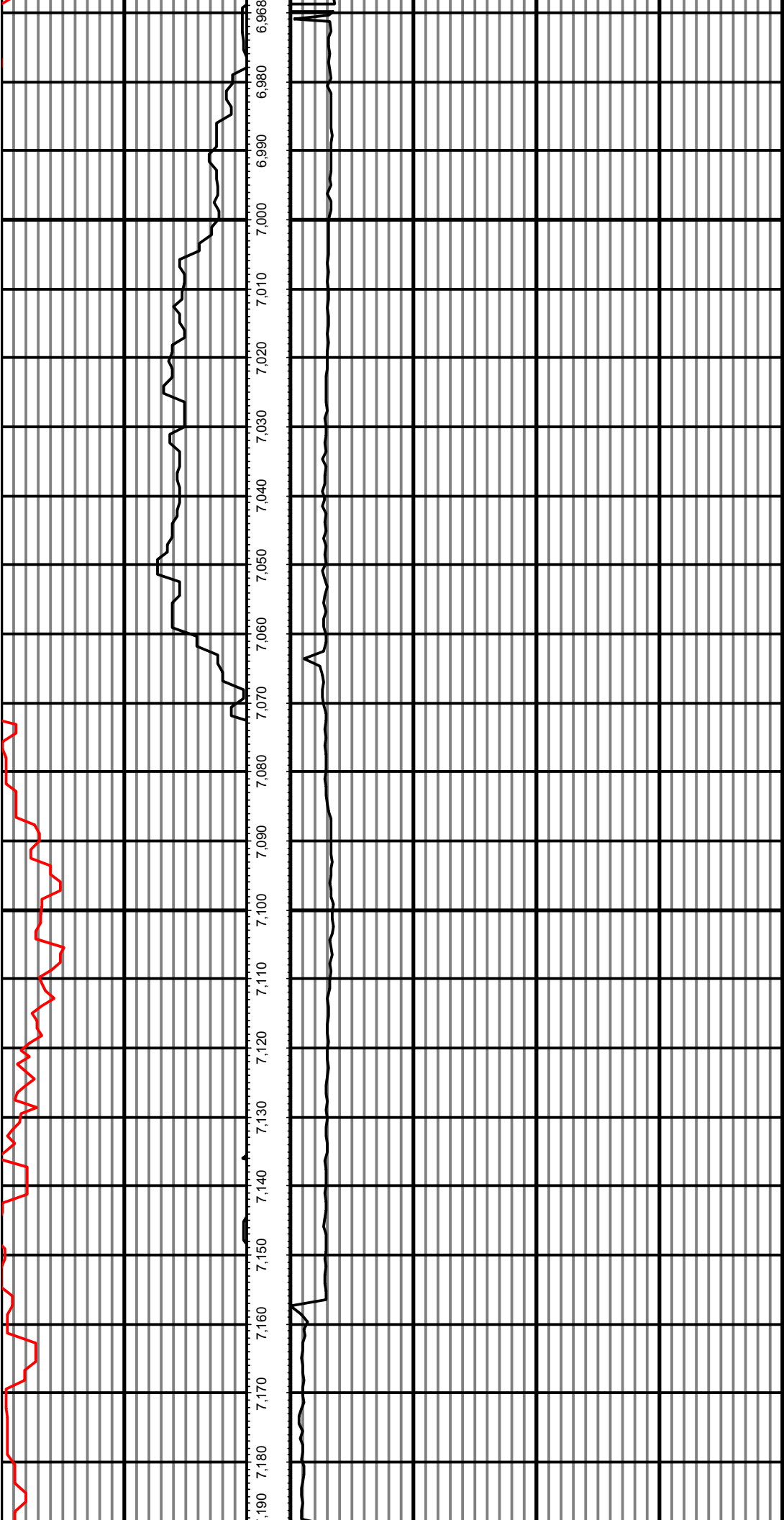


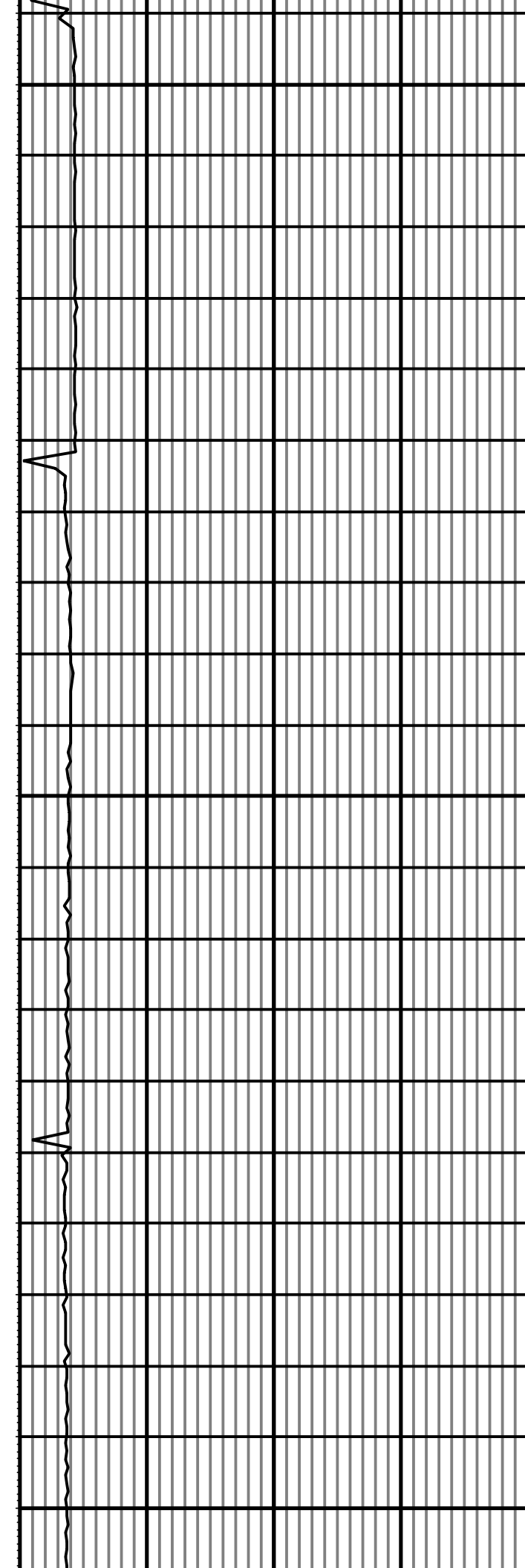
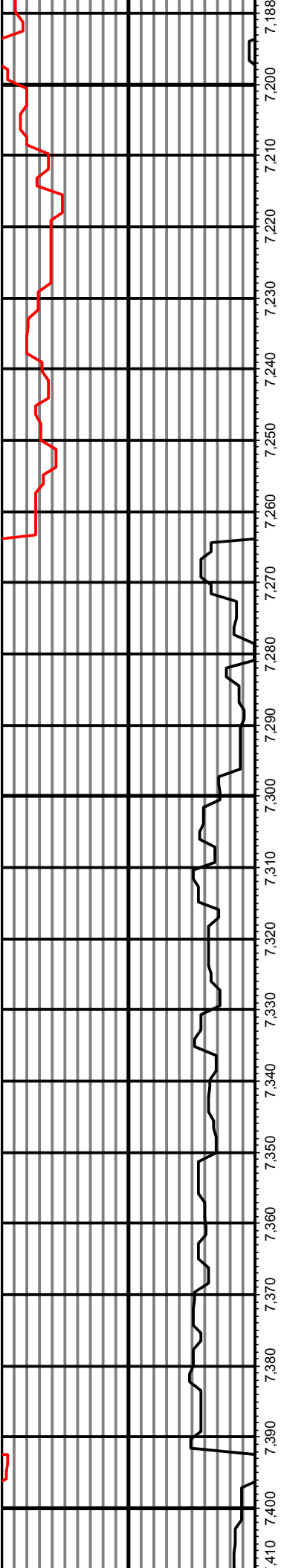


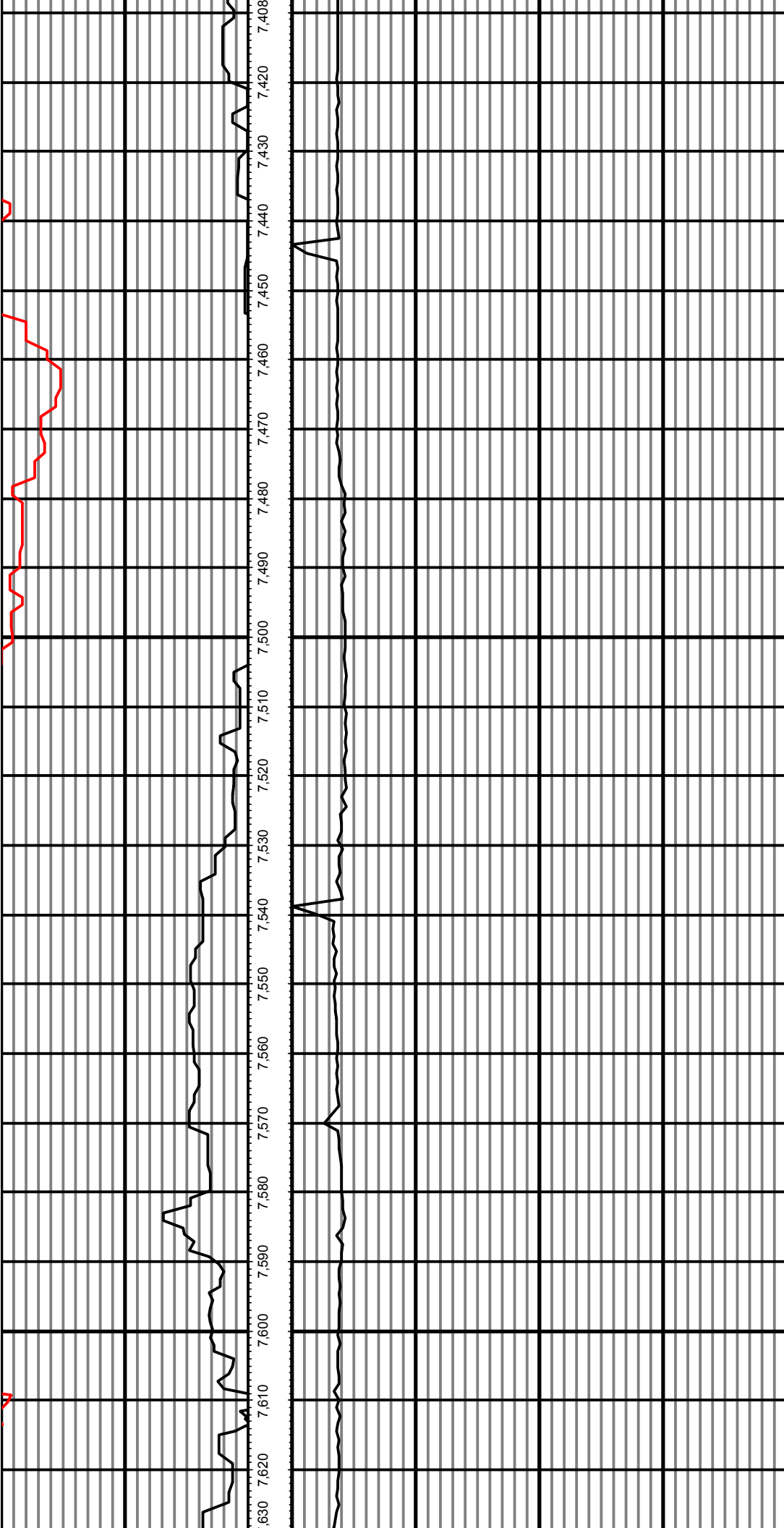


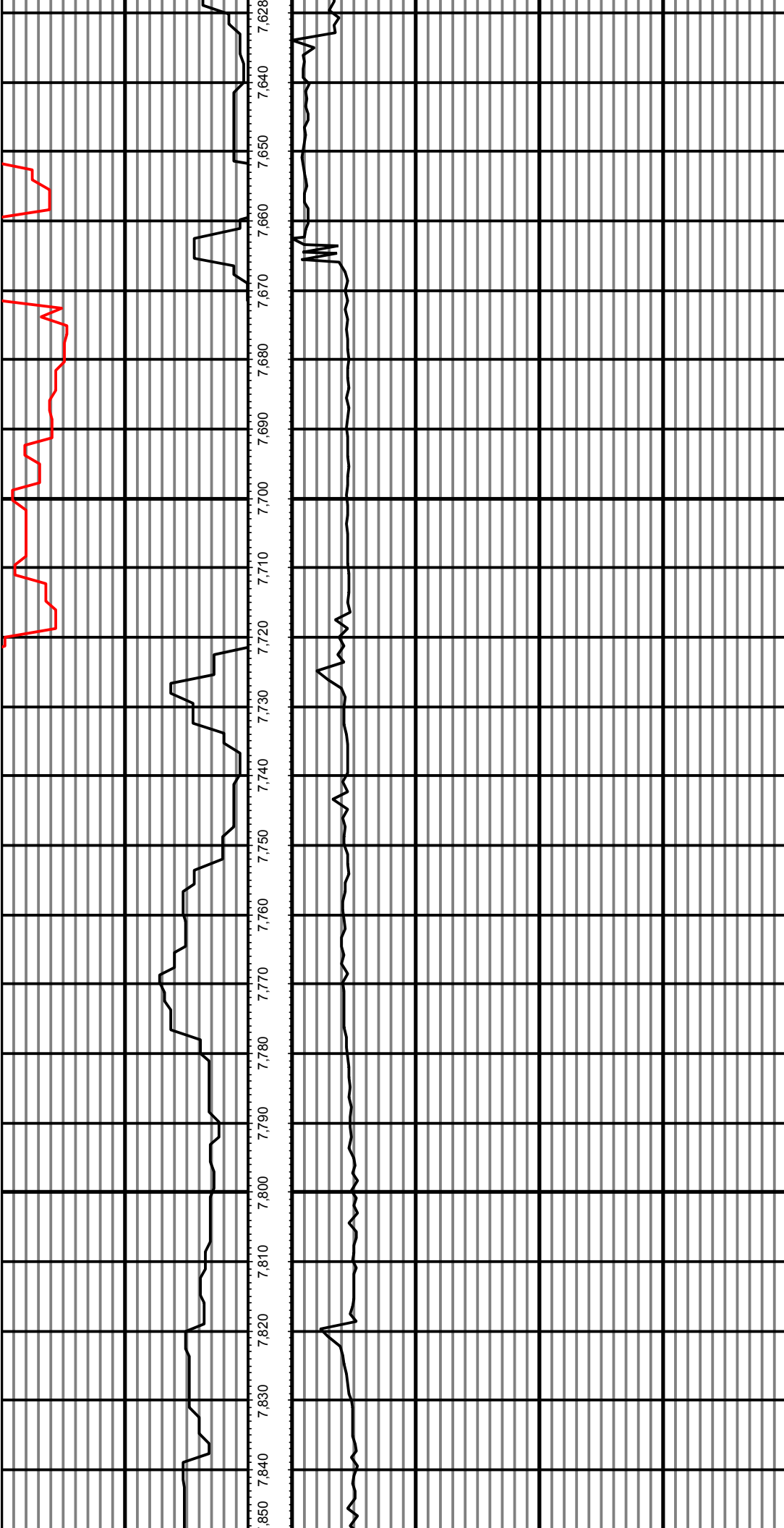


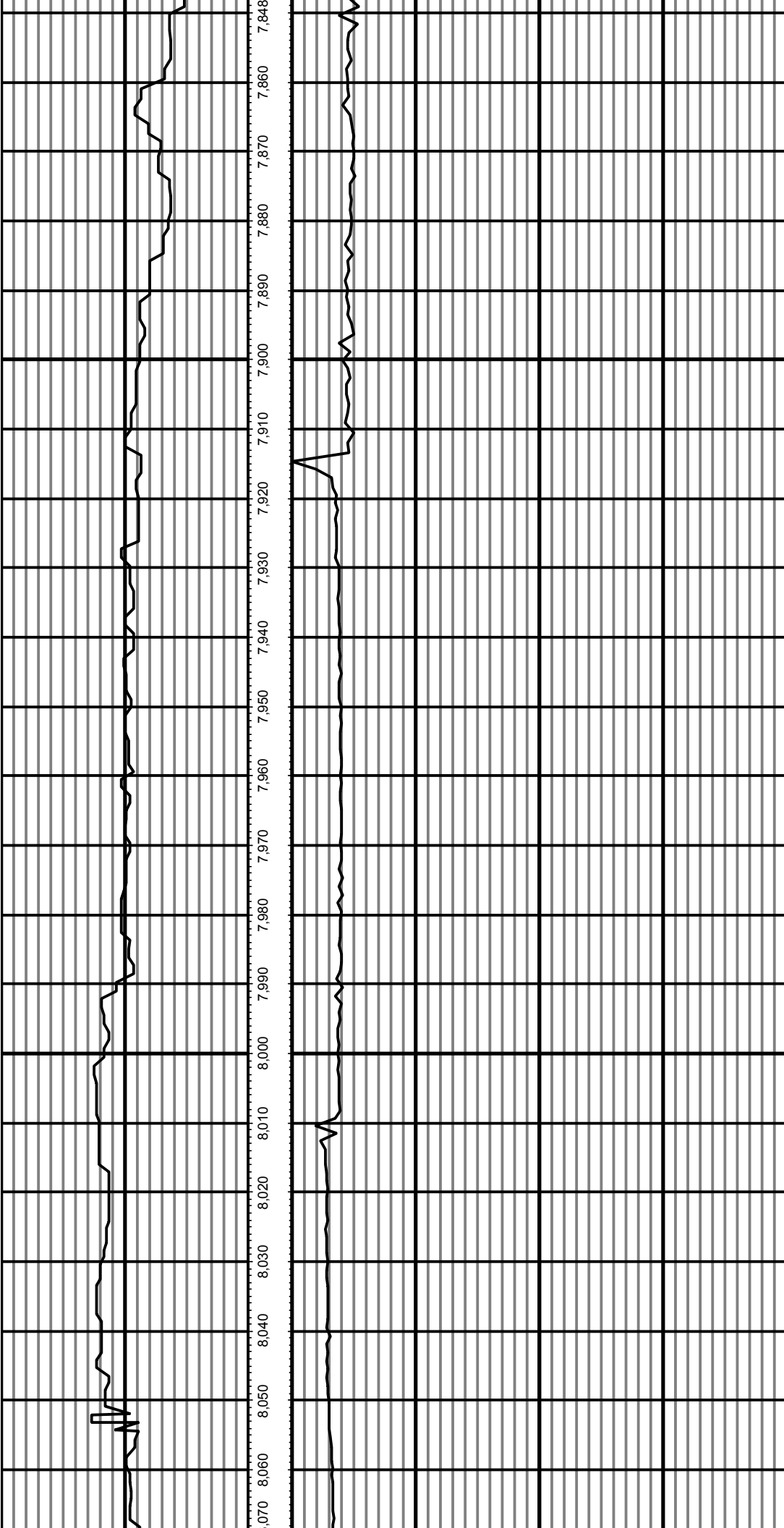


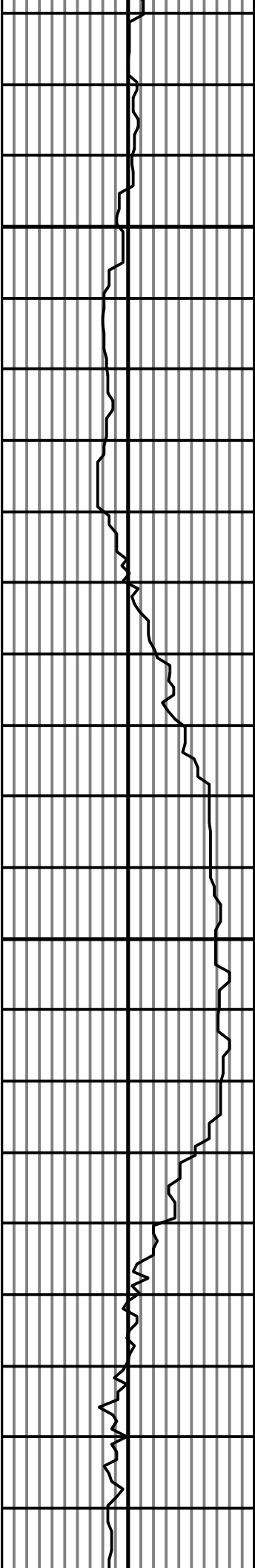












8,290 8,280 8,270 8,260 8,250 8,240 8,230 8,220 8,210 8,200 8,190 8,180 8,170 8,160 8,150 8,140 8,130 8,120 8,110 8,100 8,090 8,080

