

# **BONANZA CREEK ENERGY INC.**

**WELD COUNTY, COLORADO (NAD 83)**

**NE NE SEC. 6 T4N R62W 6th P.M.**

**STATE SEVENTY HOLES U-Y-6HNB**

**ORIGINAL WELLBORE**

**21 December, 2014**

**Plan: PROPOSAL #1**



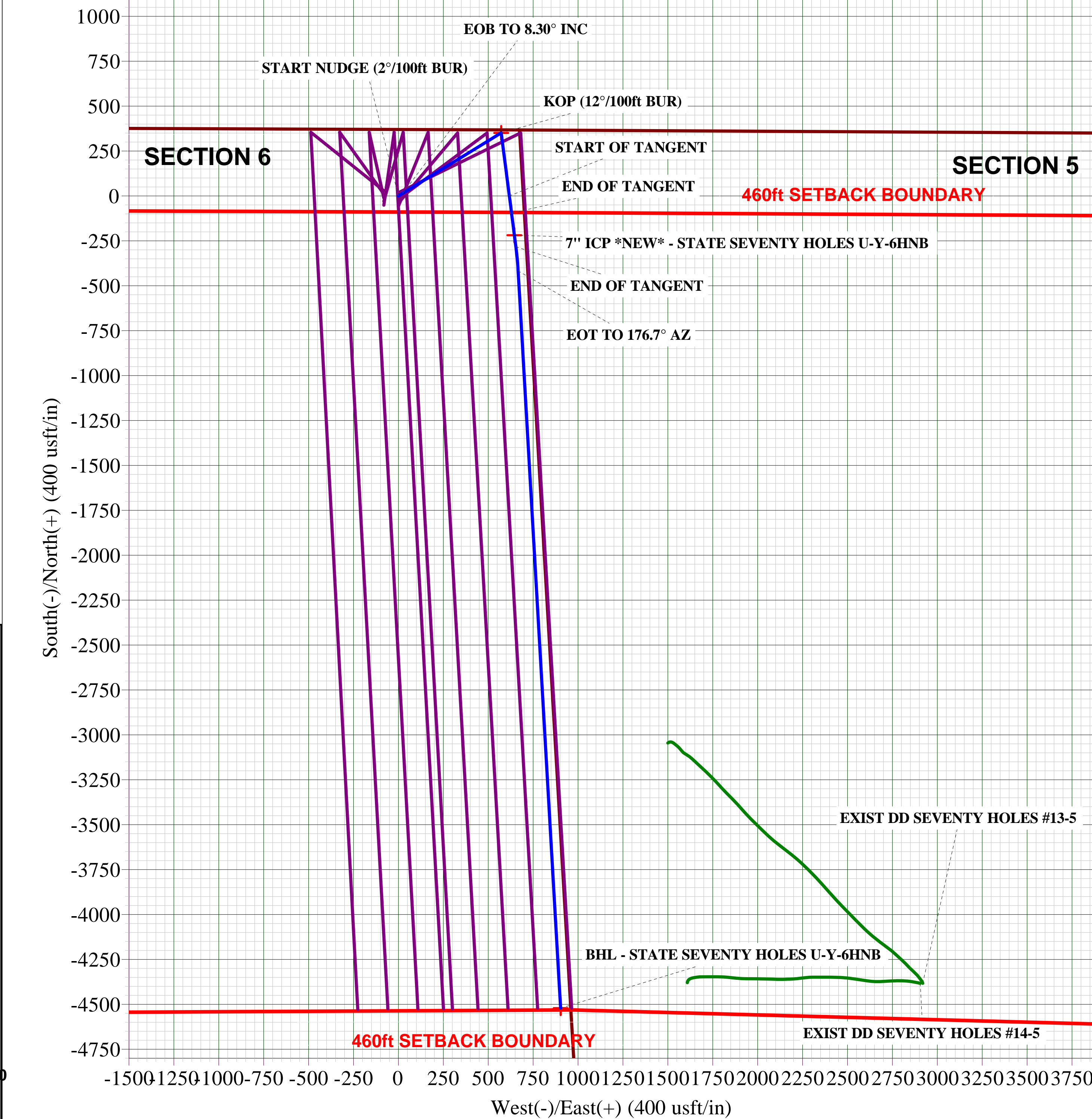
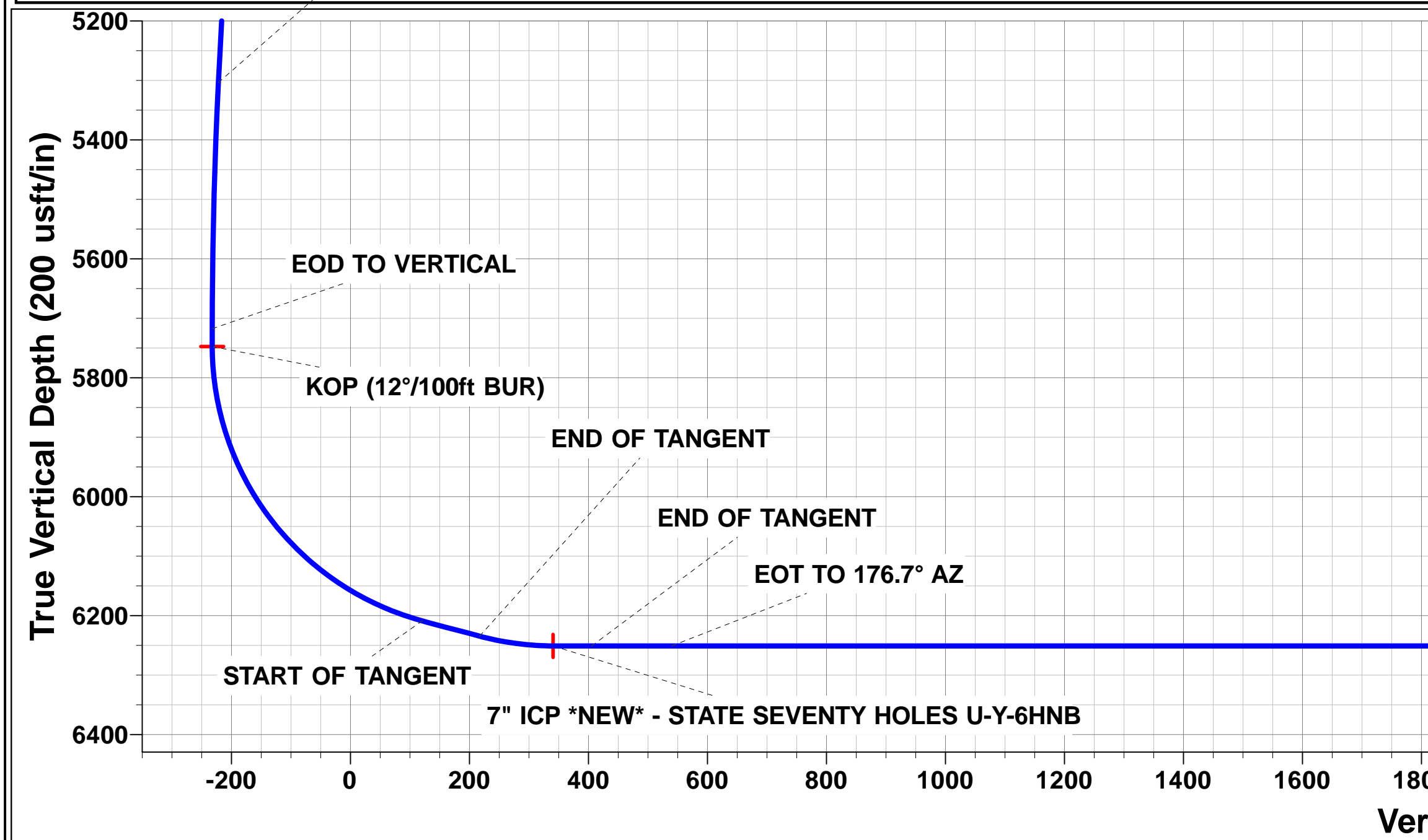
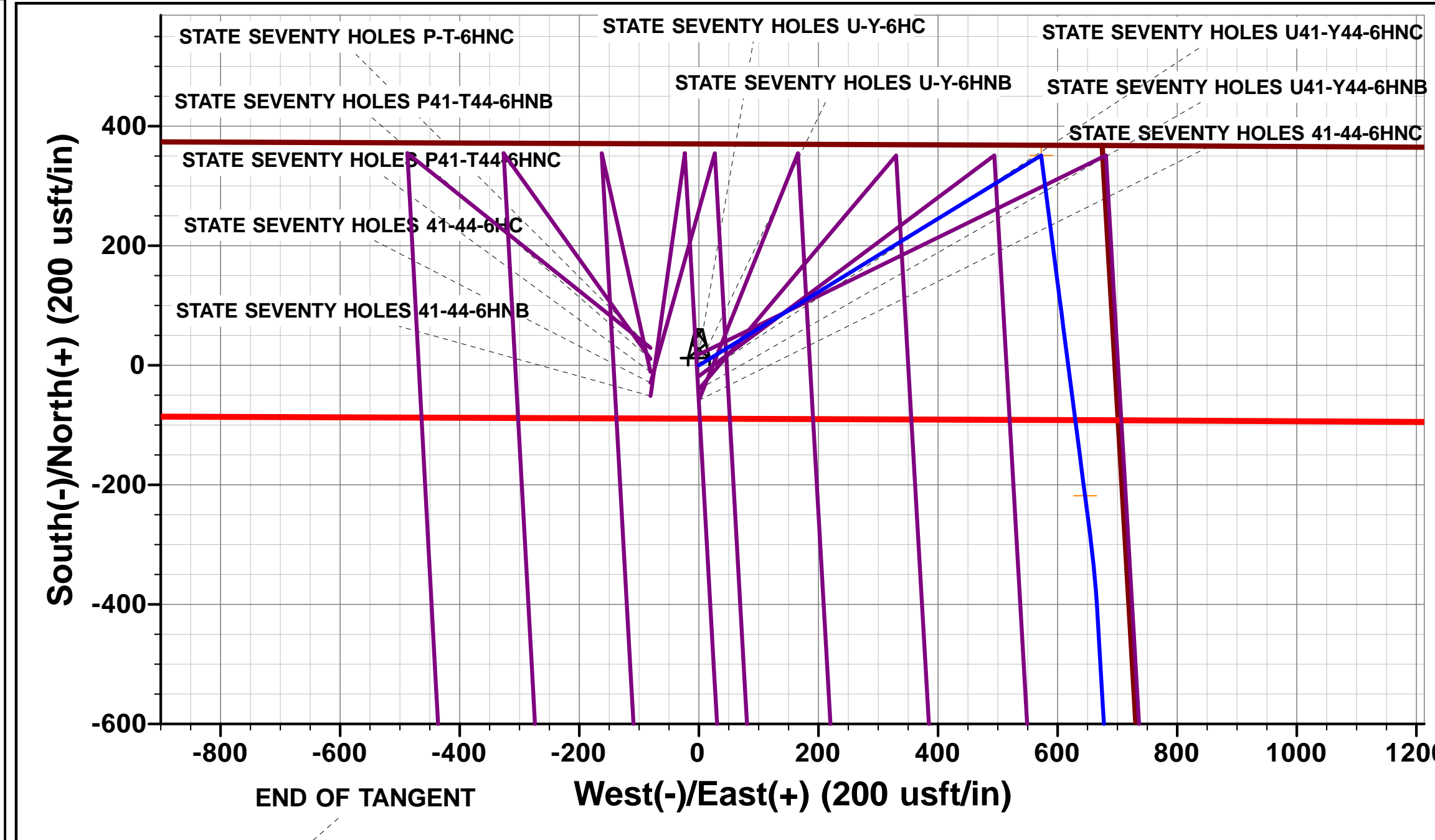
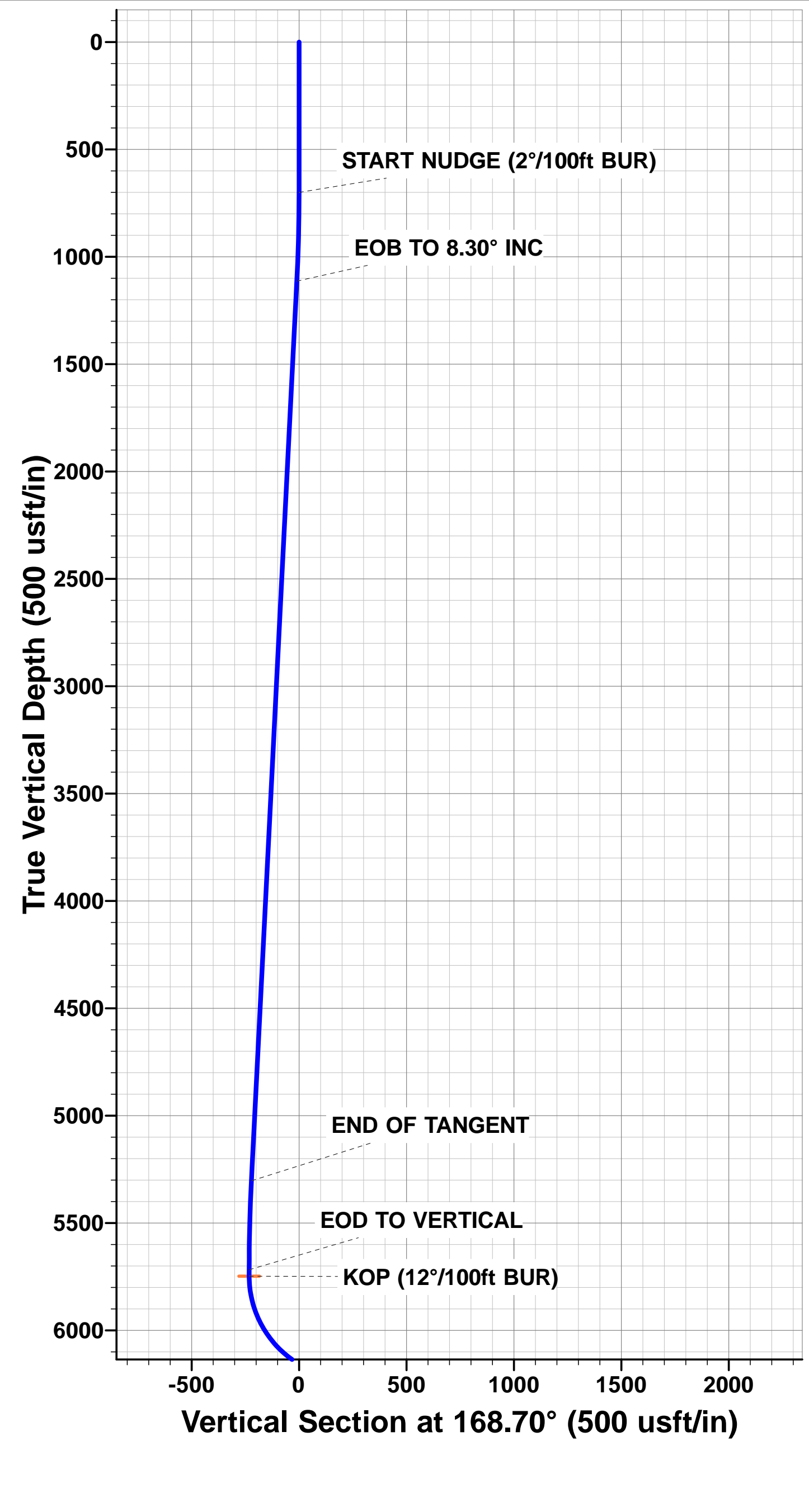


Project: WELD COUNTY, COLORADO (NAD 83)  
Site: NE NE SEC. 6 T4N R62W 6th P.M.  
Well: STATE SEVENTY HOLES U-Y-6HNB  
Wellbore: ORIGINAL WELLBORE  
Design: PROPOSAL #1

ANNOTATIONS									
TVD	MD	Inc	Azi	+N/-S	+E/-W	VSect	Dep	Annotation	
700.0	700.0	0.00	0.00	0.0	0.0	0.0	0.0	START NUDGE (2°/100ft BUR)	
1113.7	1115.2	8.30	58.47	15.7	25.6	-10.4	30.0	EOB TO 8.30° INC	
5304.0	5349.8	8.30	58.47	335.5	546.9	-221.8	641.6	END OF TANGENT	
5717.7	5765.0	0.00	0.00	351.2	572.5	-232.2	671.6	EOD TO VERTICAL	
5747.7	5795.0	0.00	0.00	351.2	572.5	-232.2	671.6	KOP (12°/100ft BUR)	
6208.9	6420.0	75.00	172.65	0.2	617.8	120.8	1025.5	START OF TANGENT	
6234.8	6520.0	75.00	172.65	-95.6	630.1	217.2	1122.1	END OF TANGENT	
6251.0	6645.0	90.00	172.65	-218.1	645.9	340.5	1245.7	7" ICP *NEW* - STATE SEVENTY HOLES U-Y-6HNB	
6251.0	6710.0	90.00	172.65	-282.6	654.3	405.3	1310.7	END OF TANGENT	
6251.0	6845.1	90.00	176.70	-417.1	666.8	539.6	1445.8	EOT TO 176.7° AZ	
6251.0	10955.8	90.00	176.70	-4521.0	903.3	4610.4	5556.5	BHL - STATE SEVENTY HOLES U-Y-6HNB	

PROPOSED LOCAL COORDINATES:  
SHL: 370ft FNL & 697ft FEL Sec 6  
7" ICP \*NEW\*: 585.2ft FNL & 59.3ft FEL Sec 6  
BHL: 470ft FSL & 56ft FEL Sec 6

WELLBORE TARGET DETAILS (LAT/LONG)					
Name	TVD	+N/-S	+E/-W	Latitude	Longitude
KOP - STATE SEVENTY HOLES U-Y-6HNB	5747.7	351.2	572.5	40.348994	-104.360326
7" ICP *NEW* - STATE SEVENTY HOLES U-Y-6HNB	6251.0	-218.1	645.9	40.347431	-104.360063
BHL - STATE SEVENTY HOLES U-Y-6HNB	6251.0	-4521.0	903.3	40.335620	-104.359140



# Planning Report



<b>Database:</b>	EDM 5000.1 Single User Db	<b>Local Co-ordinate Reference:</b>	Well STATE SEVENTY HOLES U-Y-6HNB
<b>Company:</b>	BONANZA CREEK ENERGY INC.	<b>TVD Reference:</b>	KB-EST @ 4561.0usft (Original Well Elev)
<b>Project:</b>	WELD COUNTY, COLORADO (NAD 83)	<b>MD Reference:</b>	KB-EST @ 4561.0usft (Original Well Elev)
<b>Site:</b>	NE NE SEC. 6 T4N R62W 6th P.M.	<b>North Reference:</b>	True
<b>Well:</b>	STATE SEVENTY HOLES U-Y-6HNB	<b>Survey Calculation Method:</b>	Minimum Curvature
<b>Wellbore:</b>	ORIGINAL WELLBORE		
<b>Design:</b>	PROPOSAL #1		

<b>Project</b>	WELD COUNTY, COLORADO (NAD 83)		
<b>Map System:</b>	US State Plane 1983	<b>System Datum:</b>	Mean Sea Level
<b>Geo Datum:</b>	North American Datum 1983		
<b>Map Zone:</b>	Colorado Northern Zone		Using geodetic scale factor

<b>Site</b>	NE NE SEC. 6 T4N R62W 6th P.M.		
<b>Site Position:</b>		<b>Northing:</b>	1,371,680.11 usft
<b>From:</b>	Lat/Long	<b>Easting:</b>	3,317,072.91 usft
<b>Position Uncertainty:</b>	0.0 usft	<b>Slot Radius:</b>	1.10000ft
		<b>Latitude:</b>	40.348080
		<b>Longitude:</b>	-104.362380
		<b>Grid Convergence:</b>	0.74 °

<b>Well</b>	STATE SEVENTY HOLES U-Y-6HNB		
<b>Well Position</b>	<b>+N/-S</b>	-18.2 usft	<b>Northing:</b>
	<b>+E/-W</b>	0.0 usft	<b>Easting:</b>
<b>Position Uncertainty</b>		0.0 usft	<b>Wellhead Elevation:</b>
			<b>Latitude:</b>
			<b>Longitude:</b>
			<b>Ground Level:</b>

<b>Wellbore</b>	ORIGINAL WELLBORE				
<b>Magnetics</b>	<b>Model Name</b>	<b>Sample Date</b>	<b>Declination (°)</b>	<b>Dip Angle (°)</b>	<b>Field Strength (nT)</b>
	IGRF2010	21/12/2014	8.17	66.95	52,777

<b>Design</b>	PROPOSAL #1			
<b>Audit Notes:</b>				
<b>Version:</b>	<b>Phase:</b>	PROTOTYPE	<b>Tie On Depth:</b>	0.0
<b>Vertical Section:</b>	<b>Depth From (TVD) (usft)</b>	<b>+N/-S (usft)</b>	<b>+E/-W (usft)</b>	<b>Direction (°)</b>
	6,251.0	0.0	0.0	168.70

<b>Plan Sections</b>											
MD (usft)	Inc (°)	Azi (°)	Vertical Depth	SS (usft)	+N/-S (usft)	+E/-W (usft)	Dogleg Rate (°/100usf)	Build Rate (°/100usf)	Turn Rate (°/100usf)	TFO (°)	Target
0.0	0.00	0.00	0.0	-4,561.0	0.0	0.0	0.00	0.00	0.00	0.00	
700.0	0.00	0.00	700.0	-3,861.0	0.0	0.0	0.00	0.00	0.00	0.00	
1,115.2	8.30	58.47	1,113.7	-3,447.3	15.7	25.6	2.00	2.00	0.00	58.47	
5,349.8	8.30	58.47	5,304.0	743.0	335.5	546.9	0.00	0.00	0.00	0.00	
5,765.0	0.00	0.00	5,717.7	1,156.7	351.2	572.5	2.00	-2.00	0.00	180.00	
5,795.0	0.00	0.00	5,747.7	1,186.7	351.2	572.5	0.00	0.00	0.00	0.00	KOP - STATE SEVI
6,420.0	75.00	172.65	6,208.9	1,647.9	0.2	617.8	12.00	12.00	0.00	172.65	
6,520.0	75.00	172.65	6,234.8	1,673.8	-95.6	630.1	0.00	0.00	0.00	0.00	
6,645.0	90.00	172.65	6,251.0	1,690.0	-218.1	645.9	12.00	12.00	0.00	0.00	
6,710.0	90.00	172.65	6,251.0	1,690.0	-282.6	654.3	0.00	0.00	0.00	0.00	
6,845.1	90.00	176.70	6,251.0	1,690.0	-417.1	666.8	3.00	0.00	3.00	89.99	
10,955.8	90.00	176.70	6,251.0	1,690.0	-4,521.0	903.3	0.00	0.00	0.00	0.00	BHL - STATE SEVI

# Planning Report



<b>Database:</b>	EDM 5000.1 Single User Db	<b>Local Co-ordinate Reference:</b>	Well STATE SEVENTY HOLES U-Y-6HNB
<b>Company:</b>	BONANZA CREEK ENERGY INC.	<b>TVD Reference:</b>	KB-EST @ 4561.0usft (Original Well Elev)
<b>Project:</b>	WELD COUNTY, COLORADO (NAD 83)	<b>MD Reference:</b>	KB-EST @ 4561.0usft (Original Well Elev)
<b>Site:</b>	NE NE SEC. 6 T4N R62W 6th P.M.	<b>North Reference:</b>	True
<b>Well:</b>	STATE SEVENTY HOLES U-Y-6HNB	<b>Survey Calculation Method:</b>	Minimum Curvature
<b>Wellbore:</b>	ORIGINAL WELLBORE		
<b>Design:</b>	PROPOSAL #1		

Planned Survey										
MD (usft)	Inc (°)	Azi (°)	TVD (usft)	SS (usft)	+N/-S (usft)	+E/-W (usft)	Vertical Section (usft)	Dogleg Rate (°/100usft)	Build Rate (°/100usft)	Turn Rate (°/100usft)
0.0	0.00	0.00	0.0	4,561.00	0.0	0.0	0.0	0.00	0.00	0.00
100.0	0.00	0.00	100.0	4,461.00	0.0	0.0	0.0	0.00	0.00	0.00
200.0	0.00	0.00	200.0	4,361.00	0.0	0.0	0.0	0.00	0.00	0.00
300.0	0.00	0.00	300.0	4,261.00	0.0	0.0	0.0	0.00	0.00	0.00
400.0	0.00	0.00	400.0	4,161.00	0.0	0.0	0.0	0.00	0.00	0.00
500.0	0.00	0.00	500.0	4,061.00	0.0	0.0	0.0	0.00	0.00	0.00
600.0	0.00	0.00	600.0	3,961.00	0.0	0.0	0.0	0.00	0.00	0.00
START NUDGE (2°/100ft BUR)										
700.0	0.00	0.00	700.0	3,861.00	0.0	0.0	0.0	0.00	0.00	0.00
800.0	2.00	58.47	800.0	3,761.02	0.9	1.5	-0.6	2.00	2.00	0.00
900.0	4.00	58.47	899.8	3,661.16	3.6	5.9	-2.4	2.00	2.00	0.00
1,000.0	6.00	58.47	999.5	3,561.55	8.2	13.4	-5.4	2.00	2.00	0.00
1,100.0	8.00	58.47	1,098.7	3,462.30	14.6	23.8	-9.6	2.00	2.00	0.00
EOB TO 8.30° INC										
1,115.2	8.30	58.47	1,113.7	3,447.26	15.7	25.6	-10.4	2.00	2.00	0.00
1,200.0	8.30	58.47	1,197.7	3,363.34	22.1	36.0	-14.6	0.00	0.00	0.00
1,300.0	8.30	58.47	1,296.6	3,264.39	29.7	48.4	-19.6	0.00	0.00	0.00
1,400.0	8.30	58.47	1,395.6	3,165.44	37.2	60.7	-24.6	0.00	0.00	0.00
1,500.0	8.30	58.47	1,494.5	3,066.49	44.8	73.0	-29.6	0.00	0.00	0.00
1,600.0	8.30	58.47	1,593.5	2,967.53	52.3	85.3	-34.6	0.00	0.00	0.00
1,700.0	8.30	58.47	1,692.4	2,868.58	59.9	97.6	-39.6	0.00	0.00	0.00
1,800.0	8.30	58.47	1,791.4	2,769.63	67.4	109.9	-44.6	0.00	0.00	0.00
1,900.0	8.30	58.47	1,890.3	2,670.68	75.0	122.2	-49.6	0.00	0.00	0.00
2,000.0	8.30	58.47	1,989.3	2,571.73	82.5	134.5	-54.6	0.00	0.00	0.00
2,100.0	8.30	58.47	2,088.2	2,472.78	90.1	146.8	-59.6	0.00	0.00	0.00
2,200.0	8.30	58.47	2,187.2	2,373.82	97.6	159.1	-64.6	0.00	0.00	0.00
2,300.0	8.30	58.47	2,286.1	2,274.87	105.2	171.5	-69.5	0.00	0.00	0.00
2,400.0	8.30	58.47	2,385.1	2,175.92	112.7	183.8	-74.5	0.00	0.00	0.00
2,500.0	8.30	58.47	2,484.0	2,076.97	120.3	196.1	-79.5	0.00	0.00	0.00
2,600.0	8.30	58.47	2,583.0	1,978.02	127.8	208.4	-84.5	0.00	0.00	0.00
2,700.0	8.30	58.47	2,681.9	1,879.07	135.4	220.7	-89.5	0.00	0.00	0.00
2,800.0	8.30	58.47	2,780.9	1,780.12	142.9	233.0	-94.5	0.00	0.00	0.00
2,900.0	8.30	58.47	2,879.8	1,681.16	150.5	245.3	-99.5	0.00	0.00	0.00
3,000.0	8.30	58.47	2,978.8	1,582.21	158.0	257.6	-104.5	0.00	0.00	0.00
3,100.0	8.30	58.47	3,077.7	1,483.26	165.6	269.9	-109.5	0.00	0.00	0.00
3,200.0	8.30	58.47	3,176.7	1,384.31	173.1	282.2	-114.5	0.00	0.00	0.00
3,300.0	8.30	58.47	3,275.6	1,285.36	180.7	294.6	-119.5	0.00	0.00	0.00
3,400.0	8.30	58.47	3,374.6	1,186.41	188.2	306.9	-124.5	0.00	0.00	0.00
3,500.0	8.30	58.47	3,473.5	1,087.45	195.8	319.2	-129.5	0.00	0.00	0.00
3,600.0	8.30	58.47	3,572.5	988.50	203.4	331.5	-134.5	0.00	0.00	0.00
3,700.0	8.30	58.47	3,671.4	889.55	210.9	343.8	-139.5	0.00	0.00	0.00
3,800.0	8.30	58.47	3,770.4	790.60	218.5	356.1	-144.5	0.00	0.00	0.00
3,900.0	8.30	58.47	3,869.4	691.65	226.0	368.4	-149.4	0.00	0.00	0.00
4,000.0	8.30	58.47	3,968.3	592.70	233.6	380.7	-154.4	0.00	0.00	0.00
4,100.0	8.30	58.47	4,067.3	493.74	241.1	393.0	-159.4	0.00	0.00	0.00
4,200.0	8.30	58.47	4,166.2	394.79	248.7	405.4	-164.4	0.00	0.00	0.00
4,300.0	8.30	58.47	4,265.2	295.84	256.2	417.7	-169.4	0.00	0.00	0.00
4,400.0	8.30	58.47	4,364.1	196.89	263.8	430.0	-174.4	0.00	0.00	0.00
4,500.0	8.30	58.47	4,463.1	97.94	271.3	442.3	-179.4	0.00	0.00	0.00
4,600.0	8.30	58.47	4,562.0	-1.01	278.9	454.6	-184.4	0.00	0.00	0.00
4,700.0	8.30	58.47	4,661.0	-99.97	286.4	466.9	-189.4	0.00	0.00	0.00
4,800.0	8.30	58.47	4,759.9	-198.92	294.0	479.2	-194.4	0.00	0.00	0.00
4,900.0	8.30	58.47	4,858.9	-297.87	301.5	491.5	-199.4	0.00	0.00	0.00
5,000.0	8.30	58.47	4,957.8	-396.82	309.1	503.8	-204.4	0.00	0.00	0.00



# Planning Report



<b>Database:</b>	EDM 5000.1 Single User Db	<b>Local Co-ordinate Reference:</b>	Well STATE SEVENTY HOLES U-Y-6HNB
<b>Company:</b>	BONANZA CREEK ENERGY INC.	<b>TVD Reference:</b>	KB-EST @ 4561.0usft (Original Well Elev)
<b>Project:</b>	WELD COUNTY, COLORADO (NAD 83)	<b>MD Reference:</b>	KB-EST @ 4561.0usft (Original Well Elev)
<b>Site:</b>	NE NE SEC. 6 T4N R62W 6th P.M.	<b>North Reference:</b>	True
<b>Well:</b>	STATE SEVENTY HOLES U-Y-6HNB	<b>Survey Calculation Method:</b>	Minimum Curvature
<b>Wellbore:</b>	ORIGINAL WELLBORE		
<b>Design:</b>	PROPOSAL #1		

## Planned Survey

MD (usft)	Inc (°)	Azi (°)	TVD (usft)	SS (usft)	+N/-S (usft)	+E/-W (usft)	Vertical Section (usft)	Dogleg Rate (°/100usft)	Build Rate (°/100usft)	Turn Rate (°/100usft)
5,100.0	8.30	58.47	5,056.8	-495.77	316.6	516.1	-209.4	0.00	0.00	0.00
5,200.0	8.30	58.47	5,155.7	-594.72	324.2	528.5	-214.4	0.00	0.00	0.00
5,300.0	8.30	58.47	5,254.7	-693.68	331.7	540.8	-219.4	0.00	0.00	0.00
<b>END OF TANGENT</b>										
<b>5,349.8</b>	<b>8.30</b>	<b>58.47</b>	<b>5,304.0</b>	<b>-742.96</b>	<b>335.5</b>	<b>546.9</b>	<b>-221.8</b>	<b>0.00</b>	<b>0.00</b>	<b>0.00</b>
5,400.0	7.30	58.47	5,353.7	-792.69	339.1	552.7	-224.2	2.00	-2.00	0.00
5,500.0	5.30	58.47	5,453.1	-892.08	344.8	562.1	-228.0	2.00	-2.00	0.00
5,600.0	3.30	58.47	5,552.8	-991.79	348.7	568.5	-230.6	2.00	-2.00	0.00
5,700.0	1.30	58.47	5,652.7	-1,091.71	350.8	571.9	-232.0	2.00	-2.00	0.00
<b>EOD TO VERTICAL</b>										
<b>5,765.0</b>	<b>0.00</b>	<b>0.00</b>	<b>5,717.7</b>	<b>-1,156.70</b>	<b>351.2</b>	<b>572.5</b>	<b>-232.2</b>	<b>2.00</b>	<b>-2.00</b>	<b>0.00</b>
<b>KOP (12°/100ft BUR)</b>										
<b>5,795.0</b>	<b>0.00</b>	<b>0.00</b>	<b>5,747.7</b>	<b>-1,186.70</b>	<b>351.2</b>	<b>572.5</b>	<b>-232.2</b>	<b>0.00</b>	<b>0.00</b>	<b>0.00</b>
5,800.0	0.60	172.65	5,752.7	-1,191.70	351.2	572.5	-232.2	12.00	12.00	0.00
5,900.0	12.60	172.65	5,851.9	-1,290.86	339.8	574.0	-220.8	12.00	12.00	0.00
6,000.0	24.60	172.65	5,946.5	-1,385.46	308.2	578.0	-189.0	12.00	12.00	0.00
6,100.0	36.60	172.65	6,032.4	-1,471.38	257.8	584.5	-138.3	12.00	12.00	0.00
6,200.0	48.60	172.65	6,105.9	-1,544.85	190.8	593.2	-70.9	12.00	12.00	0.00
6,300.0	60.60	172.65	6,163.7	-1,602.67	110.1	603.6	10.3	12.00	12.00	0.00
6,400.0	72.60	172.65	6,203.3	-1,642.32	19.3	615.3	101.7	12.00	12.00	0.00
<b>START OF TANGENT</b>										
<b>6,420.0</b>	<b>75.00</b>	<b>172.65</b>	<b>6,208.9</b>	<b>-1,647.90</b>	<b>0.2</b>	<b>617.8</b>	<b>120.8</b>	<b>12.00</b>	<b>12.00</b>	<b>0.00</b>
6,500.0	75.00	172.65	6,229.6	-1,668.60	-76.4	627.7	197.9	0.00	0.00	0.00
<b>END OF TANGENT</b>										
<b>6,520.0</b>	<b>75.00</b>	<b>172.65</b>	<b>6,234.8</b>	<b>-1,673.78</b>	<b>-95.6</b>	<b>630.1</b>	<b>217.2</b>	<b>0.00</b>	<b>0.00</b>	<b>0.00</b>
6,600.0	84.60	172.65	6,248.9	-1,687.93	-173.6	640.2	295.6	12.00	12.00	0.00
<b>7" ICP *NEW* - STATE SEVENTY HOLES U-Y-6HNB</b>										
<b>6,645.0</b>	<b>90.00</b>	<b>172.65</b>	<b>6,251.0</b>	<b>-1,690.05</b>	<b>-218.1</b>	<b>645.9</b>	<b>340.5</b>	<b>12.00</b>	<b>12.00</b>	<b>0.00</b>
6,700.0	90.00	172.65	6,251.0	-1,690.05	-272.7	653.0	395.3	0.00	0.00	0.00
<b>END OF TANGENT</b>										
<b>6,710.0</b>	<b>90.00</b>	<b>172.65</b>	<b>6,251.0</b>	<b>-1,690.05</b>	<b>-282.6</b>	<b>654.3</b>	<b>405.3</b>	<b>0.00</b>	<b>0.00</b>	<b>0.00</b>
6,800.0	90.00	175.35	6,251.0	-1,690.05	-372.1	663.7	494.9	3.00	0.00	3.00
<b>EOT TO 176.7° AZ</b>										
<b>6,845.1</b>	<b>90.00</b>	<b>176.70</b>	<b>6,251.0</b>	<b>-1,690.05</b>	<b>-417.1</b>	<b>666.8</b>	<b>539.6</b>	<b>3.00</b>	<b>0.00</b>	<b>3.00</b>
6,900.0	90.00	176.70	6,251.0	-1,690.05	-471.9	669.9	594.0	0.00	0.00	0.00
7,000.0	90.00	176.70	6,251.0	-1,690.04	-571.7	675.7	693.0	0.00	0.00	0.00
7,100.0	90.00	176.70	6,251.0	-1,690.04	-671.6	681.5	792.1	0.00	0.00	0.00
7,200.0	90.00	176.70	6,251.0	-1,690.04	-771.4	687.2	891.1	0.00	0.00	0.00
7,300.0	90.00	176.70	6,251.0	-1,690.04	-871.2	693.0	990.1	0.00	0.00	0.00
7,400.0	90.00	176.70	6,251.0	-1,690.04	-971.1	698.7	1,089.1	0.00	0.00	0.00
7,500.0	90.00	176.70	6,251.0	-1,690.04	-1,070.9	704.5	1,188.2	0.00	0.00	0.00
7,600.0	90.00	176.70	6,251.0	-1,690.04	-1,170.7	710.2	1,287.2	0.00	0.00	0.00
7,700.0	90.00	176.70	6,251.0	-1,690.04	-1,270.6	716.0	1,386.2	0.00	0.00	0.00
7,800.0	90.00	176.70	6,251.0	-1,690.04	-1,370.4	721.7	1,485.3	0.00	0.00	0.00
7,900.0	90.00	176.70	6,251.0	-1,690.03	-1,470.3	727.5	1,584.3	0.00	0.00	0.00
8,000.0	90.00	176.70	6,251.0	-1,690.03	-1,570.1	733.2	1,683.3	0.00	0.00	0.00
8,100.0	90.00	176.70	6,251.0	-1,690.03	-1,669.9	739.0	1,782.3	0.00	0.00	0.00
8,200.0	90.00	176.70	6,251.0	-1,690.03	-1,769.8	744.7	1,881.4	0.00	0.00	0.00
8,300.0	90.00	176.70	6,251.0	-1,690.03	-1,869.6	750.5	1,980.4	0.00	0.00	0.00
8,400.0	90.00	176.70	6,251.0	-1,690.03	-1,969.4	756.2	2,079.4	0.00	0.00	0.00
8,500.0	90.00	176.70	6,251.0	-1,690.03	-2,069.3	762.0	2,178.4	0.00	0.00	0.00
8,600.0	90.00	176.70	6,251.0	-1,690.03	-2,169.1	767.7	2,277.5	0.00	0.00	0.00
8,700.0	90.00	176.70	6,251.0	-1,690.03	-2,268.9	773.5	2,376.5	0.00	0.00	0.00

# Planning Report



<b>Database:</b>	EDM 5000.1 Single User Db	<b>Local Co-ordinate Reference:</b>	Well STATE SEVENTY HOLES U-Y-6HNB
<b>Company:</b>	BONANZA CREEK ENERGY INC.	<b>TVD Reference:</b>	KB-EST @ 4561.0usft (Original Well Elev)
<b>Project:</b>	WELD COUNTY, COLORADO (NAD 83)	<b>MD Reference:</b>	KB-EST @ 4561.0usft (Original Well Elev)
<b>Site:</b>	NE NE SEC. 6 T4N R62W 6th P.M.	<b>North Reference:</b>	True
<b>Well:</b>	STATE SEVENTY HOLES U-Y-6HNB	<b>Survey Calculation Method:</b>	Minimum Curvature
<b>Wellbore:</b>	ORIGINAL WELLBORE		
<b>Design:</b>	PROPOSAL #1		

## Planned Survey

MD (usft)	Inc (°)	Azi (°)	TVD (usft)	SS (usft)	+N/-S (usft)	+E/-W (usft)	Vertical Section (usft)	Dogleg Rate (°/100usft)	Build Rate (°/100usft)	Turn Rate (°/100usft)
8,800.0	90.00	176.70	6,251.0	-1,690.02	-2,368.8	779.2	2,475.5	0.00	0.00	0.00
8,900.0	90.00	176.70	6,251.0	-1,690.02	-2,468.6	785.0	2,574.5	0.00	0.00	0.00
9,000.0	90.00	176.70	6,251.0	-1,690.02	-2,568.4	790.8	2,673.6	0.00	0.00	0.00
9,100.0	90.00	176.70	6,251.0	-1,690.02	-2,668.3	796.5	2,772.6	0.00	0.00	0.00
9,200.0	90.00	176.70	6,251.0	-1,690.02	-2,768.1	802.3	2,871.6	0.00	0.00	0.00
9,300.0	90.00	176.70	6,251.0	-1,690.02	-2,867.9	808.0	2,970.7	0.00	0.00	0.00
9,400.0	90.00	176.70	6,251.0	-1,690.02	-2,967.8	813.8	3,069.7	0.00	0.00	0.00
9,500.0	90.00	176.70	6,251.0	-1,690.02	-3,067.6	819.5	3,168.7	0.00	0.00	0.00
9,600.0	90.00	176.70	6,251.0	-1,690.02	-3,167.4	825.3	3,267.7	0.00	0.00	0.00
9,700.0	90.00	176.70	6,251.0	-1,690.01	-3,267.3	831.0	3,366.8	0.00	0.00	0.00
9,800.0	90.00	176.70	6,251.0	-1,690.01	-3,367.1	836.8	3,465.8	0.00	0.00	0.00
9,900.0	90.00	176.70	6,251.0	-1,690.01	-3,466.9	842.5	3,564.8	0.00	0.00	0.00
10,000.0	90.00	176.70	6,251.0	-1,690.01	-3,566.8	848.3	3,663.8	0.00	0.00	0.00
10,100.0	90.00	176.70	6,251.0	-1,690.01	-3,666.6	854.0	3,762.9	0.00	0.00	0.00
10,200.0	90.00	176.70	6,251.0	-1,690.01	-3,766.4	859.8	3,861.9	0.00	0.00	0.00
10,300.0	90.00	176.70	6,251.0	-1,690.01	-3,866.3	865.5	3,960.9	0.00	0.00	0.00
10,400.0	90.00	176.70	6,251.0	-1,690.01	-3,966.1	871.3	4,059.9	0.00	0.00	0.00
10,500.0	90.00	176.70	6,251.0	-1,690.01	-4,065.9	877.0	4,159.0	0.00	0.00	0.00
10,600.0	90.00	176.70	6,251.0	-1,690.00	-4,165.8	882.8	4,258.0	0.00	0.00	0.00
10,700.0	90.00	176.70	6,251.0	-1,690.00	-4,265.6	888.6	4,357.0	0.00	0.00	0.00
10,800.0	90.00	176.70	6,251.0	-1,690.00	-4,365.4	894.3	4,456.1	0.00	0.00	0.00
10,900.0	90.00	176.70	6,251.0	-1,690.00	-4,465.3	900.1	4,555.1	0.00	0.00	0.00
<b>BHL - STATE SEVENTY HOLES U-Y-6HNB</b>										
<b>10,955.8</b>	<b>90.00</b>	<b>176.70</b>	<b>6,251.0</b>	<b>-1,690.00</b>	<b>-4,521.0</b>	<b>903.3</b>	<b>4,610.4</b>	<b>0.00</b>	<b>0.00</b>	<b>0.00</b>

## Plan Annotations

MD (usft)	TVD (usft)	Local Coordinates		Comment
		+N/-S (usft)	+E/-W (usft)	
700.0	700.0	0.0	0.0	START NUDGE (2°/100ft BUR)
1,115.2	1,113.7	15.7	25.6	EOB TO 8.30° INC
5,349.8	5,304.0	335.5	546.9	END OF TANGENT
5,765.0	5,717.7	351.2	572.5	EOD TO VERTICAL
5,795.0	5,747.7	351.2	572.5	KOP (12°/100ft BUR)
6,420.0	6,208.9	0.2	617.8	START OF TANGENT
6,520.0	6,234.8	-95.6	630.1	END OF TANGENT
6,645.0	6,251.0	-218.1	645.9	7" ICP *NEW* - STATE SEVENTY HOLES U-Y-6HNB
6,710.0	6,251.0	-282.6	654.3	END OF TANGENT
6,845.1	6,251.0	-417.1	666.8	EOT TO 176.7° AZ
10,955.8	6,251.0	-4,521.0	903.3	BHL - STATE SEVENTY HOLES U-Y-6HNB